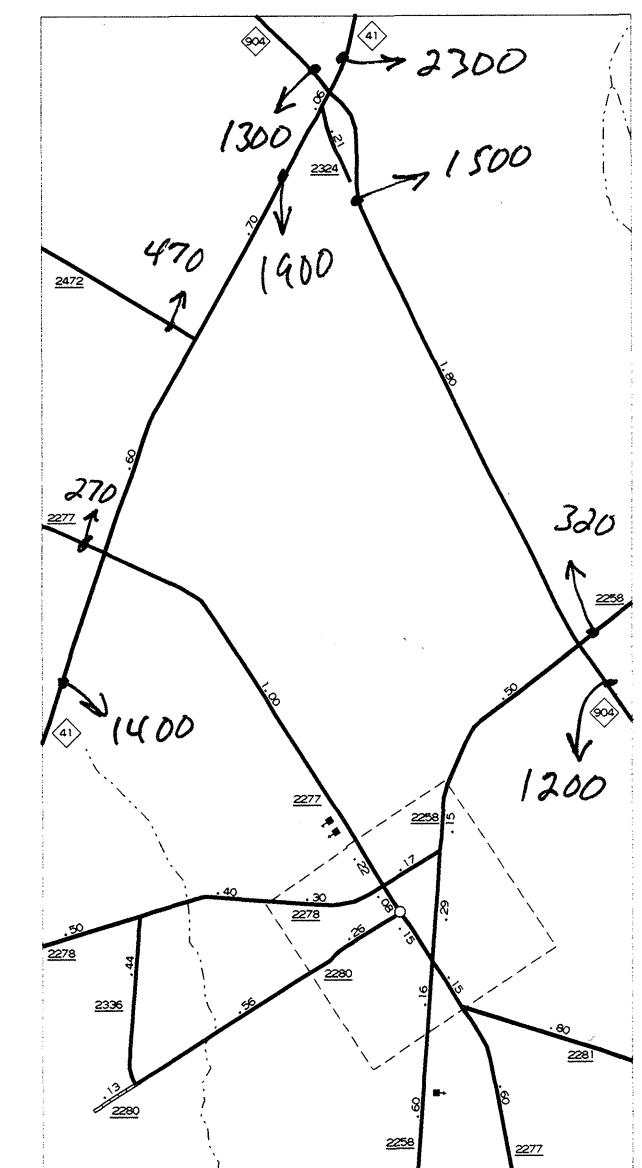
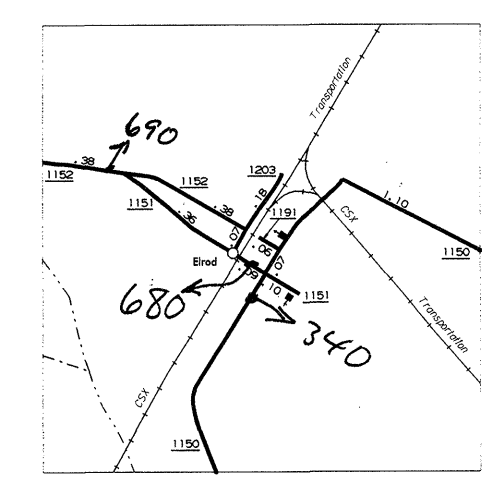


**1999
ANNUAL AVERAGE
DAILY TRAFFIC**

Some of the traffic estimates in this county were based on data collected after hurricane events in 1999. Contact the Traffic Survey Unit at (919) 733-9770 for information about a particular location or area.

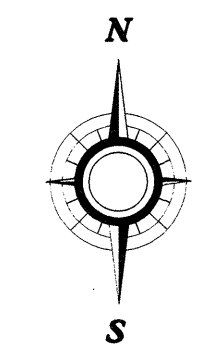


MARIETTA
POP. 70



ELROD

N.C. Department of Transportation
Statewide Planning Branch
Traffic Survey Unit
1554 Mail Service Center
Raleigh, NC 27699-1554



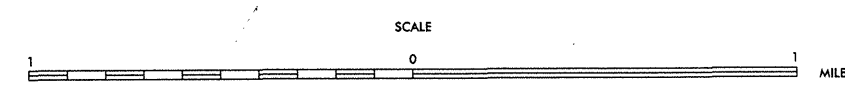
ENLARGED MUNICIPAL AND SUBURBAN AREAS

ROBESON COUNTY

NORTH CAROLINA

PREPARED BY THE
NORTH CAROLINA DEPARTMENT OF TRANSPORTATION
DIVISION OF HIGHWAYS - GIS UNIT

IN COOPERATION WITH THE
U.S. DEPARTMENT OF TRANSPORTATION
FEDERAL HIGHWAY ADMINISTRATION



10,000 FOOT GRID BASED ON NORTH CAROLINA PLANE COORDINATE SYSTEM
POLYLINE PROJECTION

REVISIONS
7-1-97 RLN
2-2-99 RLN
9-3-99 RLN

COPY OF THE MAP MAY BE MADE
TO THE PUBLIC AT A NOMINAL COST.
ADDRESS: MAPS, N.C. DEPARTMENT OF TRANSPORTATION
DIVISION OF HIGHWAYS
RALEIGH, NORTH CAROLINA 27611

ROBESON - SHEET 3