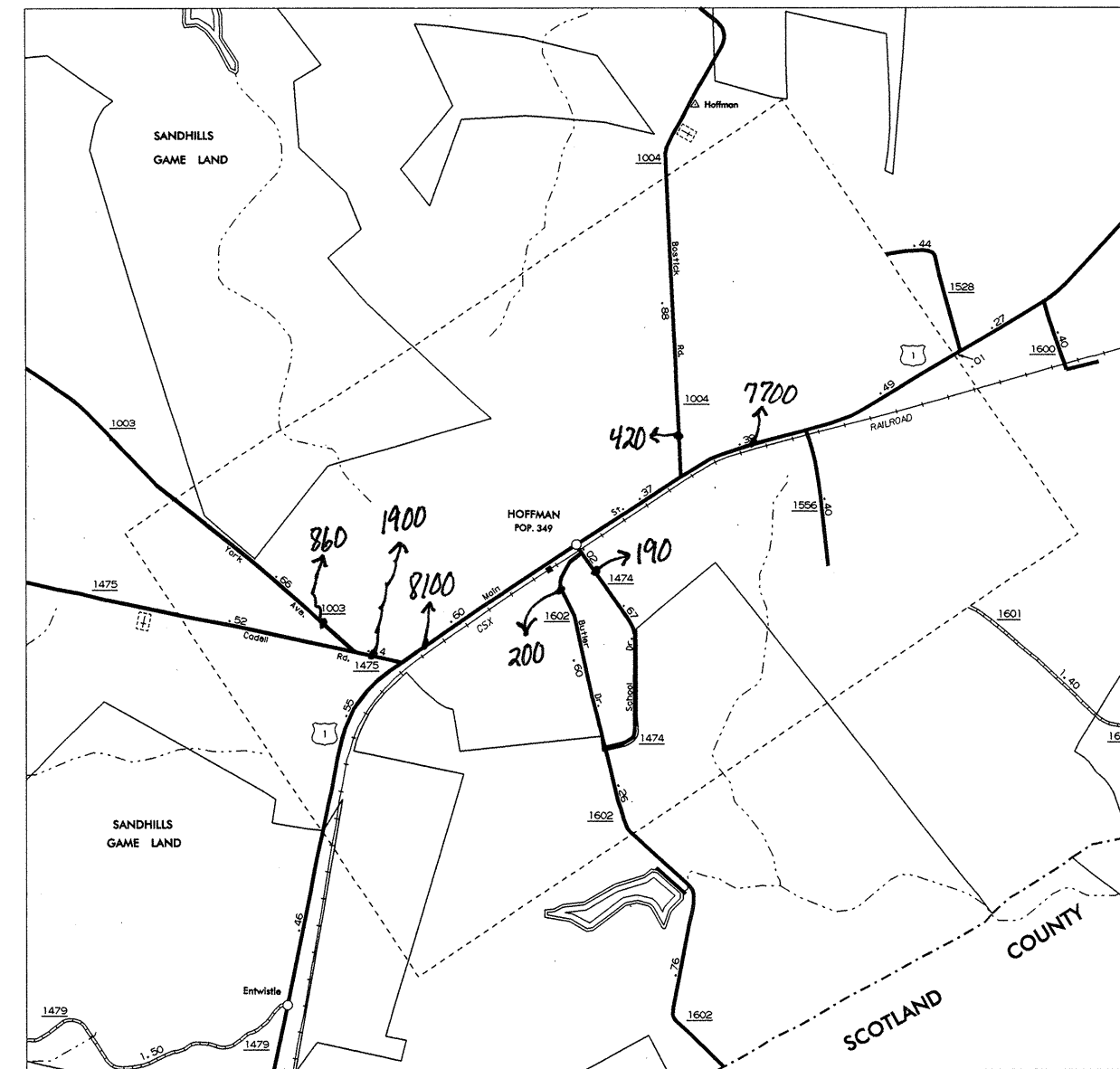
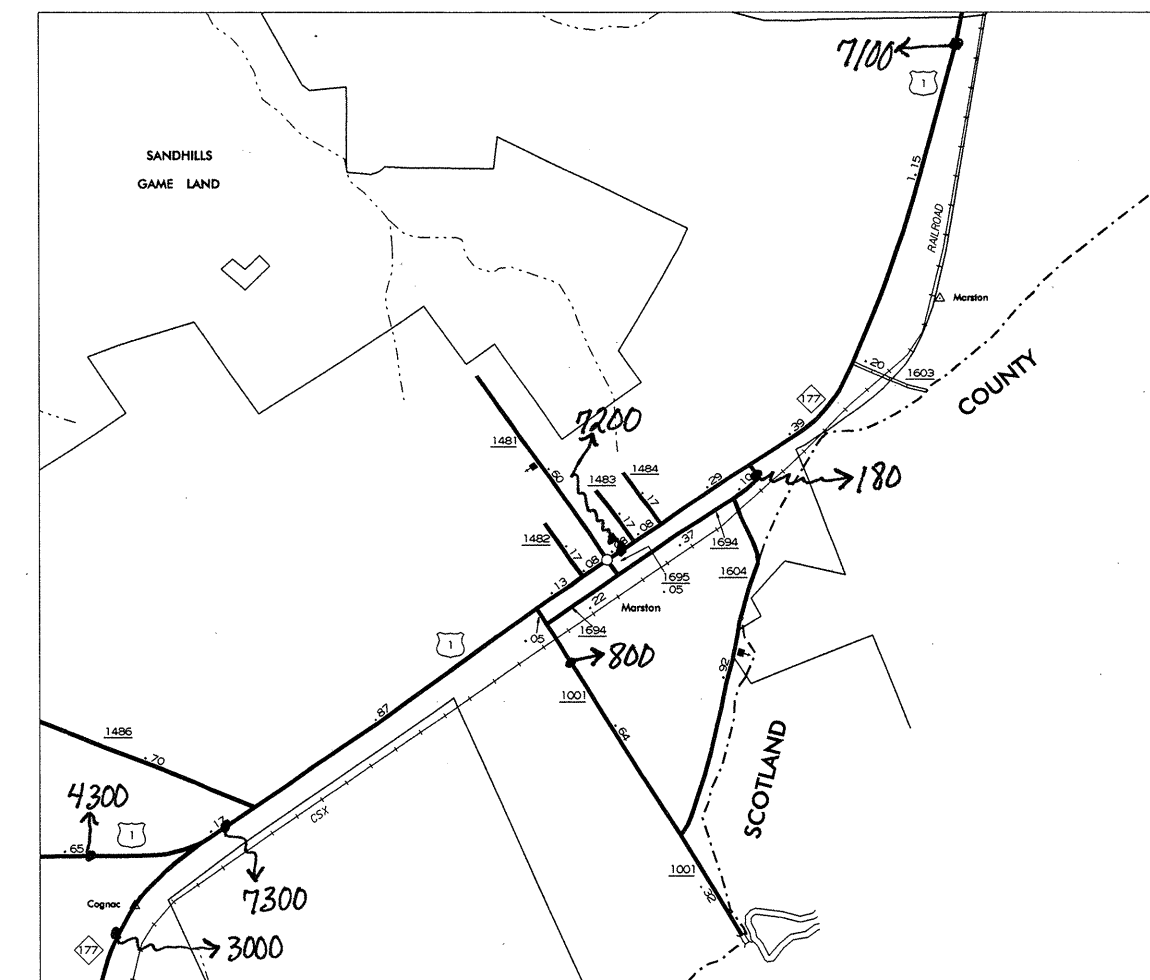


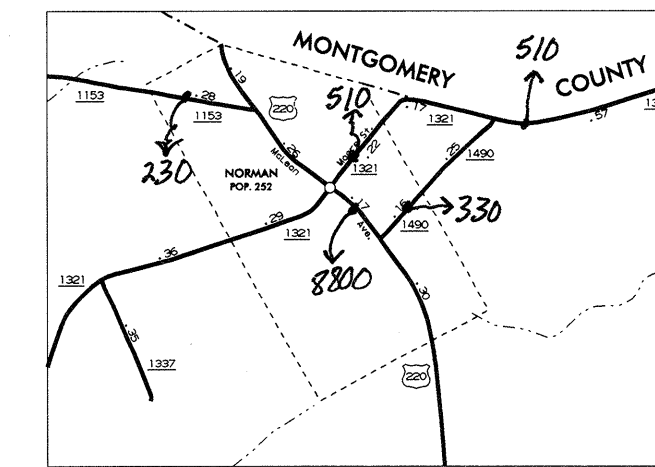
ELLERBE
POP. 1,175



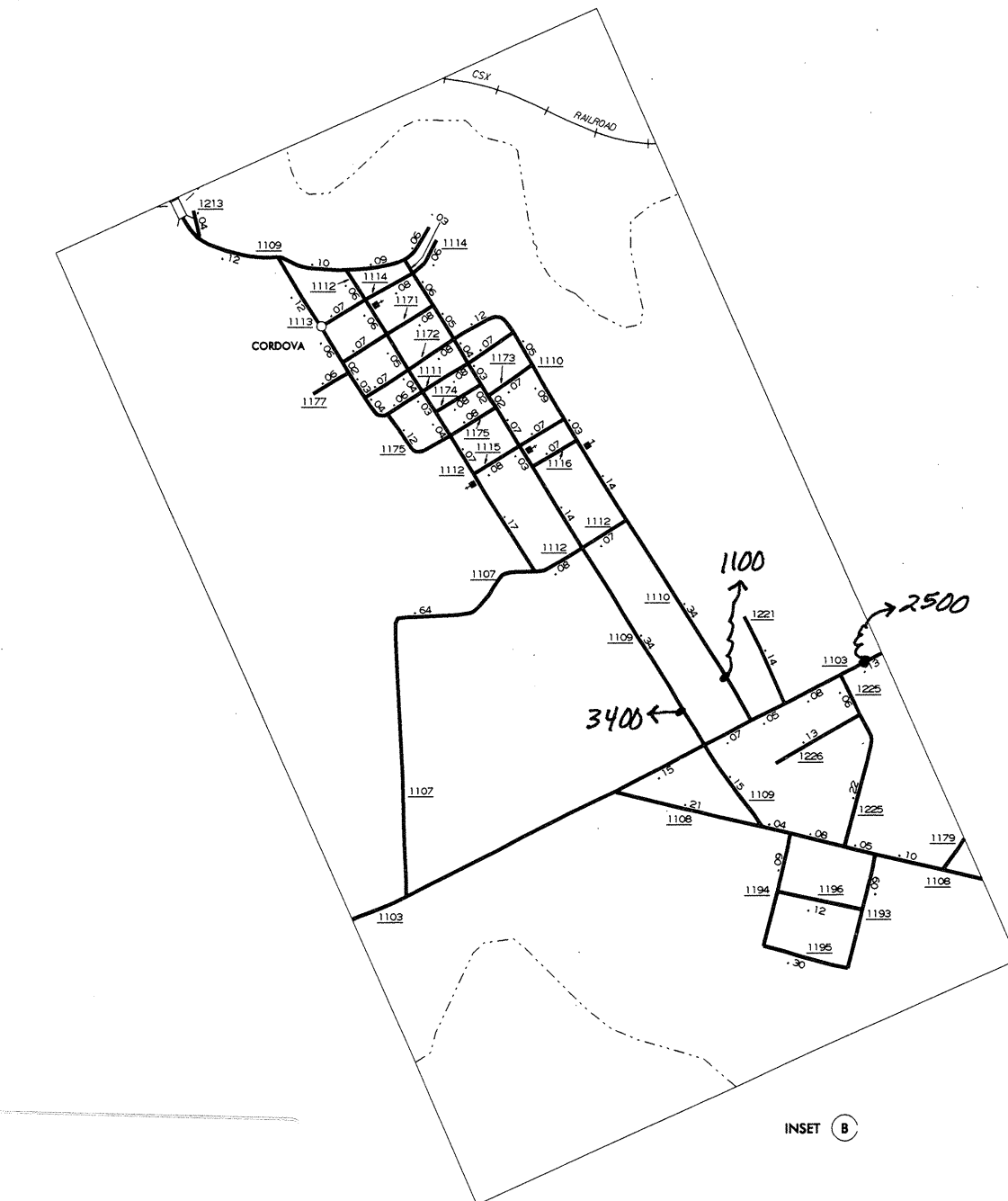
HOFFMAN
POP. 349



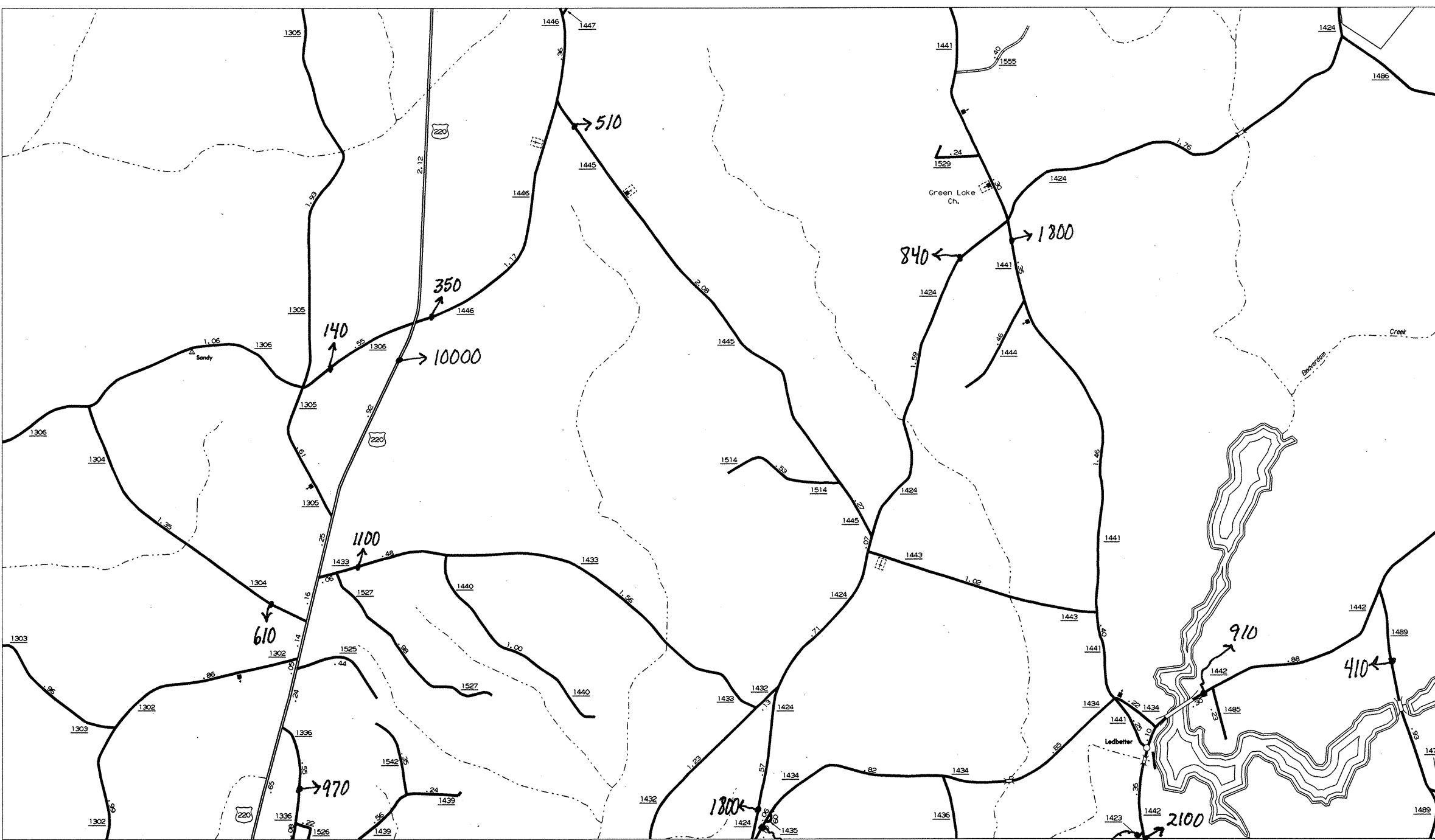
MARSTON



NORMAN
POP. 252



INSET B



LEDBETTER AND VICINITY

**1999
ANNUAL AVERAGE
DAILY TRAFFIC**

N.C. Department of Transportation
Statewide Planning Branch
Traffic Survey Unit
1554 Mail Service Center
Raleigh, NC 27699-1554

SCALE
1 8
0 0.5 MILE

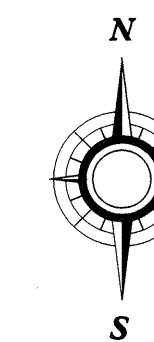
ENLARGED MUNICIPAL AND SUBURBAN AREAS

RICHMOND COUNTY

NORTH CAROLINA

PREPARED BY THE
NORTH CAROLINA DEPARTMENT OF TRANSPORTATION
DIVISION OF HIGHWAYS - GIS UNIT

IN COOPERATION WITH THE
U.S. DEPARTMENT OF TRANSPORTATION
FEDERAL HIGHWAY ADMINISTRATION



SCALE
0 1 2 MILES

REVISED
 12/14/94
 RICHMOND