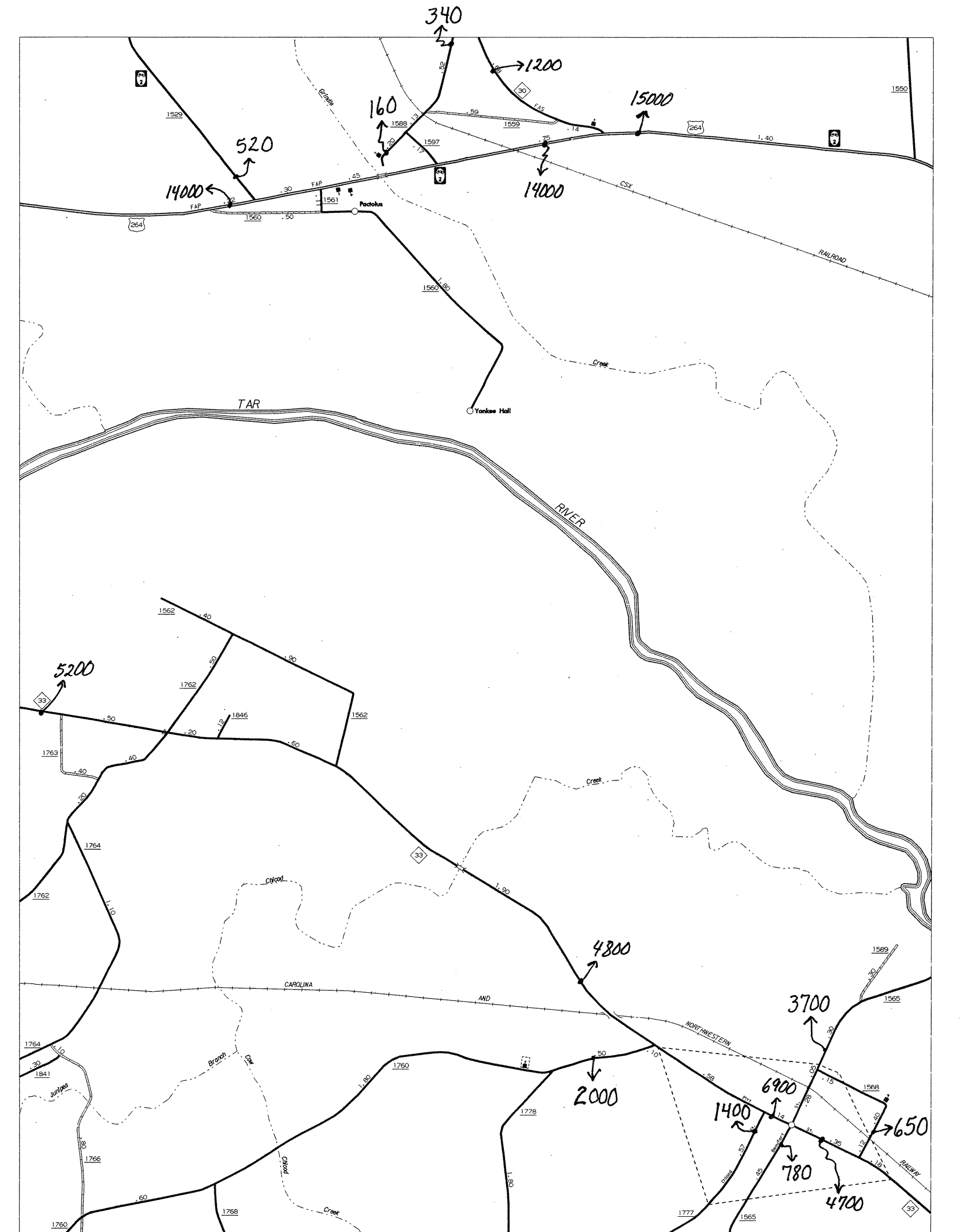
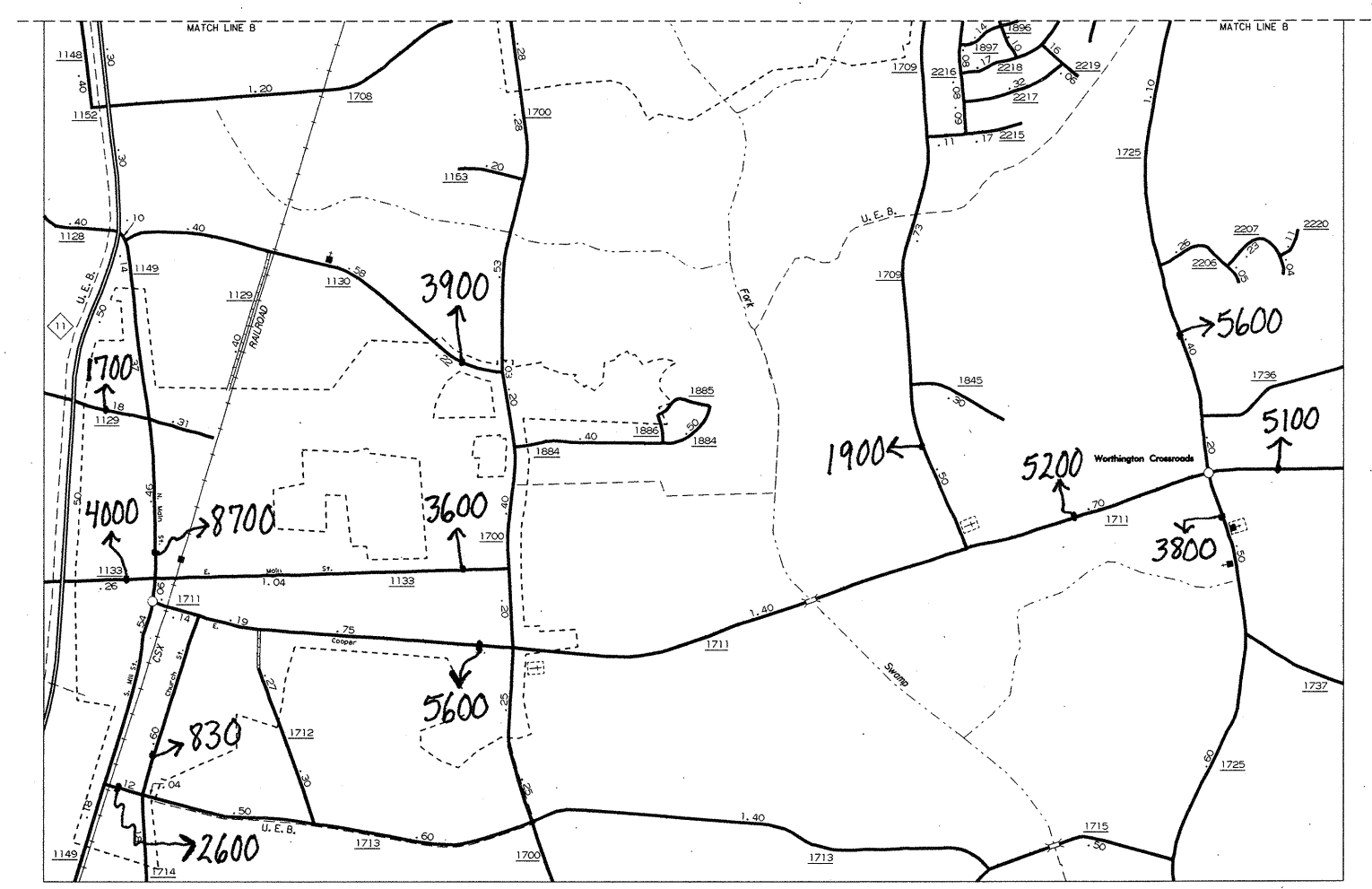


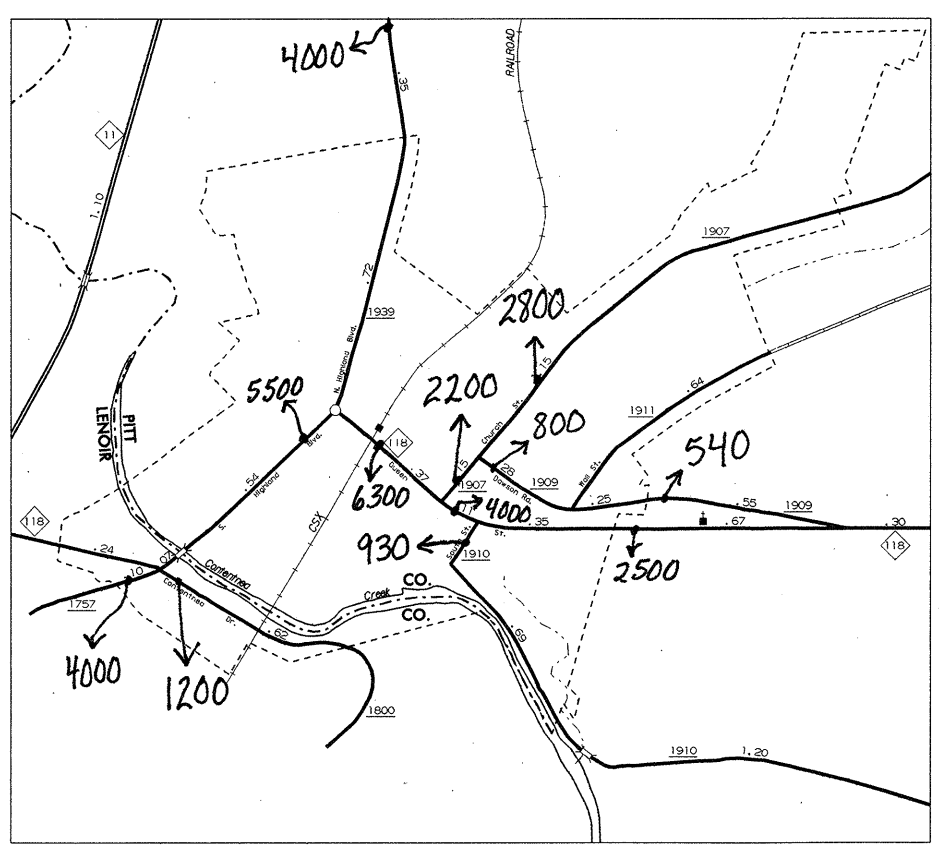
FARMVILLE
POP. 4,535



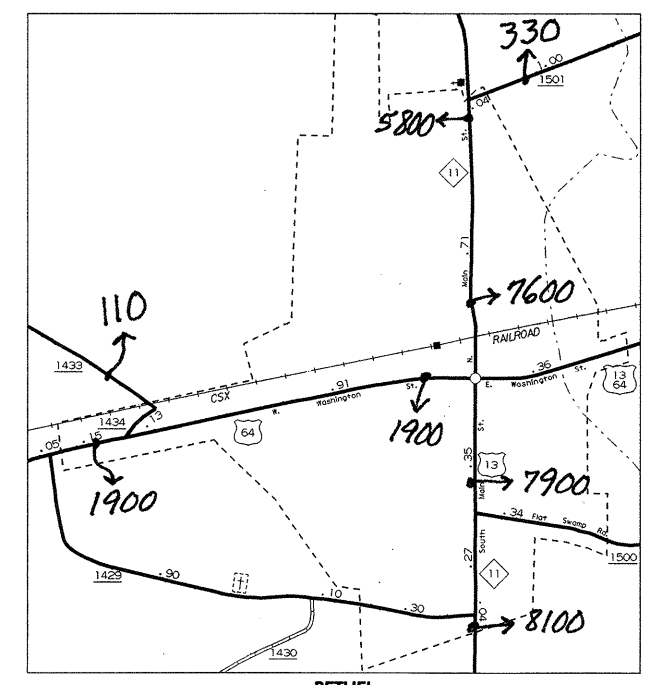
GRIMESLAND
POP. 473



WINTERVILLE
POP. 3,129



GRIFTON
POP. 2,140



BETHEL
POP. 1,854

**1999
ANNUAL AVERAGE
DAILY TRAFFIC**

N.C. Department of Transportation
Statewide Planning Branch
Traffic Survey Unit
1554 Mail Service Center
Raleigh, NC 27699-1554

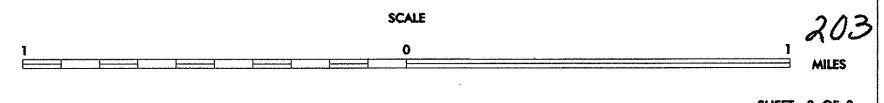
ENLARGED MUNICIPAL AND SUBURBAN AREAS

**PITT COUNTY
NORTH CAROLINA**

PREPARED BY THE
NORTH CAROLINA DEPARTMENT OF TRANSPORTATION
DIVISION OF HIGHWAYS - GIS UNIT

IN COOPERATION WITH THE
U.S. DEPARTMENT OF TRANSPORTATION
FEDERAL HIGHWAY ADMINISTRATION

Some of the traffic estimates in this county were based on data collected after hurricane events in 1999. Contact the Traffic Survey Unit at (919) 733-8770 for information about a particular location or area.



2.03
MILES

COPIES OF THIS MAP ARE AVAILABLE AT A FAVORABLE COST FROM THE NORTH CAROLINA DEPARTMENT OF TRANSPORTATION, DIVISION OF HIGHWAYS, ADDRESS: RALEIGH, NORTH CAROLINA 27611
 REVISED 01-94 008