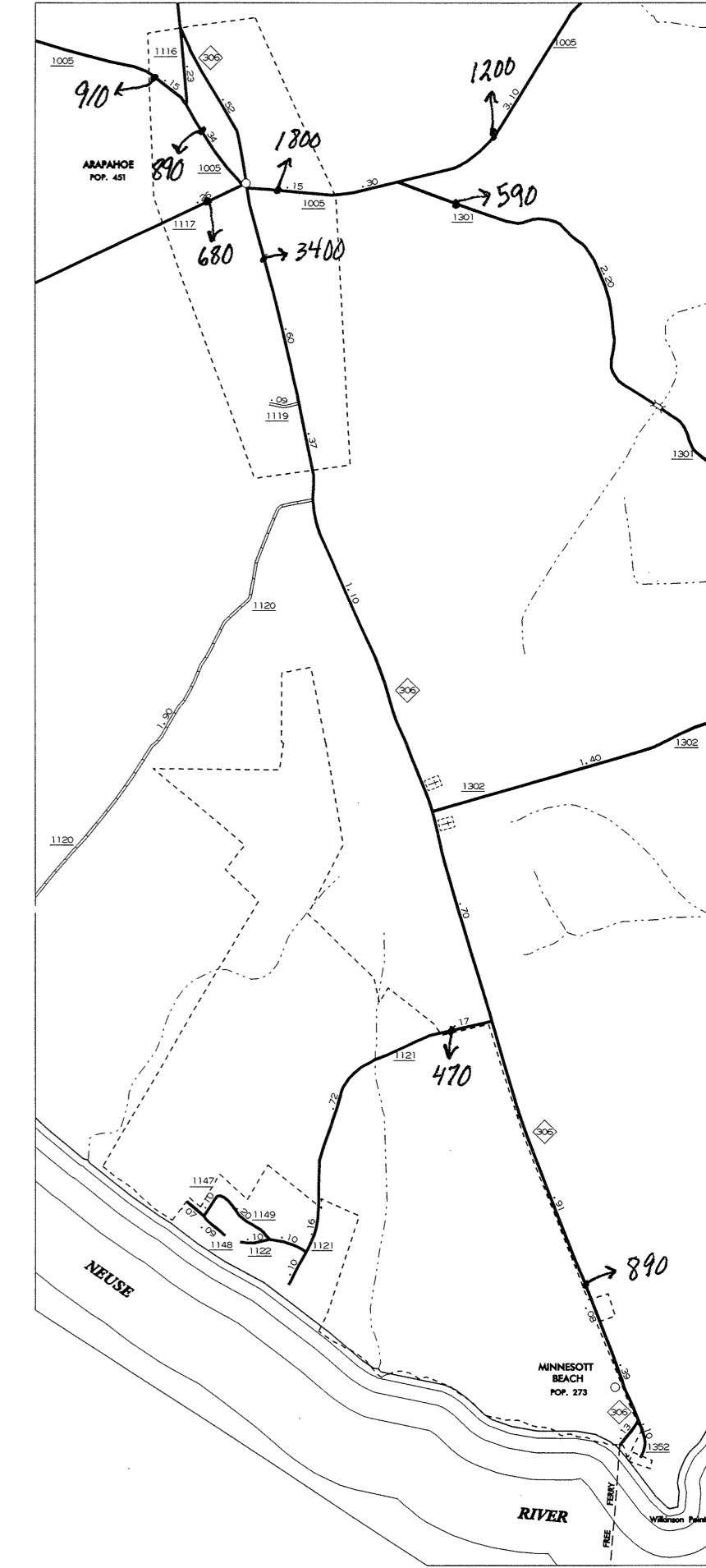


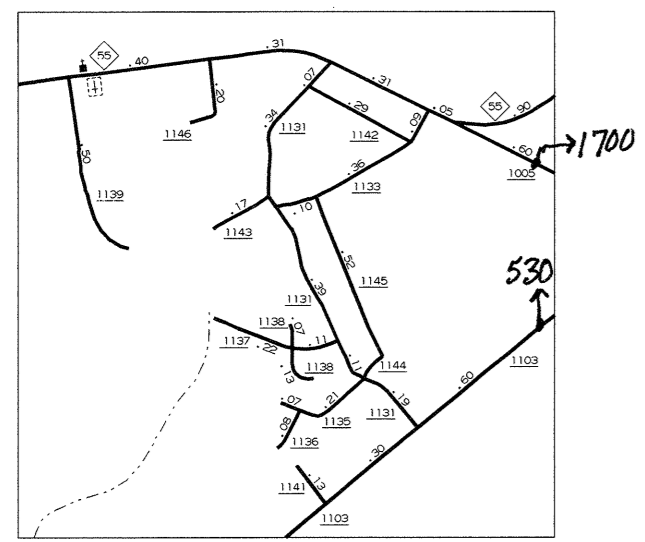
BAYBORO



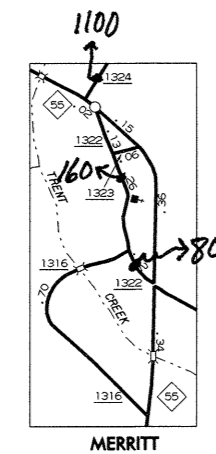
ORIENTAL



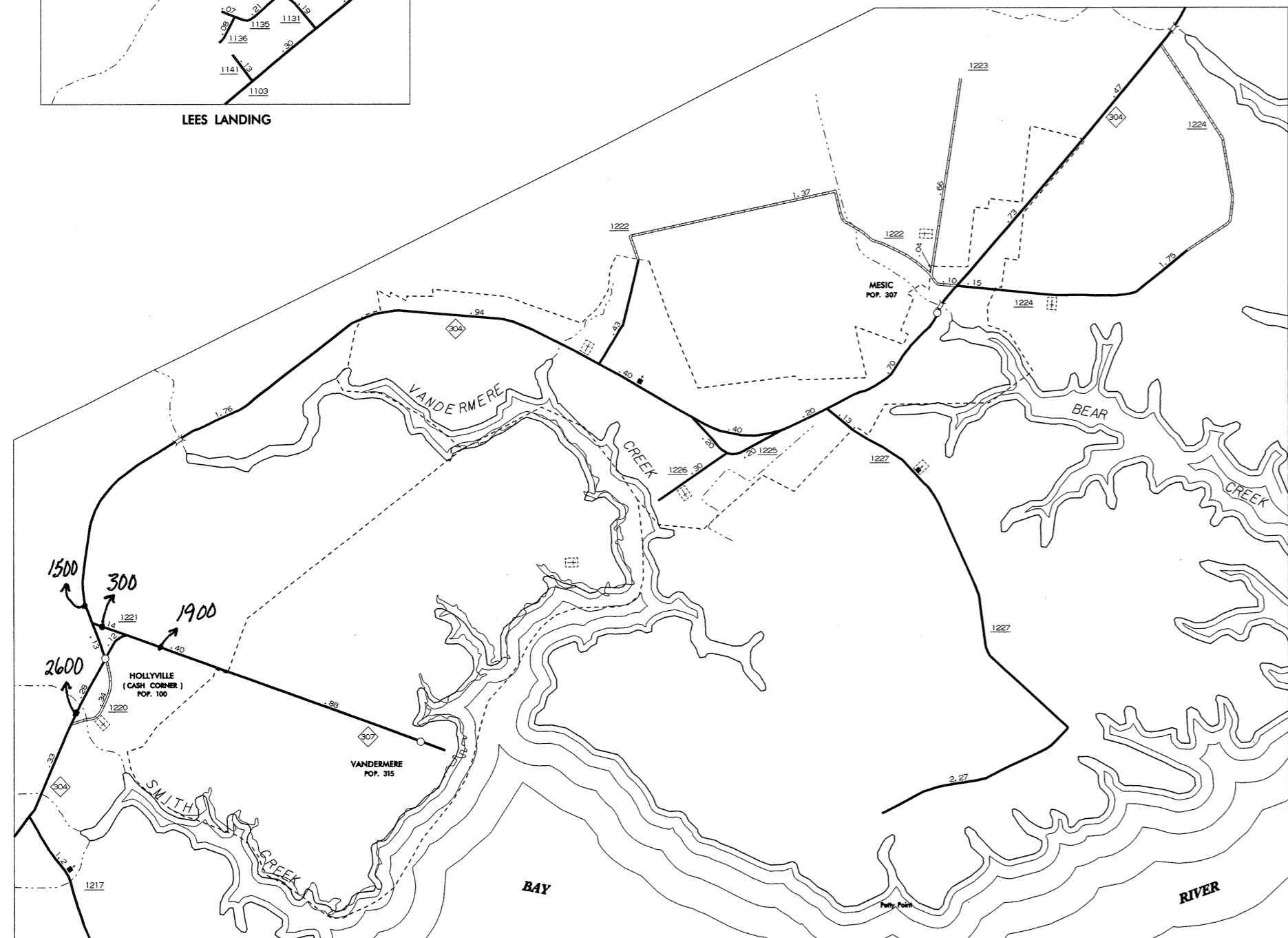
MINNESOTT BEACH ARAPAHOE



LEES LANDING



MERRITT



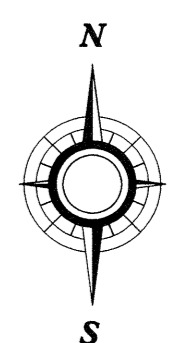
VANDERMERE



Some of the traffic estimates in this county were based on data collected after hurricane events in 1999. Contact the Traffic Survey Unit at (919) 733-9770 for information about a particular location or area.

N.C. Department of Transportation
Statewide Planning Branch
Traffic Survey Unit
1554 Mail Service Center
Raleigh, NC 27699-1554

1999
ANNUAL AVERAGE
DAILY TRAFFIC



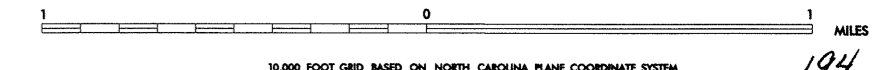
ENLARGED MUNICIPAL AND SUBURBAN AREAS

PAMLICO COUNTY

NORTH CAROLINA

PREPARED BY THE
NORTH CAROLINA DEPARTMENT OF TRANSPORTATION
DIVISION OF HIGHWAYS - GIS UNIT

IN COOPERATION WITH THE
U.S. DEPARTMENT OF TRANSPORTATION
FEDERAL HIGHWAY ADMINISTRATION



10,000 FOOT GRID BASED ON NORTH CAROLINA PLANE COORDINATE SYSTEM

COPIES OF THIS MAP ARE AVAILABLE FROM THE PUBLIC AT A NOMINAL COST. CONTACT THE DIVISION OF HIGHWAYS, DIVISION OF TRANSPORTATION, PAMLICO COUNTY, NORTH CAROLINA 27911

REVISED 11-1-99 RLK