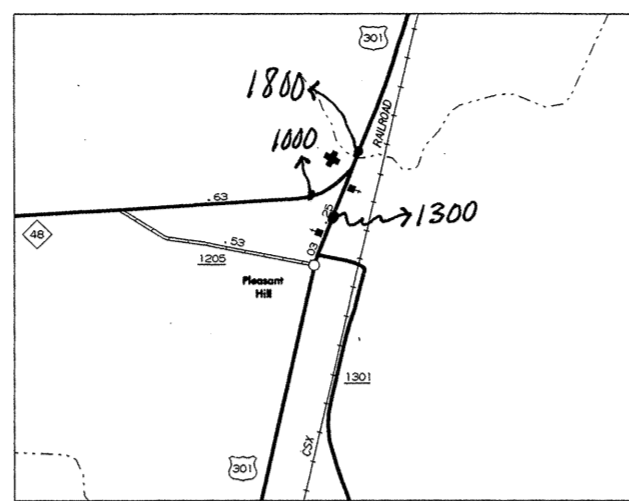
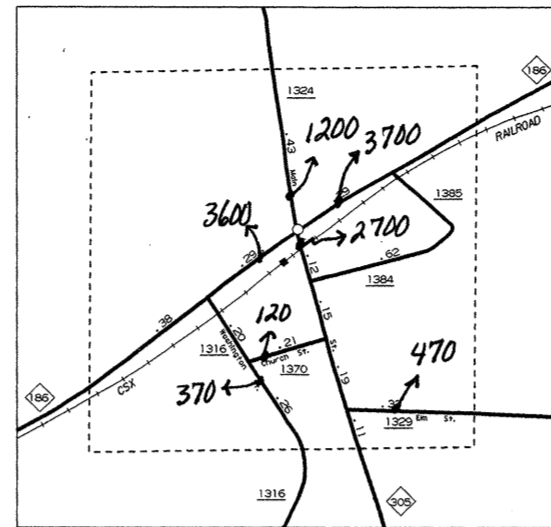


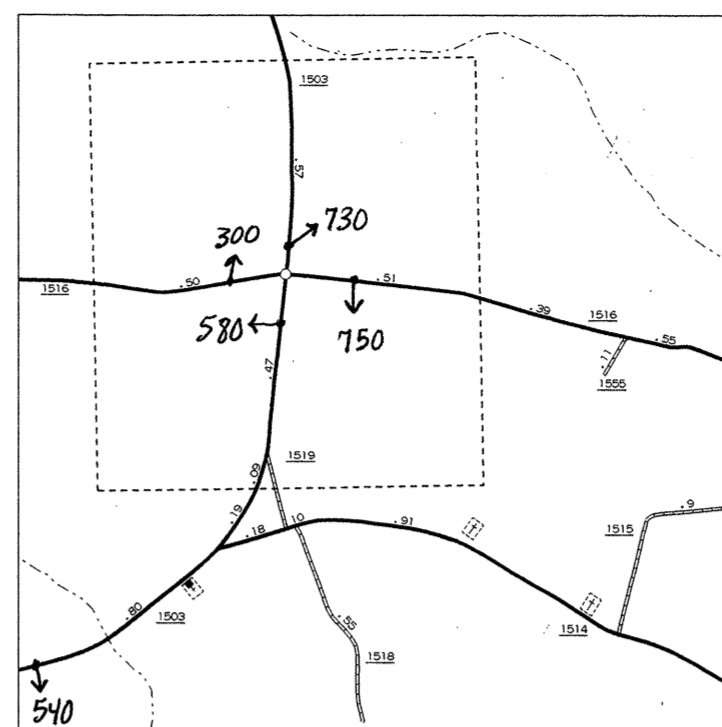
CONWAY  
POP. 1100



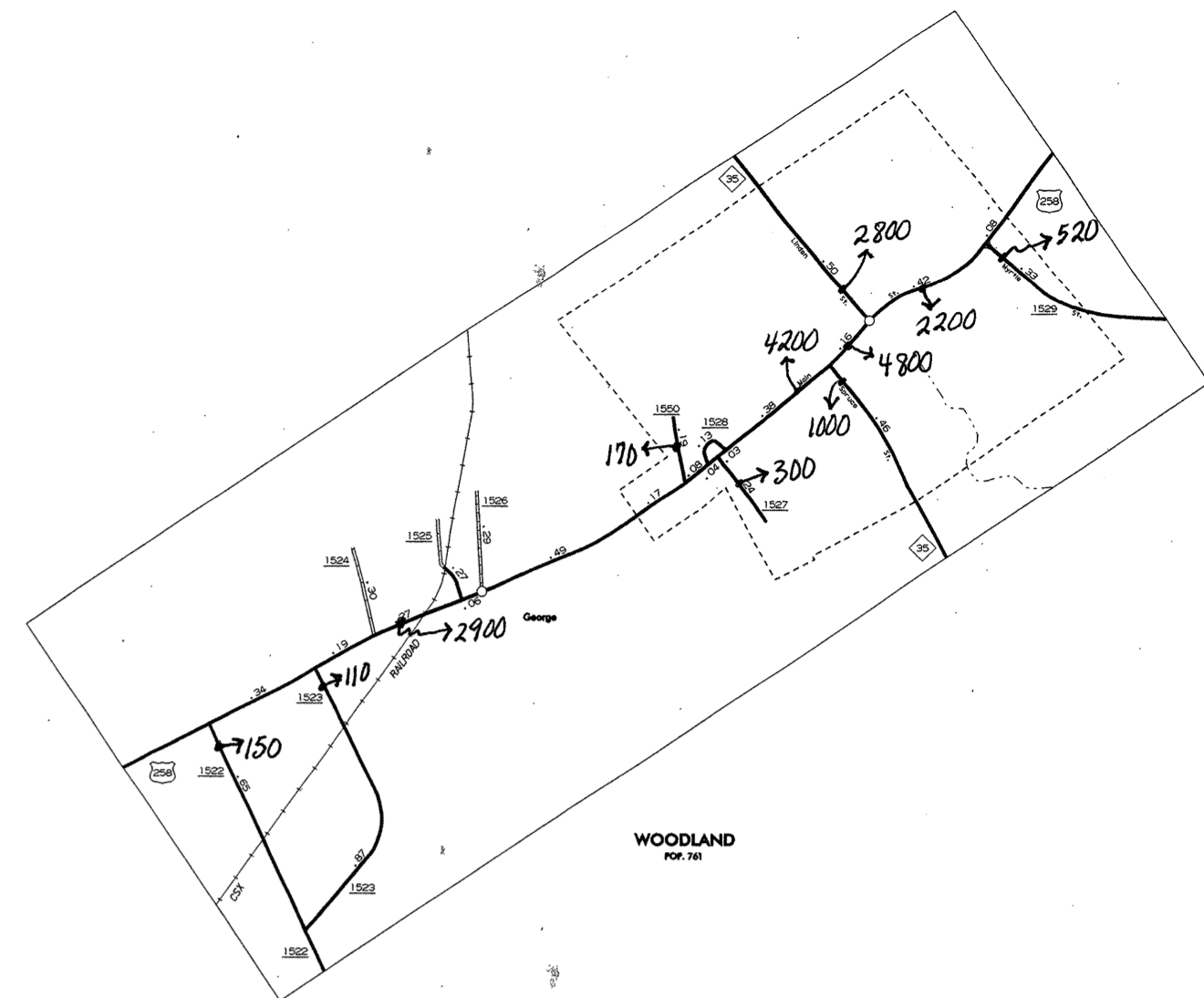
PLEASANT HILL



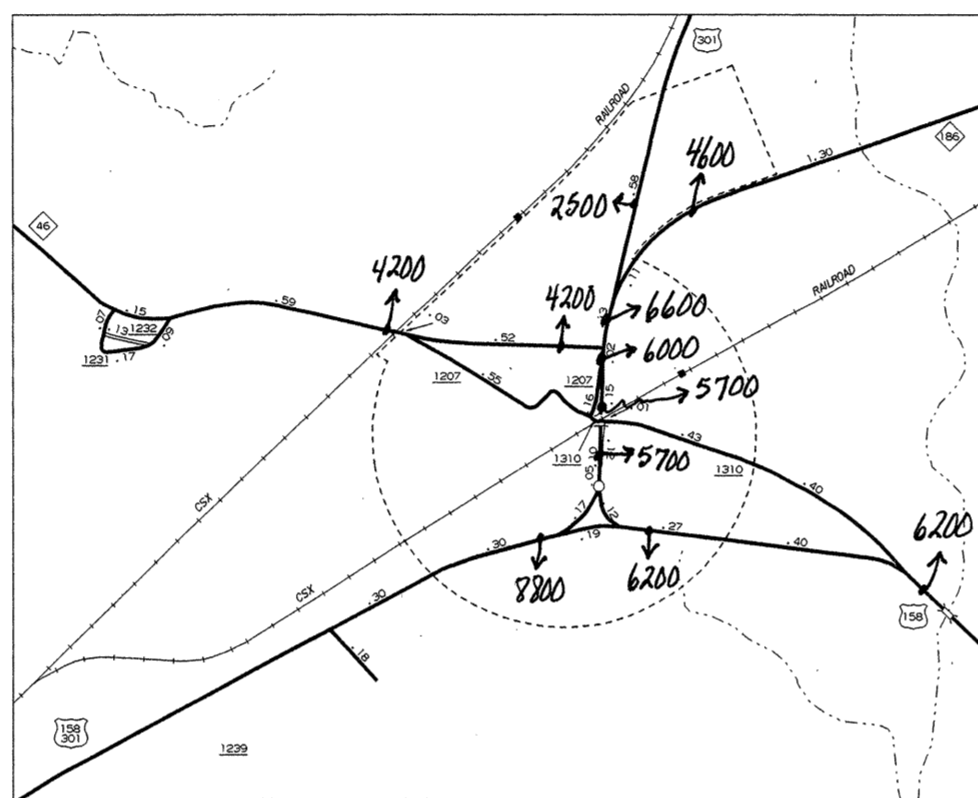
SEABOARD  
POP. 80



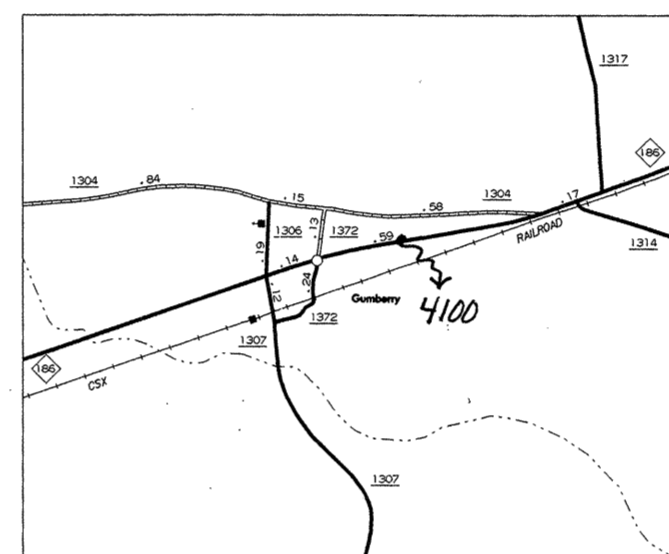
LASKER  
POP. 143



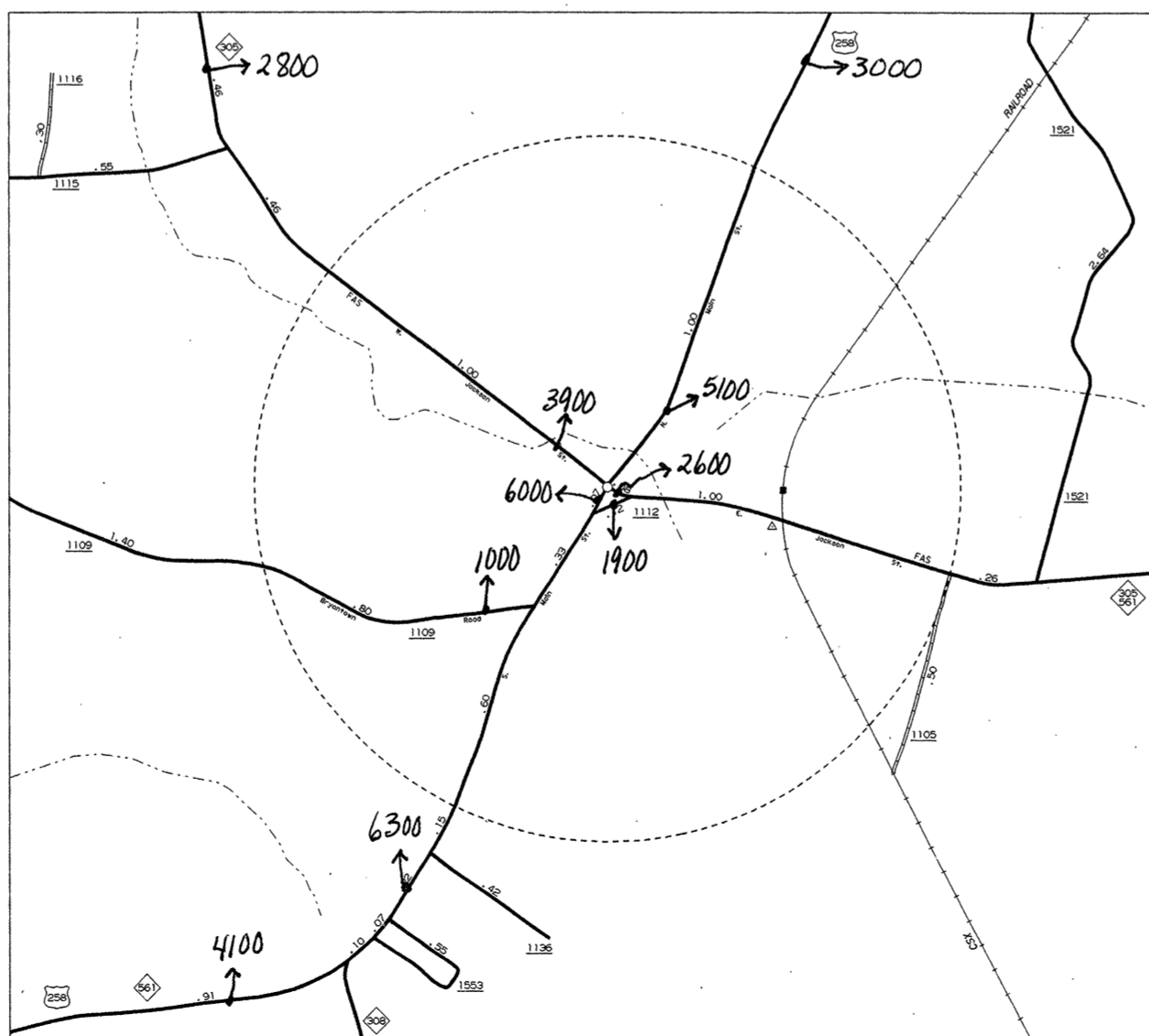
WOODLAND  
POP. 161



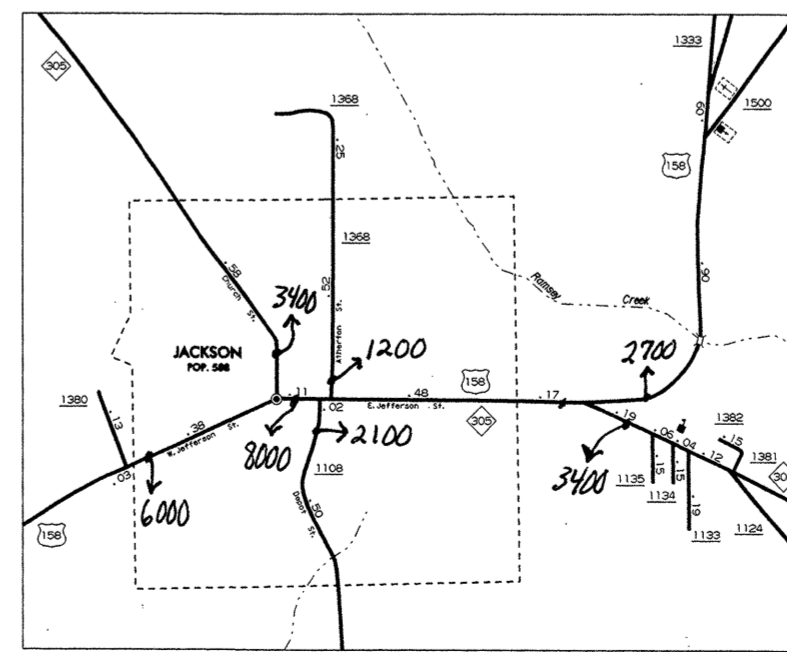
GARYSBURG  
POP. 1334



GUMBERRY



RICH SQUARE  
POP. 1207



JACKSON  
POP. 988

N.C. Department of Transportation  
Statewide Planning Branch  
Traffic Survey Unit  
1554 Mail Service Center  
Raleigh, NC 27699-1554



Some of the traffic estimates in this county were based on data collected after hurricane events in 1999. Contact the Traffic Survey Unit at (919) 733-9770 for information about a particular location or area.



**1999**  
**ANNUAL AVERAGE**  
**DAILY TRAFFIC**

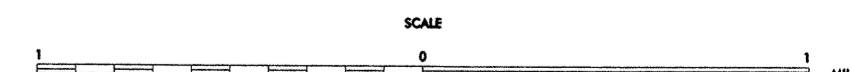
ENLARGED MUNICIPAL AND SUBURBAN AREAS

**NORTHAMPTON COUNTY**

NORTH CAROLINA

PREPARED BY THE  
NORTH CAROLINA DEPARTMENT OF TRANSPORTATION  
DIVISION OF HIGHWAYS - GIS UNIT

IN COOPERATION WITH THE  
U.S. DEPARTMENT OF TRANSPORTATION  
FEDERAL HIGHWAY ADMINISTRATION



10,000 FOOT GRID BASED ON NORTH CAROLINA PLANE COORDINATE SYSTEM

CORNER OF THIS MAP AREA AVAILABLE  
 FROM THE OFFICE OF THE STATE ENGINEER  
 DIVISION OF HIGHWAYS  
 RAILROAD, NORTH CAROLINA, 27611

REVISED