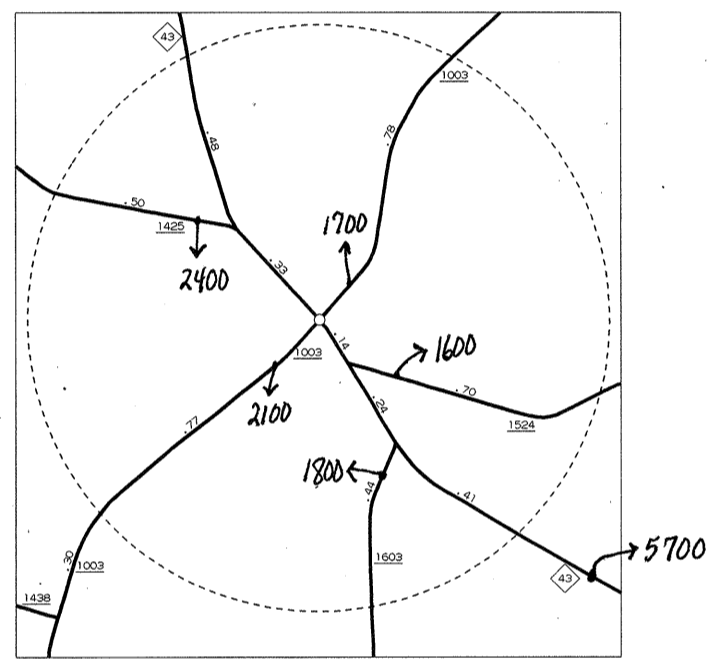
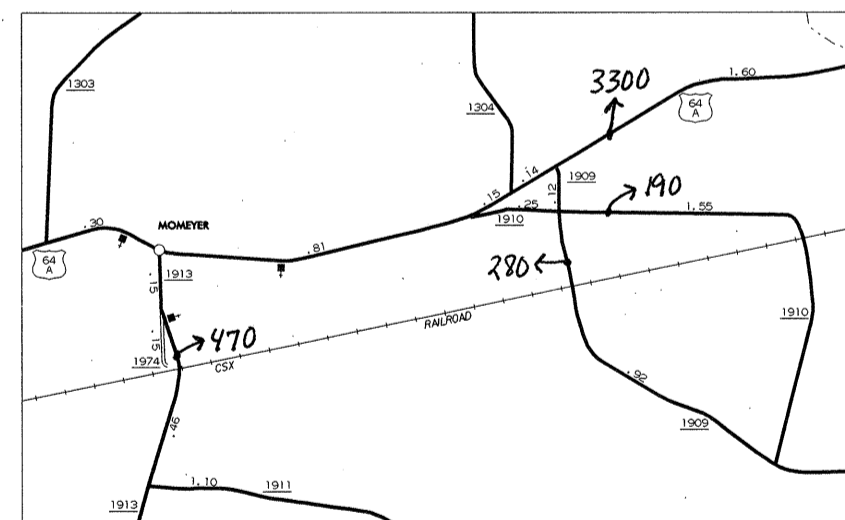


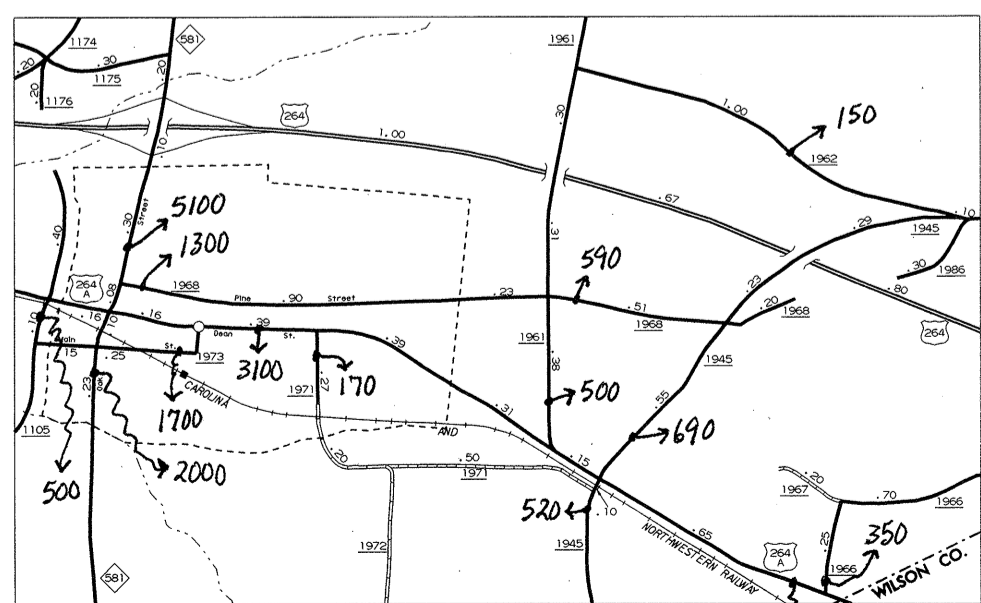
SPRING HOPE
POP. 1,216



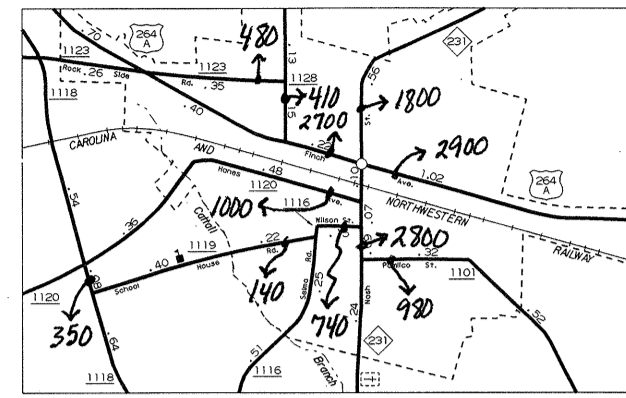
RED OAK
POP. 280



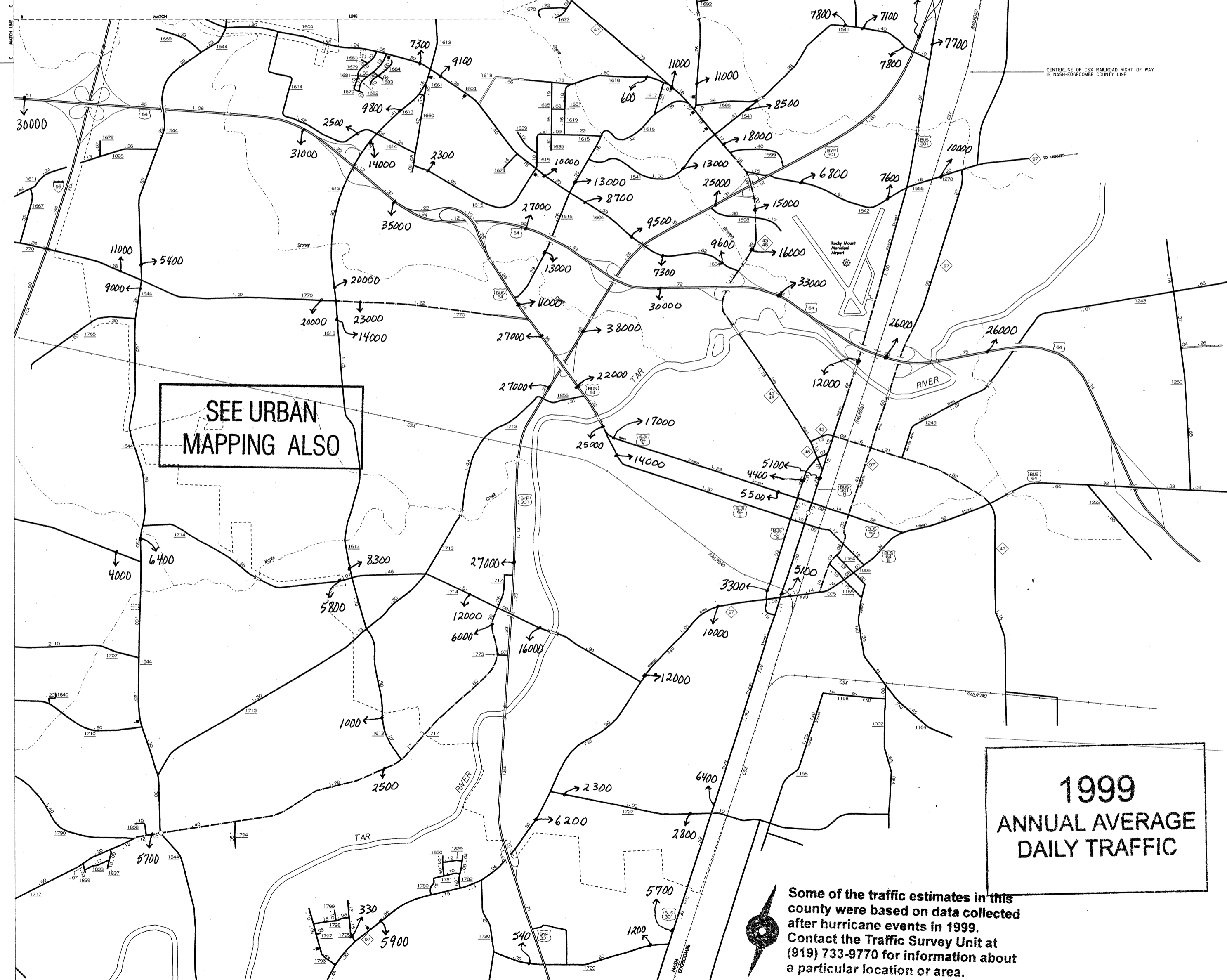
MOMEYER



BAILEY
POP. 548



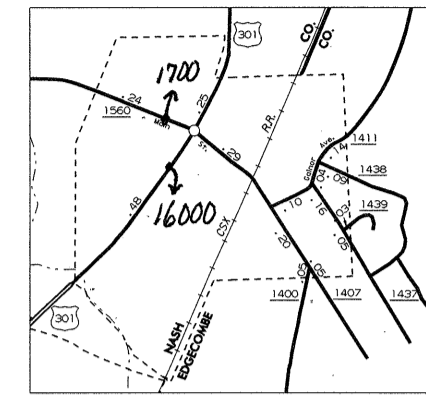
MIDDLESEX
POP. 729



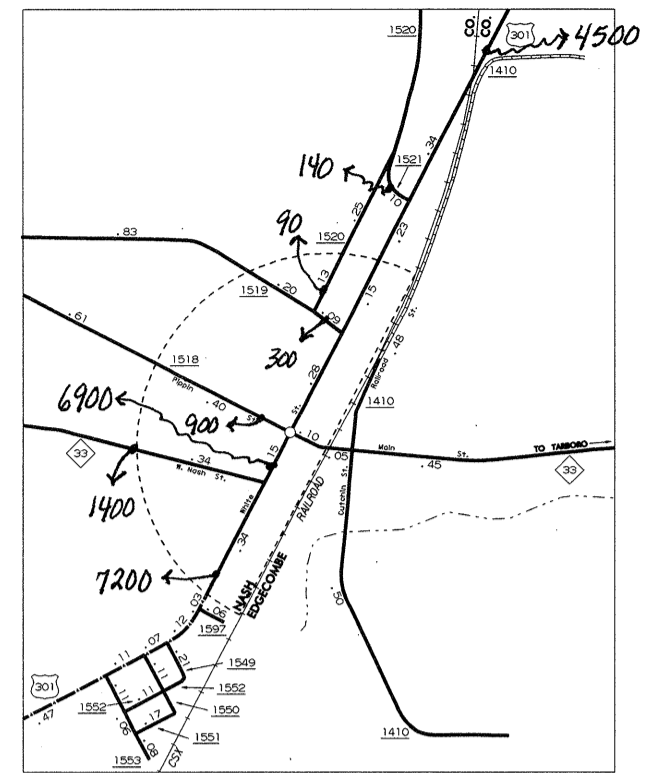
SEE URBAN
MAPPING ALSO

1999
ANNUAL AVERAGE
DAILY TRAFFIC

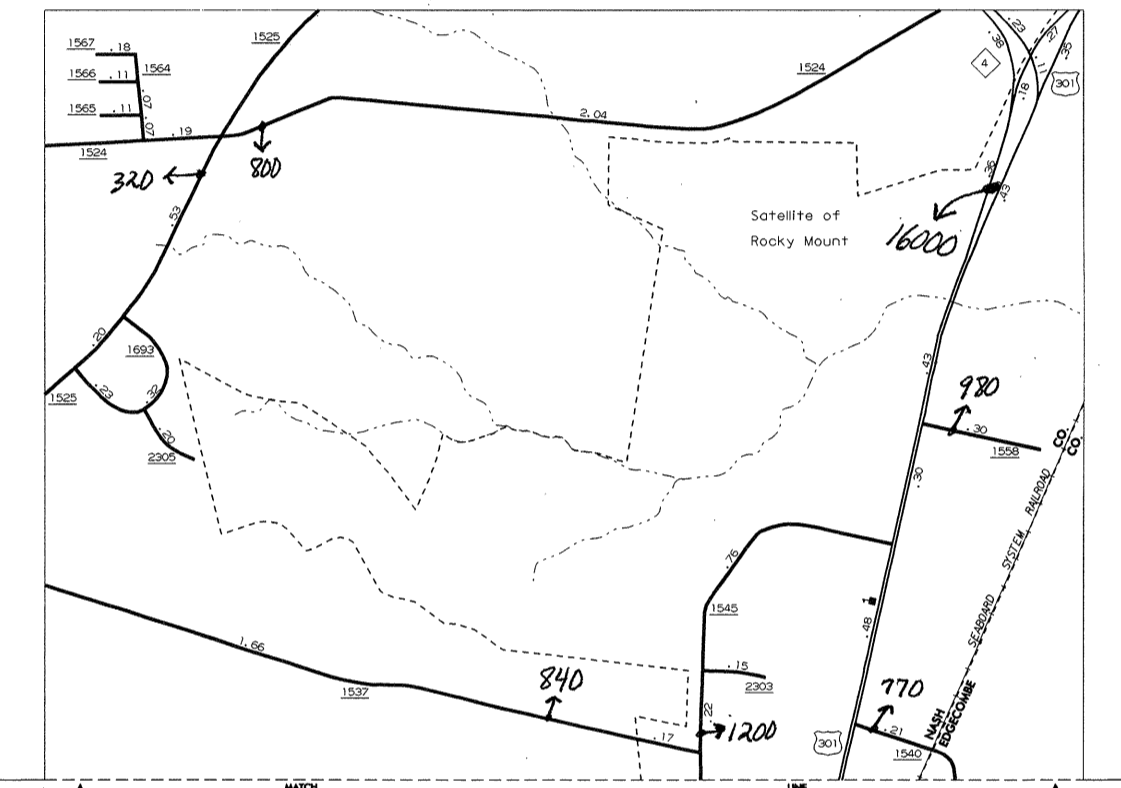
Some of the traffic estimates in this county were based on data collected after hurricane events in 1999. Contact the Traffic Survey Unit at (919) 733-9770 for information about a particular location or area.



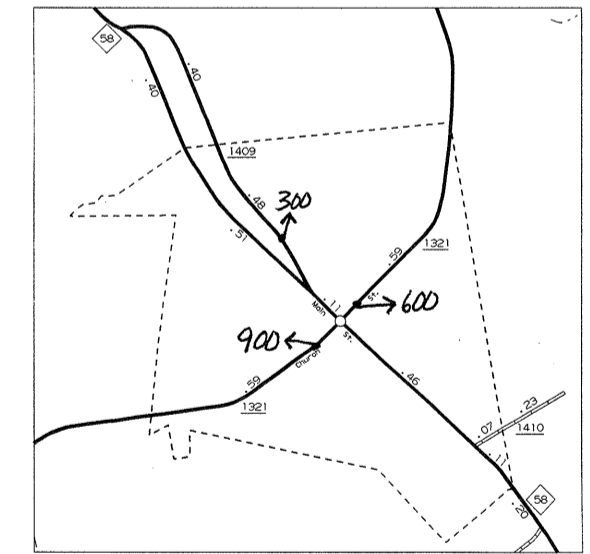
BATTLEBORO
POP. 1,583
[NASH 231
EDGECOMBE 288]



WHITAKERS
POP. 802
[EDGECOMBE 93
NASH 1,227]



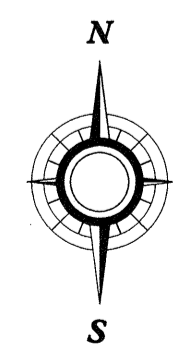
CASTALIA
POP. 257



WEST MOUNT

ROCKY MOUNT
POP. 30,383
[NASH 32,992
EDGECOMBE 17,291]

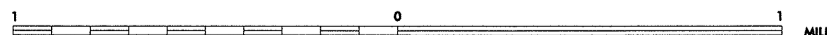
N.C. Department of Transportation
Statewide Planning Branch
Traffic Survey Unit
1554 Mail Service Center
Raleigh, NC 27699-1554



ENLARGED MUNICIPAL AND SUBURBAN AREAS
NASH COUNTY
NORTH CAROLINA

PREPARED BY THE
NORTH CAROLINA DEPARTMENT OF TRANSPORTATION
DIVISION OF HIGHWAYS - GIS UNIT

IN COOPERATION WITH THE
U.S. DEPARTMENT OF TRANSPORTATION
FEDERAL HIGHWAY ADMINISTRATION
SCALE



NASH COUNTY

REVISED
11-1-99 DDP