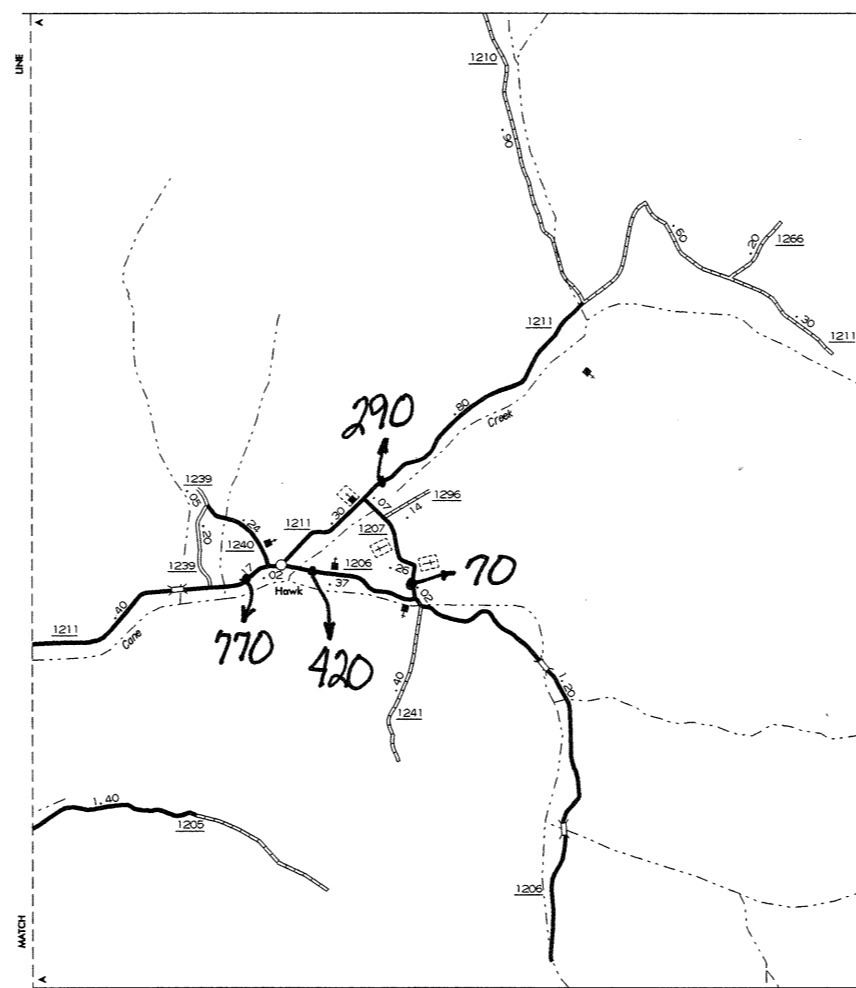
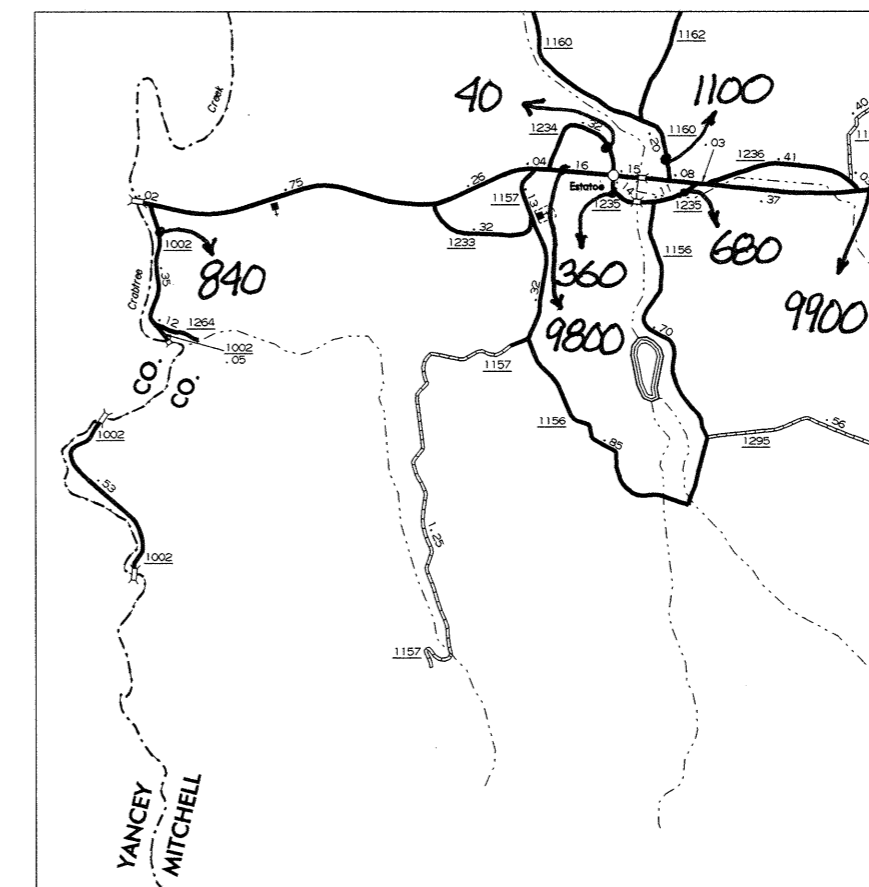


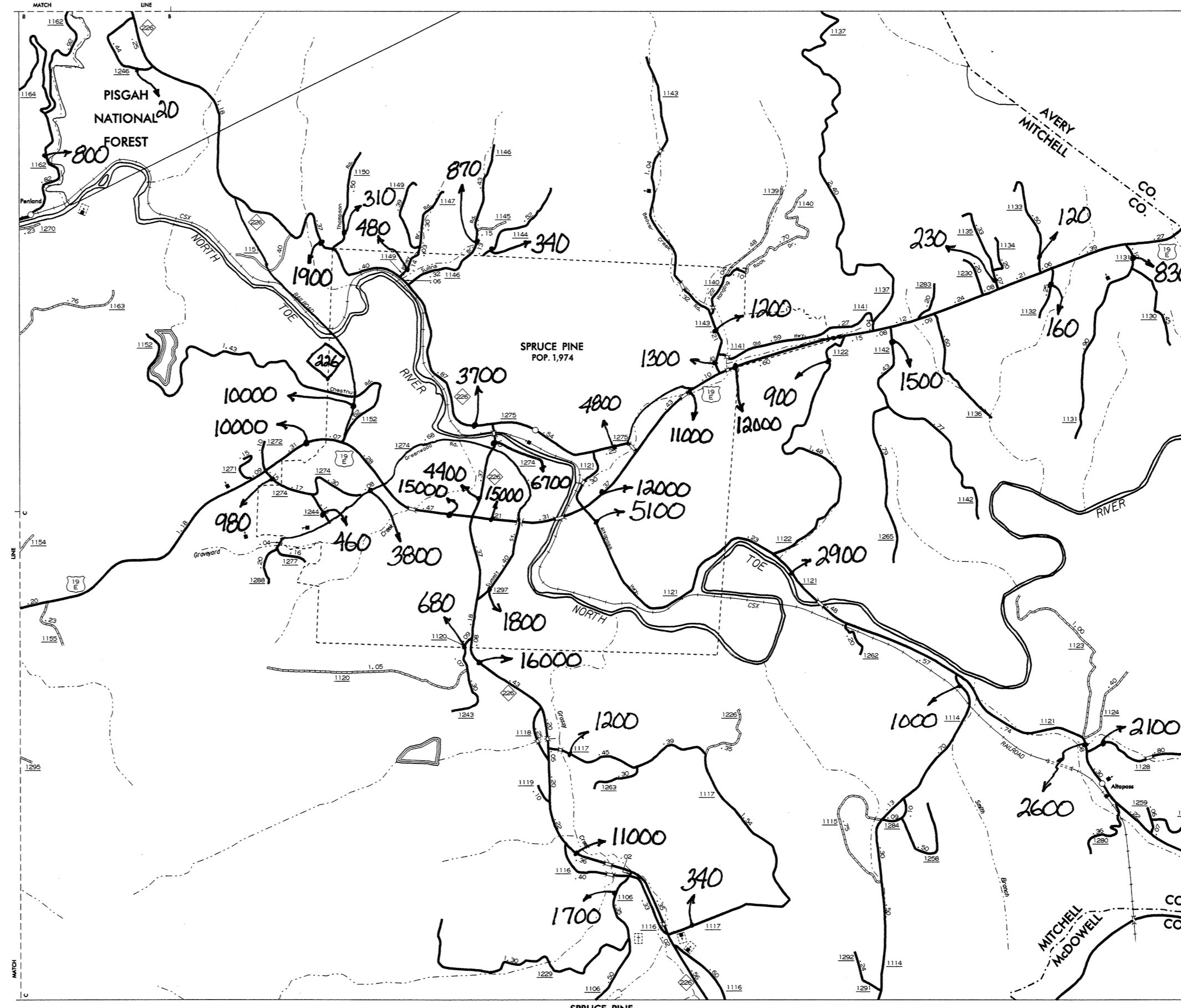
BAKERSVILLE AND VICINITY



HAWK



ESTATOE



SPRUCE PINE

N.C. Department of Transportation  
 Statewide Planning Branch  
 Traffic Survey Unit  
 1554 Mail Service Center  
 Raleigh, NC 27699-1554

**1999  
 ANNUAL AVERAGE  
 DAILY TRAFFIC**



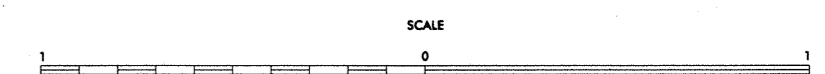
ENLARGED MUNICIPAL AND SUBURBAN AREAS

**MITCHELL COUNTY**

NORTH CAROLINA

PREPARED BY THE  
 NORTH CAROLINA DEPARTMENT OF TRANSPORTATION  
 DIVISION OF HIGHWAYS - GIS UNIT

IN COOPERATION WITH THE  
 U.S. DEPARTMENT OF TRANSPORTATION  
 FEDERAL HIGHWAY ADMINISTRATION



174

COPIES OF THIS MAP ARE AVAILABLE  
 TO THE PUBLIC AT A NOMINAL COST.  
 N.C. DEPARTMENT OF TRANSPORTATION  
 RALEIGH, NORTH CAROLINA 27611

REVISED  
 11-16-95 244