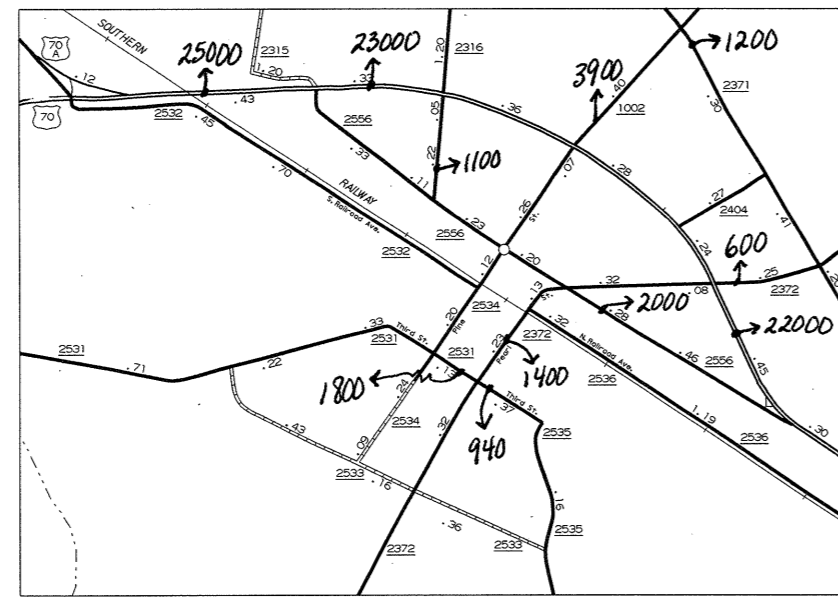
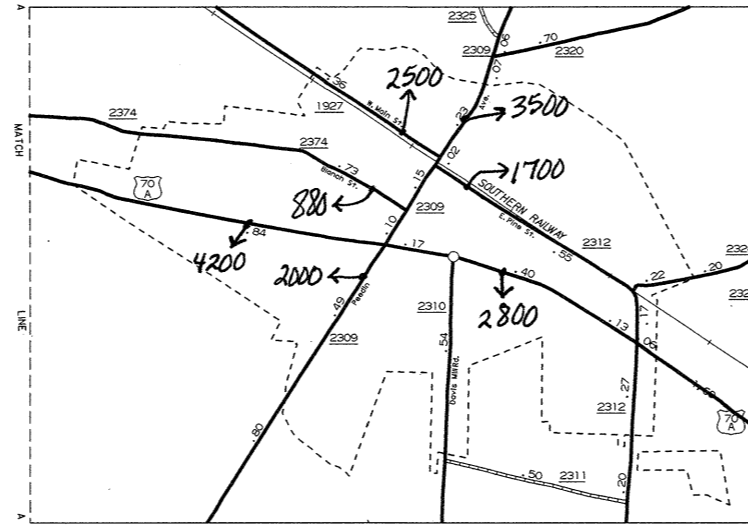


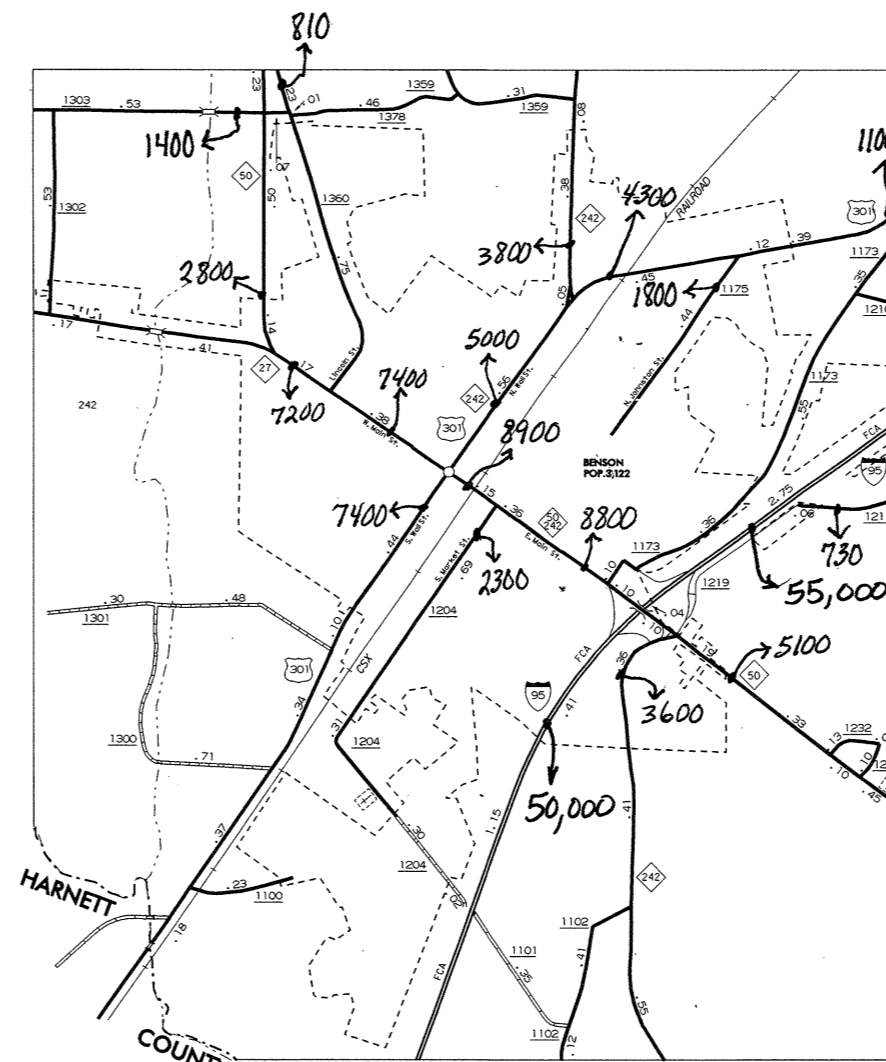
WILSON MILLS



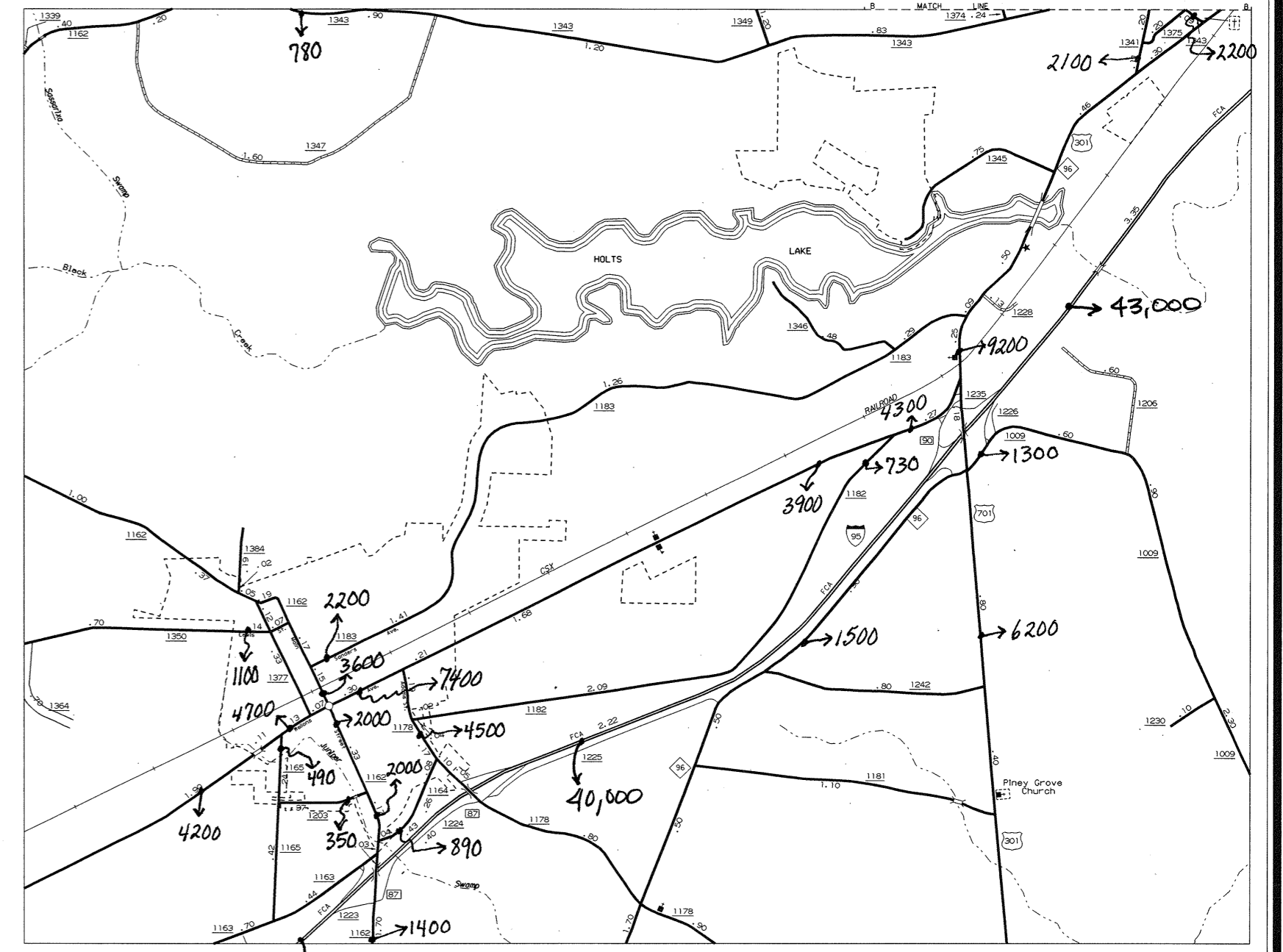
PRINCETON
POP. 134



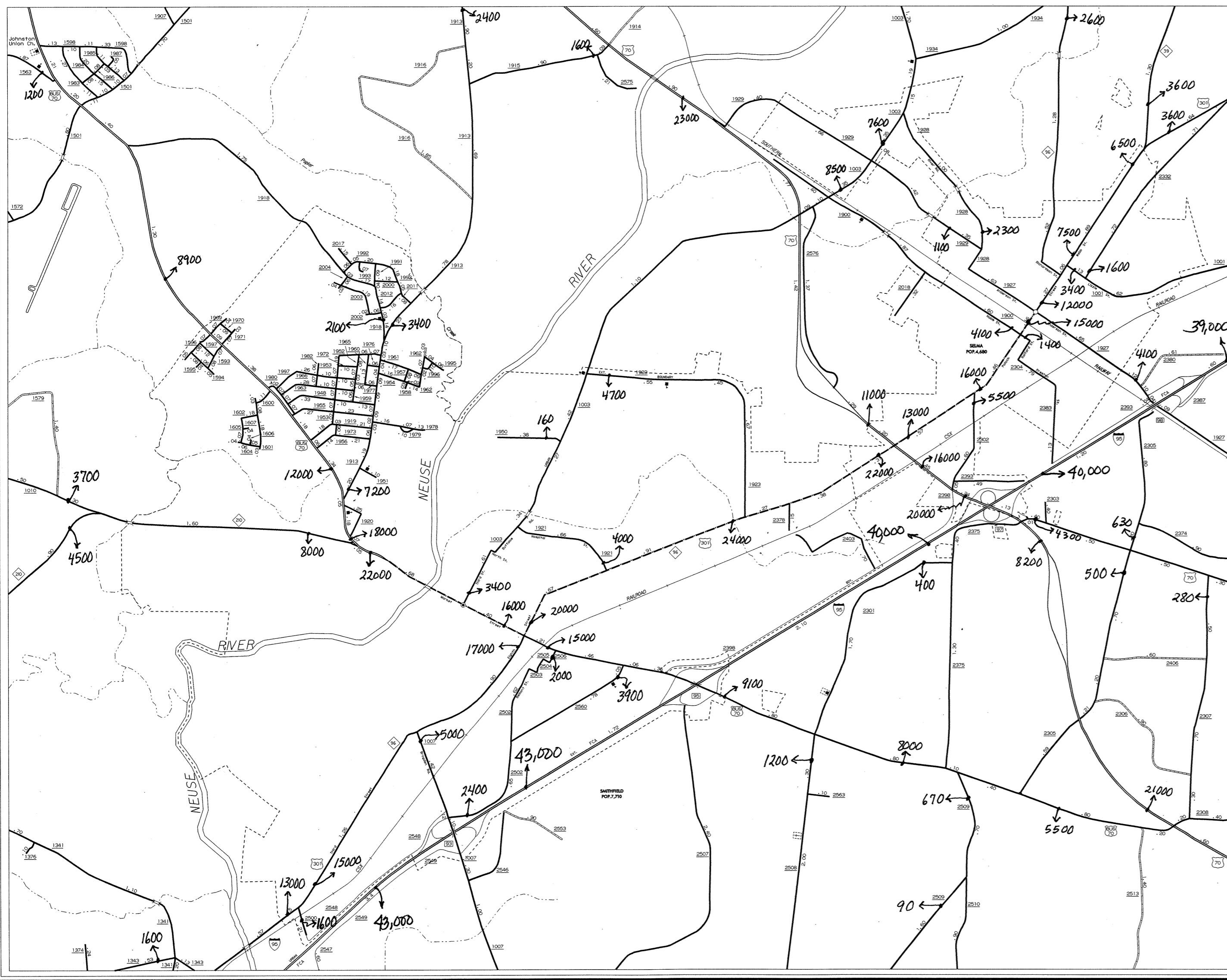
PINE LEVEL
POP. 34



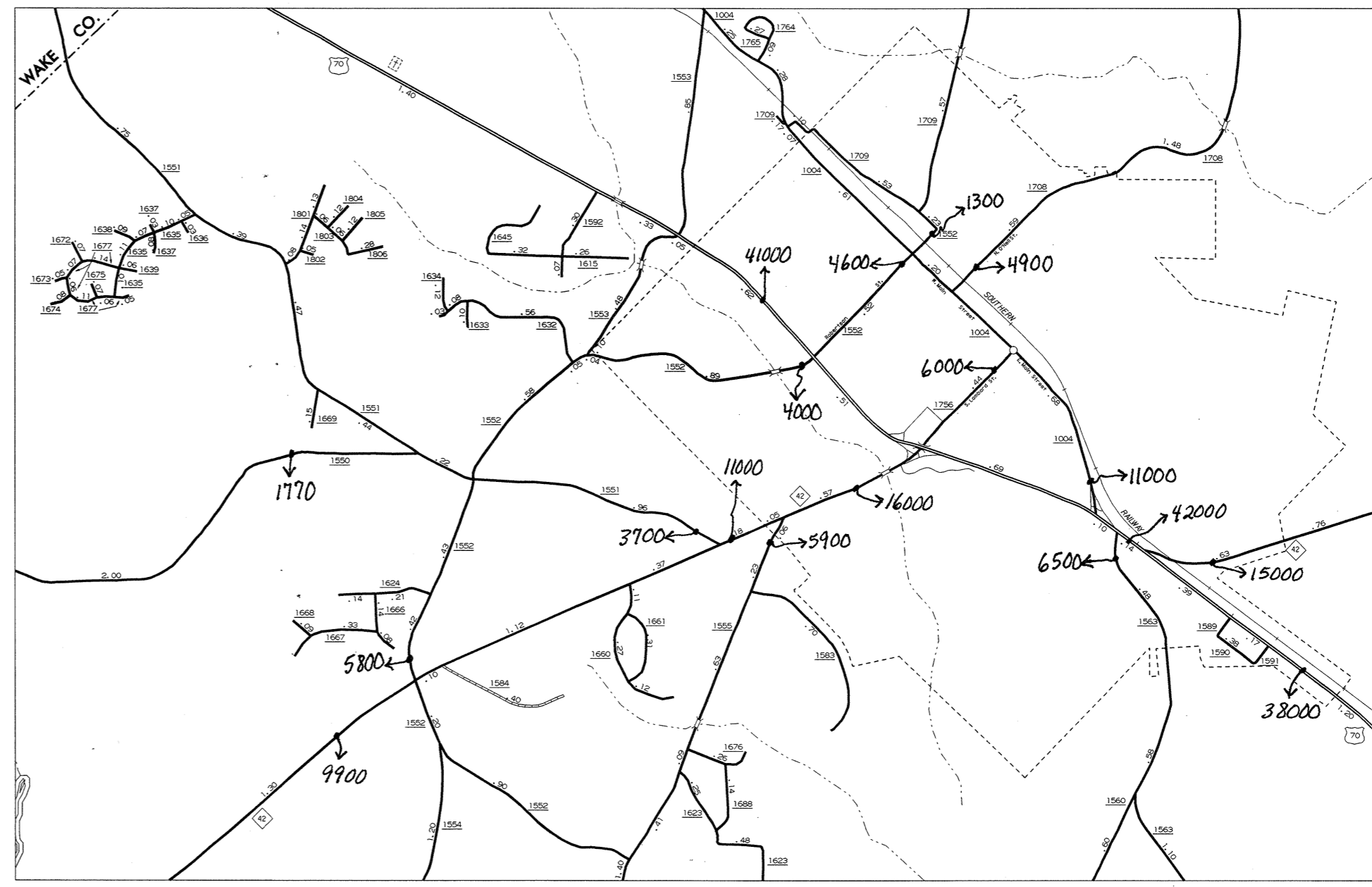
BENSON
POP. 134



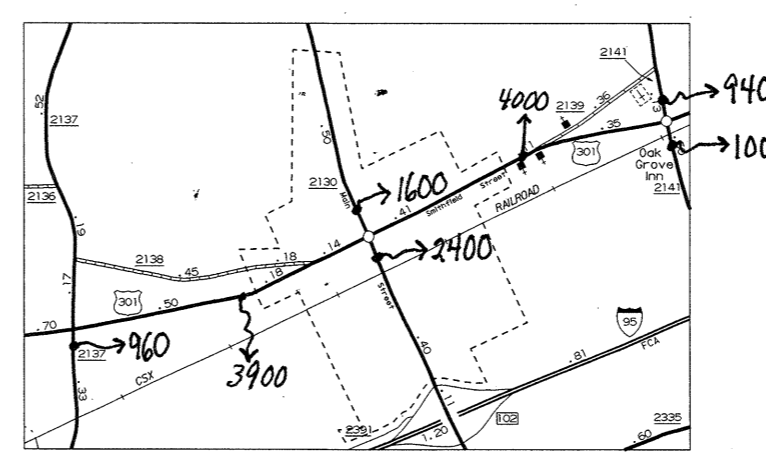
FOUR OAKS
POP. 134



SMITHFIELD - SELMA



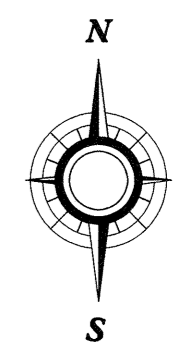
CLAYTON
POP. 134



MICRO
POP. 40

1999 ANNUAL AVERAGE DAILY TRAFFIC

N.C. Department of Transportation
Statewide Planning Branch
Traffic Survey Unit
1554 Mail Service Center
Raleigh, NC 27699-1554



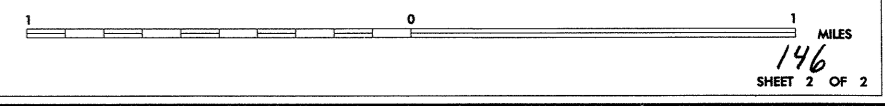
JOHNSTON COUNTY NORTH CAROLINA

PREPARED BY THE
NORTH CAROLINA DEPARTMENT OF TRANSPORTATION
DIVISION OF HIGHWAYS - GIS UNIT

IN COOPERATION WITH THE
UNITED STATES DEPARTMENT OF TRANSPORTATION
FEDERAL HIGHWAY ADMINISTRATION
SCALE

Some of the traffic estimates in this county were based on data collected after hurricane events in 1999. Contact the Traffic Survey Unit at (919) 733-9770 for information about a particular location or area.

10,000 FOOT GRID BASED ON NORTH CAROLINA PLANE COORDINATE SYSTEM



COPIES OF THE MAP ARE AVAILABLE:
AT A FURNISHING COST:
FROM THE DIVISION OF HIGHWAYS
DIVISION OF HIGHWAYS
MAILING NORTH CAROLINA 27611

REVISED	DATE
1-1-99	SE
1-1-99	LM