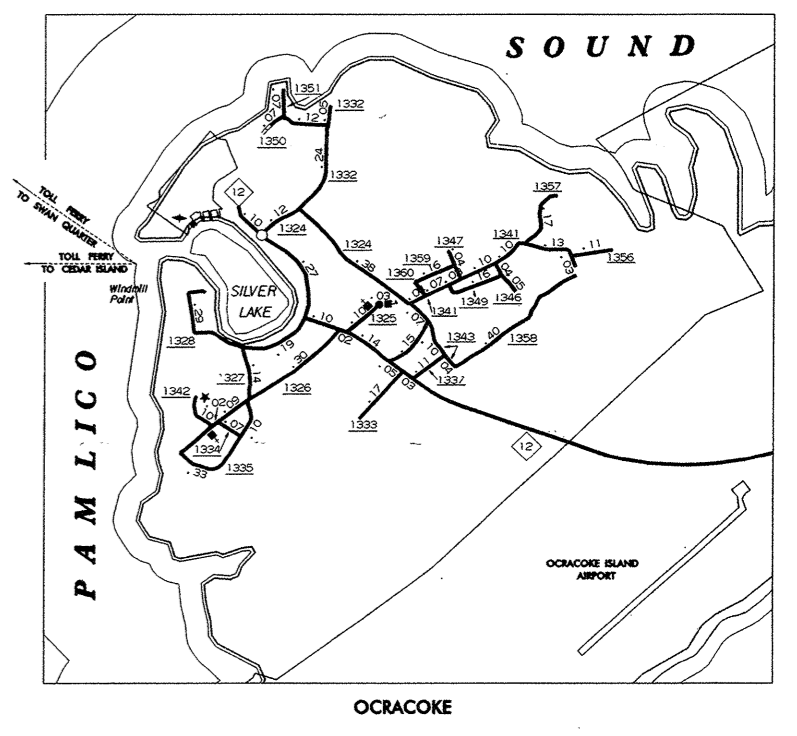
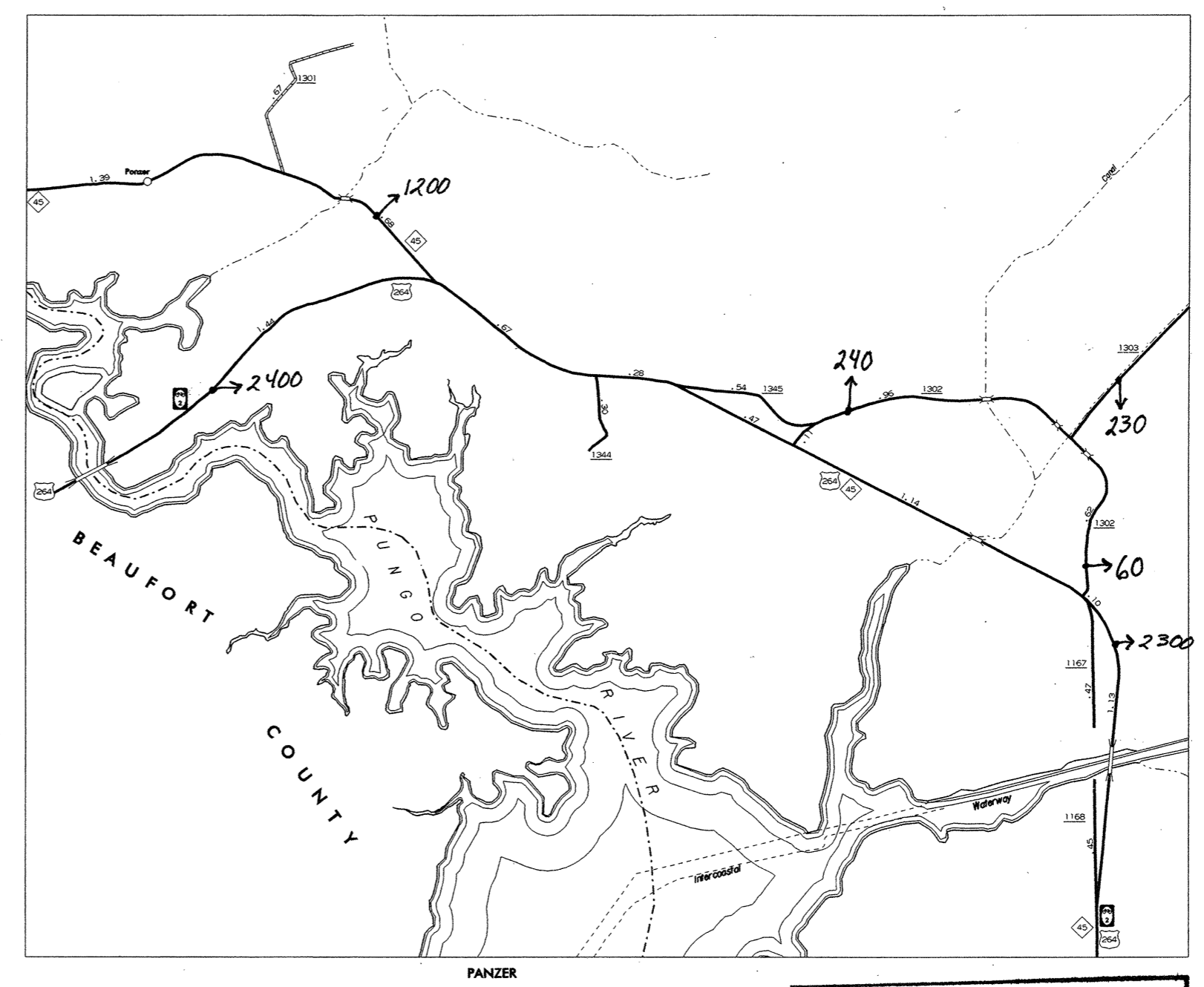
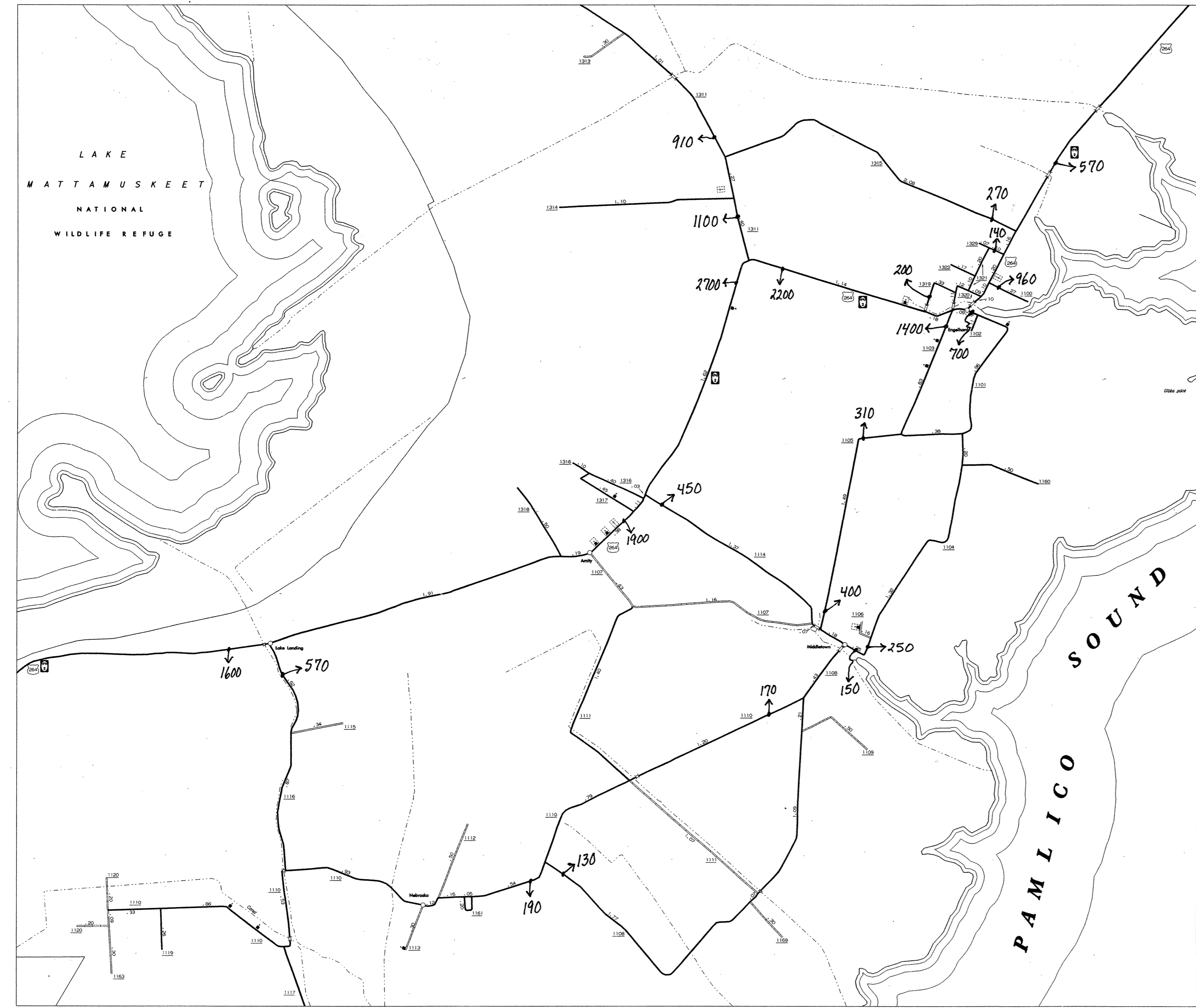
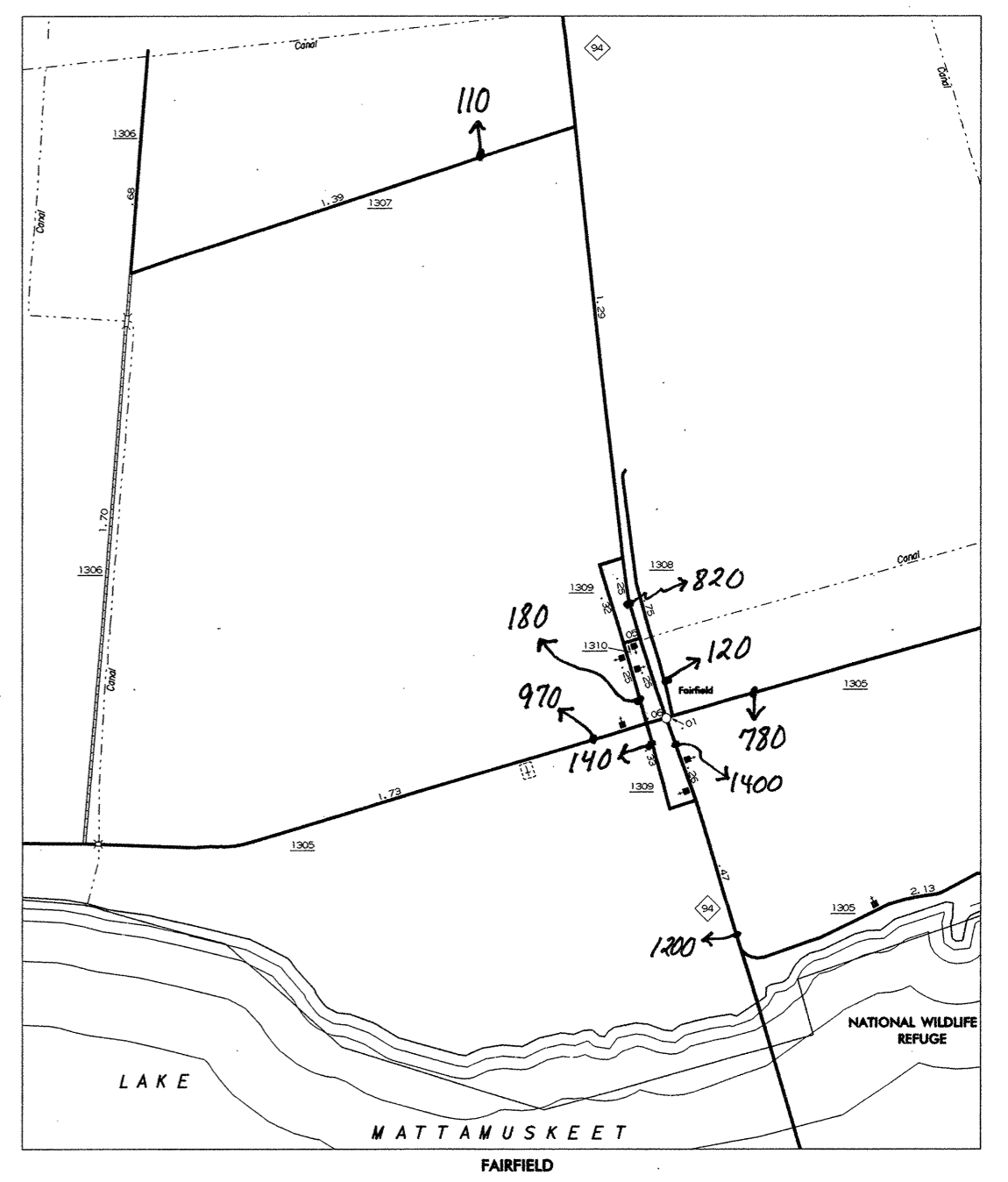
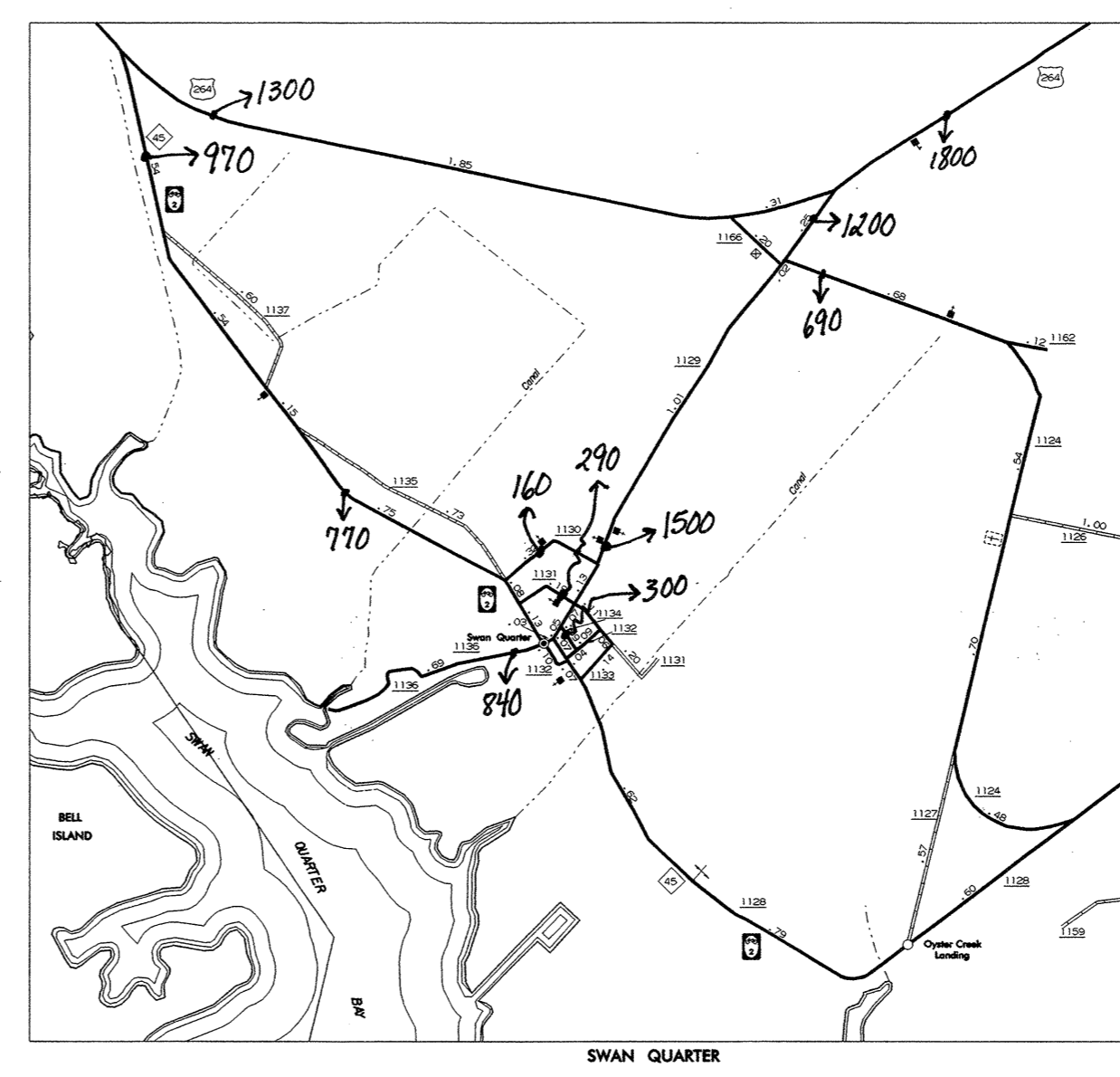
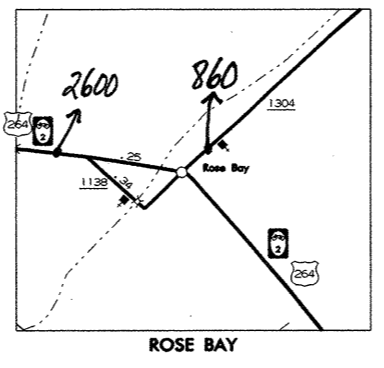
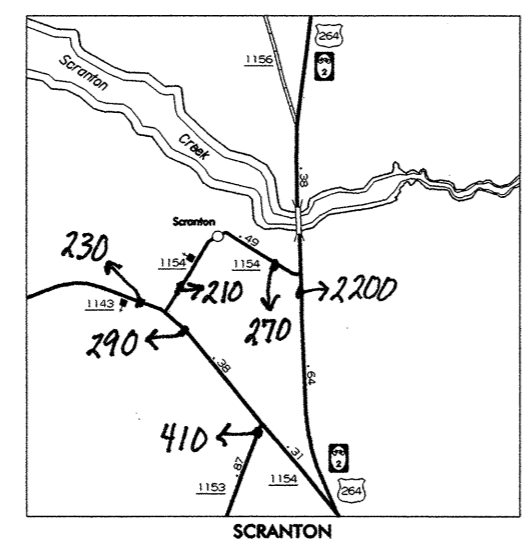




Some of the traffic estimates in this county were based on data collected after hurricane events in 1999. Contact the Traffic Survey Unit at (919) 733-9770 for information about a particular location or area.

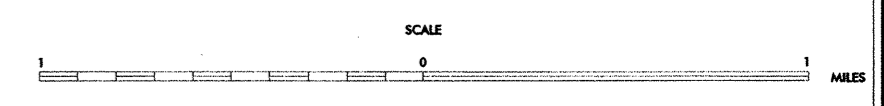


N.C. Department of Transportation
Statewide Planning Branch
Traffic Survey Unit
1554 Mail Service Center
Raleigh, NC 27699-1554

1999
ANNUAL AVERAGE
DAILY TRAFFIC



ENLARGED MUNICIPAL AND SUBURBAN AREAS
HYDE COUNTY
NORTH CAROLINA
PREPARED BY THE
NORTH CAROLINA DEPARTMENT OF TRANSPORTATION
DIVISION OF HIGHWAYS - GIS UNIT
IN COOPERATION WITH THE
U.S. DEPARTMENT OF TRANSPORTATION
FEDERAL HIGHWAY ADMINISTRATION



THIS IS A COPY OF THIS MAP AS AVAILABLE TO THE PUBLIC AT A NOMINAL COST. ADDRESS: NORTH CAROLINA DEPARTMENT OF TRANSPORTATION, DIVISION OF HIGHWAYS, RALEIGH, NORTH CAROLINA, 27611
 REVISED 1-1-95 FOR