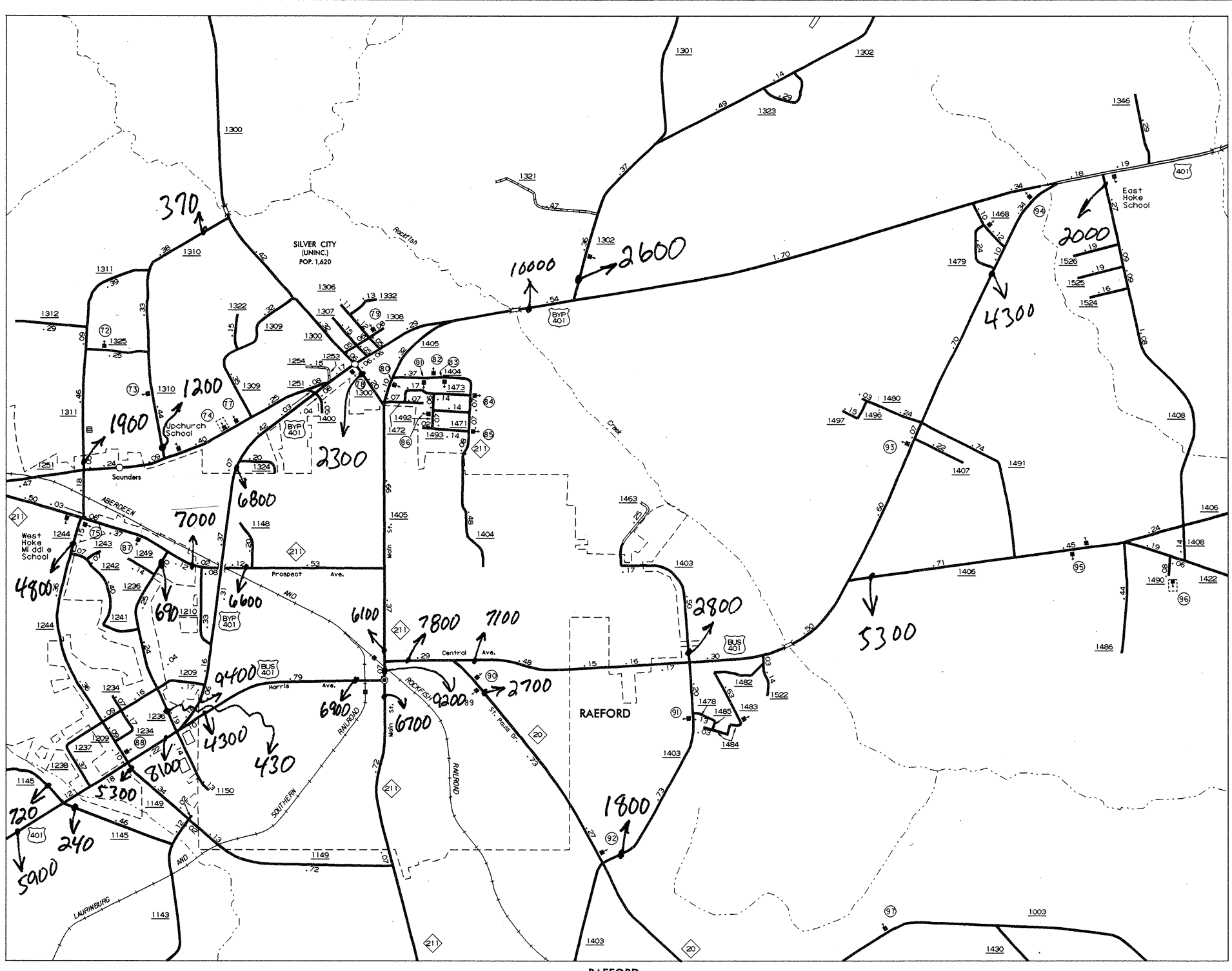


Some of the traffic estimates in this county were based on data collected after hurricane events in 1999. Contact the Traffic Survey Unit at (919) 733-9770 for information about a particular location or area.

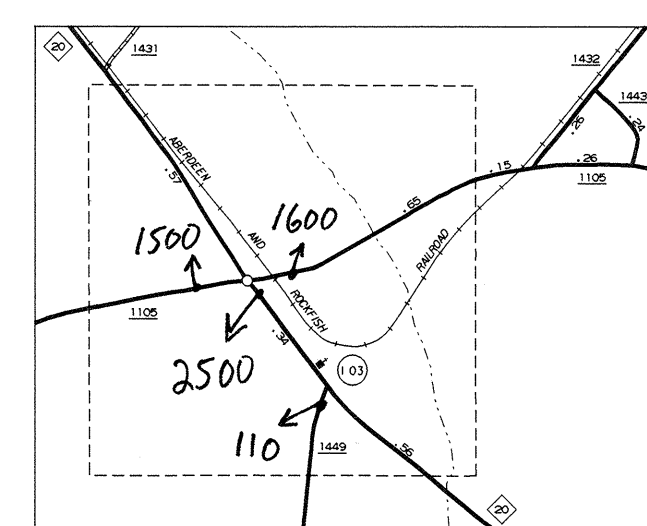
1999 ANNUAL AVERAGE DAILY TRAFFIC

N.C. Department of Transportation
Statewide Planning Branch
Traffic Survey Unit
1554 Mail Service Center
Raleigh, NC 27699-1554

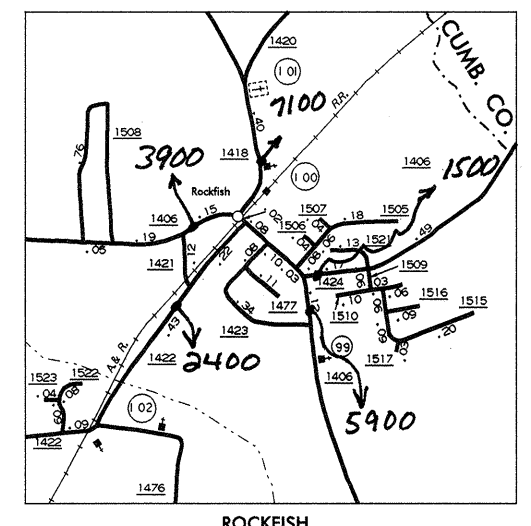
- LEGEND**
- PRIMITIVE OR UNIMPROVED ROAD
 - GRADED AND DRAINED ROAD
 - SOIL/GRAVEL OR STONE SURFACED ROAD
 - HARD SURFACED ROAD
 - 4 LANE UNDIVIDED HIGHWAY
 - DIVIDED HIGHWAY
 - HIGHWAY WITH FRONTAGE ROADS
 - FULL CONTROL ACCESS
 - NON-SYSTEM ROAD
 - PROJECTED LOCATION
 - INTERSECTION DISTANCE
 - TRAFFIC CIRCLE
 - HIGHWAY INTERCHANGE
 - DETAILED HIGHWAY INTERCHANGE
 - ROAD THROUGH MOUNTAIN PASS
 - HIGHWAY BRIDGE
 - OVERPASS
 - UNDERPASS
 - DRAW SPAN ON BRIDGE
 - HIGHWAY TUNNEL
 - FORD
 - INTERSTATE HIGHWAY
 - U.S. NUMBERED HIGHWAY
 - N.C. NUMBERED HIGHWAY
 - U.S. NUMBERED BICYCLE ROUTE
 - N.C. NUMBERED BICYCLE ROUTE
 - INTERSTATE INTERCHANGE NUMBER
 - SECONDARY ROAD NUMBER
 - CABLE
 - RAILROAD ANY NUMBER OF TRACKS USED BY SINGLE OPERATING COMPANY
 - RAILROAD NUMBER OF TRACKS USED BY MORE THAN ONE OPERATING RIGHTS-OF-WAY
 - RAILROAD STATION
 - GRADE CROSSING
 - UNDERPASS
 - RAILROAD TUNNEL
 - INSET AREA
 - URBAN EXTENSION
 - BOUNDARY LINE
 - RESERVATION OR PARK BOUNDARY
 - CITY LIMIT
 - STATE LINE
 - INCORPORATED CITY OR VILLAGE (GENERALIZED)
 - FREE OR TOLL FERRY
 - CANAL
 - NARROW STREAM
 - WIDE STREAM
 - DAM WITH LOCK
 - DAM
 - RESERVOIR/POND/LAKE
 - COUNTY SEAT
 - SCHOOL
 - COLLEGE OR UNIVERSITY
 - HOSPITAL
 - CHURCH WITH CEMETERY
 - CEMETERY
 - PATROL STATION
 - CORRECTIONAL OR PENAL INSTL.
 - HIGHWAY GARAGE OR MAINT. YARD
 - HIGHWAY DIV. OR DIST. OFFICE
 - WEIGHT STATION
 - MONUMENT-SMALL HISTORICAL SITE
 - LIGHTHOUSE
 - MOUNTAIN PEAK
 - REST AREA
 - TRANSPORTATION STATION
 - COAST GUARD STATION
 - MILITARY AIRFIELD
 - COMMERCIAL OR MUNICIPAL FIELD
 - HANGAR ON FIELD
 - LANDING STRIP
 - MARKED AUXILIARY FIELD



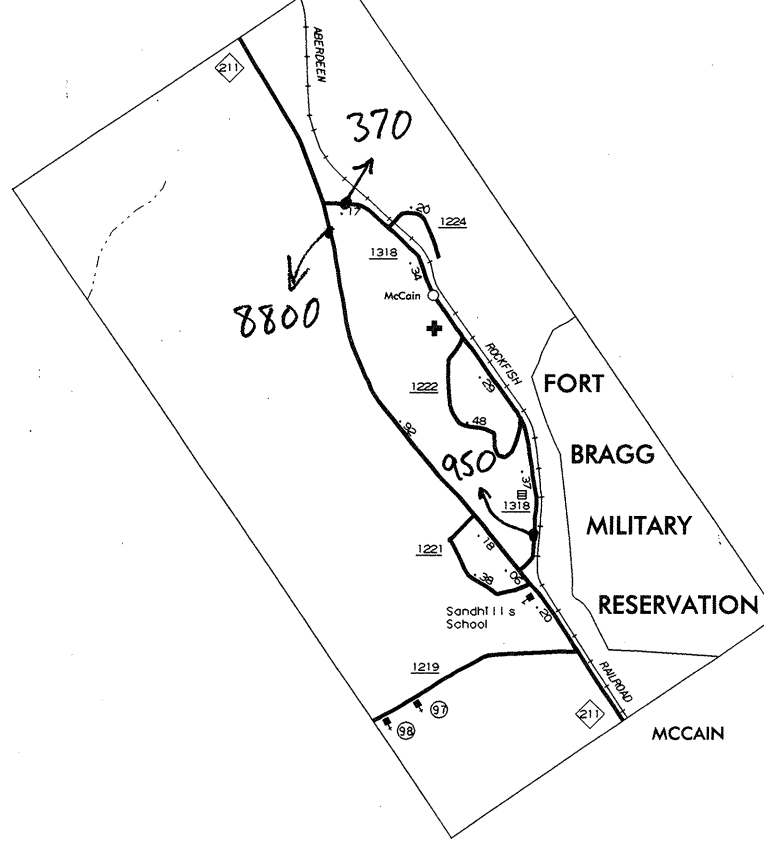
RAEFORD POP. 4,100



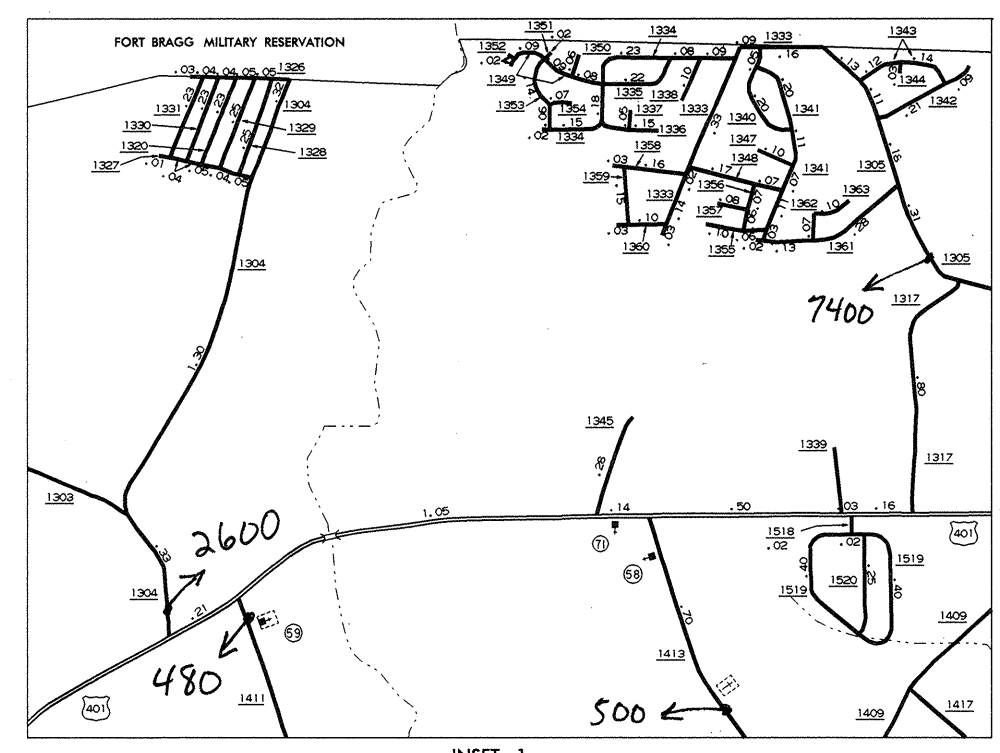
DUNDARRACH



ROCKFISH



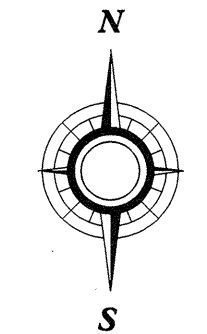
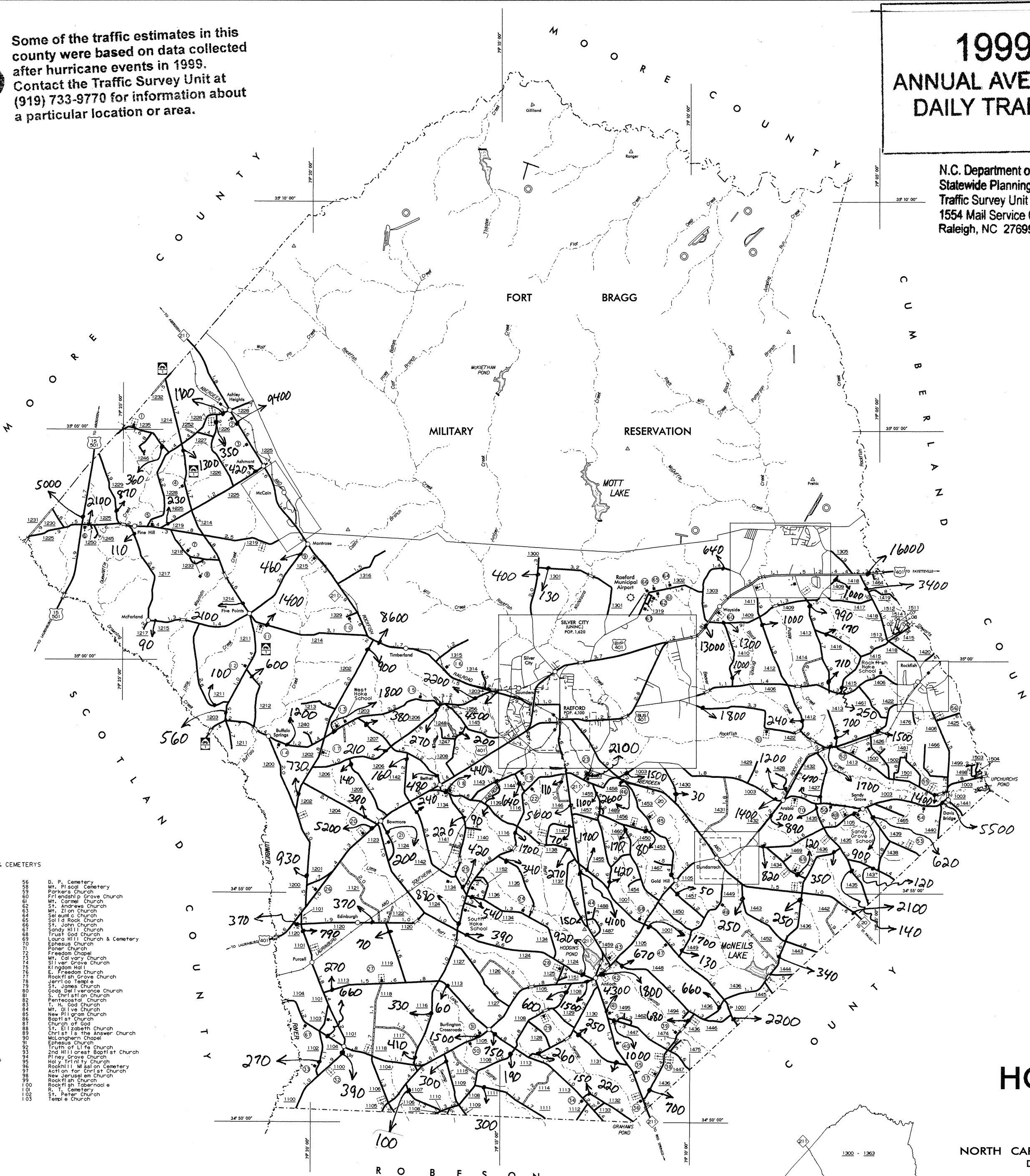
MCCAIN



INSET 1

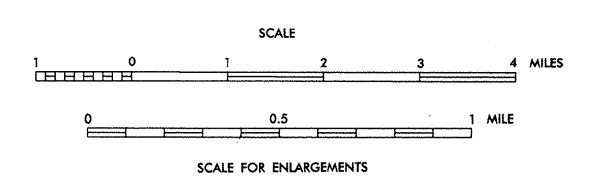
KEY TO CHURCHES & CEMETERIES

Liberty Church	66	D. P. Cemetery	103
Asbury United Church	67	McLendon Cemetery	104
Methodist Episcopal Church	68	McLendon Cemetery	105
First Baptist Church	69	McLendon Cemetery	106
First Baptist Church	70	McLendon Cemetery	107
First Baptist Church	71	McLendon Cemetery	108
First Baptist Church	72	McLendon Cemetery	109
First Baptist Church	73	McLendon Cemetery	110
First Baptist Church	74	McLendon Cemetery	111
First Baptist Church	75	McLendon Cemetery	112
First Baptist Church	76	McLendon Cemetery	113
First Baptist Church	77	McLendon Cemetery	114
First Baptist Church	78	McLendon Cemetery	115
First Baptist Church	79	McLendon Cemetery	116
First Baptist Church	80	McLendon Cemetery	117
First Baptist Church	81	McLendon Cemetery	118
First Baptist Church	82	McLendon Cemetery	119
First Baptist Church	83	McLendon Cemetery	120
First Baptist Church	84	McLendon Cemetery	121
First Baptist Church	85	McLendon Cemetery	122
First Baptist Church	86	McLendon Cemetery	123
First Baptist Church	87	McLendon Cemetery	124
First Baptist Church	88	McLendon Cemetery	125
First Baptist Church	89	McLendon Cemetery	126
First Baptist Church	90	McLendon Cemetery	127
First Baptist Church	91	McLendon Cemetery	128
First Baptist Church	92	McLendon Cemetery	129
First Baptist Church	93	McLendon Cemetery	130
First Baptist Church	94	McLendon Cemetery	131
First Baptist Church	95	McLendon Cemetery	132
First Baptist Church	96	McLendon Cemetery	133
First Baptist Church	97	McLendon Cemetery	134
First Baptist Church	98	McLendon Cemetery	135
First Baptist Church	99	McLendon Cemetery	136
First Baptist Church	100	McLendon Cemetery	137
First Baptist Church	101	McLendon Cemetery	138
First Baptist Church	102	McLendon Cemetery	139
First Baptist Church	103	McLendon Cemetery	140



HOKE COUNTY NORTH CAROLINA

PREPARED BY THE
NORTH CAROLINA DEPARTMENT OF TRANSPORTATION
DIVISION OF HIGHWAYS - GIS UNIT
IN COOPERATION WITH THE
U.S. DEPARTMENT OF TRANSPORTATION
FEDERAL HIGHWAY ADMINISTRATION



NOTE: MAP INCLUDES ONLY STATE MAINTAINED ROADS OR IMPORTANT NON-SYSTEM ROADS. ROADS SHOWN AS OF MAR 31, 1999.

KEY TO COUNTY ROAD NUMBERS ALSO NUMBERED 1000, 1000

10000 FOOT GRID BASED ON NORTH CAROLINA PLANE COORDINATE SYSTEM

REVISIONS
JUL 1-1-94
DOK
1-13-98
8-6-98
EX. 111-99
LMO, 5/31/99