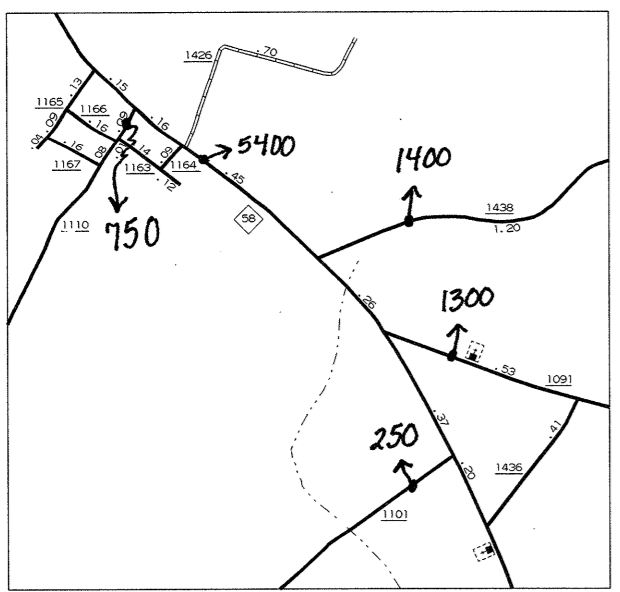
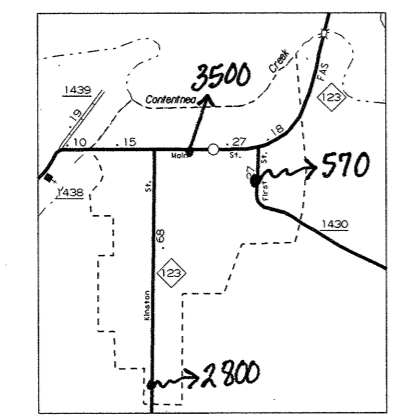


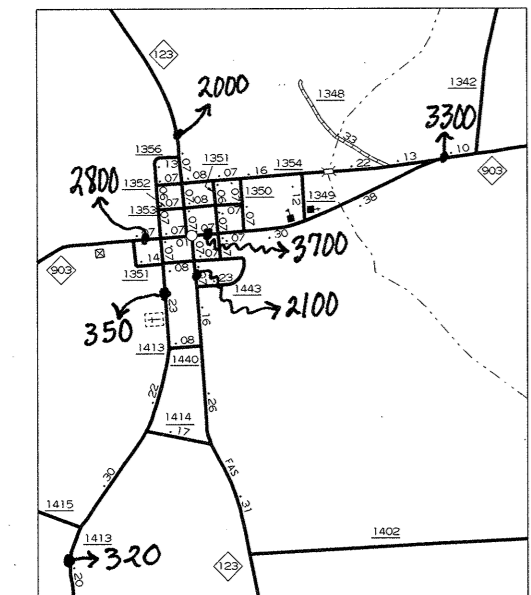
COPIES OF THIS MAP ARE AVAILABLE FROM THE PUBLIC AT A NOMINAL COST. GREEN COUNTY, NORTH CAROLINA. PREPARED BY THE N.C. DEPARTMENT OF TRANSPORTATION, TRAFFIC SURVEY UNIT, RALEIGH, NORTH CAROLINA, 27611.



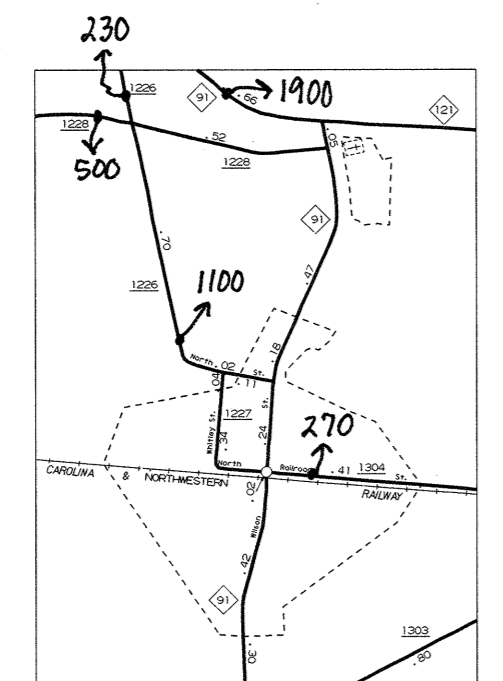
INSET 1



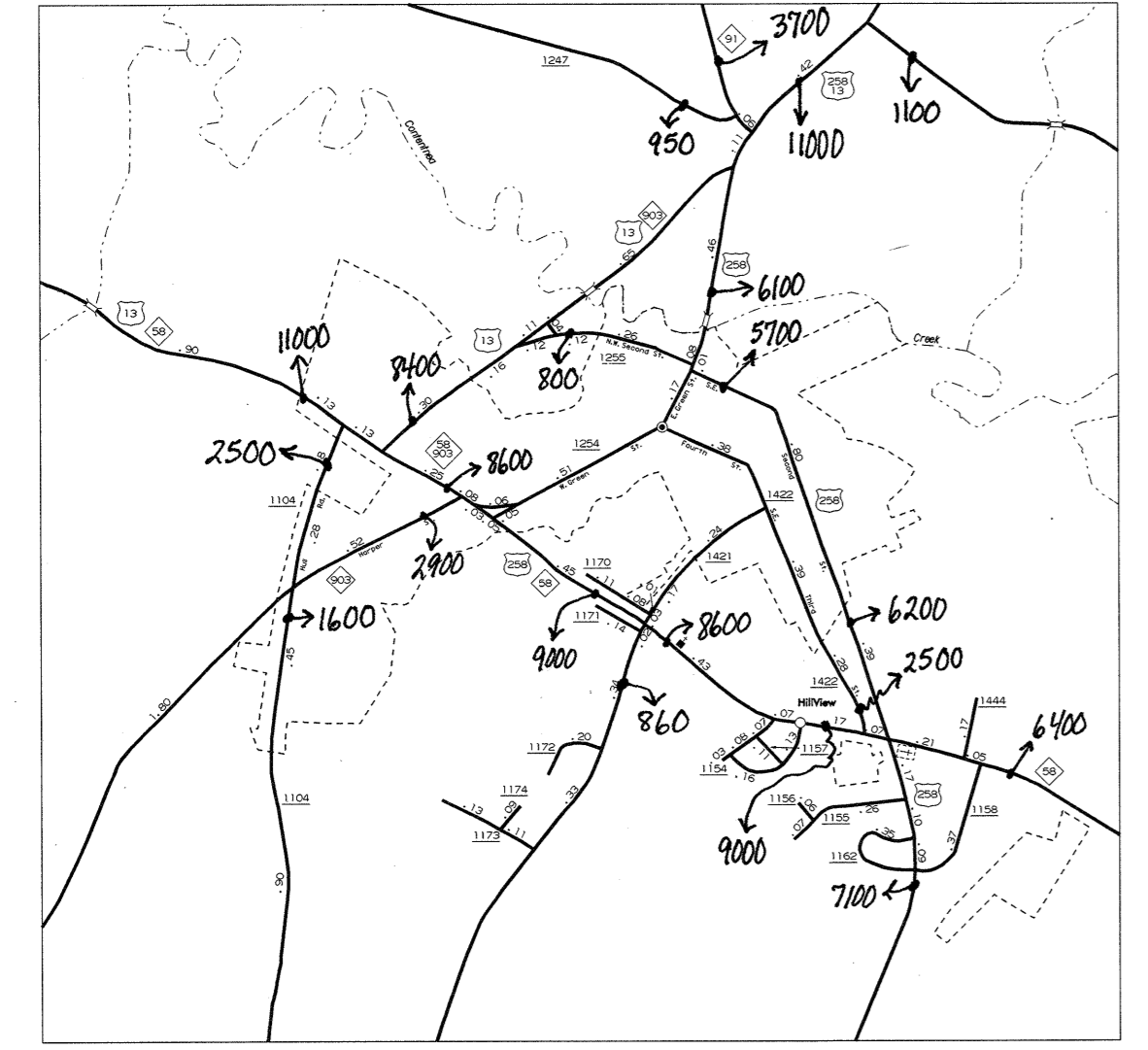
HOOKERTON  
POP. 425



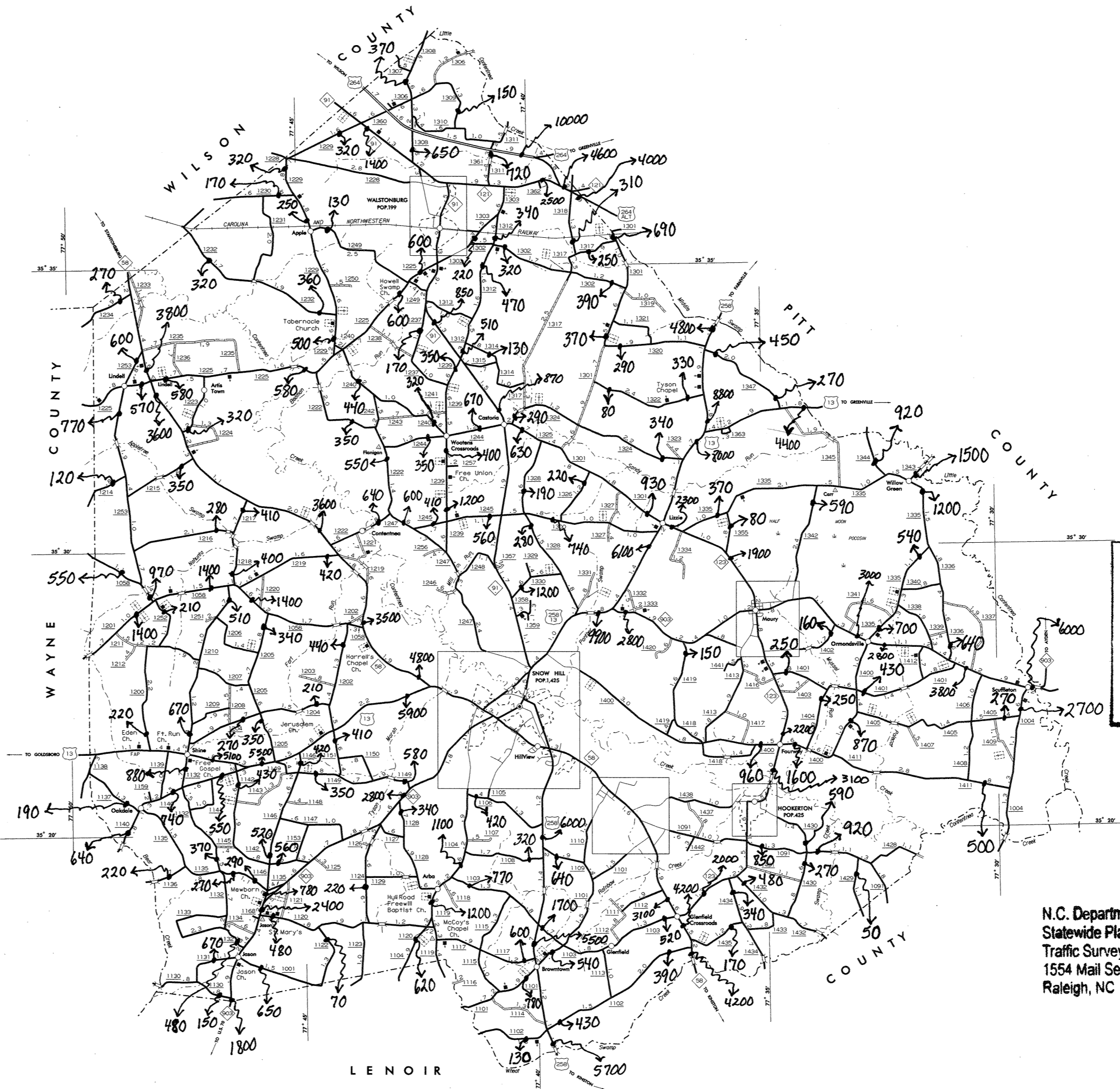
MAURY



WALSTONBURG  
POP. 199

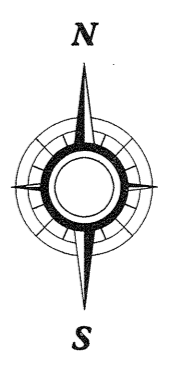


SNOW HILL  
POP. 1,425



**1999  
ANNUAL AVERAGE  
DAILY TRAFFIC**

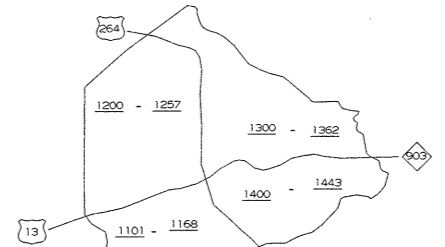
N.C. Department of Transportation  
Statewide Planning Branch  
Traffic Survey Unit  
1554 Mail Service Center  
Raleigh, NC 27699-1554



**GREENE COUNTY**  
NORTH CAROLINA

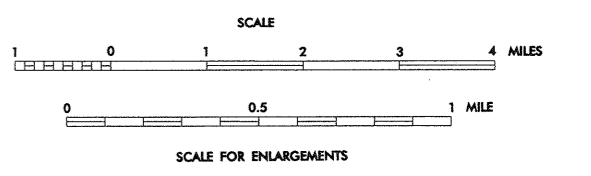
PREPARED BY THE  
NORTH CAROLINA DEPARTMENT OF TRANSPORTATION  
DIVISION OF HIGHWAYS - GIS UNIT  
IN COOPERATION WITH THE  
UNITED STATES DEPARTMENT OF TRANSPORTATION  
FEDERAL HIGHWAY ADMINISTRATION

Some of the traffic estimates in this county were based on data collected after hurricane events in 1999. Contact the Traffic Survey Unit at (919) 733-9770 for information about a particular location or area.



KEY TO COUNTY ROAD NUMBERS  
ALSO NUMBERS: 1000, 1005, 1008, 1009

NOTE: MAP INCLUDES ONLY STATE MAINTAINED ROADS OR IMPORTANT NON-SYSTEM ROADS. MILEAGE NOT SHOWN ON FRONTAGE ROADS. ROADS SHOWN AS OF DEC. 31, 1994.



SCALE FOR ENLARGEMENTS  
10,000 FOOT GRID BASED ON NORTH CAROLINA PLANE COORDINATE SYSTEM  
POLYCONIC PROJECTION