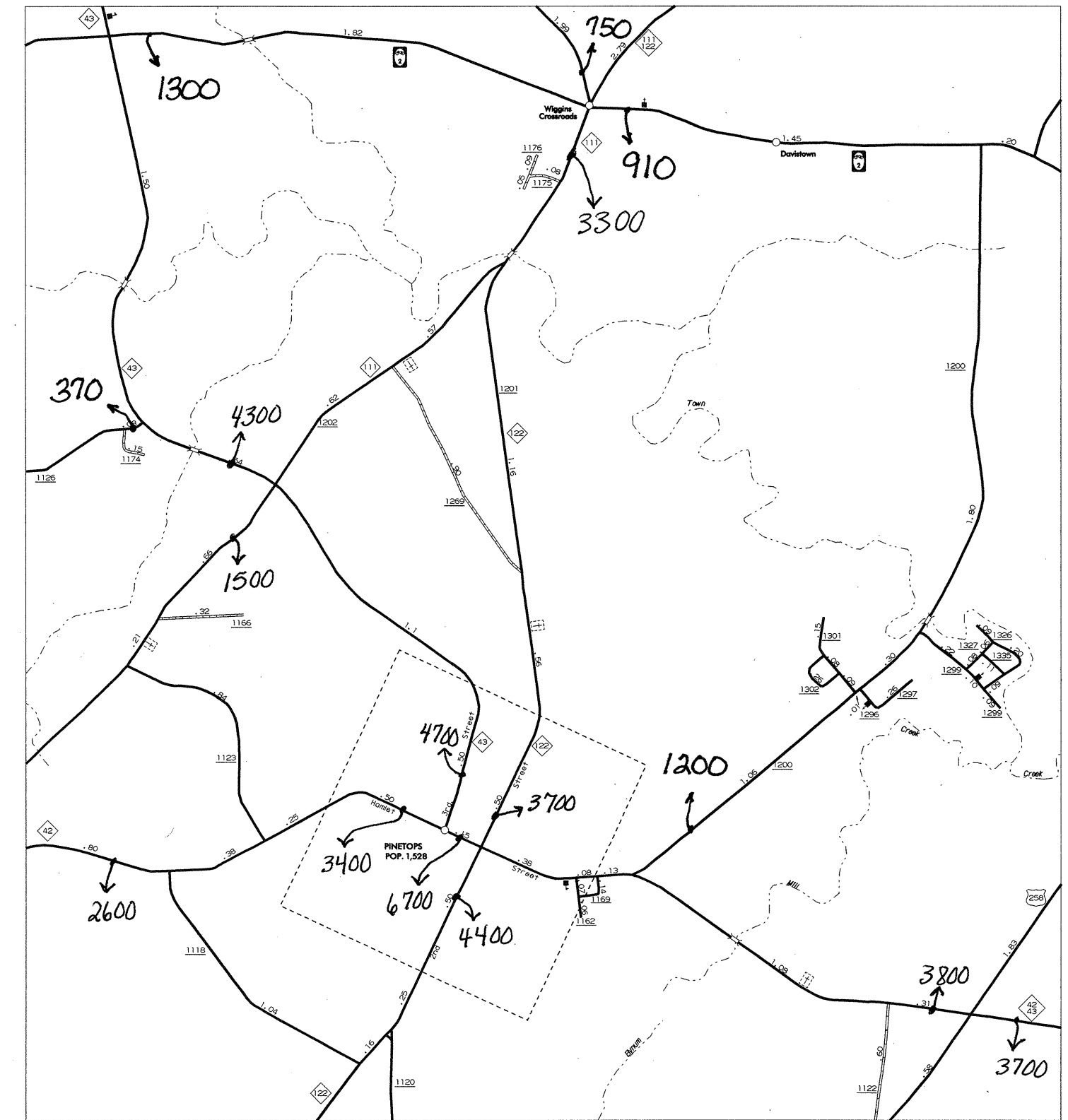
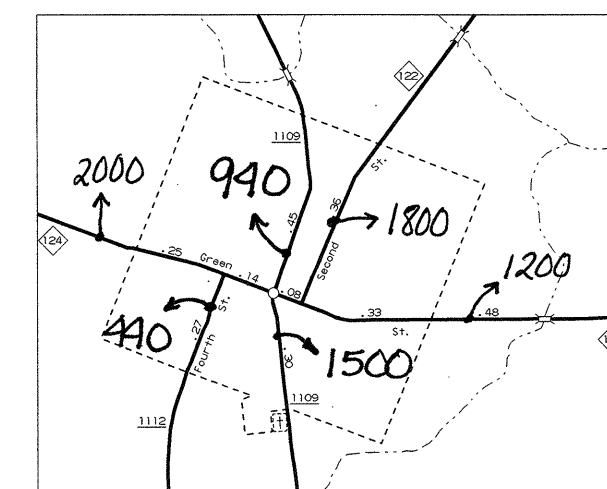


TARBORO AND PRINCEVILLE

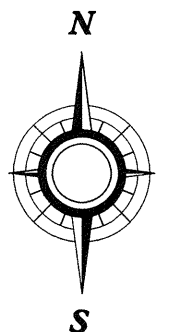


PINETOPS
POP. 1,528



MACEFIELD
POP. 497

N.C. Department of Transportation
Statewide Planning Branch
Traffic Survey Unit
1554 Mail Service Center
Raleigh, NC 27699-1554



ENLARGED MUNICIPAL AND SUBURBAN AREAS

EDGECOMBE COUNTY

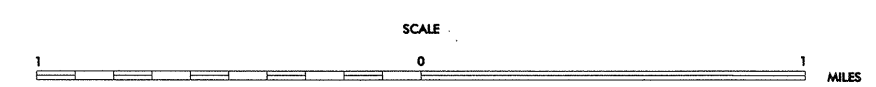
NORTH CAROLINA

PREPARED BY THE
NORTH CAROLINA DEPARTMENT OF TRANSPORTATION
DIVISION OF HIGHWAYS - GIS UNIT

IN COOPERATION WITH THE
U.S. DEPARTMENT OF TRANSPORTATION
FEDERAL HIGHWAY ADMINISTRATION

**1999
ANNUAL AVERAGE
DAILY TRAFFIC**

Some of the traffic estimates in this county were based on data collected after hurricane events in 1999. Contact the Traffic Survey Unit at (919) 733-9770 for information about a particular location or area.



SCALE
0 1 MILES
10,000 FOOT GRID BASED ON NORTH CAROLINA PLANE COORDINATE SYSTEM

COPIES OF THIS MAP ARE AVAILABLE TO THE PUBLIC AT A NOMINAL COST. ADDRESS: N.C. DEPARTMENT OF TRANSPORTATION, DIVISION OF HIGHWAYS, RALEIGH, NORTH CAROLINA 27611

REVISED 8-31-94 608