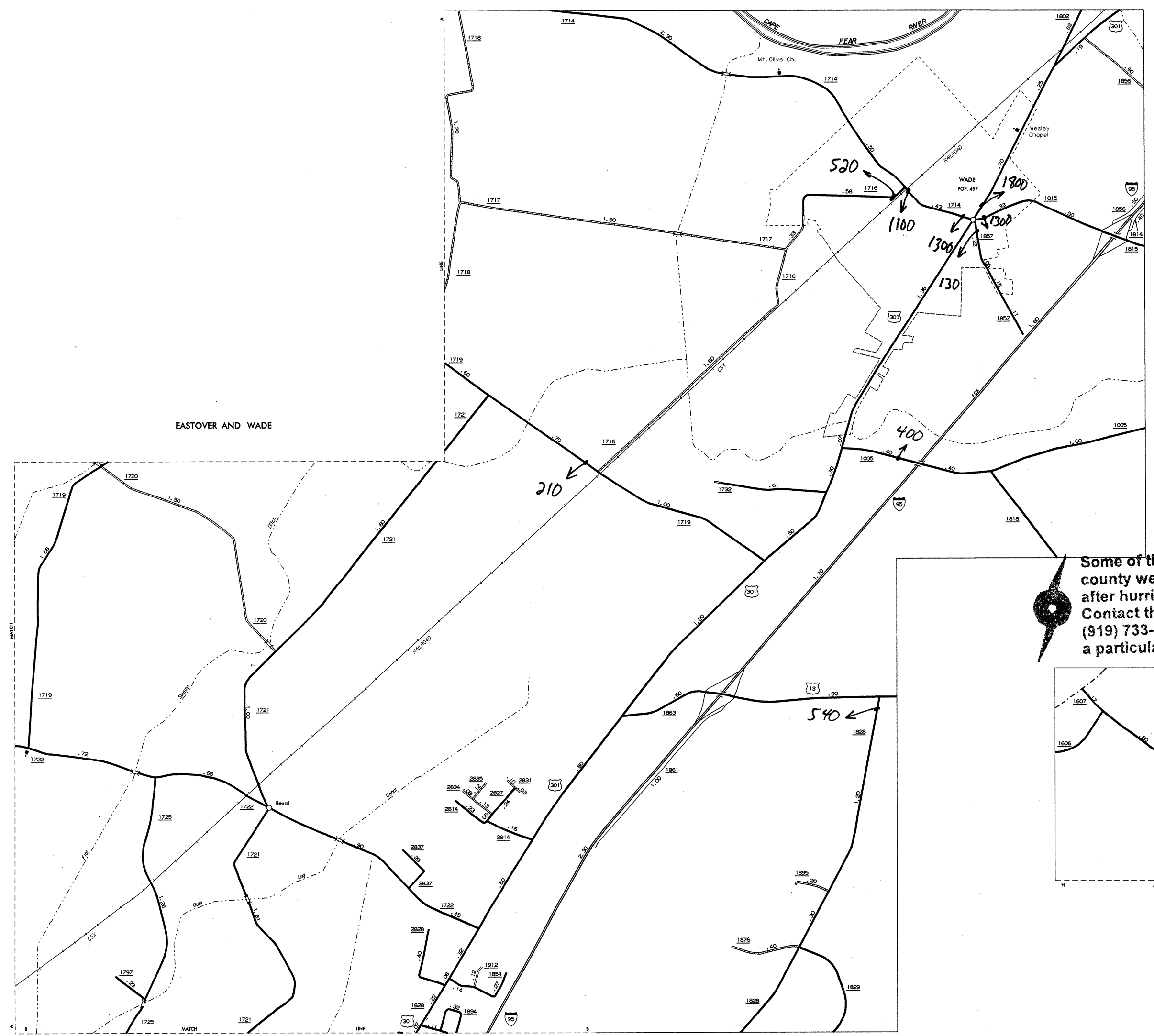
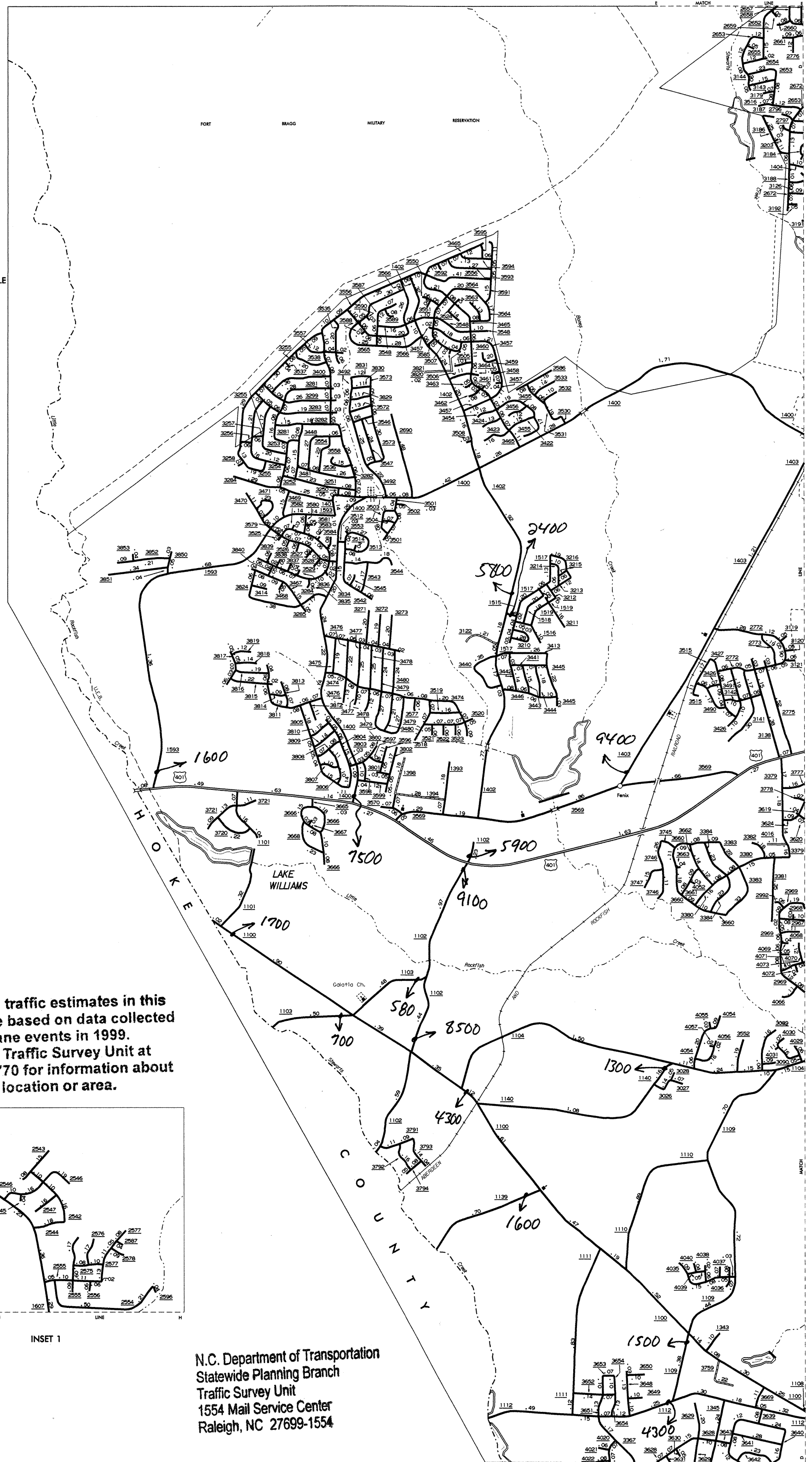


CUMBERLAND - SHEET 4
 COPIES OF THIS MAP ARE AVAILABLE
 FROM THE NORTH CAROLINA DEPARTMENT OF TRANSPORTATION
 ADDRESS: STATE DEPARTMENT OF TRANSPORTATION
 DIVISION OF HIGHWAYS - GIS UNIT
 RALEIGH, NORTH CAROLINA 27611

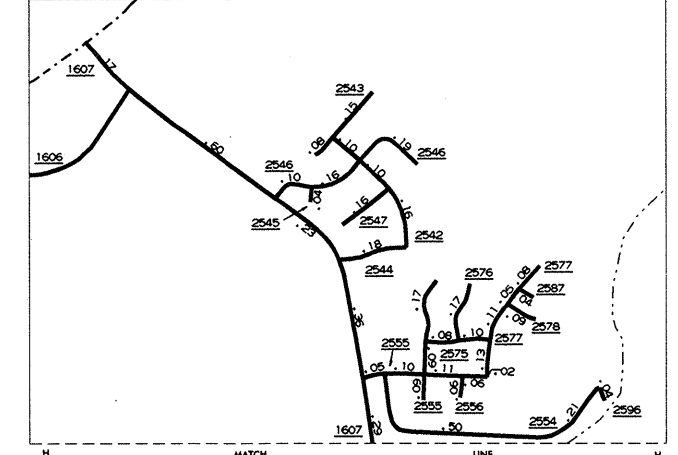
REVISED
 DATE: 04/98
 BY: 32298
 BY: 33999
 BY: 82199



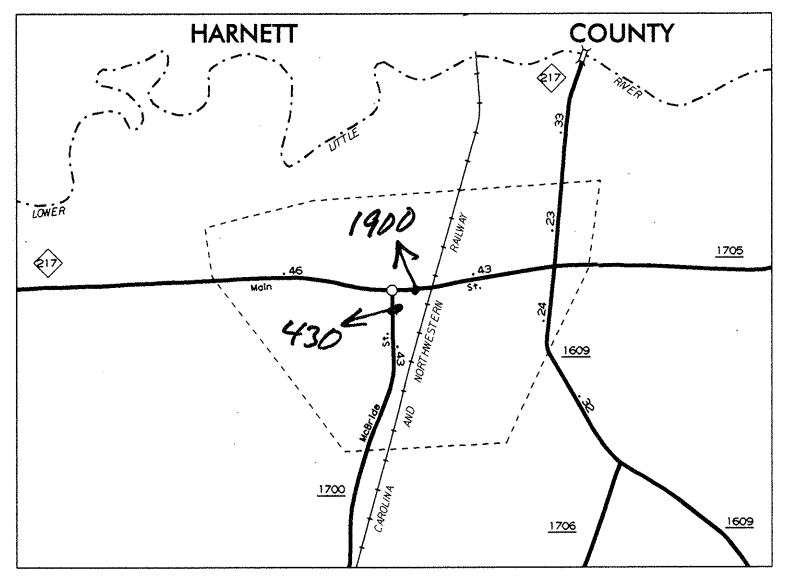
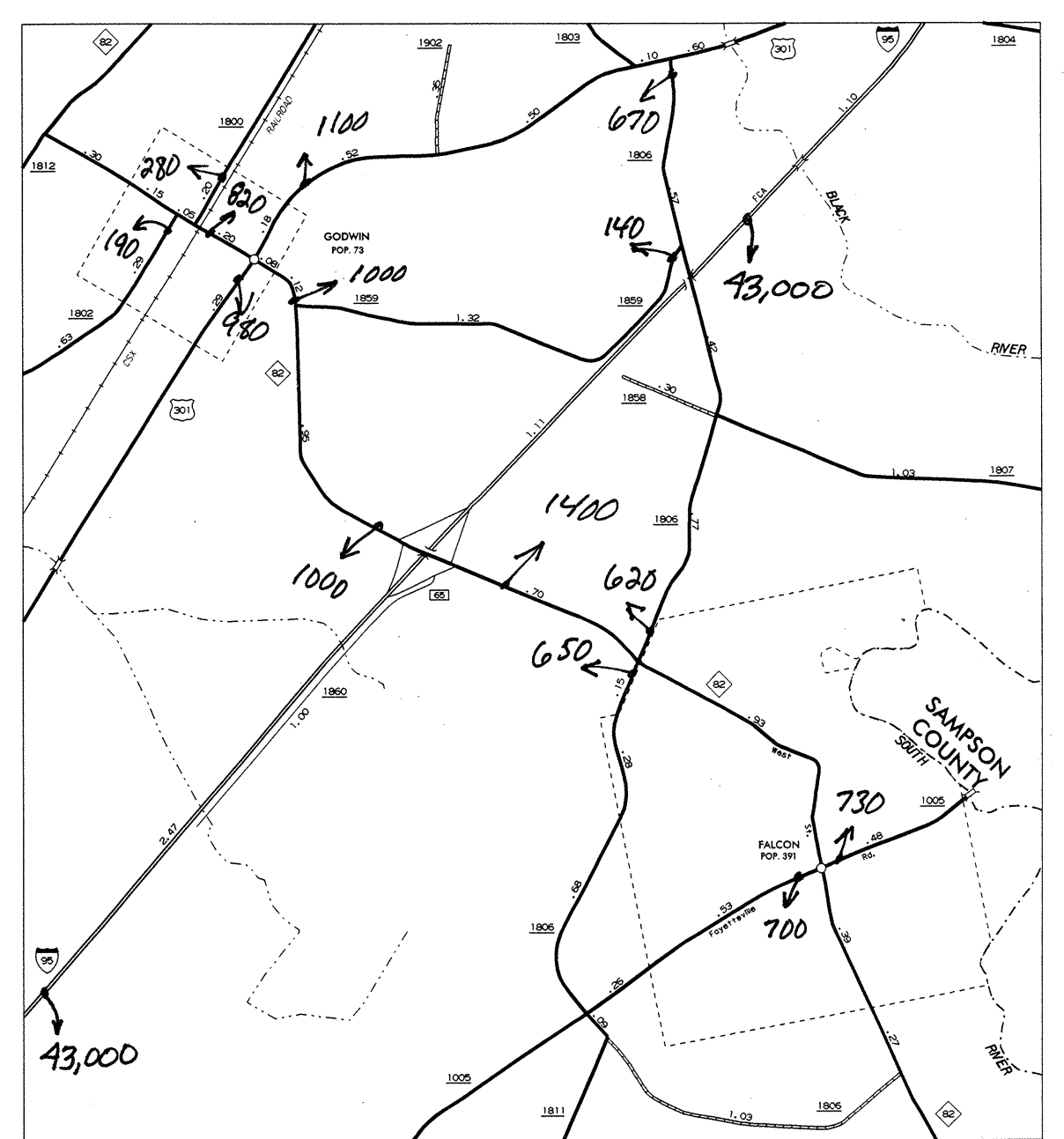
WEST FAYETTEVILLE



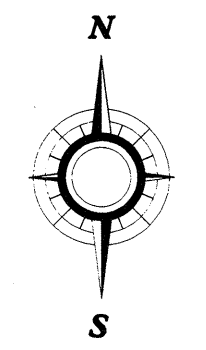
Some of the traffic estimates in this county were based on data collected after hurricane events in 1999. Contact the Traffic Survey Unit at (919) 733-9770 for information about a particular location or area.



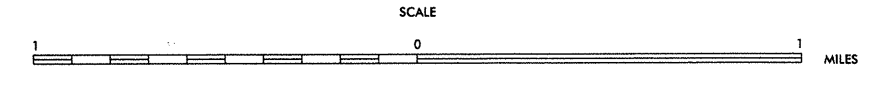
N.C. Department of Transportation
 Statewide Planning Branch
 Traffic Survey Unit
 1554 Mail Service Center
 Raleigh, NC 27699-1554



**1999
 ANNUAL AVERAGE
 DAILY TRAFFIC**



ENLARGED MUNICIPAL AND SUBURBAN AREAS
CUMBERLAND COUNTY
 NORTH CAROLINA
 PREPARED BY THE
 NORTH CAROLINA DEPARTMENT OF TRANSPORTATION
 DIVISION OF HIGHWAYS - GIS UNIT
 IN COOPERATION WITH THE
 U.S. DEPARTMENT OF TRANSPORTATION
 FEDERAL HIGHWAY ADMINISTRATION



10,000 FOOT GRID BASED ON NORTH CAROLINA PLANE COORDINATE SYSTEM