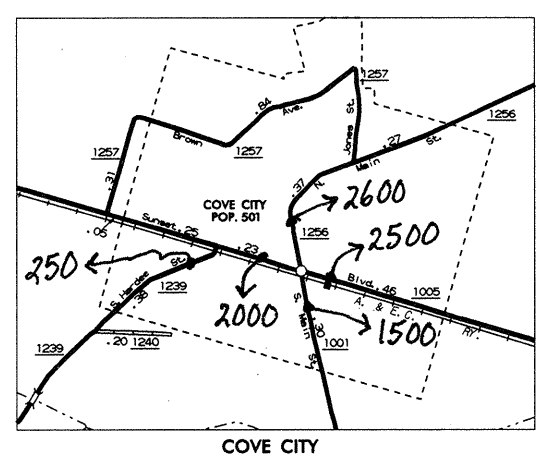
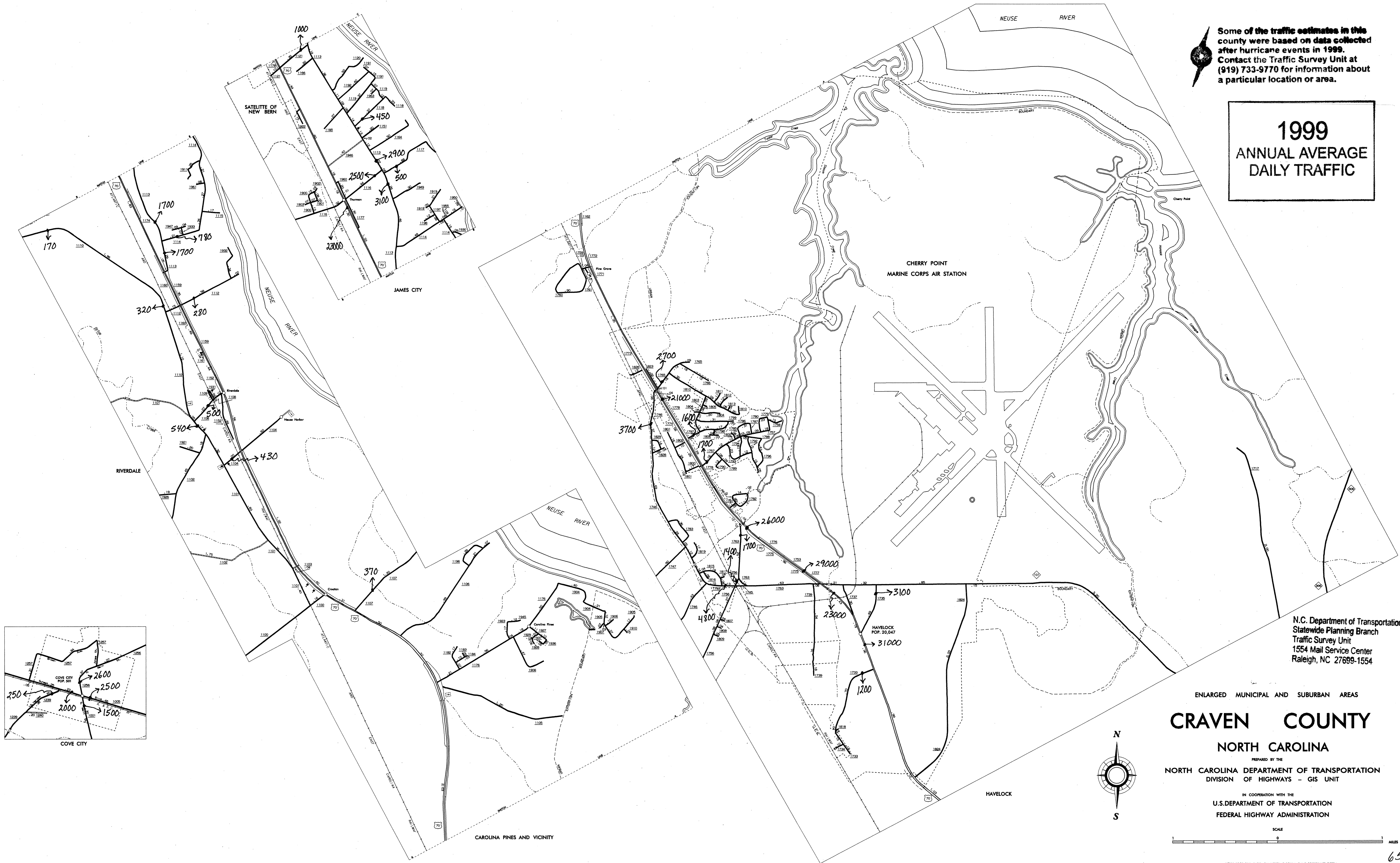


Some of the traffic estimates in this county were based on data collected after hurricane events in 1999. Contact the Traffic Survey Unit at (919) 733-9770 for information about a particular location or area.

**1999
ANNUAL AVERAGE
DAILY TRAFFIC**

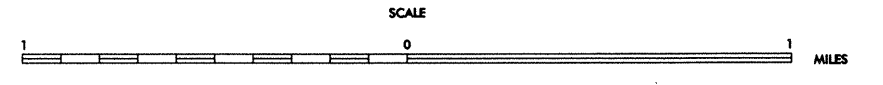
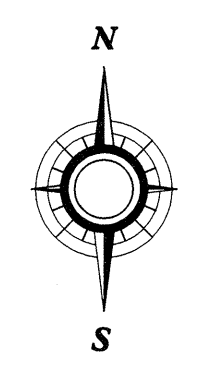


N.C. Department of Transportation
Statewide Planning Branch
Traffic Survey Unit
1554 Mail Service Center
Raleigh, NC 27699-1554

ENLARGED MUNICIPAL AND SUBURBAN AREAS
CRAVEN COUNTY
NORTH CAROLINA

PREPARED BY THE
NORTH CAROLINA DEPARTMENT OF TRANSPORTATION
DIVISION OF HIGHWAYS - GIS UNIT

IN COOPERATION WITH THE
U.S. DEPARTMENT OF TRANSPORTATION
FEDERAL HIGHWAY ADMINISTRATION



10,000 FOOT GRID BASED ON NORTH CAROLINA PLANE COORDINATE SYSTEM
POLYLINE PROJECTION