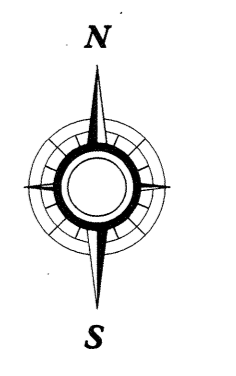
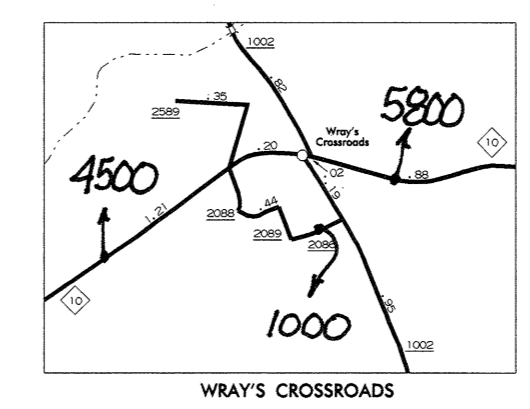


N.C. Department of Transportation
 Statewide Planning Branch
 Traffic Survey Unit
 1554 Mail Service Center
 Raleigh, NC 27699-1554

**1999
 ANNUAL AVERAGE
 DAILY TRAFFIC**

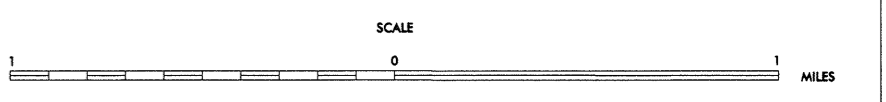


ENLARGED MUNICIPAL AND SUBURBAN AREAS

**CATAWBA COUNTY
 NORTH CAROLINA**

PREPARED BY THE
 NORTH CAROLINA DEPARTMENT OF TRANSPORTATION
 DIVISION OF HIGHWAYS - GIS UNIT

IN COOPERATION WITH THE
 U.S. DEPARTMENT OF TRANSPORTATION
 FEDERAL HIGHWAY ADMINISTRATION



10,000 FOOT GRID BASED ON NORTH CAROLINA PLANE COORDINATE SYSTEM
 PROJECTED POSITION

COPIES OF THIS MAP ARE AVAILABLE
 FROM THE DEPARTMENT OF TRANSPORTATION
 ADDRESS:
 DIVISION OF HIGHWAYS
 RALEIGH, NORTH CAROLINA 27611
 REVISED
 2001