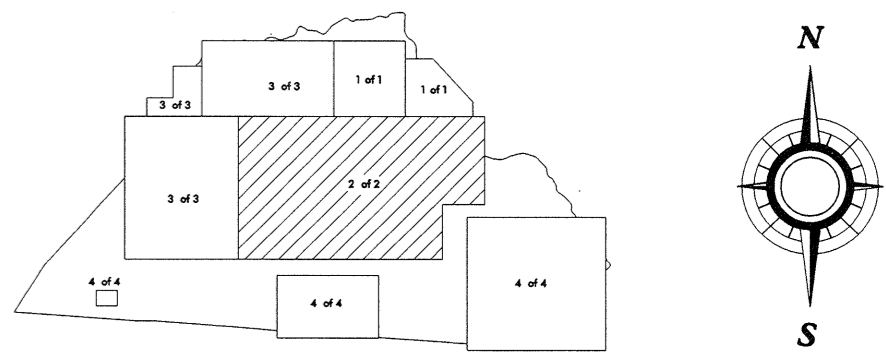


SEE URBAN
MAPPING ALSO

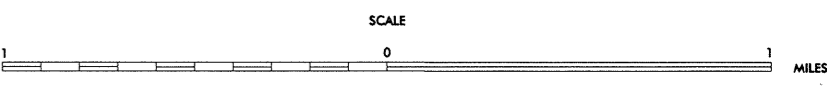
N.C. Department of Transportation
Statewide Planning Branch
Traffic Survey Unit
1554 Mail Service Center
Raleigh, NC 27699-1554

1999
ANNUAL AVERAGE
DAILY TRAFFIC

CONOVER - NEWTON AND VICINITY



ENLARGED MUNICIPAL AND SUBURBAN AREAS
CATAWBA COUNTY
NORTH CAROLINA
PREPARED BY THE
NORTH CAROLINA DEPARTMENT OF TRANSPORTATION
DIVISION OF HIGHWAYS - GIS UNIT
IN COOPERATION WITH THE
U.S. DEPARTMENT OF TRANSPORTATION
FEDERAL HIGHWAY ADMINISTRATION



10,000 FOOT GRID BASED ON NORTH CAROLINA PLANE COORDINATE SYSTEM
PROJECTING HORIZON

CASES OF THIS MAP ARE AVAILABLE
TO THE PUBLIC AT A MINOR COST.
ADDRESS: N.C. DEPARTMENT OF TRANSPORTATION
DIVISION OF HIGHWAYS
RALEIGH, NORTH CAROLINA, 27611

REVISED
BY 1994