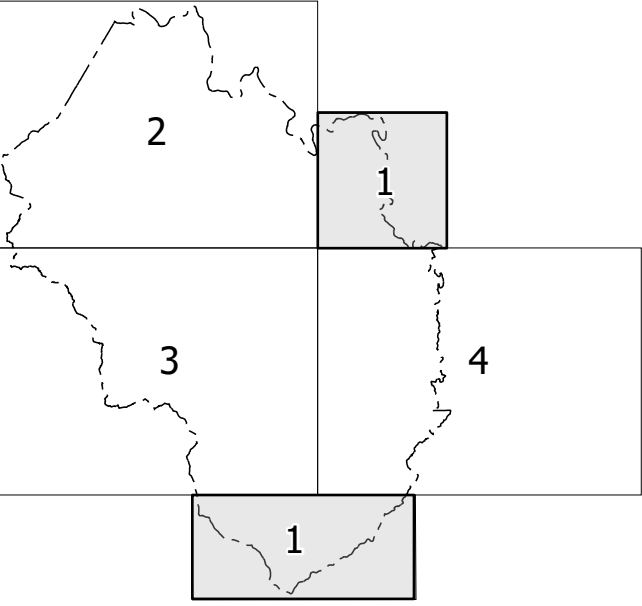


Sheet Key



LEGEND

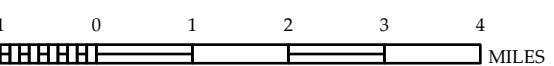
- INTERSTATE US NC
- Divided Hwy
- Undivided Hwy
- BLUE RIDGE PARKWAY
- UNPAVED/RESERVED ROAD
- ROAD SURFACED ROAD
- NON-SYSTEM ROAD
- PROPOSED/DESIGNED ROAD
- PROJECTED LOCATION
- INTERSECTION DISTANCE
- STANDARD ROAD-BRIDGE
- RAILROAD BRIDGE
- DRAW SPAN ON BRIDGE
- PEDESTRIAN BRIDGE
- PEDESTRIAN WALKWAY
- PEDESTRIAN UNDERPASS
- VEHICLE UNDERPASS
- TUNNEL
- CULVERT
- PIPE
- INTERSTATE HIGHWAY
- U.S. NUMBERED HIGHWAY
- N.C. NUMBERED HIGHWAY
- U.S. NUMBERED BICYCLE ROUTE
- S.C. NUMBERED BICYCLE ROUTE
- INTERSTATE INTERCHANGE NUMBER
- SECONDARY ROAD NUMBER
- UTILITY LINE
- RAILROAD LINE
- RAILROAD STATION
- INSET AREA
- STATE LINE
- COUNTY LINE
- SMOOTHED URBAN BOUNDARIES
- CITY LIMITS
- FERRY ROUTE AND RAMP
- NARROW CREEK OR STREAM
- WIDE RIVER OR CREEK
- RESERVOIR, POND OR LAKE W/ ISLAND
- DAM OR DAM WITH LOCK
- NATURAL
- SWAMP
- COMMUNITY
- COUNTY SEAT
- SCHOOL
- HOSPITAL
- COAST GUARD STATION
- CHURCH
- CHURCH WITH CEMETERY
- CEMETERY
- POLICE STATION
- CORRECTION OR PENAL INSTITUTION
- QUARRY
- MINE OR PIT
- HIGHWAY GARAGE OR MAINT. YARD
- HIGHWAY DIV. OR DIST. OFFICE
- MILITARY POST
- WEIGH STATION
- FUEL STATION
- HISTORICAL SITE
- POINTS OF INTEREST
- POST OFFICE
- STATE FOREST
- LIGHTHOUSE
- MOUNTAIN SUMMIT
- OVERLOOK
- MOUNTAIN GAP
- VIEWING OR TRAIL AREA
- BEST AREA
- WELCOME CTR. REST AREA
- WELCOME CTR. REST AREA
- AIRPORT
- MILITARY AIRPORT
- NATIONAL / STATE FOREST BOUNDARY
- WILDLIFE REFUGE
- NATIONAL / STATE PARK BOUNDARY
- GAME LANDS BOUNDARY
- MILITARY RESERVATION BOUNDARY
- INDIAN RESERVATION BOUNDARY



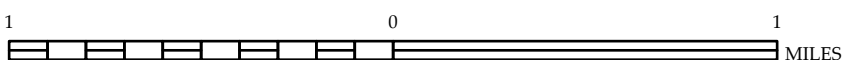
YANCEY COUNTY  
NORTH CAROLINA

PREPARED BY THE  
NORTH CAROLINA DEPARTMENT OF TRANSPORTATION  
OPERATIONS PROGRAM MANAGEMENT UNIT - MAPPING SECTION  
IN COOPERATION WITH THE  
U.S. DEPARTMENT OF TRANSPORTATION  
FEDERAL HIGHWAY ADMINISTRATION

SCALE



SCALE FOR ENLARGEMENTS



COPIES OF THIS MAP ARE AVAILABLE TO THE  
PUBLIC AT NOMINAL COST. CONTACT US TO ORDER:  
mapinfo@ncdot.gov  
https://connect.ncdot.gov/resources/State-Mapping/Pages/Ordering-Maps.aspx  
(819) 834-8480

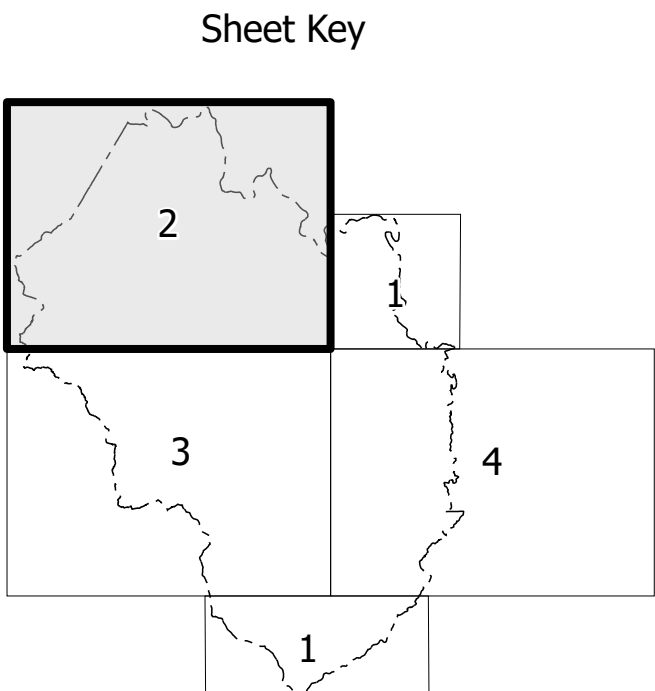
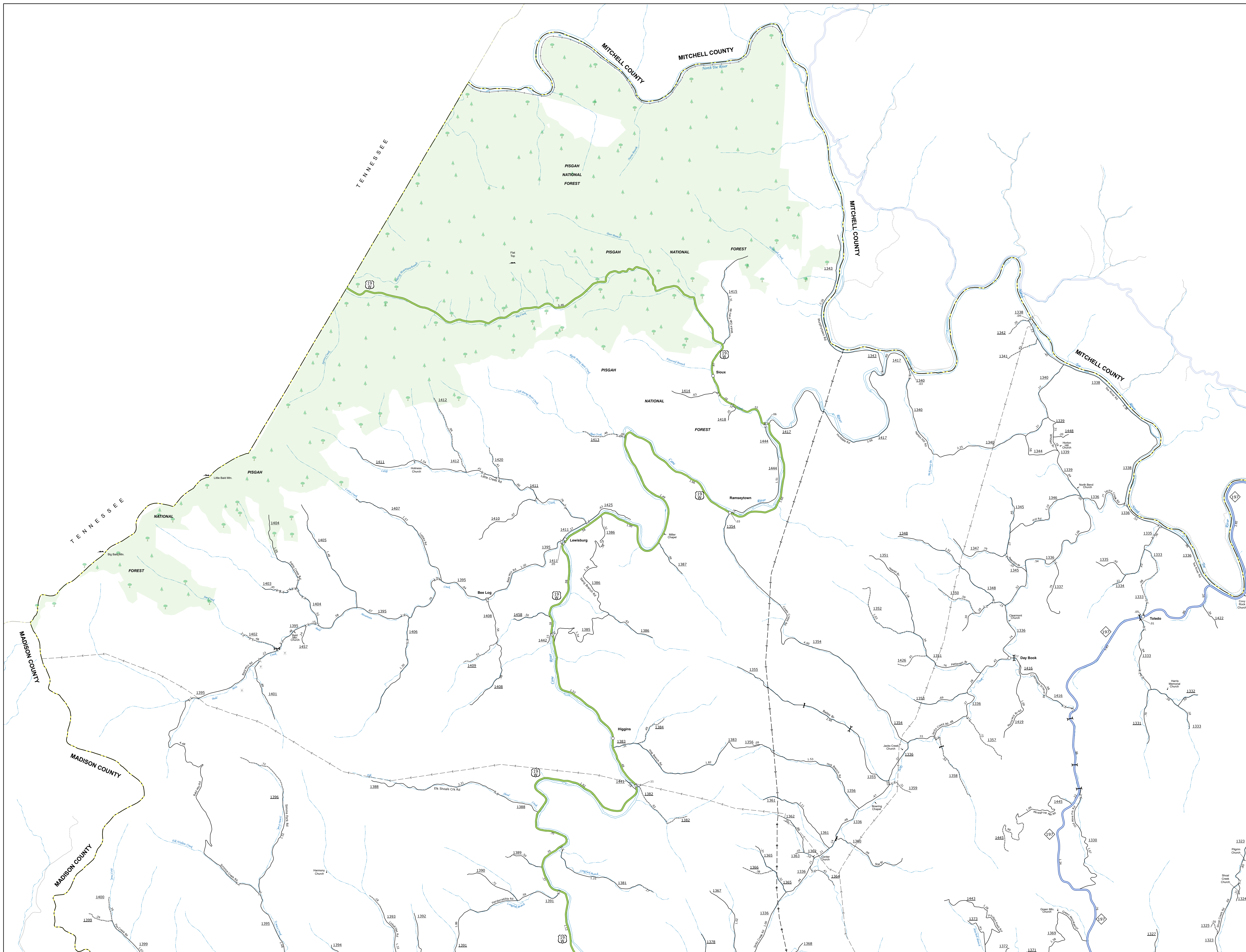
TERMS OF USE: The Mapping Section's goal is to provide the most accurate and current information possible. Map data is compiled from numerous sources with varying dates of publication and map accuracy standards. As a result, the accuracy, currency, and completeness of the data provided will vary. The North Carolina Department of Transportation shall not be held liable for any errors in the map data. This map cannot be construed to be a legal document. The information shown on this map was last updated in May 2025. For digital copies of this map or additional map products, visit <https://connect.ncdot.gov/resources/State-Mapping>

NORTH CAROLINA PLANE COORDINATE SYSTEM  
LAMBERT CONFORMAL CONIC PROJECTION

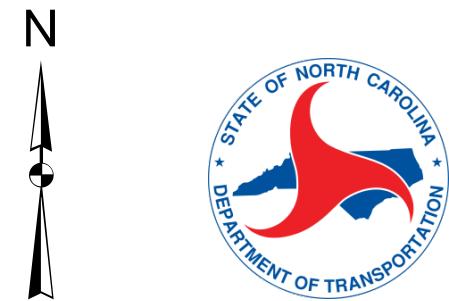


TERMS OF USE: This Mapping Section's goal is to provide the most accurate and current information possible. Map data is compiled from various sources, including aerial photography, ground surveys, and other reliable sources. The North Carolina Department of Transportation does not warrant the accuracy of the data provided at any time. The North Carolina Department of Transportation does not assume any liability for any errors in the map data. This map is for informational purposes only and should not be used for navigation or other critical decisions. For original copies of this map or additional map products, visit <http://www.ncdot.com>.

COPIES OF THIS MAP ARE AVAILABLE TO THE PUBLIC AT THE NORTH CAROLINA DEPARTMENT OF TRANSPORTATION, 100 SOUTH PARKWAY, RALEIGH, NC 27601. (919) 334-4400.

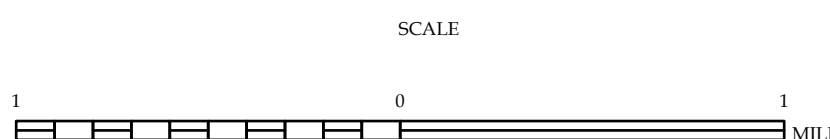


- LEGEND**
- INTERSTATE US NC Divided Hwy Undivided Hwy
  - BLUE BRIDGE PARKWAY
  - UNPAVED SURFACED ROAD
  - HARD SURFACED ROAD
  - NOV-ESTER ROAD
  - PROVISIONALLY DRAWS ROAD
  - PROJECTED LOCATION
  - INTERSECTION DISTANCE
  - STANDARD ROAD BRIDGE
  - RAILROAD BRIDGE
  - DRAW SPAN ON BRIDGE
  - PEDESTRIAN BRIDGE
  - PEDESTRIAN WALKWAY
  - PEDESTRIAN UNDERPASS
  - VEHICULAR UNDERPASS
  - TUNNEL
  - CULVERT
  - PIPE
  - INTERSTATE HIGHWAY
  - U.S. NUMBERED HIGHWAY
  - N.C. NUMBERED HIGHWAY
  - U.S. NUMBERED BICYCLE ROUTE
  - N.C. NUMBERED BICYCLE ROUTE
  - INTERSTATE INTERCHANGE NUMBER
  - SECONDARY ROAD NUMBER
  - UTILITY LINE
  - RAILROAD LINE
  - RAILROAD STATION
  - INSURANCE
  - STATE LINE
  - COUNTY LINE
  - CITY LIMITS
  - SMOOTHED URBAN BOUNDARIES
  - FERRY ROUTE AND KAMP
  - NARROW CREEK OR STREAM
  - WIDE RIVER OR CREEK
  - RESERVOIR, POND OR LAKE W/ ISLAND
  - DAM OR DAM WITH LOCK
  - WATERFALL
  - SWAMP
  - COUNTY SEAT
  - SCHOOL
  - COLLEGE OR UNIVERSITY
  - HOSPITAL
  - COAST GUARD STATION
  - CHURCH
  - CHURCH WITH CEMETERY
  - CEMETERY
  - PATROL STATION
  - CORRECTION OR PENAL INSTITUTION
  - QUARRY
  - MINE OR PIT
  - HOUSING GARAGE OR MANTY YARD
  - HIGHWAY DIV. OR DIST. OFFICE
  - MILITARY POST
  - WATER STATION
  - FARIGROUNDS
  - HISTORICAL SITE
  - POINTS OF INTEREST
  - POST OFFICE
  - STATE FOREST
  - LIGHTHOUSE
  - MOUNTAIN SUMMIT
  - MOUNTAIN GAP
  - OVERLOOK
  - REST AREA
  - VISITOR CTR/REST AREA
  - WELCOME CTR/REST AREA
  - AIRPORT
  - MILITARY AIRPORT
  - NATIONAL STATE FOREST BOUNDARY
  - WILDLIFE REFUGE
  - NATIONAL STATE PARK BOUNDARY
  - GAME LANDS BOUNDARY
  - MILITARY RESERVATION BOUNDARY
  - INDIAN RESERVATION BOUNDARY



## YANCEY COUNTY NORTH CAROLINA

PREPARED BY THE  
NORTH CAROLINA DEPARTMENT OF TRANSPORTATION  
OPERATIONS PROGRAM MANAGEMENT UNIT - MAPPING SECTION  
IN COOPERATION WITH THE  
U.S. DEPARTMENT OF TRANSPORTATION  
FEDERAL HIGHWAY ADMINISTRATION

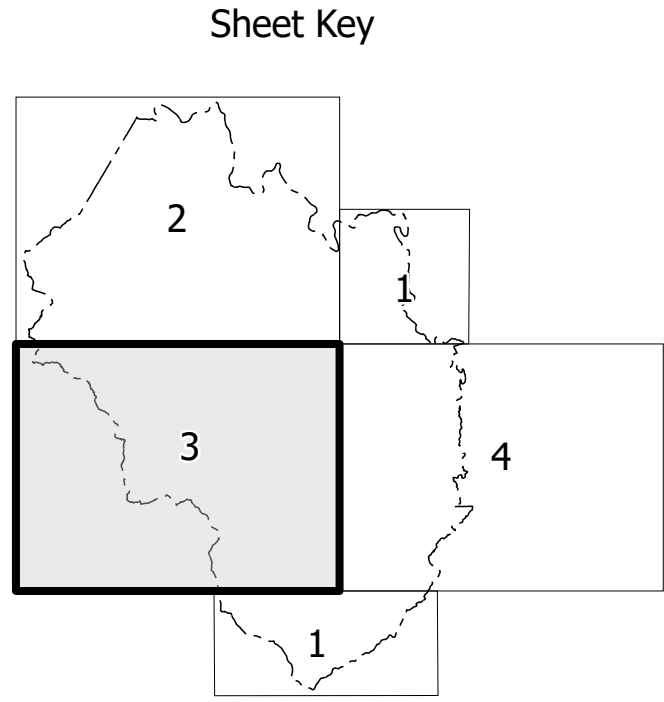
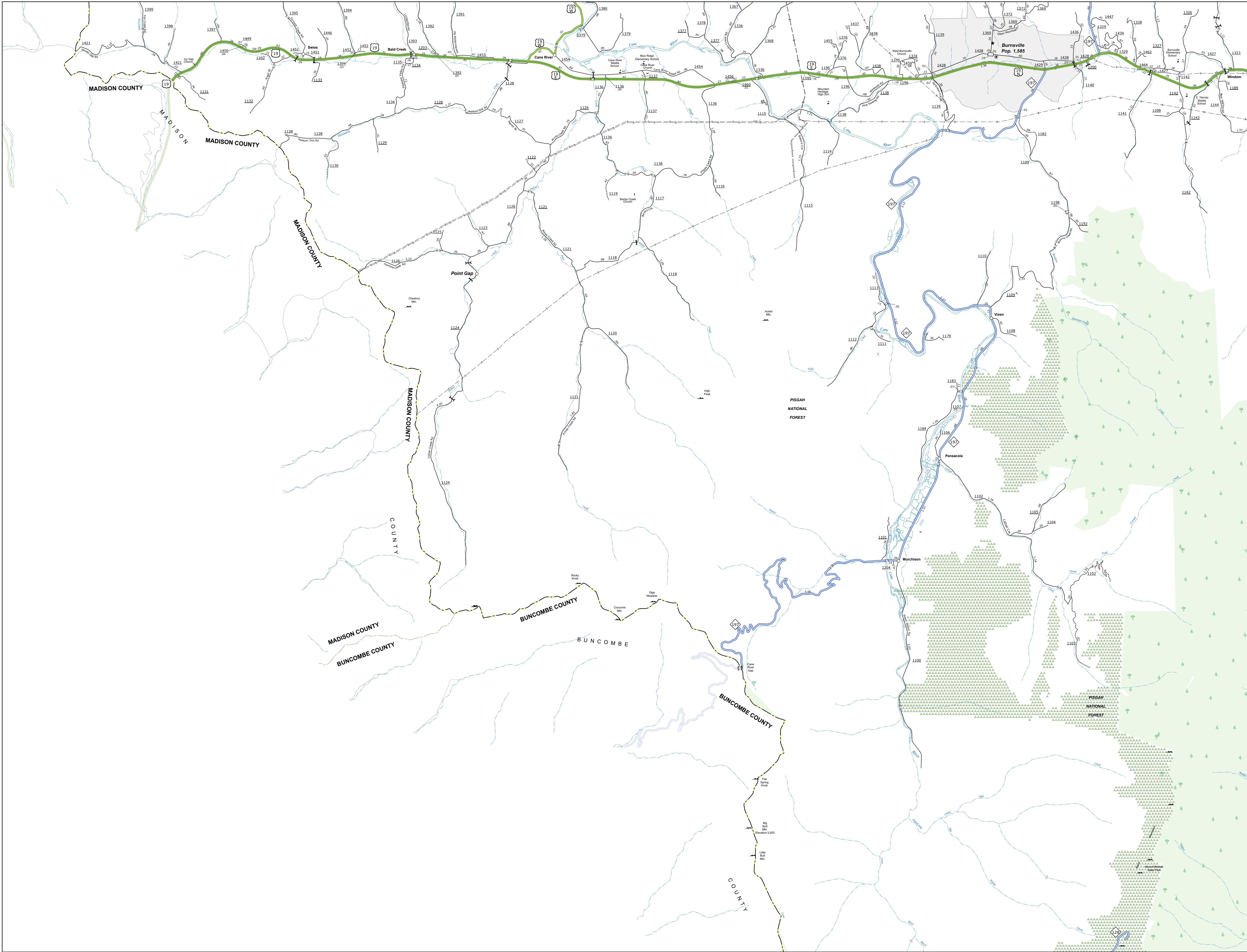


NORTH CAROLINA PLANE COORDINATE SYSTEM  
LAMBERT CONFORMAL CONIC PROJECTION



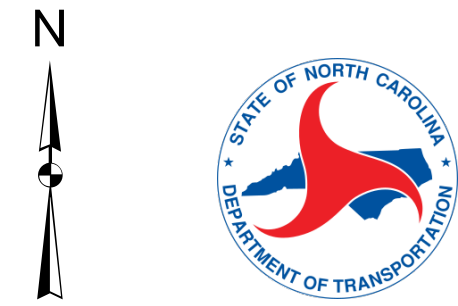
TERMS OF USE: This Mapping Section's goal is to provide the most accurate and current information possible. Map data is compiled from various sources, including aerial photography, ground surveys, and other reliable sources. The North Carolina Department of Transportation does not warrant the accuracy of the data provided on this map. The North Carolina Department of Transportation does not assume any liability for any errors in the map data. This map is provided as a reference only. For official copies of this map or additional map products, visit <http://www.ncdot.gov/MapProducts/MapProducts.aspx>.

COPIES OF THIS MAP ARE AVAILABLE TO THE PUBLIC AT THE NORTH CAROLINA DEPARTMENT OF TRANSPORTATION, 1000 EAST 7TH STREET, RALEIGH, NC 27601. (919) 874-4400.



LEGEND

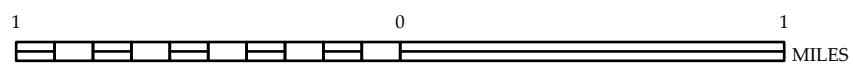
- INTERSTATE US NC Divided Hwy Undivided Hwy
- BLUES BRIDGE PARKWAY
- UNPAVED SURFACED ROAD
- HARD SURFACED ROAD
- NON-EXISTENT ROAD
- PROVISIONALLY DRAWN ROAD
- PROJECTED LOCATION
- INTERSECTION DISTANCE
- STANDARD ROAD BRIDGE
- RAILROAD BRIDGE
- DRAW SPAN ON BRIDGE
- PEDESTRIAN BRIDGE
- PEDESTRIAN WALKWAY
- PEDESTRIAN UNDERPASS
- VEHICULAR UNDERPASS
- TUNNEL
- CULVERT
- PIKE
- INTERSTATE HIGHWAY
- U.S. NUMBERED HIGHWAY
- N.C. NUMBERED HIGHWAY
- U.S. NUMBERED BI-CYCLE ROUTE
- N.C. NUMBERED BI-CYCLE ROUTE
- INTERSTATE INTERCHANGE NUMBER
- SECONDARY ROAD NUMBER
- UTILITY LINE
- RAILROAD LINE
- RAILROAD STATION
- INSURANCE AREA
- STATE LINE
- COUNTY LINE
- SMOOTHED URBAN BOUNDARIES
- CITY LIMITS
- FERRY ROUTE AND RAMP
- NARROW CREEK OR STREAM
- WIDE RIVER OR CREEK
- RESERVOIR, POND OR LAKE W/ ISLAND
- DAM OR DAM WITH LOCK
- WATERFALL
- SWAMP
- COMMUNITY
- COUNTY SEAT
- SCHOOL
- COLLEGE OR UNIVERSITY
- HOSPITAL
- COAST GUARD STATION
- CHURCH
- CHURCH WITH CEMETERY
- CEMETERY
- PATROL STATION
- CORRECTION OR PENAL INSTITUTION
- QUARRY
- MINE OR PIT
- HOUSING GARAGE OR MAINT. YARD
- HIGHWAY DIV. OR DIST. OFFICE
- MILITARY POST
- WEIGH STATION
- FARMS
- HISTORICAL SITE
- POINTS OF INTEREST
- POST OFFICE
- STATE FOREST
- LIGHTHOUSE
- MOUNTAIN SUMMIT
- MOUNTAIN GAP
- OVERLOOK
- BEST AREA
- VISITOR CENTER AREA
- WELCOME CENTER AREA
- AIRPORT
- MILITARY AIRPORT
- NATIONAL STATE FOREST BOUNDARY
- WILDLIFE REFUGE
- NATIONAL STATE PARK BOUNDARY
- GAME LANDS BOUNDARY
- MILITARY RESERVATION BOUNDARY
- INDIAN RESERVATION BOUNDARY



YANCEY COUNTY  
NORTH CAROLINA

PREPARED BY THE  
NORTH CAROLINA DEPARTMENT OF TRANSPORTATION  
OPERATIONS PROGRAM MANAGEMENT UNIT - MAPPING SECTION  
IN COOPERATION WITH THE  
U.S. DEPARTMENT OF TRANSPORTATION  
FEDERAL HIGHWAY ADMINISTRATION

SCALE

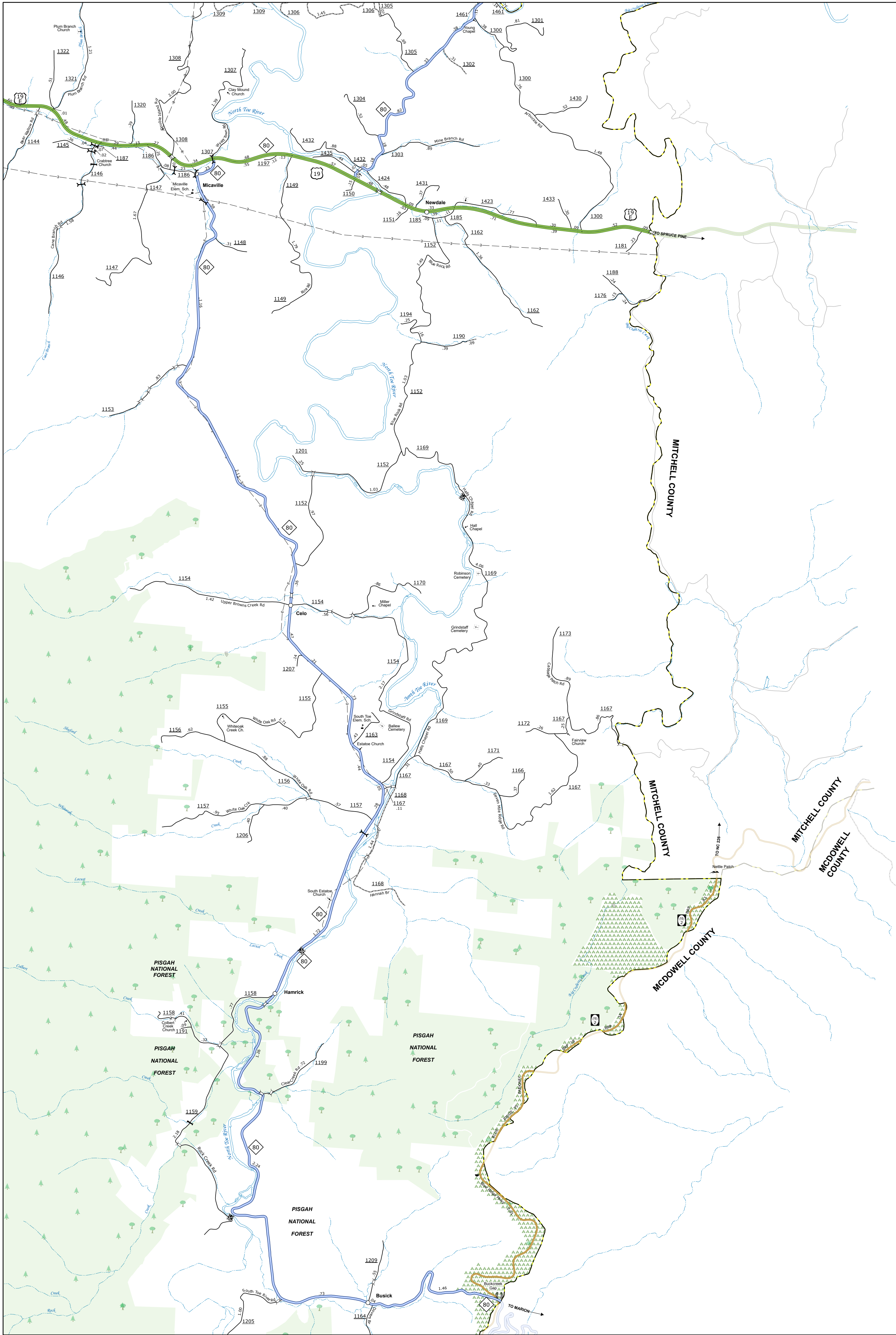


NORTH CAROLINA PLANE COORDINATE SYSTEM  
LAMBERT CONFORMAL CONIC PROJECTION

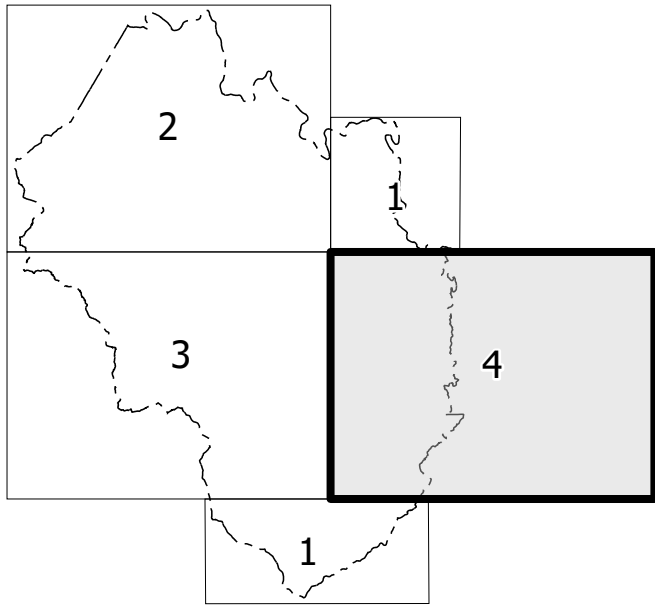


TERMS OF USE: The Mapping Section's goal is to provide the most accurate and current information possible. Map data is compiled from various sources, including aerial photography, ground surveys, and other data. The North Carolina Department of Transportation does not warrant the accuracy of the data provided on this map. The North Carolina Department of Transportation does not assume any liability for any errors in the map data. This map is for informational purposes only. For original copies of this map or additional map products, visit <http://www.ncdot.gov/MapProducts>.

COPIES OF THIS MAP ARE AVAILABLE TO THE PUBLIC AT THE FOLLOWING LOCATIONS: YANCEY COUNTY PLANNING AND DEVELOPMENT DEPARTMENT 100 N. MAIN ST. SUITE 200 YANCEY COUNTY, NC 28755-3440

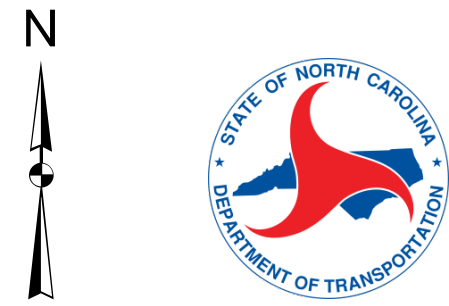


Sheet Key



LEGEND

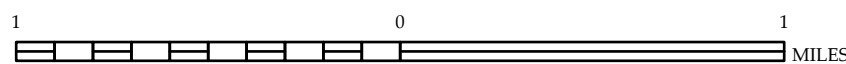
- INTERSTATE US NC Divided Hwy Undivided Hwy
- BLUE BRIDGE PARKWAY
- UNPAVED SURFACED ROAD
- HARD SURFACED ROAD
- NON-EXISTENT ROAD
- PROVISIONALLY DRAWN ROAD
- PROJECTED LOC. ATTN.
- INTERSECTION DISTANCE
- STANDARD ROAD BRIDGE
- RAILROAD BRIDGE
- DRAW SPAN ON BRIDGE
- PEDESTRIAN BRIDGE
- PEDESTRIAN WALKWAY
- PEDESTRIAN UNDERPASS
- VEHICULAR UNDERPASS
- TUNNEL
- CULVERT
- PIPE
- INTERSTATE HIGHWAY
- U.S. NUMBERED HIGHWAY
- N.C. NUMBERED HIGHWAY
- U.S. NUMBERED BI-CYCLE ROUTE
- N.C. NUMBERED BI-CYCLE ROUTE
- INTERSTATE INTERCHANGE NUMBER
- SECONDARY ROAD NUMBER
- UTILITY LINE
- RAILROAD LINE
- RAILROAD STATION
- INSIT AREA
- STATE LINE
- COUNTY LINE
- SMOOTHED URBAN BOUNDARIES
- CITY LIMITS
- FERRY ROUTE AND RAMP
- NARROW CREEK OR STREAM
- WIDE RIVER OR CREEK
- RESERVOIR, POND OR LAKE W/ ISLAND
- DAM OR DAM WITH LOCK
- WATERFALL
- SWAMP
- COMMUNITY
- COUNTY SEAT
- SCHOOL
- COLLEGE OR UNIVERSITY
- HOSPITAL
- COAST GUARD STATION
- CHURCH
- CHURCH WITH CEMETERY
- CEMETERY
- PATROL STATION
- CORRECTION OR PENAL INSTITUTION
- QUARRY
- MINE OR PIT
- HIGHWAY GARAGE OR MAINT. YARD
- HIGHWAY DIV. OR DIST. OFFICE
- MILITARY POST
- WEIGH STATION
- FARMGROUNDS
- HISTORICAL SITE
- POINTS OF INTEREST
- POST OFFICE
- STATE FOREST
- LIGHTHOUSE
- MOUNTAIN SUMMIT
- MOUNTAIN GAP
- OVERLOOK
- REST AREA
- VISITOR CTR/REST AREA
- WELCOME CTR/REST AREA
- AIRPORT
- MILITARY AIRPORT
- NATIONAL STATE FOREST BOUNDARY
- WILDLIFE REFUGE
- NATIONAL STATE PARK BOUNDARY
- GAME LANDS BOUNDARY
- MILITARY RESERVATION BOUNDARY
- INDIAN RESERVATION BOUNDARY



YANCEY COUNTY  
NORTH CAROLINA

PREPARED BY THE  
NORTH CAROLINA DEPARTMENT OF TRANSPORTATION  
OPERATIONS PROGRAM MANAGEMENT UNIT - MAPPING SECTION  
IN COOPERATION WITH THE  
U.S. DEPARTMENT OF TRANSPORTATION  
FEDERAL HIGHWAY ADMINISTRATION

SCALE



NORTH CAROLINA PLANE COORDINATE SYSTEM  
LAMBERT CONFORMAL CONIC PROJECTION