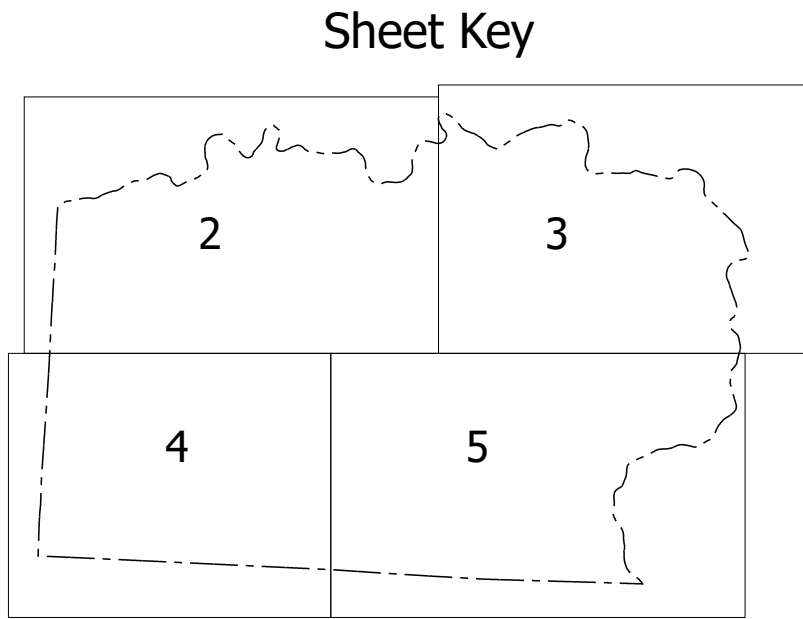
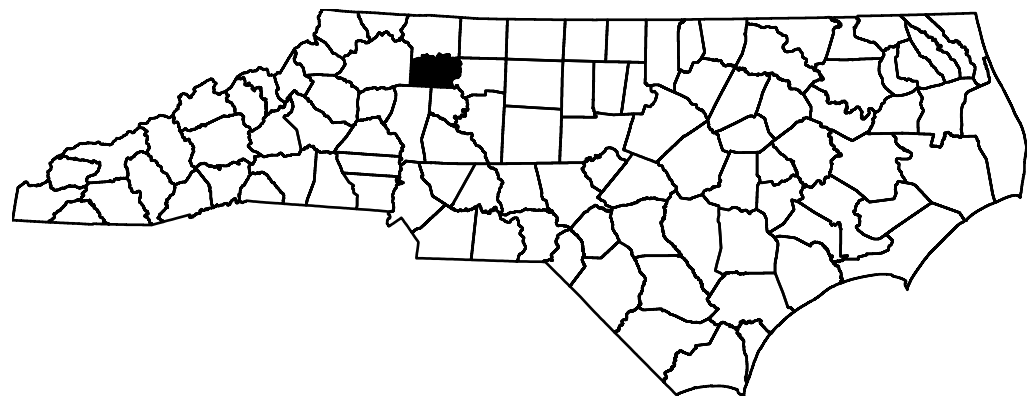
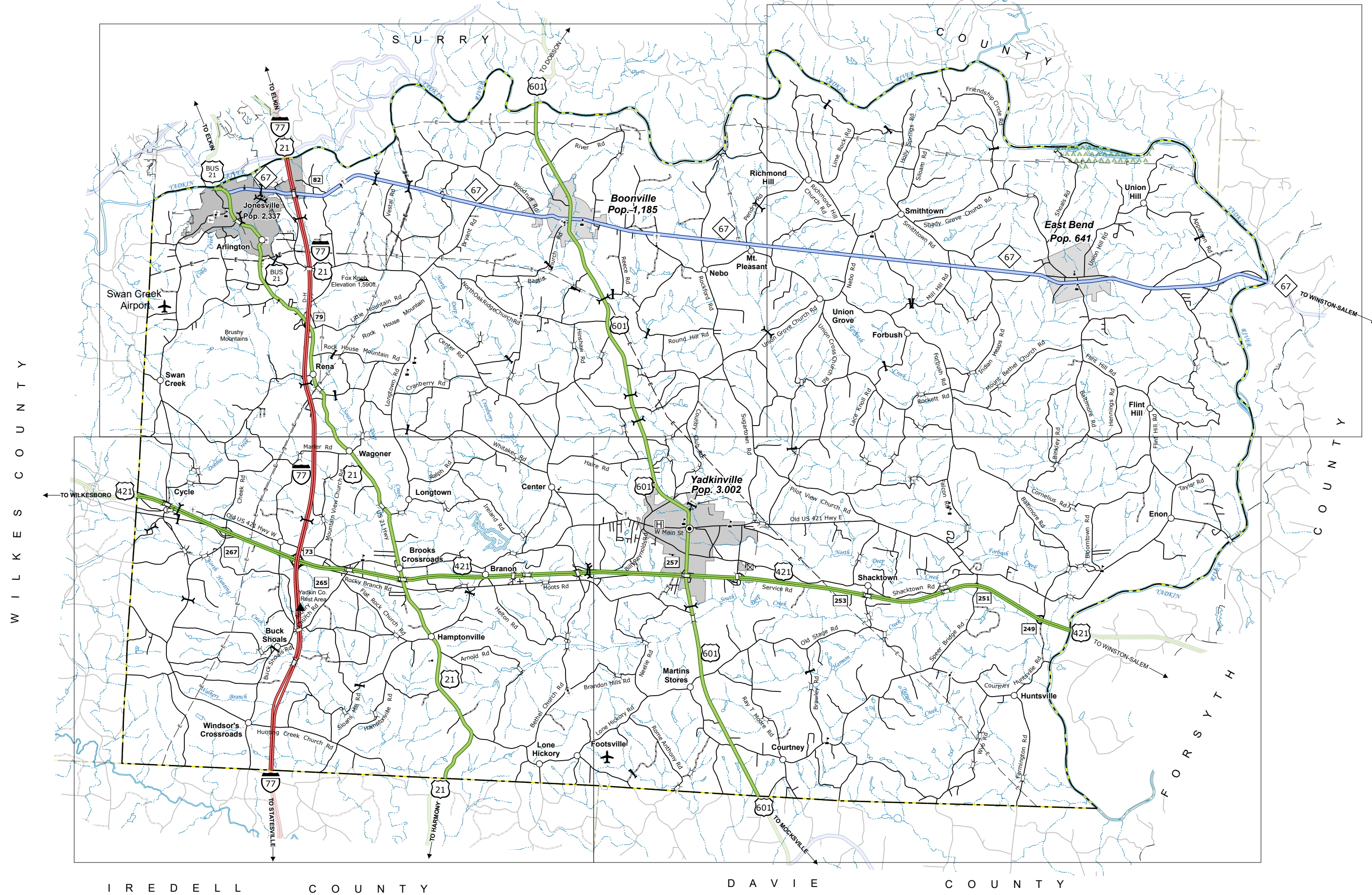
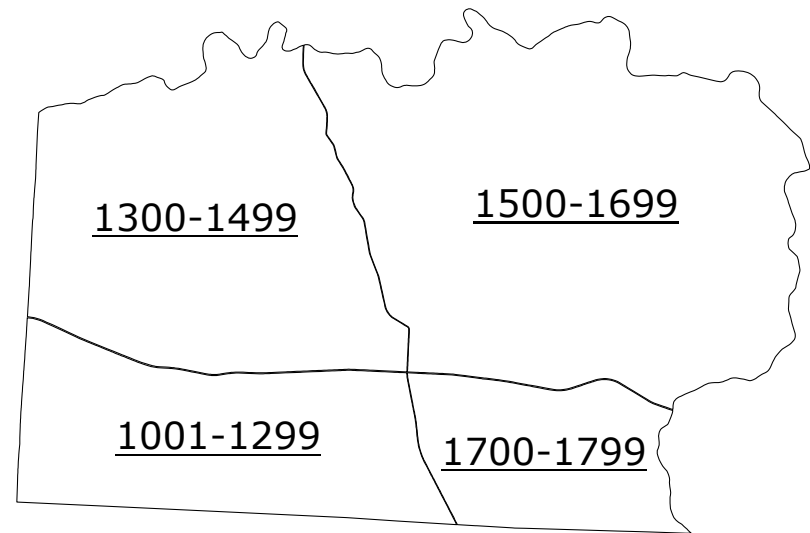


TERMS OF USE: This Mapping Section's goal is to provide the most accurate and current information possible. Map data is compiled from various sources including aerial photography, ground surveys, and other reliable sources. The information is provided as a general guide and is not intended to be used for legal purposes. The information is provided as a general guide and is not intended to be used for legal purposes. The information is provided as a general guide and is not intended to be used for legal purposes.

COPIES OF THIS MAP ARE AVAILABLE TO THE PUBLIC AT AN ANNUAL COST CONTACT US TO ORDER: 1-800-368-3346 OR VISIT OUR WEBSITE: www.ncdot.gov



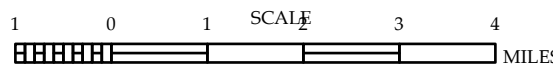
- LEGEND
- INTERSTATE US NC Divided Hwy Undivided Hwy
  - BLUE RIDGE PARKWAY
  - UNPAVED SURFACED ROAD
  - HARD SURFACED ROAD
  - NON-SYSTEM ROAD
  - PROVISIONALLY DRAWN ROAD
  - PROTECTED LOCATION
  - INTERSECTION DISTANCE
  - STANDARD ROAD BRIDGE
  - RAIL ROAD BRIDGE
  - DRAW SPAN ON BRIDGE
  - PEDESTRIAN BRIDGE
  - PEDESTRIAN WALKWAY
  - VEHICULAR UNDERPASS
  - TUNNEL
  - CULVERT
  - PIPE
  - INTERSTATE HIGHWAY
  - U.S. NUMBERED HIGHWAY
  - N.C. NUMBERED HIGHWAY
  - U.S. NUMBERED BICYCLE ROUTE
  - N.C. NUMBERED BICYCLE ROUTE
  - INTERSTATE INTERCHANGE NUMBER
  - SECONDARY ROAD NUMBER
  - 8888
  - UTILITY LINES
  - RAILROAD LINE
  - RAILROAD STATION
  - INSET AREA
  - STATE LINE
  - COUNTY LINE
  - SMOOTHED URBAN BOUNDARIES
  - CITY LIMITS
  - FERRY ROUTE AND RAMP
  - NARROW CREEK OR STREAM
  - WIDE RIVER OR CREEK
  - RESERVOIR, POND OR LAKE W/ ISLAND
  - DAM OR DAM WITH LOCK
  - WATERFALL
  - SWAMP
  - COMMUNITY
  - COUNTY SEAT
  - SCHOOL
  - COLLEGE OR UNIVERSITY
  - HOSPITAL
  - COAST GUARD STATION
  - CHURCH
  - CHURCH WITH CEMETERY
  - CEMETERY
  - PATROL STATION
  - CORRECTION OR PENAL INSTITUTION
  - QUARRY
  - MINE OR PIT
  - HIGHWAY GARAGE OR MAINT. YARD
  - HIGHWAY DIV. OR DIST. OFFICE
  - MILITARY POST
  - WEIGH STATION
  - FAIRGROUNDS
  - HISTORICAL SITE
  - POINTS OF INTEREST
  - POST OFFICE
  - STATE FOREST
  - LIGHTHOUSE
  - MOUNTAIN SUMMIT
  - MOUNTAIN GAP
  - OVERLOOK
  - REST AREA
  - VISITOR CTR/REST AREA
  - WELCOME CTR/REST AREA
  - AIRPORT
  - MILITARY AIRPORT
  - NATIONAL / STATE FOREST BOUNDARY
  - WILDLIFE REFUGE
  - NATIONAL / STATE PARK BOUNDARY
  - GAME LANDS BOUNDARY
  - MILITARY RESERVATION BOUNDARY
  - INDIAN RESERVATION BOUNDARY



# YADKIN COUNTY

## NORTH CAROLINA

PREPARED BY THE  
NORTH CAROLINA DEPARTMENT OF TRANSPORTATION  
OPERATIONS PROGRAM MANAGEMENT UNIT - MAPPING SECTION  
IN COOPERATION WITH THE  
U.S. DEPARTMENT OF TRANSPORTATION  
FEDERAL HIGHWAY ADMINISTRATION



SCALE FOR ENLARGEMENTS

NORTH CAROLINA PLANE COORDINATE SYSTEM  
LAMBERT CONFORMAL CONIC PROJECTION



COPIES OF THIS MAP ARE AVAILABLE TO THE  
PUBLIC. IF YOU HAVE ANY QUESTIONS, PLEASE CONTACT US TO ORDER:  
NORTH CAROLINA DEPARTMENT OF TRANSPORTATION  
MAILING ADDRESS: 1000 EAST 7TH STREET, SUITE 200  
RALEIGH, NC 27601-1600  
PHONE: 919-874-4400  
FAX: 919-874-4402  
E-MAIL: [ncdotinfo@ncdot.gov](mailto:ncdotinfo@ncdot.gov)

TERMS OF USE: The Mapping Section's goal is to provide the most accurate and current information possible. Map data is compiled from a variety of sources, including aerial photography, ground surveys, and other data. While every effort is made to ensure the accuracy of the data provided, the North Carolina Department of Transportation does not warrant the accuracy or completeness of the data. For digital copies of this map or for additional map products, visit [www.ncdot.gov/transportation/mapping](http://www.ncdot.gov/transportation/mapping).

**INTERSTATE: US NC**

**Divided Hwy Undivided Hwy**

**BLUE RIDGE PARKWAY**

**UNDIVIDED SURFACED ROAD**

**HARD SURFACED ROAD**

**NC NON-SYSTEM ROAD**

**PROVISIONALLY DRAWN ROAD**

**PROTECTED ROAD**

**INTERSECTION DISTANCE**

**STANDARD ROAD BRIDGE**

**RAILROAD BRIDGE**

**DRAWN SPAN ON BRIDGE**

**PEDESTRIAN BRIDGE**

**PEDESTRIAN WALKWAY**

**PEDESTRIAN UNDERPASS**

**VEHICLE LIAISON UNDERPASS**

**TUNNEL**

**CULVERT**

**PIPE**

**INTERSTATE HIGHWAY**

**U.S. NUMBERED HIGHWAY**

**N.C. NUMBERED HIGHWAY**

**N.C. NUMBERED BY-CLE ROUTE**

**INTERSTATE INTERCHANGE NUMBER**

**SECONDARY ROAD NUMBER**

**UTILITY LINES**

**RAILROAD LINE**

**RAILROAD STATION**

**INSET AREA**

**STATE LINE**

**COUNTY LINE**

**SMOOTHED URBAN BOUNDARIES**

**CITY LIMITS**

**FERRY ROUTE AND RAMP**

**NARROW CREEK OR STREAM**

**WIDE RIVER OR CREEK**

**RESERVOIR, POND OR LAKE W/ ISLAND**

**DAM OR DAM WITH LOCK**

**WATERSHED**

**SWAMP**

**COMMUNITY**

**CITY SEAT**

**SCHOOL**

**COLLEGE OR UNIVERSITY**

**HOSPITAL**

**COUNT GUARD STATION**

**CHURCH**

**CHURCH WITH CEMETERY**

**CEMETERY**

**POLY STATION**

**OBJECTION OR PENAL INSTITUTION**

**PAVILION**

**MINE OR PIT**

**GRABBER OR GRABBER OR MAINT. YARD**

**WIDE RIVER, OY, OR DIST. OFFICE**

**MILITARY POST**

**WEATHER STATION**

**FAIRGROUNDS**

**HISTORICAL SITE**

**POINTS OF INTEREST**

**POST OFFICE**

**STATE FOREST**

**LIGHTHOUSE**

**MOUNTAIN SUMMIT**

**MOUNTAIN GAP**

**OVERLOOK**

**REST AREA**

**VISITOR CTR REST AREA**

**WELCOME CTR REST AREA**

**AIRPORT**

**MILITARY AIRPORT**



PREPARED BY THE  
NORTH CAROLINA DEPARTMENT OF TRANSPORTATION  
OPERATIONS PROGRAM MANAGEMENT UNIT - MAPPING SECTION  
IN COOPERATION WITH THE  
U.S. DEPARTMENT OF TRANSPORTATION  
FEDERAL HIGHWAY ADMINISTRATION

SCALE

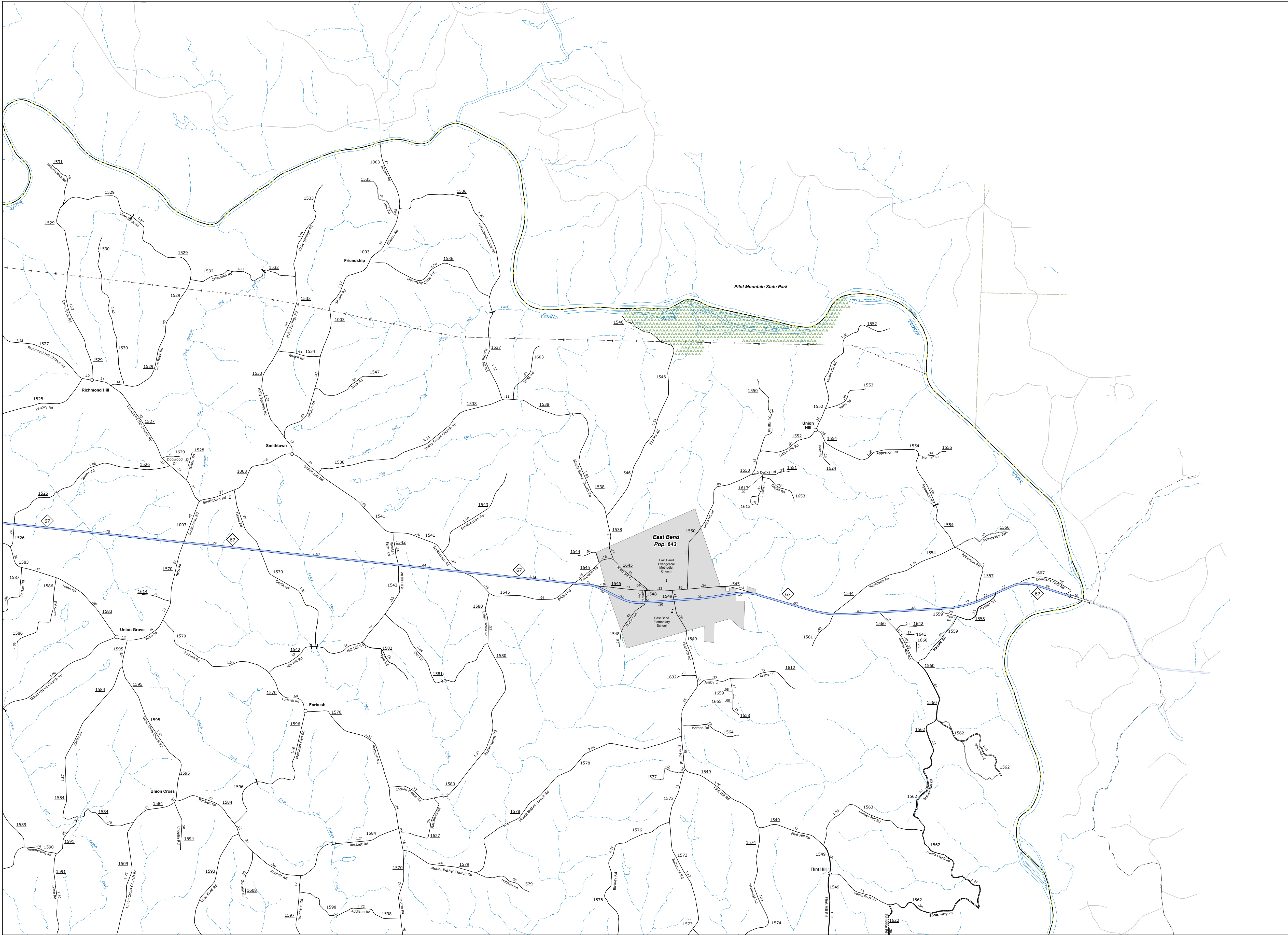
1 0 1 MILES

NORTH CAROLINA PLANE COORDINATE SYSTEM  
LAMBERT CONFORMAL CONIC PROJECTION

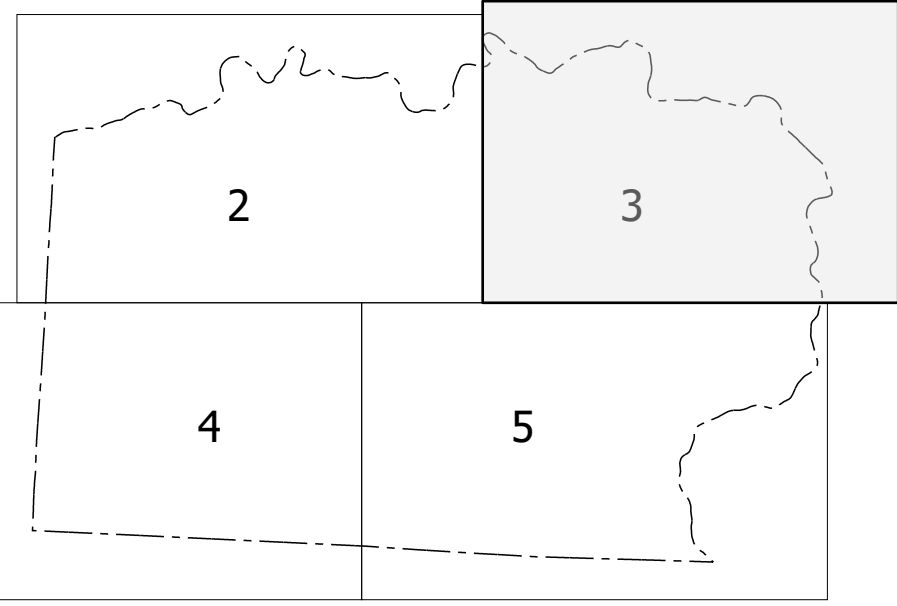


TERMS OF USE: This Mapbox Services page is to provide the most accurate and current information possible. Map data is compiled from various sources with varying degrees of accuracy. As a result, the accuracy, currency and completeness of the information is not guaranteed. Mapbox is not responsible for any errors or omissions in this map data. The information shown on this map was last updated in May 2025. For a full copy of the terms of use, visit <https://www.mapbox.com/about/maps/>

COPIES OF THIS MAP ARE AVAILABLE TO THE PUBLIC AT NO CHARGE. CONTACT US TO ORDER: [info@ncdot.gov](mailto:info@ncdot.gov) OR 1-800-368-6848



### Sheet Key



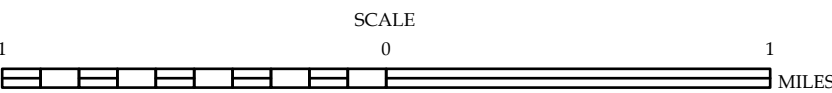
### LEGEND

- INTERSTATE US NC
- Divided Hwy
- Undivided Hwy
- BLUE RIDGE PARKWAY
- UNPAVED SURFACED ROAD
- HARD SURFACED ROAD
- NON-SYSTEM ROAD
- PROVISIONALLY DRAWN ROAD
- PROJECTED LOCATION
- INTERSECTION DISTANCE
- STANDARD ROAD BRIDGE
- RAILROAD BRIDGE
- DRAW SPAN ON BRIDGE
- PEDESTRIAN BRIDGE
- PEDESTRIAN WALKWAY
- PEDESTRIAN UNDERPASS
- VEHICULAR UNDERPASS
- CULVERT
- PIPE
- INTERSTATE HIGHWAY
- U.S. NUMBERED HIGHWAY
- N.C. NUMBERED HIGHWAY
- U.S. NUMBERED BICYCLE ROUTE
- N.C. NUMBERED BICYCLE ROUTE
- INTERSTATE INTERCHANGE NUMBER
- SECONDARY ROAD NUMBER
- TELEPHONE
- UTILITY LINES
- RAILROAD LINE
- RAILROAD STATION
- INSET AREA
- STATE LINE
- COUNTY LINE
- SMOOTHED URBAN BOUNDARIES
- CITY LIMITS
- FERRY ROUTE AND RAMP
- NARROW CREEK OR STREAM
- WIDE RIVER OR CREEK
- RESERVOIR, POND OR LAKE W/ ISLAND
- DAM OR DAM WITH LOCK
- WATERFALL
- SWAMP
- COMMUNITY
- COUNTY SEAT
- SCHOOL
- COLLEGE OR UNIVERSITY
- HOSPITAL
- COAST GUARD STATION
- CHURCH
- CHURCH WITH CEMETERY
- CEMETERY
- PATROL STATION
- CORRECTION OR PENAL INSTITUTION
- QUARRY
- MINE OR PIT
- HIGHWAY GARAGE OR MAINT. YARD
- HIGHWAY DIV. OR DIST. OFFICE
- MILITARY POST
- WEIGH STATION
- FAIRGROUNDS
- HISTORICAL SITE
- POINTS OF INTEREST
- POST OFFICE
- STATE FOREST
- LIGHTHOUSE
- MOUNTAIN SUMMIT
- MOUNTAIN GAP
- OVERLOOK
- REST AREA
- VISITOR CENTER AREA
- WELCOME CENTER AREA
- AIRPORT
- MILITARY AIRPORT
- NATIONAL / STATE FOREST BOUNDARY
- WILDLIFE REFUGE
- NATIONAL / STATE PARK BOUNDARY
- GAME LANDS BOUNDARY
- MILITARY RESERVATION BOUNDARY
- INDIAN RESERVATION BOUNDARY



## YADKIN COUNTY NORTH CAROLINA

PREPARED BY THE  
NORTH CAROLINA DEPARTMENT OF TRANSPORTATION  
OPERATIONS PROGRAM MANAGEMENT UNIT - MAPPING SECTION  
IN COOPERATION WITH THE  
U.S. DEPARTMENT OF TRANSPORTATION  
FEDERAL HIGHWAY ADMINISTRATION

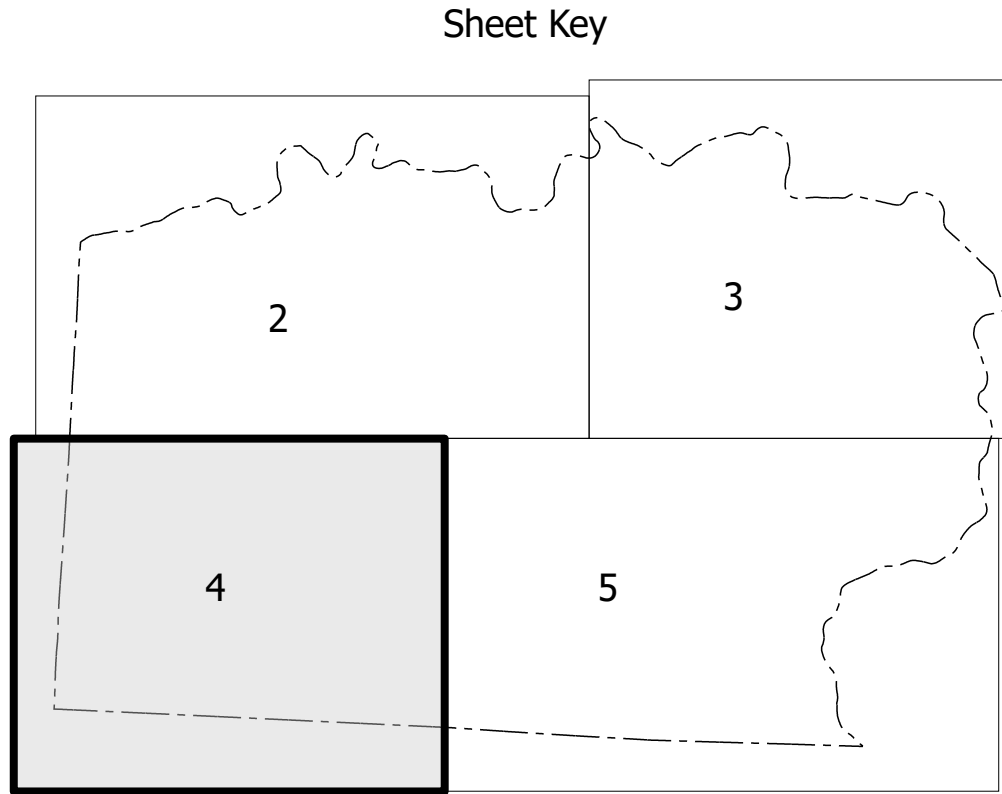
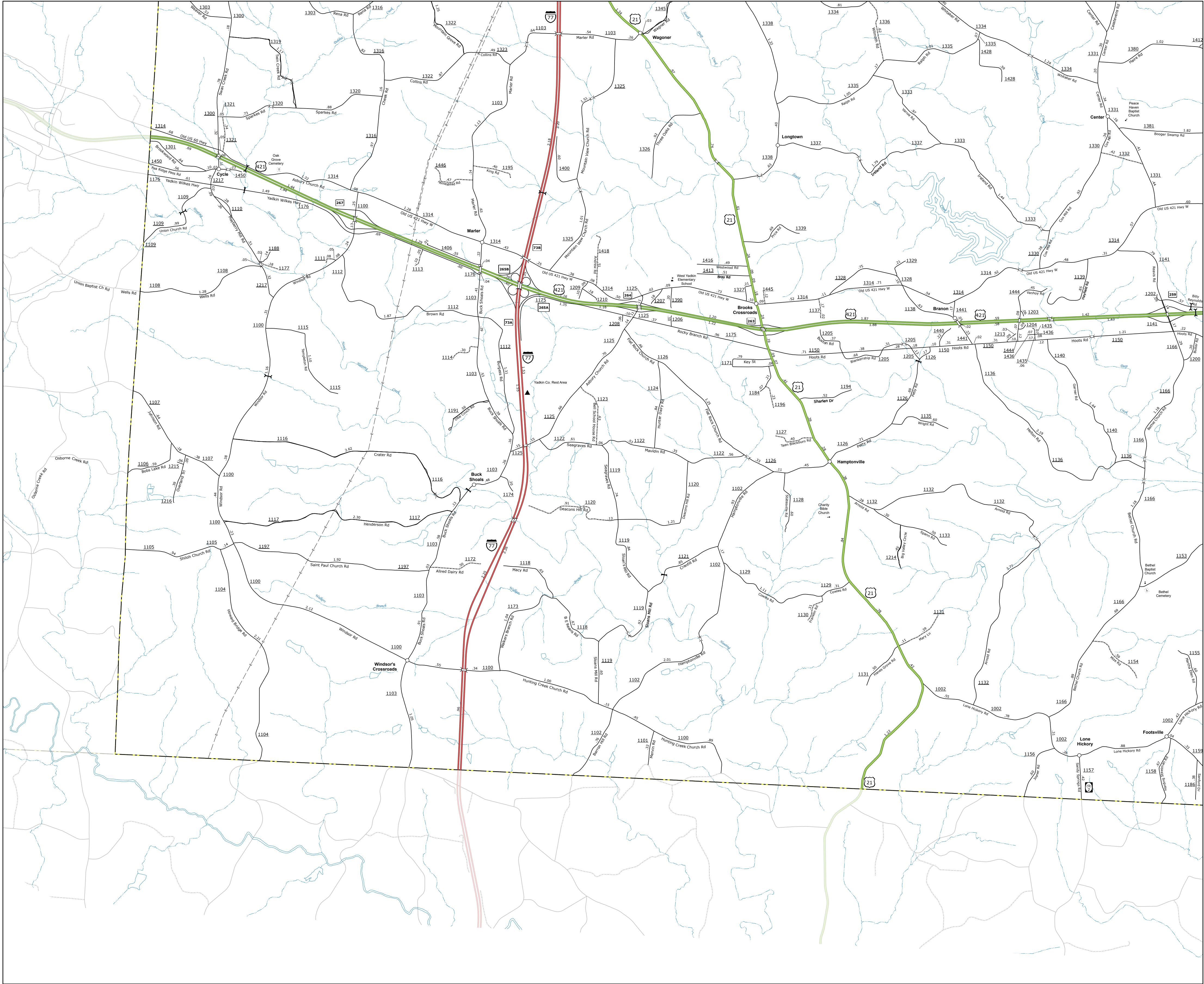


NORTH CAROLINA PLANE COORDINATE SYSTEM  
LAMBERT CONFORMAL CONIC PROJECTION



TERMS OF USE: The Mapping Section's goal is to provide the most accurate and current information possible. Map data is compiled from the North Carolina Department of Transportation's (NCDOT) Geographic Information System (GIS) and other sources. The data provided is for informational purposes only. The North Carolina Department of Transportation does not warrant the accuracy of the data provided. For official copies of this map or additional map products, visit <https://www.ncdot.gov/transportation/Mapping/Products>.

COPIES OF THIS MAP ARE AVAILABLE TO THE PUBLIC AT THE NORTH CAROLINA DEPARTMENT OF TRANSPORTATION, 1000 EAST 7TH STREET, RALEIGH, NC 27601. (919) 882-4400.

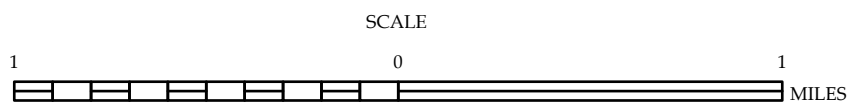


- LEGEND**
- INTERSTATE US NC Divided Hwy Undivided Hwy
- BLUE RIDGE PARKWAY
- UNPAVED SURFACED ROAD
- HARD SURFACED ROAD
- NON-SYSTEM ROAD
- PROVISIONALLY DRAWN ROAD
- PROJECTED LOCATION
- INTERSECTION DISTANCE
- STANDARD ROAD BRIDGE
- RAILROAD BRIDGE
- DRAW SPAN ON BRIDGE
- PEDESTRIAN BRIDGE
- PEDESTRIAN WALKWAY
- PEDESTRIAN UNDERPASS
- VEHICULAR UNDERPASS
- TUNNEL
- CULVERT
- PIPE
- INTERSTATE HIGHWAY
- U.S. NUMBERED HIGHWAY
- N.C. NUMBERED HIGHWAY
- U.S. NUMBERED BICYCLE ROUTE
- N.C. NUMBERED BICYCLE ROUTE
- INTERSTATE INTERCHANGE NUMBER
- SECONDARY ROAD NUMBER
- UTILITY LINES
- RAILROAD LINE
- RAILROAD STATION
- INSET AREA
- STATE LINE
- COUNTY LINE
- SMOOTHED URBAN BOUNDARIES
- CITY LIMITS
- FERRY ROUTE AND RAMP
- NARROW CREEK OR STREAM
- WIDE RIVER OR CREEK
- RESERVOIR, POND OR LAKE W/ ISLAND
- DAM OR DAM WITH LOCK
- WATERFALL
- SWAMP
- COMMUNITY
- COUNTY SEAT
- SCHOOL
- COLLEGE OR UNIVERSITY
- HOSPITAL
- COAST GUARD STATION
- CHURCH
- CHURCH WITH CEMETERY
- CEMETERY
- PATROL STATION
- CORRECTION OR PENAL INSTITUTION
- QUARRY
- MINE OR PIT
- HIGHWAY GARAGE OR MAINT. YARD
- HIGHWAY DIV. OR DIST. OFFICE
- MILITARY POST
- WEIGH STATION
- FAIRGROUNDS
- HISTORICAL SITE
- POINTS OF INTEREST
- POST OFFICE
- STATE FOREST
- LIGHTHOUSE
- MOUNTAIN SUMMIT
- MOUNTAIN GAP
- OVERLOOK
- REST AREA
- RESTOR. CTR. REST AREA
- WELCOME CTR. REST AREA
- AIRPORT
- MILITARY AIRPORT
- NATIONAL / STATE FOREST BOUNDARY
- WILDLIFE REFUGE
- NATIONAL / STATE PARK BOUNDARY
- GAME LANDS BOUNDARY
- MILITARY RESERVATION BOUNDARY
- INDIAN RESERVATION BOUNDARY



## YADKIN COUNTY NORTH CAROLINA

PREPARED BY THE  
NORTH CAROLINA DEPARTMENT OF TRANSPORTATION  
OPERATIONS PROGRAM MANAGEMENT UNIT - MAPPING SECTION  
IN COOPERATION WITH THE  
U.S. DEPARTMENT OF TRANSPORTATION  
FEDERAL HIGHWAY ADMINISTRATION



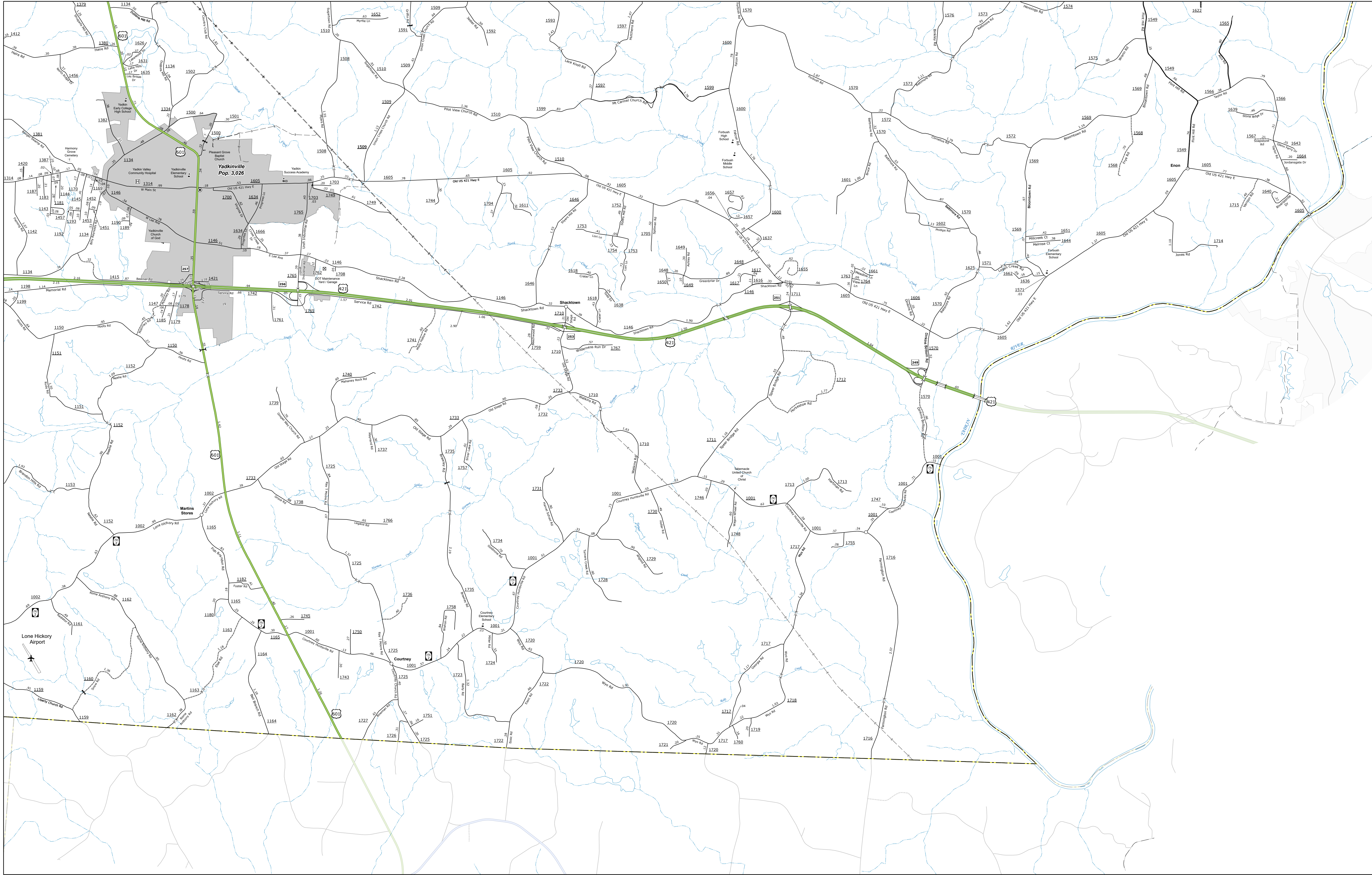
NORTH CAROLINA PLANE COORDINATE SYSTEM  
LAMBERT CONFORMAL CONIC PROJECTION

SHEET 4 of 5



TERMS OF USE: The Mapping Services portal is provided to provide the most accurate and current information possible. Map data is compiled from numerous sources with varying dates of publication and map accuracy standards. As a result, the accuracy, currency and completeness of information shown on this map cannot be guaranteed to be a legal document. The information shown on this map was last updated in May 2023. For a full copy of this map, please contact the provider.

COPIES OF THIS MAP ARE AVAILABLE TO THE PUBLIC AT NO CHARGE. CONTACT US TO ORDER: 1-800-447-4466 OR VISIT: <https://www.ncdot.gov/Information/Maps/Products/Products.aspx>



2

3

4

5

LEGEND

INTERSTATE

US

NC

Divided Hwy

Undivided Hwy

BLUE RIDGE PARKWAY

UNPAVED SURFACED ROAD

HARD SURFACED ROAD

NON-SYSTEM ROAD

PROVISIONALLY DRAWN ROAD

PROJECTED LOCATION

INTERSECTION DISTANCE

STANDARD ROAD BRIDGE

RAILROAD BRIDGE

DRAW SPAN ON BRIDGE

PEDESTRIAN BRIDGE

PEDESTRIAN UNDERPASS

VEHICULAR UNDERPASS

TUNNEL

CULVERT

PIPE

INTERSTATE HIGHWAY

U.S. NUMBERED HIGHWAY

N.C. NUMBERED HIGHWAY

U.S. NUMBERED BICYCLE ROUTE

N.C. NUMBERED BICYCLE ROUTE

INTERSTATE INTERCHANGE NUMBER

SECONDARY ROAD NUMBER

TELEPHONE

RAILROAD LINE

RAILROAD STATION

INLET AREA

STATE LINE

COUNTY LINE

SMOOTHED URBAN BOUNDARIES

CITY LIMITS

FERRY ROUTE AND RAMP

NARROW CREEK OR STREAM

WIDE RIVER OR CREEK

RESERVOIR, POND OR LAKE W/ ISLAND

DAM OR DAM WITH LOCK

WATERFALL

SWAMP

COMMUNITY

COUNTY SEAT

SCHOOL

COLLEGE OR UNIVERSITY

HOSPITAL

COAST GUARD STATION

CHURCH

CHURCH WITH CEMETERY

CEMETERY

PATROL STATION

CORRECTION OR PENAL INSTITUTION

QUARRY

MINE OR PIT

HIGHWAY GARAGE OR MAINT. YARD

HIGHWAY DIV. OR DIST. OFFICE

MILITARY POST

WEIGH STATION

FAIRGROUNDS

HISTORICAL SITE

POINTS OF INTEREST

POST OFFICE

STATE FOREST

LIGHTHOUSE

MOUNTAIN SUMMIT

MOUNTAIN GAP

OVERLOOK

REST AREA

VISITOR CTR/REST AREA

WELCOME CTR/REST AREA

AIRPORT

MILITARY AIRPORT

NATIONAL / STATE FOREST BOUNDARY

WILDLIFE REFUGE

NATIONAL / STATE PARK BOUNDARY

GAME LANDS BOUNDARY

MILITARY RESERVATION BOUNDARY

INDIAN RESERVATION BOUNDARY

N

1

0

1

MILES

STATE OF NORTH CAROLINA

DEPARTMENT OF TRANSPORTATION

YADKIN COUNTY

NORTH CAROLINA

PREPARED BY THE

NORTH CAROLINA DEPARTMENT OF TRANSPORTATION

OPERATIONS PROGRAM MANAGEMENT UNIT - MAPPING SECTION

IN COOPERATION WITH THE

U.S. DEPARTMENT OF TRANSPORTATION

FEDERAL HIGHWAY ADMINISTRATION

SCALE

1

0

1

MILES

NORTH CAROLINA PLANE COORDINATE SYSTEM

LAMBERT CONFORMAL CONIC PROJECTION

SHEET 5 of 5

DIVISION 11 DISTRICT 1 YADKIN COUNTY NORTH CAROLINA FIPS 197