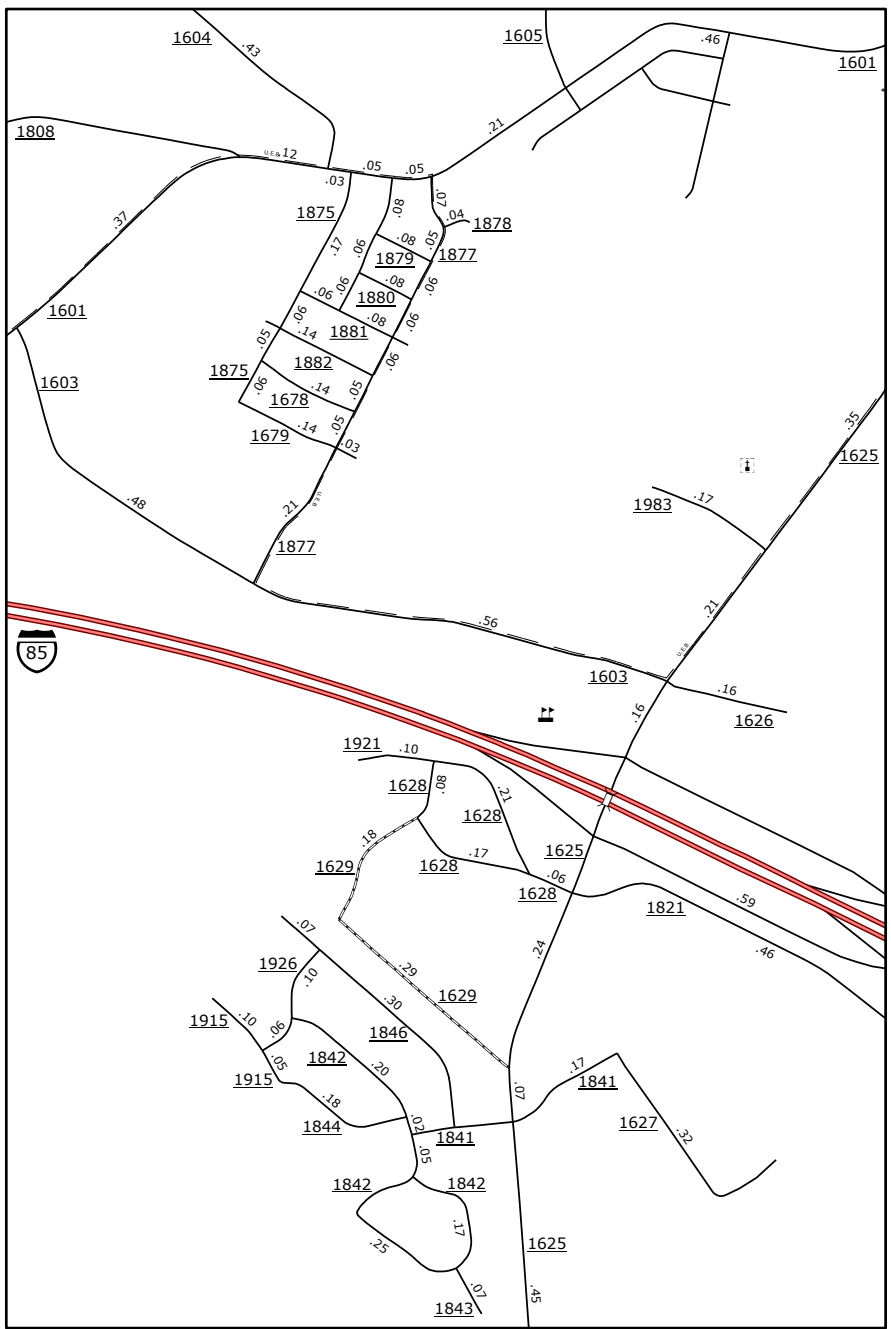
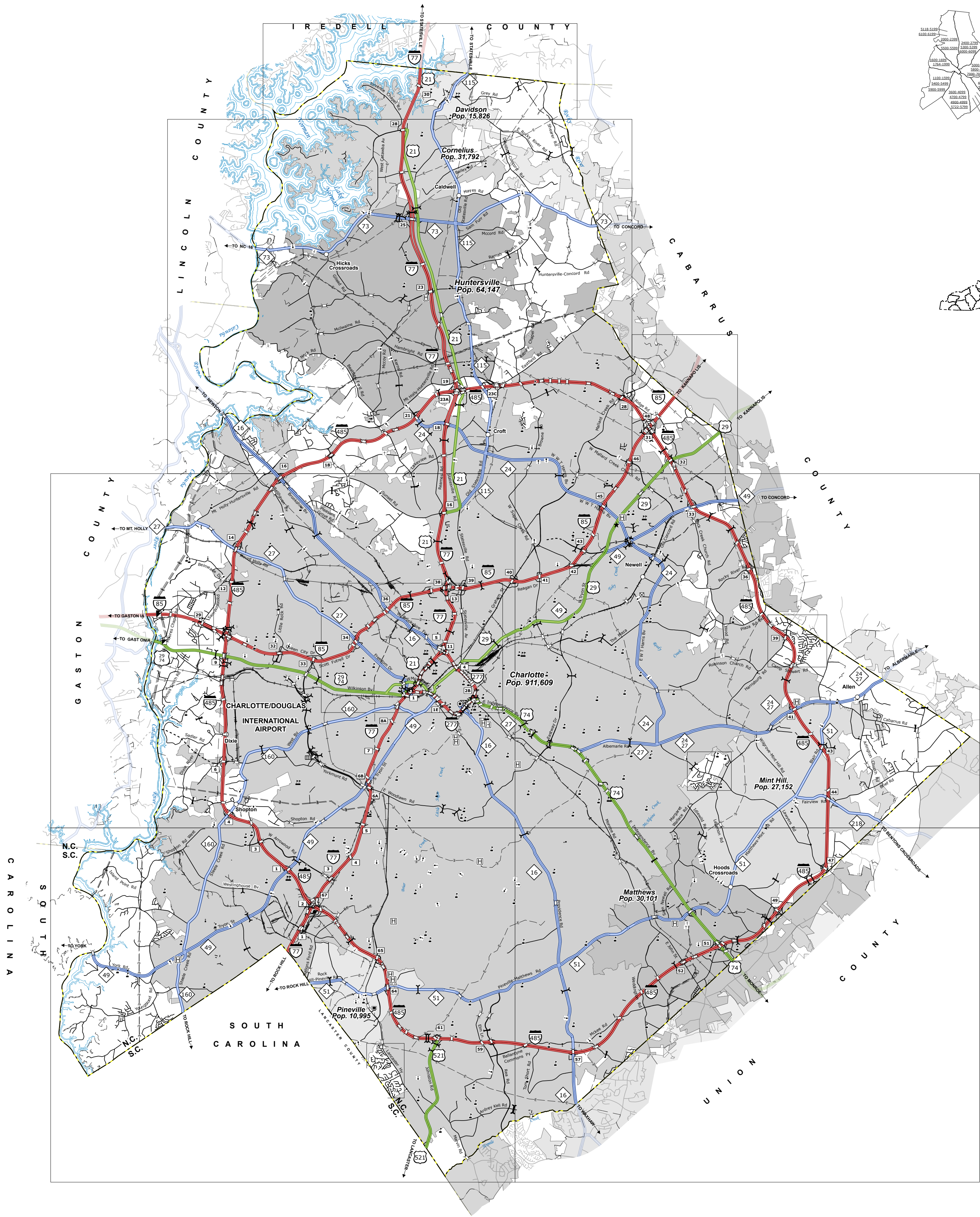


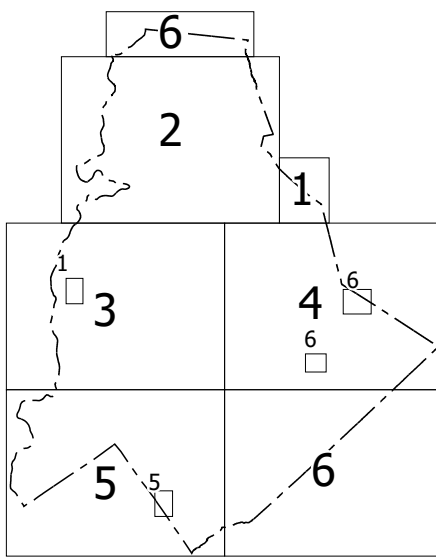
Northeast Mecklenburg



Moores Chapel



Sheet Key



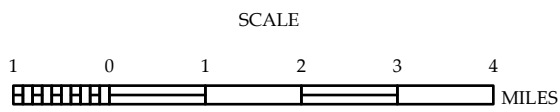
LEGEND

- INTERSTATE US NC
- Divided Hwy
- Undivided Hwy
- BLUE RIDGE PARKWAY
- UNPAVED/RESERVED ROAD
- ROAD SURFACE ROAD
- NON-SYSTEM ROAD
- PROPOSED/RESERVED ROAD
- PROPOSED LOCATION
- INTERSECTION DISTANCE
- STANDARD ROAD-BRIDGE
- RAILROAD BRIDGE
- DRAW SPAN ON BRIDGE
- PEDESTRIAN BRIDGE
- PEDESTRIAN WALKWAY
- PEDESTRIAN UNDERPASS
- VEHICLE UNDERPASS
- TUNNEL
- CULVERT
- PIPE
- INTERSTATE HIGHWAY
- U.S. NUMBERED HIGHWAY
- N.C. NUMBERED HIGHWAY
- U.S. NUMBERED BICYCLE ROUTE
- S.C. NUMBERED BICYCLE ROUTE
- INTERSTATE INTERCHANGE NUMBER
- SECONDARY ROAD NUMBER
- UTILITY LINE
- RAILROAD LINE
- RAILROAD STATION
- INSET AREA
- COUNTY LINE
- SMOOTHED URBAN BOUNDARIES
- CITY LIMITS
- FERRY ROUTE AND RAMP
- NARROW CREEK OR STREAM
- WIDE RIVER OR CREEK
- RESERVOIR, POND OR LAKE W/ ISLAND
- DAM OR DAM WITH LOCK
- WATERFALL
- SWAMP
- COMMUNITY
- COUNTY SEAT
- SCHOOL
- COLLEGE OR UNIVERSITY
- HOSPITAL
- COAST GUARD STATION
- CHURCH
- CHURCH WITH CEMETERY
- CEMETERY
- POLICE STATION
- CORRECTION OR PENAL INSTITUTION
- QUARRY
- MINE OR PIT
- HIGHWAY GARAGE OR MAINT. YARD
- HIGHWAY DIV. OR DIST. OFFICE
- MILITARY POST
- WEIGH STATION
- FAIRBOARDS
- HISTORICAL SITE
- POINTS OF INTEREST
- POST OFFICE
- STATE FOREST
- LIGHTHOUSE
- MOUNTAIN SUMMIT
- OVERLOOK
- MOUNTAIN GAP
- BEST AREA
- VISITOR CTR. REST AREA
- WELCOME CTR. REST AREA
- AIRPORT
- MILITARY AIRPORT
- NATIONAL/ STATE FOREST BOUNDARY
- WILDLIFE REFUGE
- NATIONAL/ STATE PARK BOUNDARY
- GAME LANDS BOUNDARY
- MILITARY RESERVATION BOUNDARY
- INDIAN RESERVATION BOUNDARY



MECKLENBURG COUNTY  
NORTH CAROLINA

PREPARED BY THE  
NORTH CAROLINA DEPARTMENT OF TRANSPORTATION  
OPERATIONS PROGRAM MANAGEMENT UNIT - MAPPING SECTION  
IN COOPERATION WITH THE  
U.S. DEPARTMENT OF TRANSPORTATION  
FEDERAL HIGHWAY ADMINISTRATION



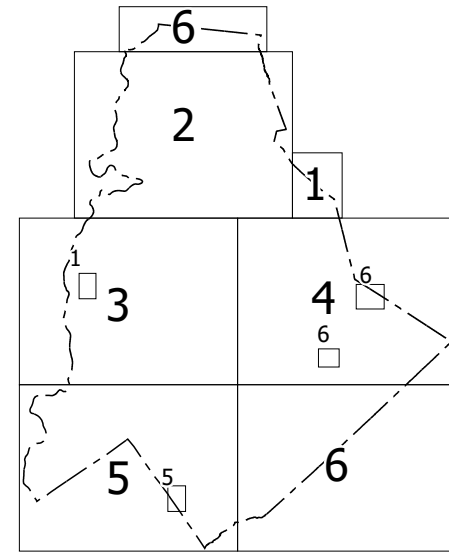
NORTH CAROLINA PLANE COORDINATE SYSTEM  
LAMBERT CONFORMAL CONIC PROJECTION

COPIES OF THIS MAP ARE AVAILABLE TO THE  
PUBLIC AT NOMINAL COST. CONTACT US TO ORDER:  
[mapinfo@ncdot.com](mailto:mapinfo@ncdot.com)  
<http://www.ncdot.com/StateMapping/Pages/Ordering-Maps.aspx>  
(919) 634-6480

TERMS OF USE: The Mapping Section's goal is to provide the most accurate and current information possible. Map data is compiled from  
numerous sources with varying dates of publication and map accuracy standards. As a result, the accuracy, currency, and completeness of  
the data provided will vary. The North Carolina Department of Transportation shall not be held liable for any errors in the map data. This  
map cannot be construed to be a legal document. The information shown on this map was last updated in May 2025.  
For digital copies of this map or additional map products, visit [www.ncdot.com/StateMapping/Pages/Ordering-Maps.aspx](http://www.ncdot.com/StateMapping/Pages/Ordering-Maps.aspx)



COPIES OF THIS MAP ARE AVAILABLE TO THE  
PUBLIC AT NOMINAL COST. CONTACT US TO ORDER:  
mapping@support@arcadigital.com  
<mailto:mapping@support@arcadigital.com>  
<http://arcadigital.com/resources/Santa-Margalo-Place>  
(919) 834-8480



LEGEND

- [illegible]



PREPARED BY THE  
NORTH CAROLINA DEPARTMENT OF TRANSPORTATION  
OPERATIONS PROGRAM MANAGEMENT UNIT - MAPPING SECTION  
IN COOPERATION WITH THE  
U.S. DEPARTMENT OF TRANSPORTATION  
FEDERAL HIGHWAY ADMINISTRATION

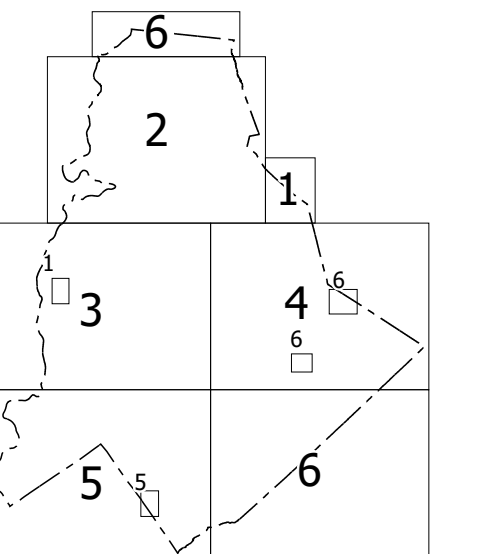
PREPARED BY THE  
NORTH CAROLINA DEPARTMENT OF TRANSPORTATION  
OPERATIONS PROGRAM MANAGEMENT UNIT - MAPPING SECTION  
IN COOPERATION WITH THE  
U.S. DEPARTMENT OF TRANSPORTATION  
FEDERAL HIGHWAY ADMINISTRATION



NORTH CAROLINA PLANE COORDINATE SYSTEM  
LAMBERT CONFORMAL CONIC PROJECTION



COPIES OF THIS MAP ARE AVAILABLE TO THE PUBLIC AT NOMINAL COST. CONTACT US TO ORDER: [mapping@support@arcadology.com](mailto:mapping@support@arcadology.com)  
<https://osmcart.net/dot/40w/resources/Santa-Margalo-Place>  
 (919) 834-8480

[illegible]

PREPARED BY THE  
NORTH CAROLINA DEPARTMENT OF TRANSPORTATION  
OPERATIONS PROGRAM MANAGEMENT UNIT - MAPPING SECTION  
IN COOPERATION WITH THE  
U.S. DEPARTMENT OF TRANSPORTATION  
FEDERAL HIGHWAY ADMINISTRATION

PREPARED BY THE  
NORTH CAROLINA DEPARTMENT OF TRANSPORTATION  
OPERATIONS PROGRAM MANAGEMENT UNIT - MAPPING SECTION  
IN COOPERATION WITH THE  
U.S. DEPARTMENT OF TRANSPORTATION  
FEDERAL HIGHWAY ADMINISTRATION

NORTH CAROLINA PLANE COORDINATE SYSTEM  
LAMBERT CONFORMAL CONIC PROJECTION



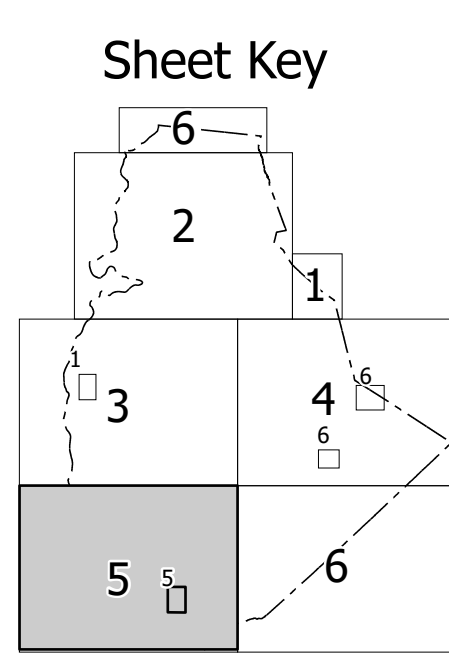
COPIES OF THIS MAP ARE AVAILABLE TO THE PUBLIC AT NOMINAL COST. CONTACT US TO ORDER: [mapinfo@support@ncdot.gov](mailto:mapinfo@support@ncdot.gov)  
<https://connect.ncdot.gov/resources/State-Mapping/Phone>  
 (919) 834-8480

- 

PREPARED BY THE  
NORTH CAROLINA DEPARTMENT OF TRANSPORTATION  
OPERATIONS PROGRAM MANAGEMENT UNIT - MAPPING SECTION  
IN COOPERATION WITH THE  
U.S. DEPARTMENT OF TRANSPORTATION  
FEDERAL HIGHWAY ADMINISTRATION



COPIES OF THIS MAP ARE AVAILABLE TO THE  
PUBLIC AT NOMINAL COST. CONTACT US TO ORDER:  
mapping@support@ncdot.gov  
<https://connect.ncdot.gov/resources/State-Mapping-Page>  
(919) 834-8480

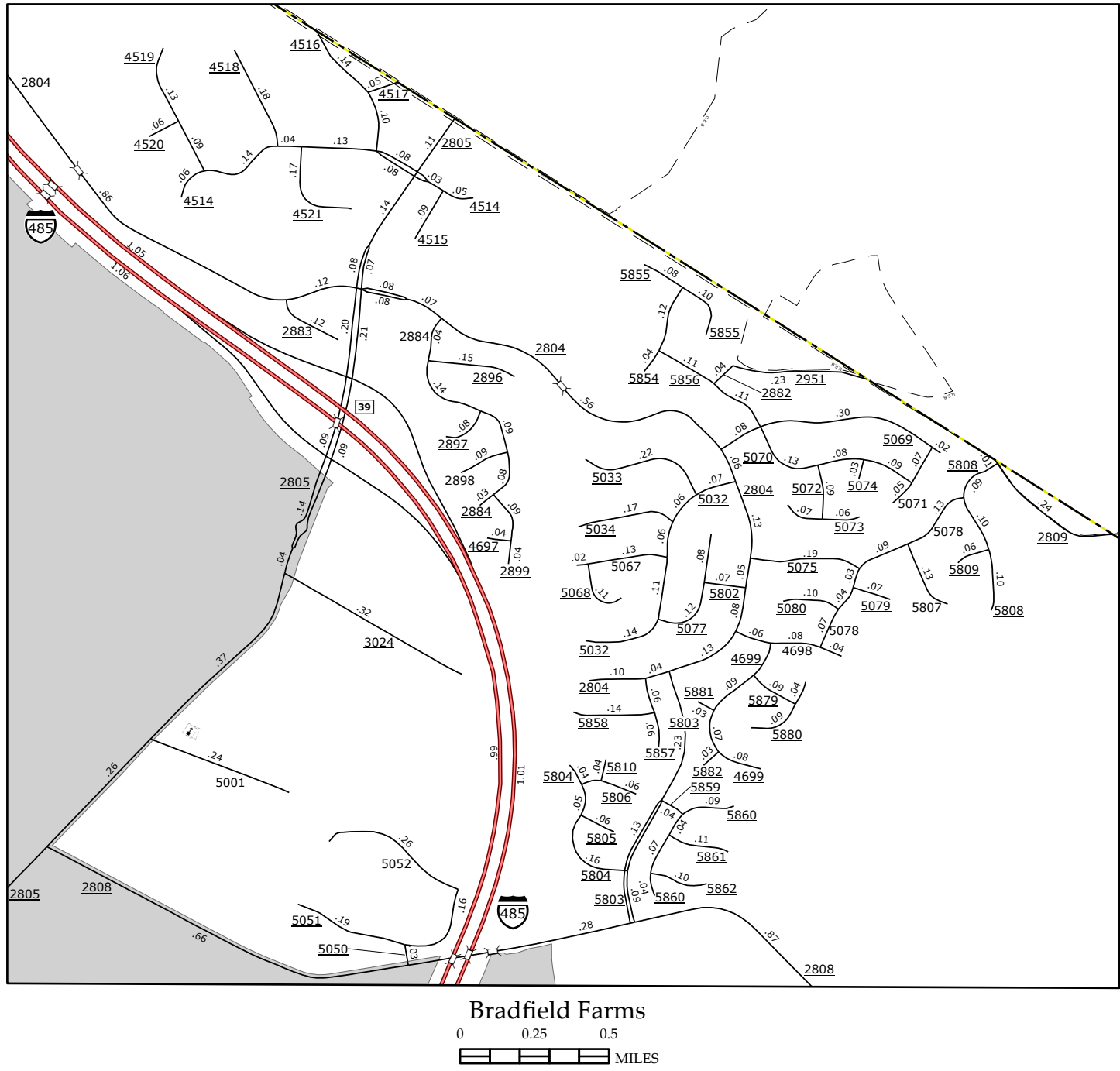
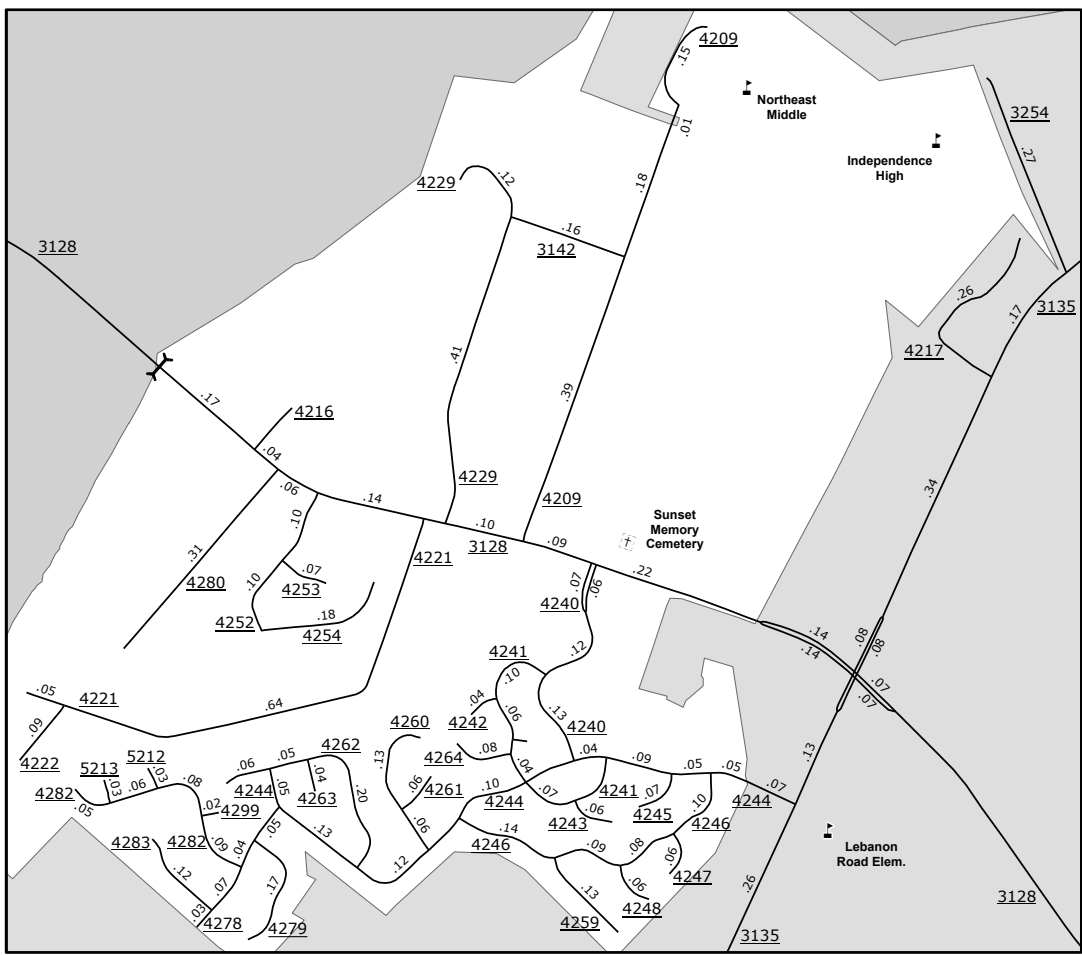


PREPARED BY THE  
NORTH CAROLINA DEPARTMENT OF TRANSPORTATION  
OPERATIONS PROGRAM MANAGEMENT UNIT - MAPPING SECTION  
IN COOPERATION WITH THE  
U.S. DEPARTMENT OF TRANSPORTATION  
FEDERAL HIGHWAY ADMINISTRATION

NORTH CAROLINA PLANE COORDINATE SYSTEM  
LAMBERT CONFORMAL CONIC PROJECTION



COPIES OF THIS MAP ARE AVAILABLE TO THE  
PUBLIC AT NOMINAL COST. CONTACT US TO ORDER:  
mapping@portland.oregon.gov  
[m.mapping@portland.oregon.gov](mailto:mapping@portland.oregon.gov)  
(503) 834-8480



INTERSTATE    US    NC    Divided Hwy

Undivided Hwy

BLUE RIDGE PARKWAY

UNPAVED SURFACED ROAD

HARD SURFACED ROAD

NON-SYSTEM ROAD

PROVISIONALLY DRAWN ROAD

PROJECTED LOCATION

INTERSECTION DISTANCE

STANDARD ROAD BRIDGE

RAILROAD BRIDGE

DRAW SPAN ON BRIDGE

PEDESTRIAN BRIDGE

PEDESTRIAN WALKWAY

PEDESTRIAN UNDERPASS

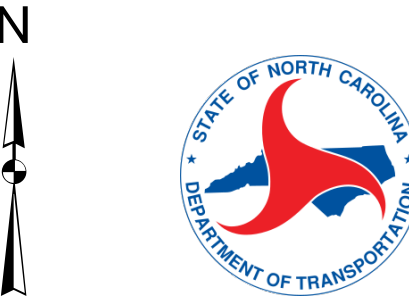
VEHICULAR UNDERPASS

TUNNEL

CULVERT

PIPE

- [illegible]



PREPARED BY THE  
NORTH CAROLINA DEPARTMENT OF TRANSPORTATION  
OPERATIONS PROGRAM MANAGEMENT UNIT - MAPPING SECTION  
IN COOPERATION WITH THE  
U.S. DEPARTMENT OF TRANSPORTATION  
FEDERAL HIGHWAY ADMINISTRATION

SCALE

0 0.5 1

MILE

NORTH CAROLINA PLANE COORDINATE SYSTEM  
LAMBERT CONFORMAL CONIC PROJECTION