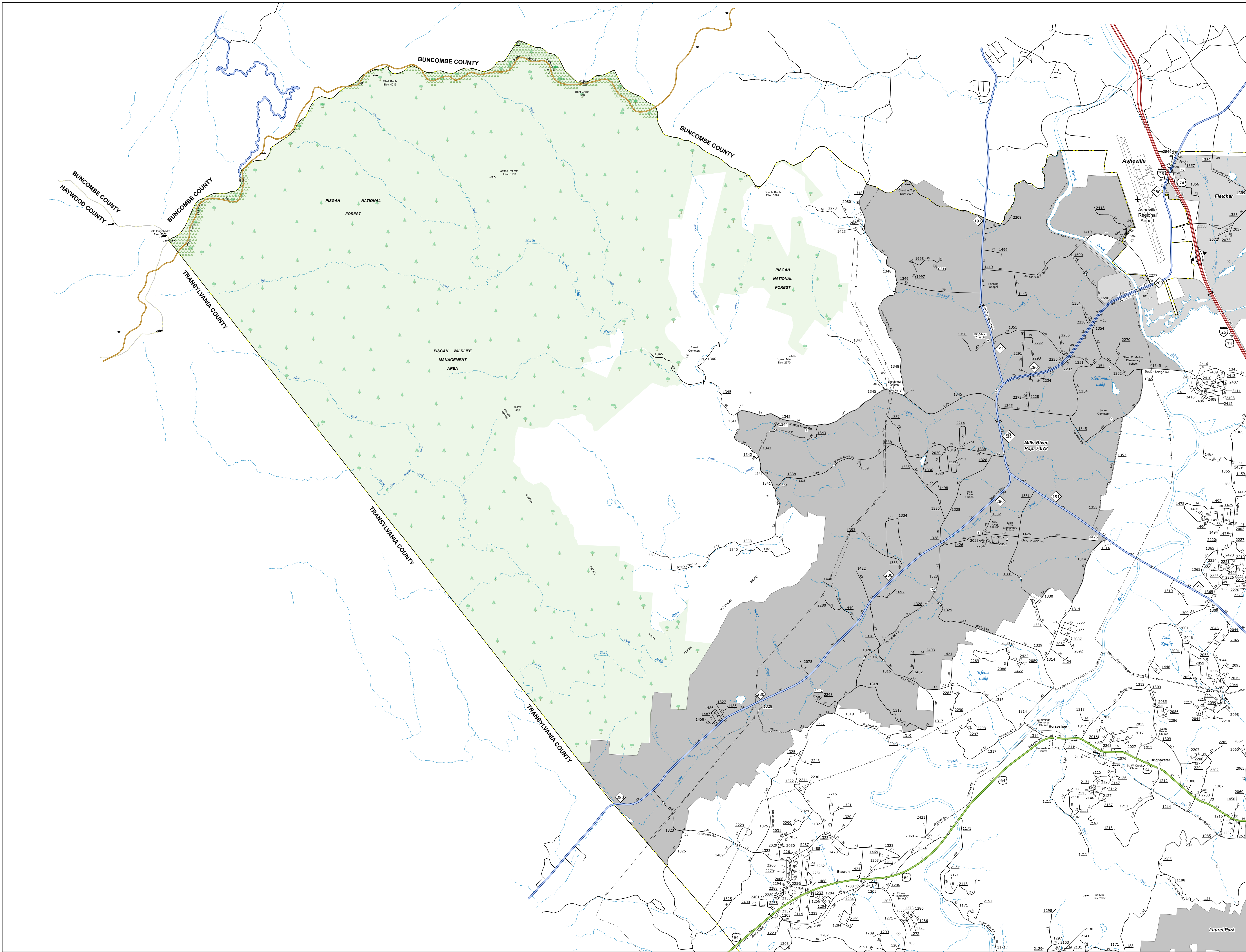
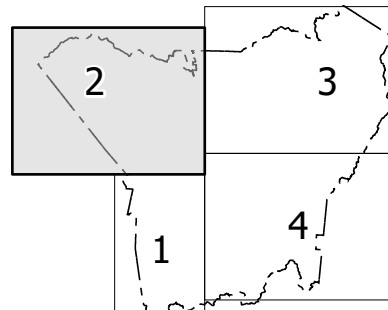


TERMS OF USE: The Mapping Section's goal is to provide the most accurate and current information possible. Map data is compiled from a variety of sources, including aerial photography, ground surveys, and other data. The data is provided as is, without warranty. The user assumes all liability for any errors or omissions in the map data. The user agrees to hold the Mapping Section harmless for any and all claims, damages, or liabilities, including reasonable attorneys' fees, arising from the use of this map data.

COPIES OF THIS MAP ARE AVAILABLE TO THE PUBLIC AT NO CHARGE. FOR MORE INFORMATION, CONTACT US AT: HENDERSON COUNTY, NORTH CAROLINA, 28740-1000, (704) 438-1000, OR WWW.HENDERSONCOUNTY-NC.GOV



Sheet Key



LEGEND

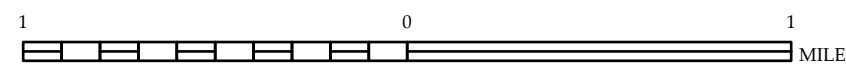
- INTERSTATE US
- US NUMBERED HIGHWAY
- US NUMBERED BI-CYCLE ROUTE
- US NUMBERED BI-CYCLE ROUTE
- INTERSTATE INTERCHANGE NUMBER
- SECONDARY ROAD NUMBER
- UTILITY LINE
- RAILROAD LINE
- RAILROAD STATION
- RAILROAD BRIDGE
- STATE LINE
- COUNTY LINE
- CITY LIMITS
- FERRY ROUTE AND RAMP
- NARROW CREEK OR STREAM
- WIDE RIVER OR CREEK
- RESERVOIR, POND OR LAKE W. ISLAND
- DAM OR DAM WITH LOCK
- WATERFALL
- SWAMP
- CORPUS
- COUNTY SEAT
- SCHOOL
- HOSPITAL
- COLEGE OR UNIVERSITY
- COAST GUARD STATION
- CHURCH
- CHURCH WITH CEMETERY
- CEMETERY
- PATROL STATION
- CORRECTION OR PENAL INSTITUTION
- QUARRY
- MINE OR PIT
- HOUSING GARAGE OR MAINT. YARD
- HIGHWAY DIV. OR DIST. OFFICE
- MILITARY POST
- WATER STATION
- FARMS
- HISTORICAL SITE
- POINTS OF INTEREST
- POST OFFICE
- STATE FOREST
- LIGHTHOUSE
- MOUNTAIN SUMMIT
- MOUNTAIN GAP
- OVERLOOK
- REST AREA
- VISITOR CTR REST AREA
- WELCOME CTR REST AREA
- AIRPORT
- MILITARY AIRPORT
- NATIONAL / STATE FOREST BOUNDARY
- WILDLIFE REFUGE
- NATIONAL / STATE PARK BOUNDARY
- GAME LANDS BOUNDARY
- MILITARY RESERVATION BOUNDARY
- INDIAN RESERVATION BOUNDARY



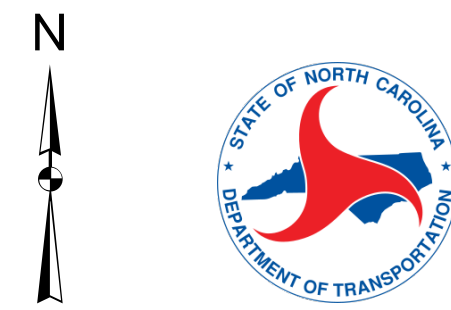
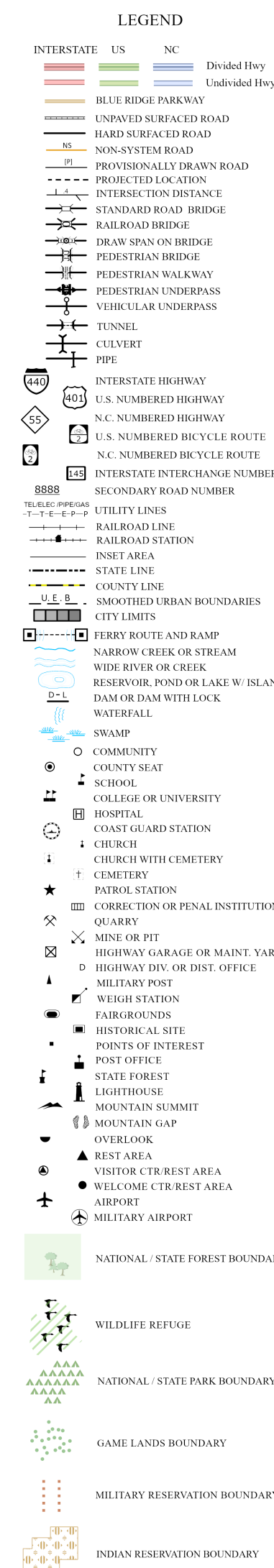
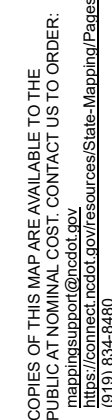
HENDERSON COUNTY NORTH CAROLINA

PREPARED BY THE
NORTH CAROLINA DEPARTMENT OF TRANSPORTATION
OPERATIONS PROGRAM MANAGEMENT UNIT - MAPPING SECTION
IN COOPERATION WITH THE
U.S. DEPARTMENT OF TRANSPORTATION
FEDERAL HIGHWAY ADMINISTRATION

SCALE



NORTH CAROLINA PLANE COORDINATE SYSTEM
LAMBERT CONFORMAL CONIC PROJECTION

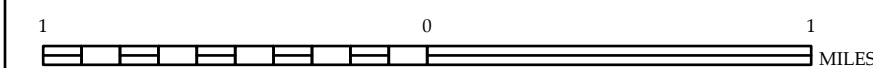


PREPARED BY THE
NORTH CAROLINA DEPARTMENT OF TRANSPORTATION
OPERATIONS PROGRAM MANAGEMENT UNIT - MAPPING SECTION
IN COOPERATION WITH THE
U.S. DEPARTMENT OF TRANSPORTATION
FEDERAL HIGHWAY ADMINISTRATION

SCALE

1 0 1

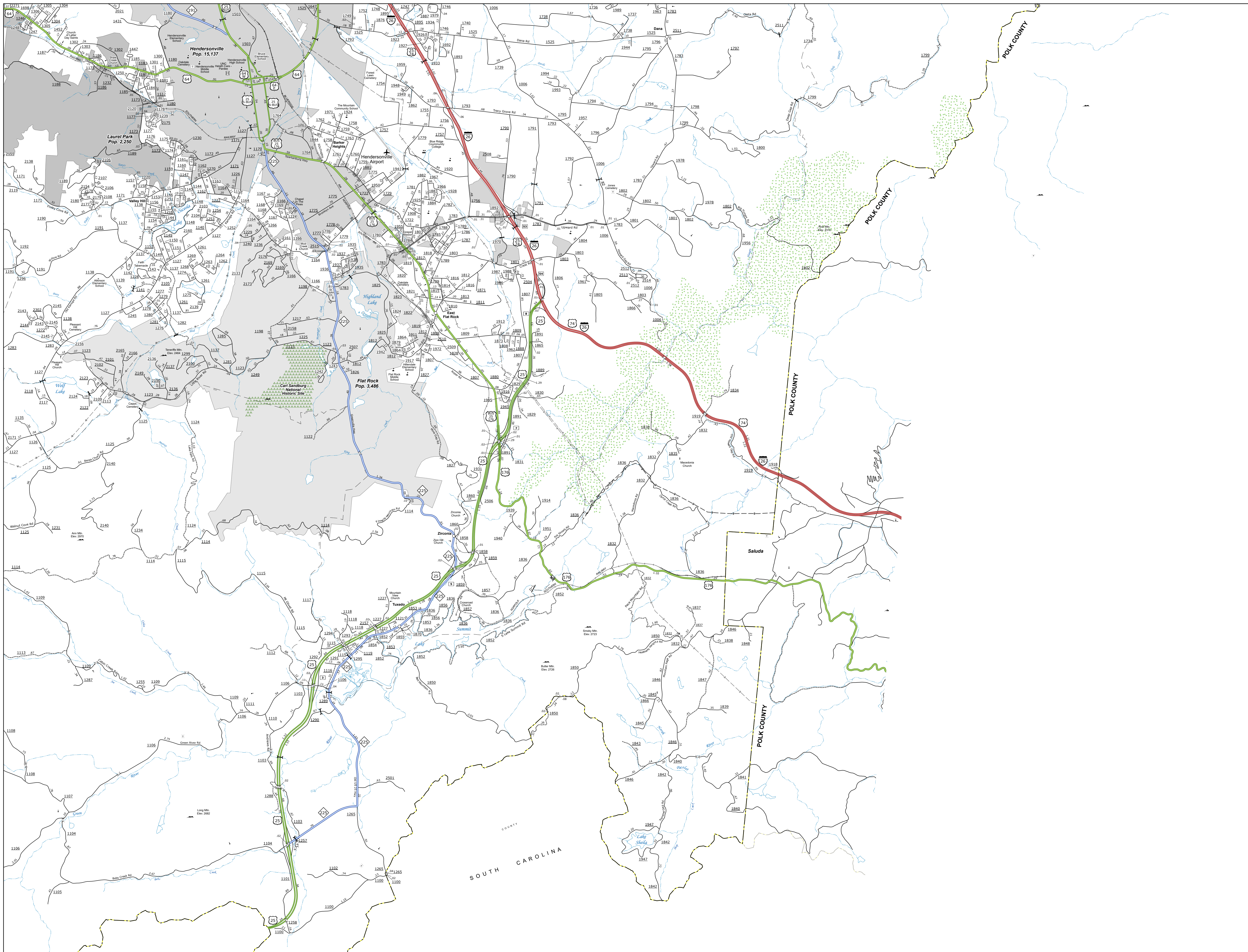
NORTH CAROLINA PLANE COORDINATE SYSTEM
LAMBERT CONFORMAL CONIC PROJECTION



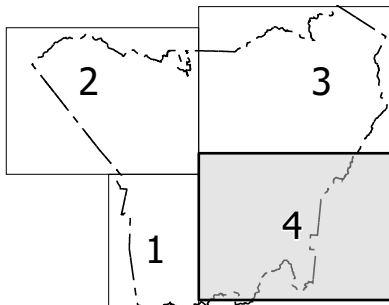
NORTH CAROLINA PLANE COORDINATE SYSTEM
LAMBERT CONFORMAL CONIC PROJECTION

TERMS OF USE: The Mapping Section's goal is to provide the most accurate and current information possible. Map data is compiled from a variety of sources, including aerial photography, ground surveys, and other reliable sources. The Mapping Section is not responsible for any errors or omissions that may appear on this map. The Mapping Section is not responsible for any damage or injury resulting from the use of this map. The Mapping Section is not responsible for any loss of property or other damages resulting from the use of this map. The Mapping Section is not responsible for any other damages resulting from the use of this map.

COPIES OF THIS MAP ARE AVAILABLE TO THE PUBLIC AT NO CHARGE. CONTACT US TO ORDER: HENDERSON COUNTY, NORTH CAROLINA, 1000 W. MAIN ST., HENDERSONVILLE, NC 28540, (704) 938-1234.



Sheet Key



LEGEND

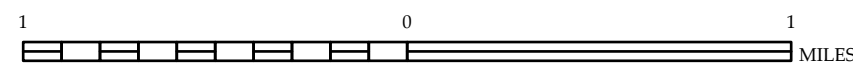
- INTERSTATE: US (thick red line), NC (thin red line), Divided Hwy (dashed line), Unimproved Hwy (dotted line)
- UNPAVED SUBSIDIZED ROAD (dashed line)
- HIGHWAY RIGHT-OF-WAY (dashed line)
- PROVISIONALLY DRAWN ROAD (dotted line)
- PROPOSED TRAIL OR CREEK (dashed line)
- INTERSECTION DISTANCE (dashed line)
- STANDARD ROAD BRIDGE (dashed line)
- RAILROAD BRIDGE (dashed line)
- DRAW SPAN ON BRIDGE (dashed line)
- PEDESTRIAN BRIDGE (dashed line)
- PEDESTRIAN WALKWAY (dashed line)
- VEHICLE UNDERPASS (dashed line)
- TUNNEL (dashed line)
- CULVERT (dashed line)
- PIV (dashed line)
- INTERSTATE HIGHWAY (thick red line)
- U.S. NUMBERED HIGHWAY (thick red line)
- N.C. NUMBERED HIGHWAY (thin red line)
- U.S. NUMBERED BICYCLE ROUTE (dashed line)
- N.C. NUMBERED BICYCLE ROUTE (dashed line)
- INTERSTATE INTERCHANGE NUMBER (dashed line)
- SECONDARY ROAD NUMBER (dashed line)
- UTILITY LINE (dashed line)
- RAILROAD LINE (dashed line)
- RAILROAD STATION (dashed line)
- INSURANCE AREA (dashed line)
- STATE LINE (dashed line)
- COUNTY LINE (dashed line)
- SMOOTHED URBAN BOUNDARIES (dashed line)
- CITY LIMITS (dashed line)
- FERRY ROUTE AND RAMP (dashed line)
- NARROW CREEK OR STREAM (dashed line)
- WIDE RIVER OR CREEK (dashed line)
- RESERVOIR, POND OR LAKE W/ ISLAND (dashed line)
- DAM OR DAM WITH LOCK (dashed line)
- WATERFALL (dashed line)
- SWAMP (dashed line)
- COMMUNITY (dashed line)
- COUNTY SEAT (dashed line)
- SCHOOL (dashed line)
- COLLEGE OR UNIVERSITY (dashed line)
- HOSPITAL (dashed line)
- COAST GUARD STATION (dashed line)
- CHURCH (dashed line)
- CHURCH WITH CEMETERY (dashed line)
- CEMETERY (dashed line)
- PATROL STATION (dashed line)
- CORRECTION OR PENAL INSTITUTION (dashed line)
- QUARRY (dashed line)
- MINE OR PIT (dashed line)
- HOUSING GARAGE OR MAINT. YARD (dashed line)
- HIGHWAY DIV. OR DIST. OFFICE (dashed line)
- MILITARY POST (dashed line)
- WATER STATION (dashed line)
- FARMS (dashed line)
- HISTORICAL SITE (dashed line)
- POINTS OF INTEREST (dashed line)
- POST OFFICE (dashed line)
- STATE FOREST (dashed line)
- LIGHTHOUSE (dashed line)
- MOUNTAIN SUMMIT (dashed line)
- MOUNTAIN GAP (dashed line)
- OVERLOOK (dashed line)
- REST AREA (dashed line)
- VISITOR CENTER REST AREA (dashed line)
- WELCOME CENTER REST AREA (dashed line)
- AIRPORT (dashed line)
- MILITARY AIRPORT (dashed line)
- NATIONAL / STATE FOREST BOUNDARY (dashed line)
- WILDLIFE REFUGE (dashed line)
- NATIONAL / STATE PARK BOUNDARY (dashed line)
- GAME LANDS BOUNDARY (dashed line)
- MILITARY RESERVATION BOUNDARY (dashed line)
- INDIAN RESERVATION BOUNDARY (dashed line)



HENDERSON COUNTY
NORTH CAROLINA

PREPARED BY THE
NORTH CAROLINA DEPARTMENT OF TRANSPORTATION
OPERATIONS PROGRAM MANAGEMENT UNIT - MAPPING SECTION
IN COOPERATION WITH THE
U.S. DEPARTMENT OF TRANSPORTATION
FEDERAL HIGHWAY ADMINISTRATION

SCALE



NORTH CAROLINA PLANE COORDINATE SYSTEM
LAMBERT CONFORMAL CONIC PROJECTION