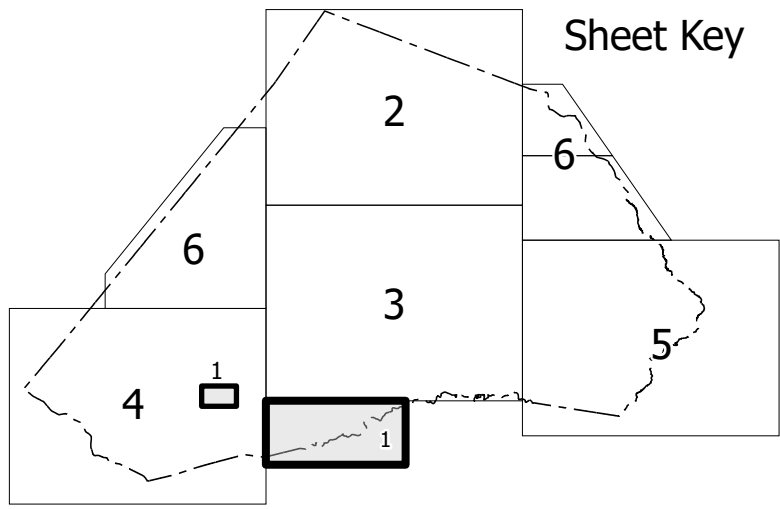
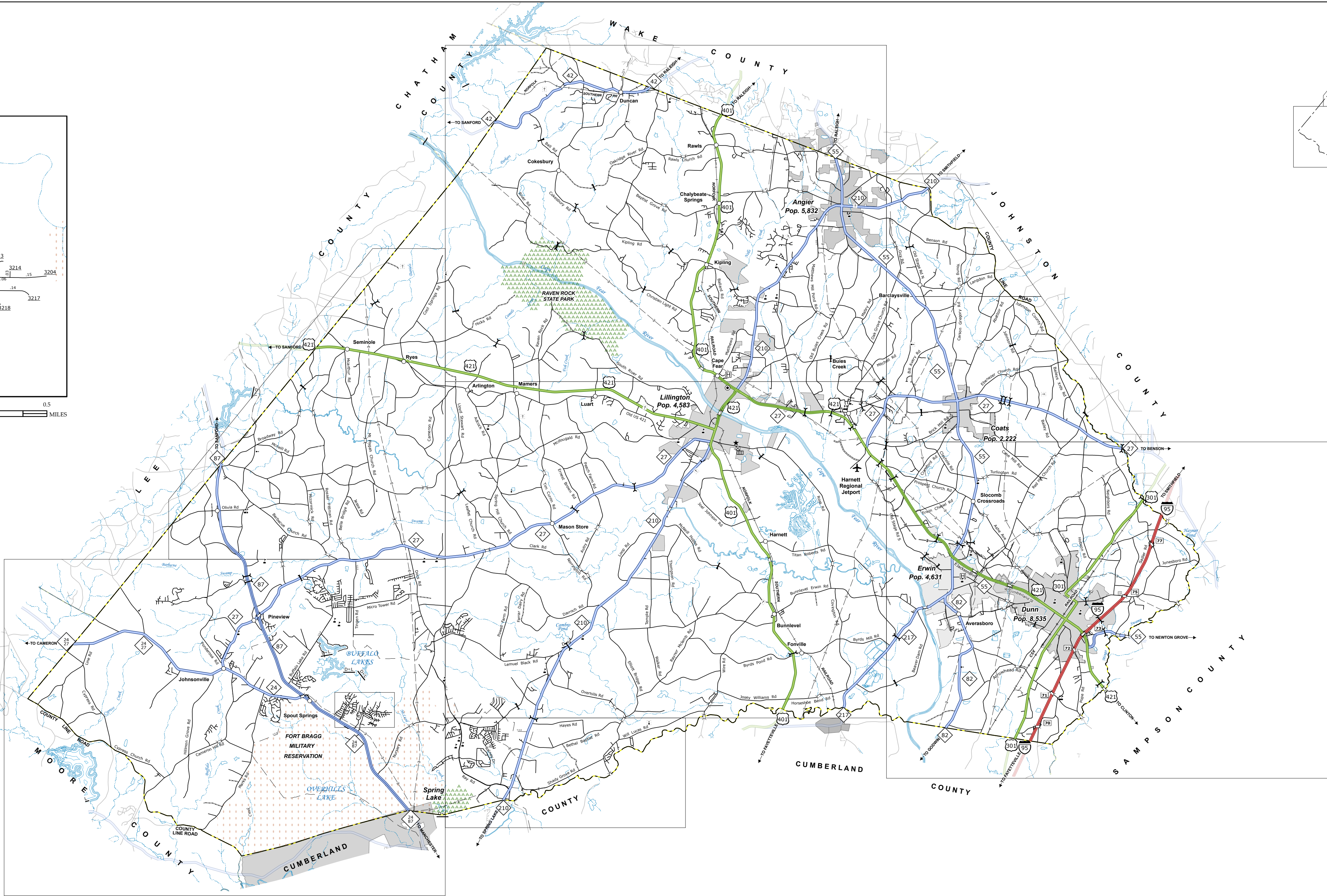
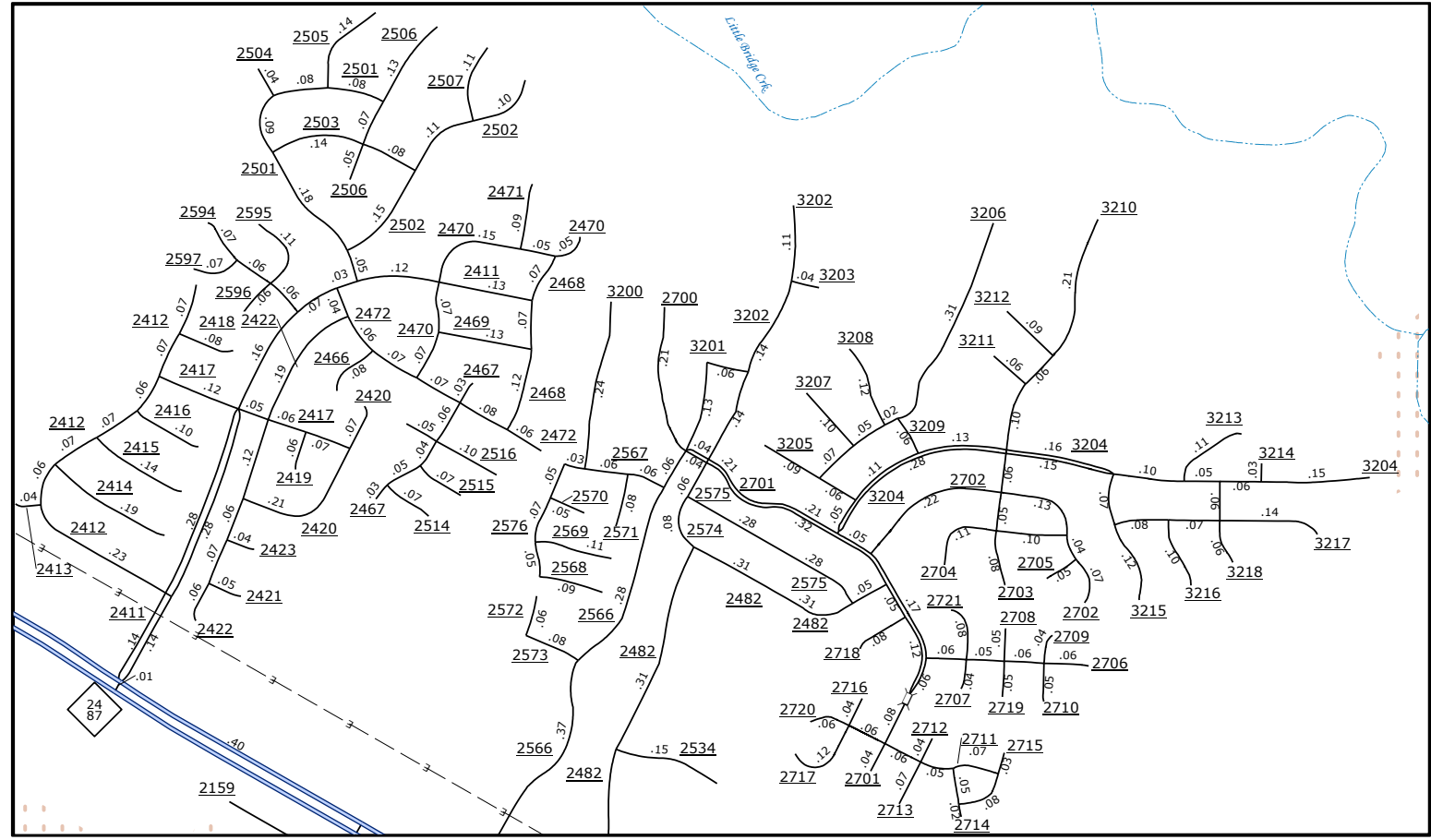
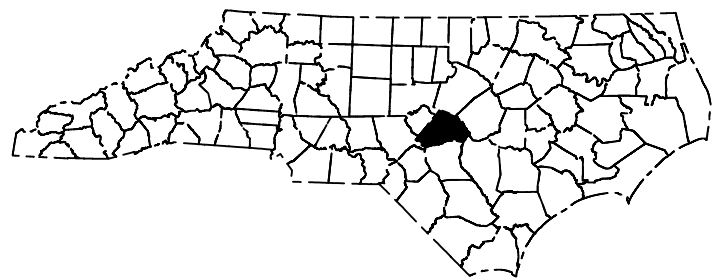
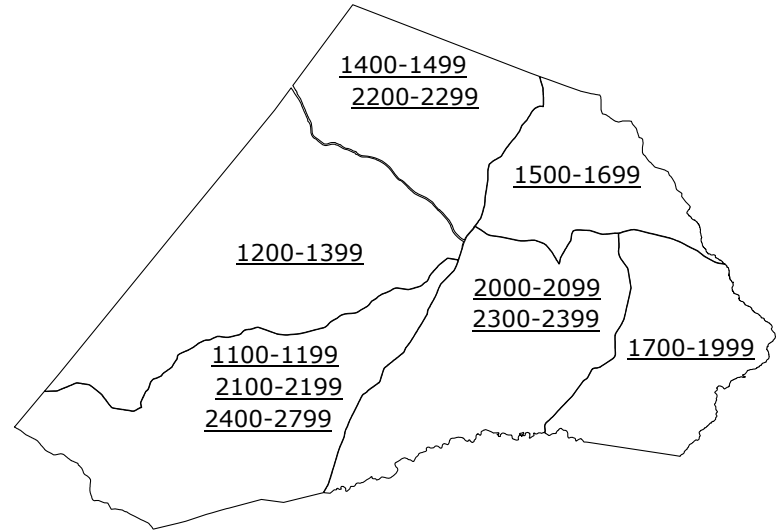
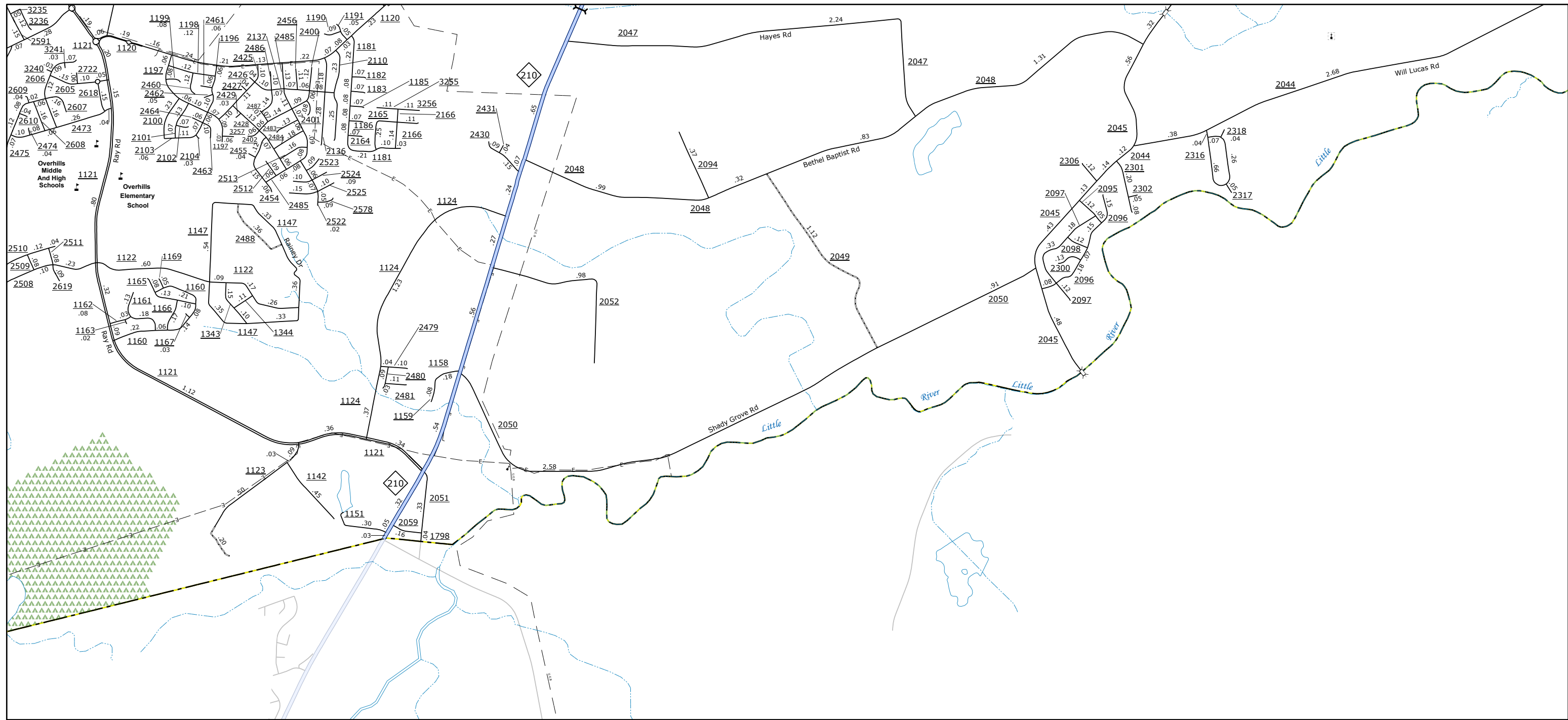


TERMS OF USE: The Mapping Section's goal is to provide the most accurate and current information possible. Map data is compiled from numerous sources with varying dates of publication and may contain inaccuracies. As a result, the accuracy, currency, and completeness of this information cannot be guaranteed. The information shown on this map was last updated in January 2025.

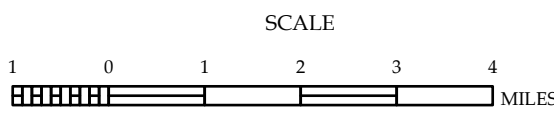


- LEGEND**
- INTERSTATE US NC
 - Divided Hwy
 - Unpaved Surfaced Road
 - Hard Surfaced Road
 - Non-System Road
 - Provisionally Drawn Road
 - Projected Location
 - Intersection Distance
 - Standard Road Bridge
 - Railroad Bridge
 - Draw Span on Bridge
 - Pedestrian Bridge
 - Pedestrian Walkway
 - Pedestrian Underpass
 - Vehicle Underpass
 - Tunnel
 - Culvert
 - Pipe
 - Interstate Highway
 - U.S. Numbered Highway
 - N.C. Numbered Highway
 - U.S. Numbered Bicycle Route
 - N.C. Numbered Bicycle Route
 - Interstate Interchange Number
 - Secondary Road Number
 - Utility Lines
 - Railroad Line
 - Railroad Station
 - Inset Area
 - State Line
 - County Line
 - Smoothed Urban Boundaries
 - City Limits
 - Ferry Route and Ramp
 - Narrow Creek or Stream
 - Wide River or Creek
 - Reservoir, Pond or Lake w/ Island
 - Dam or Dam with Lock
 - Waterfall
 - Swamp
 - Community
 - County Seat
 - School
 - College or University
 - Hospital
 - Coast Guard Station
 - Church
 - Church with Cemetery
 - Cemetery
 - Patrol Station
 - Correction or Penal Institution
 - Quarry
 - Mine or Pit
 - Highway Garage or Maint. Yard
 - Highway Div. or Dist. Office
 - Military Post
 - Weight Station
 - Fairgrounds
 - Historical Site
 - Points of Interest
 - Post Office
 - State Forest
 - Lighthouse
 - Mountain Summit
 - Mountain Gap
 - Overlook
 - Rest Area
 - Visitor Ctr/Rest Area
 - Welcome Ctr/Rest Area
 - Airport
 - Military Airport
 - National / State Forest Boundary
 - Wildlife Refuge
 - National / State Park Boundary
 - Game Lands Boundary
 - Military Reservation Boundary
 - Indian Reservation Boundary



HARNETT COUNTY NORTH CAROLINA

PREPARED BY THE
NORTH CAROLINA DEPARTMENT OF TRANSPORTATION
OPERATIONS PROGRAM MANAGEMENT UNIT - MAPPING SECTION
IN COOPERATION WITH THE
U.S. DEPARTMENT OF TRANSPORTATION
FEDERAL HIGHWAY ADMINISTRATION

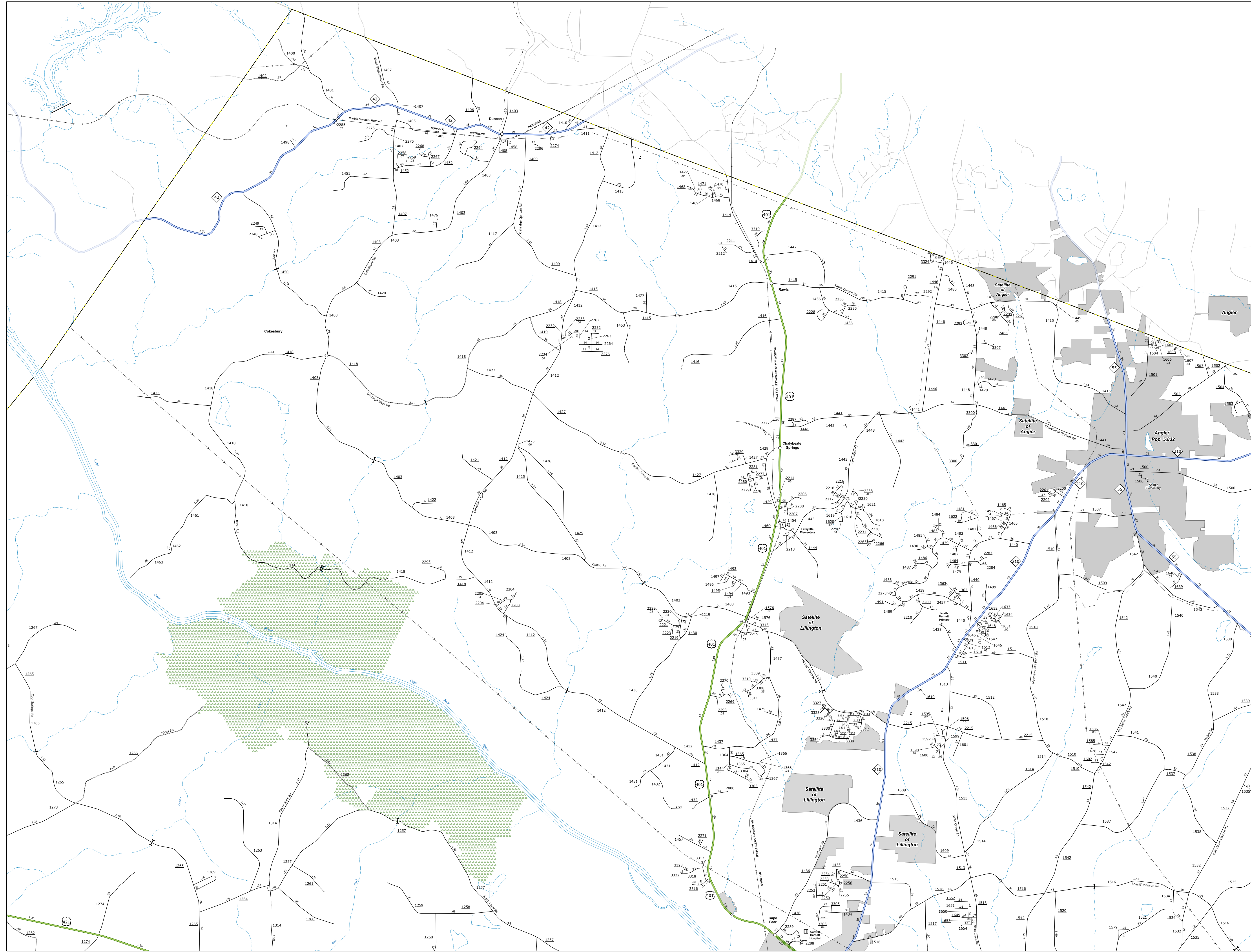


NORTH CAROLINA PLANE COORDINATE SYSTEM
LAMBERT CONFORMAL CONIC PROJECTION

COPIES OF THIS MAP ARE AVAILABLE TO THE
PUBLIC AT NO CHARGE. CONTACT US TO ORDER.
HARNETT COUNTY, NORTH CAROLINA
DIVISION 6, DISTRICT 2

TERMS OF USE: The Mapping Section's goal is to provide the most accurate and current information available. Map data is compiled from numerous sources with varying levels of publication and may contain inaccuracies. As a result, the accuracy, currency, and completeness of this information cannot be guaranteed. The information shown on this map was last updated in January 2025. For official copies of this map or additional map products, visit <https://www.ncdot.gov/transportation/operations-program-management-unit-mapping-section>.

COPIES OF THIS MAP ARE AVAILABLE TO THE PUBLIC AT NO CHARGE. CONTACT US TO ORDER. maprequests@ncdot.gov or call 1-800-368-6848.



Sheet Key

LEGEND

- INTERSTATE
- US
- NC
- Divided Hwy
- Undivided Hwy
- BLUE RIDGE PARKWAY
- UNPAVED SURFACED ROAD
- HARD SURFACED ROAD
- NON-SYSTEM ROAD
- PROVISIONALLY DRAWN ROAD
- PROTECTED LOCATION
- INTERSECTION DISTANCE
- STANDARD ROAD BRIDGE
- RAILROAD BRIDGE
- DRAW SPAN ON BRIDGE
- PEDESTRIAN BRIDGE
- PEDESTRIAN WALKWAY
- PEDESTRIAN UNDERPASS
- VEHICULAR UNDERPASS
- TUNNEL
- CULVERT
- PIPE
- INTERSTATE HIGHWAY
- U.S. NUMBERED HIGHWAY
- N.C. NUMBERED HIGHWAY
- U.S. NUMBERED BICYCLE ROUTE
- N.C. NUMBERED BICYCLE ROUTE
- INTERSTATE INTERCHANGE NUMBER
- SECONDARY ROAD NUMBER
- 8888
- UTILITY LINES
- RAILROAD LINE
- RAILROAD STATION
- INSET AREA
- STATE LINE
- COUNTY LINE
- SMOOTHED URBAN BOUNDARIES
- CITY LIMITS
- FERRY ROUTE AND RAMP
- NARROW CREEK OR STREAM
- WIDE RIVER OR CREEK
- RESERVOIR, POND OR LAKE W/ ISLAND
- DAM OR DAM WITH LOCK
- WATERFALL
- SWAMP
- COMMUNITY
- COUNTY SEAT
- SCHOOL
- COLLEGE OR UNIVERSITY
- HOSPITAL
- COAST GUARD STATION
- CHURCH
- CHURCH WITH CEMETERY
- CEMETERY
- PATROL STATION
- QUARRY
- MINE OR PIT
- HIGHWAY GARAGE OR MAINT. YARD
- HIGHWAY DIV. OR DIST. OFFICE
- MILITARY POST
- WEIGH STATION
- FAIRGROUNDS
- HISTORICAL SITE
- POINTS OF INTEREST
- POST OFFICE
- STATE FOREST
- LIGHTHOUSE
- MOUNTAIN SUMMIT
- MOUNTAIN GAP
- OVERLOOK
- REST AREA
- REST OR CTR REST AREA
- WELCOME CTR REST AREA
- AIRPORT
- MILITARY AIRPORT
- NATIONAL / STATE FOREST BOUNDARY
- WILDLIFE REFUGE
- NATIONAL / STATE PARK BOUNDARY
- GAME LANDS BOUNDARY
- MILITARY RESERVATION BOUNDARY
- INDIAN RESERVATION BOUNDARY

N

1 0 1 MILES

NORTH CAROLINA PLANE COORDINATE SYSTEM
LAMBERT CONFORMAL CONIC PROJECTION

HARNETT COUNTY
NORTH CAROLINA

PREPARED BY THE
NORTH CAROLINA DEPARTMENT OF TRANSPORTATION
OPERATIONS PROGRAM MANAGEMENT UNIT - MAPPING SECTION
IN COOPERATION WITH THE
U.S. DEPARTMENT OF TRANSPORTATION
FEDERAL HIGHWAY ADMINISTRATION

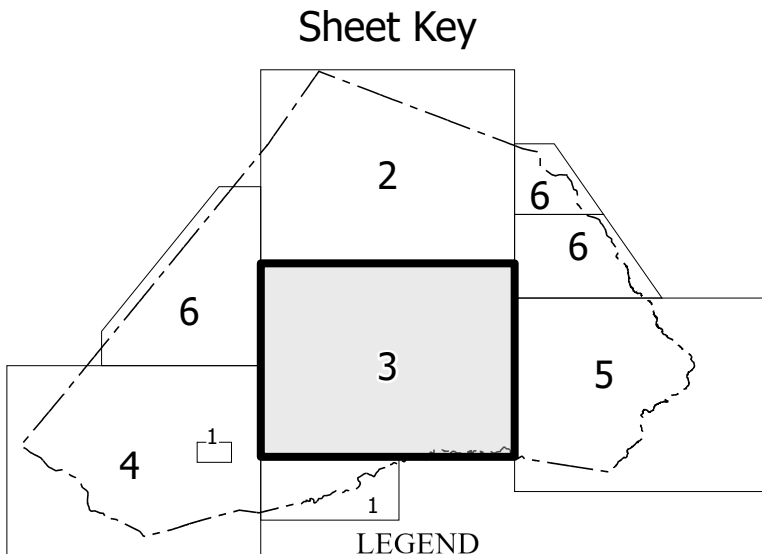
SCALE

DIVISION 6 DISTRICT 2 HARNETT COUNTY NORTH CAROLINA FIPS 085

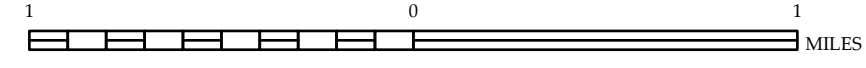
SHEET 2 of 6

TERMS OF USE: The Mapping Section's goal is to provide the most accurate and current information possible. Map data is compiled from numerous sources with varying dates of publication and may contain inaccuracies. While the accuracy, currency, and completeness of the information cannot be guaranteed, the information shown on this map was last updated in January 2025.

COPIES OF THIS MAP ARE AVAILABLE TO THE PUBLIC AT NO CHARGE. CONTACT US TO ORDER. maps@ncdot.gov or 1-800-368-3346. <https://www.ncdot.gov/Information/About/State/Map/MapData.aspx>



- LEGEND
- INTERSTATE US NC Divided Hwy Undivided Hwy
 - BLUE RIDGE PARKWAY
 - UNPAVED SURFACED ROAD
 - HARD SURFACED ROAD
 - NON-SYSTEM ROAD
 - PROVISIONALLY DRAWN ROAD
 - PROTECTED LOCATION
 - INTERSECTION DISTANCE
 - STANDARD ROAD BRIDGE
 - RAILROAD BRIDGE
 - DRAW SPAN ON BRIDGE
 - PEDESTRIAN BRIDGE
 - PEDESTRIAN WALKWAY
 - PEDESTRIAN UNDERPASS
 - VEHICULAR UNDERPASS
 - TUNNEL
 - CULVERT
 - PIPE
 - INTERSTATE HIGHWAY
 - U.S. NUMBERED HIGHWAY
 - N.C. NUMBERED HIGHWAY
 - U.S. NUMBERED BICYCLE ROUTE
 - N.C. NUMBERED BICYCLE ROUTE
 - INTERSTATE INTERCHANGE NUMBER
 - SECONDARY ROAD NUMBER
 - UTILITY LINES
 - RAILROAD LINE
 - RAILROAD STATION
 - INSET AREA
 - STATE LINE
 - COUNTY LINE
 - SMOOTHED URBAN BOUNDARIES
 - CITY LIMITS
 - FERRY ROUTE AND RAMP
 - NARROW CREEK OR STREAM
 - WIDE RIVER OR CREEK
 - RESERVOIR, POND OR LAKE W/ ISLAND
 - DAM OR DAM WITH LOCK
 - WATERFALL
 - SWAMP
 - COMMUNITY
 - COUNTY SEAT
 - SCHOOL
 - COLLEGE OR UNIVERSITY
 - HOSPITAL
 - COAST GUARD STATION
 - CHURCH
 - CHURCH WITH CEMETERY
 - CEMETERY
 - PATROL STATION
 - QUARRY
 - MINE OR PIT
 - HIGHWAY GARAGE OR MAINT. YARD
 - HIGHWAY DIV. OR DIST. OFFICE
 - MILITARY POST
 - WEIGH STATION
 - FAIRGROUNDS
 - HISTORICAL SITE
 - POINTS OF INTEREST
 - POST OFFICE
 - STATE FOREST
 - LIGHTHOUSE
 - MOUNTAIN SUMMIT
 - MOUNTAIN GAP
 - OVERLOOK
 - REST AREA
 - DISFTR CTR/REST AREA
 - WELCOM CTR/REST AREA
 - AIRPORT
 - MILITARY AIRPORT
 - NATIONAL / STATE FOREST BOUNDARY
 - WILDLIFE REFUGE
 - NATIONAL / STATE PARK BOUNDARY
 - GAME LANDS BOUNDARY
 - MILITARY RESERVATION BOUNDARY
 - INDIAN RESERVATION BOUNDARY

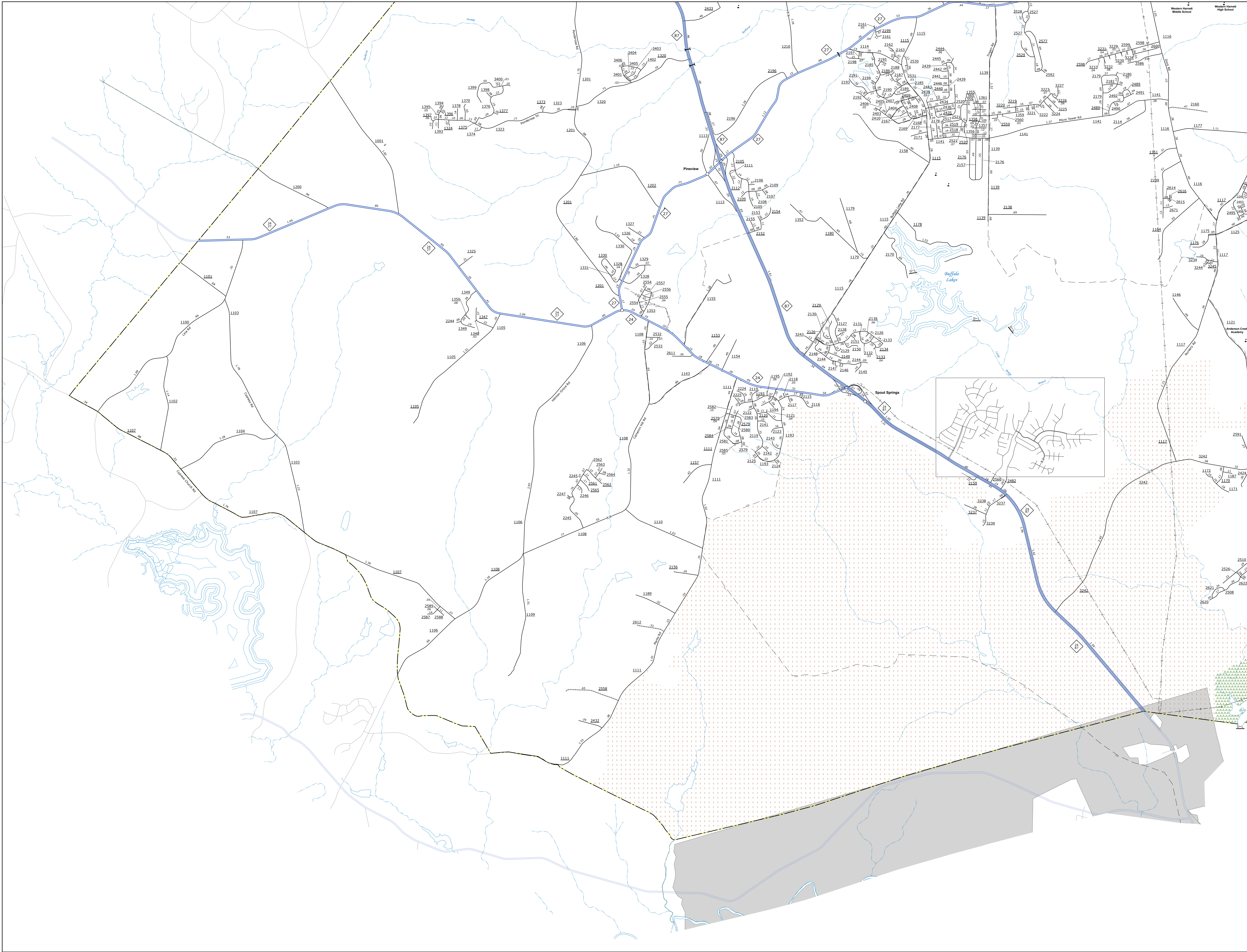


HARNETT COUNTY NORTH CAROLINA

PREPARED BY THE
NORTH CAROLINA DEPARTMENT OF TRANSPORTATION
OPERATIONS PROGRAM MANAGEMENT UNIT - MAPPING SECTION
IN COOPERATION WITH THE
U.S. DEPARTMENT OF TRANSPORTATION
FEDERAL HIGHWAY ADMINISTRATION
SCALE

NORTH CAROLINA PLANE COORDINATE SYSTEM
LAMBERT CONFORMAL CONIC PROJECTION

TERMS OF USE: The Mapping Section's goal is to provide the most accurate and current information possible. Map data is compiled from numerous sources with varying levels of publication and may contain inaccuracies. As a result, the accuracy, currency, and completeness of this information cannot be guaranteed. The information shown on this map was last updated in January 2025. For more information, visit <https://www.ncdot.gov/Information/About/About-us/Pages/About-us.aspx>



Sheet Key

LEGEND

INTERSTATE	US	NC	Divided Hwy
UNPAVED SURFACED ROAD	HARD SURFACED ROAD	NON-SYSTEM ROAD	PROVISIONALLY DRAWN ROAD
PROTECTED LOCATION	INTERSECTION DISTANCE	STANDARD ROAD BRIDGE	RAILROAD BRIDGE
DRAW SPAN ON BRIDGE	PEDESTRIAN BRIDGE	PEDESTRIAN WALKWAY	PEDESTRIAN UNDERPASS
VEHICULAR UNDERPASS	TUNNEL	CULVERT	PIPE
INTERSTATE HIGHWAY	U.S. NUMBERED HIGHWAY	N.C. NUMBERED HIGHWAY	U.S. NUMBERED BICYCLE ROUTE
N.C. NUMBERED BICYCLE ROUTE	INTERSTATE INTERCHANGE NUMBER	SECONDARY ROAD NUMBER	UTILITY LINES
RAILROAD LINE	RAILROAD STATION	INSET AREA	STATE LINE
COUNTY LINE	SMOOTHED URBAN BOUNDARIES	CITY LIMITS	FERRY ROUTE AND RAMP
NARROW CREEK OR STREAM	WIDE RIVER OR CREEK	RESERVOIR, POND OR LAKE W/ ISLAND	DAM OR DAM WITH LOCK
WATERFALL	SWAMP	COMMUNITY	COUNTY SEAT
SCHOOL	COLLEGE OR UNIVERSITY	HOSPITAL	COAST GUARD STATION
CHURCH	CHURCH WITH CEMETERY	CEMETERY	PATROL STATION
QUARRY	MINE OR PIT	HIGHWAY GARAGE OR MAINT. YARD	HIGHWAY DIV. OR DIST. OFFICE
MILITARY POST	WEIGH STATION	FAIRGROUNDS	HISTORICAL SITE
POINTS OF INTEREST	POST OFFICE	STATE FOREST	LIGHTHOUSE
MOUNTAIN SUMMIT	MOUNTAIN GAP	OVERLOOK	REST AREA
REST FOR CTR/REST AREA	WELCOME CTR/REST AREA	AIRPORT	MILITARY AIRPORT
NATIONAL / STATE FOREST BOUNDARY	WILDLIFE REFUGE	NATIONAL / STATE PARK BOUNDARY	GAME LANDS BOUNDARY
MILITARY RESERVATION BOUNDARY	INDIAN RESERVATION BOUNDARY		

HARNETT COUNTY NORTH CAROLINA

PREPARED BY THE
NORTH CAROLINA DEPARTMENT OF TRANSPORTATION
OPERATIONS PROGRAM MANAGEMENT UNIT - MAPPING SECTION
IN COOPERATION WITH THE
U.S. DEPARTMENT OF TRANSPORTATION
FEDERAL HIGHWAY ADMINISTRATION

SCALE

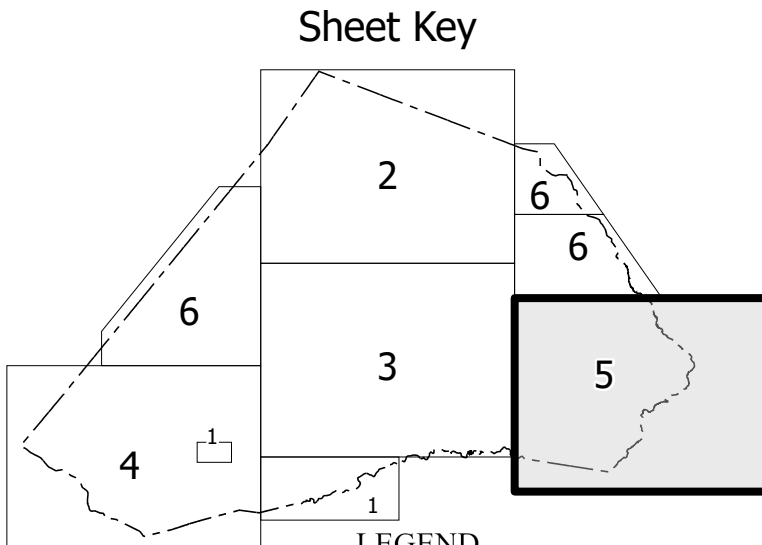
NORTH CAROLINA PLANE COORDINATE SYSTEM
LAMBERT CONFORMAL CONIC PROJECTION

SHEET 4 of 6

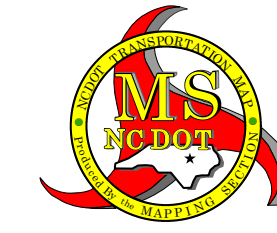
COPIES OF THIS MAP ARE AVAILABLE TO THE PUBLIC AT NO CHARGE. CONTACT US TO ORDER.
MAILING ADDRESS: HARNETT COUNTY, NC 28540
PHONE: (919) 440-1440

TERMS OF USE: The Mapping Section's goal is to provide the most accurate and current information possible. Map data is compiled from numerous sources with varying dates of publication and may contain inaccuracies. As a result, the accuracy, currency, and completeness of this information cannot be guaranteed. The information shown on this map was last updated in January 2025. For official copies of this map or additional map products, visit <https://www.ncdot.gov/Map-Data/Products/Maps.aspx>.

COPIES OF THIS MAP ARE AVAILABLE TO THE PUBLIC AT NO CHARGE. CONTACT US TO ORDER: MapData@ncdot.gov or [919-763-2800](tel:9197632800). Please specify the map title and sheet number.



- LEGEND**
- INTERSTATE
 - US
 - NC
 - Divided Hwy
 - Undivided Hwy
 - BLUE RIDGE PARKWAY
 - UNPAVED SURFACED ROAD
 - HARD SURFACED ROAD
 - NON-SYSTEM ROAD
 - PROVISIONALLY DRAWN ROAD
 - PROTECTED LOCATION
 - INTERSECTION DISTANCE
 - STANDARD ROAD BRIDGE
 - RAILROAD BRIDGE
 - DRAW SPAN ON BRIDGE
 - PEDESTRIAN BRIDGE
 - PEDESTRIAN WALKWAY
 - PEDESTRIAN UNDERPASS
 - VEHICULAR UNDERPASS
 - TUNNEL
 - CULVERT
 - PIPE
 - INTERSTATE HIGHWAY
 - U.S. NUMBERED HIGHWAY
 - N.C. NUMBERED HIGHWAY
 - U.S. NUMBERED BICYCLE ROUTE
 - N.C. NUMBERED BICYCLE ROUTE
 - INTERSTATE INTERCHANGE NUMBER
 - SECONDARY ROAD NUMBER
 - UTILITY LINES
 - RAILROAD LINE
 - RAILROAD STATION
 - INSET AREA
 - STATE LINE
 - COUNTY LINE
 - SMOOTHED URBAN BOUNDARIES
 - CITY LIMITS
 - FERRY ROUTE AND RAMP
 - NARROW CREEK OR STREAM
 - WIDE RIVER OR CREEK
 - RESERVOIR, POND OR LAKE W/ ISLAND
 - DAM OR DAM WITH LOCK
 - WATERFALL
 - SWAMP
 - COMMUNITY
 - COUNTY SEAT
 - SCHOOL
 - COLLEGE OR UNIVERSITY
 - HOSPITAL
 - COAST GUARD STATION
 - CHURCH
 - CHURCH WITH CEMETERY
 - CEMETERY
 - PATROL STATION
 - CORRECTION OR PENAL INSTITUTION
 - QUARRY
 - MINE OR PIT
 - HIGHWAY GARAGE OR MAINT. YARD
 - HIGHWAY DIV. OR DIST. OFFICE
 - MILITARY POST
 - WEIGH STATION
 - FAIRGROUNDS
 - HISTORICAL SITE
 - POINTS OF INTEREST
 - POST OFFICE
 - STATE FOREST
 - LIGHTHOUSE
 - MOUNTAIN SUMMIT
 - MOUNTAIN GAP
 - OVERLOOK
 - REST AREA
 - DISFOT CTR/REST AREA
 - WELCOME CTR/REST AREA
 - AIRPORT
 - MILITARY AIRPORT
 - NATIONAL / STATE FOREST BOUNDARY
 - WILDLIFE REFUGE
 - NATIONAL / STATE PARK BOUNDARY
 - GAME LANDS BOUNDARY
 - MILITARY RESERVATION BOUNDARY
 - INDIAN RESERVATION BOUNDARY



HARNETT COUNTY NORTH CAROLINA

PREPARED BY THE
NORTH CAROLINA DEPARTMENT OF TRANSPORTATION
OPERATIONS PROGRAM MANAGEMENT UNIT - MAPPING SECTION
IN COOPERATION WITH THE
U.S. DEPARTMENT OF TRANSPORTATION
FEDERAL HIGHWAY ADMINISTRATION
SCALE

