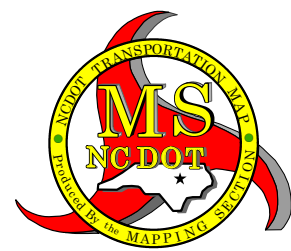
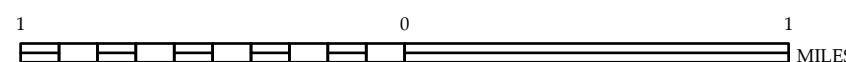
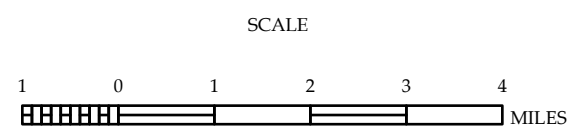


- [illegible]



PREPARED BY THE
NORTH CAROLINA DEPARTMENT OF TRANSPORTATION
OPERATIONS PROGRAM MANAGEMENT UNIT - MAPPING SECTION
IN COOPERATION WITH THE
U.S. DEPARTMENT OF TRANSPORTATION
FEDERAL HIGHWAY ADMINISTRATION

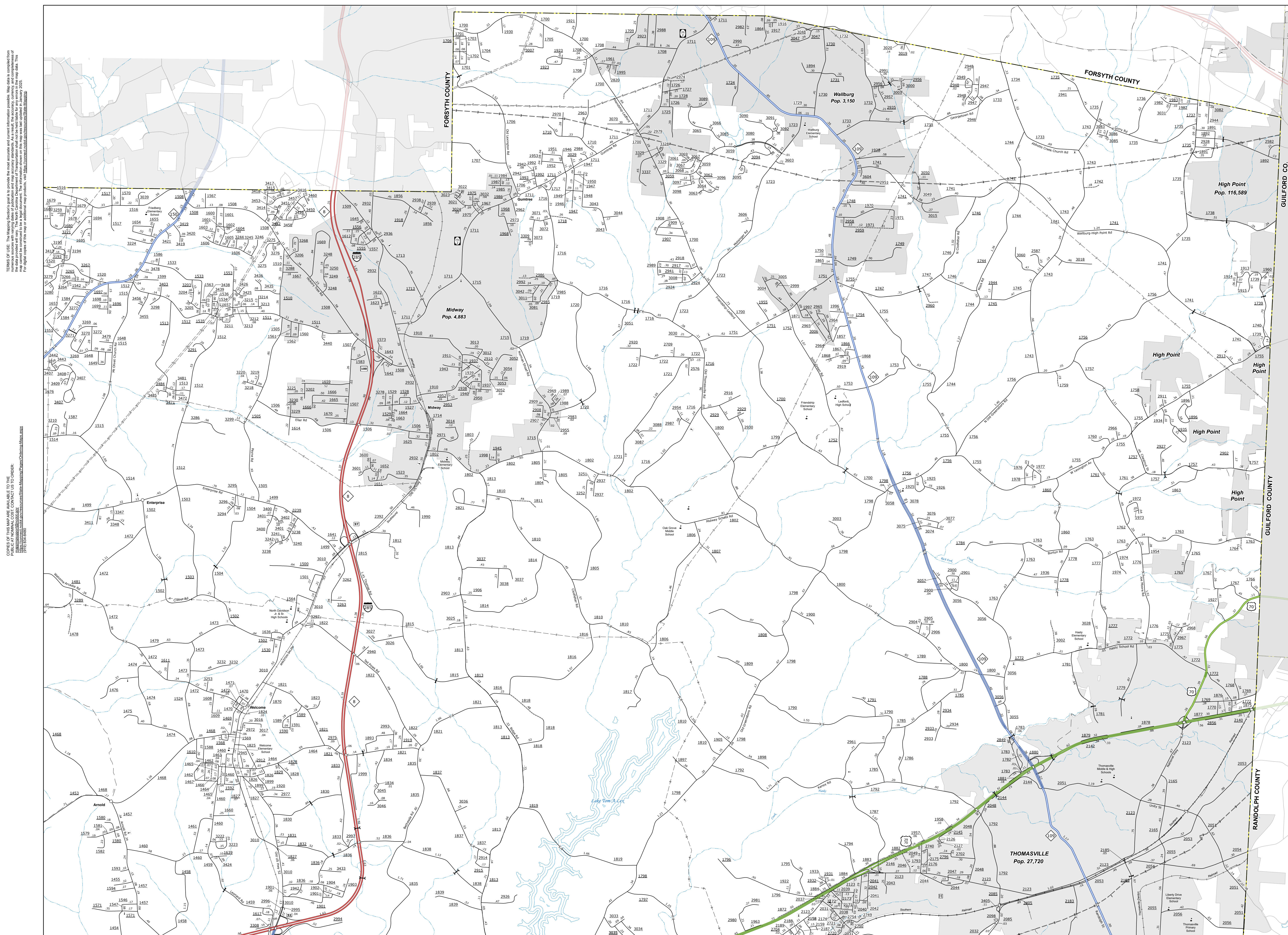
NORTH CAROLINA PLANE COORDINATE SYSTEM
LAMBERT CONFORMAL CONIC PROJECTION

SHEET 1 OF 6

COPIES OF THIS MAP ARE AVAILABLE TO THE
PUBLIC AT NOMINAL COST. CONTACT US TO ORDER:
mappingsupport@ncdot.gov
<https://connect.ncdot.gov/resources/State-Mapping/Pages/Ordering-Maps.aspx>
(919) 834-8480

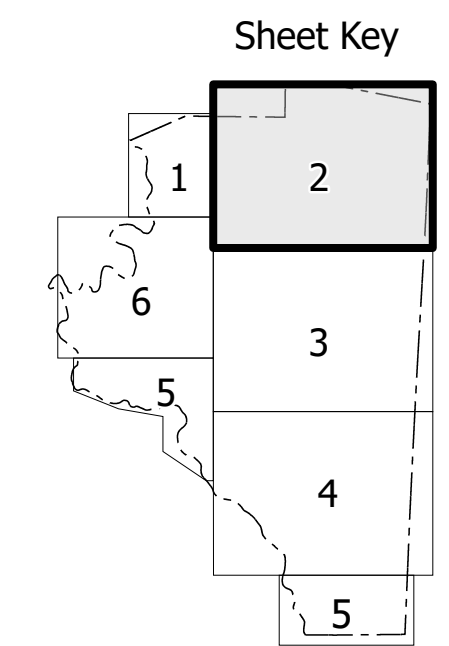
TERMS OF USE: The Mapping Section's goal is to provide the most accurate and current information possible. Map data is compiled from numerous sources with varying dates of publication and map accuracy standards. As a result, the accuracy, currency, and completeness of the data provided will vary. The North Carolina Department of Transportation shall not be held liable for any errors in the map data. This map cannot be construed to be a legal document. The information shown on this map was last updated in January 2025. For digital copies of this map or additional map products, visit <https://connect.ncdot.gov/resources/State-Mapping>.

DIVISION 9 DISTRICT 1 **DAVIDSON COUNTY** NORTH CAROLINA FIPS 05

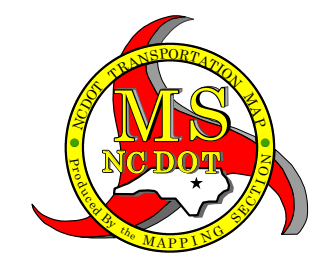
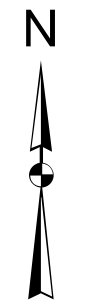
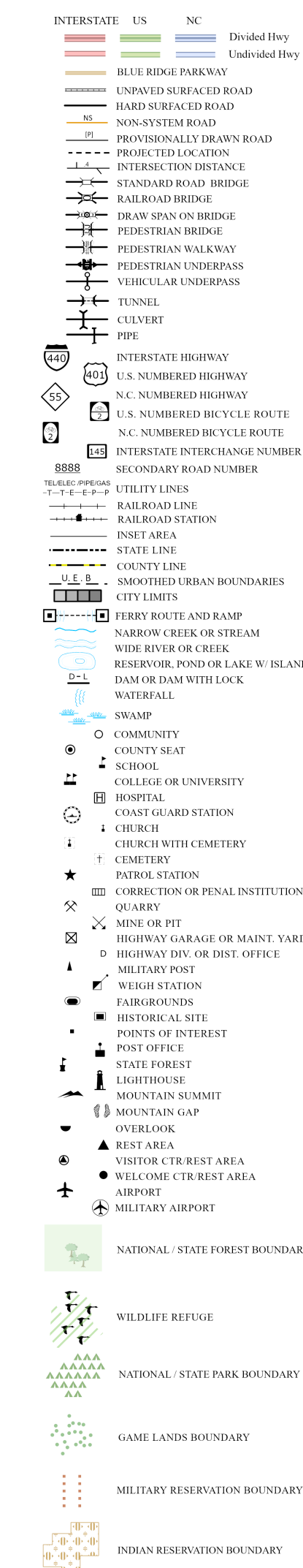


TERMS OF USE: The Mapping Section's goal is to provide the most accurate and current information possible. Map data is compiled from numerous sources with varying dates of publication and map accuracy standards. As a result, the accuracy, currency, and completeness of the data provided will vary. The North Carolina Department of Transportation shall not be held liable for any errors in the map data. This map cannot be continued to be a legal document. The information shown on this map was last updated in January 2025.

COPIES OF THIS MAP ARE AVAILABLE TO THE PUBLIC AT NOMINAL COST. CONTACT US TO ORDER:
mapinfo@support@ndot.gov
<http://dotnet.ndot.gov/resources/State-Mapping/Pages/Ordering-Maps.aspx>

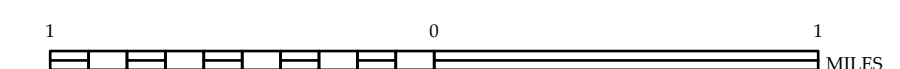


Sheet Key



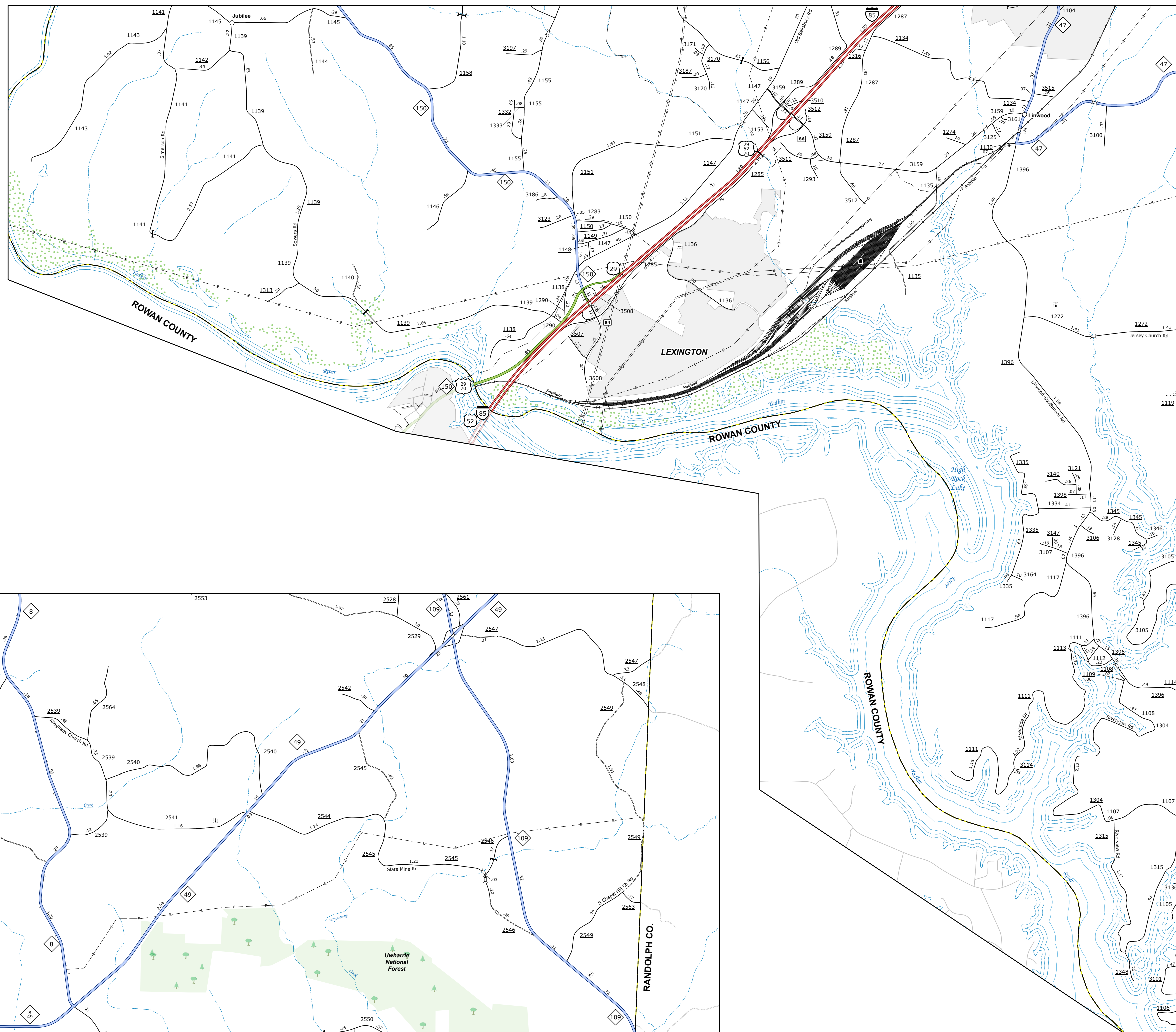
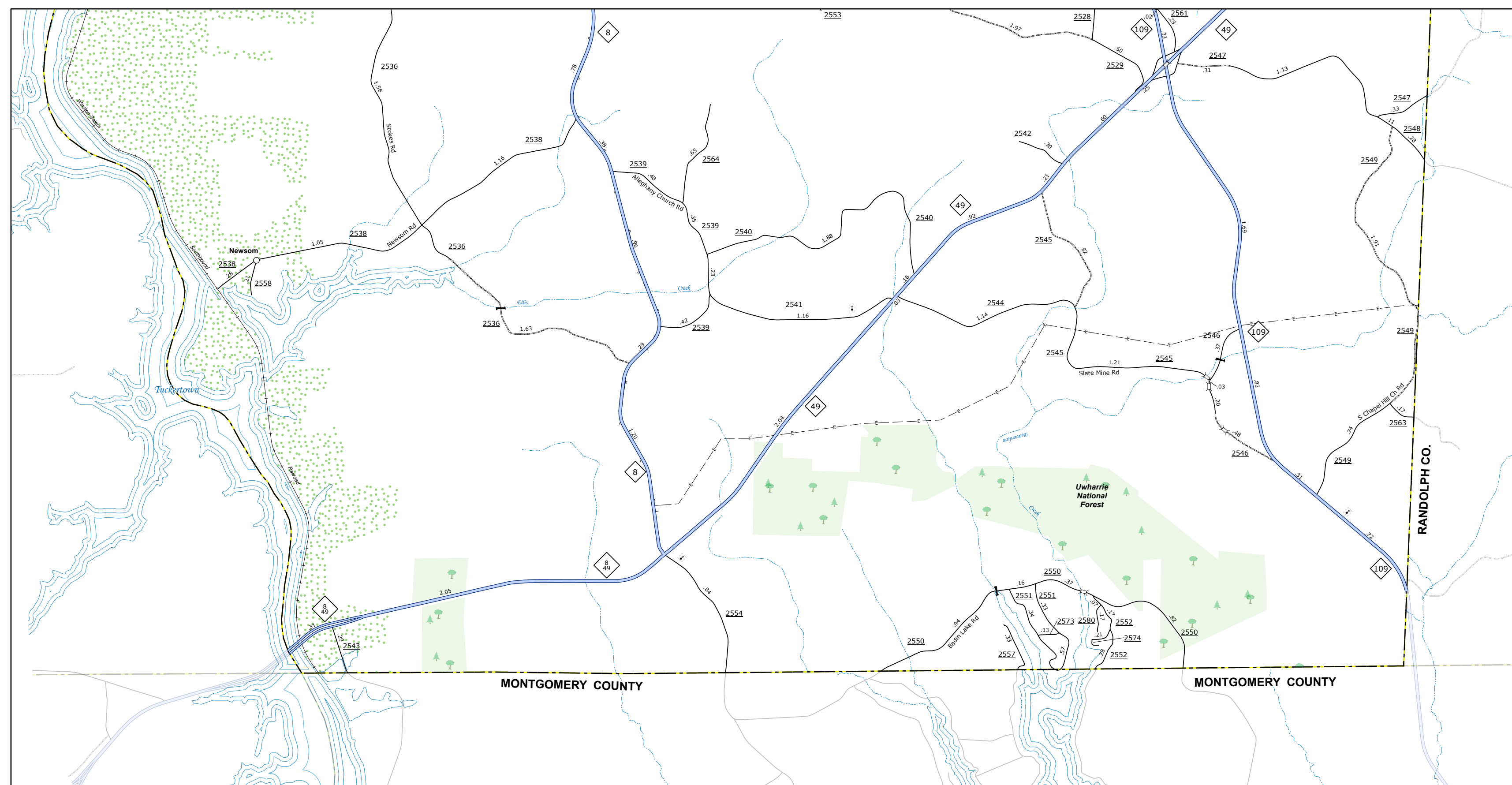
DAVIDSON COUNTY
NORTH CAROLINA

PREPARED BY THE
NORTH CAROLINA DEPARTMENT OF TRANSPORTATION
OPERATIONS PROGRAM MANAGEMENT UNIT - MAPPING SECTION
IN COOPERATION WITH THE
U.S. DEPARTMENT OF TRANSPORTATION
FEDERAL HIGHWAY ADMINISTRATION



NORTH CAROLINA PLANE COORDINATE SYSTEM
LAMBERT CONFORMAL CONIC PROJECTION

COPIES OF THIS MAP ARE AVAILABLE TO THE
PUBLIC AT NOMINAL COST. CONTACT US TO ORDER:
mapings@connect.ncd.net
<http://www.connect.ncd.net/resources/State-Mapping/Pages/Ordering-Maps.aspx>
(919) 834-8480



The diagram shows a 3x3 grid of cells. The cells are numbered as follows:

- Top row: Cell (1,1) is labeled '1', Cell (1,2) is labeled '2', Cell (1,3) is empty.
- Middle row: Cell (2,1) is labeled '6', Cell (2,2) is labeled '3', Cell (2,3) is empty.
- Bottom row: Cell (3,1) is labeled '5' and is highlighted with a thick black border, Cell (3,2) is labeled '4', Cell (3,3) is labeled '5' and is also highlighted with a thick black border.

 Dashed lines indicate connections between cells:

- From Cell (1,1) to Cell (2,1).
- From Cell (1,1) to Cell (1,2).
- From Cell (1,2) to Cell (2,2).
- From Cell (2,1) to Cell (2,2).
- From Cell (2,2) to Cell (3,2).
- From Cell (2,2) to Cell (3,3).
- From Cell (3,1) to Cell (3,2).
- From Cell (3,1) to Cell (3,3).

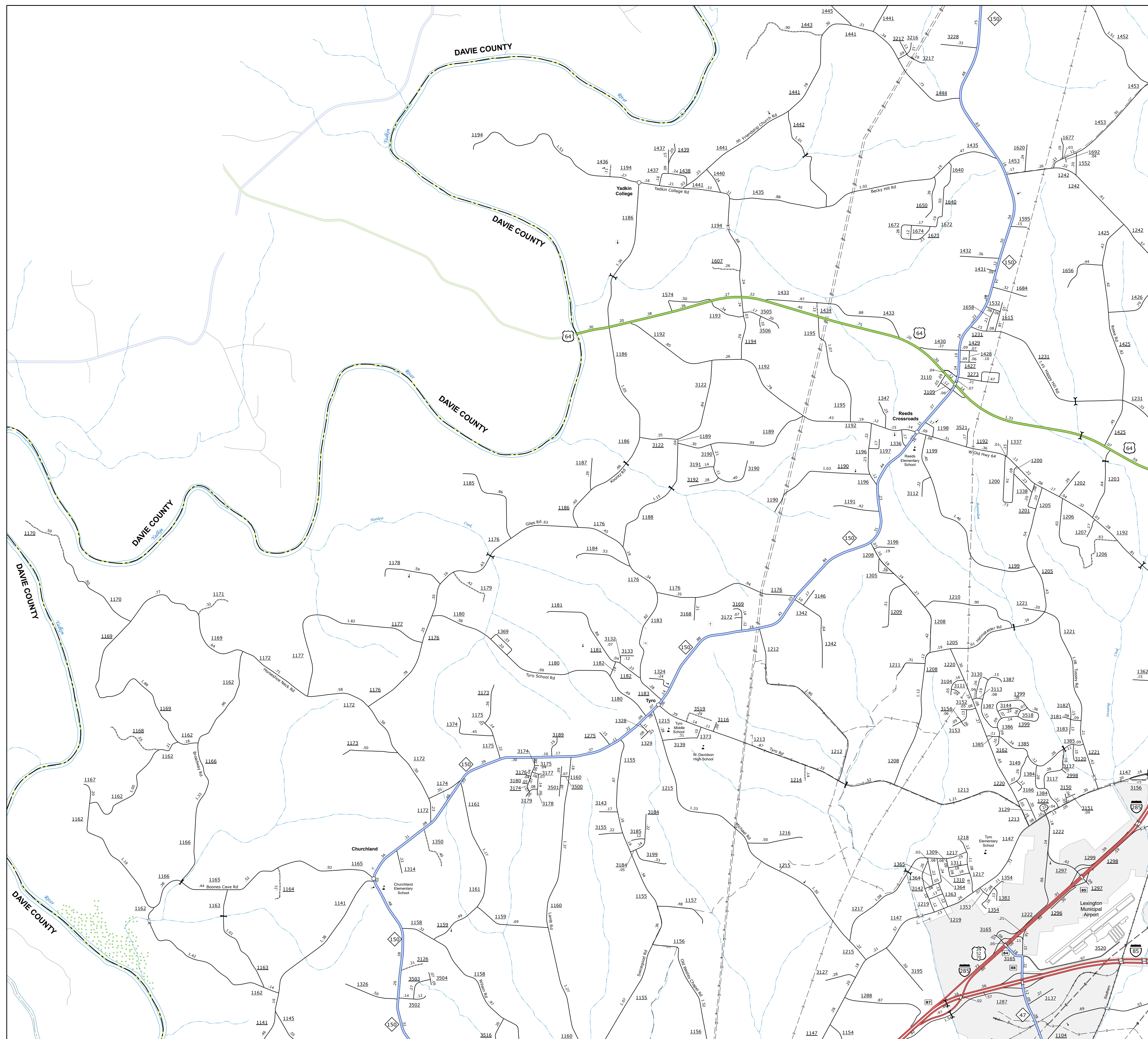
| INTERSTATE | US | NC | Divided Hwy | Undivided Hwy |
|---------------------------------|----|----|-------------|---------------|
| | | | | |
| BLUE RILEY PARKWAY | | | | |
| UNPAVED/ASPHALT ROAD | | | | |
| PAVED/ASPHALT ROAD | | | | |
| NO-SYSTEM ROAD | | | | |
| PROVISIONALLY DRAINAGE ROAD | | | | |
| PROVISIONAL DRAINAGE | | | | |
| INTERSECTION DISTANCE | | | | |
| STANDARD ROAD BRIDGE | | | | |
| RAILROAD BRIDGE | | | | |
| DRAW SPOON ON BRIDGE | | | | |
| RAILROAD BRIDGE | | | | |
| PEDESTRIAN WALKWAY | | | | |
| PEDESTRIAN UNDERPASS | | | | |
| VEHICLE UNDERPASS | | | | |
| TUNNEL | | | | |
| CULVERT | | | | |
| INTERSTATE | | | | |
| U.S. NUMBERED HIGHWAY | | | | |
| N.C. NUMBERED HIGHWAY | | | | |
| N.C. NUMBERED BYCICLE ROUTE | | | | |
| INTERSTATE INTERCHANGE | | | | |
| INTERSTATE DIAGONAL RUMBLE | | | | |
| SECONDARY ROAD NUMBER | | | | |
| TILITY LINES | | | | |
| RAILROAD ROUTE | | | | |
| RAILROAD STATION | | | | |
| POST AREA | | | | |
| STATE LINE | | | | |
| COUNTY LINE | | | | |
| COUNTY | | | | |
| LOCAL BOUNDARIES | | | | |
| LIMITS | | | | |
| FERRY ROUTE AND RAMP | | | | |
| WATERWAY OR OCEAN/STREAM | | | | |
| WATER OR CREEK | | | | |
| WATERWAY OR OCEAN/STREAM | | | | |
| DAM OR DAM WITH LOCK | | | | |
| WATERFALL | | | | |
| WATERWAY | | | | |
| COMMUNITY | | | | |
| COUNTY SEAT | | | | |
| SCHOOL | | | | |
| UNIVERSITY | | | | |
| HOSPITAL | | | | |
| CONVICTED PRISON | | | | |
| CHURCH | | | | |
| CHURCH WITH CEMETERY | | | | |
| TEMPLE | | | | |
| PARK/STATION | | | | |
| CORRECTION OR PENAL INSTITUTION | | | | |
| MINOR OR PT | | | | |
| WATERWAY OR OCEAN/STREAM | | | | |
| HIGHWAY DIV. OR DIST. OFFICE | | | | |
| MILITARY POST | | | | |
| WATERWAY | | | | |
| FARGO/ROADS | | | | |
| HISTORICAL SITE | | | | |
| POINT OF INTEREST | | | | |
| POST OFFICE | | | | |
| WATERWAY | | | | |
| LIGHTHOUSE | | | | |
| MOUNTAIN SUMMIT | | | | |
| BOUNCE GARDEN | | | | |
| OVERLOOK | | | | |
| REST AREA | | | | |
| UNPAVED/ASPHALT ROAD | | | | |
| WELCOME CTR REST AREA | | | | |
| MILITARY AIRPORT | | | | |



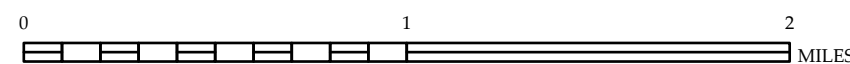
PREPARED BY THE
NORTH CAROLINA DEPARTMENT OF TRANSPORTATION
OPERATIONS PROGRAM MANAGEMENT UNIT - MAPPING SECTION
IN COOPERATION WITH THE
U.S. DEPARTMENT OF TRANSPORTATION
FEDERAL HIGHWAY ADMINISTRATION

NORTH CAROLINA PLANE COORDINATE SYSTEM
LAMBERT CONFORMAL CONIC PROJECTION

COPIES OF THIS MAP ARE AVAILABLE TO THE
PUBLIC AT NOMINAL COST. CONTACT US TO ORDER:
mapings@connect.ncd.net
<http://www.connect.ncd.net/resources/State-Mapping/Pages/Ordering-Maps.aspx>
(919) 834-8480

[illegible]

PREPARED BY THE
NORTH CAROLINA DEPARTMENT OF TRANSPORTATION
OPERATIONS PROGRAM MANAGEMENT UNIT - MAPPING SECTION
IN COOPERATION WITH THE
U.S. DEPARTMENT OF TRANSPORTATION
FEDERAL HIGHWAY ADMINISTRATION



NORTH CAROLINA PLANE COORDINATE SYSTEM
LAMBERT CONFORMAL CONIC PROJECTION