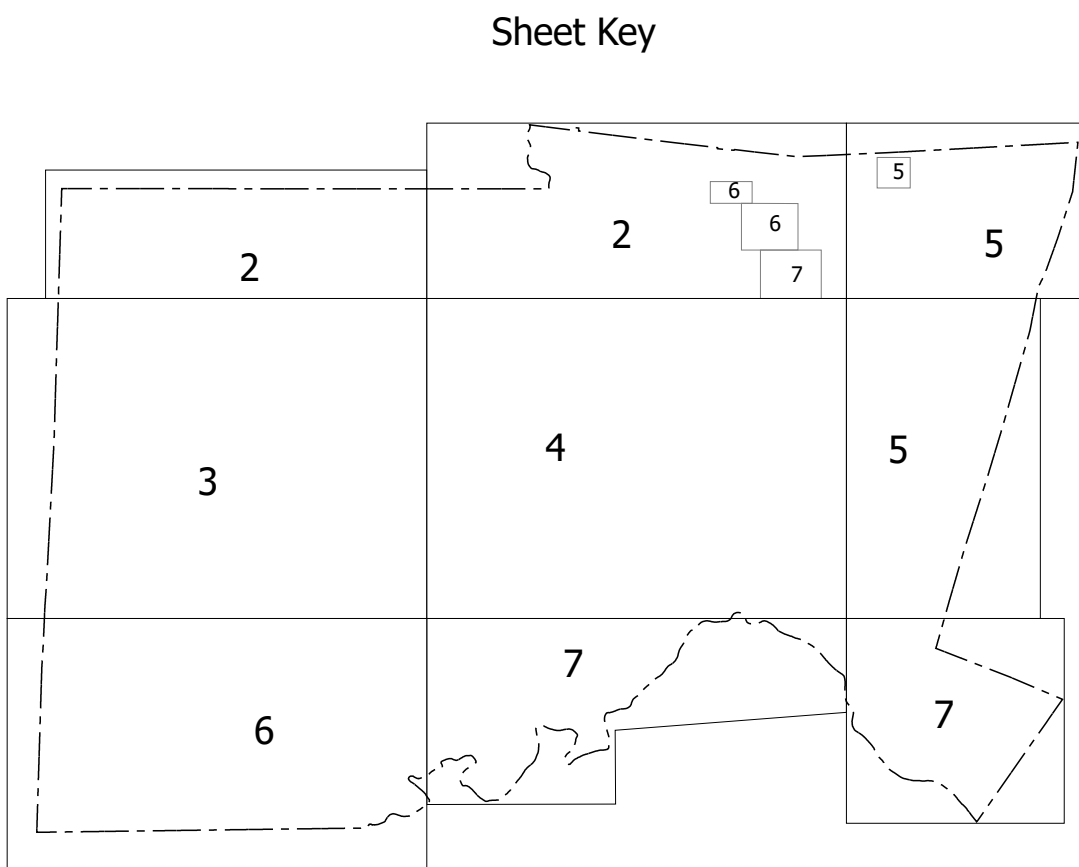
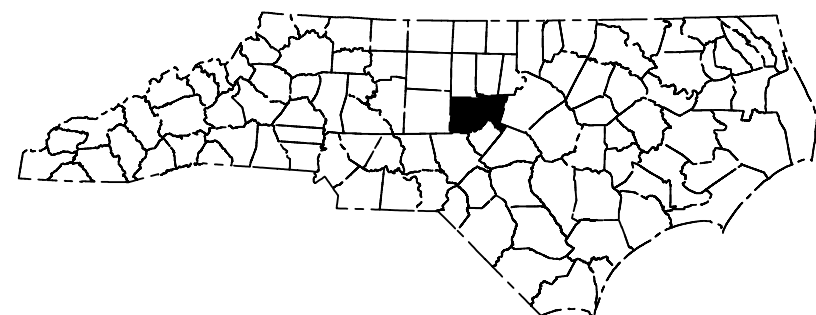
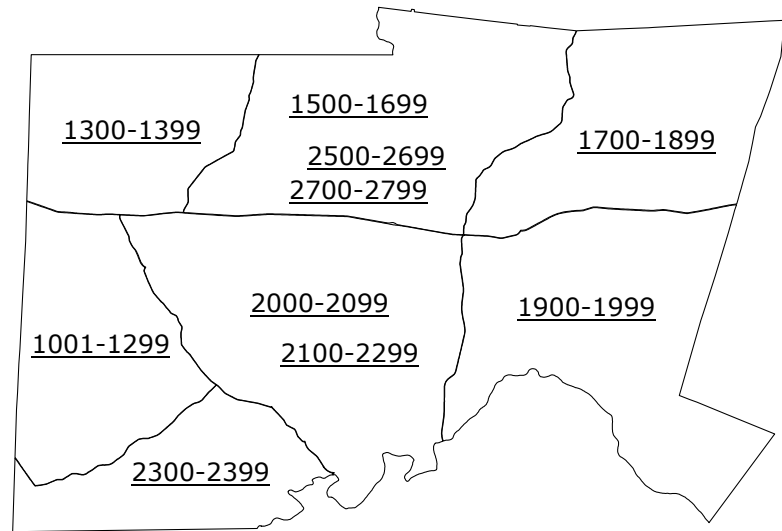
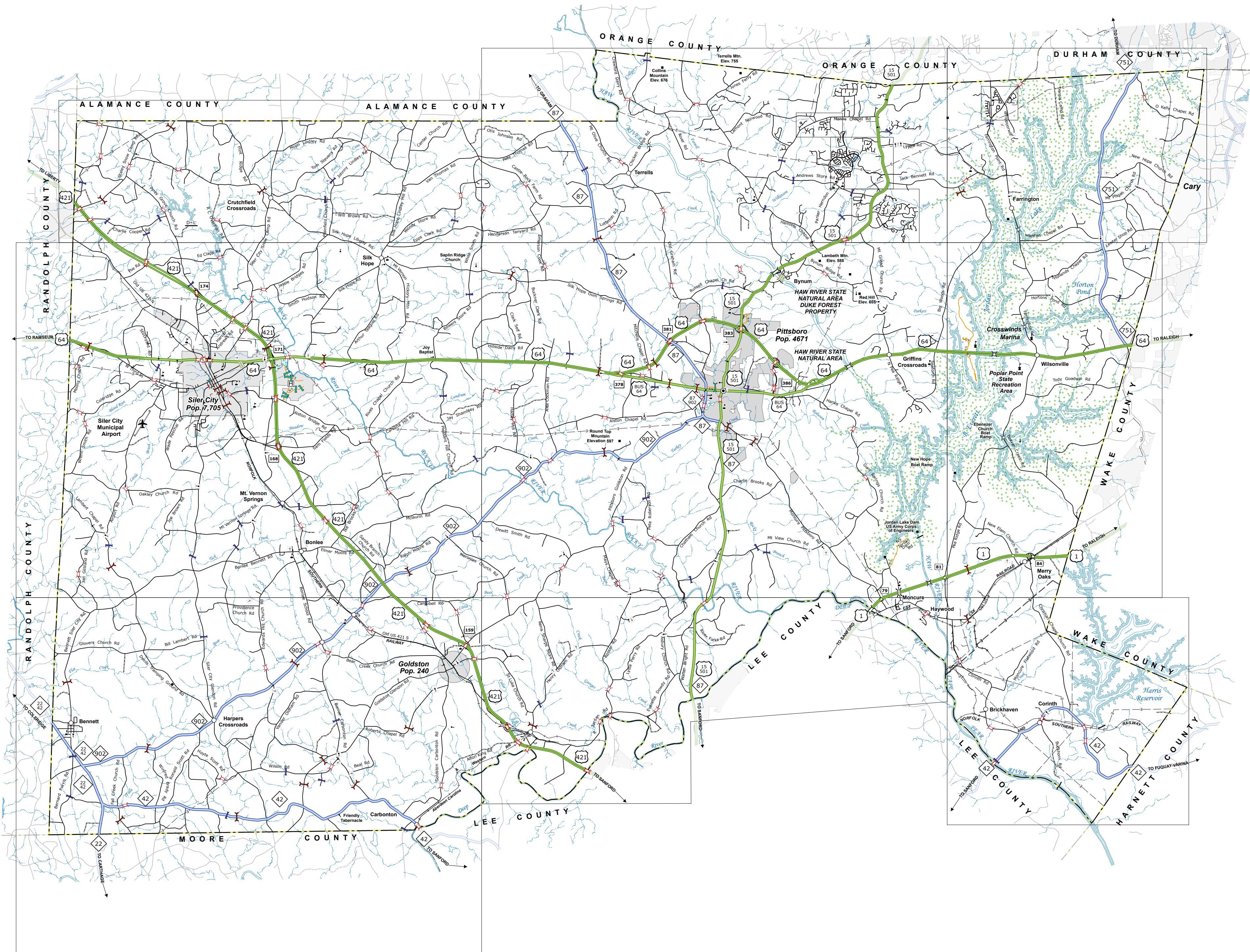
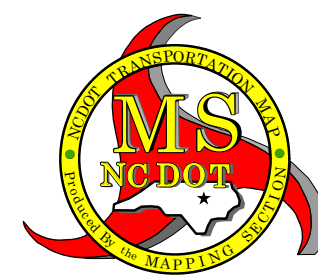


THESE DATA WERE PROVIDED BY THE NORTH CAROLINA DEPARTMENT OF TRANSPORTATION. THE DATA IS SUBJECT TO THE TERMS AND CONDITIONS OF THE LICENSE AGREEMENT. THE DATA IS PROVIDED AS IS, WITHOUT WARRANTY OF ANY KIND, EXPRESS OR IMPLIED, INCLUDING BUT NOT LIMITED TO THE WARRANTIES OF MERCHANTABILITY, FITNESS FOR A PARTICULAR PURPOSE, AND NONINFRINGEMENT. THE DATA IS NOT TO BE USED FOR ANY PURPOSE OTHER THAN THAT FOR WHICH IT WAS PROVIDED. THE DATA IS NOT TO BE REPRODUCED OR TRANSMITTED IN ANY FORM OR BY ANY MEANS, ELECTRONIC OR MECHANICAL, INCLUDING PHOTOCOPYING, RECORDING, OR BY ANY INFORMATION STORAGE AND RETRIEVAL SYSTEM, WITHOUT PERMISSION IN WRITING FROM THE NORTH CAROLINA DEPARTMENT OF TRANSPORTATION. THE DATA IS NOT TO BE USED FOR ANY PURPOSE OTHER THAN THAT FOR WHICH IT WAS PROVIDED. THE DATA IS NOT TO BE REPRODUCED OR TRANSMITTED IN ANY FORM OR BY ANY MEANS, ELECTRONIC OR MECHANICAL, INCLUDING PHOTOCOPYING, RECORDING, OR BY ANY INFORMATION STORAGE AND RETRIEVAL SYSTEM, WITHOUT PERMISSION IN WRITING FROM THE NORTH CAROLINA DEPARTMENT OF TRANSPORTATION.



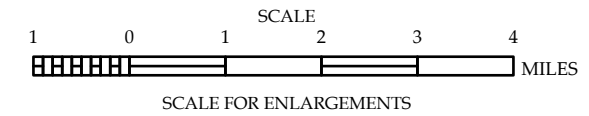
### LEGEND

- INTERSTATE US NC
- Divided Hwy
- Undivided Hwy
- BLUE RIDGE PARKWAY
- UNPAVED SURFACED ROAD
- HARD SURFACED ROAD
- PROVISIONALLY DRAWN ROAD
- PROJECTED LOCATION
- INTERSECTION DISTANCE
- STANDARD ROAD BRIDGE
- RAILROAD BRIDGE
- DRAW SPAN ON BRIDGE
- PEDESTRIAN BRIDGE
- PEDESTRIAN WALKWAY
- PEDESTRIAN UNDERPASS
- VEHICULAR UNDERPASS
- TUNNEL
- CULVERT
- PIPE
- INTERSTATE HIGHWAY
- U.S. NUMBERED HIGHWAY
- N.C. NUMBERED HIGHWAY
- U.S. NUMBERED BICYCLE ROUTE
- N.C. NUMBERED BICYCLE ROUTE
- INTERSTATE INTERCHANGE NUMBER
- SECONDARY ROAD NUMBER
- UTILITY LINES
- RAILROAD LINE
- RAILROAD STATION
- INSET AREA
- STATE LINE
- COUNTY LINE
- SMOOTHED URBAN BOUNDARIES
- CITY LIMITS
- FERRY ROUTE AND RAMP
- NARROW CREEK OR STREAM
- WIDE RIVER OR CREEK
- RESERVOIR, POND OR LAKE W/ ISLAND
- DAM OR DAM WITH LOCK
- WATERFALL
- SWAMP
- COMMUNITY
- COUNTY SEAT
- SCHOOL
- COLLEGE OR UNIVERSITY
- HOSPITAL
- COAST GUARD STATION
- CHURCH
- CHURCH WITH CEMETERY
- CEMETERY
- PATROL STATION
- CORRECTION OR PENAL INSTITUTION
- QUARRY
- MINE OR PIT
- HIGHWAY GARAGE OR MAINT. YARD
- HIGHWAY DIV. OR DIST. OFFICE
- MILITARY POST
- WEIGH STATION
- FAIRGROUNDS
- HISTORICAL SITE
- POINTS OF INTEREST
- POST OFFICE
- STATE FOREST
- LIGHTHOUSE
- MOUNTAIN SUMMIT
- MOUNTAIN GAP
- OVERLOOK
- REST AREA
- VISITOR CTR/REST AREA
- WELCOME CTR/REST AREA
- AIRPORT
- MILITARY AIRPORT



## CHATHAM COUNTY NORTH CAROLINA

PREPARED BY THE  
NORTH CAROLINA DEPARTMENT OF TRANSPORTATION  
OPERATIONS PROGRAM MANAGEMENT UNIT - MAPPING SECTION  
IN COOPERATION WITH THE  
U.S. DEPARTMENT OF TRANSPORTATION  
FEDERAL HIGHWAY ADMINISTRATION



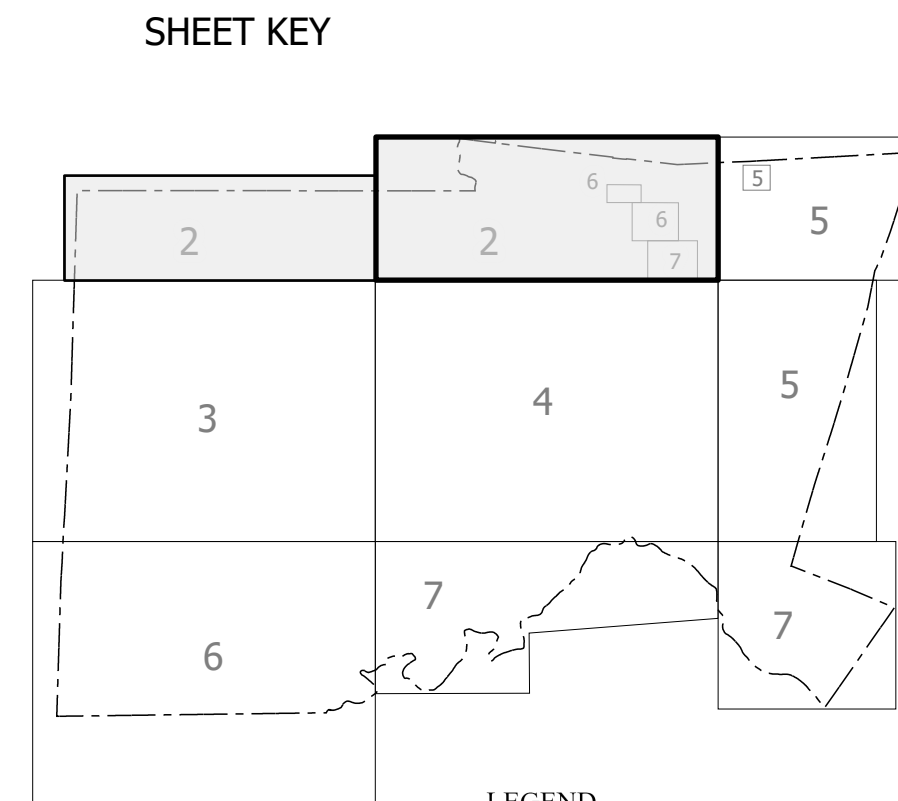
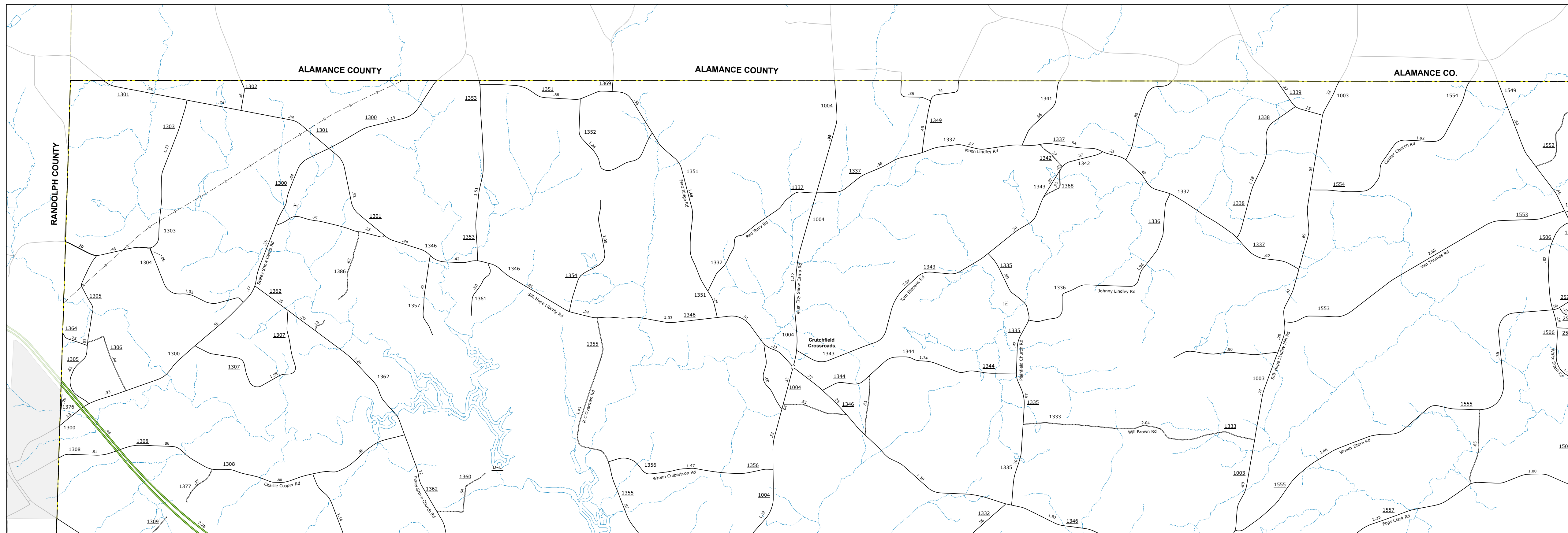
SCALE FOR ENLARGEMENTS

NORTH CAROLINA PLANE COORDINATE SYSTEM  
LAMBERT CONFORMAL CONIC PROJECTION

SHEET 1 OF 7

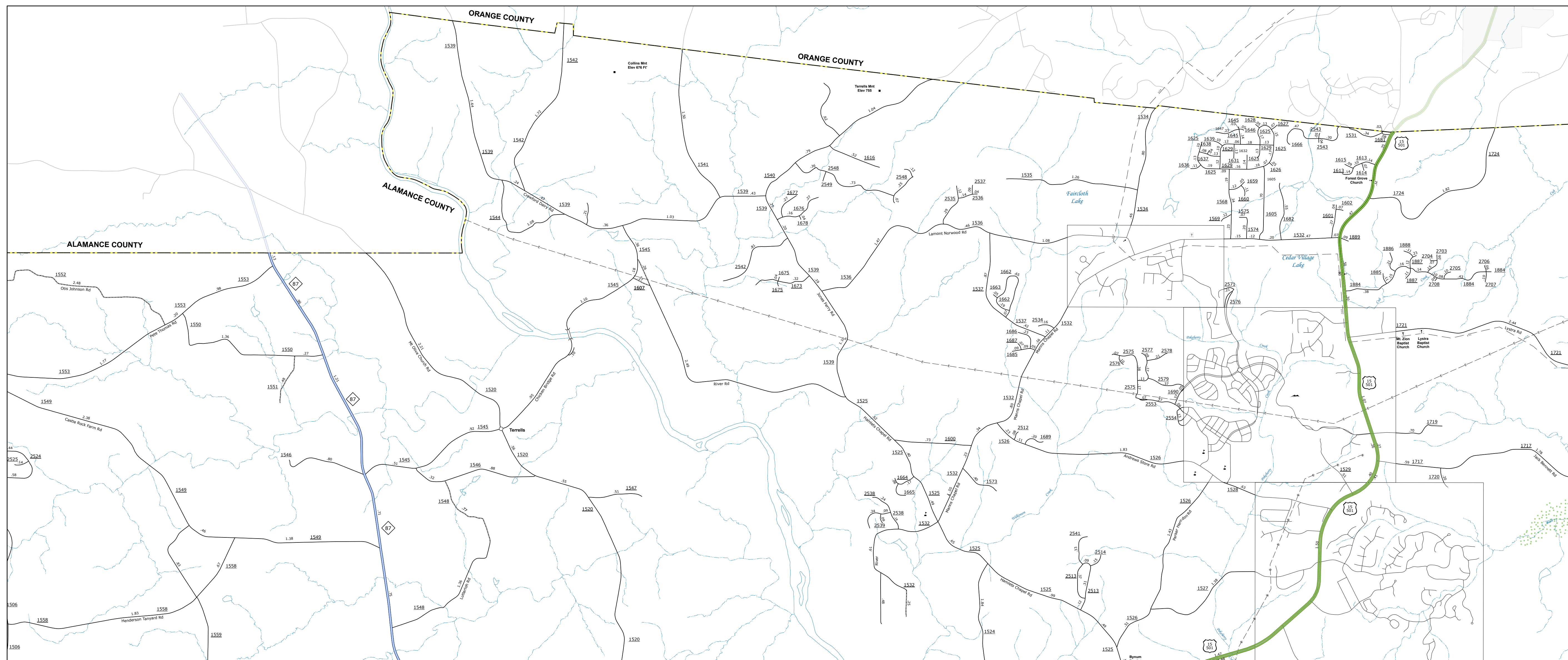


**TERMS OF USE:** The Mapping Section's goal is to provide the most accurate and current information possible. Map data is compiled from numerous sources and is not guaranteed to be 100% accurate. The data provided will vary. The North Carolina Department of Transportation shall not be held liable for any errors in the map data. This map cannot be construed to be a legal document. The information shown on this map was last updated in January 2025. For digital copies of this map or additional map products, visit <https://connect.ncdot.gov/Data/State-Mapping>.



LEGEND

- | INTERSTATE | US | NC |                                   |
|------------|----|----|-----------------------------------|
|            |    |    | Divided Hwy<br>Undivided Hwy      |
|            |    |    | BLUE RIDGE PARKWAY                |
|            |    |    | UNPAVED SURFACE ROAD              |
|            |    |    | LARGE UNPAVED ROAD                |
|            |    |    | NO-SYSTEM ROAD                    |
|            |    |    | PROVISIONALLY DRAWN ROAD          |
|            |    |    | PROPOSED LOCATION                 |
|            |    |    | INTERSECTION DISTANCE             |
|            |    |    | STANDARD ROAD BRIDGE              |
|            |    |    | RAILROAD BRIDGE                   |
|            |    |    | DEAN SWAN ON BRIDGE               |
|            |    |    | PEDESTRIAN BRIDGE                 |
|            |    |    | PEDESTRIAN WALKWAY                |
|            |    |    | PEDESTRIAN UNDERPASS              |
|            |    |    | VIRGIL ROAD UNDERPASS             |
|            |    |    | TUNNEL                            |
|            |    |    | CULVERT                           |
|            |    |    | PIPE                              |
|            |    |    | INTERSTATE HIGHWAY                |
|            |    |    | U.S. NUMBERED HIGHWAY             |
|            |    |    | N.C. NUMBERED HIGHWAY             |
|            |    |    | U.S. NUMBERED BI-CYCLE ROUTE      |
|            |    |    | N.C. NUMBERED BI-CYCLE ROUTE      |
|            |    |    | INTERSTATE INTERCHANGE NUMBER     |
|            |    |    | SECONDARY ROAD NUMBER             |
|            |    |    | UTILITY LINES                     |
|            |    |    | RAILROAD LINE                     |
|            |    |    | RAILROAD STATION                  |
|            |    |    | INSET AREA                        |
|            |    |    | STATE LINE                        |
|            |    |    | COUNTY LINE                       |
|            |    |    | SMOOTHED DRAIN BOUNDARIES         |
|            |    |    | CITY LIMITS                       |
|            |    |    | FERRY ROUTE AND RAMP              |
|            |    |    | NARROW CREEK OR STREAM            |
|            |    |    | WATER CREEK                       |
|            |    |    | RESERVOIR, POND OR LAKE W/ ISLAND |
|            |    |    | DAM OR DAM WITH LOCK              |
|            |    |    | NATURAL                           |
|            |    |    | SWAMP                             |
|            |    |    | COMMUNITY                         |
|            |    |    | SCHOOL SEAT                       |
|            |    |    | SCHOOL                            |
|            |    |    | VOLUNTEER UNIVERSITY              |
|            |    |    | HOSPITAL                          |
|            |    |    | COAST GUARD STATION               |
|            |    |    | CHURCH                            |
|            |    |    | CHURCH WITH CEMETERY              |
|            |    |    | CEMETERY                          |
|            |    |    | PATROL STATION                    |
|            |    |    | PRISON OR PENAL INSTITUTION       |
|            |    |    | QUARRY                            |
|            |    |    | MINE OR PIT                       |
|            |    |    | HIGHWAY GRADE OR MAINT. YARD      |
|            |    |    | RAILROAD DIV. OR POST OFFICE      |
|            |    |    | MILITARY POST                     |
|            |    |    | WEIGHT STATION                    |
|            |    |    | FARBOUNDS                         |
|            |    |    | HISTORIC AL-SITE                  |
|            |    |    | POINTS OF INTEREST                |
|            |    |    | POST OFFICE                       |
|            |    |    | STATE FOREST                      |
|            |    |    | LIGHTHOUSE                        |
|            |    |    | MOUNTAIN SUMMIT                   |
|            |    |    | MOUNTAIN GAP                      |
|            |    |    | OVERLOOK                          |
|            |    |    | REST AREA                         |
|            |    |    | VISITOR CTR REST AREA             |
|            |    |    | WELCOME CTR REST AREA             |
|            |    |    | AIRPORT                           |
|            |    |    | MILITARY AIRPORT                  |



CHATHAM COUNTY  
NORTH CAROLINA

PREPARED BY THE  
NORTH CAROLINA DEPARTMENT OF TRANSPORTATION  
OPERATIONS PROGRAM MANAGEMENT UNIT - MAPPING SECTION  
IN COOPERATION WITH THE  
U.S. DEPARTMENT OF TRANSPORTATION  
FEDERAL HIGHWAY ADMINISTRATION

SCALE

1 0 1

MILES

NORTH CAROLINA PLANE COORDINATE SYSTEM  
LAMBERT CONFORMAL CONIC PROJECTION

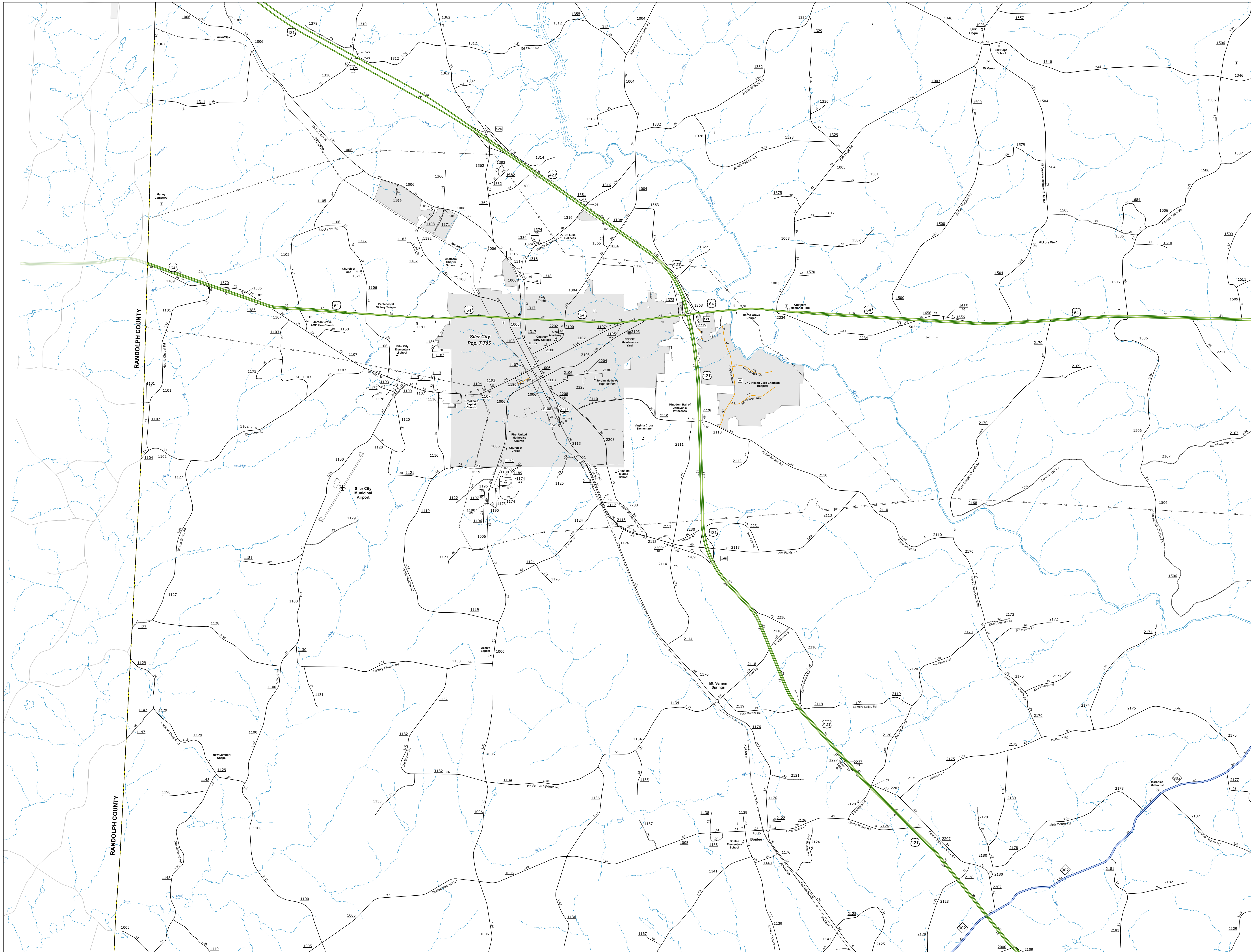
SHEET 2 of 7

COPIES OF THIS MAP ARE AVAILABLE TO THE  
PUBLIC AT NOMINAL COST. CONTACT US TO ORDER:  
mapping.support@ncdot.gov  
<https://connect.ncdot.gov/resources/State-Mapping/Pages/Ordering-Maps.aspx>

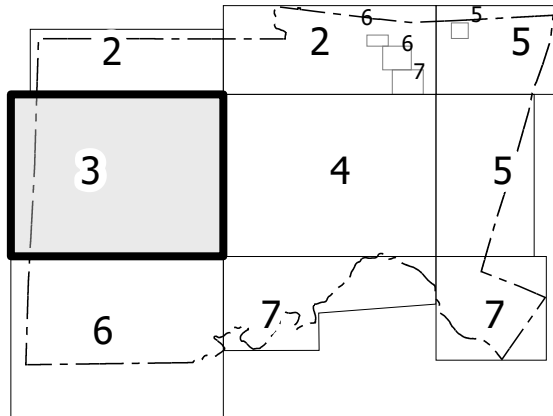


THIS IS A PRELIMINARY MAP. It is not intended for use as a legal document. The data is derived from numerous sources with varying degrees of accuracy and may not be current. The accuracy, completeness, and timeliness of the data is not guaranteed. The information shown on this map is not intended to be used as a legal document. For legal copies of this map or additional map products, visit [www.ncdot.gov](http://www.ncdot.gov).

COPIES OF THIS MAP ARE AVAILABLE TO THE PUBLIC AT NOMINAL COST. CONTACT US TO ORDER: [maps@ncdot.gov](mailto:maps@ncdot.gov) (919) 882-4880



#### SHEET KEY



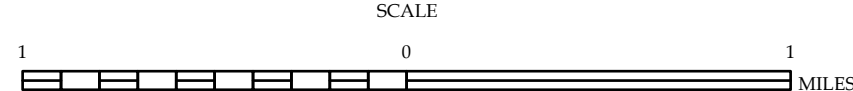
#### LEGEND

- INTERSTATE US NC Divided Hwy
- UNPAVED SURFACED ROAD
- HARD SURFACED ROAD
- NON-SYSTEM ROAD
- PROVISIONALLY DRAWN ROAD
- PROJECTED LOCATION
- INTERSECTION DISTANCE
- STANDARD ROAD BRIDGE
- RAILROAD BRIDGE
- DRAW SPAN ON BRIDGE
- PEDESTRIAN BRIDGE
- PEDESTRIAN WALKWAY
- PEDESTRIAN UNDERPASS
- VEHICULAR UNDERPASS
- TUNNEL
- CULVERT
- PIPE
- INTERSTATE HIGHWAY
- U.S. NUMBERED HIGHWAY
- N.C. NUMBERED HIGHWAY
- U.S. NUMBERED BICYCLE ROUTE
- N.C. NUMBERED BICYCLE ROUTE
- INTERSTATE INTERCHANGE NUMBER
- SECONDARY ROAD NUMBER
- UTILITY LINES
- RAILROAD LINE
- RAILROAD STATION
- INSET AREA
- STATE LINE
- COUNTY LINE
- SMOOTHED URBAN BOUNDARIES
- CITY LIMITS
- FERRY ROUTE AND RAMP
- NARROW CREEK OR STREAM
- WIDE RIVER OR CREEK
- RESERVOIR, POND OR LAKE W/ ISLAND
- DAM OR DAM WITH LOCK
- WATERFALL
- SWAMP
- COMMUNITY
- COUNTY SEAT
- SCHOOL
- COLLEGE OR UNIVERSITY
- HOSPITAL
- COAST GUARD STATION
- CHURCH
- CHURCH WITH CEMETERY
- CEMETERY
- PATROL STATION
- CORRECTION OR PENAL INSTITUTION
- QUARRY
- MINE OR PIT
- HIGHWAY GARAGE OR MAINT. YARD
- HIGHWAY DIV. OR DIST. OFFICE
- MILITARY POST
- WEIGH STATION
- FAIRGROUNDS
- HISTORICAL SITE
- POINTS OF INTEREST
- POST OFFICE
- STATE FOREST
- LIGHTHOUSE
- MOUNTAIN SUMMIT
- MOUNTAIN GAP
- OVERLOOK
- REST AREA
- VISITOR CTR/REST AREA
- WELCOME CTR/REST AREA
- AIRPORT
- MILITARY AIRPORT



## CHATHAM COUNTY NORTH CAROLINA

PREPARED BY THE  
NORTH CAROLINA DEPARTMENT OF TRANSPORTATION  
OPERATIONS PROGRAM MANAGEMENT UNIT - MAPPING SECTION  
IN COOPERATION WITH THE  
U.S. DEPARTMENT OF TRANSPORTATION  
FEDERAL HIGHWAY ADMINISTRATION



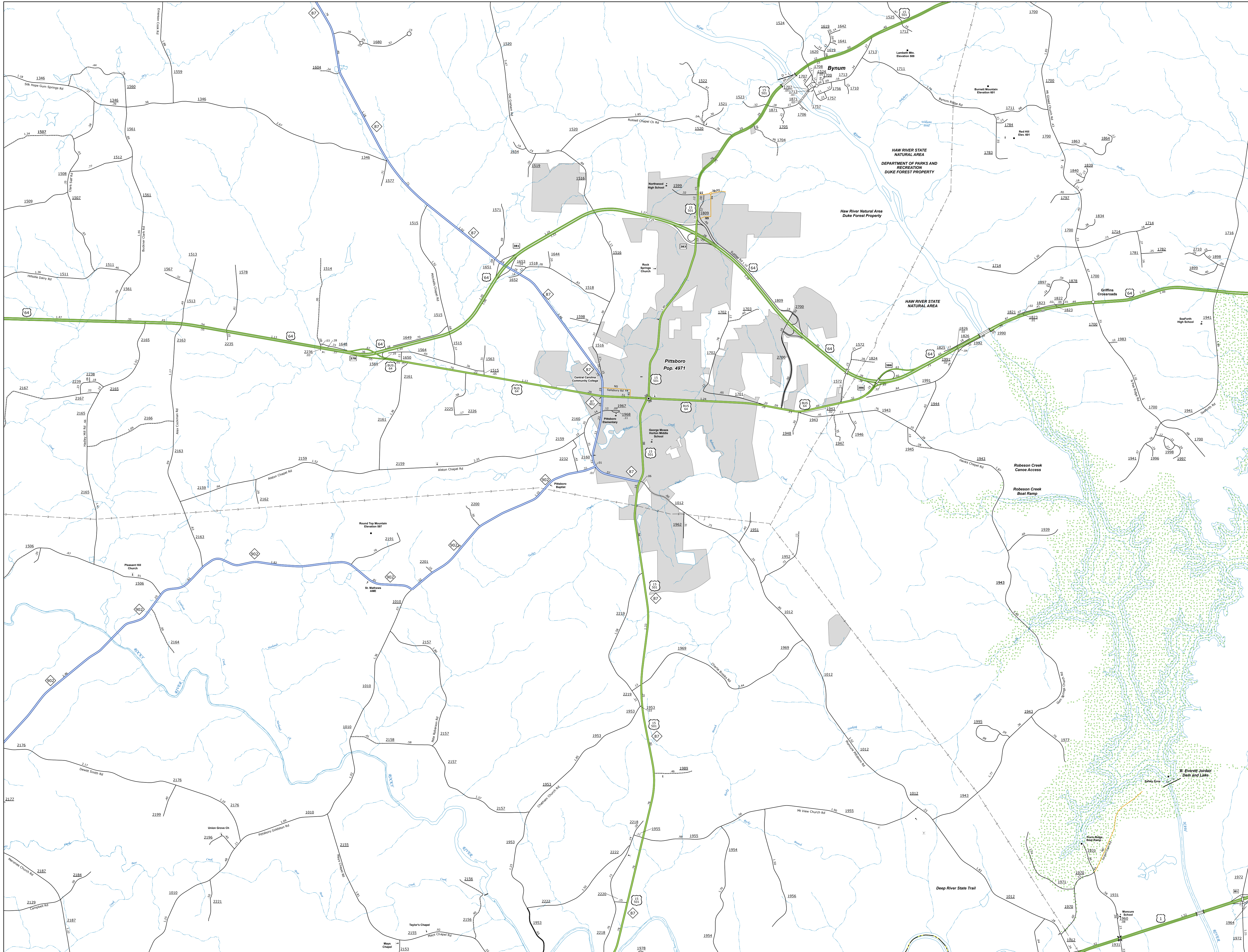
NORTH CAROLINA PLANE COORDINATE SYSTEM  
LAMBERT CONFORMAL CONIC PROJECTION

SHEET 3 of 7



THIS IS A PRELIMINARY MAP. It is subject to change without notice and is not intended to be used for legal purposes. The State of North Carolina is not responsible for any errors or omissions in this map. This map is provided for informational purposes only. For legal purposes, please consult the official records of the State of North Carolina.

COPIES OF THIS MAP ARE AVAILABLE FOR THE PUBLIC AT A NOMINAL COST. CONTACT US TO ORDER: 919.834.8460



2

2

5

3

4

5

6

7

7

LEGEND

INTERSTATE

US

NC

Divided Hwy

Undivided Hwy

BLUE RIDGE PARKWAY

UNPAVED SURFACED ROAD

HARD SURFACED ROAD

NON-SYSTEM ROAD

PROVISIONALLY DRAWN ROAD

PROJECTED LOCATION

INTERSECTION DISTANCE

STANDARD ROAD BRIDGE

RAILROAD BRIDGE

DRAW SPAN ON BRIDGE

PEDESTRIAN BRIDGE

PEDESTRIAN WALKWAY

PEDESTRIAN UNDERPASS

VEHICULAR UNDERPASS

TUNNEL

CULVERT

PIPE

INTERSTATE HIGHWAY

U.S. NUMBERED HIGHWAY

N.C. NUMBERED HIGHWAY

N.C. NUMBERED BICYCLE ROUTE

N.C. NUMBERED BICYCLE ROUTE

INTERSTATE INTERCHANGE NUMBER

SECONDARY ROAD NUMBER

8888

TELEGRAPH OPERATOR

RAILROAD LINE

RAILROAD STATION

INSET AREA

STATE LINE

COUNTY LINE

SMOOTHED URBAN BOUNDARIES

CITY LIMITS

FERRY ROUTE AND RAMP

NARROW CREEK OR STREAM

WIDE RIVER OR CREEK

RESERVOIR, POND OR LAKE W/ ISLAND

DAM OR DAM WITH LOCK

WATERFALL

SWAMP

COMMUNITY

COUNTY SEAT

SCHOOL

COLLEGE OR UNIVERSITY

HOSPITAL

COAST GUARD STATION

CHURCH

CHURCH WITH CEMETERY

CEMETERY

PATROL STATION

CORRECTION OR PENAL INSTITUTION

QUARRY

MINE OR PIT

HIGHWAY GARAGE OR MAINT. YARD

HIGHWAY DIV. OR DIST. OFFICE

MILITARY POST

WEIGH STATION

FAIRGROUNDS

HISTORICAL SITE

POINTS OF INTEREST

POST OFFICE

STATE FOREST

LIGHTHOUSE

MOUNTAIN SUMMIT

MOUNTAIN GAP

OVERLOOK

REST AREA

VISITOR CTR/REST AREA

WELCOME CTR/REST AREA

AIRPORT

MILITARY AIRPORT

NATIONAL / STATE FOREST BOUNDARY

WILDLIFE REFUGE

NATIONAL / STATE PARK BOUNDARY

GAME LANDS BOUNDARY

MILITARY RESERVATION BOUNDARY

INDIAN RESERVATION BOUNDARY

MS

NC

DOT

STATE OF NORTH CAROLINA

CHATHAM COUNTY

NORTH CAROLINA

PREPARED BY THE

NORTH CAROLINA DEPARTMENT OF TRANSPORTATION

OPERATIONS PROGRAM MANAGEMENT UNIT - MAPPING SECTION

IN COOPERATION WITH THE

U.S. DEPARTMENT OF TRANSPORTATION

FEDERAL HIGHWAY ADMINISTRATION

SCALE

1

0

1

MILES

NORTH CAROLINA PLANE COORDINATE SYSTEM

LAMBERT CONFORMAL CONIC PROJECTION

DIVISION 8

DISTRICT 1

CHATHAM COUNTY

NORTH CAROLINA

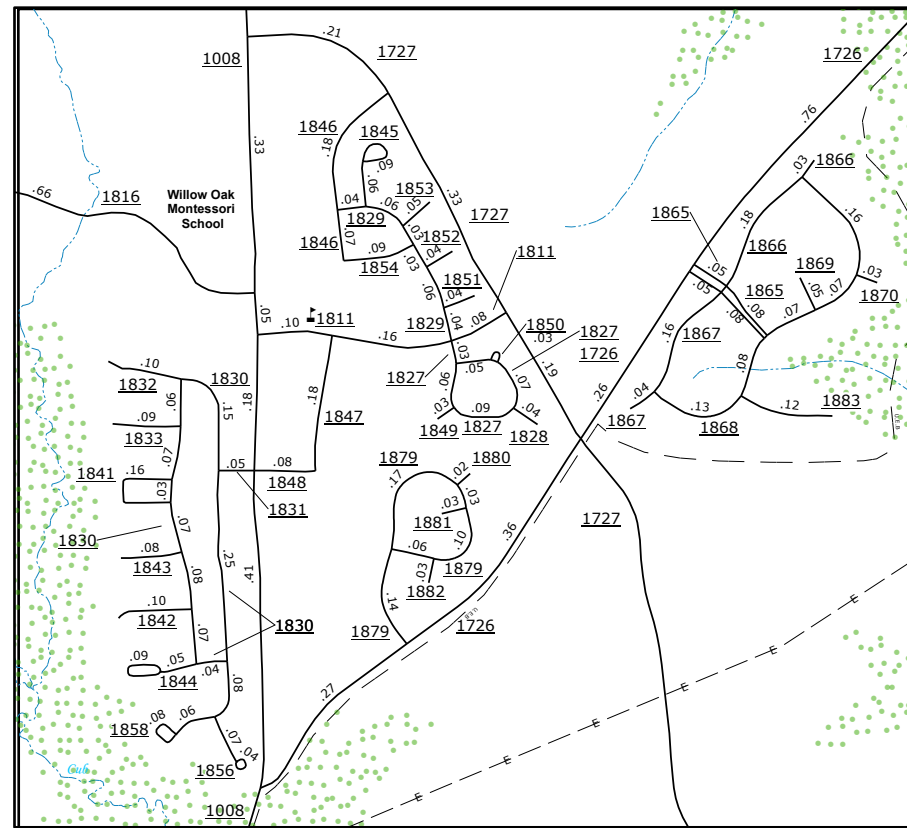
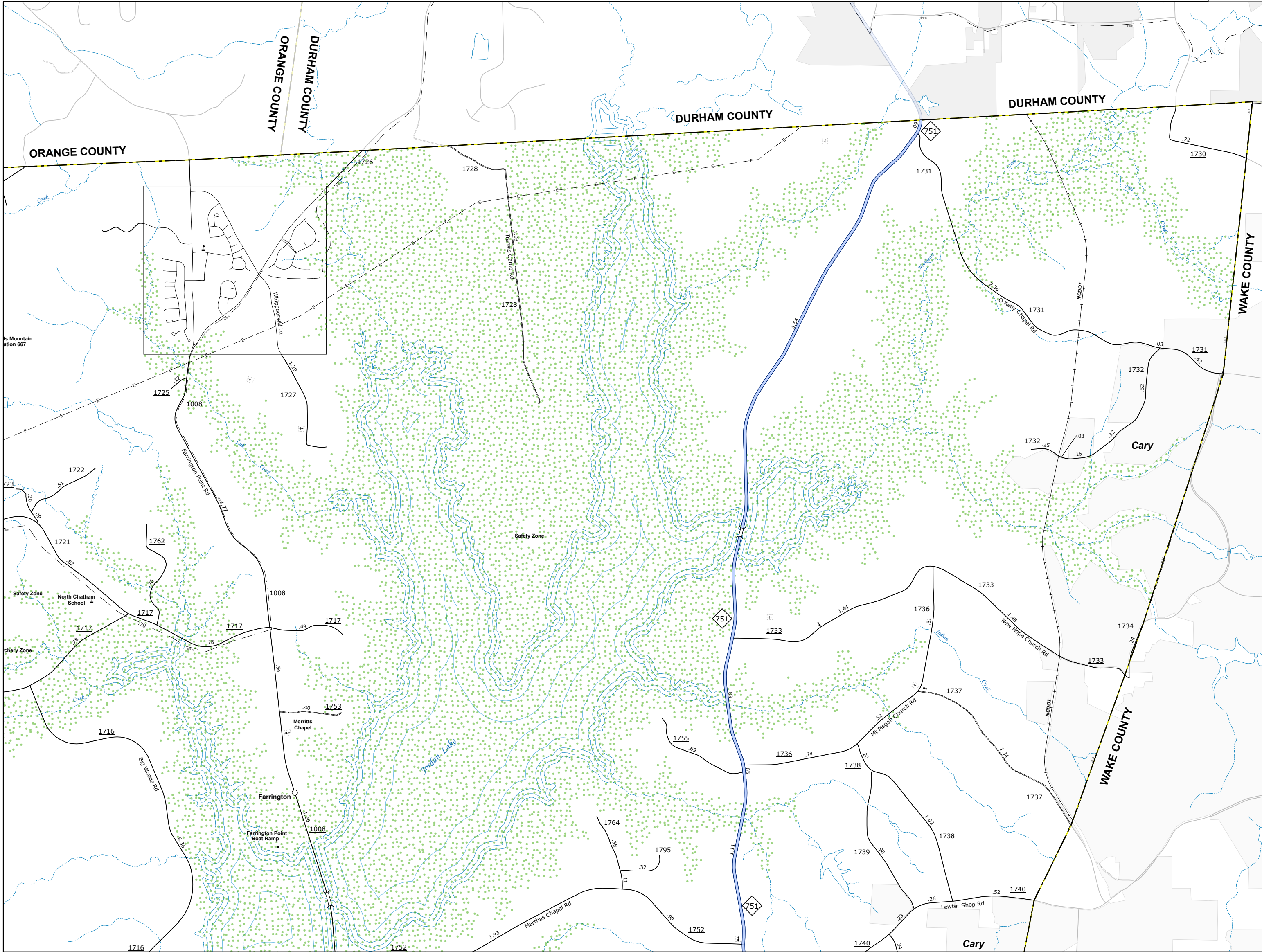
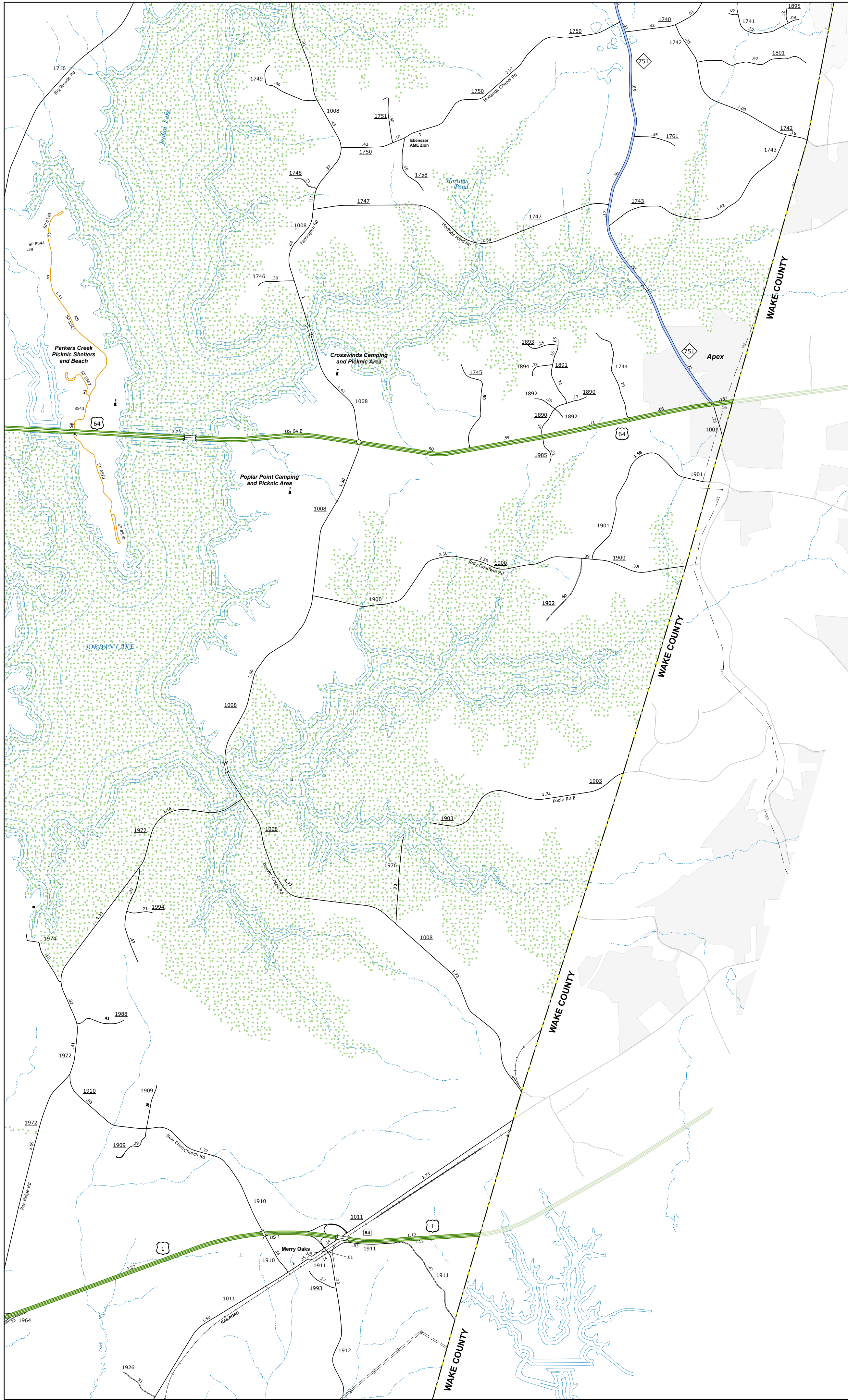
FIPS 037

SHEET 4 of 7

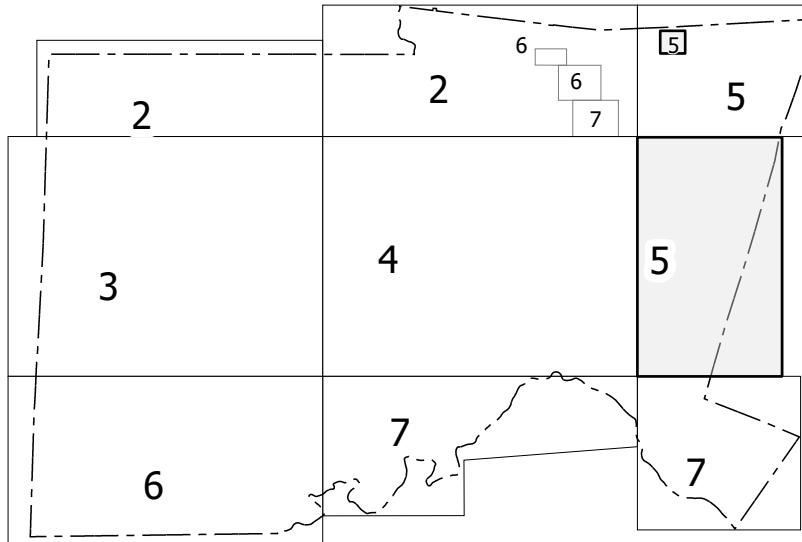


TRAFFIC TO USE: The Mapping Section is responsible for the production and content of the maps. The maps are subject to numerous factors with varying degrees of publication and map accuracy. As a result, the county cannot guarantee the accuracy of the maps. The maps are subject to change without notice. The information shown on the map is not intended to be used for any purpose other than for general reference. For digital copies of this map or additional map products, visit [www.ncdot.gov/transportation/mapping](http://www.ncdot.gov/transportation/mapping).

COPIES OF THIS MAP ARE AVAILABLE TO THE PUBLIC AT NO CHARGE. CONTACT US TO ORDER. [maps@ncdot.gov](mailto:maps@ncdot.gov) or [www.ncdot.gov/transportation/mapping](http://www.ncdot.gov/transportation/mapping). Maps are available for purchase at a cost of \$10.00 per copy. For digital copies of this map or additional map products, visit [www.ncdot.gov/transportation/mapping](http://www.ncdot.gov/transportation/mapping).



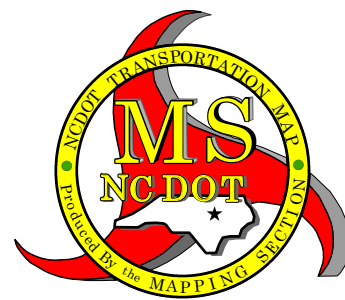
# SHEET KEY



## LEGEND

- INTERSTATE US NC Divided Hwy Undivided Hwy
- BLUE RIDGE PARKWAY
- UNPAVED SURFACED ROAD
- HARD SURFACED ROAD
- NON-SYSTEM ROAD
- PROVISIONALLY DRAWN ROAD
- PROJECTED LOCATION
- INTERSECTION DISTANCE
- STANDARD ROAD BRIDGE
- RAILROAD BRIDGE
- DRAW SPAN ON BRIDGE
- PEDESTRIAN BRIDGE
- PEDESTRIAN WALKWAY
- VEHICULAR UNDERPASS
- TUNNEL
- CULVERT
- PIPE
- INTERSTATE HIGHWAY
- U.S. NUMBERED HIGHWAY
- N.C. NUMBERED HIGHWAY
- U.S. NUMBERED BICYCLE ROUTE
- N.C. NUMBERED BICYCLE ROUTE
- INTERSTATE INTERCHANGE NUMBER
- SECONDARY ROAD NUMBER
- UTILITY LINES
- RAILROAD LINE
- RAILROAD STATION
- INSET AREA
- STATE LINE
- COUNTY LINE
- SMOOTHED URBAN BOUNDARIES
- CITY LIMITS
- FERRY ROUTE AND RAMPS
- NARROW CREEK OR STREAM
- WIDE RIVER OR CREEK
- RESERVOIR, POND OR LAKE W/ ISLAND
- DAM OR DAM WITH LOCK
- WATERFALL
- SWAMP
- COMMUNITY
- COUNTY SEAT
- SCHOOL
- COLLEGE OR UNIVERSITY
- HOSPITAL
- COAST GUARD STATION
- CHURCH
- CHURCH WITH CEMETERY
- CEMETERY
- PATROL STATION
- CORRECTION OR PENAL INSTITUTION
- QUARRY
- MINE OR PIT
- HIGHWAY GARAGE OR MAINT. YARD
- HIGHWAY DIV. OR DIST. OFFICE
- MILITARY POST
- WEIGH STATION
- FAIRGROUNDS
- HISTORICAL SITE
- POINTS OF INTEREST
- POST OFFICE
- STATE FOREST
- LIGHTHOUSE
- MOUNTAIN SUMMIT
- MOUNTAIN GAP
- OVERLOOK
- REST AREA
- VISITOR CTR. REST AREA
- WELCOME CTR. REST AREA
- AIRPORT
- MILITARY AIRPORT

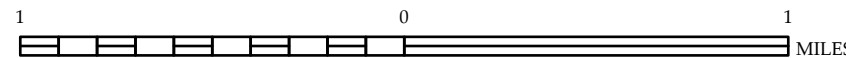
- NATIONAL / STATE FOREST BOUNDARY
- WILDLIFE REFUGE
- NATIONAL / STATE PARK BOUNDARY
- GAME LANDS BOUNDARY
- MILITARY RESERVATION BOUNDARY
- INDIAN RESERVATION BOUNDARY



## CHATHAM COUNTY NORTH CAROLINA

PREPARED BY THE  
NORTH CAROLINA DEPARTMENT OF TRANSPORTATION  
OPERATIONS PROGRAM MANAGEMENT UNIT - MAPPING SECTION  
IN COOPERATION WITH THE  
U.S. DEPARTMENT OF TRANSPORTATION  
FEDERAL HIGHWAY ADMINISTRATION

SCALE

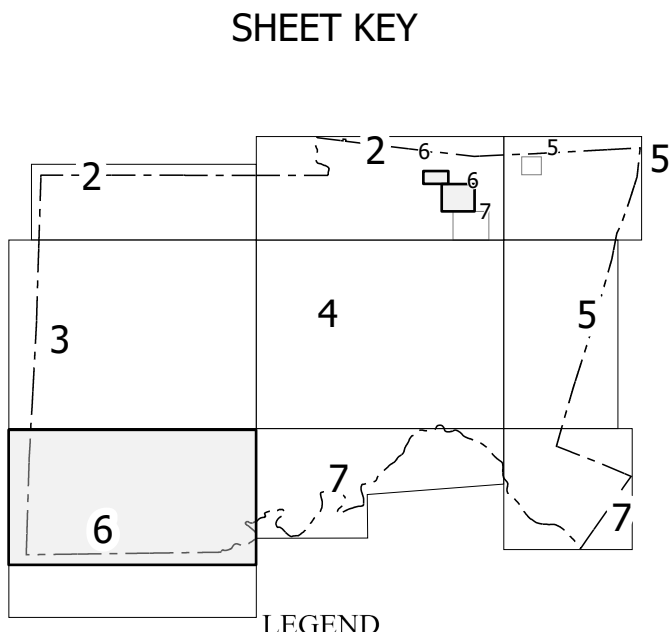
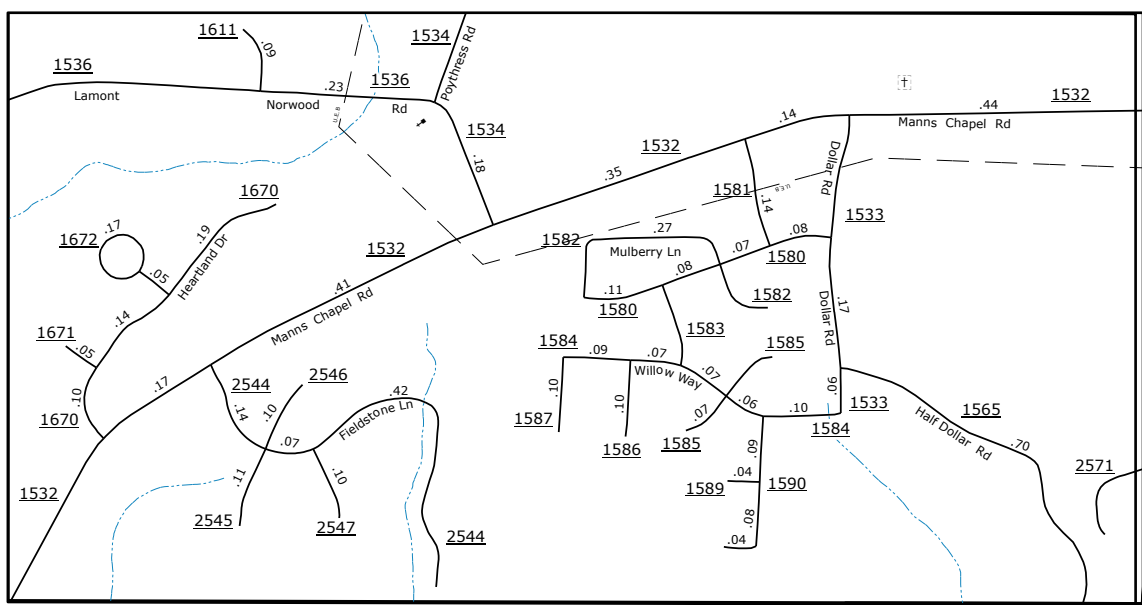
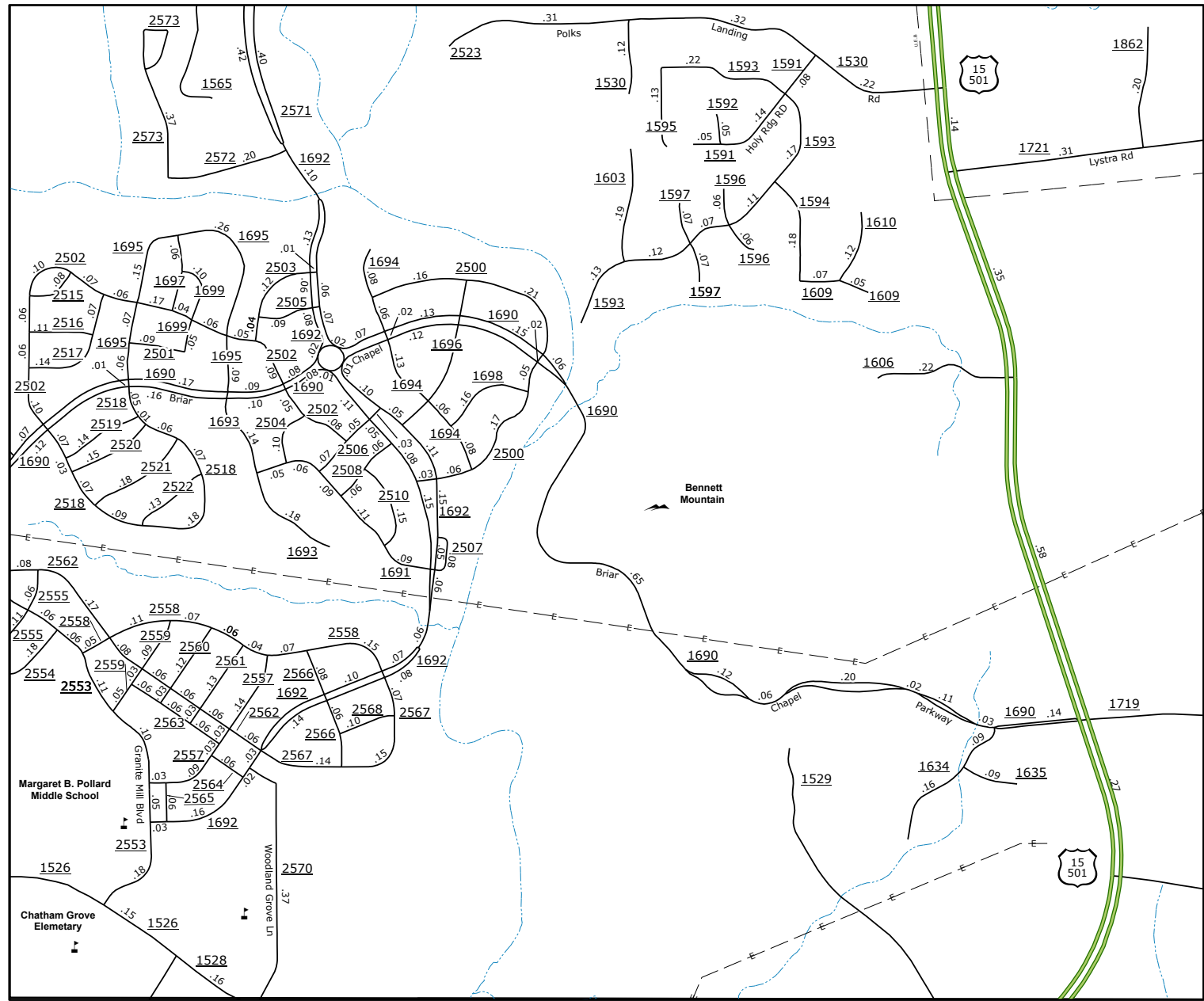
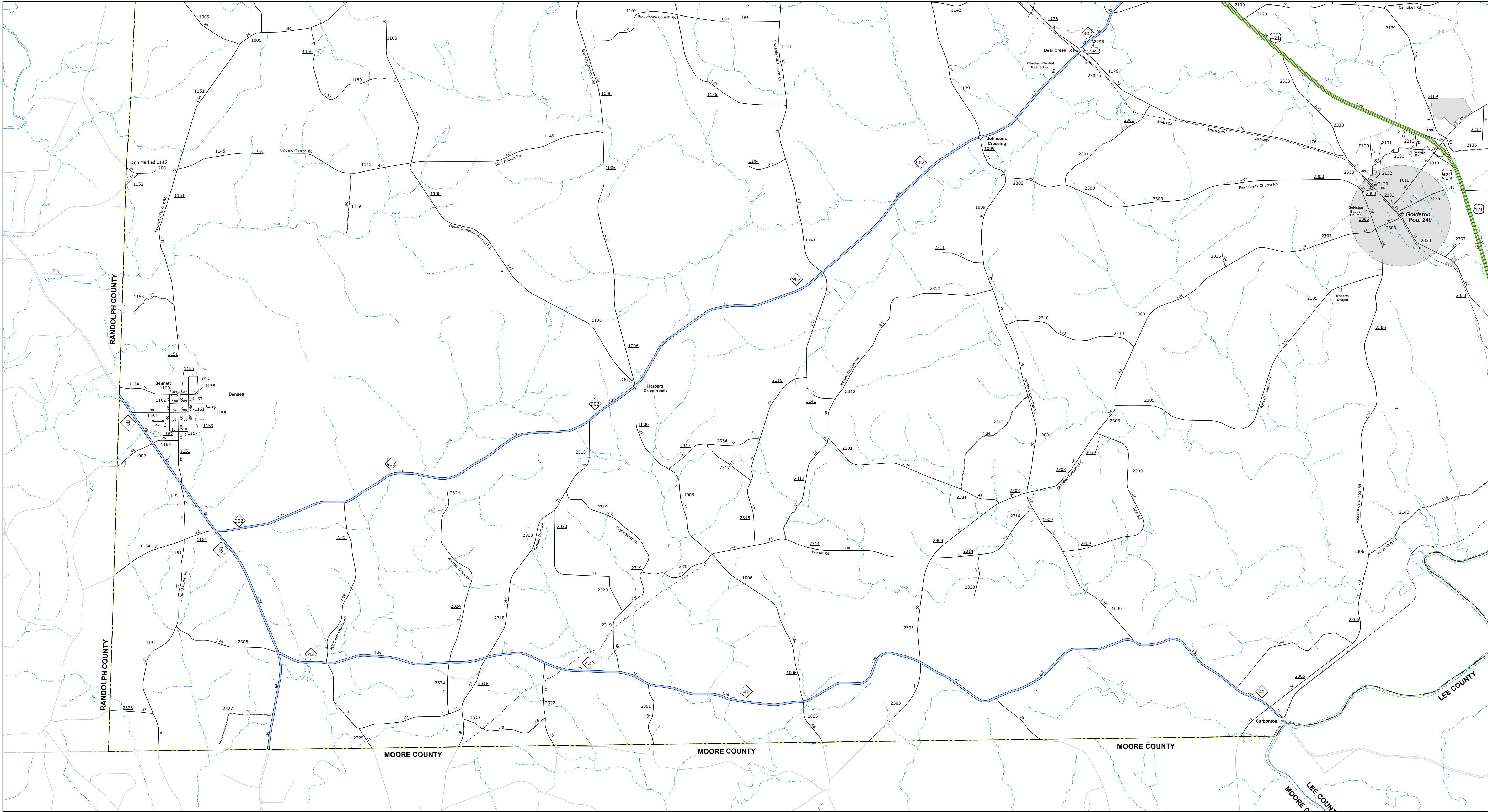


NORTH CAROLINA PLANE COORDINATE SYSTEM  
LAMBERT CONFORMAL CONIC PROJECTION

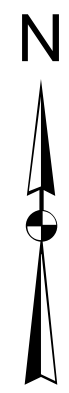
SHEET 5 of 7



TRADE OF USE: The Mapping Section is responsible for the accuracy and content of the map. The data is derived from numerous sources with varying levels of accuracy and map accuracy standards. As a result, the accuracy, content, and completeness of the map cannot be guaranteed. The information shown on the map is for informational purposes only and should not be used for legal or financial purposes. For digital copies of this map or additional map products, visit [www.ncdot.gov/transportation/Mapping/Products](http://www.ncdot.gov/transportation/Mapping/Products).



- LEGEND**
- INTERSTATE US NC Divided Hwy Undivided Hwy
  - BLUE RIDGE PARKWAY
  - UNPAVED SURFACED ROAD
  - HARD SURFACED ROAD
  - NON-SYSTEM ROAD
  - PROVISIONALLY DRAWN ROAD
  - PROTECTED LOCATION
  - INTERSECTION DISTANCE
  - STANDARD ROAD BRIDGE
  - RAILROAD BRIDGE
  - DRAW SPAN ON BRIDGE
  - PEDESTRIAN BRIDGE
  - PEDESTRIAN WALKWAY
  - PEDESTRIAN UNDERPASS
  - VEHICULAR UNDERPASS
  - TUNNEL
  - CULVERT
  - PIPE
  - INTERSTATE HIGHWAY
  - U.S. NUMBERED HIGHWAY
  - N.C. NUMBERED HIGHWAY
  - U.S. NUMBERED BI-CYCLE ROUTE
  - N.C. NUMBERED BI-CYCLE ROUTE
  - INTERSTATE INTERCHANGE NUMBER
  - SECONDARY ROAD NUMBER
  - TELEPHONE POLE
  - UTILITY LINES
  - RAILROAD LINE
  - RAILROAD STATION
  - INSET AREA
  - STATE LINE
  - COUNTY LINE
  - SMOOTHED URBAN BOUNDARIES
  - CITY LIMITS
  - FERRY RAMP AND RAMP
  - NARROW CREEK OR STREAM
  - WIDE RIVER OR CREEK
  - RESERVOIR, POND OR LAKE W/ ISLAND
  - DAM OR DAM WITH LOCK
  - WATERFALL
  - SWAMP
  - COMMUNITY
  - COUNTY SEAT
  - SCHOOL
  - COLLEGE OR UNIVERSITY
  - HOSPITAL
  - COAST GUARD STATION
  - CHURCH
  - CHURCH WITH CEMETERY
  - CEMETERY
  - PATROL STATION
  - CORRECTION OR PENAL INSTITUTION
  - QUARRY
  - MINE OR PIT
  - HIGHWAY GARAGE OR MAINT. YARD
  - HIGHWAY DIV. OR DIST. OFFICE
  - MILITARY POST
  - WEIGH STATION
  - FAIRGROUNDS
  - HISTORICAL SITE
  - POINTS OF INTEREST
  - POST OFFICE
  - STATE FOREST
  - LIGHTHOUSE
  - MOUNTAIN SUMMIT
  - MOUNTAIN GAP
  - OVERLOOK
  - REST AREA
  - VISITOR CTR/REST AREA
  - WELCOME CTR/REST AREA
  - AIRPORT
  - MILITARY AIRPORT
  - NATIONAL / STATE FOREST BOUNDARY
  - WILDLIFE REFUGE
  - NATIONAL / STATE PARK BOUNDARY
  - GAME LANDS BOUNDARY
  - MILITARY RESERVATION BOUNDARY
  - INDIAN RESERVATION BOUNDARY



## CHATHAM COUNTY NORTH CAROLINA

PREPARED BY THE  
NORTH CAROLINA DEPARTMENT OF TRANSPORTATION  
OPERATIONS PROGRAM MANAGEMENT UNIT - MAPPING SECTION  
IN COOPERATION WITH THE  
U.S. DEPARTMENT OF TRANSPORTATION  
FEDERAL HIGHWAY ADMINISTRATION

SCALE  
1 0 1  
MILES

NORTH CAROLINA PLANE COORDINATE SYSTEM  
LAMBERT CONFORMAL CONIC PROJECTION

SHEET 6 of 7

COPIES OF THIS MAP ARE AVAILABLE TO THE  
PUBLIC AT AN ANNUAL COST CONTACT US TO ORDER  
1-800-368-3346  
(919) 844-4360



TRAFFIC OF LIFE: The Mapping Section is committed to providing accurate and current information. The data is compiled from numerous sources with varying dates of publication and map accuracy standards. As a result, the accuracy, currency and completeness of the information shown on this map cannot be guaranteed. The information shown on this map was last updated in January 2020. For digital copies of this map or additional map products, visit <https://www.ncdot.gov/Information/MapProducts/Pages/MapProducts.aspx>

