

LEGEND

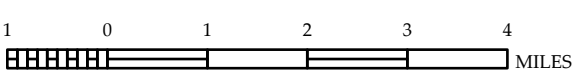
- INTERSTATE US NC
- UNPAVED PARKWAY
- UNPAVED SURFACED ROAD
- PAVED SURFACED ROAD
- NON-SYSTEM ROAD
- PROVISIONALLY PAVED ROAD
- PROMOTED LOCATION
- INTERSECTION DISTANCE
- STANDARD ROAD BRIDGE
- RAILROAD BRIDGE
- DRAWN OR BRIDGE
- PEDESTRIAN BRIDGE
- PEDESTRIAN UNDERPASS
- VEHICULAR UNDERPASS
- TUNNEL
- CULVERT
- PIKE
- INTERSTATE HIGHWAY
- U.S. NUMBERED HIGHWAY
- N.C. NUMBERED HIGHWAY
- U.S. NUMBERED BI-CYCLE ROUTE
- N.C. NUMBERED BI-CYCLE ROUTE
- INTERSTATE INTERCHANGE NUMBER
- SECONDARY ROAD NUMBER
- UTILITY LINES
- RAILROAD LINE
- RAILROAD STATION
- INSURANCE AREA
- STATE LINE
- COUNTY LINE
- SMOOTHED URBAN BOUNDARIES
- CITY LIMITS
- FERRY ROUTE AND RAMP
- NARROW CREEK OR STREAM
- WIDE RIVER OR CREEK
- RESERVOIR, POND OR LAKE W/ ISLAND
- DAM OR DAM WITH LOCK
- WATERFALL
- SWAMP
- COUNTY SEAT
- SCHOOL
- COLLEGE OR UNIVERSITY
- HOSPITAL
- COAST GUARD STATION
- CHURCH
- CHURCH WITH CEMETERY
- CEMETERY
- PARK STATION
- CORRECTION OR PENAL INSTITUTION
- QUARRY
- MINE OR PIT
- ROADWAY GARAGE OR MAINT. YARD
- ROADWAY DIV. OR DIST. OFFICE
- MILITARY POST
- WELSH STATION
- FAIRGROUNDS
- HISTORICAL SITE
- POINTS OF INTEREST
- POST OFFICE
- STATE FOREST
- LIGHTHOUSE
- MOUNTAIN SUMMIT
- MOUNTAIN GAP
- OVERLOOK
- REST AREA
- VISITOR CENTER AREA
- WELCOME CENTER AREA
- AIRPORT
- MILITARY AIRPORT
- NATIONAL STATE FOREST BOUNDARY
- WILDLIFE REFUGE
- NATIONAL STATE PARK BOUNDARY
- GAME LANDS BOUNDARY
- MILITARY RESERVATION BOUNDARY
- INDIAN RESERVATION BOUNDARY



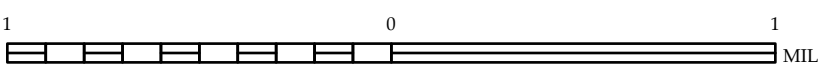
BURKE COUNTY
NORTH CAROLINA

PREPARED BY THE
NORTH CAROLINA DEPARTMENT OF TRANSPORTATION
OPERATIONS PROGRAM MANAGEMENT UNIT - MAPPING SECTION
IN COOPERATION WITH THE
U.S. DEPARTMENT OF TRANSPORTATION
FEDERAL HIGHWAY ADMINISTRATION

SCALE



SCALE FOR ENLARGEMENTS



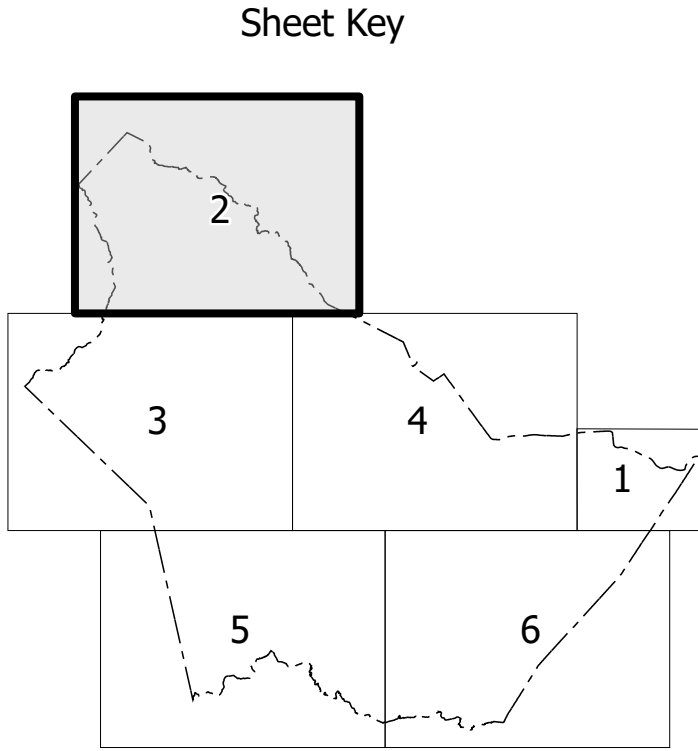
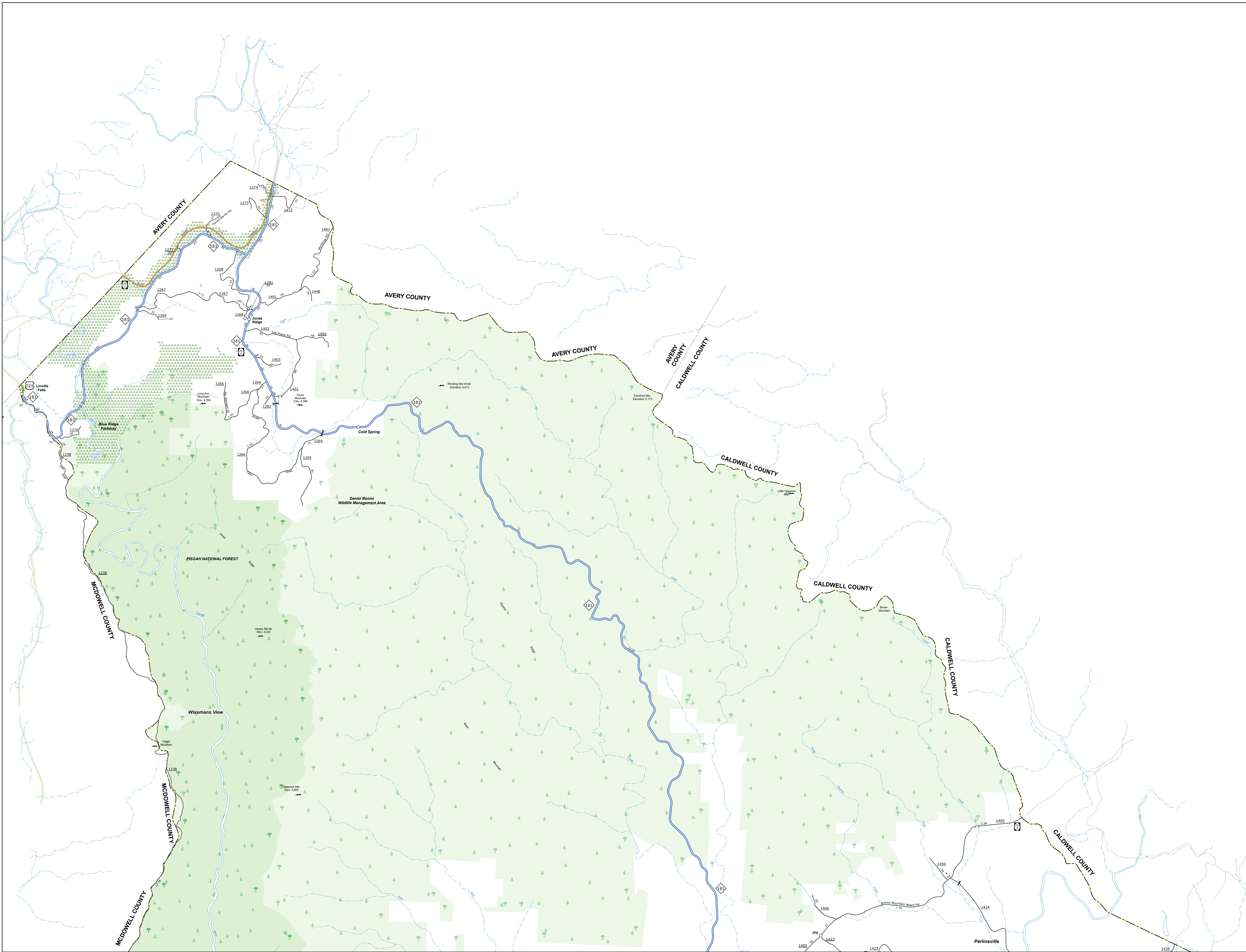
NORTH CAROLINA PLANE COORDINATE SYSTEM
LAMBERT CONFORMAL CONIC PROJECTION

COPIES OF THIS MAP ARE AVAILABLE TO THE
PUBLIC AT NO CHARGE. CONTACT US TO ORDER
maps@ncdot.gov
https://www.ncdot.gov/resources/State-Mapping/Pages/Ordering-Maps.aspx
(919) 834-8480

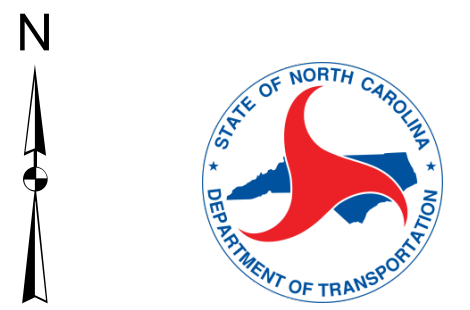
TERMS OF USE: The Mapping Section's goal is to provide the most accurate and current information possible. Map data is compiled from numerous sources with varying dates of publication and map accuracy standards. As a result, the accuracy, currency, and completeness of the data provided will vary. The North Carolina Department of Transportation shall not be held liable for any errors in the map data. This map cannot be construed to be a legal document. The information shown on this map was last updated in May 2025. For digital copies of this map or additional map products, visit <https://www.ncdot.gov/resources/State-Mapping>.

TERMS OF USE: The Mapping Section's goal is to provide the most accurate and current information possible. Map data is compiled from numerous sources with varying levels of participation and map accuracy standards. As a result, the accuracy, currency and completeness of the information cannot be guaranteed. The information shown on this map was last updated in May 2023. The information shown on this map is for informational purposes only and is not intended to be used for legal or financial purposes.

COPIES OF THIS MAP ARE AVAILABLE TO THE PUBLIC AT NOMINAL COST. CONTACT US TO ORDER: burkecounty@ncdot.gov or [919-733-8000](tel:9197338000). <https://www.ncdot.gov/MapServices/State-Map-Shop/Default.aspx>

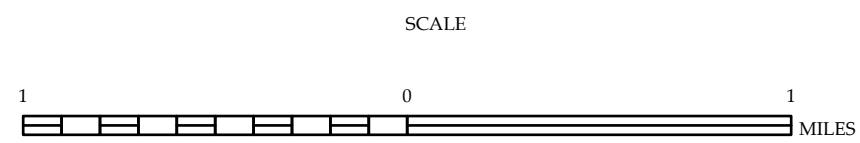


- LEGEND**
- INTERSTATE: US, NC, Divided Hwy, Undivided Hwy
 - BLUE RIDGE PARKWAY
 - UNPAVED SURFACED ROAD
 - ROAD SURFACED ROAD
 - NON-SYSTEM ROAD
 - PROPOSED LOCATION
 - PROPOSED LOCATION
 - INTERSECTION DISTANCE
 - STANDARD ROAD - BRIDGE
 - RAILROAD BRIDGE
 - DRUM-SPAN OR BRIDGE
 - PEDESTRIAN BRIDGE
 - PEDESTRIAN UNDERPASS
 - VEHICULAR UNDERPASS
 - TUNNEL
 - CULVERT
 - PIPE
 - INTERSTATE HIGHWAY
 - U.S. NUMBERED HIGHWAY
 - N.C. NUMBERED HIGHWAY
 - U.S. NUMBERED BICYCLE ROUTE
 - N.C. NUMBERED BICYCLE ROUTE
 - INTERSTATE INTERCHANGE NUMBER
 - SECONDARY ROAD NUMBER
 - UTILITY LINES
 - RAILROAD LINE
 - RAILROAD STATION
 - INSET AREA
 - STATE LINE
 - COUNTY LINE
 - SMOOTHED URBAN BOUNDARIES
 - CITY LIMITS
 - FERRY ROUTE AND HAMPS
 - NARROW CREEK OR STREAM
 - WIDE RIVER OR CREEK
 - RECREATION, POND OR LAKE W/ ISLAND
 - DAM OR DAM WITH LOCK
 - WATERFALL
 - GRAP
 - COMMUNITY
 - COUNTY SEAT
 - SCHOOL
 - COLLEGE OR UNIVERSITY
 - HOSPITAL
 - COAST GUARD STATION
 - CHURCH
 - CHURCH WITH CEMETERY
 - CEMETERY
 - POLICE STATION
 - CORRECTION OR PENAL INSTITUTION
 - QUARRY
 - MINE OR PIT
 - HIGHWAY GARAGE OR MAINT. YARD
 - HIGHWAY DIV. OR DIST. OFFICE
 - MILITARY POST
 - WEIGH STATIONS
 - FARMSTANDS
 - HISTORICAL SITE
 - POINTE OF INTEREST
 - POST OFFICE
 - STATE FOREST
 - LIGHTHOUSE
 - MOUNTAIN SUMMIT
 - MOUNTAIN GAP
 - OVERLOOK
 - REST AREA
 - VISITOR CENTER AREA
 - WELCOME CENTER AREA
 - AIRPORT
 - MILITARY AIRPORT
 - NATIONAL STATE FOREST BOUNDARY
 - WILDLIFE REFUGE
 - NATIONAL STATE PARK BOUNDARY
 - GAME LANDS BOUNDARY
 - MILITARY RESERVATION BOUNDARY
 - INDIAN RESERVATION BOUNDARY



BURKE COUNTY NORTH CAROLINA

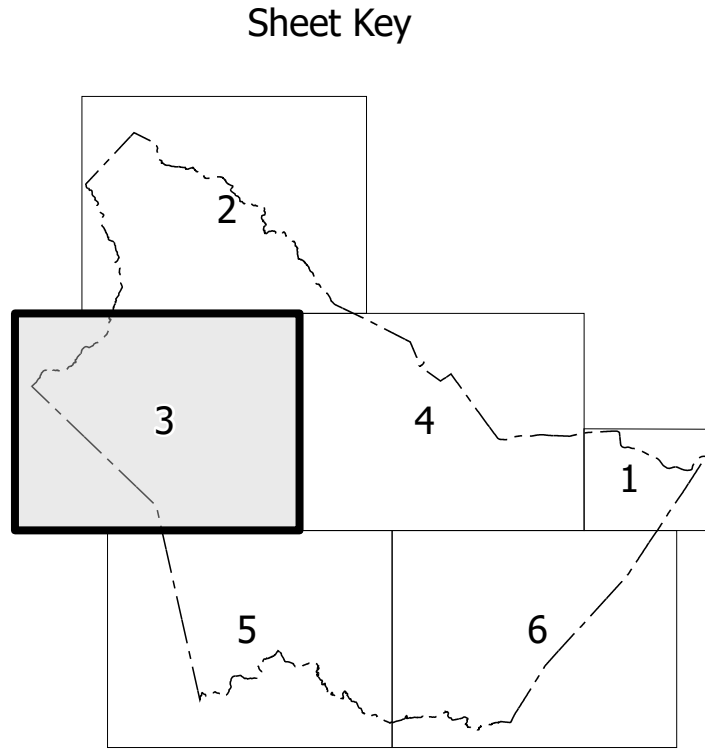
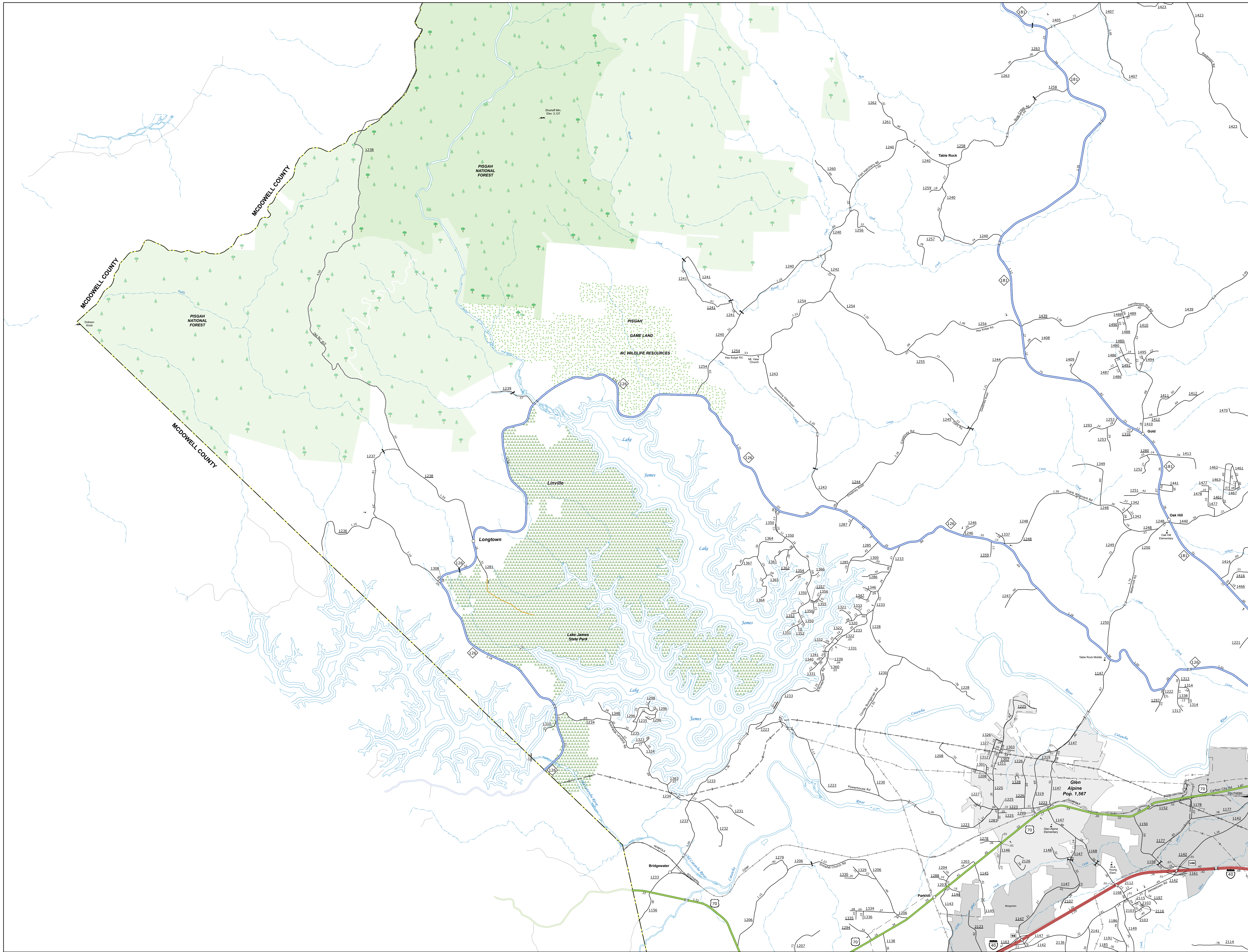
PREPARED BY THE
NORTH CAROLINA DEPARTMENT OF TRANSPORTATION
OPERATIONS PROGRAM MANAGEMENT UNIT - MAPPING SECTION
IN COOPERATION WITH THE
U.S. DEPARTMENT OF TRANSPORTATION
FEDERAL HIGHWAY ADMINISTRATION



NORTH CAROLINA PLANE COORDINATE SYSTEM
LAMBERT CONFORMAL CONIC PROJECTION

TERMS OF USE: The Mapping Section's goal is to provide the most accurate and current information possible. Map data is compiled from numerous sources with varying levels of participation and map accuracy. As a result, the accuracy, currency, and completeness of the information cannot be guaranteed. The information shown on this map was last updated in May 2023. The information shown on this map is for informational purposes only and should not be used for legal or financial purposes.

COPIES OF THIS MAP ARE AVAILABLE TO THE PUBLIC AT NOMINAL COST. CONTACT US TO ORDER: burkecounty@ncdot.gov or [704/388-7200](tel:704/388-7200). <https://www.ncdot.gov/transportation/Mapping/Products/Map.aspx>



LEGEND

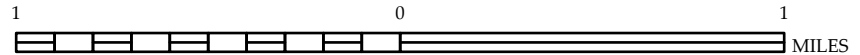
- INTERSTATE US NC
- US Divided Hwy
- US Unimproved Hwy
- BLUE RIDGE PARKWAY
- UNPAVED SURFACED ROAD
- ROAD SURFACED ROAD
- NON-SYSTEM ROAD
- PROPOSED LOCATION
- INTERSECTION DISTANCE
- STANDARD ROAD BRIDGE
- RAILROAD BRIDGE
- DRUM-SPAN OR BRIDGE
- PEDESTRIAN BRIDGE
- PEDESTRIAN WALKWAY
- PEDESTRIAN UNDERPASS
- VEHICULAR UNDERPASS
- TUNNEL
- CULVERT
- PIPE
- INTERSTATE HIGHWAY
- US NUMBERED HIGHWAY
- N.C. NUMBERED HIGHWAY
- U.S. NUMBERED BICYCLE ROUTE
- N.C. NUMBERED BICYCLE ROUTE
- INTERSTATE INTERCHANGE NUMBER
- SECONDARY ROAD NUMBER
- UTILITY LINES
- RAILROAD LINE
- RAILROAD STATION
- INSET AREA
- STATE LINE
- COUNTY LINE
- SMOOTHED URBAN BOUNDARIES
- CITY LIMITS
- FERRY ROUTE AND RAMP
- NARROW CREEK OR STREAM
- WIDE RIVER OR CREEK
- RECREATION, POND OR LAKE W/ ISLAND
- DAM OR DAM WITH LOCK
- WATERFALL
- SWAMP
- COMMUNITY
- COUNTY SEAT
- SCHOOL
- COLLEGE OR UNIVERSITY
- HOSPITAL
- CONVENT GUARD STATION
- CHURCH
- CHURCH WITH CEMETERY
- CEMETERY
- POTENTIAL SITE
- CORRECTION OR PENAL INSTITUTION
- QUARRY
- MINE OR PIT
- HIGHWAY GARAGE OR MAINT. YARD
- HIGHWAY DIV. OR DIST. OFFICE
- MILITARY POST
- WEIGH STATION
- FARMSTEAD
- HISTORICAL SITE
- PORT OF INTEREST
- POST OFFICE
- STATE FOREST
- LIGHTHOUSE
- MOUNTAIN SUMMIT
- MOUNTAIN GAP
- OVERLOOK
- REST AREA
- WELCOME CENTER AREA
- WELCOME CENTER AREA
- AIRPORT
- MILITARY AIRPORT
- NATIONAL STATE FOREST BOUNDARY
- WILDLIFE REFUGE
- NATIONAL STATE PARK BOUNDARY
- GAME LANDS BOUNDARY
- MILITARY RESERVATION BOUNDARY
- INDIAN RESERVATION BOUNDARY



BURKE COUNTY
NORTH CAROLINA

PREPARED BY THE
NORTH CAROLINA DEPARTMENT OF TRANSPORTATION
OPERATIONS PROGRAM MANAGEMENT UNIT - MAPPING SECTION
IN COOPERATION WITH THE
U.S. DEPARTMENT OF TRANSPORTATION
FEDERAL HIGHWAY ADMINISTRATION

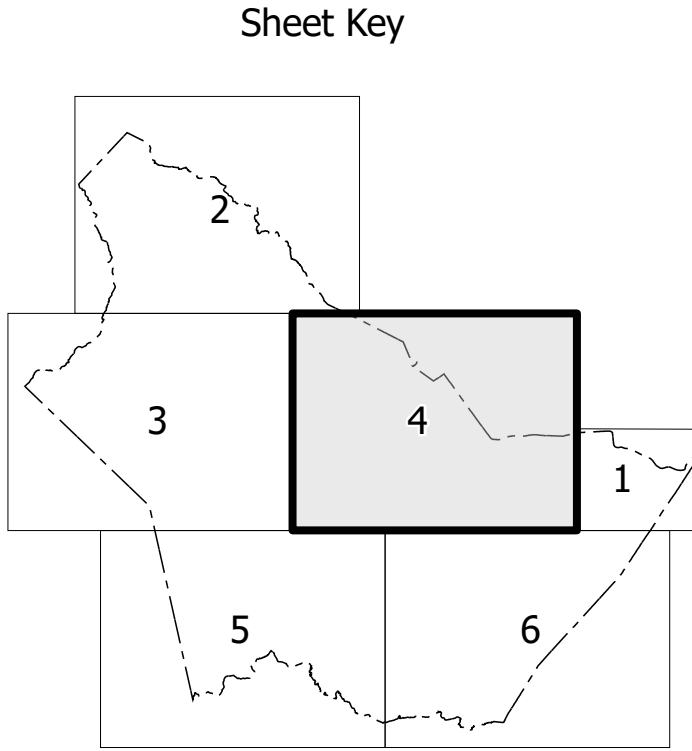
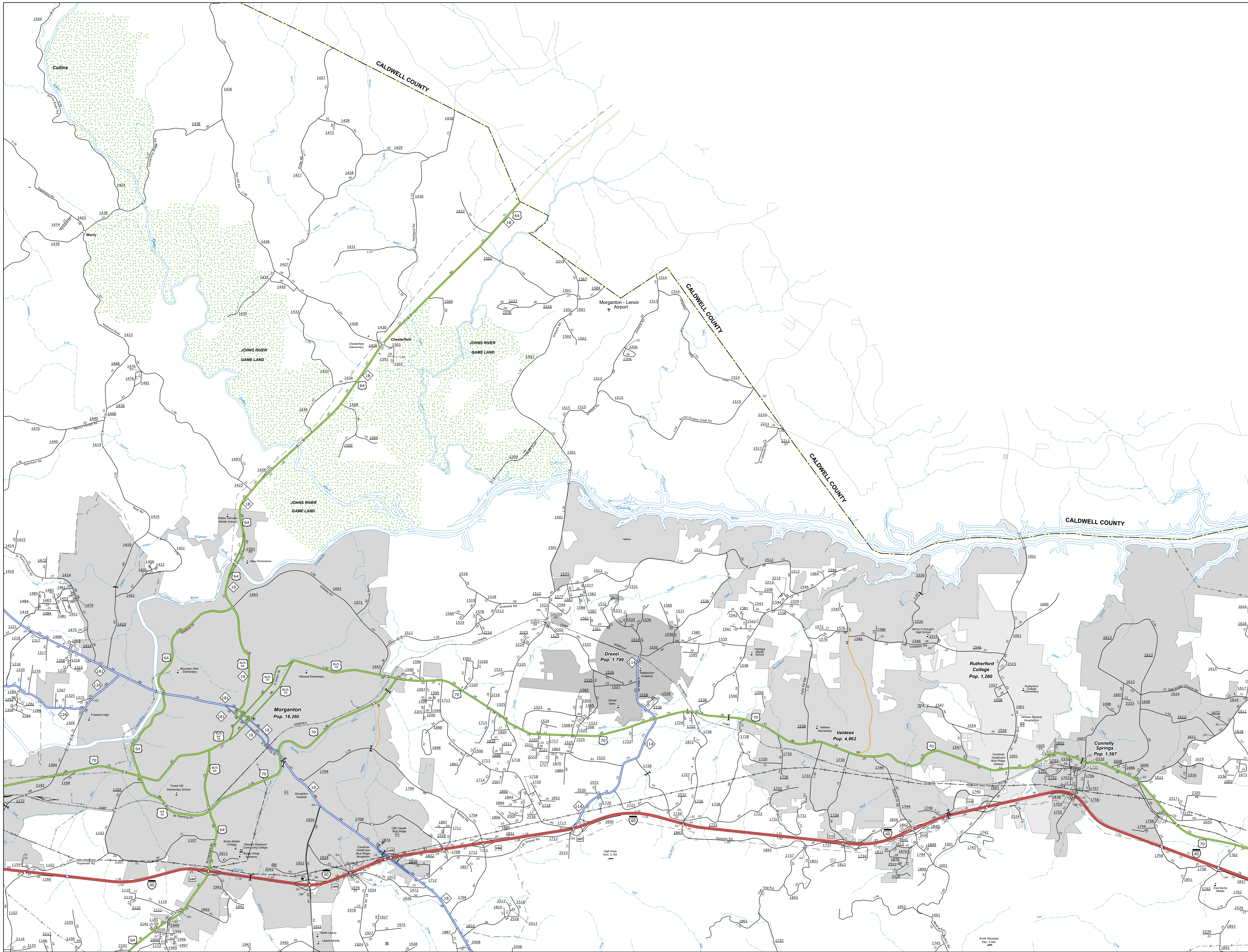
SCALE



NORTH CAROLINA PLANE COORDINATE SYSTEM
LAMBERT CONFORMAL CONIC PROJECTION

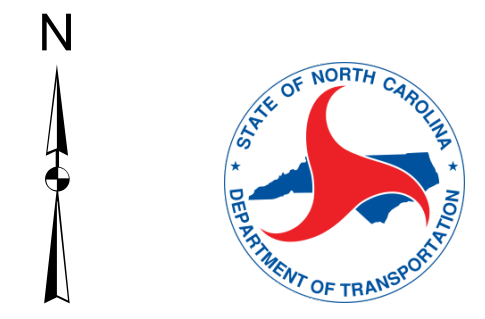
TERMS OF USE: The Mapping Section's goal is to provide the most accurate and current information possible. Map data is compiled from numerous sources with varying levels of participation and map accuracy. As a result, the accuracy, currency, and completeness of the information cannot be guaranteed. The information shown on this map was last updated in May 2023. The information shown on this map is for informational purposes only and should not be used for legal or financial purposes.

COPIES OF THIS MAP ARE AVAILABLE TO THE PUBLIC AT NO CHARGE. CONTACT US TO ORDER: burkecounty@ncdot.gov or call 800-447-7227.



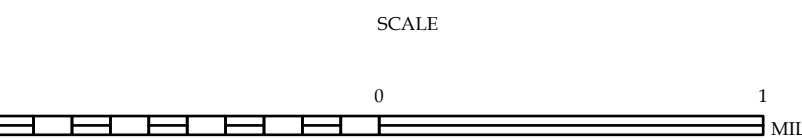
LEGEND

- INTERSTATE: US, NC, Divided Hwy, Undivided Hwy
- BLUE RIDGE PARKWAY
- UNPAVED SURFACED ROAD
- ROAD SURFACED ROAD
- NON-SYSTEM ROAD
- PROPOSED/NOT DRAWN ROAD
- PROPOSED LOCATION
- INTERSECTION DISTANCE
- STANDARD ROAD BRIDGE
- RAILROAD BRIDGE
- DRUM-SPAN OR BRIDGE
- PEDESTRIAN BRIDGE
- PEDESTRIAN WALKWAY
- VEHICULAR UNDERPASS
- TUNNEL
- CULVERT
- PIPE
- INTERSTATE HIGHWAY
- U.S. NUMBERED HIGHWAY
- N.C. NUMBERED HIGHWAY
- U.S. NUMBERED BICYCLE ROUTE
- N.C. NUMBERED BICYCLE ROUTE
- INTERSTATE INTERCHANGE NUMBER
- SECONDARY ROAD NUMBER
- UTILITY LINES
- RAILROAD LINE
- RAILROAD STATION
- INSIDE AREA
- STATE LINE
- COUNTY LINE
- SMOOTHED URBAN BOUNDARIES
- CITY LIMITS
- FERRY ROUTE AND HAMPS
- NARROW CREEK OR STREAM
- WIDE RIVER OR CREEK
- RECREATION, POND OR LAKE W/ ISLAND
- DAM OR DAM WITH LOCK
- WATERFALL
- SWAMP
- COMMUNITY
- COUNTY SEAT
- SCHOOL
- COLLEGE OR UNIVERSITY
- HOSPITAL
- COAST GUARD STATION
- CHURCH
- CHURCH WITH CEMETERY
- CEMETERY
- POLICE STATION
- CORRECTION OR PENAL INSTITUTION
- QUARRY
- MINE OR PIT
- HIGHWAY GARAGE OR MAINT. YARD
- HIGHWAY DIV. OR DIST. OFFICE
- MILITARY POST
- WEIGH STATION
- FAIRGROUND
- HISTORICAL SITE
- POINTS OF INTEREST
- POST OFFICE
- STATE FOREST
- LIGHTHOUSE
- MOUNTAIN SUMMIT
- MOUNTAIN GAP
- OVERLOOK
- REST AREA
- VISITOR CENTER AREA
- WELCOME CENTER AREA
- AIRPORT
- MILITARY AIRPORT
- NATIONAL STATE FOREST BOUNDARY
- WILDLIFE REFUGE
- NATIONAL STATE PARK BOUNDARY
- GAME LANDS BOUNDARY
- MILITARY RESERVATION BOUNDARY
- INDIAN RESERVATION BOUNDARY



BURKE COUNTY
NORTH CAROLINA

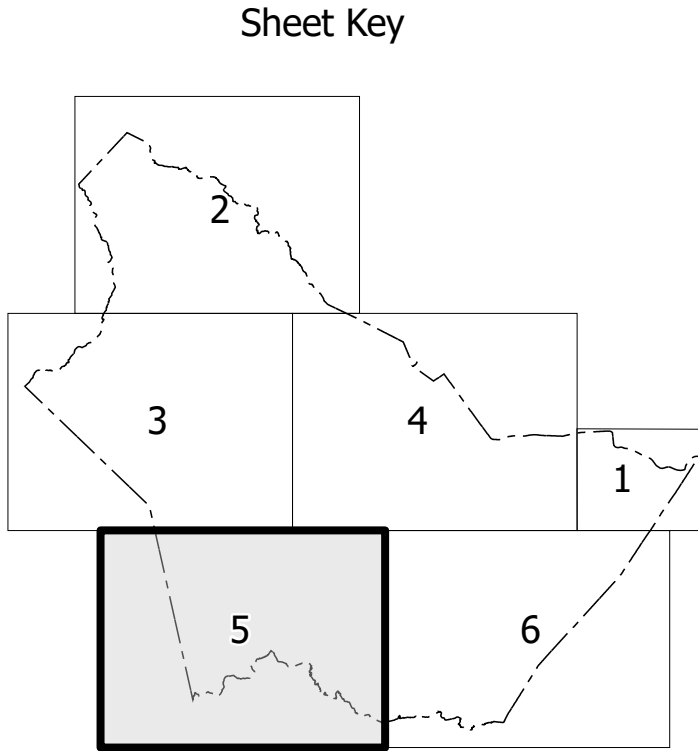
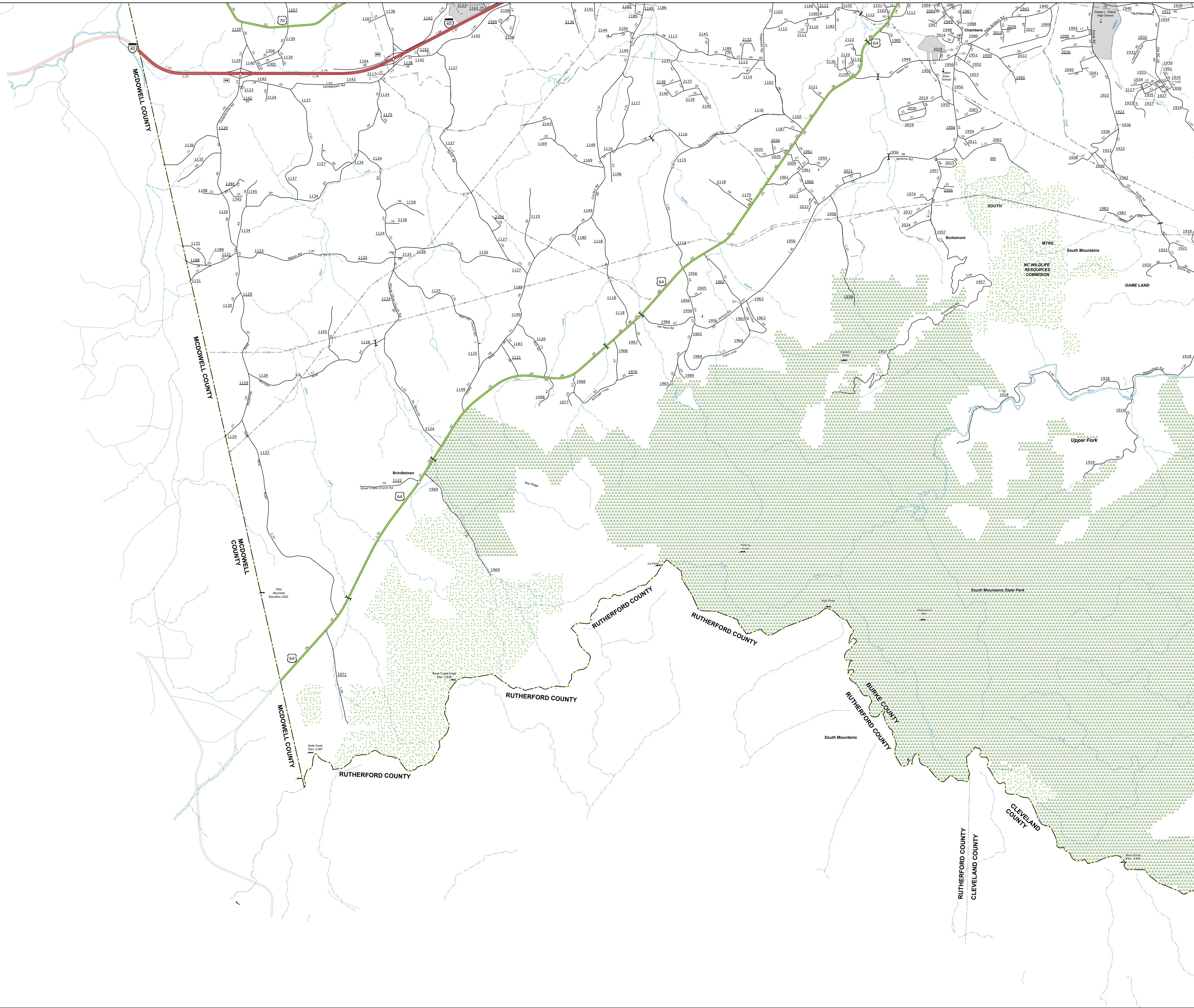
PREPARED BY THE
NORTH CAROLINA DEPARTMENT OF TRANSPORTATION
OPERATIONS PROGRAM MANAGEMENT UNIT - MAPPING SECTION
IN COOPERATION WITH THE
U.S. DEPARTMENT OF TRANSPORTATION
FEDERAL HIGHWAY ADMINISTRATION



NORTH CAROLINA PLANE COORDINATE SYSTEM
LAMBERT CONFORMAL CONIC PROJECTION

TERMS OF USE: The Mapping Section's goal is to provide the most accurate and current information possible. Map data is compiled from numerous sources with varying levels of participation and map accuracy standards. As a result, the accuracy, currency, and completeness of the information cannot be guaranteed. The information shown on this map was last updated in May 2023. The information shown on this map is for informational purposes only and should not be used for legal or financial purposes.

COPIES OF THIS MAP ARE AVAILABLE TO THE PUBLIC AT NOMINAL COST. CONTACT US TO ORDER: maps@ncdot.gov or [919.733.2000](tel:9197332000). For more information, visit <https://www.ncdot.gov/transportation/Mapping/Products/Map.aspx>.

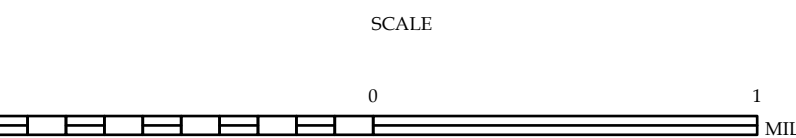


- LEGEND**
- INTERSTATE: I-40, I-77, I-85, I-95
 - US: US-421, US-158
 - NC: NC-100, NC-160, NC-226, NC-242, NC-259, NC-271, NC-281, NC-292, NC-301, NC-311, NC-321, NC-331, NC-341, NC-351, NC-361, NC-371, NC-381, NC-391, NC-401, NC-411, NC-421, NC-431, NC-441, NC-451, NC-461, NC-471, NC-481, NC-491, NC-501, NC-511, NC-521, NC-531, NC-541, NC-551, NC-561, NC-571, NC-581, NC-591, NC-601, NC-611, NC-621, NC-631, NC-641, NC-651, NC-661, NC-671, NC-681, NC-691, NC-701, NC-711, NC-721, NC-731, NC-741, NC-751, NC-761, NC-771, NC-781, NC-791, NC-801, NC-811, NC-821, NC-831, NC-841, NC-851, NC-861, NC-871, NC-881, NC-891, NC-901, NC-911, NC-921, NC-931, NC-941, NC-951, NC-961, NC-971, NC-981, NC-991
 - Divided Hwy: Divided Hwy
 - Unimproved Hwy: Unimproved Hwy
 - Blue Ridge Parkway: Blue Ridge Parkway
 - Unimproved Suburban Road: Unimproved Suburban Road
 - Unimproved Suburban Road: Unimproved Suburban Road
 - Non-System Road: Non-System Road
 - Proposed/Not Drawn Road: Proposed/Not Drawn Road
 - Projected Location: Projected Location
 - Interstate Distance: Interstate Distance
 - Standard Road Bridge: Standard Road Bridge
 - Railroad Bridge: Railroad Bridge
 - Drawn Span or Bridge: Drawn Span or Bridge
 - Pedestrian Bridge: Pedestrian Bridge
 - Pedestrian Walkway: Pedestrian Walkway
 - Pedestrian Underpass: Pedestrian Underpass
 - Vehicle Underpass: Vehicle Underpass
 - Tunnel: Tunnel
 - Culvert: Culvert
 - Pipe: Pipe
 - Interstate Highway: Interstate Highway
 - US Numbered Highway: US Numbered Highway
 - NC Numbered Highway: NC Numbered Highway
 - US Numbered Bicycle Route: US Numbered Bicycle Route
 - NC Numbered Bicycle Route: NC Numbered Bicycle Route
 - Interstate Interchange Number: Interstate Interchange Number
 - Secondary Road Number: Secondary Road Number
 - Utility Lines: Utility Lines
 - Railroad Line: Railroad Line
 - Railroad Station: Railroad Station
 - Inset Area: Inset Area
 - State Line: State Line
 - County Line: County Line
 - Smoothed Urban Boundaries: Smoothed Urban Boundaries
 - City Limits: City Limits
 - Ferry Route and Ramp: Ferry Route and Ramp
 - Narrow Creek or Stream: Narrow Creek or Stream
 - Wide River or Creek: Wide River or Creek
 - Recreation Pond or Lake w/ Island: Recreation Pond or Lake w/ Island
 - Dam or Dam with Lock: Dam or Dam with Lock
 - Waterfall: Waterfall
 - Grass: Grass
 - Community: Community
 - County Seat: County Seat
 - School: School
 - College or University: College or University
 - Hospital: Hospital
 - Const Guard Station: Const Guard Station
 - Church: Church
 - Church with Cemetery: Church with Cemetery
 - Cemetery: Cemetery
 - Police Station: Police Station
 - Correction or Penal Institution: Correction or Penal Institution
 - Quarry: Quarry
 - Mine or Pit: Mine or Pit
 - Highway Garage or Maint Yard: Highway Garage or Maint Yard
 - Highway Div or Dist Office: Highway Div or Dist Office
 - Military Post: Military Post
 - Weight Station: Weight Station
 - Fabrication: Fabrication
 - Historical Site: Historical Site
 - Point of Interest: Point of Interest
 - Post Office: Post Office
 - State Forest: State Forest
 - Lighthouse: Lighthouse
 - Mountain Summit: Mountain Summit
 - Mountain Gap: Mountain Gap
 - Overlook: Overlook
 - Rest Area: Rest Area
 - Visitor Center Area: Visitor Center Area
 - Welcome Center Area: Welcome Center Area
 - Airport: Airport
 - Military Airport: Military Airport
 - National State Forest Boundary: National State Forest Boundary
 - Wildlife Refuge: Wildlife Refuge
 - National State Park Boundary: National State Park Boundary
 - Game Lands Boundary: Game Lands Boundary
 - Military Reservation Boundary: Military Reservation Boundary
 - Indian Reservation Boundary: Indian Reservation Boundary



BURKE COUNTY NORTH CAROLINA

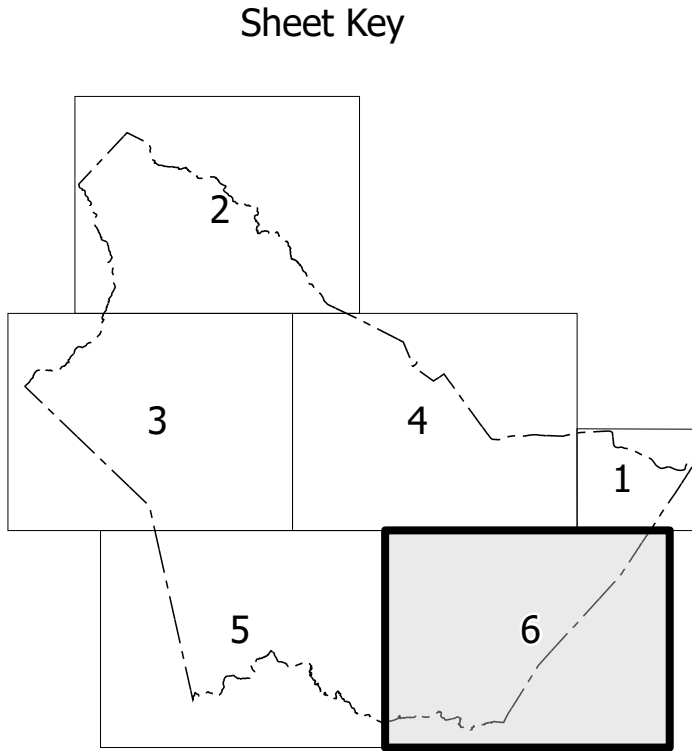
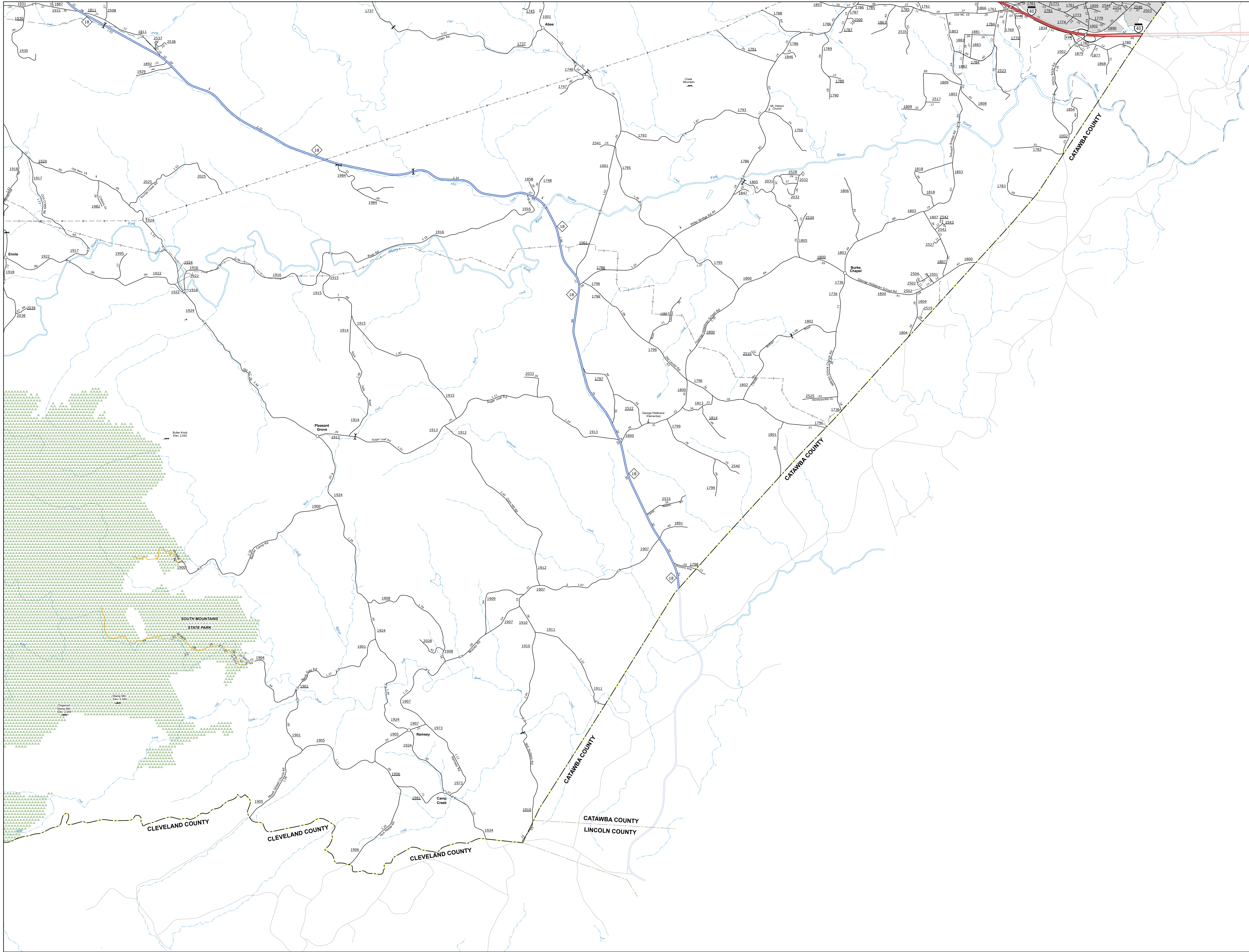
PREPARED BY THE
NORTH CAROLINA DEPARTMENT OF TRANSPORTATION
OPERATIONS PROGRAM MANAGEMENT UNIT - MAPPING SECTION
IN COOPERATION WITH THE
U.S. DEPARTMENT OF TRANSPORTATION
FEDERAL HIGHWAY ADMINISTRATION



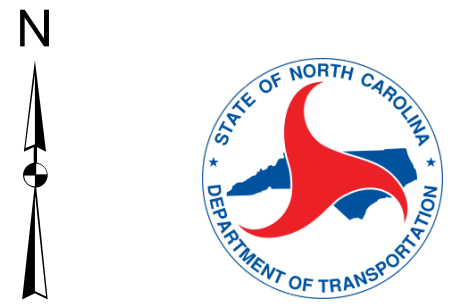
NORTH CAROLINA PLANE COORDINATE SYSTEM
LAMBERT CONFORMAL CONIC PROJECTION

TERMS OF USE: The Mapping Section's goal is to provide the most accurate and current information possible. Map data is compiled from numerous sources with varying degrees of participation and map accuracy. As a result, the accuracy, currency, and completeness of the information shown on this map cannot be guaranteed. The information shown on this map was last updated in May 2025. The information shown on this map is not intended to be used for navigation purposes. The information shown on this map is not intended to be used for navigation purposes.

COPIES OF THIS MAP ARE AVAILABLE TO THE PUBLIC AT NO CHARGE. TO ORDER: CONTACT THE NORTH CAROLINA DEPARTMENT OF TRANSPORTATION, DIVISION 13, DISTRICT 1, 1000 EAST 7TH STREET, RALEIGH, NC 27601. (919) 733-2000

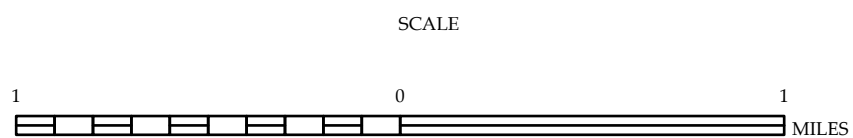


- LEGEND**
- INTERSTATE: US, NC, Divided Hwy, Undivided Hwy
 - BLUE RIDGE PARKWAY
 - UNPAVED SURFACED ROAD
 - ROAD SURFACED ROAD
 - NON-SYSTEM ROAD
 - PROPOSED LOCATION
 - INTERSECTION DISTANCE
 - STANDARD ROAD BRIDGE
 - RAILROAD BRIDGE
 - DRUM-SKIP OR BRIDGE
 - PEDESTRIAN WALKWAY
 - PEDESTRIAN UNDERPASS
 - VEHICULAR UNDERPASS
 - TUNNEL
 - CULVERT
 - PIPE
 - INTERSTATE HIGHWAY
 - U.S. NUMBERED HIGHWAY
 - N.C. NUMBERED HIGHWAY
 - U.S. NUMBERED BICYCLE ROUTE
 - N.C. NUMBERED BICYCLE ROUTE
 - INTERSTATE INTERCHANGE NUMBER
 - SECONDARY ROAD NUMBER
 - UTILITY LINES
 - RAILROAD LINE
 - RAILROAD STATION
 - STATE LINE
 - COUNTY LINE
 - SMOOTHED URBAN BOUNDARIES
 - CITY LIMITS
 - FERRY ROUTE AND HAMPS
 - NARROW CREEK OR STREAM
 - WIDE RIVER OR CREEK
 - RECREATION, POND OR LAKE W/ ISLAND
 - DAM OR DAM WITH LOCK
 - WATERFALL
 - GRAP
 - COMMUNITY
 - COUNTY SEAT
 - SCHOOL
 - COLLEGE OR UNIVERSITY
 - HOSPITAL
 - CONST. GUARD STATION
 - CHURCH
 - CHURCH WITH CEMETERY
 - CEMETERY
 - POLICE STATION
 - CORRECTION OR PENAL INSTITUTION
 - QUARRY
 - MINE OR PIT
 - HIGHWAY GARAGE OR MAINT. YARD
 - HIGHWAY DIV. OR DIST. OFFICE
 - MILITARY POST
 - WEIGH STATIONS
 - FABRICATIONS
 - HISTORICAL SITE
 - POINTE OF INTEREST
 - POST OFFICE
 - STATE FOREST
 - LIGHTHOUSE
 - MOUNTAIN SUMMIT
 - MOUNTAIN GAP
 - OVERLOOK
 - REST AREA
 - VISITOR CENTER REST AREA
 - WELCOME CENTER REST AREA
 - AIRPORT
 - MILITARY AIRPORT
 - NATIONAL STATE FOREST BOUNDARY
 - WILDLIFE REFUGE
 - NATIONAL STATE PARK BOUNDARY
 - GAME LANDS BOUNDARY
 - MILITARY RESERVATION BOUNDARY
 - INDIAN RESERVATION BOUNDARY



BURKE COUNTY NORTH CAROLINA

PREPARED BY THE
NORTH CAROLINA DEPARTMENT OF TRANSPORTATION
OPERATIONS PROGRAM MANAGEMENT UNIT - MAPPING SECTION
IN COOPERATION WITH THE
U.S. DEPARTMENT OF TRANSPORTATION
FEDERAL HIGHWAY ADMINISTRATION



NORTH CAROLINA PLANE COORDINATE SYSTEM
LAMBERT CONFORMAL CONIC PROJECTION