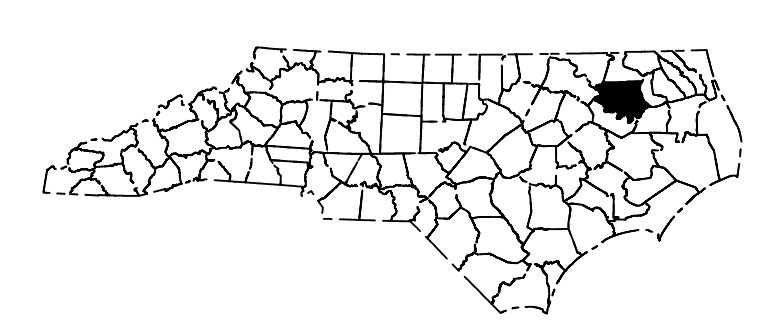


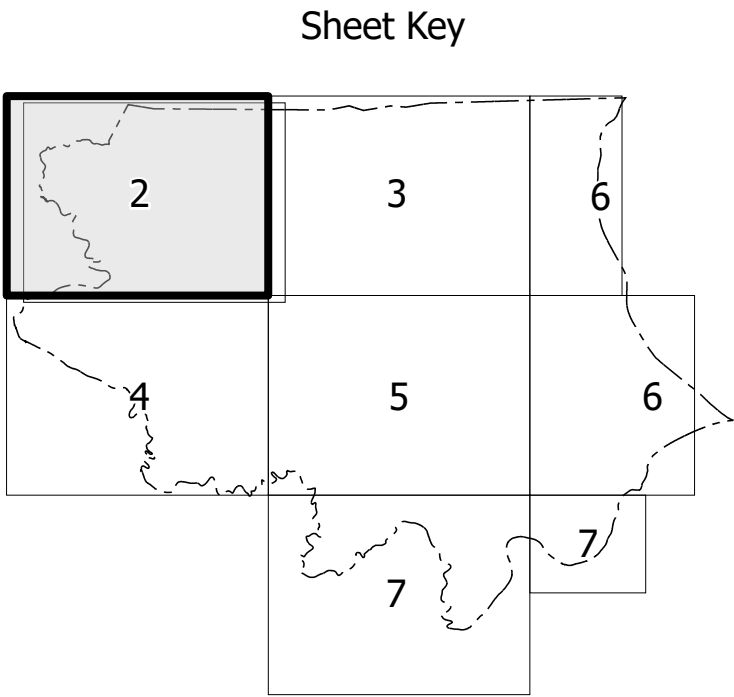
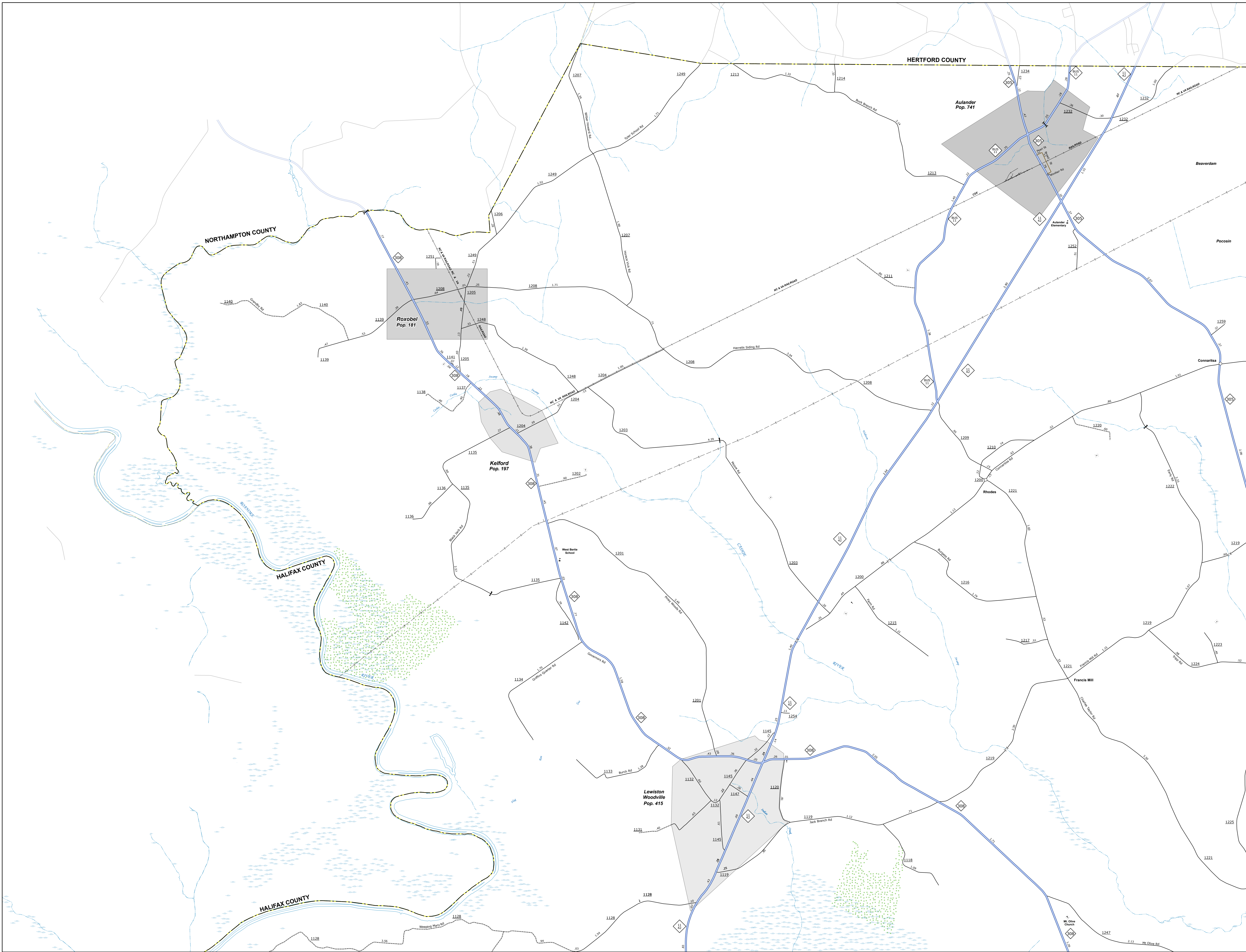
PREPARED BY THE
NORTH CAROLINA DEPARTMENT OF TRANSPORTATION
OPERATIONS PROGRAM MANAGEMENT UNIT - MAPPING SECTION
IN COOPERATION WITH THE
U.S. DEPARTMENT OF TRANSPORTATION
FEDERAL HIGHWAY ADMINISTRATION



TERMS OF USE: The Mapping Section's goal is to provide the most accurate and current information possible. Map data is compiled from numerous sources with varying dates of publication and map accuracy standards. As a result, the accuracy, currency, and completeness of the data provided will vary. The North Carolina Department of Transportation shall not be held liable for any errors in the map data. This map cannot be construed to be a legal document. The information shown on this map was last updated in February 2025.

TERMS OF USE: The Mapping Section's goal is to provide the most accurate and current information possible. Map data is compiled from numerous sources with varying dates of publication and map accuracy standards. As a result, the accuracy, currency and completeness of this map cannot be guaranteed to be a legal document. This information shown on the map was last updated in February 2025. For digital copies of this map in different map products, visit <https://www.ncdot.gov/transportation/transportation-planning-and-development/mapping-section/>

COPIES OF THIS MAP ARE AVAILABLE TO THE PUBLIC AT NO CHARGE. CONTACT US TO ORDER.
MAILING ADDRESS: 100 SOUTH MAIN STREET, SUITE 200, WASHINGTON, NC 27888
PHONE: 919.734.4400

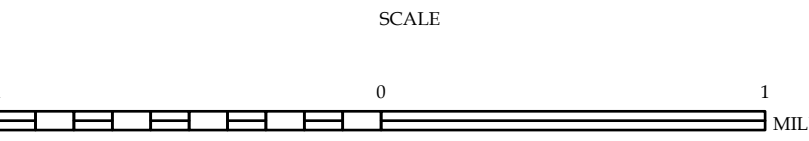


- LEGEND**
- INTERSTATE US NC Divided Hwy Undivided Hwy
 - BLUE RIDGE PARKWAY
 - UNPAVED SURFACED ROAD
 - HARD SURFACED ROAD
 - NON-SYSTEM ROAD
 - PROVISIONALLY DRAWN ROAD
 - PROTECTED LOCATION
 - INTERSECTION DISTANCE
 - INTERSTATE HIGHWAY
 - U.S. NUMBERED HIGHWAY
 - N.C. NUMBERED HIGHWAY
 - U.S. NUMBERED BICYCLE ROUTE
 - N.C. NUMBERED BICYCLE ROUTE
 - INTERSTATE INTERCHANGE NUMBER
 - SECONDARY ROAD NUMBER
 - UTILITY LINES
 - RAILROAD LINE
 - RAILROAD STATION
 - INSET AREA
 - COUNTY LINE
 - SMOOTHED URBAN BOUNDARIES
 - CITY LIMITS
 - TRUCK ROUTE AND RAMP
 - NARROW CREEK OR STREAM
 - WIDE RIVER OR CREEK
 - RESERVOIR, POND, OR LAKE W/ ISLAND
 - DAM OR DAM WITH LOCK
 - WATERFALL
 - SWAMP
 - COMMUNITY
 - COUNTY SEAT
 - SCHOOL
 - COLLEGE OR UNIVERSITY
 - HOSPITAL
 - COAST GUARD STATION
 - CHURCH
 - CHURCH WITH CEMETERY
 - CEMETERY
 - PATROL STATION
 - CORRECTION OR PENAL INSTITUTION
 - QUARRY
 - MINE OR PIT
 - HIGHWAY GARAGE OR MAINT. YARD
 - HIGHWAY DIV. OR REST OFFICE
 - MILITARY POST
 - MEET STATION
 - FAIRGROUNDS
 - HISTORICAL SITE
 - POINTS OF INTEREST
 - POST OFFICE
 - STATE FOREST
 - LIGHTHOUSE
 - MOUNTAIN SUMMIT
 - MOUNTAIN GAP
 - OVERLOOK
 - REST AREA
 - VISITOR CENTER AREA
 - WELCOME CENTER AREA
 - AIRPORT
 - MILITARY AIRPORT
 - NATIONAL / STATE FOREST BOUNDARY
 - WILDLIFE REFUGE
 - NATIONAL / STATE PARK BOUNDARY
 - GAME LANDS BOUNDARY
 - MILITARY RESERVATION BOUNDARY
 - INDIAN RESERVATION BOUNDARY



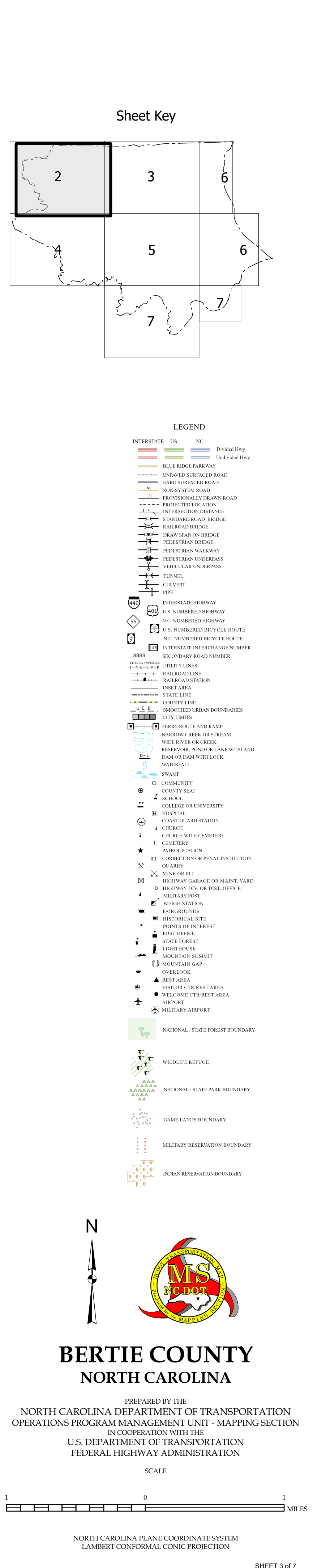
BERTIE COUNTY NORTH CAROLINA

PREPARED BY THE
NORTH CAROLINA DEPARTMENT OF TRANSPORTATION
OPERATIONS PROGRAM MANAGEMENT UNIT - MAPPING SECTION
IN COOPERATION WITH THE
U.S. DEPARTMENT OF TRANSPORTATION
FEDERAL HIGHWAY ADMINISTRATION

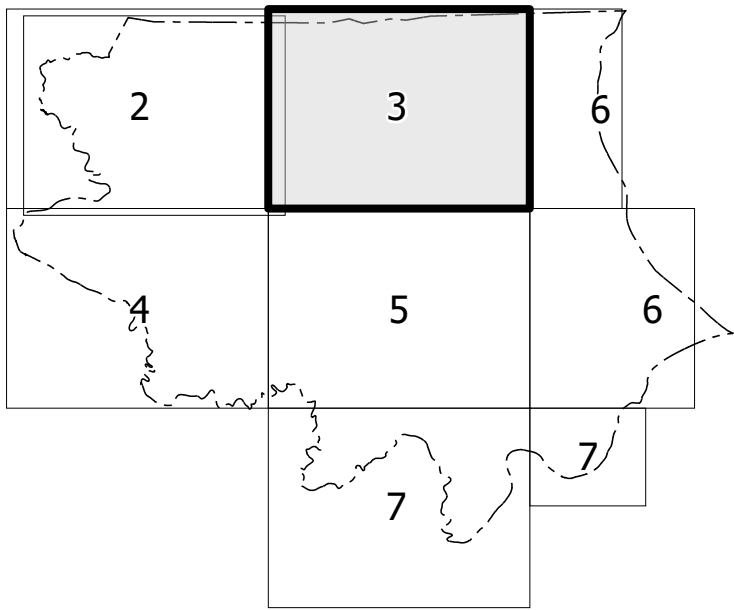


NORTH CAROLINA PLANE COORDINATE SYSTEM
LAMBERT CONFORMAL CONIC PROJECTION

COPIES OF THIS MAP ARE AVAILABLE TO THE
PUBLIC AT NOMINAL COST. CONTACT US TO ORDER:
mapping@usgs.gov
<https://connect.ncddot.gov/resources/State-Mapping/Pages/Ordering-Maps.aspx>
(919) 834-8480



COPIES OF THIS MAP ARE AVAILABLE TO THE PUBLIC AT NOMINAL COST. CONTACT US TO ORDER.

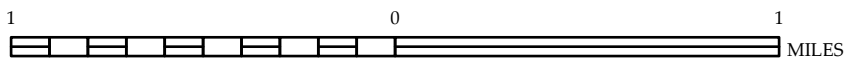


LEGEND

-

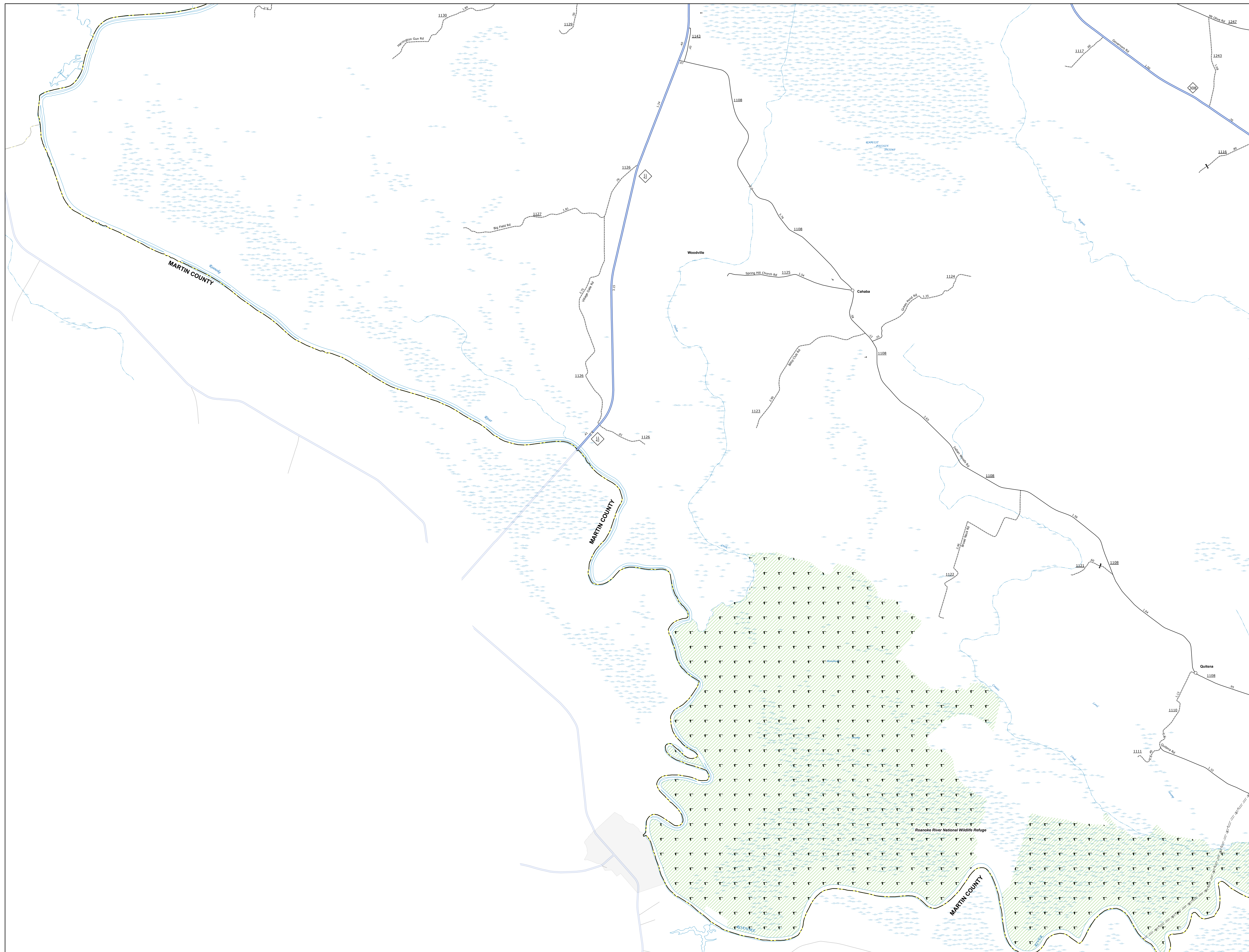
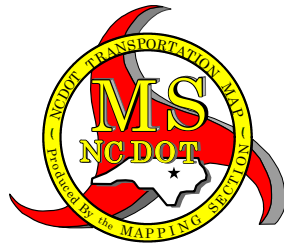
PREPARED BY THE
NORTH CAROLINA DEPARTMENT OF TRANSPORTATION
OPERATIONS PROGRAM MANAGEMENT UNIT - MAPPING SECTION
IN COOPERATION WITH THE
U.S. DEPARTMENT OF TRANSPORTATION
FEDERAL HIGHWAY ADMINISTRATION

SCALE



NORTH CAROLINA PLANE COORDINATE SYSTEM
LAMBERT CONFORMAL CONIC PROJECTION

COPIES OF THIS MAP ARE AVAILABLE TO THE PUBLIC AT NOMINAL COST. CONTACT US TO ORDER mapping@upporc.net
<https://connect.ncdot.gov/resources/State-Mapping-Pages>
(919) 834-8480

[illegible]

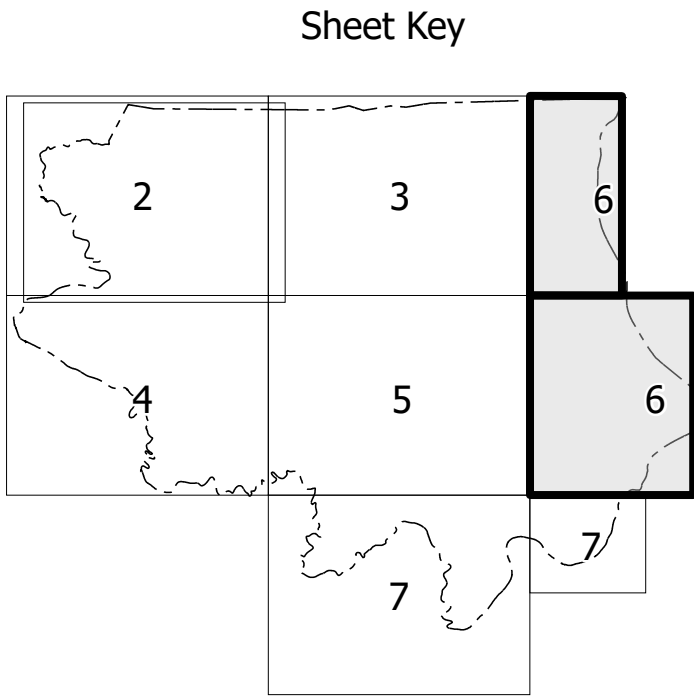
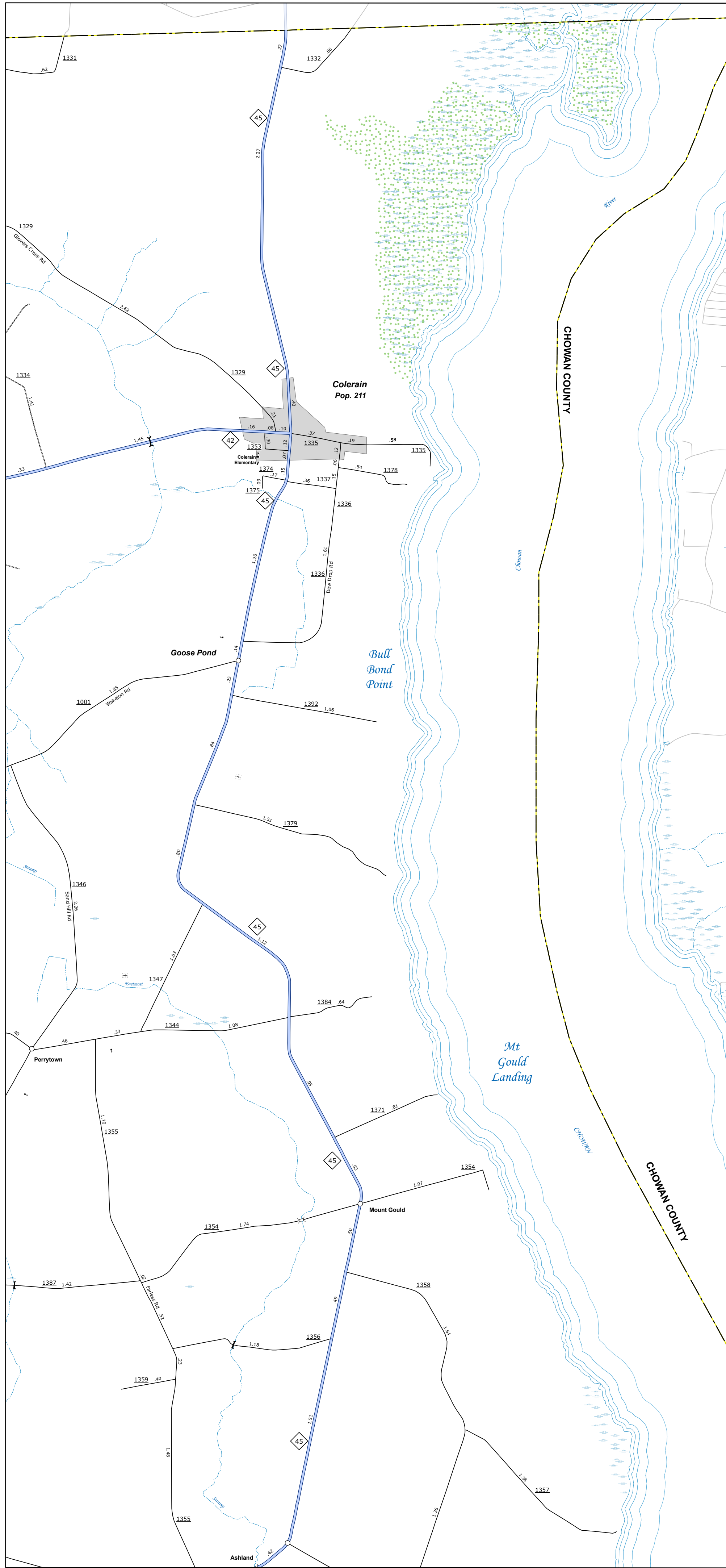
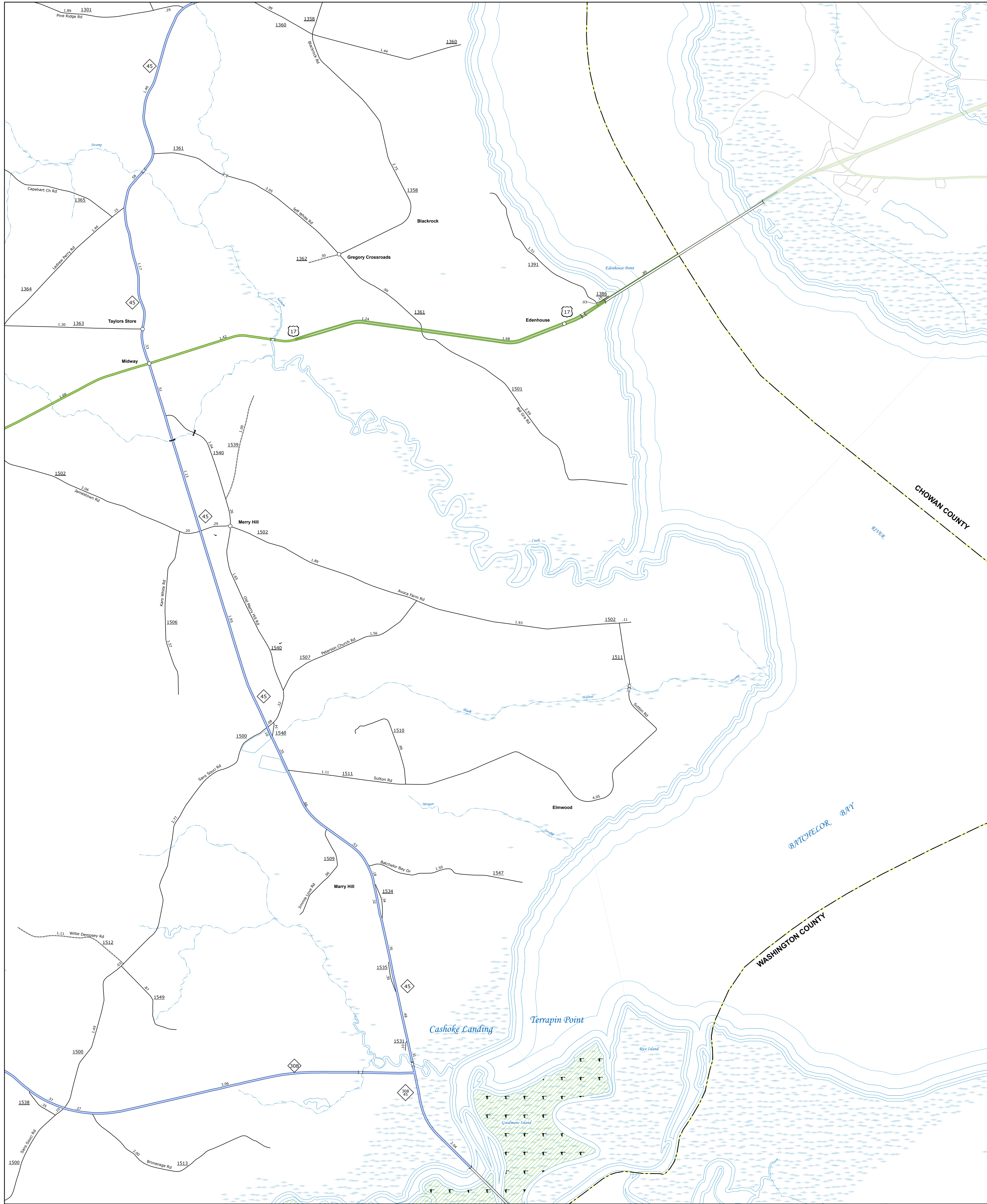
PREPARED BY THE
NORTH CAROLINA DEPARTMENT OF TRANSPORTATION
OPERATIONS PROGRAM MANAGEMENT UNIT - MAPPING SECTION
IN COOPERATION WITH THE
U.S. DEPARTMENT OF TRANSPORTATION
FEDERAL HIGHWAY ADMINISTRATION

A horizontal number line representing a distance of 1 mile. The line is divided into 8 equal segments by vertical tick marks. Above the line, the number '1' is placed above the first tick mark, '0' is placed above the eighth tick mark, and '1' is placed above the final tick mark. The word 'MILES' is written at the right end of the line.

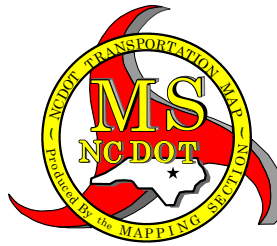
NORTH CAROLINA PLANE COORDINATE SYSTEM
LAMBERT CONFORMAL CONIC PROJECTION

TERMS OF USE: The Mapping Section's goal is to provide the most accurate and current information possible. Map data is compiled from numerous sources with varying dates of publication and map accuracy standards. As a result, the accuracy, currency and completeness of this map cannot be guaranteed to be a legal document. The information shown on this map was last updated in February 2025. For digital copies of this map in different map formats, visit <https://www.ncdot.gov/transportation/transportation-planning-and-design/mapping-section>

COPIES OF THIS MAP ARE AVAILABLE TO THE PUBLIC AT NO CHARGE. FOR MORE INFORMATION, VISIT <https://www.ncdot.gov/transportation/transportation-planning-and-design/mapping-section> OR CALL 1-800-368-3343

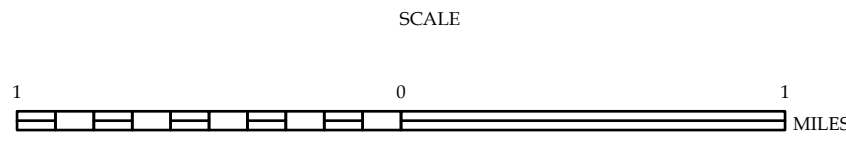


- LEGEND**
- INTERSTATE: US, NC, Divided Hwy, Undivided Hwy
 - BLUE RIDGE PARKWAY
 - UNPAVED SURFACED ROAD
 - HARD SURFACED ROAD
 - NON-SYSTEM ROAD
 - PROVISIONALLY DESIGN ROAD
 - PROJECTED LOCATION
 - INTERSECTION DISTANCE
 - INTERSTATE HIGHWAY
 - U.S. NUMBERED HIGHWAY
 - N.C. NUMBERED HIGHWAY
 - U.S. NUMBERED BICYCLE ROUTE
 - N.C. NUMBERED BICYCLE ROUTE
 - INTERSTATE INTERCHANGE NUMBER
 - SECONDARY ROAD NUMBER
 - UTILITY LINES
 - RAILROAD LINE
 - RAILROAD STATION
 - INSET AREA
 - STATE LINE
 - COUNTY LINE
 - SMOOTHED URBAN BOUNDARIES
 - CITY LIMITS
 - FERRY ROUTE AND RAMP
 - NARROW CREEK OR STREAM
 - WIDE RIVER OR CREEK
 - RESERVOIR, POND OR LAKE W/ ISLAND
 - DAM OR DAM WITH LOCK
 - WATERFALL
 - SWAMP
 - COMMUNITY
 - COUNTY SEAT
 - SCHOOL
 - COLLEGE OR UNIVERSITY
 - HOSPITAL
 - COAST GUARD STATION
 - CHURCH
 - CHURCH WITH CEMETERY
 - CEMETERY
 - PATROL STATION
 - CORRECTION OR PENAL INSTITUTION
 - QUARRY
 - MINE OR PIT
 - HIGHWAY GARAGE OR MAIN YARD
 - HIGHWAY DIV. OR REST OFFICE
 - MILITARY POST
 - RAILROAD STATION
 - FAIRGROUNDS
 - HISTORICAL SITE
 - POINTS OF INTEREST
 - POST OFFICE
 - STATE FOREST
 - LIGHTHOUSE
 - MOUNTAIN SUMMIT
 - MOUNTAIN GAP
 - OVERLOOK
 - REST AREA
 - VISITOR CENTER REST AREA
 - WELCOME CENTER REST AREA
 - AIRPORT
 - MILITARY AIRPORT
 - NATIONAL / STATE FOREST BOUNDARY
 - WILDLIFE REFUGE
 - NATIONAL / STATE PARK BOUNDARY
 - GAME LANDS BOUNDARY
 - MILITARY RESERVATION BOUNDARY
 - INDIAN RESERVATION BOUNDARY



BERTIE COUNTY NORTH CAROLINA

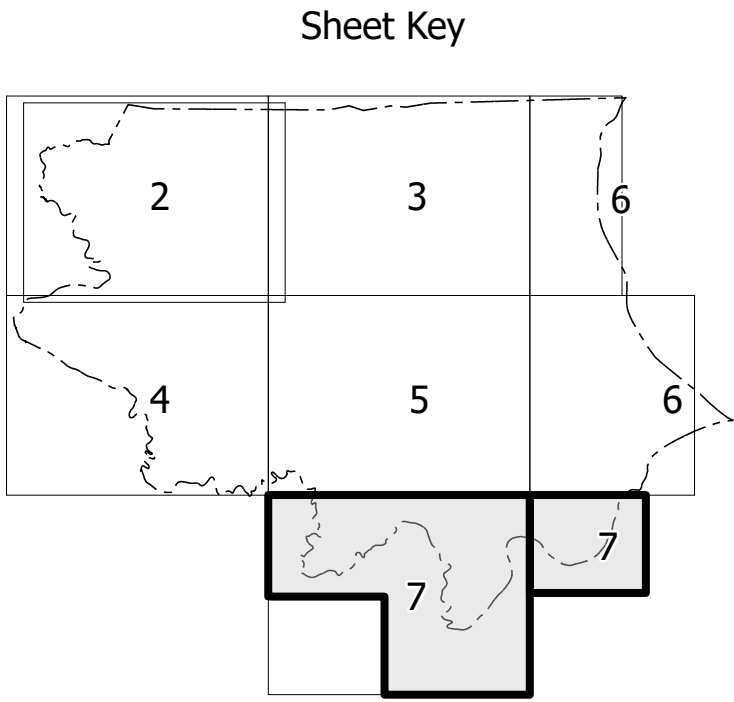
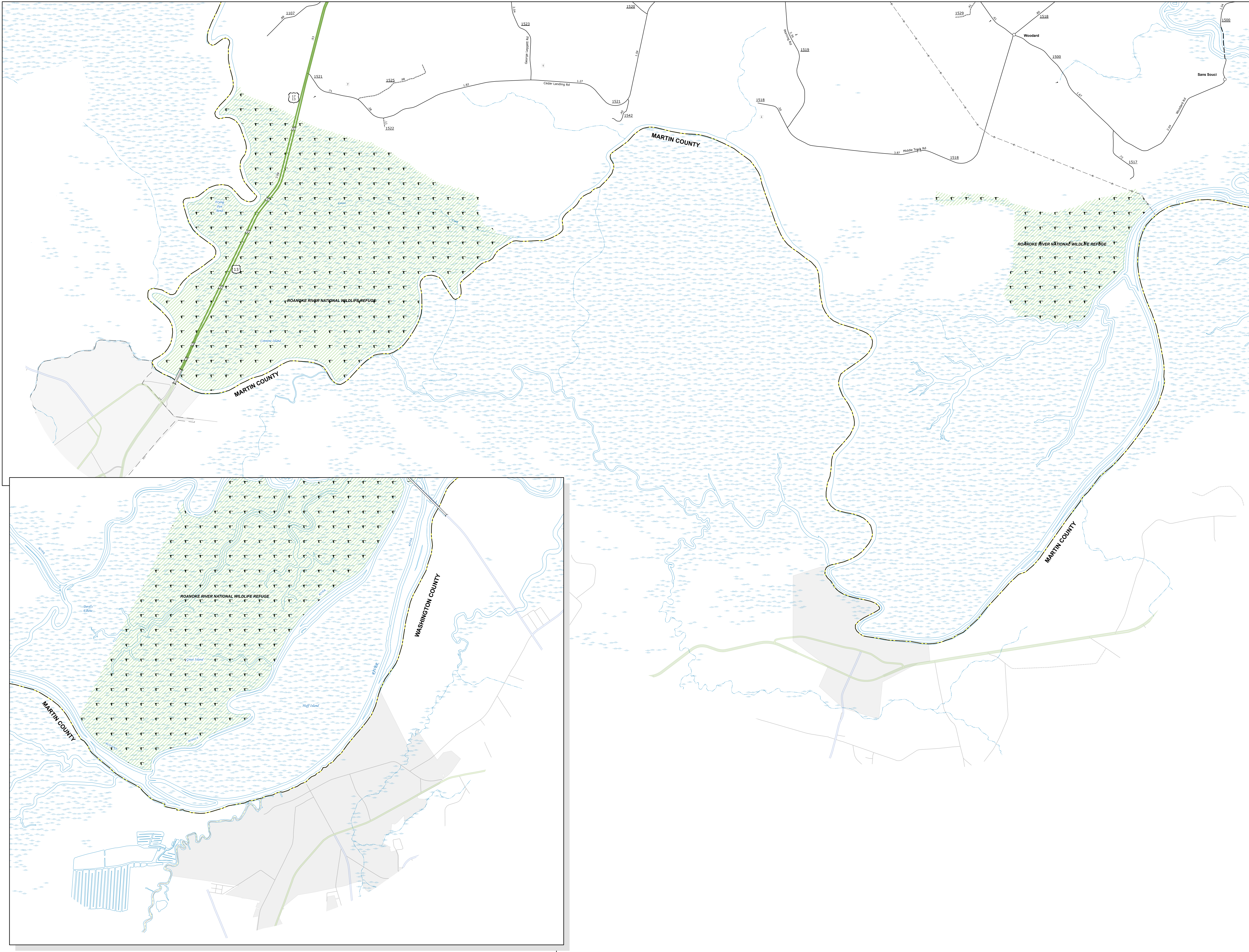
PREPARED BY THE
NORTH CAROLINA DEPARTMENT OF TRANSPORTATION
OPERATIONS PROGRAM MANAGEMENT UNIT - MAPPING SECTION
IN COOPERATION WITH THE
U.S. DEPARTMENT OF TRANSPORTATION
FEDERAL HIGHWAY ADMINISTRATION



NORTH CAROLINA PLANE COORDINATE SYSTEM
LAMBERT CONFORMAL CONIC PROJECTION

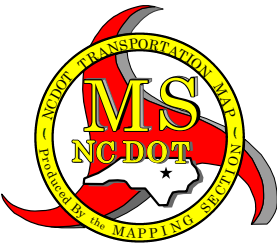
TERMS OF USE: The Mapping Section's goal is to provide the most accurate and current information possible. Map data is compiled from numerous sources with varying dates of publication and map accuracy standards. Also noted, the accuracy, currency and completeness of data cannot be guaranteed for a legal document. This information shown on the map was last updated in February 2025.
For digital copies of this map or additional map products, visit <https://www.ncdot.gov/transportation/transportation-planning-and-design/mapping/Products/Products.aspx>

COPIES OF THIS MAP ARE AVAILABLE TO THE PUBLIC AT NO CHARGE TO THE PUBLIC.
FOR INFORMATION, CONTACT THE MAPS SECTION AT (919) 874-4400.



LEGEND

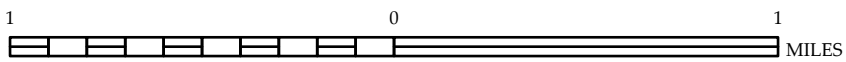
- | | | | |
|------------|----|----|-----------------------------------|
| INTERSTATE | US | NC | Divided Hwy |
| | | | Undivided Hwy |
| | | | Blue Ridge Parkway |
| | | | Unpaved Surface Road |
| | | | Hard Surface Road |
| | | | Non-System Road |
| | | | Provisionally Drawn Road |
| | | | Projected Location |
| | | | Intersection Distance |
| | | | Interstate Highway |
| | | | U.S. Numbered Highway |
| | | | N.C. Numbered Highway |
| | | | U.S. Numbered Bicycle Route |
| | | | N.C. Numbered Bicycle Route |
| | | | Interstate Interchange Number |
| | | | Secondary Road Number |
| | | | Utility Lines |
| | | | Railroad Line |
| | | | Railroad Station |
| | | | Inset Area |
| | | | County Line |
| | | | Smoothed Urban Boundaries |
| | | | City Limits |
| | | | Ferry Route and Ramp |
| | | | Narrow Creek or Stream |
| | | | Wide River or Creek |
| | | | Reservoir, Pond or Lake w/ Island |
| | | | Dam or Dam with Lock |
| | | | Waterfall |
| | | | Swamp |
| | | | Community |
| | | | County Seat |
| | | | School |
| | | | College or University |
| | | | Hospital |
| | | | Coast Guard Station |
| | | | Church |
| | | | Church with Cemetery |
| | | | Cemetery |
| | | | Patrol Station |
| | | | Correction or Penal Institution |
| | | | Quarry |
| | | | Mine or Pit |
| | | | Highway Garage or Main Yard |
| | | | Highway Div. or Rest Office |
| | | | Military Post |
| | | | Marsh Station |
| | | | Fairgrounds |
| | | | Historical Site |
| | | | Points of Interest |
| | | | Post Office |
| | | | State Forest |
| | | | Lighthouse |
| | | | Mountain Summit |
| | | | Mountain Gap |
| | | | Overlook |
| | | | Rest Area |
| | | | Visitor Ctr/Rest Area |
| | | | Welcome Ctr/Rest Area |
| | | | Airport |
| | | | Military Airport |
| | | | National / State Forest Boundary |
| | | | Wildlife Refuge |
| | | | National / State Park Boundary |
| | | | Game Lands Boundary |
| | | | Military Reservation Boundary |
| | | | Indian Reservation Boundary |



BERTIE COUNTY
NORTH CAROLINA

PREPARED BY THE
NORTH CAROLINA DEPARTMENT OF TRANSPORTATION
OPERATIONS PROGRAM MANAGEMENT UNIT - MAPPING SECTION
IN COOPERATION WITH THE
U.S. DEPARTMENT OF TRANSPORTATION
FEDERAL HIGHWAY ADMINISTRATION

SCALE



NORTH CAROLINA PLANE COORDINATE SYSTEM
LAMBERT CONFORMAL CONIC PROJECTION