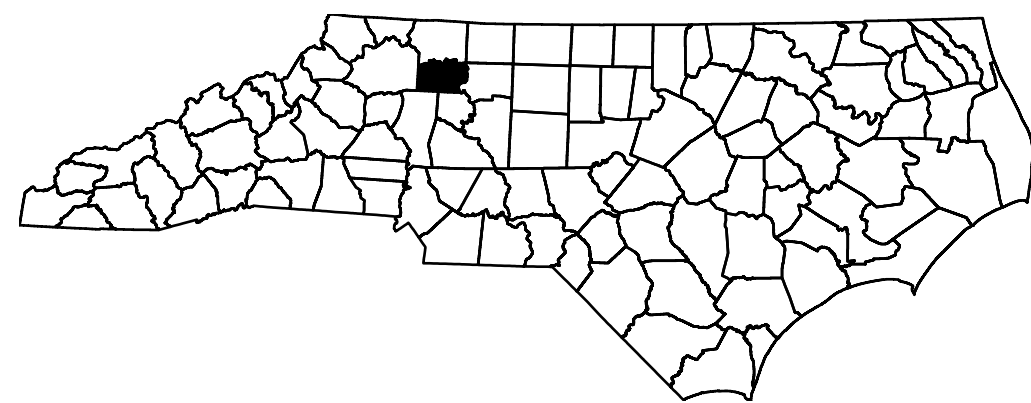
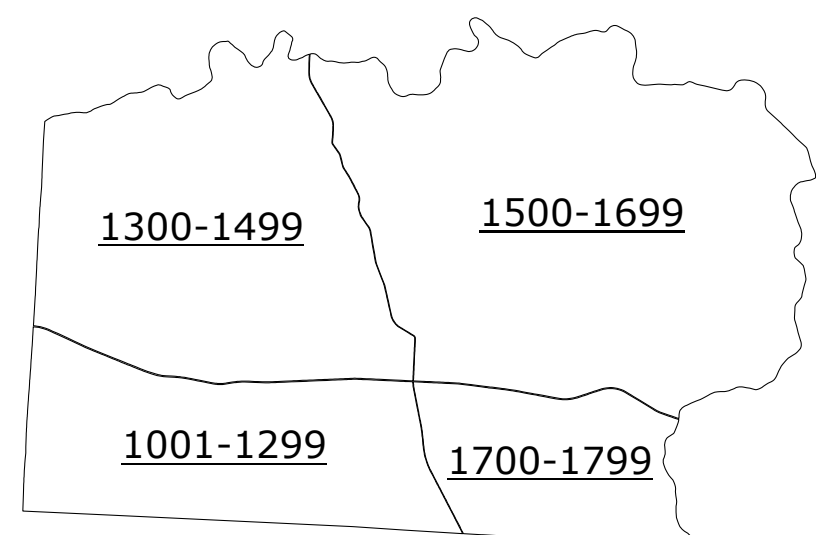
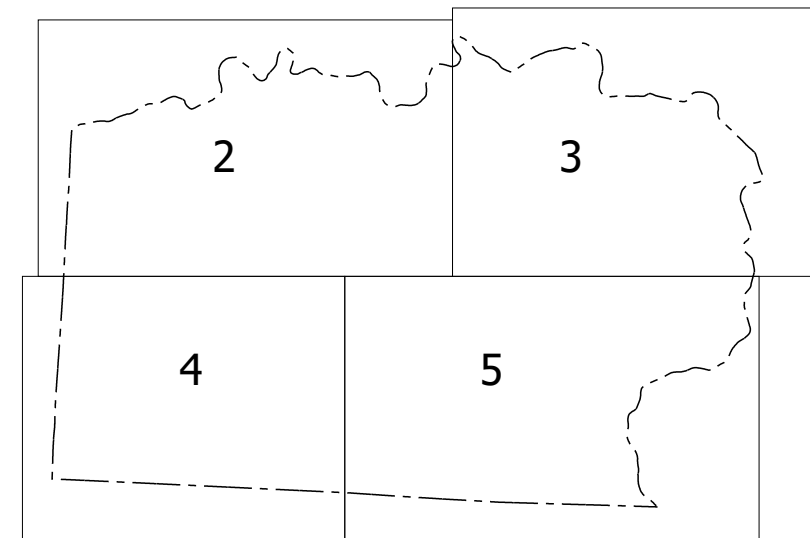


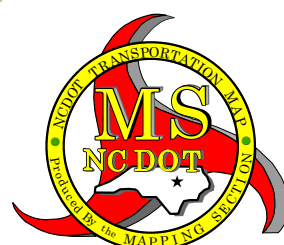
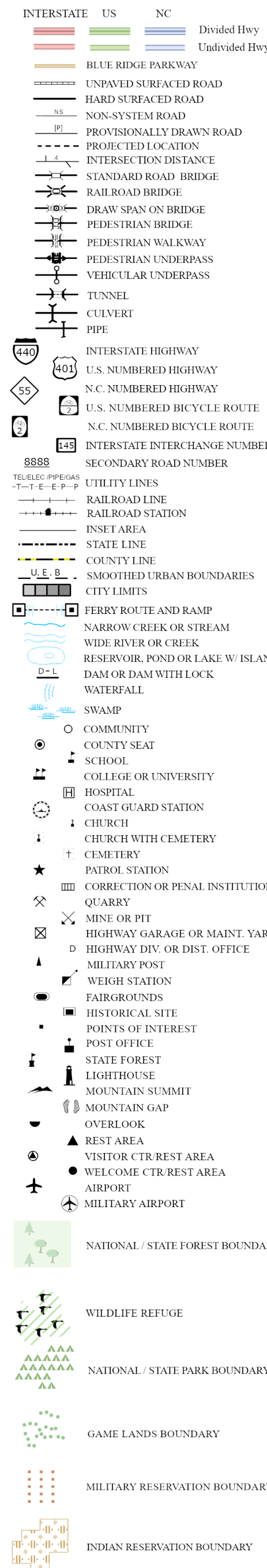
COPIES OF THIS MAP ARE AVAILABLE TO THE
PUBLIC AT NOMINAL COST. CONTACT US TO ORDER:
mapping@portlandmcdot.gov
<https://connect.mcdot.gov/resources/State-Mapping-Page>
(919) 834-8480



Sheet Key



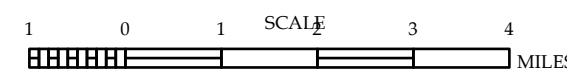
LEGEND



YADKIN COUNTY

NORTH CAROLINA

PREPARED BY THE
NORTH CAROLINA DEPARTMENT OF TRANSPORTATION
OPERATIONS PROGRAM MANAGEMENT UNIT - MAPPING SECTION
IN COOPERATION WITH THE
U.S. DEPARTMENT OF TRANSPORTATION
FEDERAL HIGHWAY ADMINISTRATION

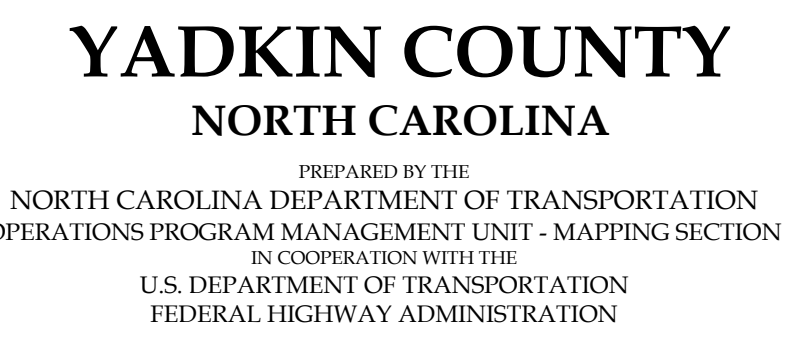
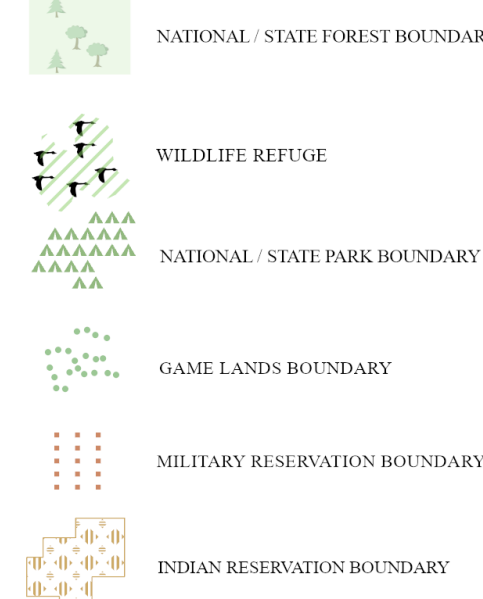


NORTH CAROLINA PLANE COORDINATE SYSTEM
LAMBERT CONFORMAL CONIC PROJECTION

COPIES OF THIS MAP ARE AVAILABLE TO THE
PUBLIC CONTACT: US TO CANADA
PACIFIC COASTAL CORRIDOR 2022
MAPS/COPIES/US-TO-CANADA
BY 01/31/23 4:45:03

TERMS OF USE: The Mapping Society's goal is to provide the most accurate and current information possible. Map data is compiled from a variety of sources, including government agencies, commercial mapping companies, and user-submitted data. While we strive for accuracy, we do not warrant the accuracy or completeness of the data provided here. The North Carolina Department of Transportation and the U.S. Department of Transportation are the primary sources of the data used in this map. The data is provided for informational purposes only and should not be used for navigation or other critical decisions. For digital copies of the map or additional map products, visit <https://www.mapping-society.com/products>.

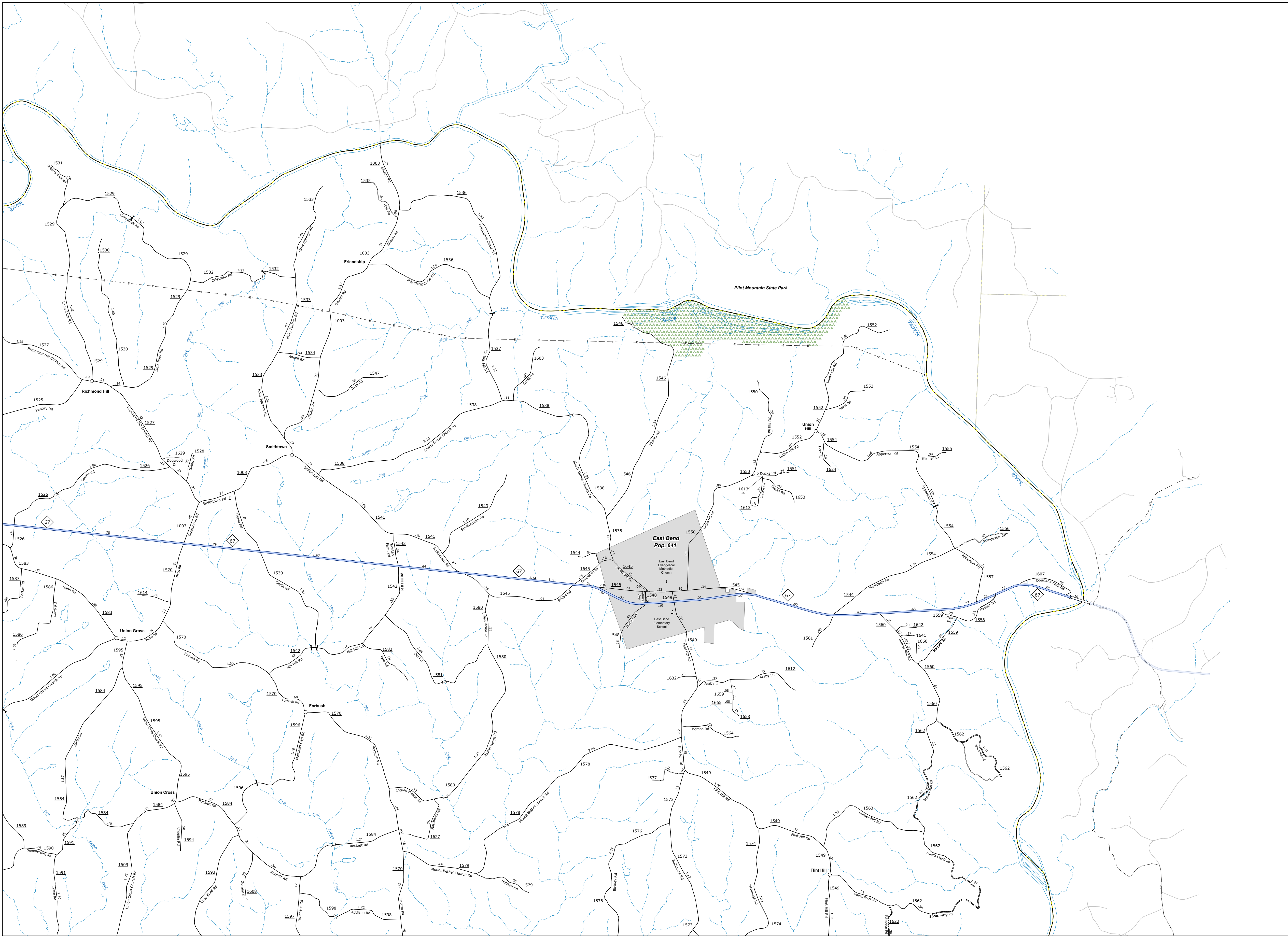
	INTERSTATE		US		NC		Divided Hwy
							Undivided Hwy
							BLUE RIDGE PARKWAY
							UNPAVED SURFACED ROAD
							URBAN SUBURBED ROAD
							NON-SYSTEM ROAD
							PROVISIONALLY DRAWN ROAD
							PROJECTED LOCATION
							INSTRUCTION DISTANCE
							STANDARD ROAD BRIDGE
							RAILROAD BRIDGE
							DRAW SPAN ON BRIDGE
							PEDESTRIAN BRIDGE
							PEDESTRIAN WALKWAY
							PEDESTRIAN CROSSPASS
							VEHICULAR UNDERPASS
							TUNNEL
							CULVERT
							PIPE
							INTERSTATE HIGHWAY
							U.S. NUMBERED HIGHWAY
							N.C. NUMBERED HIGHWAY
							U.S. NUMBERED BIICYCLE ROUTE
							N.C. NUMBERED BIICYCLE ROUTE
							INTERSTATE INTERCHANGE NUMBER
							U.S. NUMBERED ROAD NUMBER
							UTILITY LINES
							RAILROAD LINE
							RAILROAD STATION
							INSET AREA
							TRAIL LINE
							COUNTY LINE
							SMOOTHED URBAN BOUNDARIES
							CITY LIMITS
							FERRY ROUTE AND RAMP
							NARROW CREEK OR STREAM
							WIDE RIVER OR CREEK
							RESERVOIR, POND OR LAKE W/ ISLAND
							DAM OR DAM WITH LOCK
							WATERFALL
							SWAMP
							COMBATRY
							COUNTY SEAT



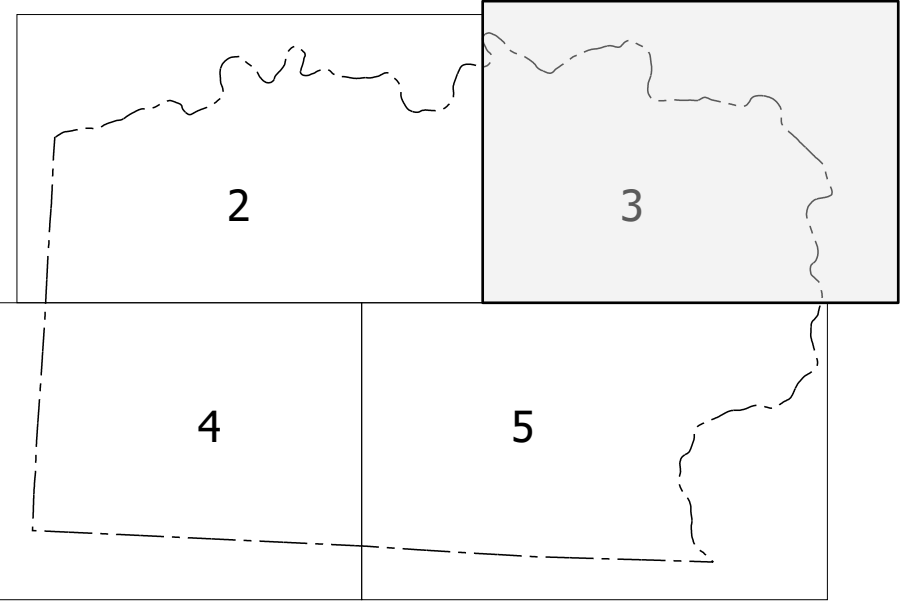
1 0 1
MILE
NORTH CAROLINA PLANE COORDINATE SYSTEM
LAMBERT CONFORMAL CONIC PROJECTION
SHEET 2 OF 5

TERMS OF USE: The Mapping Services Unit is to provide the most accurate and current information possible. Map data is compiled from various sources with varying degrees of accuracy. As a result, the accuracy, currency and completeness of the information is not guaranteed. The information shown on this map was last updated in October 2024. For a full copy of this map or additional map products, visit <https://www.ncdot.gov/transportation/mapping-services>.

COPIES OF THIS MAP ARE AVAILABLE TO THE PUBLIC AT NO CHARGE. CONTACT US TO ORDER: MappingServices@ncdot.gov or 1-800-368-3346.

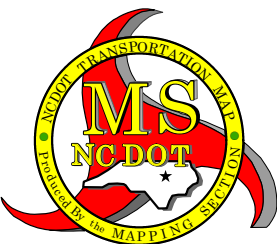


Sheet Key



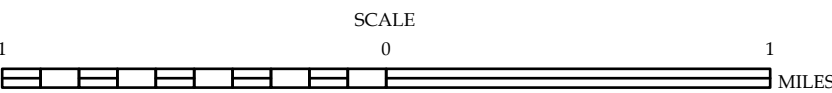
LEGEND

- INTERSTATE US NC Divided Hwy Undivided Hwy
- BLUE RIDGE PARKWAY
- UNPAVED SURFACED ROAD
- HARD SURFACED ROAD
- NON-SYSTEM ROAD
- PROVISIONALLY DRAWN ROAD
- PROJECTED LOCATION
- INTERSECTION DISTANCE
- STANDARD ROAD BRIDGE
- RAILROAD BRIDGE
- DRAW SPAN ON BRIDGE
- PEDESTRIAN BRIDGE
- PEDESTRIAN WALKWAY
- PEDESTRIAN UNDERPASS
- VEHICULAR UNDERPASS
- TUNNEL
- CULVERT
- PIPE
- INTERSTATE HIGHWAY
- U.S. NUMBERED HIGHWAY
- N.C. NUMBERED HIGHWAY
- U.S. NUMBERED BICYCLE ROUTE
- N.C. NUMBERED BICYCLE ROUTE
- INTERSTATE INTERCHANGE NUMBER
- SECONDARY INTERCHANGE NUMBER
- UTILITY LINES
- RAILROAD LINE
- RAILROAD STATION
- INSET AREA
- STATE LINE
- COUNTY LINE
- SMOOTHED URBAN BOUNDARIES
- CITY LIMITS
- FERRY ROUTE AND RAMP
- NARROW CREEK OR STREAM
- WIDE RIVER OR CREEK
- RESERVOIR, POND OR LAKE W/ ISLAND
- DAM OR DAM WITH LOCK
- WATERFALL
- SWAMP
- COMMUNITY
- COUNTY SEAT
- SCHOOL
- COLLEGE OR UNIVERSITY
- HOSPITAL
- COAST GUARD STATION
- CHURCH
- CHURCH WITH CEMETERY
- CEMETERY
- PATROL STATION
- CORRECTION OR PENAL INSTITUTION
- QUARRY
- MINE OR PIT
- HIGHWAY GARAGE OR MAINT. YARD
- HIGHWAY DIV. OR DIST. OFFICE
- MILITARY POST
- WEIGH STATION
- FAIRGROUNDS
- HISTORICAL SITE
- POINTS OF INTEREST
- POST OFFICE
- STATE FOREST
- LIGHTHOUSE
- MOUNTAIN SUMMIT
- MOUNTAIN GAP
- OVERLOOK
- REST AREA
- VISITOR CTR/REST AREA
- WELCOME CTR/REST AREA
- AIRPORT
- MILITARY AIRPORT
- NATIONAL / STATE FOREST BOUNDARY
- WILDLIFE REFUGE
- NATIONAL / STATE PARK BOUNDARY
- GAME LANDS BOUNDARY
- MILITARY RESERVATION BOUNDARY
- INDIAN RESERVATION BOUNDARY



YADKIN COUNTY
NORTH CAROLINA

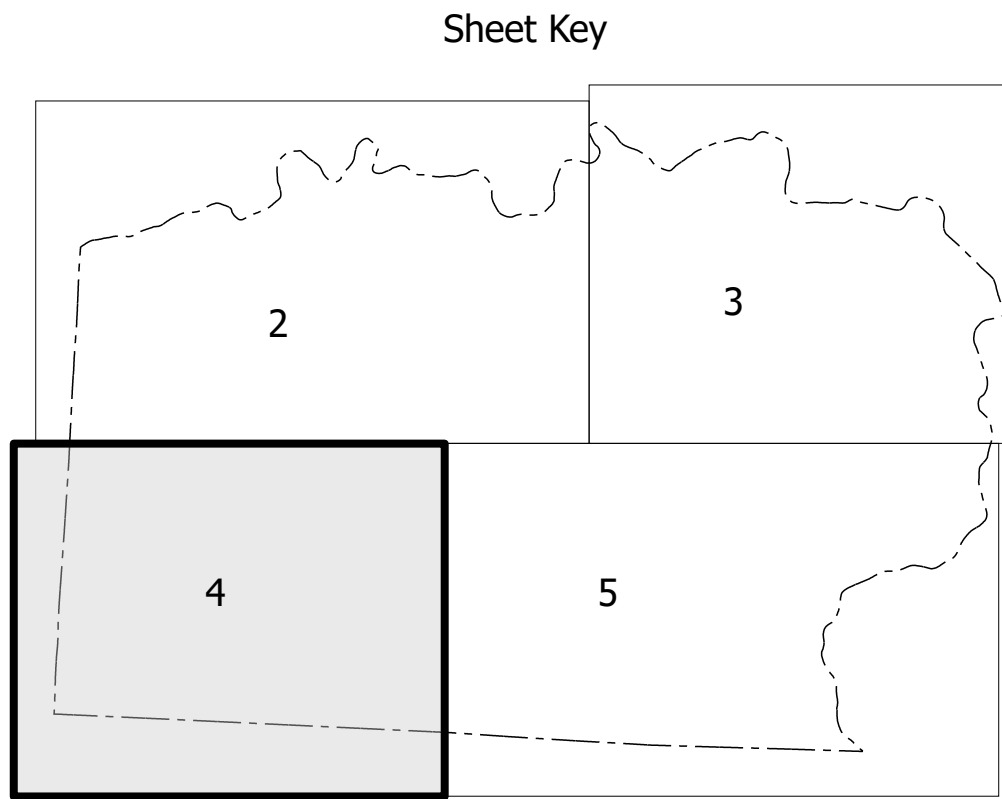
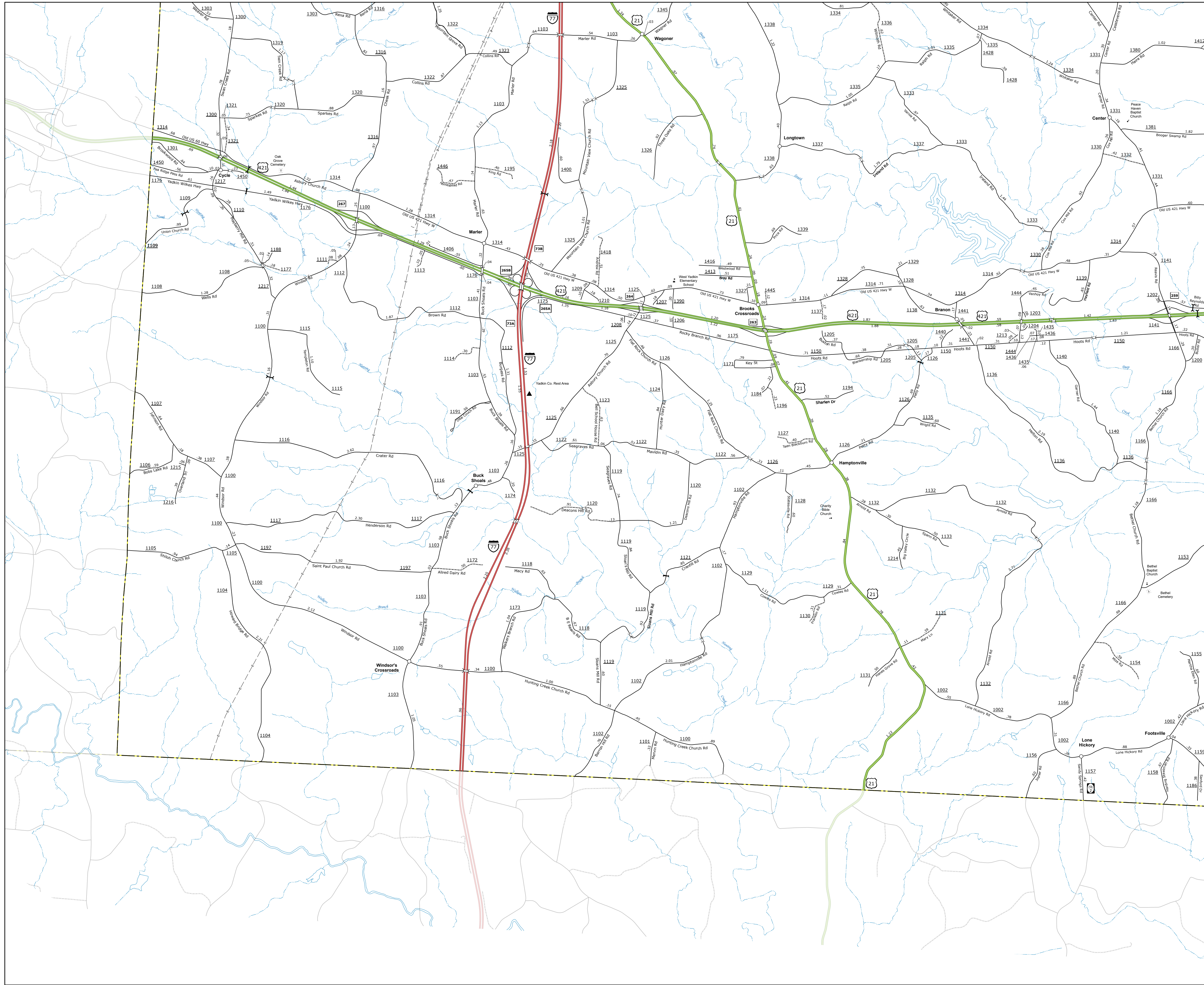
PREPARED BY THE
NORTH CAROLINA DEPARTMENT OF TRANSPORTATION
OPERATIONS PROGRAM MANAGEMENT UNIT - MAPPING SECTION
IN COOPERATION WITH THE
U.S. DEPARTMENT OF TRANSPORTATION
FEDERAL HIGHWAY ADMINISTRATION



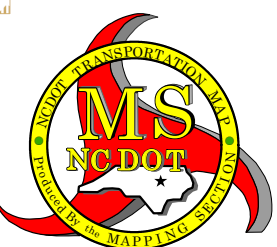
NORTH CAROLINA PLANE COORDINATE SYSTEM
LAMBERT CONFORMAL CONIC PROJECTION

TERMS OF USE: The Mapping Section's goal is to provide the most accurate and current information possible. Map data is compiled from the data provided by users. The North Carolina Department of Transportation does not bear liability for any errors in the map data. This map is for informational purposes only. For digital copies of this map or additional map products, visit <https://www.ncdot.gov/transportation/Mapping/Products>.

COPIES OF THIS MAP ARE AVAILABLE TO THE PUBLIC AT THE NORTH CAROLINA DEPARTMENT OF TRANSPORTATION, 1000 EAST 7TH STREET, RALEIGH, NC 27601. (919) 882-4400

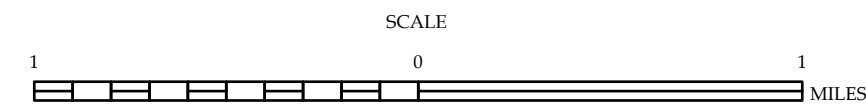


- LEGEND
- INTERSTATE US NC
 - BLVD BRIDGE PARKWAY
 - UNPAVED SURFACED ROAD
 - HARD SURFACED ROAD
 - NON-SYSTEM ROAD
 - PROFESSIONALLY DRAWN ROAD
 - PROJECTED LOCATION
 - INTERSECTION DISTANCE
 - STANDARD ROAD BRIDGE
 - RAILROAD BRIDGE
 - DRAW SPAN ON BRIDGE
 - PEDESTRIAN BRIDGE
 - PEDESTRIAN WALKWAY
 - VEHICULAR UNDERPASS
 - TUNNEL
 - CULVERT
 - PIPE
 - INTERSTATE HIGHWAY
 - U.S. NUMBERED HIGHWAY
 - N.C. NUMBERED HIGHWAY
 - U.S. NUMBERED BICYCLE ROUTE
 - N.C. NUMBERED BICYCLE ROUTE
 - INTERSTATE INTERCHANGE NUMBER
 - SECONDARY ROAD NUMBER
 - 8888
 - TRAILHEAD
 - UTILITY LINES
 - RAILROAD LINE
 - RAILROAD STATION
 - INSURANCE
 - STATE LINE
 - COUNTY LINE
 - SMOOTHED URBAN BOUNDARIES
 - CITY LIMITS
 - FERRY ROUTE AND RAMP
 - NARROW CREEK OR STREAM
 - WIDE RIVER OR CREEK
 - RESERVOIR, POND OR LAKE W/ ISLAND
 - DAM OR DAM WITH LOCK
 - WATERFALL
 - SWAMP
 - COMMUNITY
 - COUNTY SEAT
 - SCHOOL
 - COLLEGE OR UNIVERSITY
 - HOSPITAL
 - COAST GUARD STATION
 - CHURCH
 - CHURCH WITH CEMETERY
 - CEMETERY
 - PATRICK STATION
 - CORRECTION OR PENAL INSTITUTION
 - QUARRY
 - MINE OR PIT
 - HIGHWAY GARAGE OR MAINT. YARD
 - HIGHWAY DIV. OR DIST. OFFICE
 - MILITARY POST
 - WEIGH STATION
 - FAIRGROUNDS
 - HISTORICAL SITE
 - POINTS OF INTEREST
 - POST OFFICE
 - STATE FOREST
 - LIGHTHOUSE
 - MOUNTAIN SUMMIT
 - MOUNTAIN GAP
 - OVERLOOK
 - REST AREA
 - VISITOR CTR/REST AREA
 - WELCOME CTR/REST AREA
 - AIRPORT
 - MILITARY AIRPORT
 - NATIONAL / STATE FOREST BOUNDARY
 - WILDLIFE REFUGE
 - NATIONAL / STATE PARK BOUNDARY
 - GAME LANDS BOUNDARY
 - MILITARY RESERVATION BOUNDARY
 - INDIAN RESERVATION BOUNDARY



YADKIN COUNTY NORTH CAROLINA

PREPARED BY THE
NORTH CAROLINA DEPARTMENT OF TRANSPORTATION
OPERATIONS PROGRAM MANAGEMENT UNIT - MAPPING SECTION
IN COOPERATION WITH THE
U.S. DEPARTMENT OF TRANSPORTATION
FEDERAL HIGHWAY ADMINISTRATION

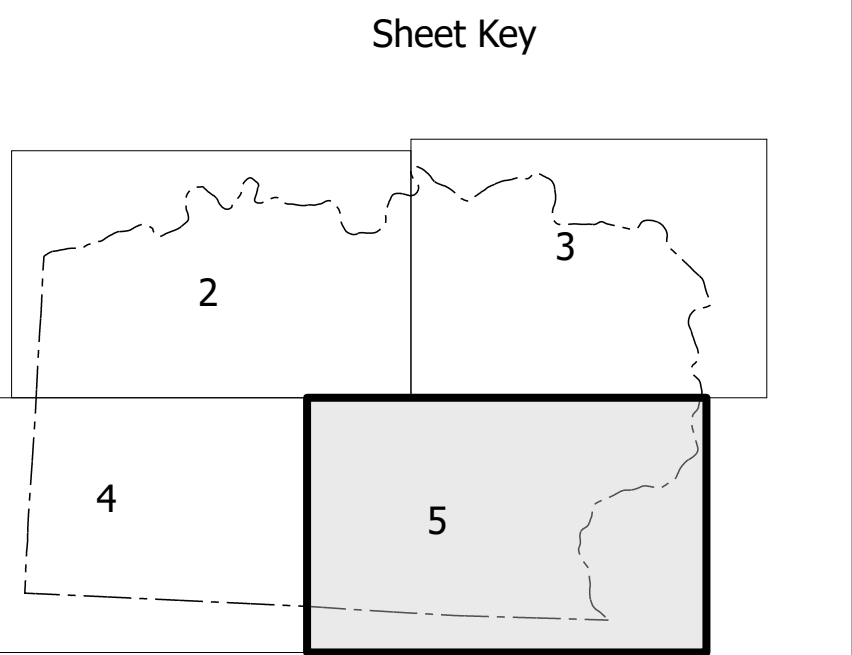
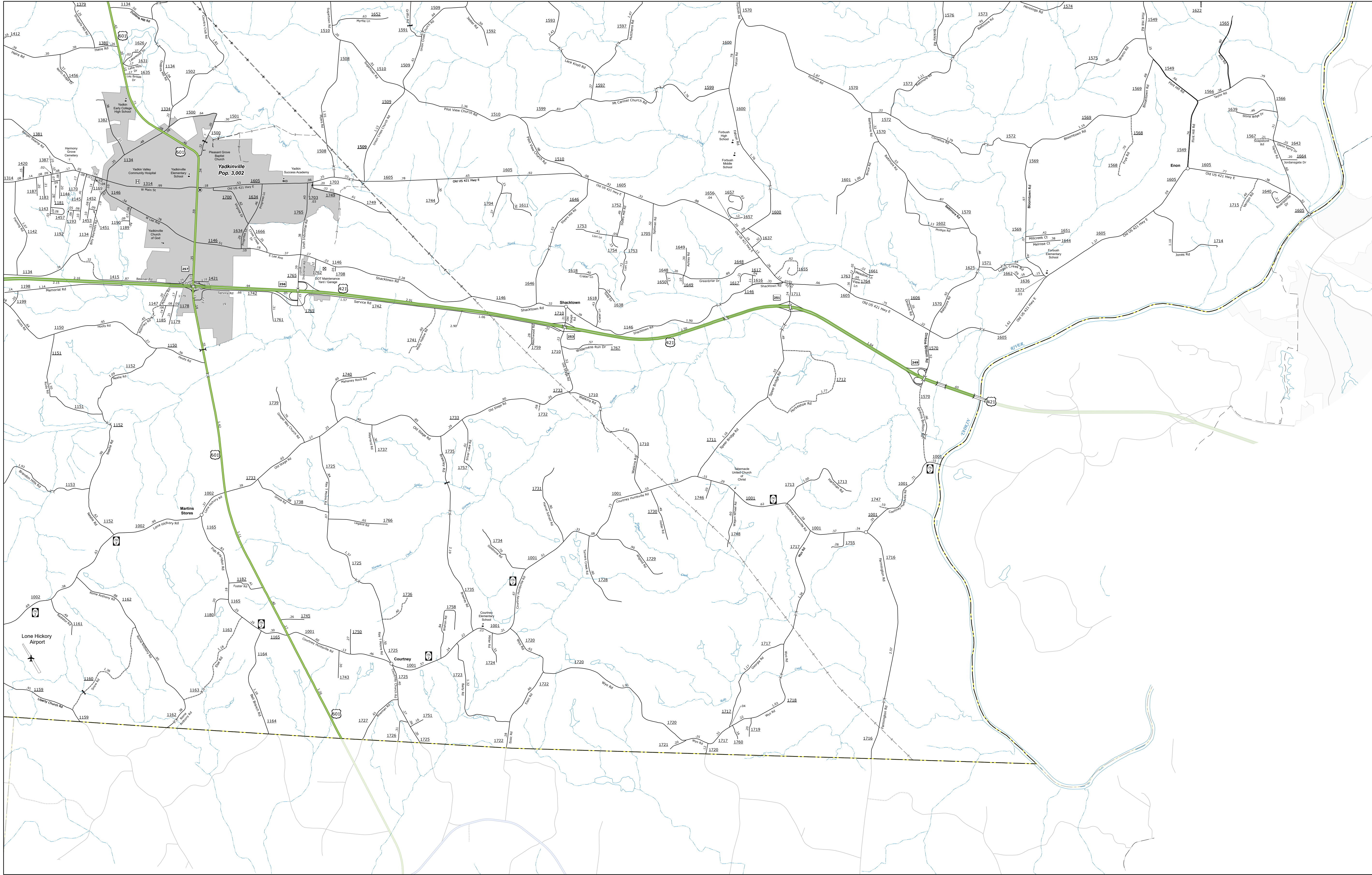


NORTH CAROLINA PLANE COORDINATE SYSTEM
LAMBERT CONFORMAL CONIC PROJECTION

SHEET 4 of 5

TERMS OF USE: The Mapping Services portal provides the most accurate and current information possible. Map data is compiled from numerous sources with varying dates of publication and map accuracy standards. As a result, the accuracy, currency, and completeness of information cannot be guaranteed. The information shown on this map was last updated in October 2024.

COPIES OF THIS MAP ARE AVAILABLE TO THE PUBLIC AT NO CHARGE. CONTACT US TO ORDER: 1-800-447-4466 OR VISIT: <https://www.ncdot.gov/transportation/Mapping/Products/Maps.aspx>



LEGEND

INTERSTATE	US	NC	Divided Hwy
Blue Ridge Parkway	Blue Ridge Parkway	Blue Ridge Parkway	Undivided Hwy
Unpaved Surface Road	Unpaved Surface Road	Unpaved Surface Road	Unpaved Surface Road
Hard Surface Road	Hard Surface Road	Hard Surface Road	Hard Surface Road
Non-System Road	Non-System Road	Non-System Road	Non-System Road
Provisionally Drawn Road	Provisionally Drawn Road	Provisionally Drawn Road	Provisionally Drawn Road
Projected Location	Projected Location	Projected Location	Projected Location
Intersection Distance	Intersection Distance	Intersection Distance	Intersection Distance
Standard Road Bridge	Standard Road Bridge	Standard Road Bridge	Standard Road Bridge
Railroad Bridge	Railroad Bridge	Railroad Bridge	Railroad Bridge
Draw Span on Bridge	Draw Span on Bridge	Draw Span on Bridge	Draw Span on Bridge
Pedestrian Walkway	Pedestrian Walkway	Pedestrian Walkway	Pedestrian Walkway
Pedestrian Underpass	Pedestrian Underpass	Pedestrian Underpass	Pedestrian Underpass
Vehicle Underpass	Vehicle Underpass	Vehicle Underpass	Vehicle Underpass
Tunnel	Tunnel	Tunnel	Tunnel
Culvert	Culvert	Culvert	Culvert
Pipe	Pipe	Pipe	Pipe
Interstate Highway	Interstate Highway	Interstate Highway	Interstate Highway
U.S. Numbered Highway	U.S. Numbered Highway	U.S. Numbered Highway	U.S. Numbered Highway
N.C. Numbered Highway	N.C. Numbered Highway	N.C. Numbered Highway	N.C. Numbered Highway
U.S. Numbered Bicycle Route	U.S. Numbered Bicycle Route	U.S. Numbered Bicycle Route	U.S. Numbered Bicycle Route
N.C. Numbered Bicycle Route	N.C. Numbered Bicycle Route	N.C. Numbered Bicycle Route	N.C. Numbered Bicycle Route
Interstate Interchange Number	Interstate Interchange Number	Interstate Interchange Number	Interstate Interchange Number
Secondary Road Number	Secondary Road Number	Secondary Road Number	Secondary Road Number
Utility Lines	Utility Lines	Utility Lines	Utility Lines
Railroad Line	Railroad Line	Railroad Line	Railroad Line
Railroad Station	Railroad Station	Railroad Station	Railroad Station
State Line	State Line	State Line	State Line
County Line	County Line	County Line	County Line
Smoothed Urban Boundaries	Smoothed Urban Boundaries	Smoothed Urban Boundaries	Smoothed Urban Boundaries
City Limits	City Limits	City Limits	City Limits
Ferry Route and Ramp	Ferry Route and Ramp	Ferry Route and Ramp	Ferry Route and Ramp
Narrow Creek or Stream	Narrow Creek or Stream	Narrow Creek or Stream	Narrow Creek or Stream
Wide River or Creek	Wide River or Creek	Wide River or Creek	Wide River or Creek
Reservoir, Pond or Lake w/ Island	Reservoir, Pond or Lake w/ Island	Reservoir, Pond or Lake w/ Island	Reservoir, Pond or Lake w/ Island
Dam or Dam with Lock	Dam or Dam with Lock	Dam or Dam with Lock	Dam or Dam with Lock
Waterfall	Waterfall	Waterfall	Waterfall
Swamp	Swamp	Swamp	Swamp
Community	Community	Community	Community
County Seat	County Seat	County Seat	County Seat
School	School	School	School
College or University	College or University	College or University	College or University
Hospital	Hospital	Hospital	Hospital
Coast Guard Station	Coast Guard Station	Coast Guard Station	Coast Guard Station
Church	Church	Church	Church
Church with Cemetery	Church with Cemetery	Church with Cemetery	Church with Cemetery
Cemetery	Cemetery	Cemetery	Cemetery
Patrol Station	Patrol Station	Patrol Station	Patrol Station
Correction or Penal Institution	Correction or Penal Institution	Correction or Penal Institution	Correction or Penal Institution
Quarry	Quarry	Quarry	Quarry
Mine or Pit	Mine or Pit	Mine or Pit	Mine or Pit
Highway Garage or Maint. Yard	Highway Garage or Maint. Yard	Highway Garage or Maint. Yard	Highway Garage or Maint. Yard
Highway Div. or Dist. Office	Highway Div. or Dist. Office	Highway Div. or Dist. Office	Highway Div. or Dist. Office
Military Post	Military Post	Military Post	Military Post
Wish Station	Wish Station	Wish Station	Wish Station
Fairgrounds	Fairgrounds	Fairgrounds	Fairgrounds
Historical Site	Historical Site	Historical Site	Historical Site
Points of Interest	Points of Interest	Points of Interest	Points of Interest
Post Office	Post Office	Post Office	Post Office
State Forest	State Forest	State Forest	State Forest
Lighthouse	Lighthouse	Lighthouse	Lighthouse
Mountain Summit	Mountain Summit	Mountain Summit	Mountain Summit
Mountain Gap	Mountain Gap	Mountain Gap	Mountain Gap
Overlook	Overlook	Overlook	Overlook
Rest Area	Rest Area	Rest Area	Rest Area
Visitor Ctr/Rest Area	Visitor Ctr/Rest Area	Visitor Ctr/Rest Area	Visitor Ctr/Rest Area
Welcome Ctr/Rest Area	Welcome Ctr/Rest Area	Welcome Ctr/Rest Area	Welcome Ctr/Rest Area
Airport	Airport	Airport	Airport
Military Airport	Military Airport	Military Airport	Military Airport
National / State Forest Boundary	National / State Forest Boundary	National / State Forest Boundary	National / State Forest Boundary
Wildlife Refuge	Wildlife Refuge	Wildlife Refuge	Wildlife Refuge
National / State Park Boundary	National / State Park Boundary	National / State Park Boundary	National / State Park Boundary
Game Lands Boundary	Game Lands Boundary	Game Lands Boundary	Game Lands Boundary
Military Reservation Boundary	Military Reservation Boundary	Military Reservation Boundary	Military Reservation Boundary
Indian Reservation Boundary	Indian Reservation Boundary	Indian Reservation Boundary	Indian Reservation Boundary

YADKIN COUNTY
NORTH CAROLINA

PREPARED BY THE
NORTH CAROLINA DEPARTMENT OF TRANSPORTATION
OPERATIONS PROGRAM MANAGEMENT UNIT - MAPPING SECTION
IN COOPERATION WITH THE
U.S. DEPARTMENT OF TRANSPORTATION
FEDERAL HIGHWAY ADMINISTRATION

SCALE
1 0 1
MILES

NORTH CAROLINA PLANE COORDINATE SYSTEM
LAMBERT CONFORMAL CONIC PROJECTION

SHEET 5 of 5