



PREPARED BY THE
NORTH CAROLINA DEPARTMENT OF TRANSPORTATION
OPERATIONS PROGRAM MANAGEMENT UNIT - MAPPING SECTION
IN COOPERATION WITH THE
U.S. DEPARTMENT OF TRANSPORTATION
FEDERAL HIGHWAY ADMINISTRATION

SCALE

1 0 1 2 3 4


 MILES

Figure 1 shows a 1D lattice chain with N sites. The sites are represented by boxes. The first and last sites are labeled '1' and 'N' respectively. The middle site is labeled '0'. The chain is labeled 'M' at the right end.

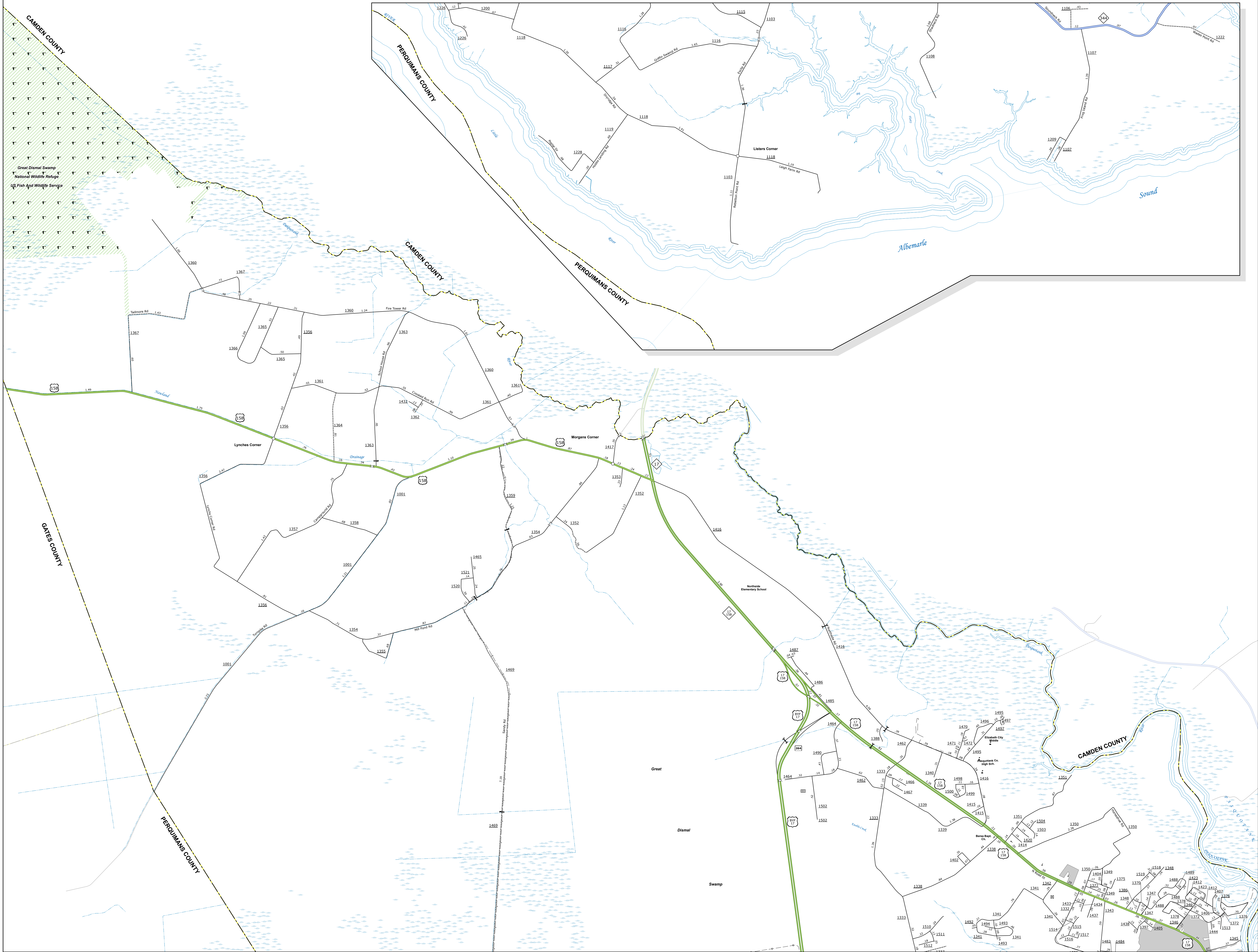
SHEET 1 OF 3

COPIES OF THIS MAP ARE AVAILABLE TO THE
PUBLIC AT NOMINAL COST. CONTACT US TO ORDER:
mappingsupport@ncdot.gov
<https://connect.ncdot.gov/resources/State-Mapping/Pages/Ordering-Maps.aspx>
(919) 834-8480

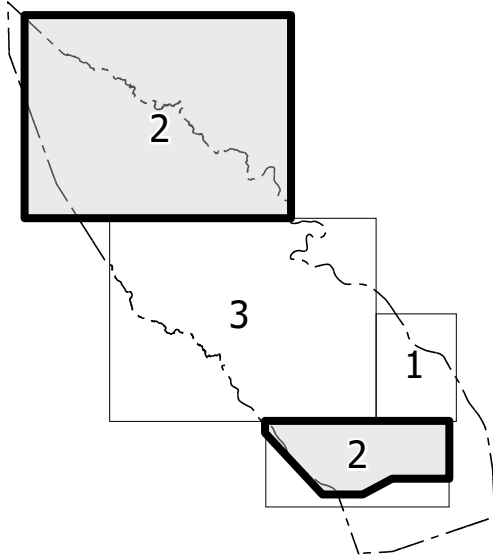
TERMS OF USE: The Mapping Section's goal is to provide the most accurate and current information possible. Map data is compiled from numerous sources with varying dates of publication and map accuracy standards. As a result, the accuracy, currency, and completeness of the data provided will vary. The North Carolina Department of Transportation shall not be held liable for any errors in the map data. This map cannot be construed to be a legal document. The information shown on this map was last updated in October 2024. For digital copies of this map or additional map products, visit <https://connect.ncdot.gov/resources/State-Mapping>.

TERMS OF USE: The Mapping Section's goal is to provide the most accurate and current information possible. Map data is compiled from numerous sources with varying dates of publication and map accuracy standards. As a result, the accuracy, currency and completeness of this information cannot be guaranteed. This information shown on this map was last updated in October 2024.

COPIES OF THIS MAP ARE AVAILABLE TO THE PUBLIC AT THE PASQUOTANK COUNTY OFFICE, 1000 N. MAIN ST., PASQUOTANK, NC 27563. (704) 344-4400.

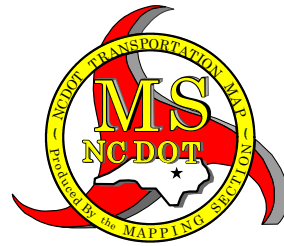


Sheet Key



LEGEND

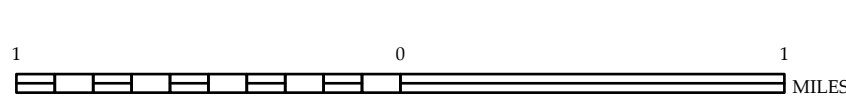
- INTERSTATE US NC Divided Hwy Undivided Hwy
- BLUES RIDGE PARKWAY
- CONCRETE-PAVED ROAD
- HARD SURFACED ROAD
- NON-SURFACED ROAD
- PROPOSEDLY GRAVEN ROAD
- PROPOSED LOCATION
- INTERSECTION
- STANDARD ROAD BRIDGE
- RAILROAD BRIDGE
- DRAW SPAN ON BRIDGE
- PEDESTRIAN BRIDGE
- PEDESTRIAN WALKWAY
- PEDESTRIAN UNDERPASS
- VEHICLE UNDERPASS
- TUNNEL
- CULVERT
- WYE
- INTERSTATE HIGHWAY
- U.S. NUMBERED HIGHWAY
- U.S. NUMBERED BI-CYCLE ROUTE
- U.S. NUMBERED BI-CYCLE ROUTE
- INTERSTATE RHYTHM CHANGE NUMBER
- NO. OF ROAD NUMBER
- UTILITY LINES
- RAILROAD LINE
- RAILROAD STATION
- STATE LINE
- COUNTY LINE
- UNINCORPORATED TOWN BOUNDARIES
- CITY LIMITS
- PERMIT ROUTE AND RAMP
- NARROW CREEK OR STREAM
- WIDE RIVER OR CREEK
- RESERVOIR, POND OR LAKE W/ ISLAND
- DAM OR DAM WITH LOCK
- WATERFALL
- SWAMP
- COMMUNITY
- COUNTY SEAT
- SCHOOL
- COLLEGE OR UNIVERSITY
- HOSPITAL
- COAST GUARD STATION
- CHURCH
- CHURCH WITH CEMETERY
- CEMETERY
- POWELL STATION
- CORRECTION OR PENAL INSTITUTION
- GAZARY
- MINI OR PET
- HIGHWAY GARAGE OR MAINT. YARD
- HIGHWAY DIV. OR DIST. OFFICE
- MILITARY POST
- WATER STATION
- FARM BOUNDS
- HISTORICAL SITE
- POINTS OF INTEREST
- FOOT OF RIVER
- STATE FOREST
- LIGHTHOUSE
- MOUNTAIN SUMMIT
- MOUNTAIN GAP
- OVERLOOK
- REST AREA
- WILDERNESS REST AREA
- WILDERNESS REST AREA
- AIRPORT
- MILITARY AIRPORT
- NATIONAL - STATE FOREST BOUNDARY
- WILDLIFE REFUGE
- NATIONAL - STATE PARK BOUNDARY
- GAME LANDS BOUNDARY
- MILITARY RESERVATION BOUNDARY
- DIKMAN RESERVATION BOUNDARY



PASQUOTANK COUNTY NORTH CAROLINA

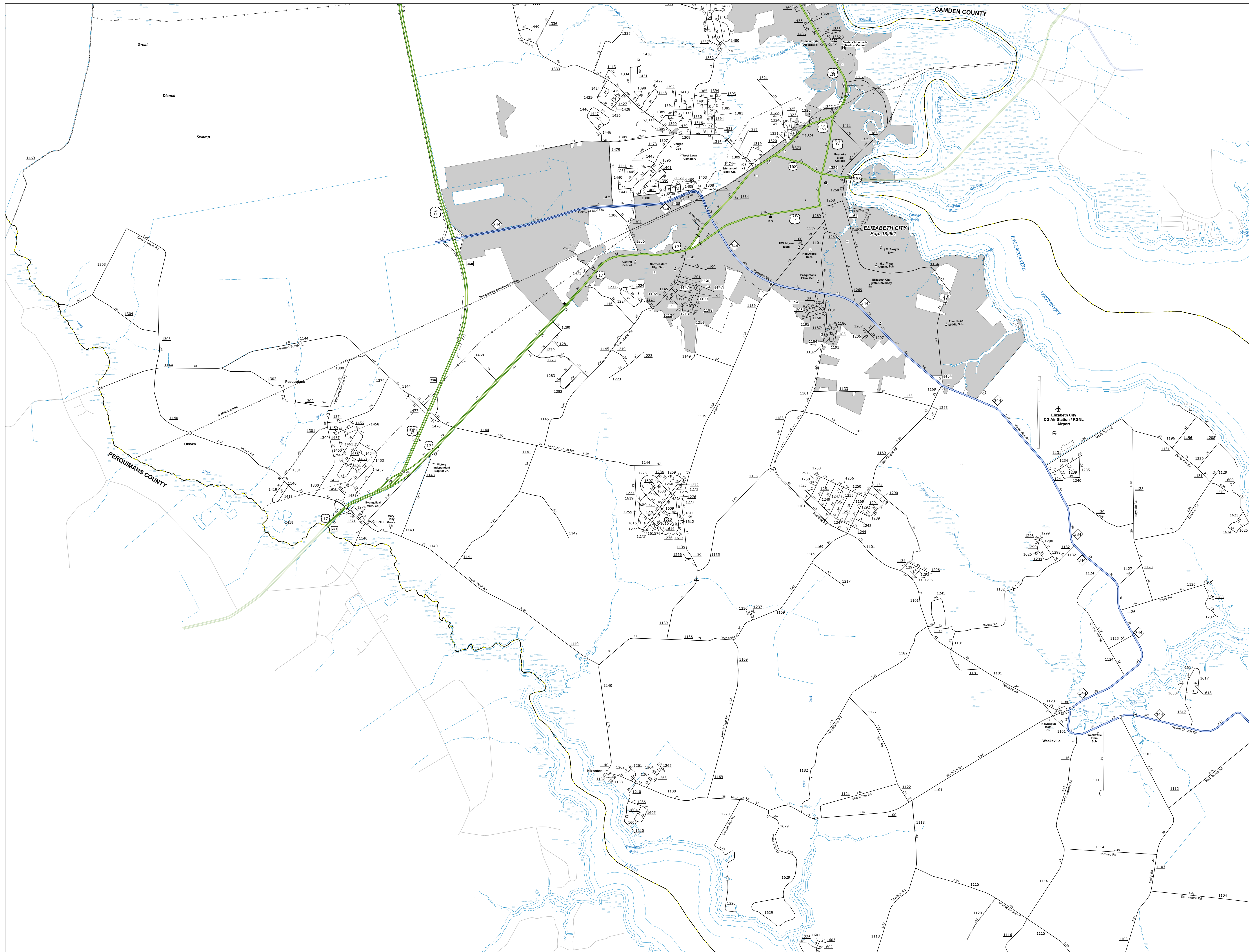
PREPARED BY THE
NORTH CAROLINA DEPARTMENT OF TRANSPORTATION
OPERATIONS PROGRAM MANAGEMENT UNIT - MAPPING SECTION
IN COOPERATION WITH THE
U.S. DEPARTMENT OF TRANSPORTATION
FEDERAL HIGHWAY ADMINISTRATION

SCALE

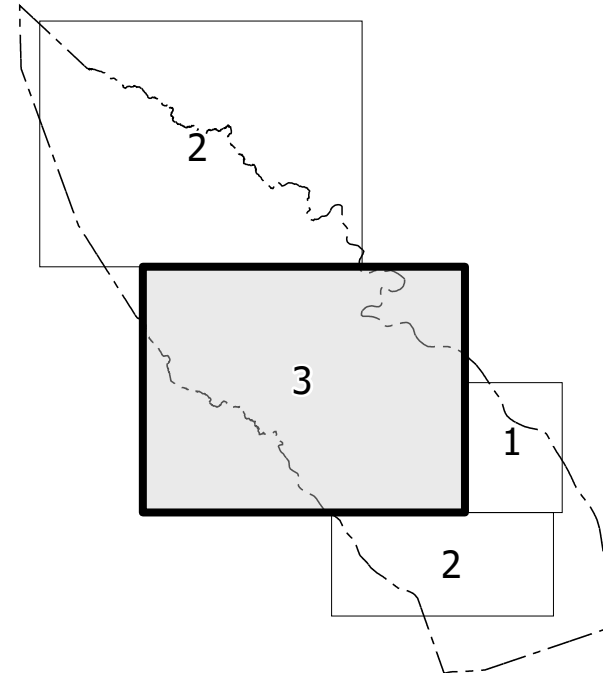


NORTH CAROLINA PLANE COORDINATE SYSTEM
LAMBERT CONFORMAL CONIC PROJECTION

COPIES OF THIS MAP ARE AVAILABLE TO THE PUBLIC AT NOMINAL COST. CONTACT US TO ORDER: mappingssupport@ncdot.gov
<https://connect.ncdot.gov/resources/State-Mapping>

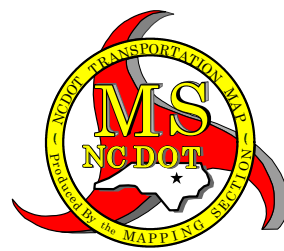


Sheet Key



LEGEND

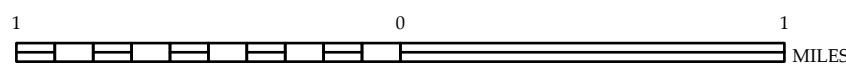
- [illegible]



PASQUOTANK COUNTY
NORTH CAROLINA

PREPARED BY THE
NORTH CAROLINA DEPARTMENT OF TRANSPORTATION
OPERATIONS PROGRAM MANAGEMENT UNIT - MAPPING SECTION
IN COOPERATION WITH THE
U.S. DEPARTMENT OF TRANSPORTATION
FEDERAL HIGHWAY ADMINISTRATION

SCALE



NORTH CAROLINA PLANE COORDINATE SYSTEM
LAMBERT CONFORMAL CONIC PROJECTION

SHEET 3 of 3