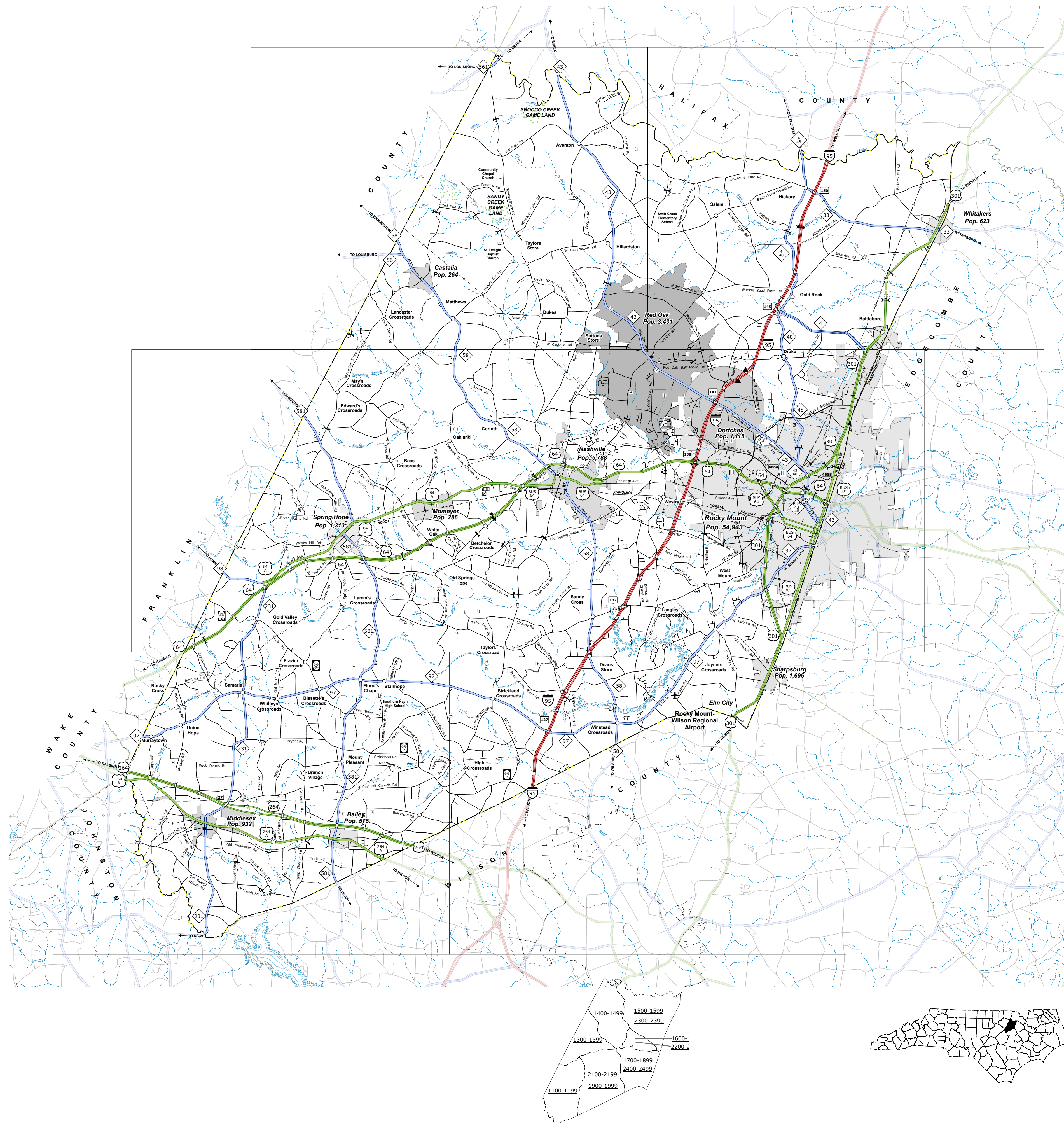


COPIES OF THIS MAP ARE AVAILABLE TO THE
PUBLIC AT NOMINAL COST. CONTACT US TO ORDER:
mapping.support@dcid.gov
<https://connect.ncsl.gov/resources/State-Mapping/Pages/Ordering-Maps.aspx>
(919) 834-8480



A 3x2 grid of squares. A dashed line connects the top-left corner of the top-left square to the bottom-right corner of the bottom-right square. The path is labeled with numbers 2, 3, 4, 5, 6, and 7 at various points along the line.

[illegible]

PREPARED BY THE
NORTH CAROLINA DEPARTMENT OF TRANSPORTATION
OPERATIONS PROGRAM MANAGEMENT UNIT - MAPPING SECTION
IN COOPERATION WITH THE
U.S. DEPARTMENT OF TRANSPORTATION
FEDERAL HIGHWAY ADMINISTRATION

SHEET 1 OF 7

COPIES OF THIS MAP ARE AVAILABLE TO THE
PUBLIC AT NOMINAL COST. CONTACT US TO ORDER:
maaps@nj.gov
<https://connect.nj.gov/resources/State-Mapping-Page/Ordering-Maps.aspx>
(919) 834-8480

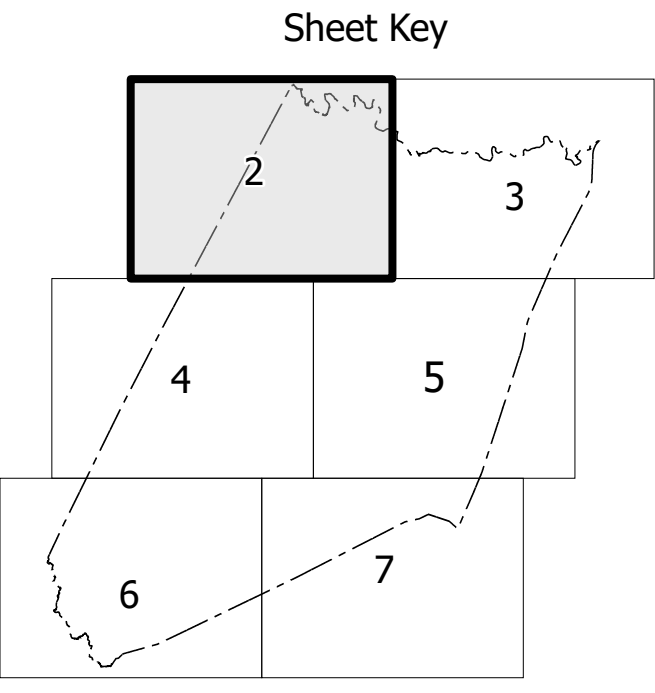
[illegible]

Figure 1 shows a schematic diagram of a scale. It consists of a horizontal bar divided into 10 equal segments by vertical lines. The first segment on the left is labeled '1'. The next eight segments are labeled '0'. The final segment on the right is labeled '1'. The word 'SCALE' is centered above the bar. The label 'MIL' is positioned at the right end of the bar.

SHEET 2 of 7

DIVISION 4 DISTRICT 2 NASH COUNTY NORTH CAROLINA FIPS 1

COPIES OF THIS MAP ARE AVAILABLE TO THE
PUBLIC AT NOMINAL COST. CONTACT US TO ORDER:
msa@ncdnc.org or 819-834-8480
<https://connect.ncdnc.gov/resources/State-Mapping/Pages/Ordering-Maps.aspx>

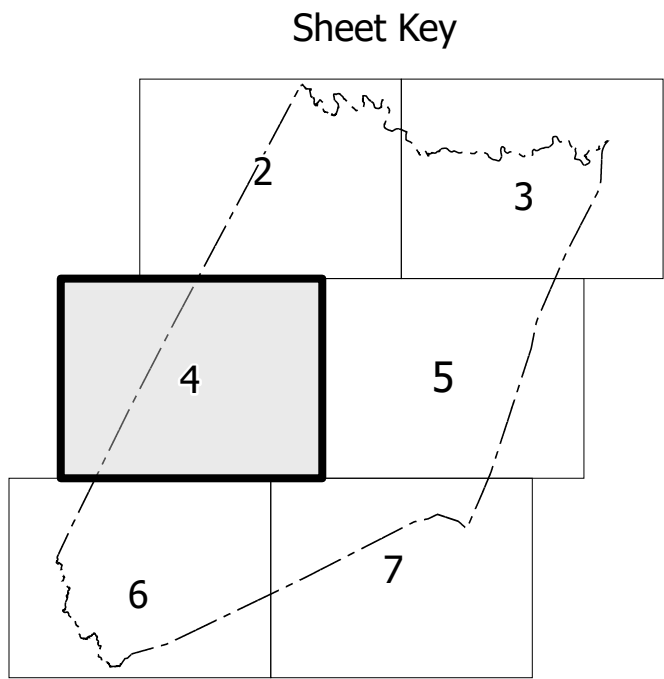
[illegible]

SALE



TERMS OF USE: The Mapping Services portal is provided to provide the most accurate and current information possible. Map data is compiled from numerous sources with varying degrees of accuracy and may not be 100% accurate. The accuracy, currency, and completeness of the information is not guaranteed. The information shown on this map was last updated on September 2024. For more information, please visit <https://www.ncdot.gov/MapServices/About/MapServices.aspx>.

COPIES OF THIS MAP ARE AVAILABLE TO THE PUBLIC AT NO CHARGE. CONTACT US TO ORDER. maps@ncdot.gov or <https://www.ncdot.gov/MapServices/About/MapServices.aspx>.



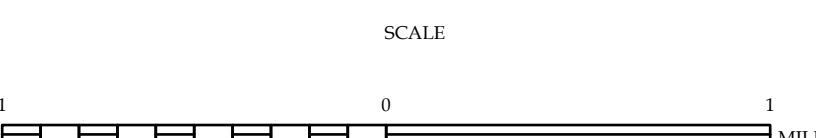
LEGEND

- INTERSTATE US NC Divided Hwy Updated Hwy
- BLVD HIGHWAY
- CONCRETE/PAVED ROAD
- GRAVEL/UNPAVED ROAD
- NON-SYSTEM ROAD
- PROPOSED/PLANNED ROAD
- PROPOSED LOCATION
- INTERSECTION/INTERCHANGE
- STANDARD ROAD BRIDGE
- RAILROAD BRIDGE
- DRAW SPAN OR BRIDGE
- PEDESTRIAN BRIDGE
- PEDESTRIAN WALKWAY
- PEDESTRIAN UNDERPASS
- TUNNEL
- CLAYPIT
- WELL
- INTERSTATE HIGHWAY
- U.S. NUMBERED HIGHWAY
- U.S. NUMBERED HIGHWAY
- U.S. NUMBERED BIKEWAY ROUTE
- U.S. NUMBERED BIKEWAY ROUTE
- INTERSTATE BIKEWAY NUMBER
- U.S. NUMBERED ROAD NUMBER
- UTILITY LINES
- RAILROAD LINE
- RAILROAD STATION
- RAILROAD
- STATE LINE
- COUNTY LINE
- UNINCORPORATED TOWN BOUNDARIES
- CITY LIMITS
- FERRY ROUTE AND RAMP
- NARROW CREEK OR STREAM
- WIDE RIVER OR CREEK
- RAILROAD, FERRY OR LAKE W/ ISLAND
- DAM OR DAM WITH LOCK
- WATERFALL
- SWAMP
- COMMUNITY
- COUNTY SEAT
- SCHOOL
- COLLEGE OR UNIVERSITY
- HOSPITAL
- COAST GUARD STATION
- CHURCH
- CHURCH WITH CEMETERY
- CEMETERY
- POWERS STATION
- CORRECTION OR PENAL INSTITUTION
- CLAYPIT
- MINE OR PIT
- HIGHWAY GARAGE OR MAINT. YARD
- HIGHWAY DIV. OR DIST. OFFICE
- MILITARY POST
- WATER STATION
- HAZARDOUS SITE
- POINTS OF INTEREST
- POST OFFICE
- STATE FOREST
- LIGHTHOUSE
- MOUNTAIN SUMMIT
- MOUNTAIN GAP
- OUTLETS
- REST AREA
- WELCOME/FOREST AREA
- AIRPORT
- MILITARY AIRPORT
- NATIONAL - STATE FOREST BOUNDARY
- WILDLIFE REFUGE
- NATIONAL - STATE PARK BOUNDARY
- GAME LANDS BOUNDARY
- MILITARY RESERVATION BOUNDARY
- INDIAN RESERVATION BOUNDARY



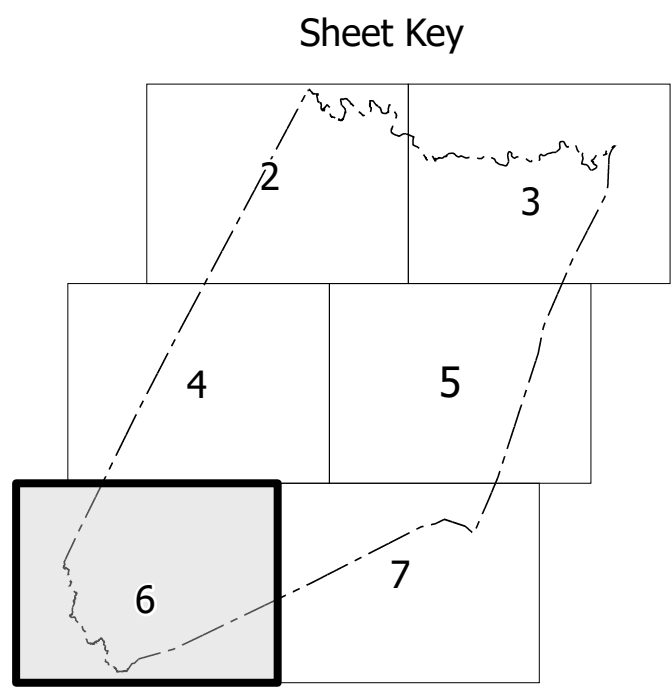
NASH COUNTY NORTH CAROLINA

PREPARED BY THE
NORTH CAROLINA DEPARTMENT OF TRANSPORTATION
OPERATIONS PROGRAM MANAGEMENT UNIT - MAPPING SECTION
IN COOPERATION WITH THE
U.S. DEPARTMENT OF TRANSPORTATION
FEDERAL HIGHWAY ADMINISTRATION



NORTH CAROLINA PLANE COORDINATE SYSTEM
LAMBERT CONFORMAL CONIC PROJECTION

COPIES OF THIS MAP ARE AVAILABLE TO THE PUBLIC AT NOMINAL COST. CONTACT US TO ORDER:
maps@connect.ncdot.gov
<https://connect.ncdot.gov/resources/State-Mapping/Pages/Ordering-Maps.aspx>
 (919) 834-8480

[illegible]

SCALE



TERMS OF USE: The Mapping Section shall provide the most accurate and current information possible. Map data is compiled from numerous sources with varying levels of detail and accuracy. The accuracy, currency, and completeness of the information shown on this map cannot be guaranteed. The information shown on this map was last updated in September 2024. For a complete list of map data sources, visit <https://www.ncdot.gov/transportation/Mapping/MapDataSources.aspx>.

COPIES OF THIS MAP ARE AVAILABLE TO THE PUBLIC AT NO CHARGE. TO ORDER A COPY, VISIT <https://www.ncdot.gov/transportation/Mapping/MapDataSources.aspx> OR CONTACT US AT 1-800-368-6848.

