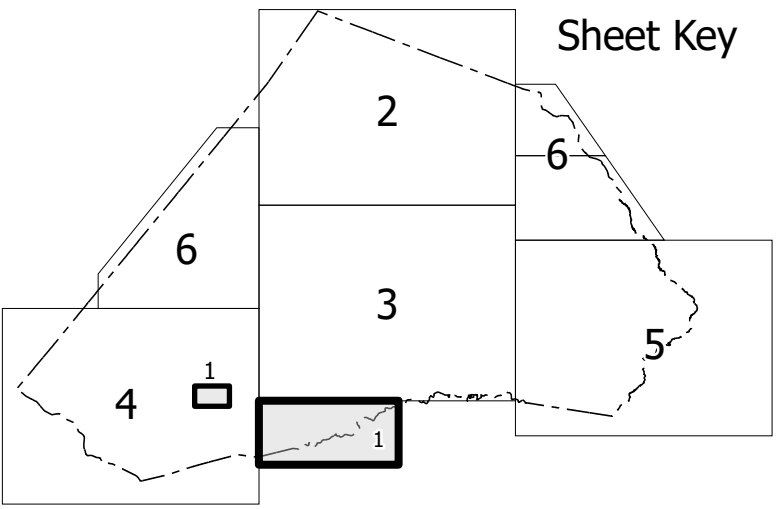
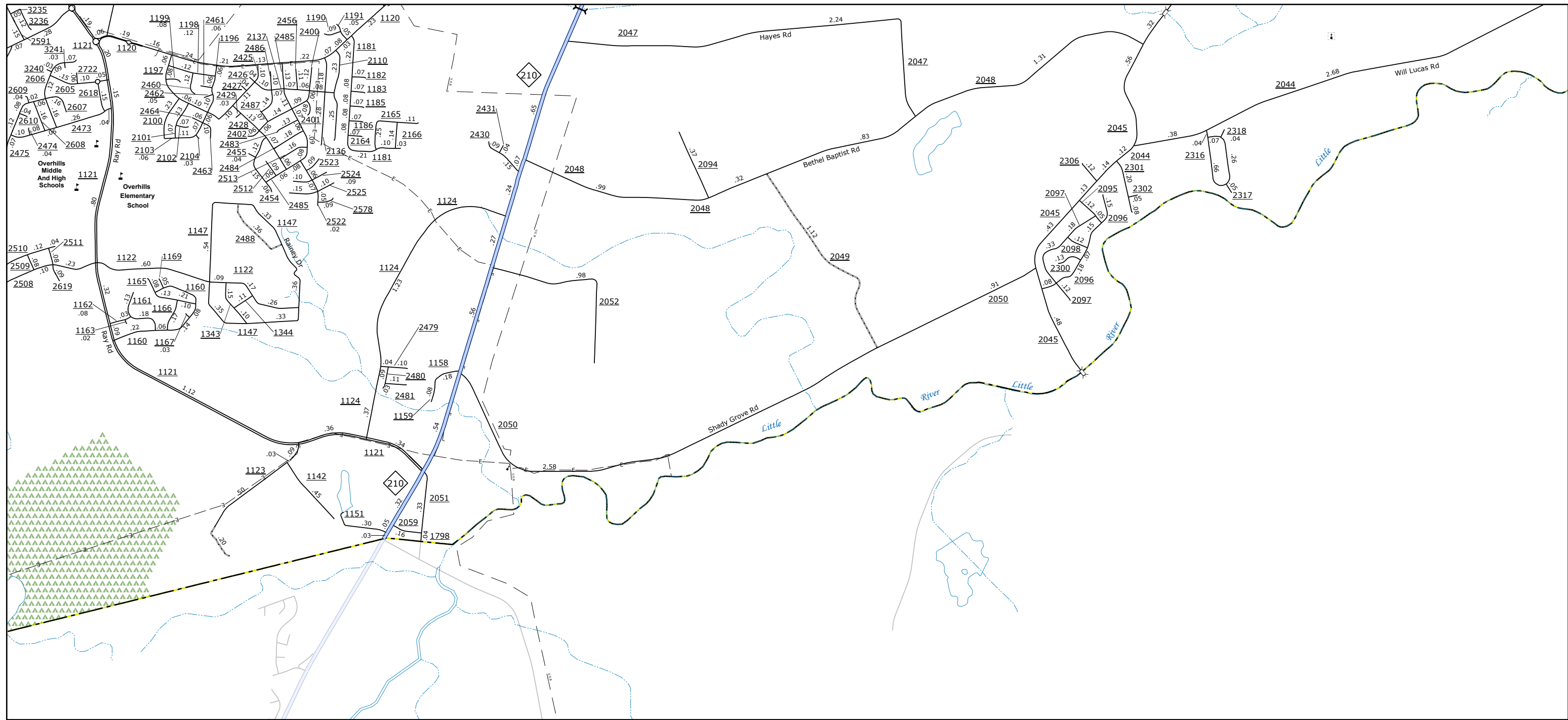
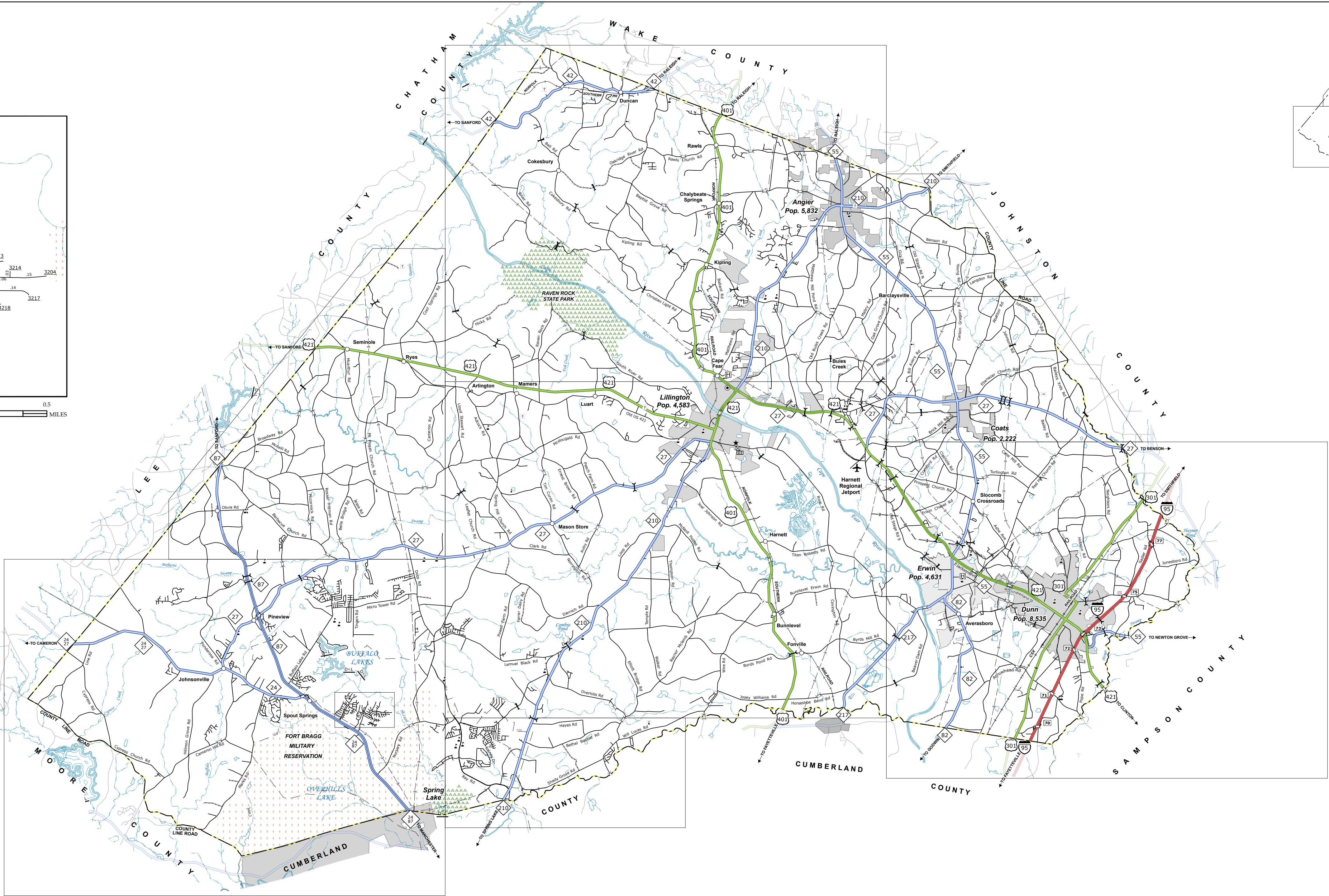
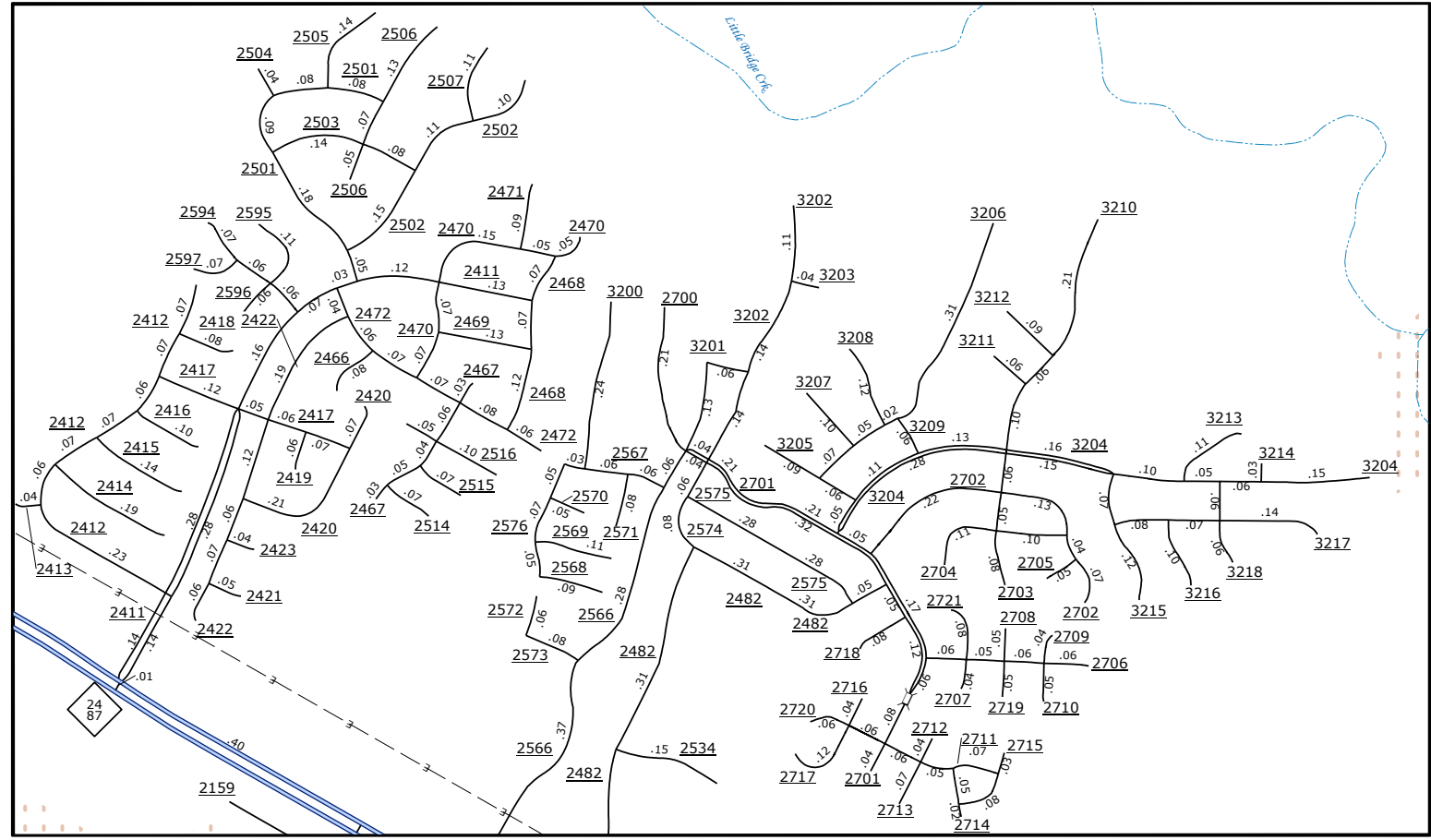
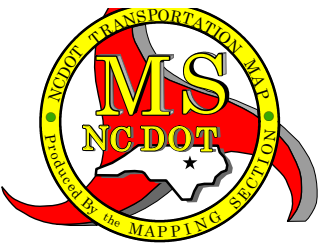


TERMS OF USE: The Mapping Section's goal is to provide the most accurate and current information available. Map data is compiled from numerous sources with varying degrees of publication and may contain inaccuracies. As a result, the accuracy, currency, and completeness of this information cannot be guaranteed. The information shown on this map was last updated in September 2024. For digital copies of this map or additional map products, visit <https://www.ncdot.gov/transportation/transportation-planning-and-design/mapping-section>.



LEGEND

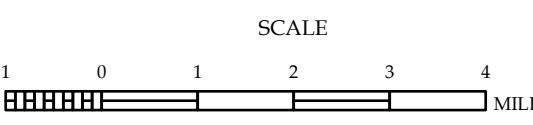
- INTERSTATE US NC
- Divided Hwy
- Undivided Hwy
- BLUE RIDGE PARKWAY
- UNPAVED SURFACED ROAD
- HARD SURFACED ROAD
- NON-SYSTEM ROAD
- PROVISIONALLY DRAWN ROAD
- PROTECTED LOCATION
- INTERSECTION DISTANCE
- STANDARD ROAD BRIDGE
- RAILROAD BRIDGE
- DRAW SPAN OR BRIDGE
- PEDESTRIAN BRIDGE
- PEDESTRIAN WALKWAY
- PEDESTRIAN UNDERPASS
- VEHICULAR UNDERPASS
- TUNNEL
- CULVERT
- PIPE
- INTERSTATE HIGHWAY
- U.S. NUMBERED HIGHWAY
- N.C. NUMBERED HIGHWAY
- U.S. NUMBERED BICYCLE ROUTE
- N.C. NUMBERED BICYCLE ROUTE
- INTERSTATE INTERCHANGE NUMBER
- SECONDARY ROAD NUMBER
- TELETYPE HIGHWAY
- UTILITY LINES
- RAILROAD LINE
- RAILROAD STATION
- INSET AREA
- STATE LINE
- COUNTY LINE
- SMOOTHED URBAN BOUNDARIES
- CITY LIMITS
- FERRY ROUTE AND RAMP
- NARROW CREEK OR STREAM
- WIDE RIVER OR CREEK
- RESERVOIR, POND OR LAKE W/ ISLAND
- DAM OR DAM WITH LOCK
- WATERFALL
- SWAMP
- COMMUNITY
- COUNTY SEAT
- SCHOOL
- COLLEGE OR UNIVERSITY
- HOSPITAL
- COAST GUARD STATION
- CHURCH
- CHURCH WITH CEMETERY
- CEMETERY
- PATROL STATION
- CORRECTION OR PENAL INSTITUTION
- QUARRY
- MINE OR PIT
- HIGHWAY GARAGE OR MAINT. YARD
- HIGHWAY DIV. OR DIST. OFFICE
- MILITARY POST
- WEIGH STATION
- FAIRGROUNDS
- HISTORICAL SITE
- POINTS OF INTEREST
- POST OFFICE
- STATE FOREST
- LIGHTHOUSE
- MOUNTAIN SUMMIT
- MOUNTAIN GAP
- OVERLOOK
- REST AREA
- VISITOR CTR REST AREA
- WELCOME CTR REST AREA
- AIRPORT
- MILITARY AIRPORT
- NATIONAL / STATE FOREST BOUNDARY
- WILDLIFE REFUGE
- NATIONAL / STATE PARK BOUNDARY
- GAME LANDS BOUNDARY
- MILITARY RESERVATION BOUNDARY
- INDIAN RESERVATION BOUNDARY



HARNETT COUNTY

NORTH CAROLINA

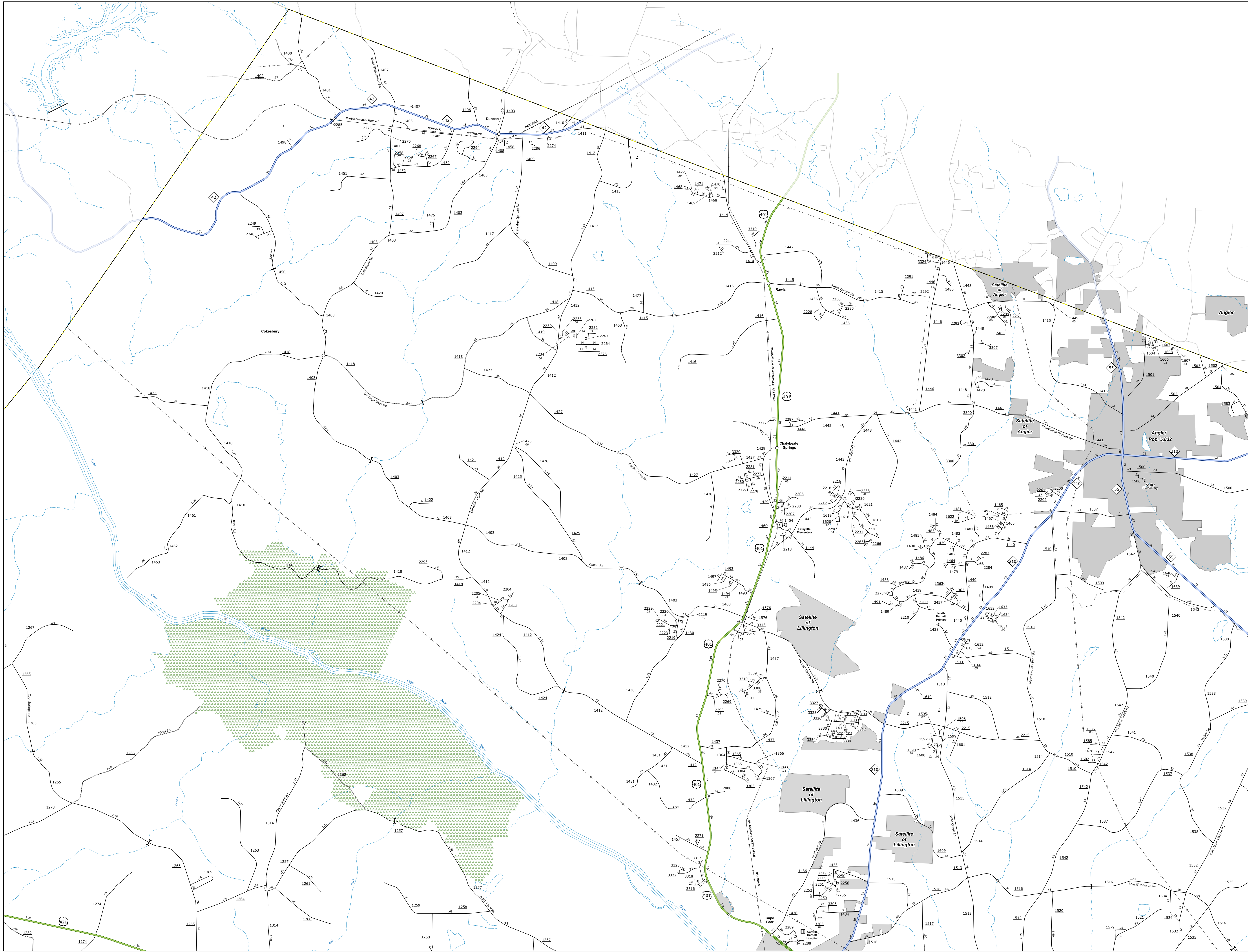
PREPARED BY THE
NORTH CAROLINA DEPARTMENT OF TRANSPORTATION
OPERATIONS PROGRAM MANAGEMENT UNIT - MAPPING SECTION
IN COOPERATION WITH THE
U.S. DEPARTMENT OF TRANSPORTATION
FEDERAL HIGHWAY ADMINISTRATION



NORTH CAROLINA PLANE COORDINATE SYSTEM
LAMBERT CONFORMAL CONIC PROJECTION

TERMS OF USE: The Mapping Section's goal is to provide the most accurate and current information available. Map data is compiled from numerous sources with varying degrees of publication and may contain inaccuracies. As a result, the accuracy, currency, and completeness of this information cannot be guaranteed. The information shown on this map was last updated in September 2024. For original copies of this map or additional map products, visit <https://www.ncdot.gov/Map-Data/Products/Maps.aspx>.

COPIES OF THIS MAP ARE AVAILABLE TO THE PUBLIC AT NO CHARGE. FOR FURTHER INFORMATION, CONTACT US TO ORDER. MapData@ncdot.gov or call 1-800-368-3346. <https://www.ncdot.gov/Map-Data/Products/Maps.aspx>



Sheet Key

LEGEND

INTERSTATE	US	NC	Divided Hwy
Blue Ridge Parkway			Undivided Hwy
Unpaved Surfaced Road			
Hard Surfaced Road			
Non-System Road			
Provisionally Drawn Road			
Projected Location			
Intersection Distance			
Standard Road Bridge			
Railroad Bridge			
Draw Span on Bridge			
Pedestrian Bridge			
Pedestrian Walkway			
Pedestrian Underpass			
Vehicle Underpass			
Tunnel			
Culvert			
Pipe			
Interstate Highway			
U.S. Numbered Highway			
N.C. Numbered Highway			
U.S. Numbered Bicycle Route			
N.C. Numbered Bicycle Route			
Interstate Interchange Number			
Secondary Road Number			
Utility Lines			
Railroad Line			
Railroad Station			
Inset Area			
State Line			
County Line			
Smoothed Urban Boundaries			
City Limits			
Ferry Route and Ramp			
Narrow Creek or Stream			
Wide River or Creek			
Reservoir, Pond or Lake w/ Island			
Dam or Dam with Lock			
Waterfall			
Swamp			
Community			
County Seat			
School			
College or University			
Hospital			
Coast Guard Station			
Church			
Church with Cemetery			
Cemetery			
Patrol Station			
Correction or Penal Institution			
Quarry			
Mine or Pit			
Highway Garage or Maint. Yard			
Highway Div. or Dist. Office			
Military Post			
Weight Station			
Fairgrounds			
Historical Site			
Points of Interest			
Post Office			
State Forest			
Lighthouse			
Mountain Summit			
Mountain Gap			
Overlook			
Rest Area			
Visitor Ctr. Rest Area			
Welcome Ctr. Rest Area			
Airport			
Military Airport			
National / State Forest Boundary			
Wildlife Refuge			
National / State Park Boundary			
Game Lands Boundary			
Military Reservation Boundary			
Indian Reservation Boundary			

N

1 0 1 MILES

NORTH CAROLINA PLANE COORDINATE SYSTEM
LAMBERT CONFORMAL CONIC PROJECTION

HARNETT COUNTY
NORTH CAROLINA

PREPARED BY THE
NORTH CAROLINA DEPARTMENT OF TRANSPORTATION
OPERATIONS PROGRAM MANAGEMENT UNIT - MAPPING SECTION
IN COOPERATION WITH THE
U.S. DEPARTMENT OF TRANSPORTATION
FEDERAL HIGHWAY ADMINISTRATION

SCALE

DIVISION 6 DISTRICT 2 HARNETT COUNTY NORTH CAROLINA FIPS 085

SHEET 2 of 6

TERMS OF USE: The Mapping Section's goal is to provide the most accurate and current information possible. Map data is compiled from numerous sources with varying dates of publication and may contain inaccuracies. As a result, the accuracy, currency, and completeness of this information cannot be guaranteed. The information shown on this map was last updated in September 2024. For original copies of this map or additional map products, visit <https://www.ncdot.gov/Map-Data/Products/Maps.aspx>.

COPIES OF THIS MAP ARE AVAILABLE TO THE PUBLIC AT NO CHARGE. CONTACT US TO ORDER: maps@ncdot.gov or 1-800-368-6848. This map is available for use in the public domain. No warranty is made by the State of North Carolina for any errors or omissions.



Sheet Key

LEGEND

INTERSTATE

US

NC

Divided Hwy

Undivided Hwy

BLUE RIDGE PARKWAY

UNPAVED SURFACED ROAD

HARD SURFACED ROAD

NON-SYSTEM ROAD

PROVISIONALLY DRAWN ROAD

PROJECTED LOCATION

INTERSECTION DISTANCE

STANDARD ROAD BRIDGE

RAILROAD BRIDGE

DRAW SPAN ON BRIDGE

PEDESTRIAN BRIDGE

PEDESTRIAN WALKWAY

PEDESTRIAN UNDERPASS

VEHICULAR UNDERPASS

TUNNEL

CULVERT

PIPE

INTERSTATE HIGHWAY

U.S. NUMBERED HIGHWAY

N.C. NUMBERED HIGHWAY

U.S. NUMBERED BICYCLE ROUTE

N.C. NUMBERED BICYCLE ROUTE

INTERSTATE INTERCHANGE NUMBER

SECONDARY ROAD NUMBER

UTILITY LINES

RAILROAD LINE

RAILROAD STATION

INSET AREA

STATE LINE

COUNTY LINE

SMOOTHED URBAN BOUNDARIES

CITY LIMITS

FERRY ROUTE AND RAMP

NARROW CREEK OR STREAM

WIDE RIVER OR CREEK

RESERVOIR, POND OR LAKE W/ ISLAND

DAM OR DAM WITH LOCK

WATERFALL

SWAMP

COMMUNITY

COUNTY SEAT

SCHOOL

COLLEGE OR UNIVERSITY

HOSPITAL

COAST GUARD STATION

CHURCH

CHURCH WITH CEMETERY

CEMETERY

PATROL STATION

CORRECTION OR PENAL INSTITUTION

QUARRY

MINE OR PIT

HIGHWAY GARAGE OR MAINT. YARD

HIGHWAY DIV. OR DIST. OFFICE

MILITARY POST

WEIGH STATION

FAIRGROUNDS

HISTORICAL SITE

POINTS OF INTEREST

POST OFFICE

STATE FOREST

LIGHTHOUSE

MOUNTAIN SUMMIT

MOUNTAIN GAP

OVERLOOK

REST AREA

VISITOR CTR. REST AREA

WELCOME CTR. REST AREA

AIRPORT

MILITARY AIRPORT

NATIONAL / STATE FOREST BOUNDARY

WILDLIFE REFUGE

NATIONAL / STATE PARK BOUNDARY

GAME LANDS BOUNDARY

MILITARY RESERVATION BOUNDARY

INDIAN RESERVATION BOUNDARY

HARNETT COUNTY

NORTH CAROLINA

PREPARED BY THE

NORTH CAROLINA DEPARTMENT OF TRANSPORTATION

OPERATIONS PROGRAM MANAGEMENT UNIT - MAPPING SECTION

IN COOPERATION WITH THE

U.S. DEPARTMENT OF TRANSPORTATION

FEDERAL HIGHWAY ADMINISTRATION

SCALE

1

0

1

MILES

NORTH CAROLINA PLANE COORDINATE SYSTEM

LAMBERT CONFORMAL CONIC PROJECTION

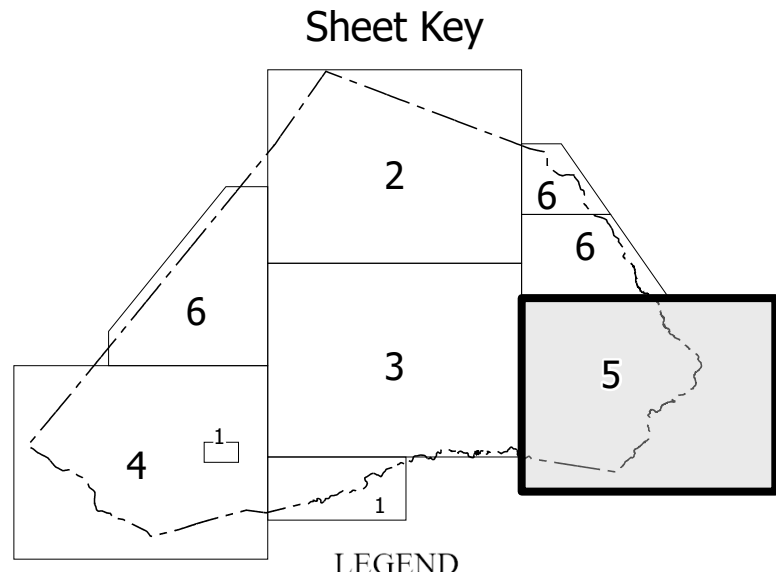
DIVISION 6 DISTRICT 2 HARNETT COUNTY NORTH CAROLINA FIPS 085

SHEET 3 of 6

COPIES OF THIS MAP ARE AVAILABLE TO THE
PUBLIC AT NOMINAL COST. CONTACT US TO ORDER:
maporders@portgis.mn.gov
<https://connect.mn.gov/resources/State-Mapping/Pages/Ordering-Maps.aspx>
(919) 834-9480



TERMS OF USE: The Mapping Section's goal is to provide the most accurate and current information possible. Map data is compiled from numerous sources with varying dates of publication and may contain inaccuracies. As a result, the accuracy, currency, and completeness of this information cannot be guaranteed. The information shown on this map was last updated in September 2024. For original copies of this map or additional map products, visit <https://www.ncdot.gov/MapProducts/MapProducts.aspx>.

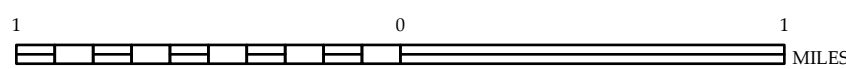


- LEGEND**
- INTERSTATE US NC
 - Divided Hwy
 - Undivided Hwy
 - BLUE RIDGE PARKWAY
 - UNPAVED SURFACED ROAD
 - HARD SURFACED ROAD
 - NON-SYSTEM ROAD
 - PROVISIONALLY DRAWN ROAD
 - PROJECTED LOCATION
 - INTERSECTION DISTANCE
 - STANDARD ROAD BRIDGE
 - RAILROAD BRIDGE
 - DRAW SPAN ON BRIDGE
 - PEDESTRIAN BRIDGE
 - PEDESTRIAN WALKWAY
 - PEDESTRIAN UNDERPASS
 - VEHICULAR UNDERPASS
 - TUNNEL
 - CULVERT
 - PIPE
 - INTERSTATE HIGHWAY
 - U.S. NUMBERED HIGHWAY
 - N.C. NUMBERED HIGHWAY
 - U.S. NUMBERED BICYCLE ROUTE
 - N.C. NUMBERED BICYCLE ROUTE
 - INTERSTATE INTERCHANGE NUMBER
 - SECONDARY ROAD NUMBER
 - TELEPHONE
 - UTILITY LINES
 - RAILROAD LINE
 - RAILROAD STATION
 - INSET AREA
 - STATE LINE
 - COUNTY LINE
 - SMOOTHED URBAN BOUNDARIES
 - CITY LIMITS
 - FERRY ROUTE AND RAMP
 - NARROW CREEK OR STREAM
 - WIDE RIVER OR CREEK
 - RESERVOIR, POND OR LAKE W/ ISLAND
 - DAM OR DAM WITH LOCK
 - WATERFALL
 - SWAMP
 - COMMUNITY
 - COUNTY SEAT
 - SCHOOL
 - COLLEGE OR UNIVERSITY
 - HOSPITAL
 - COAST GUARD STATION
 - CHURCH
 - CHURCH WITH CEMETERY
 - CEMETERY
 - PATROL STATION
 - CORRECTION OR PENAL INSTITUTION
 - QUARRY
 - MINE OR PIT
 - HIGHWAY GARAGE OR MAINT. YARD
 - HIGHWAY DIV. OR DIST. OFFICE
 - MILITARY POST
 - WEIGH STATION
 - FAIRGROUNDS
 - HISTORICAL SITE
 - POINTS OF INTEREST
 - POST OFFICE
 - STATE FOREST
 - LIGHTHOUSE
 - MOUNTAIN SUMMIT
 - MOUNTAIN GAP
 - OVERLOOK
 - REST AREA
 - VISITOR CTR. REST AREA
 - WELCOME CTR. REST AREA
 - AIRPORT
 - MILITARY AIRPORT
 - NATIONAL / STATE FOREST BOUNDARY
 - WILDLIFE REFUGE
 - NATIONAL / STATE PARK BOUNDARY
 - GAME LANDS BOUNDARY
 - MILITARY RESERVATION BOUNDARY
 - INDIAN RESERVATION BOUNDARY

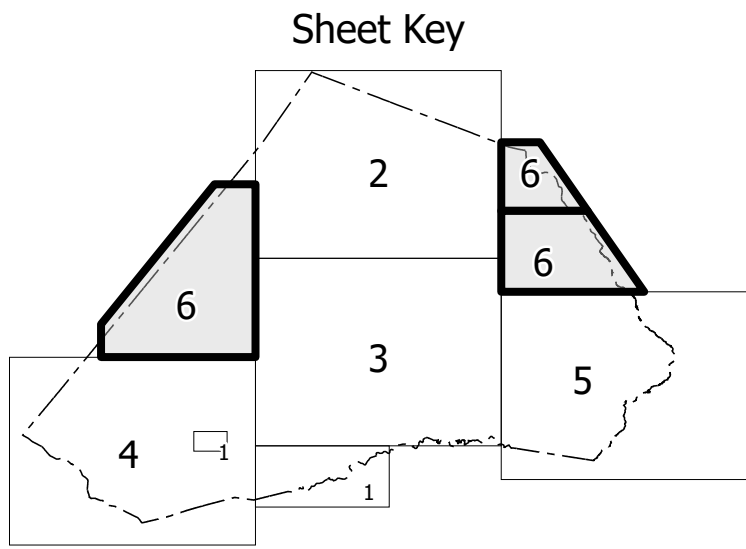
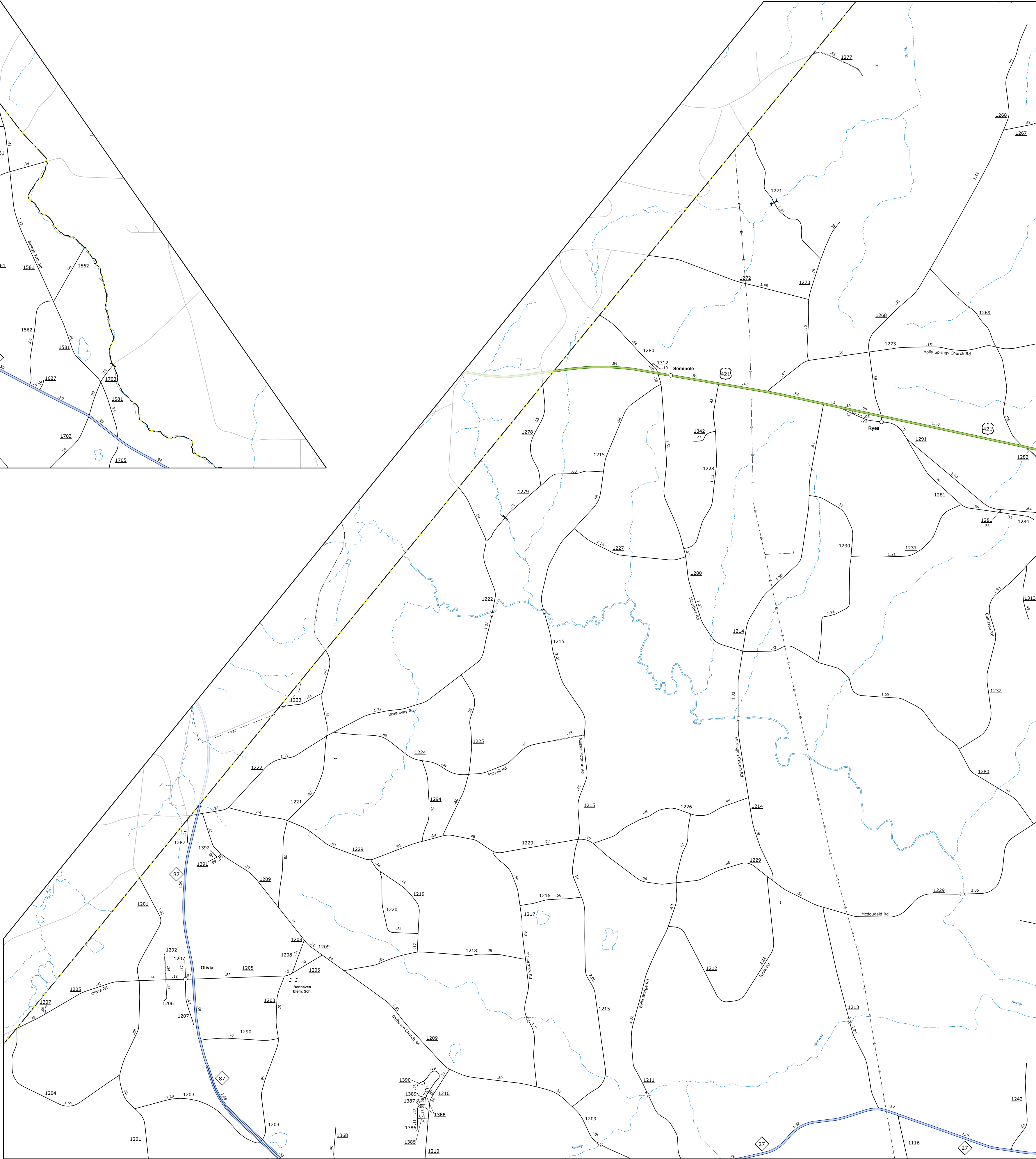
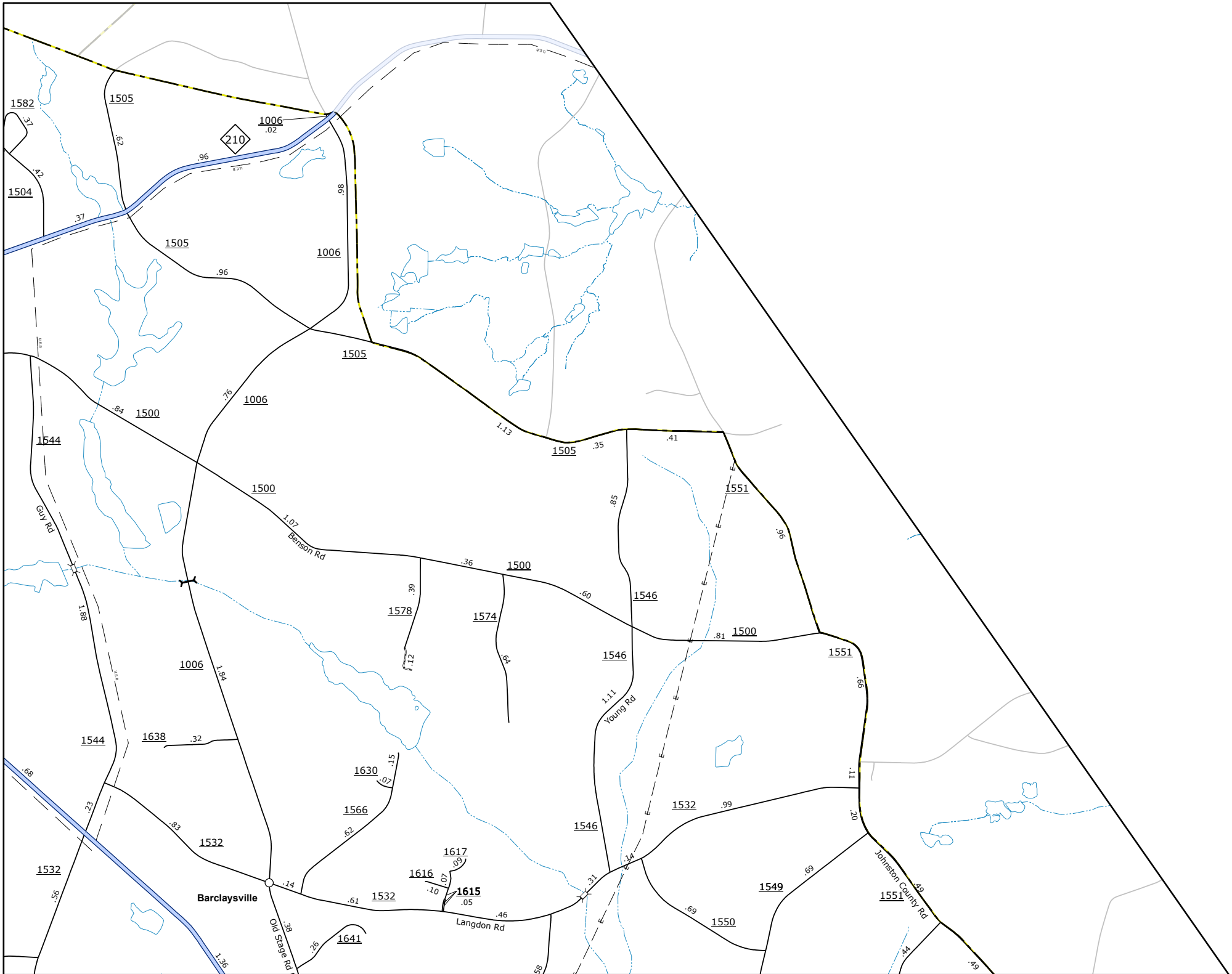
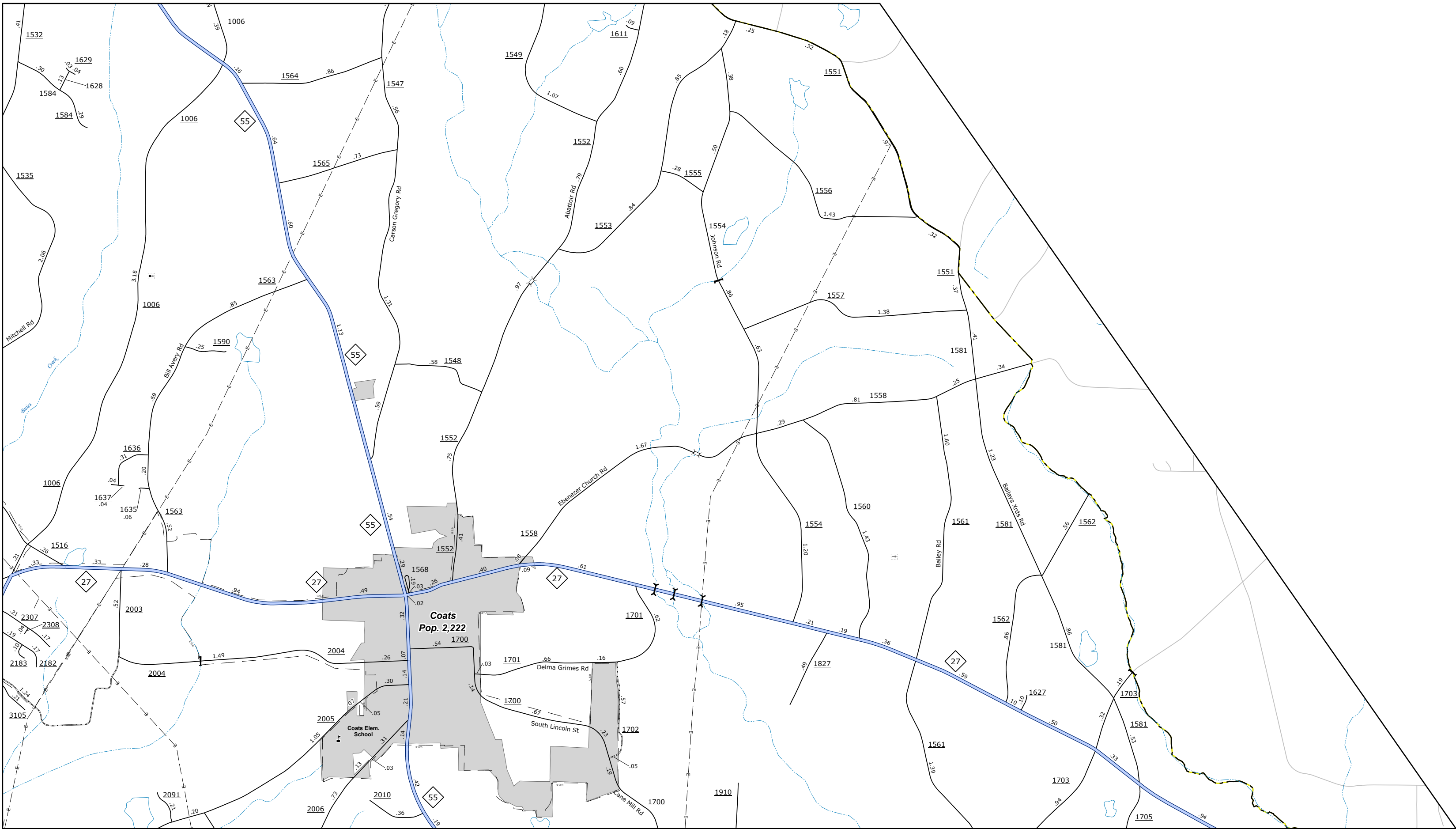


HARNETT COUNTY NORTH CAROLINA

PREPARED BY THE
NORTH CAROLINA DEPARTMENT OF TRANSPORTATION
OPERATIONS PROGRAM MANAGEMENT UNIT - MAPPING SECTION
IN COOPERATION WITH THE
U.S. DEPARTMENT OF TRANSPORTATION
FEDERAL HIGHWAY ADMINISTRATION
SCALE



NORTH CAROLINA PLANE COORDINATE SYSTEM
LAMBERT CONFORMAL CONIC PROJECTION



LEGEND

- INTERSTATE US NC
- BLUE RIDGE PARKWAY
- UNPAVED SURFACED ROAD
- HARD SURFACED ROAD
- NON-SYSTEM ROAD
- PROVISIONALLY DRAWN ROAD
- PROTECTED LOCATION
- INTERSECTION DISTANCE
- STANDARD ROAD BRIDGE
- RAIL ROAD BRIDGE
- DRAW SPAN OR BRIDGE
- PEDESTRIAN BRIDGE
- PEDESTRIAN WALKWAY
- VEHICULAR UNDERPASS
- TUNNEL
- CULVERT
- PIPE
- INTERSTATE HIGHWAY
- U.S. NUMBERED HIGHWAY
- N.C. NUMBERED HIGHWAY
- U.S. NUMBERED BICYCLE ROUTE
- N.C. NUMBERED BICYCLE ROUTE
- INTERSTATE INTERCHANGE NUMBER
- SECONDARY ROAD NUMBER
- UTILITY LINES
- RAILROAD LINE
- RAILROAD STATION
- INSET AREA
- STATE LINE
- COUNTY LINE
- SMOOTHED URBAN BOUNDARIES
- CITY LIMITS
- FERRY ROUTE AND RAMP
- NARROW CREEK OR STREAM
- WIDE RIVER OR CREEK
- RESERVOIR, POND OR LAKE W/ ISLAND
- DAM OR DAM WITH LOCK
- WATERFALL
- SWAMP
- COMMUNITY
- COUNTY SEAT
- SCHOOL
- COLLEGE OR UNIVERSITY
- HOSPITAL
- COAST GUARD STATION
- CHURCH
- CHURCH WITH CEMETERY
- CEMETERY
- PATROL STATION
- CORRECTION OR PENAL INSTITUTION
- QUARRY
- MAINT. OR PIT
- HIGHWAY GARAGE OR MAINT. YARD
- HIGHWAY DIV. OR DIST. OFFICE
- MILITARY POST
- WEIGH STATION
- FAIRGROUNDS
- HISTORICAL SITE
- POINTS OF INTEREST
- POST OFFICE
- STATE FOREST
- LIGHTHOUSE
- MOUNTAIN SUMMIT
- MOUNTAIN GAP
- OVERLOOK
- REST AREA
- VISITOR CTR. REST AREA
- WELCOME CTR. REST AREA
- AIRPORT
- MILITARY AIRPORT

NATIONAL / STATE FOREST BOUNDARY

WILDLIFE REFUGE

NATIONAL / STATE PARK BOUNDARY

GAME LANDS BOUNDARY

MILITARY RESERVATION BOUNDARY

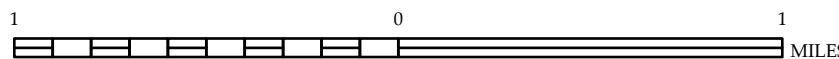
INDIAN RESERVATION BOUNDARY



HARNETT COUNTY
NORTH CAROLINA

PREPARED BY THE
NORTH CAROLINA DEPARTMENT OF TRANSPORTATION
OPERATIONS PROGRAM MANAGEMENT UNIT - MAPPING SECTION
IN COOPERATION WITH THE
U.S. DEPARTMENT OF TRANSPORTATION
FEDERAL HIGHWAY ADMINISTRATION

SCALE



NORTH CAROLINA PLANE COORDINATE SYSTEM
LAMBERT CONFORMAL CONIC PROJECTION

SHEET 6 of 6

COPIES OF THIS MAP ARE AVAILABLE TO THE
PUBLIC. FOR INFORMATION, CONTACT US TO ORDER:
HARNETT COUNTY, NORTH CAROLINA
1000 W. HARNETT AVENUE
HARNETT, NC 28530
704/285-1234

TERMS OF USE: The Mapping Section's goal is to provide the most accurate and current information possible. Map data is compiled from numerous sources with varying dates of publication and map accuracy standards. As a result, the accuracy, currency, and completeness of the data provided will vary. The North Carolina Department of Transportation shall not be held liable for any errors in the map data. This map cannot be construed to be a legal document. The information shown on this map was last updated in September 2024. For digital copies of this map or additional map products, visit <https://connect.ncdot.gov/resources/StateMapping>