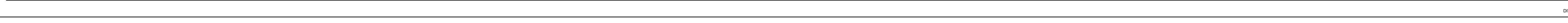


COPIES OF THIS MAP ARE AVAILABLE TO THE
PUBLIC AT NOMINAL COST. CONTACT US TO ORDER:
maporders@connecticut.gov
www.connecticut.gov/resources/State-Mapping/Pages/Ordering-Maps.aspx
(919) 834-6460

[illegible][illegible]

SCALE



COPIES OF THIS MAP ARE AVAILABLE TO THE
PUBLIC AT NOMINAL COST. CONTACT US TO ORDER:
maporders@connecticut.gov
www.connecticut.gov/resources/State-Mapping/Pages/Ordering-Maps.aspx
(919) 834-6460

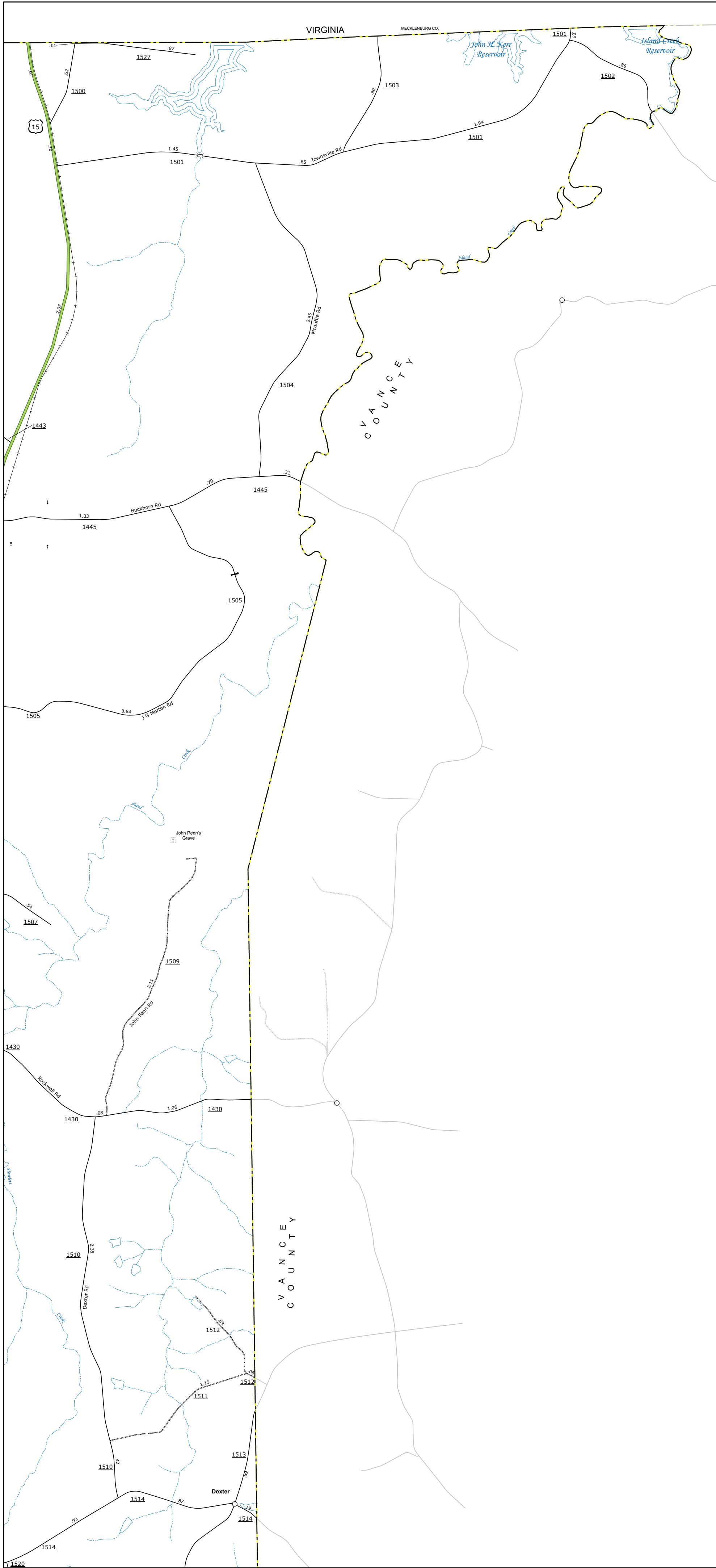


COPIES OF THIS MAP ARE AVAILABLE TO THE
PUBLIC AT NOMINAL COST. CONTACT US TO ORDER:
mapping@uspo.rinccdd.gov
<https://connect.norfolk.gov/resources/State-Mapping/Package>
(919) 834-8480

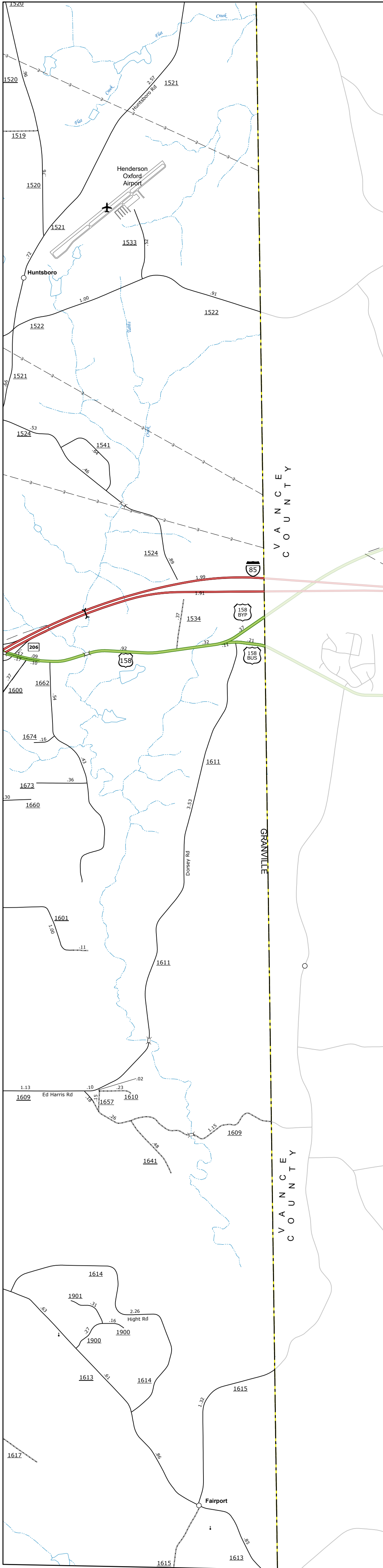


TERMS OF USE: The Mapping Section's goal is to provide the most accurate and current information possible. Map data is compiled from numerous sources with varying degrees of accuracy and map accuracy standards. As a result, the accuracy, currency, and completeness of the information shown on this map cannot be guaranteed. The information shown on this map was last updated in July 2024.

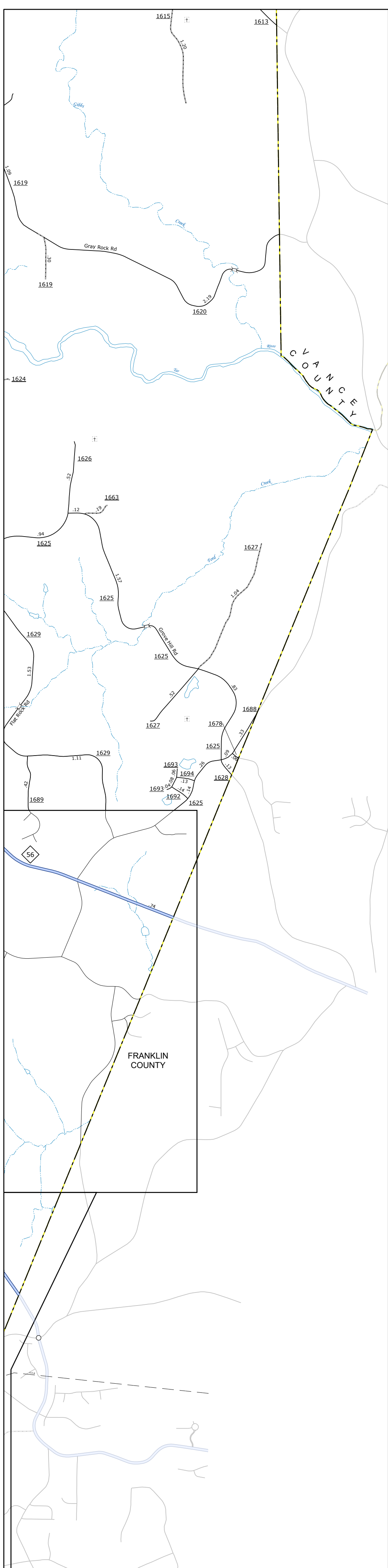
COPIES OF THIS MAP ARE AVAILABLE TO THE PUBLIC AT NO CHARGE. CONTACT US TO ORDER:
NORTH CAROLINA DEPARTMENT OF TRANSPORTATION
OPERATIONS PROGRAM MANAGEMENT UNIT - MAPPING SECTION
10101 LENOX DRIVE
Raleigh, NC 27617



A



B



C

Sheet Key

2

3

4

1

6

A

B

C

LEGEND

INTERSTATE

US

NC

Divided Hwy

Undivided Hwy

Blue Ridge Parkway

Unimproved Access Road

Hard Surfaced Road

Non-Surfaced Road

Provisionally Drained Road

Projected Location

Intersecting Road

Standard Road Bridge

Railroad Bridge

Draw Span on Bridge

Pedestrian Walkway

Pedestrian Underpass

Vehicle Underpass

Tunnel

Culvert

PPR

Interstate Highway

US Numbered Highway

NC Numbered Highway

US Numbered Bicycle Route

NC Numbered Bicycle Route

Interstate Interchange Number

Secondary Road Number

Utility Lines

Railroad Line

Point Area

State Line

County Line

City Limits

Ferry Route

Narrow Creek or Stream

Wide River or Creek

Reservoir, Pond or Lake w/ Island

Dam or Dam with Lock

Waterfall

Swamp

Community, Town or City Center

County Seat

School

College or University

Hospital

County Board Station

Church

Church with Cemetery

Cemetery

Patrol Station

Correctional or Penal Institution

Quarry

Min or Pit

Highway Garage or Maint Yard

Busway Stop or Post Office

Military Post

Work Station

Farmhouse

Historical Site

Points of Interest

State Forest

Lighthouse

Mountain Summit

Overlook

Rest Area

Visitor Center

Welcome Center

Airport

Military Airport

Helipad

National / State Forest Boundary

Wildlife Refuge

National / State Park Boundary

Game Lands Boundary

Military Reservation Boundary

Indian Reservation Boundary

N

0

0.5

1

MILES

NORTH CAROLINA PLANE COORDINATE SYSTEM

LAMBERT CONFORMAL CONIC PROJECTION

DIVISION 5

DISTRICT 2

GRANVILLE COUNTY

NORTH CAROLINA

FIPS 077

SHEET 5 of 6

TERMS OF USE: The Mapping Section's goal is to provide the most accurate and current information possible. Map data is compiled from numerous sources with varying degrees of accuracy and map accuracy standards. As a result, the accuracy, currency, and completeness of the information shown on this map cannot be guaranteed. The information shown on this map was last updated in July 2024. For more information, please contact the Mapping Section at 919-733-7000 or MappingSection@ncdot.gov.

COPIES OF THIS MAP ARE AVAILABLE TO THE PUBLIC AT NO CHARGE. CONTACT US TO ORDER: MappingSection@ncdot.gov or 919-733-7000. <https://www.ncdot.gov/Mapping/Products/Products.aspx>

