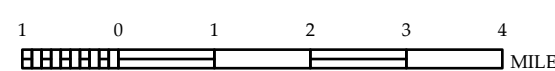
[illegible]

DAVIDSON COUNTY  
NORTH CAROLINA

PREPARED BY THE  
NORTH CAROLINA DEPARTMENT OF TRANSPORTATION  
OPERATIONS PROGRAM MANAGEMENT UNIT - MAPPING SECTION  
IN COOPERATION WITH THE  
U.S. DEPARTMENT OF TRANSPORTATION  
FEDERAL HIGHWAY ADMINISTRATION

SCAI



SCALE FOR ENLARGEMENTS

NORTH CAROLINA PLANE COORDINATE SYSTEM  
LAMBERT CONFORMAL CONIC PROJECTION

SHEET 1 OF 6

COPIES OF THIS MAP ARE AVAILABLE TO THE  
PUBLIC AT NOMINAL COST. CONTACT US TO ORDER:  
[mappingsupport@ncdot.gov](mailto:mappingsupport@ncdot.gov)  
<https://connect.ncdot.gov/resources/State-Mapping/Pages/Ordering-Maps.aspx>  
(919) 834-8480

**TERMS OF USE:** The Mapping Section's goal is to provide the most accurate and current information possible. Map data is compiled from numerous sources with varying dates of publication and map accuracy standards. As a result, the accuracy, currency, and completeness of the data provided will vary. The North Carolina Department of Transportation shall not be held liable for any errors in the map data. This map cannot be construed to be a legal document. The information shown on this map was last updated in September 2024. For digital copies of this map or additional map products, visit <https://connect.ncdot.gov/resources/State-Mapping>.

DIVISION 9    DISTRICT 1    **DAVIDSON COUNTY**    NORTH CAROLINA    FIPS 05





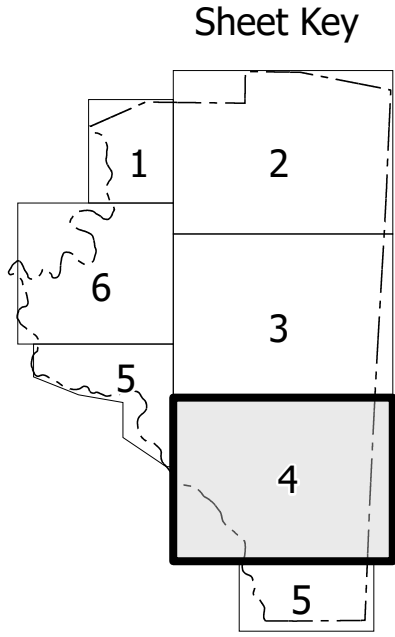






TERMS OF USE: The Mapping Section's goal is to provide the most accurate and current information possible. Map data is compiled from various sources including aerial photography, ground surveys, and other reliable sources. The Mapping Section does not warrant the accuracy or completeness of the information shown on this map. The information shown on this map was last updated in September 2024. For more information, please visit the website: <https://www.ncdot.gov/transportation/transportation-planning-and-design/mapping-section>

COPIES OF THIS MAP ARE AVAILABLE TO THE PUBLIC AT NO CHARGE. CONTACT US TO ORDER: [maps@ncdot.gov](mailto:maps@ncdot.gov) OR 1-800-368-3343

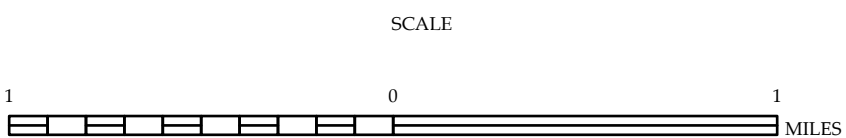


- LEGEND**
- INTERSTATE (US, NC, Divided Hwy, Undivided Hwy)
  - US HIGHWAY (Right of Way, Shoulder, Roadway, Hard Surface Road, Non-Steel Road, Potentially Driveway Road, Profile View Location, Intersection Location, Standard Road Bridge, Railroad Bridge, Draw Span (on Bridge), Pedestrian Bridge, Pedestrian Walkway, Pedestrian Underpass, Tunnel, Culvert, etc.)
  - INTERSTATE HIGHWAY (U.S. Numbered Highway, U.S. Numbered Highway, U.S. Numbered Bicycle Route, N.C. Numbered Bicycle Route, Interstate Right of Way Number, No Shoulder Road Number)
  - UTILITY LINES (Electric, Gas, Water, Sewer, Telephone, Cable, etc.)
  - RAILROAD LINE (Railroad Station, Post Office, State Line, County Line, Incorporated Urban Boundaries, City Limits)
  - FERRY ROUTE AND RAMP
  - NARROW CREEK OR STREAM
  - WIDE RIVER OR CREEK
  - HEADWATER, POND OR LAKE W/ ISLAND
  - DAM OR DAM WITH LOCK
  - WATERSHED
  - SWAMP
  - COMMUNITY (County Seat, Village, College or University, Hospital, Coast Guard Station, Church, Church with Cemetery, Cemetery, Post Office, Correction or Penal Institution, Quarry, Mine or Pit, Highway Garage or Maintenance Yard, Highway Dry or Dist. Office, Military Post, Weather Station, Fairgrounds, Historical Site, Points of Interest, Post Office, State Forest, Lighthouse, Mountain Summit, Mountain Gap, Overlook, Rest Area, Visitor Center Area, Welcome/Forest Area, Airport, Military Airport)
  - NATIONAL / STATE FOREST BOUNDARY
  - WILDLIFE REFUGE
  - NATIONAL / STATE PARK BOUNDARY
  - COAST LANDS BOUNDARY
  - MILITARY RESERVATION BOUNDARY
  - INDIAN RESERVATION BOUNDARY



## DAVIDSON COUNTY NORTH CAROLINA

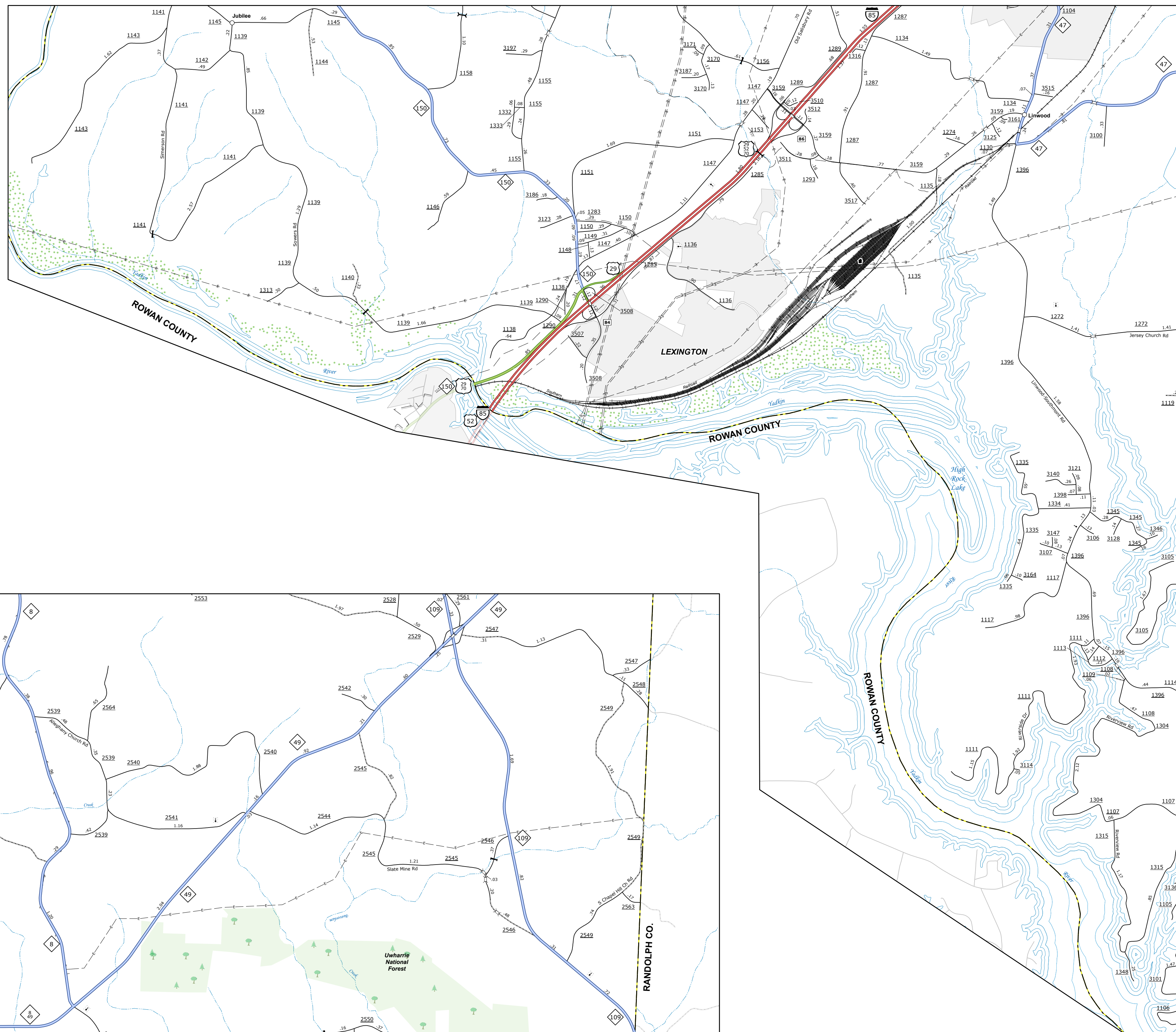
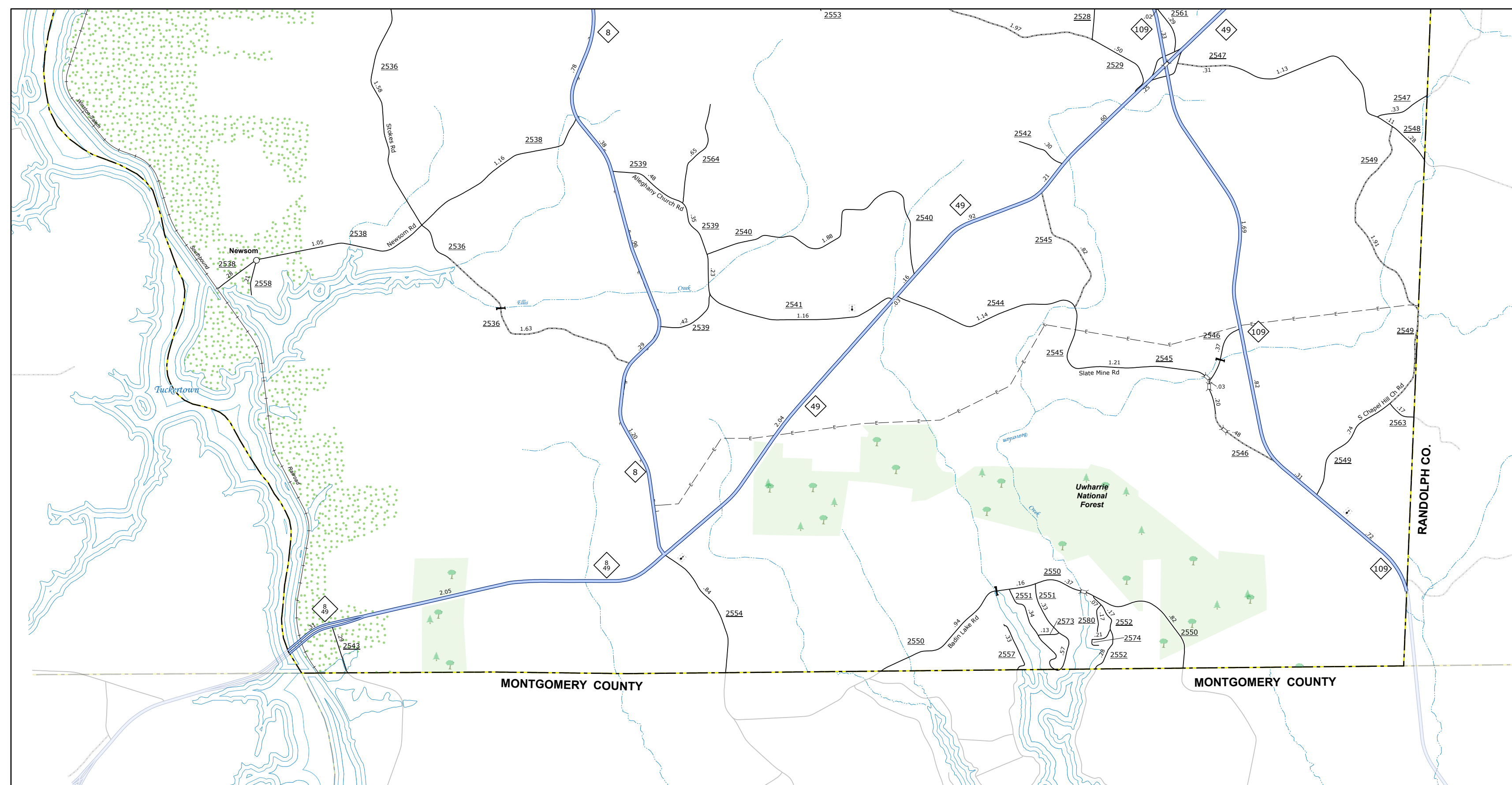
PREPARED BY THE  
NORTH CAROLINA DEPARTMENT OF TRANSPORTATION  
OPERATIONS PROGRAM MANAGEMENT UNIT - MAPPING SECTION  
IN COOPERATION WITH THE  
U.S. DEPARTMENT OF TRANSPORTATION  
FEDERAL HIGHWAY ADMINISTRATION



NORTH CAROLINA PLANE COORDINATE SYSTEM  
LAMBERT CONFORMAL CONIC PROJECTION

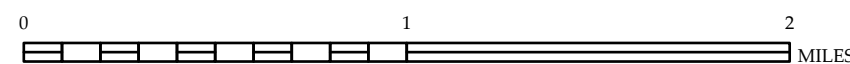


COPIES OF THIS MAP ARE AVAILABLE TO THE  
PUBLIC AT NOMINAL COST. CONTACT US TO ORDER:  
[mapings@connect.net](mailto:mapings@connect.net)  
<http://www.connect.net/resources/State-Mapping/Pages/Ordering-Maps.aspx>  
(919) 834-8480

[illegible]

PREPARED BY THE  
NORTH CAROLINA DEPARTMENT OF TRANSPORTATION  
OPERATIONS PROGRAM MANAGEMENT UNIT - MAPPING SECTION  
IN COOPERATION WITH THE  
U.S. DEPARTMENT OF TRANSPORTATION  
FEDERAL HIGHWAY ADMINISTRATION

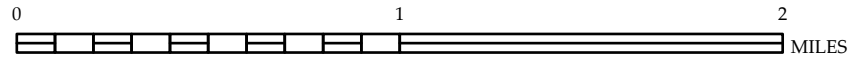
SCALE



NORTH CAROLINA PLANE COORDINATE SYSTEM  
LAMBERT CONFORMAL CONIC PROJECTION



COPIES OF THIS MAP ARE AVAILABLE TO THE  
PUBLIC AT NOMINAL COST. CONTACT US TO ORDER:  
[mapings@connect.net](mailto:mapings@connect.net)  
<http://www.connect.net/resources/State-Mapping/Pages/Ordering-Maps.aspx>  
(919) 834-8480



NORTH CAROLINA PLANE COORDINATE SYSTEM  
LAMBERT CONFORMAL CONIC PROJECTION