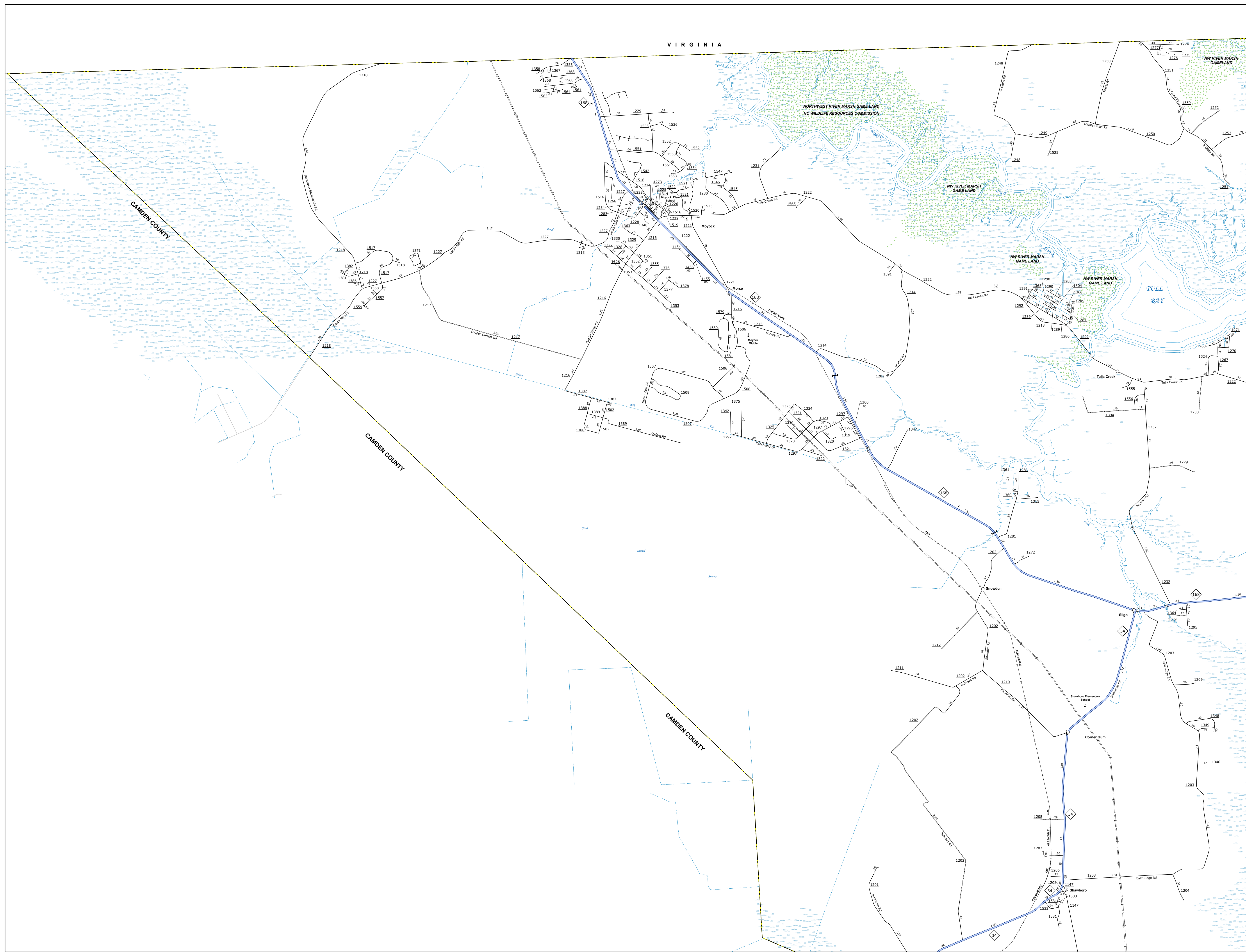


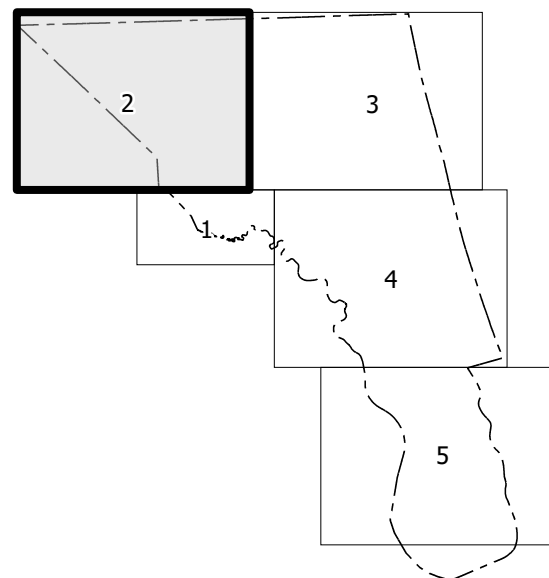




COPIES OF THIS MAP ARE AVAILABLE TO THE PUBLIC AT NOMINAL COST. CONTACT US TO ORDER.



## Sheet Key



### LEGEND

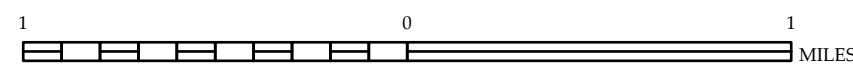
- [illegible]



**CURRITUCK COUNTY**  
**NORTH CAROLINA**

PREPARED BY THE  
NORTH CAROLINA DEPARTMENT OF TRANSPORTATION  
OPERATIONS PROGRAM MANAGEMENT UNIT - MAPPING SECTION  
IN COOPERATION WITH THE  
U.S. DEPARTMENT OF TRANSPORTATION  
FEDERAL HIGHWAY ADMINISTRATION

SCALE



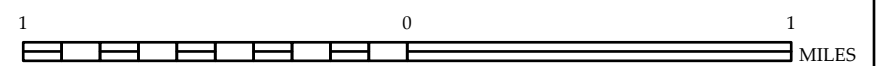
NORTH CAROLINA PLANE COORDINATE SYSTEM  
LAMBERT CONFORMAL CONIC PROJECTION



COPIES OF THIS MAP ARE AVAILABLE TO THE  
PUBLIC AT NOMINAL COST. CONTACT US TO ORDER:  
[mapingsupport@ncdot.gov](mailto:mapingsupport@ncdot.gov)  
<https://connect.ncdot.gov/resources/State-Mapping/Pages/Ordering-Maps.aspx>  
(919) 834-8480

[illegible]

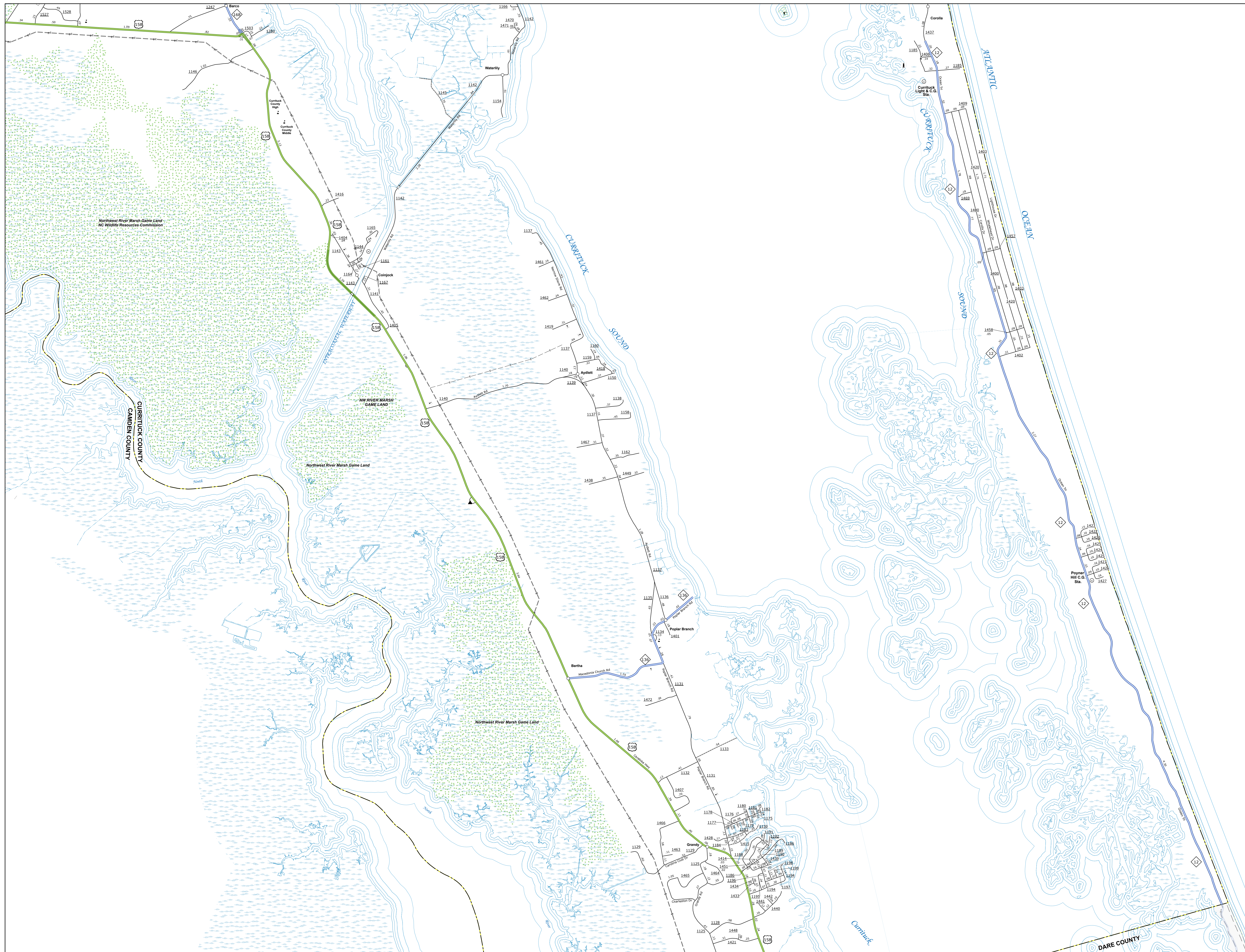
SCALE



NORTH CAROLINA PLANE COORDINATE SYSTEM  
LAMBERT CONFORMAL CONIC PROJECTION



COPIES OF THIS MAP ARE AVAILABLE TO THE  
PUBLIC AT NOMINAL COST. CONTACT US TO ORDER  
[mapinfo@support@ncdot.gov](mailto:mapinfo@support@ncdot.gov)  
<https://connect.ncdot.gov/resources/State-Mapping-Pages>  
(919) 834-8480

[illegible]

**CURRITUCK COUNTY**  
**NORTH CAROLINA**

PREPARED BY THE  
NORTH CAROLINA DEPARTMENT OF TRANSPORTATION  
OPERATIONS PROGRAM MANAGEMENT UNIT - MAPPING SECTION  
IN COOPERATION WITH THE  
U.S. DEPARTMENT OF TRANSPORTATION  
FEDERAL HIGHWAY ADMINISTRATION

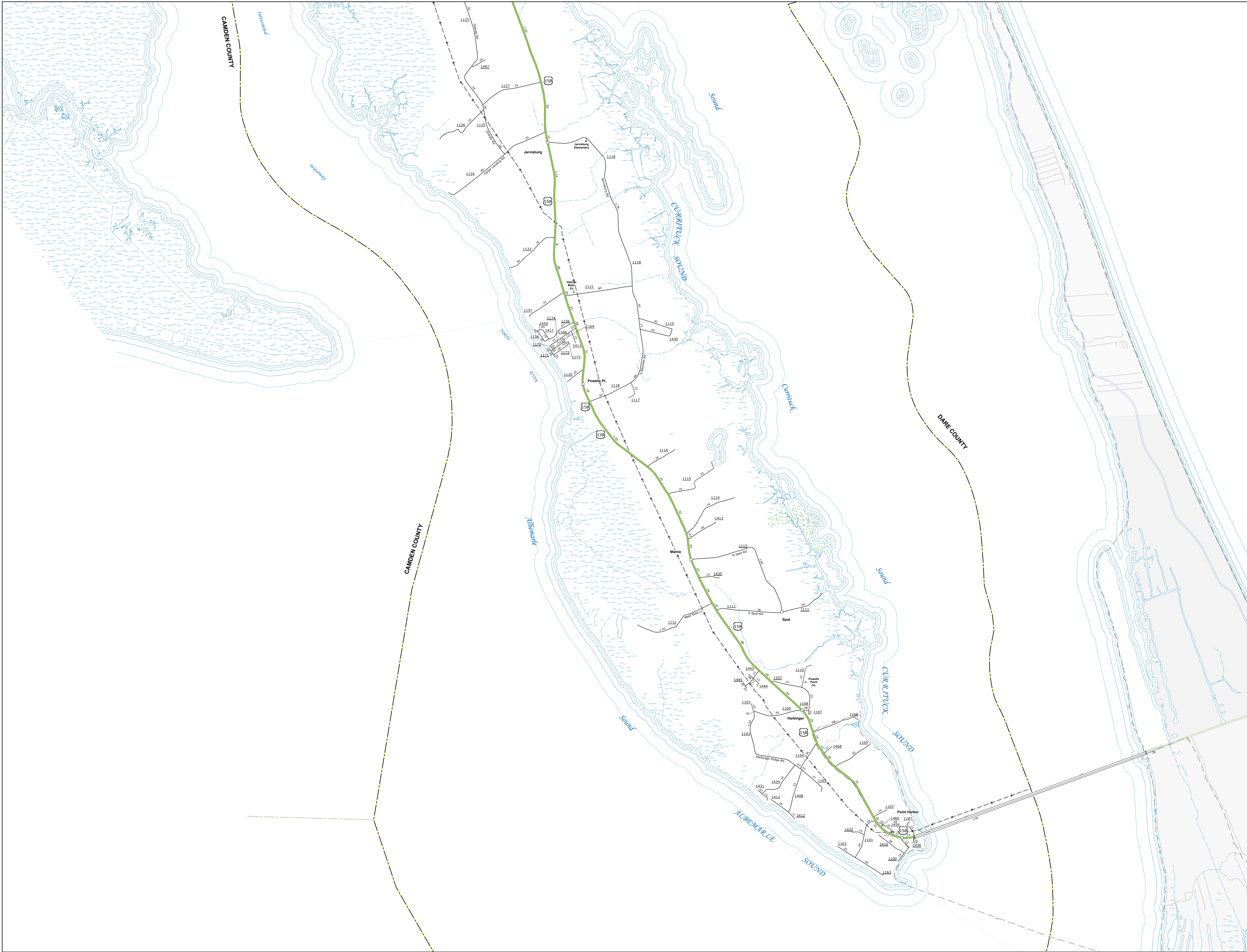
NORTH CAROLINA PLANE COORDINATE SYSTEM  
LAMBERT CONFORMAL CONIC PROJECTION

DIVISION 1    DISTRICT 1    CURRITUCK COUNTY    NORTH CAROLINA    FIPS 053

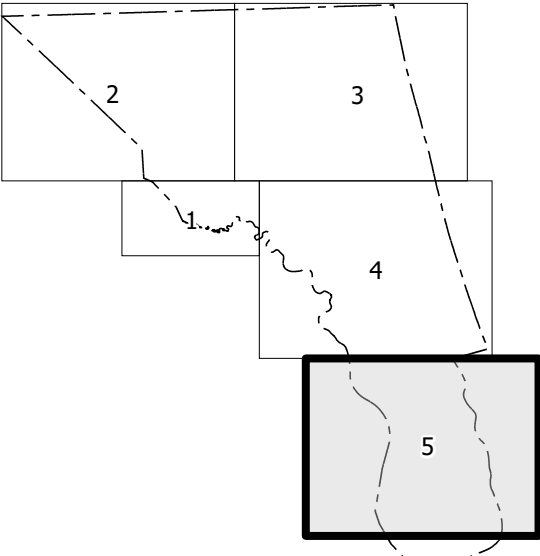


TERMS OF USE: The Mapping Section's goal is to provide the most accurate and current information possible. Map data is compiled from numerous sources with varying dates of publication and some accuracy standards. Also noted, the accuracy, currency and completeness of data cannot be guaranteed to be a legal document. This information shown on the map was last updated in September 2024. For digital copies of this map or additional map products, visit <https://www.ncdot.gov/transportation/transportation-planning/mapping/Products/Products.aspx>

COPIES OF THIS MAP ARE AVAILABLE TO THE PUBLIC UNDER THE OPEN DATA ACT. FOR MORE INFORMATION, VISIT <https://www.ncdot.gov/transportation/transportation-planning/mapping/Products/Products.aspx>

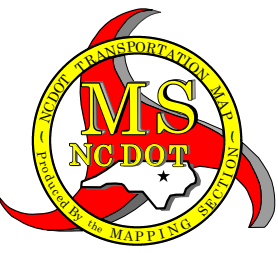


Sheet Key



LEGEND

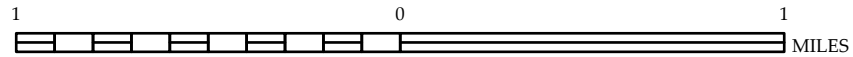
- INTERSTATE: US, NC, Divided Hwy, Undivided Hwy
- BLVD, PARKWAY, EMPLOYED SUBCATED ROAD, HARD SUBCATED ROAD, NON-EXISTENT ROAD, PROVISIONALLY DRAWN ROAD, PROPOSED ROAD, INTERSECTION DISTANCE, STANDARD ROAD BRIDGE, RAILROAD BRIDGE, DRAW SPAN ON BRIDGE, PEDESTRIAN BRIDGE, PEDESTRIAN WALKWAY, PEDESTRIAN UNDERPASS, VERTICAL CLEAR UNDERPASS, TUNNEL, CULVERT, PIPE
- INTERSTATE HIGHWAY, U.S. NUMBERED HIGHWAY, U.S. NUMBERED HIGHWAY, U.S. NUMBERED BICYCLE ROUTE, U.S. NUMBERED BICYCLE ROUTE, INTERSTATE INTERCHANGE NUMBER, SECONDARY ROAD NUMBER, CHURCH LINES, RAILROAD LINE, RAILROAD STATION, POST AREA, STATE LINE, COUNTY LINE, SANCTUARY BOUNDARIES, CITY LIMITS, FERRY ROUTE AND RAMP, NARROW CREEK OR STREAM, WIDE RIVER OR CREEK, RESERVOIR, POND OR LAKE W/ ISLAND, DAM OR DAM WITH LOCK, WATERFALL, SWAMP, COMMUNITY, COUNTY SEAT, SCHOOL, COLLEGE OR UNIVERSITY, POSTAL, COAST GUARD STATION, CHURCH, CHURCH WITH CEMETERY, CEMETERY, PATROL STATION, CORRECTION OR PENAL INSTITUTION, OF ARMY, MINES OR PET, HIGHWAY GARAGE OR MAINT. YARD, HIGHWAY DIV. OR DIST. OFFICE, MILITARY POST, WERGH STATION, FARMHOUSES, HISTORICAL SITE, POINTS OF INTEREST, POST OFFICE, STATE FOREST, OVERLOOK, MOUNTAIN SUMMIT, MOUNTAIN GAP, OVERLOOK, REST AREA, TRUCK OR TRUCK STOP AREA, WELCOME CENTER AREA, AIRPORT, MILITARY AIRPORT, NATIONAL / STATE FOREST BOUNDARY, WILDLIFE REFUGE, NATIONAL / STATE PARK BOUNDARY, GAME LANDS BOUNDARY, MILITARY RESERVATION BOUNDARY, INDIAN RESERVATION BOUNDARY



CURRITUCK COUNTY  
NORTH CAROLINA

PREPARED BY THE  
NORTH CAROLINA DEPARTMENT OF TRANSPORTATION  
OPERATIONS PROGRAM MANAGEMENT UNIT - MAPPING SECTION  
IN COOPERATION WITH THE  
U.S. DEPARTMENT OF TRANSPORTATION  
FEDERAL HIGHWAY ADMINISTRATION

SCALE



NORTH CAROLINA PLANE COORDINATE SYSTEM  
LAMBERT CONFORMAL CONIC PROJECTION