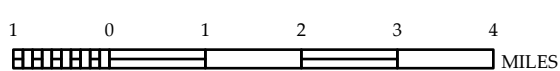


**CARTERET COUNTY**  
**NORTH CAROLINA**

PREPARED BY THE  
NORTH CAROLINA DEPARTMENT OF TRANSPORTATION  
OPERATIONS PROGRAM MANAGEMENT UNIT - MAPPING SECTION  
IN COOPERATION WITH THE  
U.S. DEPARTMENT OF TRANSPORTATION  
FEDERAL HIGHWAY ADMINISTRATION

SCALE



NORTH CAROLINA PLANE COORDINATE SYSTEM  
LAMBERT CONFORMAL CONIC PROJECTION

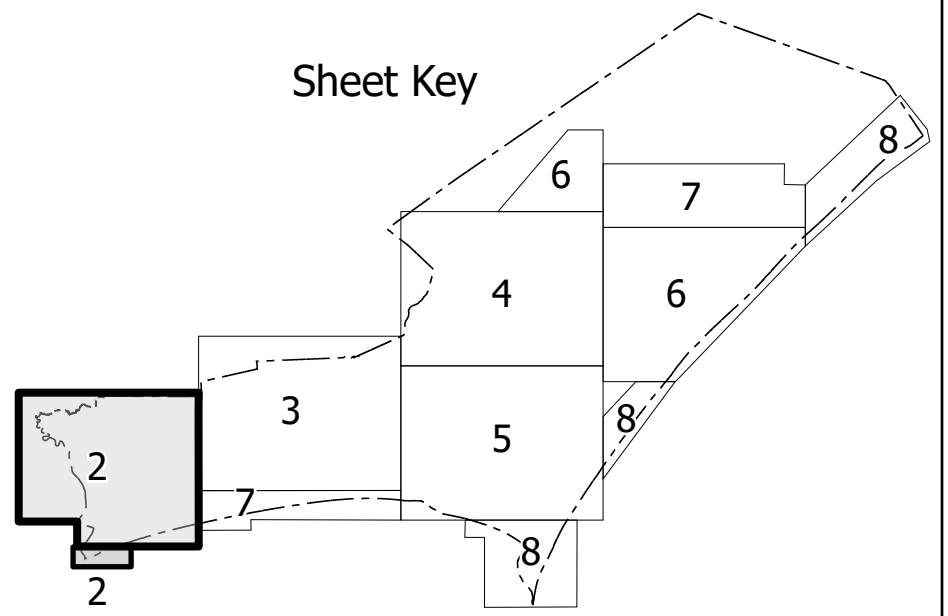
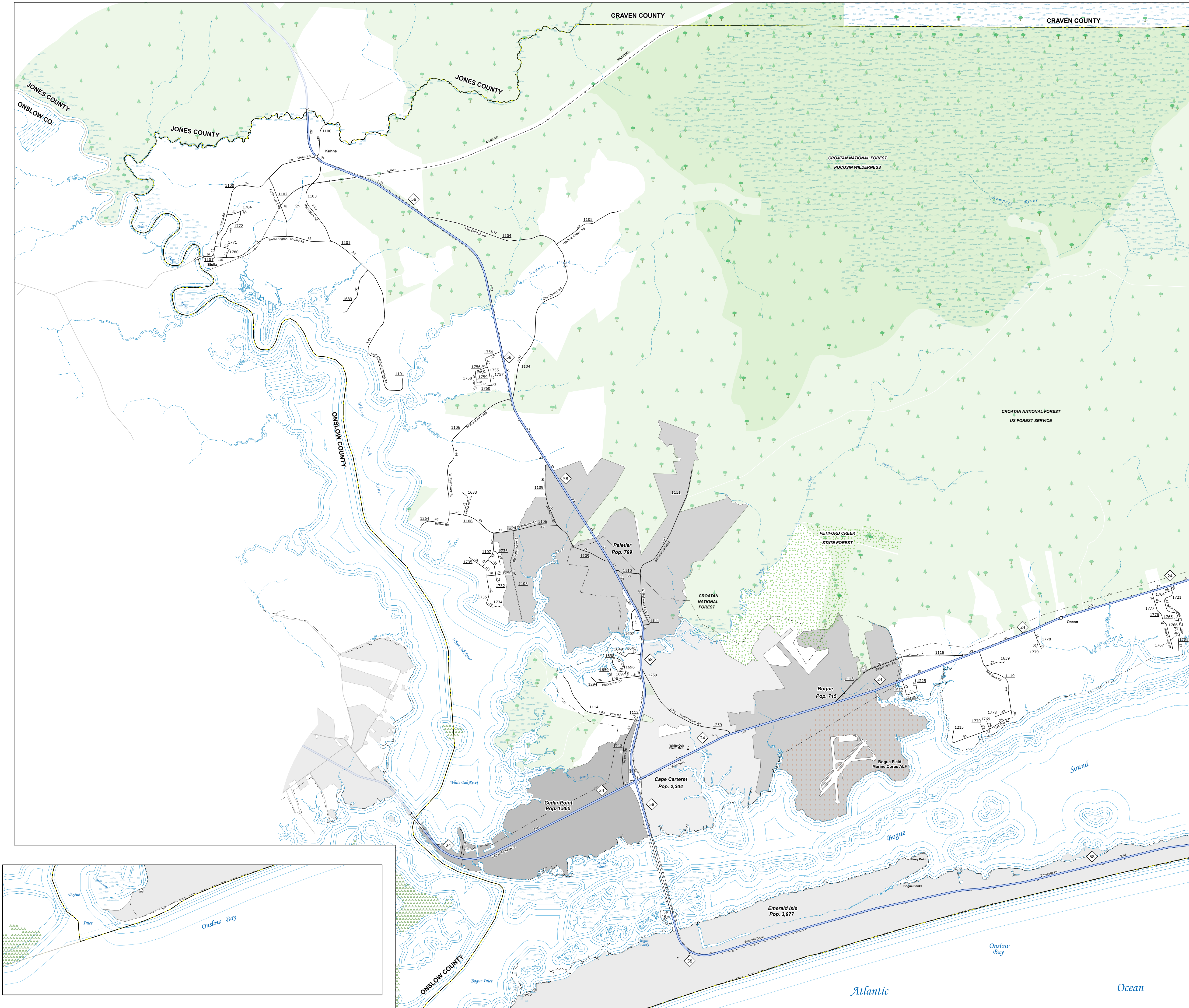
SHEET 1 OF 8

DIVISION 2    DISTRICT 2    CARTERET COUNTY    NORTH CAROLINA    FIPS 031



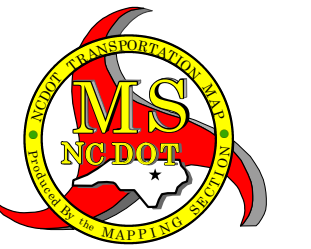
TRAFFIC USE: The Mapping Section is responsible for providing accurate information regarding the state's transportation system. The data is compiled from numerous sources with varying degrees of accuracy and is provided as a reference only. The accuracy of the data is not guaranteed. The information shown on this map was last updated in September 2024. For digital copies of this map or additional map products, visit <https://www.ncdot.gov/transportation/mapping/Products/Products.aspx>.

COPYRIGHT: THE MAP IS AVAILABLE FOR THE PUBLIC AT NO CHARGE. CONTACT US TO ORDER: [maps@ncdot.gov](mailto:maps@ncdot.gov) OR [919.961.6400](tel:9199616400).



#### LEGEND

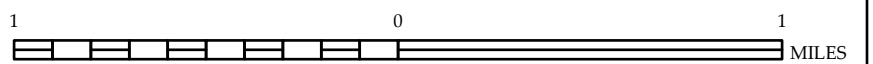
- INTERSTATE US NC Divided Hwy Undivided Hwy
- BLVD BRIDGE PARKWAY
- UNIMULATED RURAL ROAD
- HARD SURFCEAD ROAD
- WOODED STATE ROAD
- PROPOSEDLY TRAVEL ROAD
- PROJECTED OF OPEN
- INTERSTATE (TWO LANE)
- STANDARD ROAD BRIDGE
- RAILROAD BRIDGE
- DRY SPAN ON BRIDGE
- PEDESTRIAN BRIDGE
- PEDESTRIAN WALKWAY
- PEDESTRIAN UNDERPASS
- VEHICLE UNDERPASS
- TUNNEL
- CULVERT
- PPP
- INTERSTATE HIGHWAY
- US NUMBERED HIGHWAY
- NC NUMBERED HIGHWAY
- US NUMBERED BI-CYCLE ROUTE
- NC NUMBERED BI-CYCLE ROUTE
- INTERSTATE INTERCHANGE NUMBER
- SECONDARY ROAD NUMBER
- CHURCH LANE
- RAILROAD LINE
- RAILROAD STATION
- PORT AREA
- STATE LINE
- COUNTY LINE
- CITY LIMITS
- SHORTLY TRAILER BOUNDARY
- FERRY ROUTE AND RAMP
- SHORELINE CREEK OR STREAM
- WIDE RIVER OR CREEK
- RESERVOIR, POND OR LAKE W/ INLAND
- DAM OR DAM WITH LOCK
- WATERFALL
- SWAMP
- COMMUNITY
- COUNTY SEAT
- SCHOOL
- COLLEGE OR UNIVERSITY
- COAST GUARD STATION
- CHURCH
- CHURCH WITH CEMETERY
- CEMETERY
- PUBLIC STATION
- CORRECTION OR PENAL INSTITUTION
- QUARRY
- MINE OR PIT
- INDUSTRIAL GARAGE OR MAINT. YARD
- HIGHWAY DIV. OR DIST. OFFICE
- MILITARY POST
- WATER STATION
- FARMHOUSE
- HISTORICAL SITE
- POINTS OF INTEREST
- POST OFFICE
- STATE FOREST
- LIGHTHOUSE
- MOUNTAIN SUMMIT
- OVERLOOK
- REST AREA
- VISITOR CTR. REST AREA
- WELCOME CTR. REST AREA
- AIRPORT
- MILITARY AIRPORT
- NATIONAL STATE FOREST BOUNDARY
- WILDLIFE REFUGE
- NATIONAL STATE PARK BOUNDARY
- GAME LANDS BOUNDARY
- MILITARY RESERVATION BOUNDARY
- INDIAN RESERVATION BOUNDARY



## CARTERET COUNTY NORTH CAROLINA

PREPARED BY THE  
NORTH CAROLINA DEPARTMENT OF TRANSPORTATION  
OPERATIONS PROGRAM MANAGEMENT UNIT - MAPPING SECTION  
IN COOPERATION WITH THE  
U.S. DEPARTMENT OF TRANSPORTATION  
FEDERAL HIGHWAY ADMINISTRATION

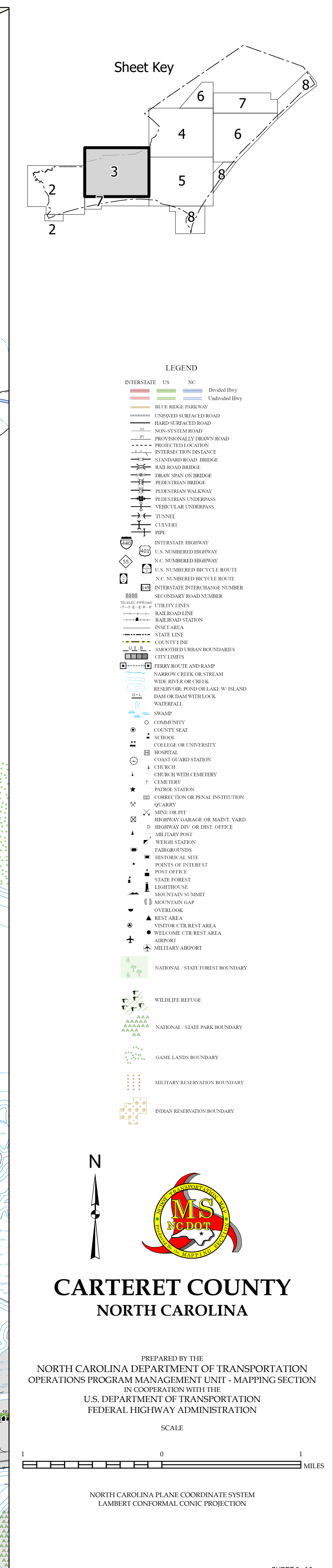
SCALE



NORTH CAROLINA PLANE COORDINATE SYSTEM  
LAMBERT CONFORMAL CONIC PROJECTION



(919) 834-8480





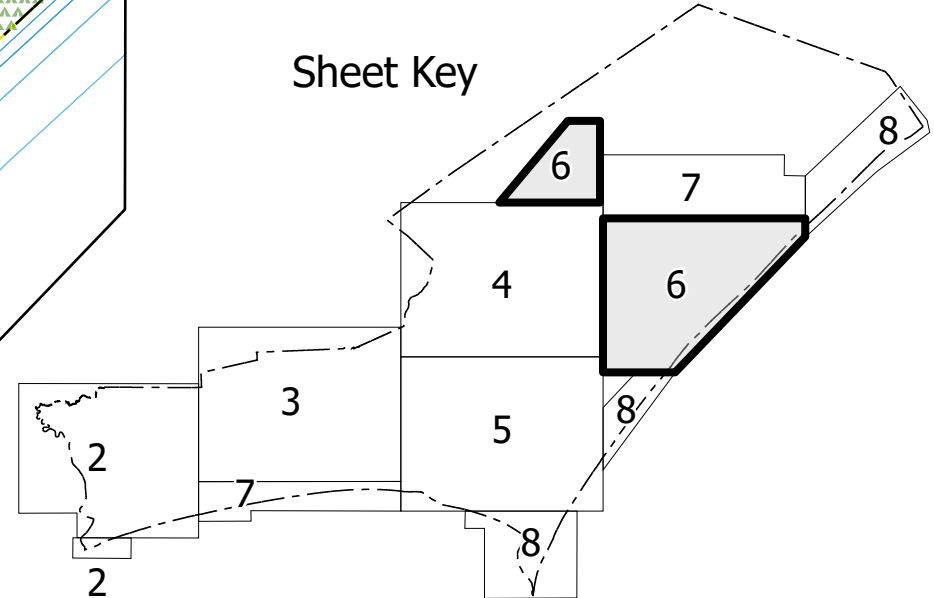








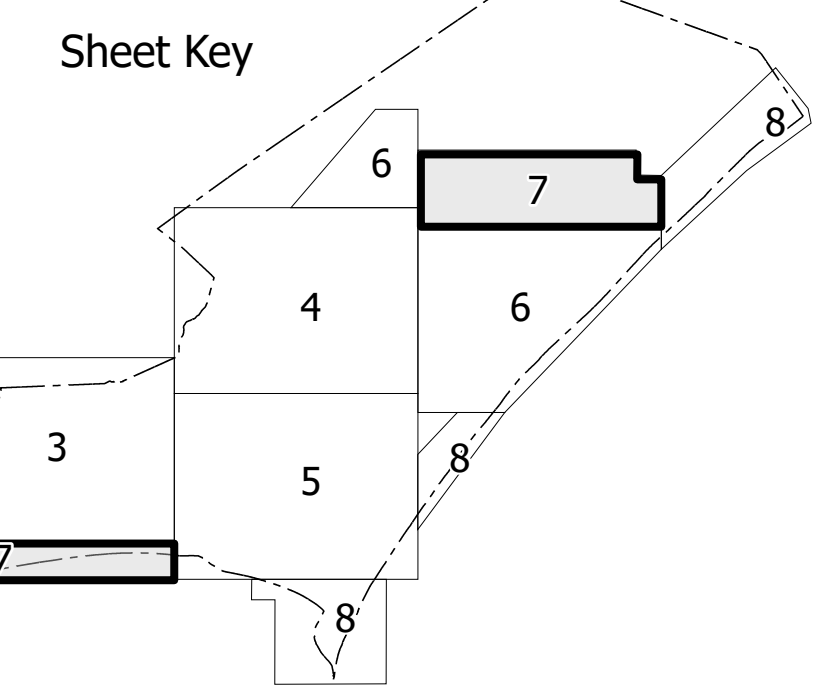
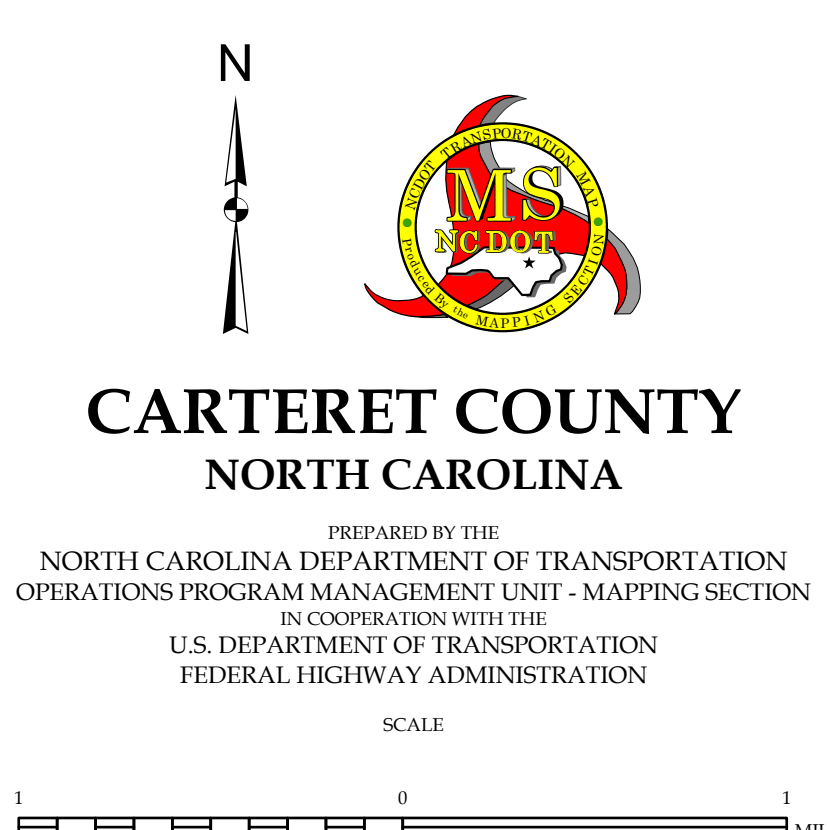
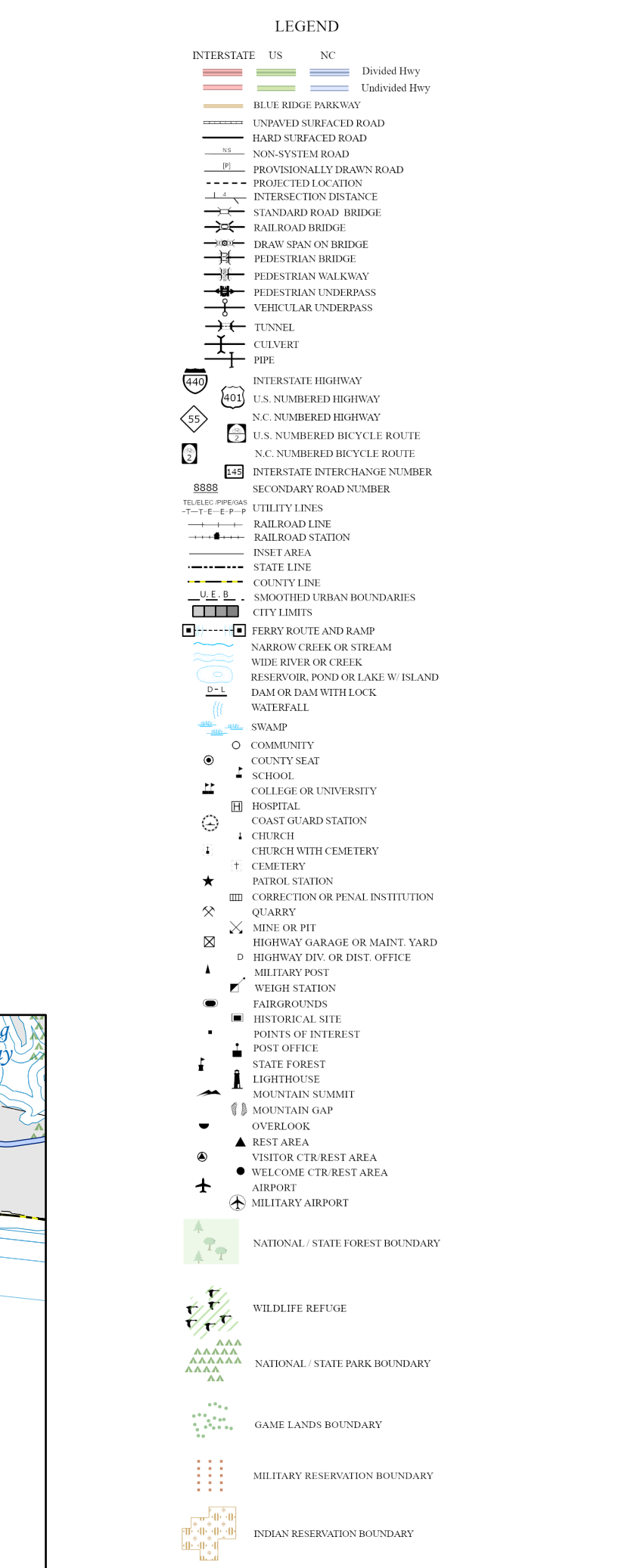
COPIES OF THIS MAP ARE AVAILABLE TO THE  
PUBLIC AT NOMINAL COST. CONTACT US TO ORDER:  
mapping.support@ncdot.gov  
<https://connect.ncdot.gov/resources/State-Mapping/Pages/Ordering-Maps.aspx>  
(919) 834-8480

[illegible]

NORTH CAROLINA PLANE COORDINATE SYSTEM  
LAMBERT CONFORMAL CONIC PROJECTION



**First Choice** is the only national health insurance plan that can be used to pay for all your health care needs, including hospital care, doctor visits, prescriptions, dental, vision, and more. It's the only plan that can be used to pay for all your health care needs, including hospital care, doctor visits, prescriptions, dental, vision, and more.

 $\text{cov}(\mathbf{y}_i, \mathbf{y}_j) = \mathbf{C}_i \mathbf{C}_j^T$ 

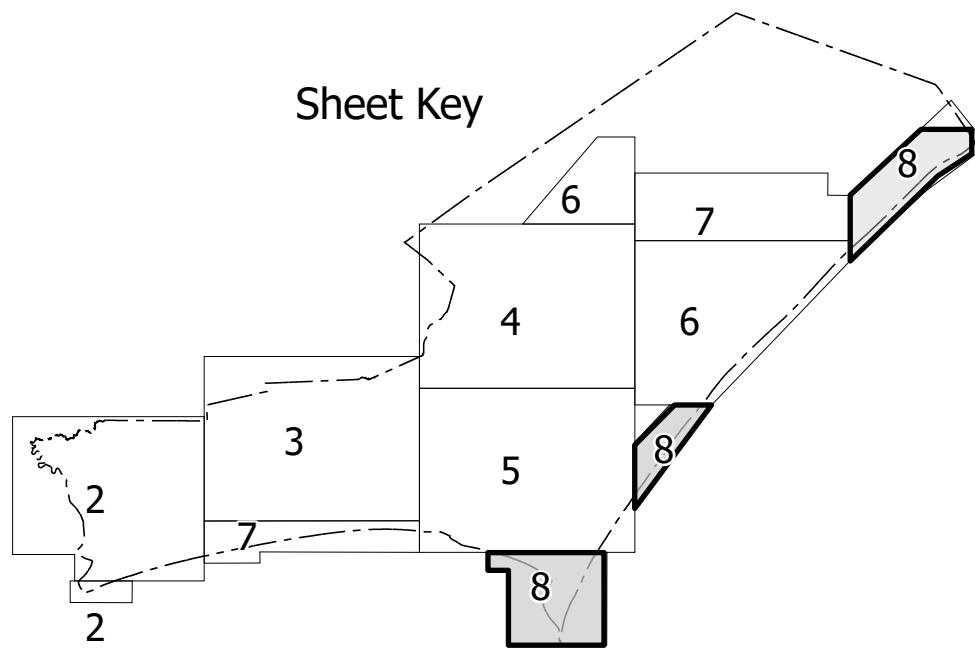
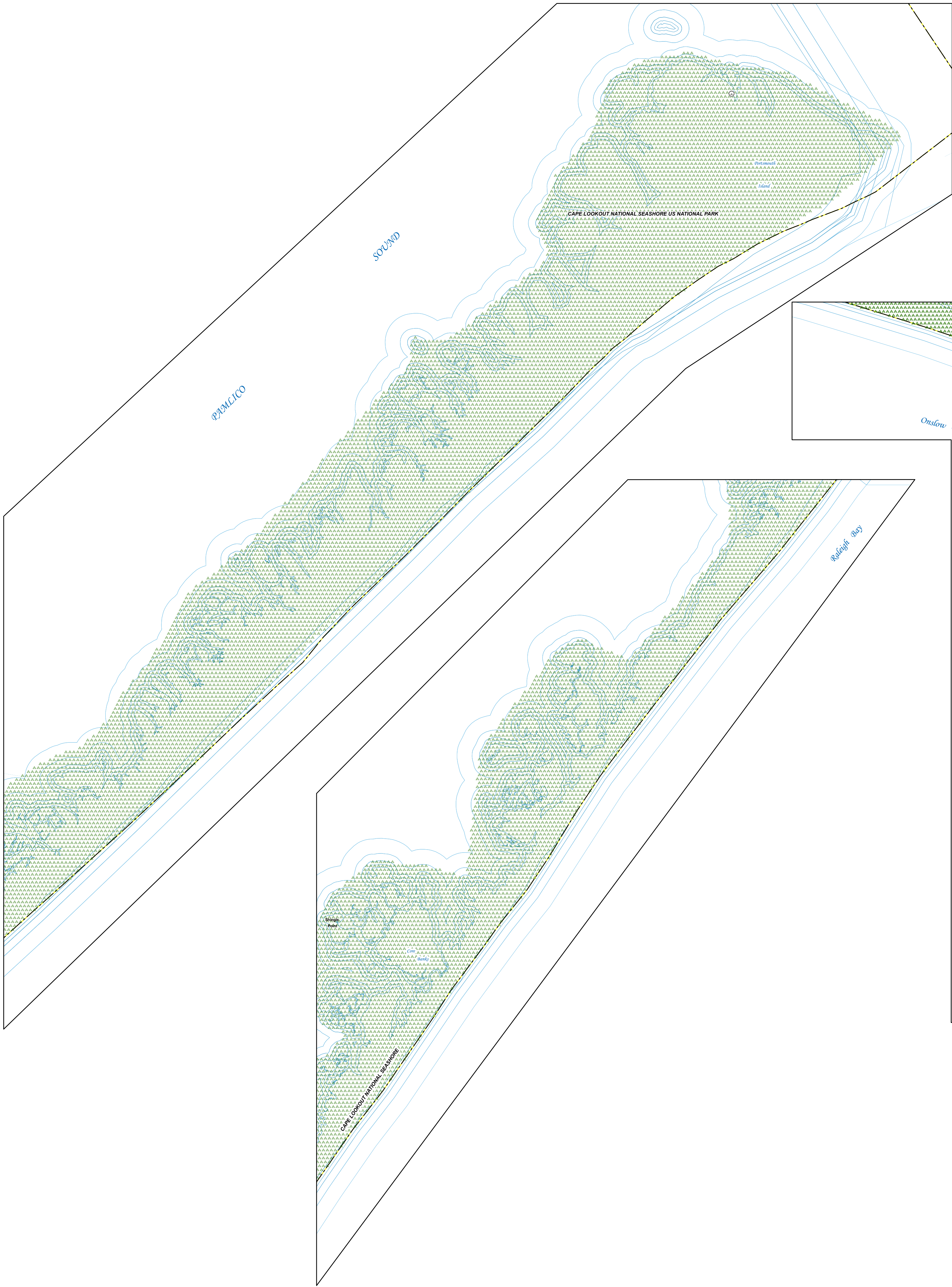
PREPARED BY THE  
NORTH CAROLINA DEPARTMENT OF TRANSPORTATION  
OPERATIONS PROGRAM MANAGEMENT UNIT - MAPPING SECTION  
IN COOPERATION WITH THE  
U.S. DEPARTMENT OF TRANSPORTATION  
FEDERAL HIGHWAY ADMINISTRATION

NORTH CAROLINA PLANE COORDINATE SYSTEM  
LAMBERT CONFORMAL CONIC PROJECTION

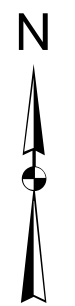


TERMS OF USE: The Mapping Section is not responsible for any errors or omissions in the data. The data is compiled from numerous sources with varying levels of accuracy and is provided as a reference only. The accuracy, completeness, and timeliness of the data is not guaranteed. The information shown on this map was last updated in September 2024. For digital copies of the map or additional map products, visit <https://www.ncdot.gov/transportation/transportation-planning/transportation-planning.aspx>.

COPYRIGHT: THE MATERIALS ARE THE PROPERTY OF THE NORTH CAROLINA DEPARTMENT OF TRANSPORTATION. NO PART OF THIS PUBLICATION MAY BE REPRODUCED OR TRANSMITTED IN ANY FORM OR BY ANY MEANS, ELECTRONIC OR MECHANICAL, WITHOUT PERMISSION IN WRITING FROM THE NORTH CAROLINA DEPARTMENT OF TRANSPORTATION. (11/11) 13-1-14-100



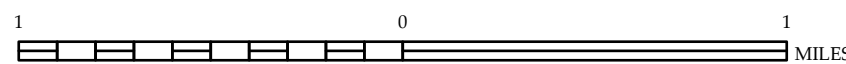
- LEGEND
- INTERSTATE US NC Divided Dwy Undivided Dwy
  - BLVD BRIDGE PARKWAY
  - UNIMPAVED DRIVEWAY ROAD
  - HARD SURFCEAD ROAD
  - NON-SURFCEAD ROAD
  - PROPOSEDLY TRAVEL ROAD
  - PROPOSEDLY OPEN
  - INTERESTED RESIDENT
  - STANDARD ROAD BRIDGE
  - RAILROAD BRIDGE
  - CRAY SPAN ON BRIDGE
  - PEDESTRIAN BRIDGE
  - PEDESTRIAN WALKWAY
  - PEDESTRIAN UNDERPASS
  - VEHICLE UNDERPASS
  - TUNNEL
  - CUTWAY
  - PPP
  - INTERSTATE HIGHWAY
  - US NUMBERED HIGHWAY
  - NC NUMBERED HIGHWAY
  - US NUMBERED BICYCLE ROUTE
  - NC NUMBERED BICYCLE ROUTE
  - INTERSTATE INTERCHANGE NUMBER
  - SECONDARY ROAD NUMBER
  - RAILROAD LINE
  - RAILROAD STATION
  - POST OFFICE
  - STATE LINE
  - COUNTY LINE
  - CITY LIMITS
  - FERRY ROUTE AND RAMP
  - NARROW CREEK OR STREAM
  - WIDE RIVER OR CREEK
  - RESERVOIR, POND OR LAKE W/ ISLAND
  - DAM OR DAM WITH LOCK
  - WATERFALL
  - SWAMP
  - COMMUNITY
  - COUNTY SEAT
  - SCHOOL
  - COLLEGE OR UNIVERSITY
  - COAST GUARD STATION
  - CHURCH
  - CEMETERY WITH CEMETERY
  - CEMETERY
  - PUBLIC STATION
  - CORRECTION OR PENAL INSTITUTION
  - QUARRY
  - MINE OR PIT
  - INDUSTRIAL GARAGE OR MAINT YARD
  - HIGHWAY DIV. OR DIST. OFFICE
  - MILITARY POST
  - WATER STATION
  - FARMHOUSE
  - HISTORICAL SITE
  - POINTS OF INTEREST
  - POST OFFICE
  - STATE FOREST
  - LIGHTHOUSE
  - MOUNTAIN SUMMIT
  - MOUNTAIN GAP
  - OVERLOOK
  - REST AREA
  - VISITOR CENTER AREA
  - WELCOME CENTER AREA
  - AMPHITHEATRE
  - MILITARY AIRPORT
  - NATIONAL STATE FOREST BOUNDARY
  - WILDLIFE REFUGE
  - NATIONAL STATE PARK BOUNDARY
  - GAME LANDS BOUNDARY
  - MILITARY RESERVATION BOUNDARY
  - INDIAN RESERVATION BOUNDARY



## CARTERET COUNTY NORTH CAROLINA

PREPARED BY THE  
NORTH CAROLINA DEPARTMENT OF TRANSPORTATION  
OPERATIONS PROGRAM MANAGEMENT UNIT - MAPPING SECTION  
IN COOPERATION WITH THE  
U.S. DEPARTMENT OF TRANSPORTATION  
FEDERAL HIGHWAY ADMINISTRATION

SCALE



NORTH CAROLINA PLANE COORDINATE SYSTEM  
LAMBERT CONFORMAL CONIC PROJECTION