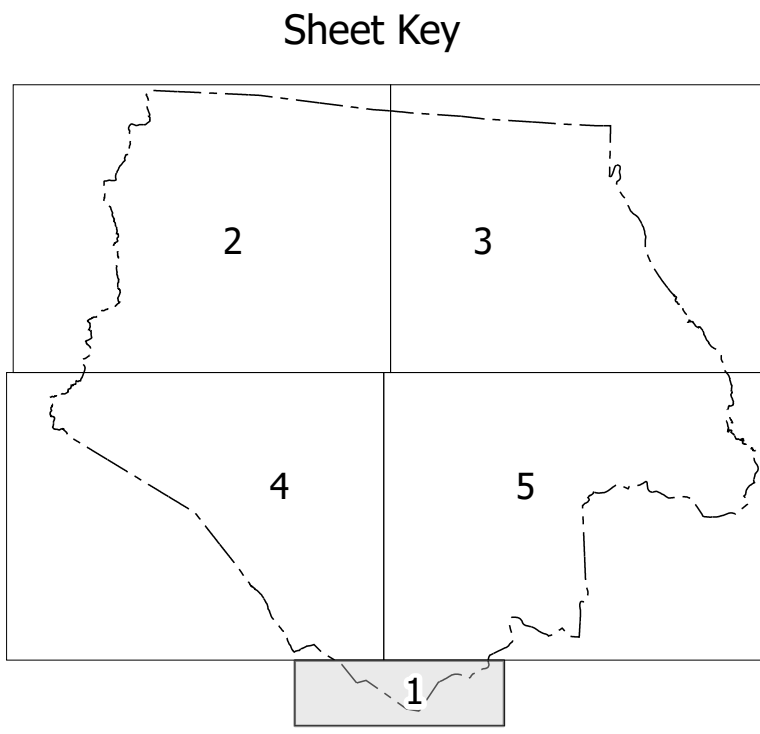
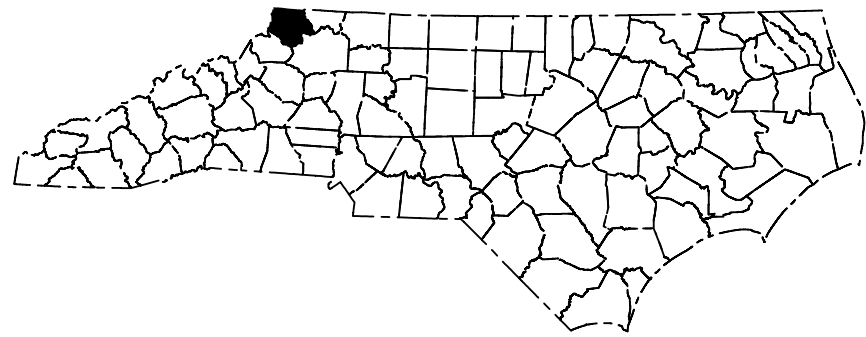
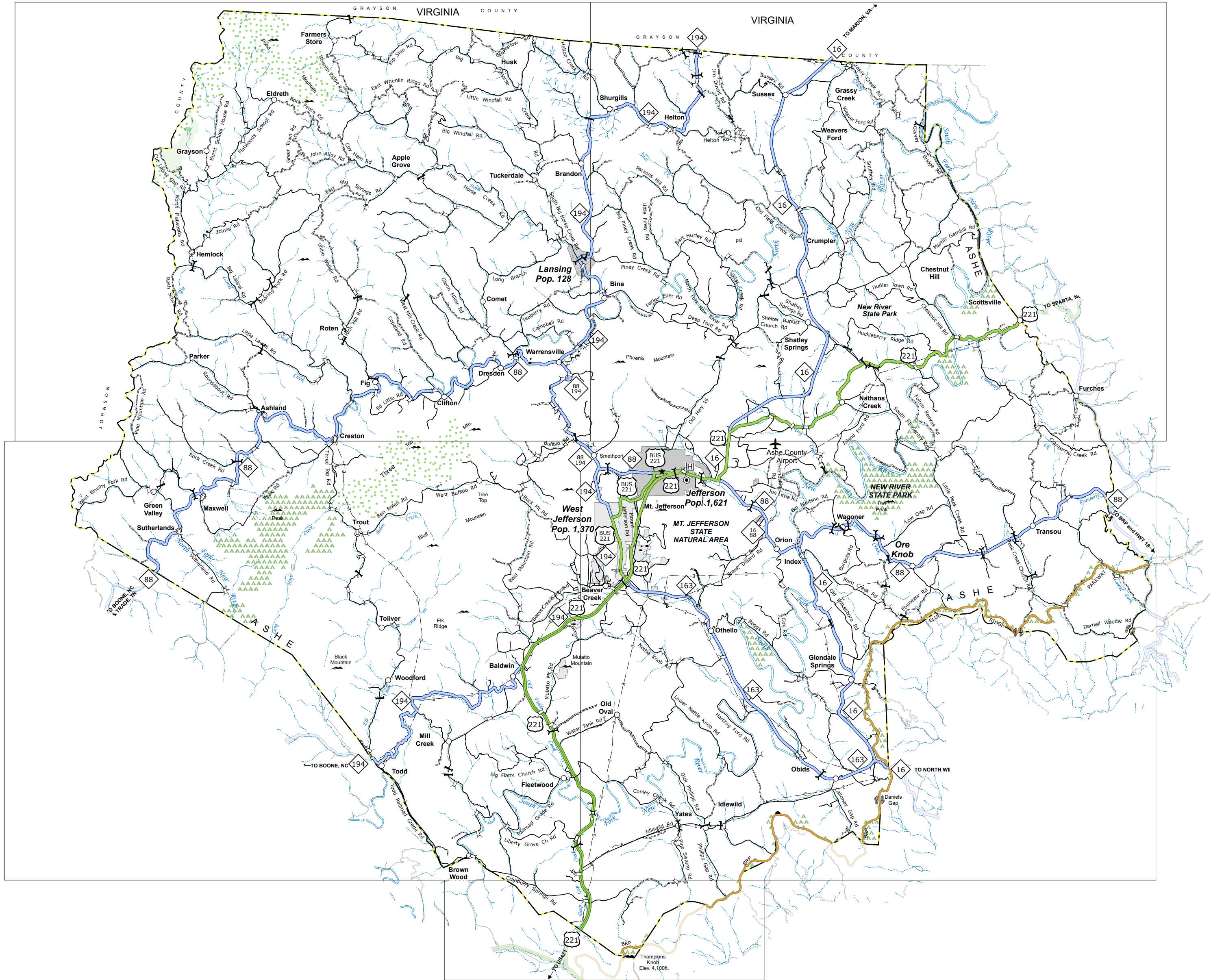
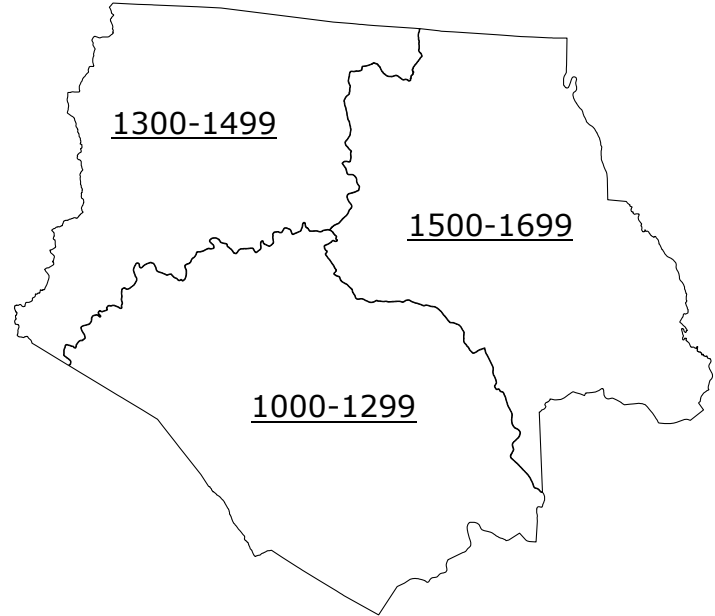
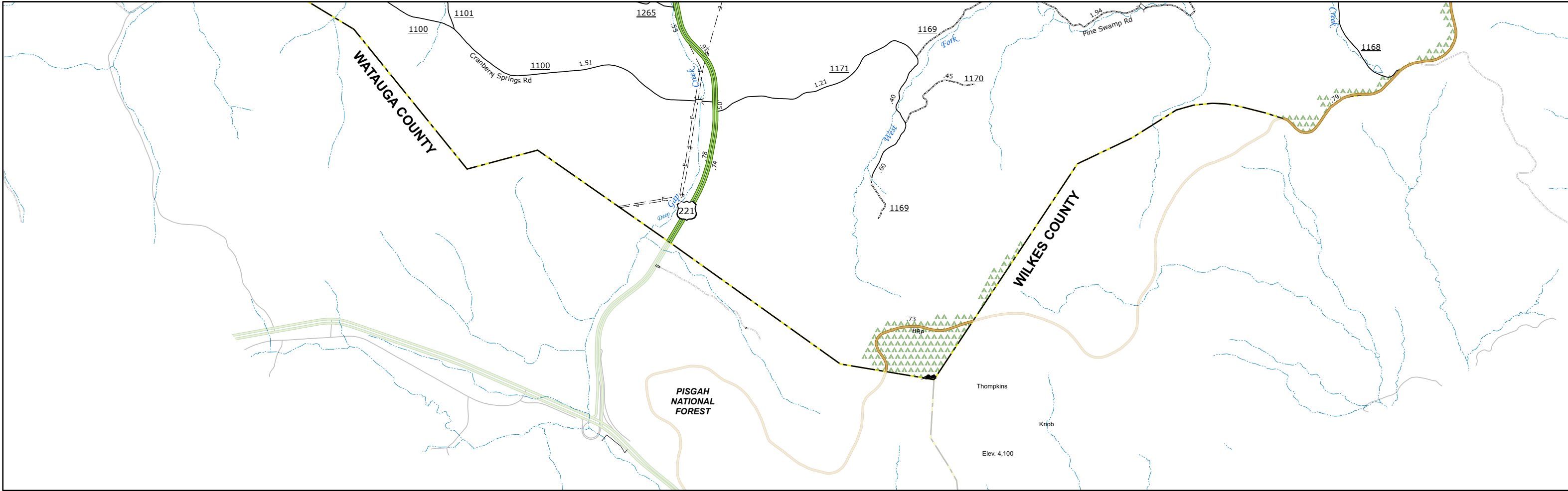
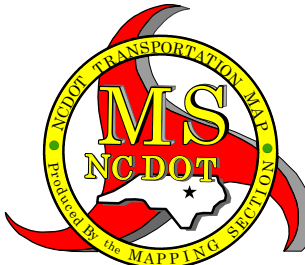


Copyright © 2012, North Carolina Department of Transportation. All rights reserved. This map is a reproduction of the original map and is not to be used for any other purpose. The accuracy, currency, and completeness of the information contained herein are not guaranteed. The user assumes all responsibility for any errors or omissions. This map is a reproduction of the original map and is not to be used for any other purpose. The accuracy, currency, and completeness of the information contained herein are not guaranteed. The user assumes all responsibility for any errors or omissions. This map is a reproduction of the original map and is not to be used for any other purpose. The accuracy, currency, and completeness of the information contained herein are not guaranteed. The user assumes all responsibility for any errors or omissions.

Copyright © 2012, North Carolina Department of Transportation. All rights reserved. This map is a reproduction of the original map and is not to be used for any other purpose. The accuracy, currency, and completeness of the information contained herein are not guaranteed. The user assumes all responsibility for any errors or omissions. This map is a reproduction of the original map and is not to be used for any other purpose. The accuracy, currency, and completeness of the information contained herein are not guaranteed. The user assumes all responsibility for any errors or omissions.

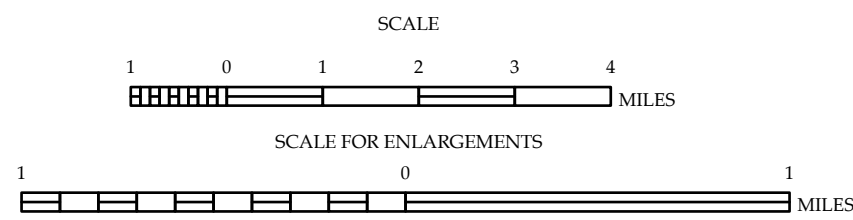


- LEGEND**
- INTERSTATE US NC
 - Divided Hwy
 - Undivided Hwy
 - BLUE RIDGE PARKWAY
 - UNPAVED SURFACED ROAD
 - HARD SURFACED ROAD
 - NON-SYSTEM ROAD
 - PROVISIONALLY DRAWN ROAD
 - PROJECTED LOCATION
 - INTERSECTION DISTANCE
 - INTERSTATE HIGHWAY
 - U.S. NUMBERED HIGHWAY
 - N.C. NUMBERED HIGHWAY
 - U.S. NUMBERED BICYCLE ROUTE
 - N.C. NUMBERED BICYCLE ROUTE
 - INTERSTATE INTERCHANGE NUMBER
 - SECONDARY ROAD NUMBER
 - 8888
 - UTILITY LINES
 - RAILROAD LINE
 - RAILROAD STATION
 - INSET AREA
 - STATE LINE
 - COUNTY LINE
 - SMOOTHED URBAN BOUNDARIES
 - CITY LIMITS
 - FERRY ROUTE AND RAMP
 - NARROW CREEK OR STREAM
 - WIDE RIVER OR CREEK
 - RESERVOIR, POND OR LAKE W/ ISLAND
 - DAM OR DAM WITH LOCK
 - WATERFALL
 - SWAMP
 - COMMUNITY
 - COUNTY SEAT
 - SCHOOL
 - COLLEGE OR UNIVERSITY
 - HOSPITAL
 - COAST GUARD STATION
 - CHURCH
 - CHURCH WITH CEMETERY
 - CEMETERY
 - PATROL STATION
 - CORRECTION OR PENAL INSTITUTION
 - QUARRY
 - MINE OR PIT
 - HIGHWAY GARAGE OR MAINT. YARD
 - HIGHWAY DIV. OR DIST. OFFICE
 - MILITARY POST
 - WEIGH STATION
 - FAIRGROUNDS
 - HISTORICAL SITE
 - POINTS OF INTEREST
 - POST OFFICE
 - STATE FOREST
 - LIGHTHOUSE
 - MOUNTAIN SUMMIT
 - MOUNTAIN GAP
 - OVERLOOK
 - REST AREA
 - VISITOR CTR/REST AREA
 - WELCOME CTR/REST AREA
 - AIRPORT
 - MILITARY AIRPORT
 - NATIONAL / STATE FOREST BOUNDARY
 - WILDLIFE REFUGE
 - NATIONAL / STATE PARK BOUNDARY
 - GAME LANDS BOUNDARY
 - MILITARY RESERVATION BOUNDARY
 - INDIAN RESERVATION BOUNDARY



ASHE COUNTY NORTH CAROLINA

PREPARED BY THE
NORTH CAROLINA DEPARTMENT OF TRANSPORTATION
OPERATIONS PROGRAM MANAGEMENT UNIT - MAPPING SECTION
IN COOPERATION WITH THE
U.S. DEPARTMENT OF TRANSPORTATION
FEDERAL HIGHWAY ADMINISTRATION



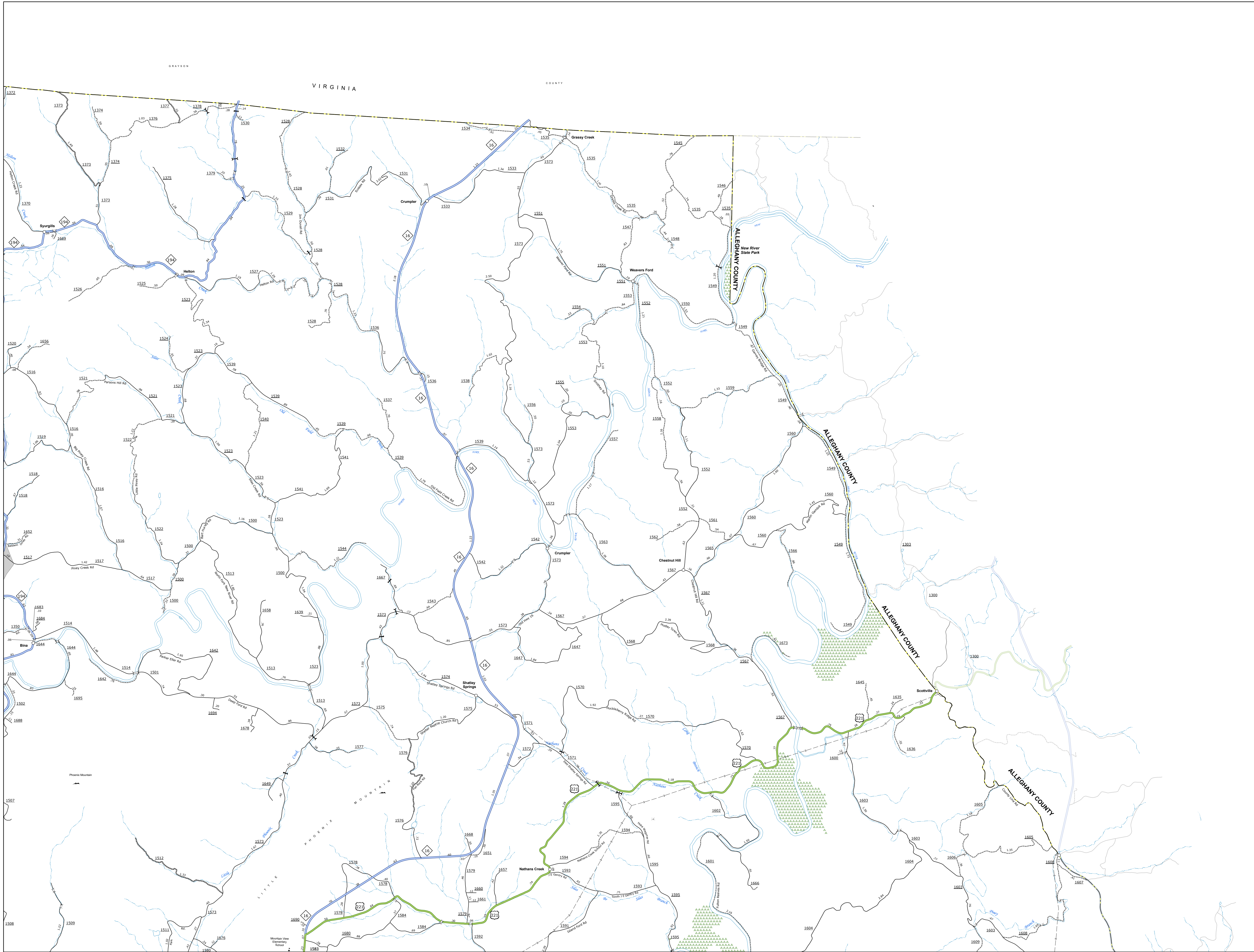
NORTH CAROLINA PLANE COORDINATE SYSTEM
LAMBERT CONFORMAL CONIC PROJECTION

COPIES OF THIS MAP ARE AVAILABLE TO THE
PUBLIC AT NOMINAL COST. CONTACT US TO ORDER:
mapping.support@ncdot.gov
<https://connect.ncdot.gov/resources/State-Mapping/Pages/Ordering-Maps.aspx>

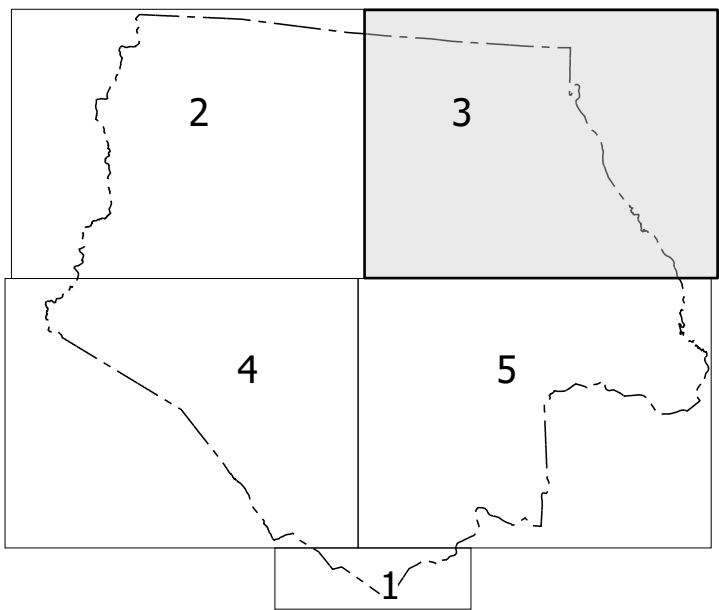


TERMS OF USE: The Mapping Services portal is to provide the most accurate and current information possible. Map data is compiled from numerous sources with varying levels of precision and may not always reflect the most current information. The accuracy, currency, and completeness of the information is not guaranteed. The information shown on this map was last updated on September 2024. For digital copies of this map or additional map products, visit <https://www.ncdot.gov/transportation/Mapping/Products/Maps.aspx>

COPIES OF THIS MAP ARE AVAILABLE TO THE PUBLIC AT NO CHARGE. CONTACT US TO ORDER: maps@ncdot.gov or 1-800-368-6848

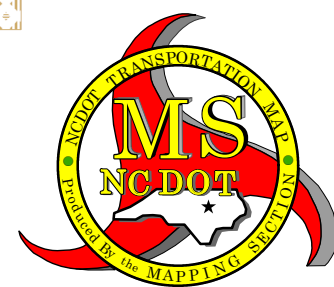


SHEET KEY



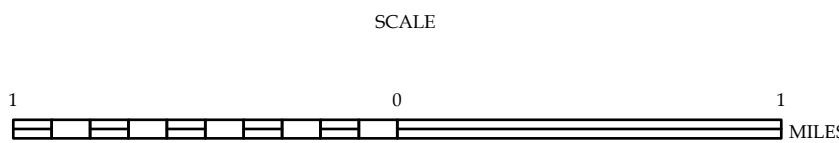
LEGEND

- INTERSTATE US NC Divided Hwy Undivided Hwy
- BLUE RIDGE PARKWAY
- UNPAVED SURFACED ROAD
- HARD SURFACED ROAD
- NON-SYSTEM ROAD
- PROVISIONALLY DRAWN ROAD
- PROJECTED LOCATION
- INTERSECTION DISTANCE
- STANDARD ROAD BRIDGE
- RAILROAD BRIDGE
- DRAW SPAN ON BRIDGE
- PEDESTRIAN BRIDGE
- PEDESTRIAN WALKWAY
- PEDESTRIAN UNDERPASS
- VEHICULAR UNDERPASS
- TUNNEL
- CULVERT
- PIPE
- INTERSTATE HIGHWAY
- U.S. NUMBERED HIGHWAY
- N.C. NUMBERED HIGHWAY
- U.S. NUMBERED BICYCLE ROUTE
- N.C. NUMBERED BICYCLE ROUTE
- INTERSTATE INTERCHANGE NUMBER
- SECONDARY ROAD NUMBER
- TELEPHONE PRESTANDARD
- UTILITY LINES
- RAILROAD LINE
- RAILROAD STATION
- INST. AREA
- STATE LINE
- COUNTY LINE
- SMOOTHED URBAN BOUNDARIES
- CITY LIMITS
- FERRY ROUTE AND RAMP
- NARROW CREEK OR STREAM
- WIDE RIVER OR CREEK
- RESERVOIR, POND OR LAKE W/ ISLAND
- DAM OR DAM WITH LOCK
- WATERFALL
- SWAMP
- COMMUNITY
- COUNTY SEAT
- SCHOOL
- COLLEGE OR UNIVERSITY
- HOSPITAL
- COAST GUARD STATION
- CHURCH
- CHURCH WITH CEMETERY
- CEMETERY
- PATROL STATION
- CORRECTION OR PENAL INSTITUTION
- QUARRY
- MINE OR PIT
- HIGHWAY GARAGE OR MAINT. YARD
- HIGHWAY DIV. OR DIST. OFFICE
- MILITARY POST
- WEIGH STATION
- FAIRGROUNDS
- HISTORICAL SITE
- POINTS OF INTEREST
- POST OFFICE
- STATE FOREST
- LIGHTHOUSE
- MOUNTAIN SUMMIT
- MOUNTAIN GAP
- OVERLOOK
- REST AREA
- VISITOR CTR/REST AREA
- WELCOME CTR/REST AREA
- AIRPORT
- MILITARY AIRPORT
- NATIONAL / STATE FOREST BOUNDARY
- WILDLIFE REFUGE
- NATIONAL / STATE PARK BOUNDARY
- GAME LANDS BOUNDARY
- MILITARY RESERVATION BOUNDARY
- INDIAN RESERVATION BOUNDARY



ASHE COUNTY NORTH CAROLINA

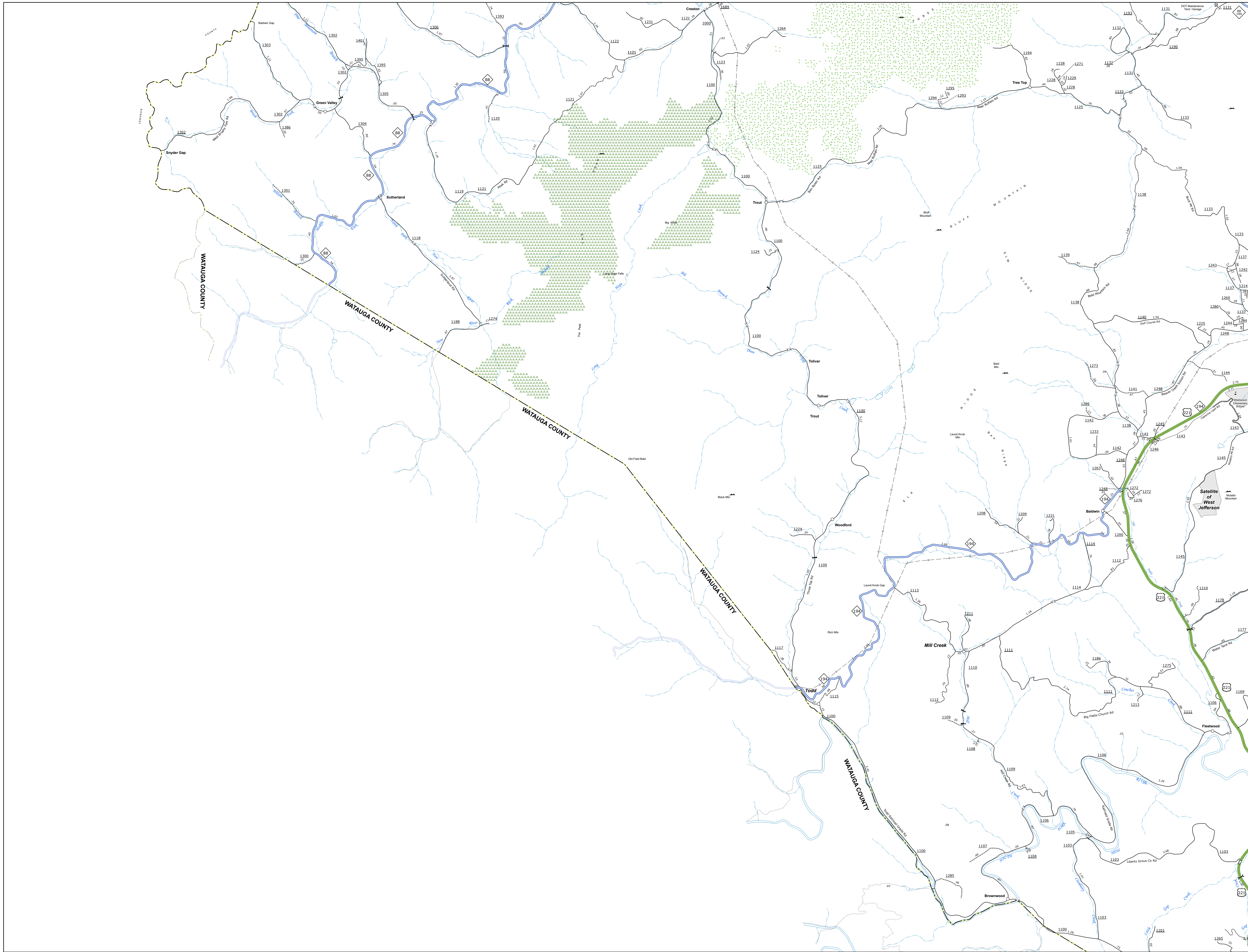
PREPARED BY THE
NORTH CAROLINA DEPARTMENT OF TRANSPORTATION
OPERATIONS PROGRAM MANAGEMENT UNIT - MAPPING SECTION
IN COOPERATION WITH THE
U.S. DEPARTMENT OF TRANSPORTATION
FEDERAL HIGHWAY ADMINISTRATION



NORTH CAROLINA PLANE COORDINATE SYSTEM
LAMBERT CONFORMAL CONIC PROJECTION

TERMS OF USE: The Mapping Section's goal is to provide the most accurate and current information possible. Map data is compiled from numerous sources with varying dates of publication and map accuracy standards. As a result, this accuracy, currency and completeness of information cannot be guaranteed. The information shown on this map was last updated in September 2024. The information shown on this map is for informational purposes only. It is not to be used for legal purposes.

COPIES OF THIS MAP ARE AVAILABLE TO THE PUBLIC AT NO ANNUAL COST. CONTACT US TO ORDER: MappingSection@ncdot.gov OR 1-800-368-6848. This map is available in digital format on the NCDOT website at <https://www.ncdot.gov/Mapping/Products/Maps/County/Ashe/AsheCountyMap.aspx>.



Sheet Key

LEGEND

INTERSTATE	US	NC	Divided Hwy
Blue Ridge Parkway	Unimproved Hwy		
Unpaved Surfaced Road	Hard Surfaced Road	Non-System Road	Provisionally Drawn Road
Protected Location	Intersection Distance	Standard Road Bridge	Rail Road Bridge
Draw Span on Bridge	Pedestrian Bridge	Pedestrian Walkway	Pedestrian Underpass
Vehicle Underpass	Tunnel	Culvert	Pipe
Interstate Highway	U.S. Numbered Highway	N.C. Numbered Highway	U.S. Numbered Bicycle Route
S.C. Numbered Bicycle Route	Interstate Interchange Number	Secondary Road Number	Utility Lines
Rail Road Line	Rail Road Station	Inset Area	State Line
County Line	Smoothed Urban Boundaries	City Limits	Ferry Route and Ramp
Narrow Creek or Stream	Wide River or Creek	Reservoir, Pond or Lake w/ Island	Dam or Dam with Lock
Waterfall	Swamp	Community	County Seat
School	College or University	Hospital	Coast Guard Station
Church	Church with Cemetery	Cemetery	Patrol Station
Correction or Penal Institution	Quarry	Mine or Pit	Highway Garage or Maint. Yard
Highway Div. or Dist. Office	Military Post	Weight Station	Fairgrounds
Historical Site	Points of Interest	Post Office	State Forest
Lighthouse	Mountain Summit	Mountain Gap	Overlook
Rest Area	Visitor Ctr/Rest Area	Welcome Ctr/Rest Area	Airport
Military Airport	National / State Forest Boundary	Wildlife Refuge	National / State Park Boundary
Game Lands Boundary	Military Reservation Boundary	Indian Reservation Boundary	

ASHE COUNTY

NORTH CAROLINA

PREPARED BY THE
NORTH CAROLINA DEPARTMENT OF TRANSPORTATION
OPERATIONS PROGRAM MANAGEMENT UNIT - MAPPING SECTION
IN COOPERATION WITH THE
U.S. DEPARTMENT OF TRANSPORTATION
FEDERAL HIGHWAY ADMINISTRATION

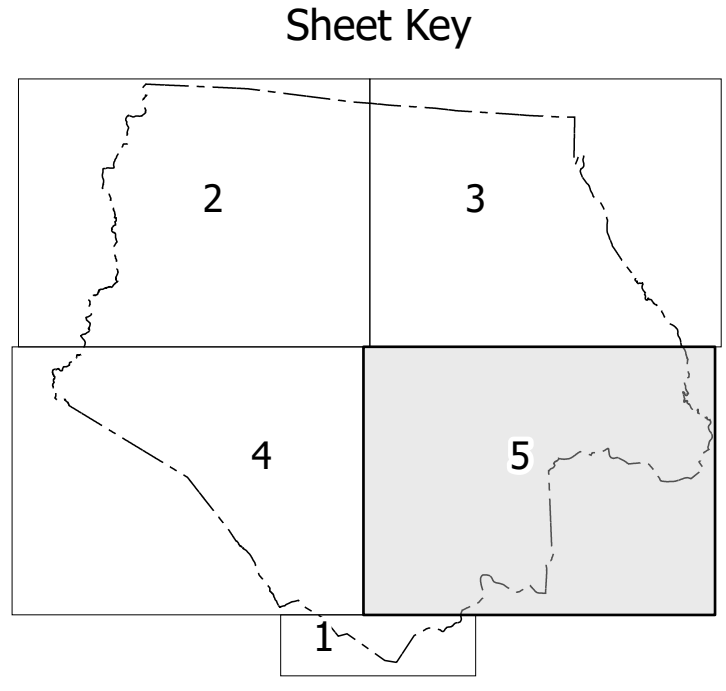
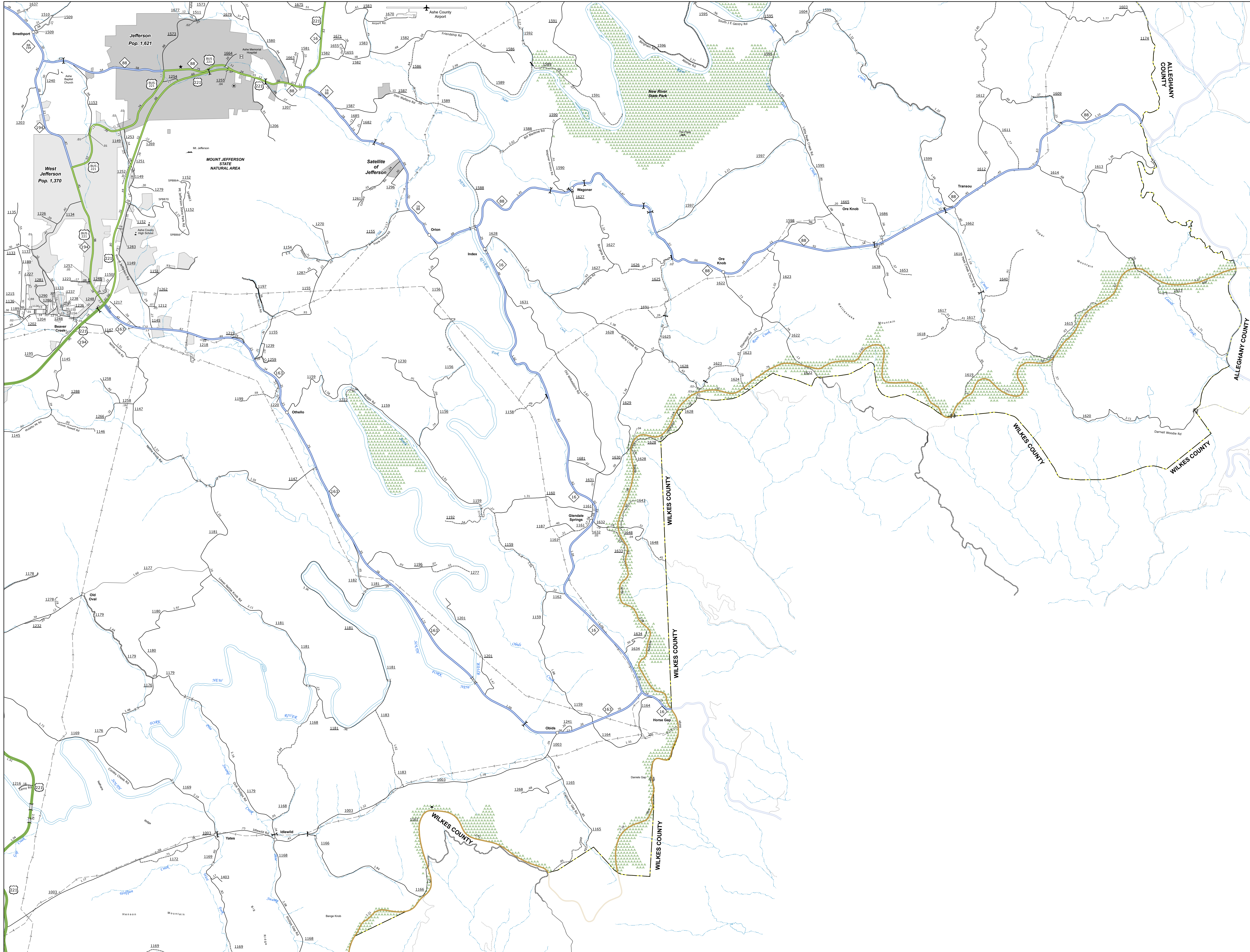
SCALE

NORTH CAROLINA PLANE COORDINATE SYSTEM
LAMBERT CONFORMAL CONIC PROJECTION

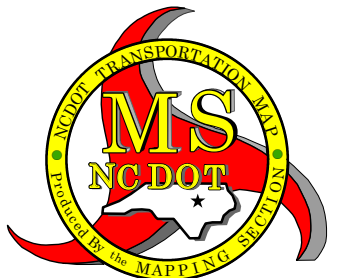
SHEET 4 of 5

TERMS OF USE: The Mapping Section's goal is to provide the most accurate and current information possible. Map data is compiled from numerous sources with varying dates of publication and may contain inaccuracies. As a result, the accuracy, currency, and completeness of this map cannot be guaranteed. The information shown on this map was last updated in September 2024.

COPIES OF THIS MAP ARE AVAILABLE TO THE PUBLIC. FOR MORE INFORMATION, CONTACT THE ASHE COUNTY MAPS SECTION AT (704) 334-4480.



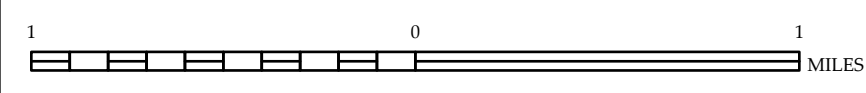
- LEGEND**
- INTERSTATE US NC Divided Hwy Undivided Hwy
 - BLUE RIDGE PARKWAY
 - UNPAVED SURFACED ROAD
 - HARD SURFACED ROAD
 - NON-SYSTEM ROAD
 - PROVISIONALLY DRAWN ROAD
 - PROTECTED LOCATION
 - INTERSECTION DISTANCE
 - STANDARD ROAD BRIDGE
 - RAILROAD BRIDGE
 - DRAW SPAN ON BRIDGE
 - PEDESTRIAN BRIDGE
 - PEDESTRIAN WALKWAY
 - PEDESTRIAN UNDERPASS
 - VEHICULAR UNDERPASS
 - TUNNEL
 - CULVERT
 - PIPE
 - INTERSTATE HIGHWAY
 - U.S. NUMBERED HIGHWAY
 - N.C. NUMBERED HIGHWAY
 - U.S. NUMBERED BICYCLE ROUTE
 - N.C. NUMBERED BICYCLE ROUTE
 - INTERSTATE INTERCHANGE NUMBER
 - SECONDARY ROAD NUMBER
 - UTILITY LINES
 - RAILROAD LINE
 - RAILROAD STATION
 - INSET AREA
 - STATE LINE
 - COUNTY LINE
 - SMOOTHED URBAN BOUNDARIES
 - CITY LIMITS
 - FERRY ROUTE AND RAMP
 - NARROW CREEK OR STREAM
 - WIDE RIVER OR CREEK
 - RESERVOIR, POND OR LAKE W/ ISLAND
 - DAM OR DAM WITH LOCK
 - WATERFALL
 - SWAMP
 - COMMUNITY
 - COUNTY SEAT
 - SCHOOL
 - COLLEGE OR UNIVERSITY
 - HOSPITAL
 - COAST GUARD STATION
 - CHURCH
 - CHURCH WITH CEMETERY
 - CEMETERY
 - PATROL STATION
 - CORRECTION OR PENAL INSTITUTION
 - QUARRY
 - MINE OR PIT
 - HIGHWAY GARAGE OR MAINT. YARD
 - HIGHWAY DIV. OR DIST. OFFICE
 - MILITARY POST
 - WEIGH STATION
 - FAIRGROUNDS
 - HISTORICAL SITE
 - POINTS OF INTEREST
 - POST OFFICE
 - STATE FOREST
 - LIGHTHOUSE
 - MOUNTAIN SUMMIT
 - MOUNTAIN GAP
 - OVERLOOK
 - REST AREA
 - VISITOR CTR REST AREA
 - WELCOME CTR REST AREA
 - AIRPORT
 - MILITARY AIRPORT
 - NATIONAL / STATE FOREST BOUNDARY
 - WILDLIFE REFUGE
 - NATIONAL / STATE PARK BOUNDARY
 - GAME LANDS BOUNDARY
 - MILITARY RESERVATION BOUNDARY
 - INDIAN RESERVATION BOUNDARY



ASHE COUNTY NORTH CAROLINA

PREPARED BY THE
NORTH CAROLINA DEPARTMENT OF TRANSPORTATION
OPERATIONS PROGRAM MANAGEMENT UNIT - MAPPING SECTION
IN COOPERATION WITH THE
U.S. DEPARTMENT OF TRANSPORTATION
FEDERAL HIGHWAY ADMINISTRATION

SCALE



NORTH CAROLINA PLANE COORDINATE SYSTEM
LAMBERT CONFORMAL CONIC PROJECTION
SHEET 5 of 5