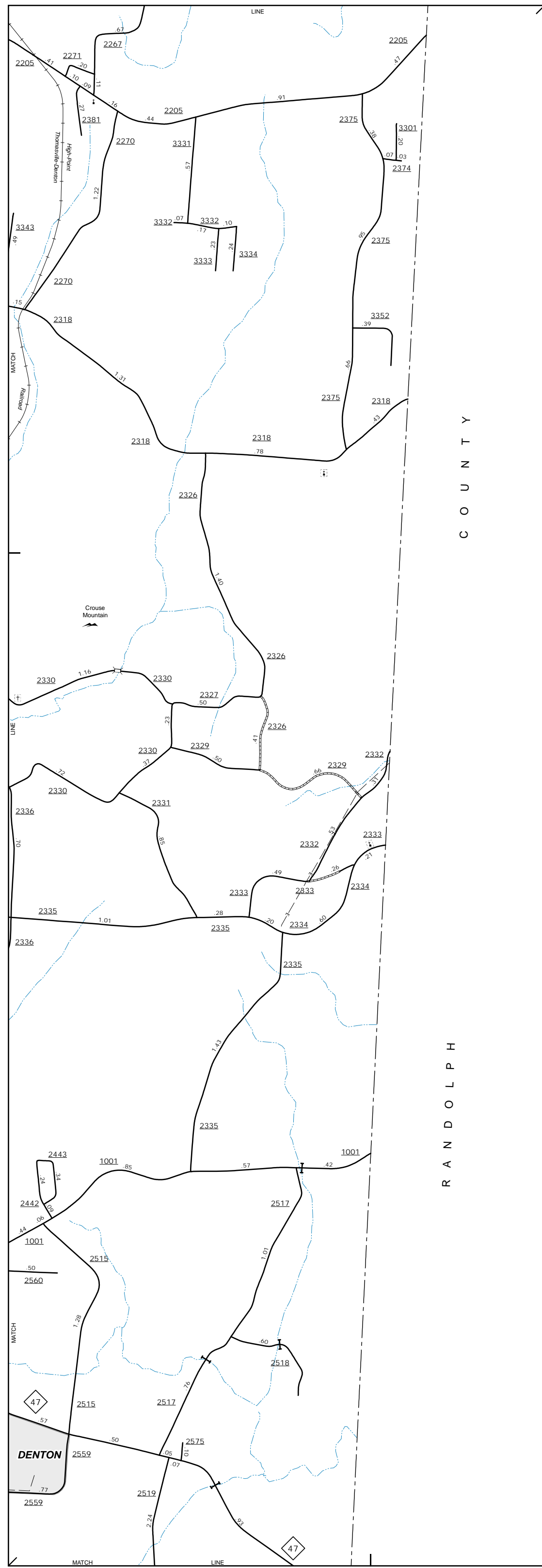


COPIES OF THIS MAP ARE AVAILABLE
TO THE PUBLIC AT NOMINAL COST.
ADDRESS:
N.C. DEPARTMENT OF TRANSPORTATION
SRMU - MAPPING SECTION
4809 BERYL RD
RALEIGH, NC 27606



High Point and Walburg

ENLARGED MUNICIPAL AND SUBURBAN
DAVIDSON COUNTY
NORTH CAROLINA

PREPARED BY THE
 NORTH CAROLINA DEPARTMENT OF TRANSPORTATION
 OPERATIONS PROGRAM MANAGEMENT UNIT - MAPPING
 IN COOPERATION WITH THE
 U.S. DEPARTMENT OF TRANSPORTATION
 FEDERAL HIGHWAY ADMINISTRATION

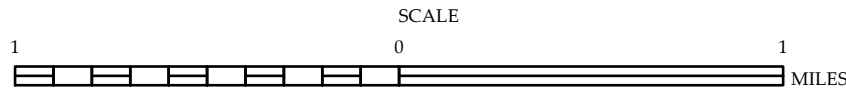
10,000 FOOT GRID BASED ON NORTH CAROLINA PLANE COORDINATES
 LAMBERT CONFORMAL CONIC PROJECTION

ENLARGED MUNICIPAL AND SUBURBAN AREAS

DAVIDSON COUNTY

NORTH CAROLINA

PREPARED BY THE
NORTH CAROLINA DEPARTMENT OF TRANSPORTATION
OPERATIONS PROGRAM MANAGEMENT UNIT - MAPPING SECTION
IN COOPERATION WITH THE
U.S. DEPARTMENT OF TRANSPORTATION
FEDERAL HIGHWAY ADMINISTRATION



10,000 FOOT GRID BASED ON NORTH CAROLINA PLANE COORDINATE SYSTEM
LAMBERT CONFORMAL CONIC PROJECTION