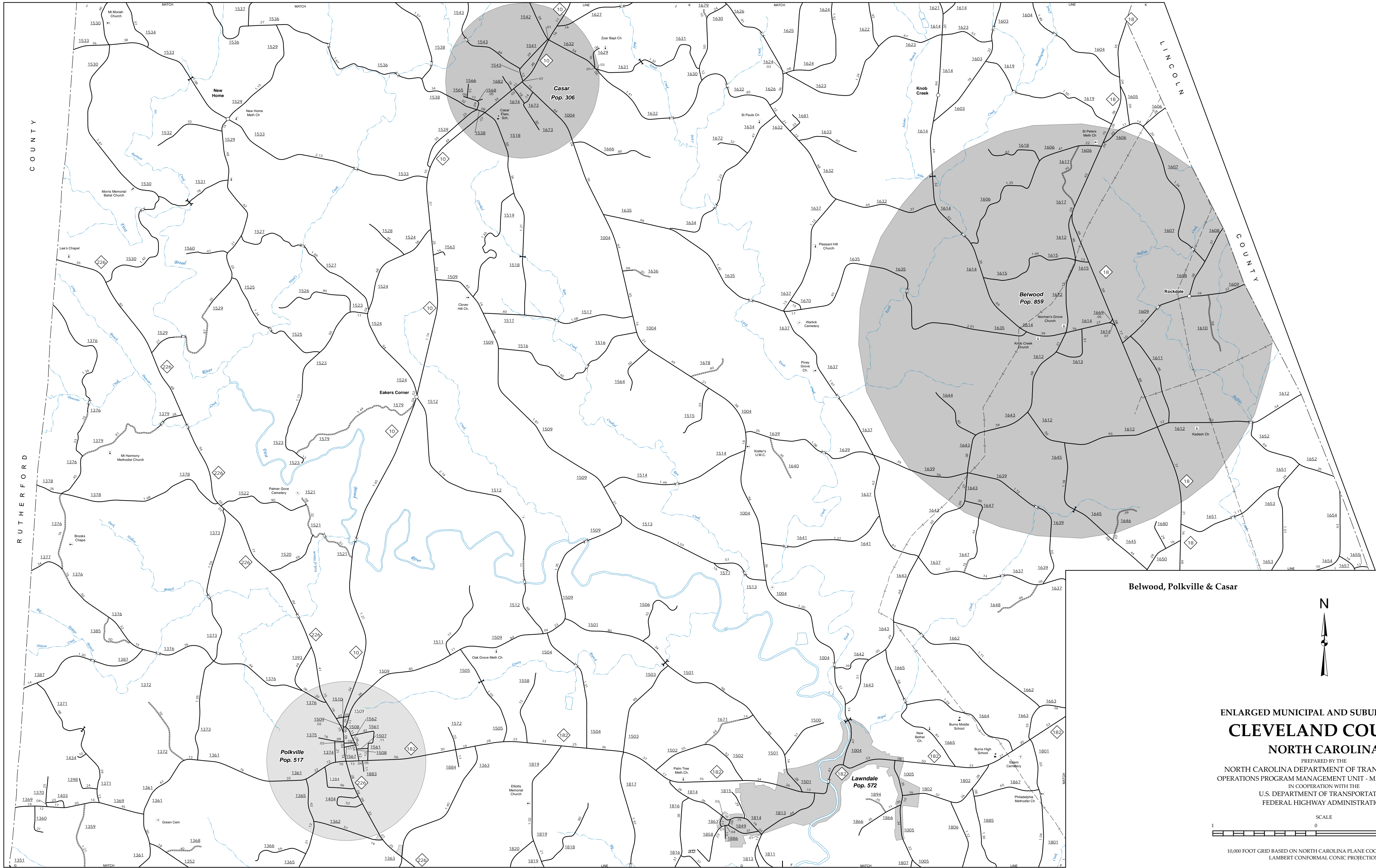


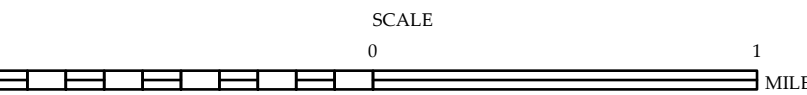
The Mapping Section's goal is to provide the most accurate and current information possible. Map data is compiled from numerous sources including data of publication and map accuracy standards. As a result, the accuracy of the information shown on this map is not guaranteed. The map is provided as a reference only and is not intended for use as a legal document. The information shown on this map was last updated in July 2022. For additional information, visit <http://www.dcd.state.nc.gov/transportation/mapping> and click on Data Providers or contact us by phone at (919) 833-4480.

COPIES OF THIS MAP ARE AVAILABLE
FOR PURCHASE AT A NOMINAL COST
ADDRESS: N.C. DEPARTMENT OF TRANSPORTATION
MSAU - MAPPING SECTION
4801 BERT RD
RALEIGH, NC 27609



ENLARGED MUNICIPAL AND SUBURBAN AREAS
CLEVELAND COUNTY
NORTH CAROLINA

PREPARED BY THE
NORTH CAROLINA DEPARTMENT OF TRANSPORTATION
OPERATIONS PROGRAM MANAGEMENT UNIT - MAPPING SECTION
IN COOPERATION WITH THE
U.S. DEPARTMENT OF TRANSPORTATION
FEDERAL HIGHWAY ADMINISTRATION



10,000 FOOT GRID BASED ON NORTH CAROLINA PLANE COORDINATE SYSTEM
LAMBERT CONFORMAL CONIC PROJECTION