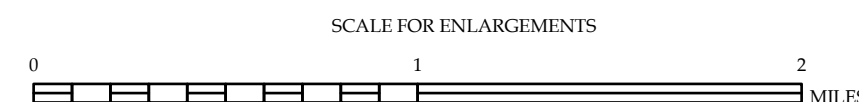
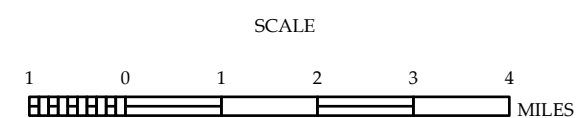


- [illegible]



DAVIDSON COUNTY
NORTH CAROLINA

PREPARED BY THE
NORTH CAROLINA DEPARTMENT OF TRANSPORTATION
OPERATIONS PROGRAM MANAGEMENT UNIT - MAPPING SECTION
IN COOPERATION WITH THE
U.S. DEPARTMENT OF TRANSPORTATION
FEDERAL HIGHWAY ADMINISTRATION



NORTH CAROLINA PLANE COORDINATE SYSTEM
LAMBERT CONFORMAL CONIC PROJECTION

SHEET 1 OF 6

COPIES OF THIS MAP ARE AVAILABLE
TO THE PUBLIC AT NOMINAL COST:

mappingsupport@ncdot.gov
[https://connect.ncdot.gov/resources/
State-Mapping/Pages/Ordering-Maps.aspx](https://connect.ncdot.gov/resources/State-Mapping/Pages/Ordering-Maps.aspx)
(919) 834-8480

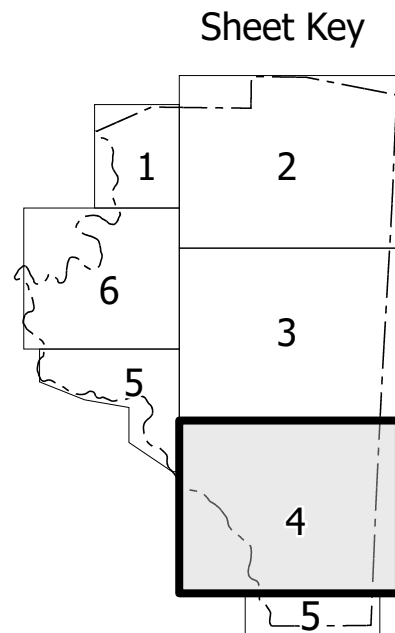
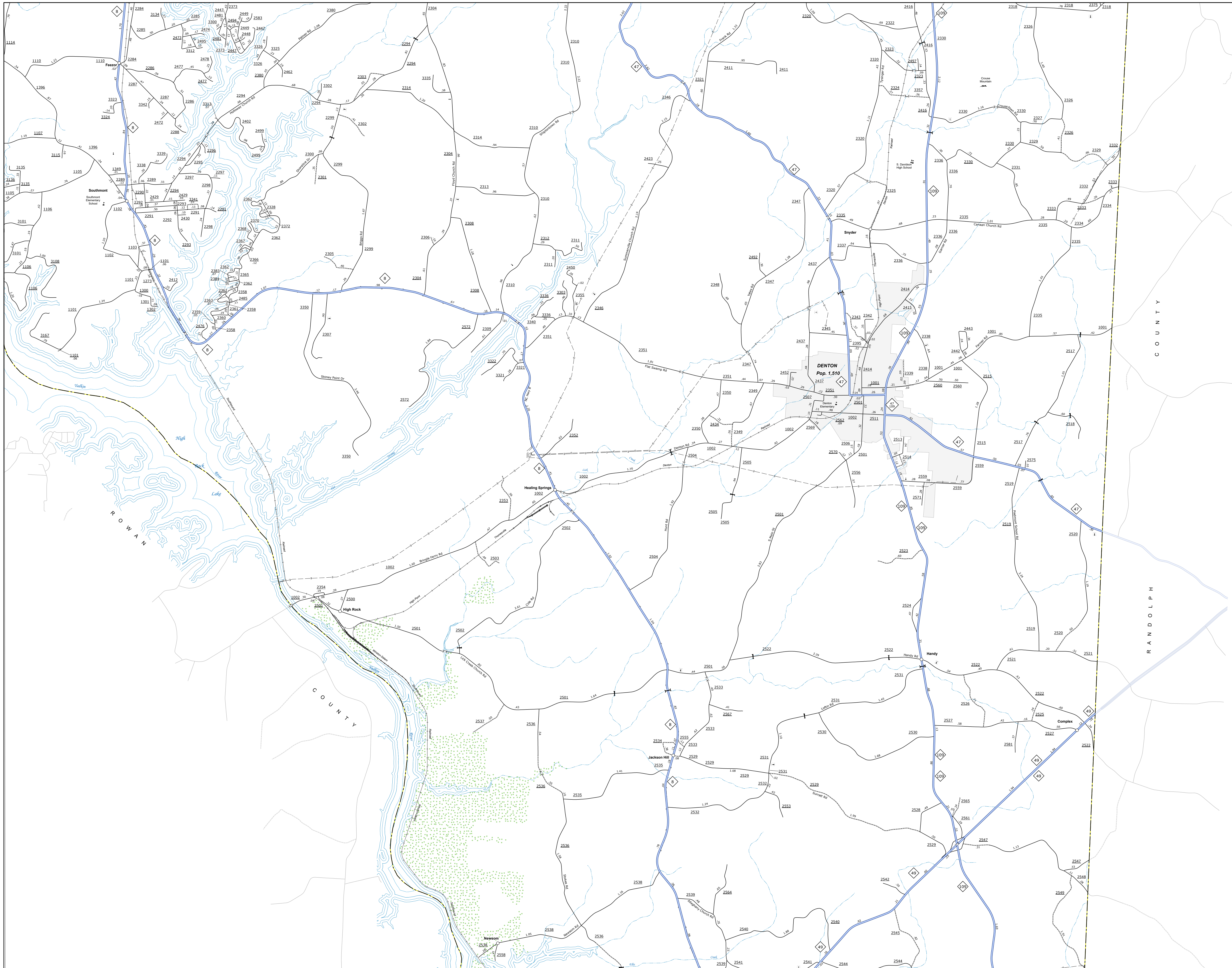
The Mapping Section's goal is to provide the most accurate and current information possible. Map data is compiled from numerous sources with varying dates of publication and map accuracy standards. As a result, the accuracy, currency and completeness of the data provided will vary. This map includes state-maintained roads and important non-system roads.

The information shown on this map was last updated in June 2023. For additional information, visit <http://www.nrdot.gov/travel/statemapping/> and click on Data Providers or contact us by phone at (919) 835-8480.

DIVISION 9 DISTRICT 1 **DAVIDSON COUNTY** NORTH CAROLINA FIPS 05

The Mapping Services Unit is to provide the most accurate and current information possible. Map data is compiled from numerous sources with varying dates of publication and map accuracy standards. As a result, the accuracy of the map cannot be guaranteed. The user is advised to use the map for general information only and not for navigation or other critical purposes. For additional information or to report an error, please contact the Mapping Services Unit at (919) 855-1400.

COPIES OF THIS MAP ARE AVAILABLE TO THE PUBLIC AT NO CHARGE. FOR INFORMATION, CONTACT THE NORTH CAROLINA DEPARTMENT OF TRANSPORTATION, OPERATIONS PROGRAM MANAGEMENT UNIT - MAPPING SECTION, 1000 SOUTH MAIN STREET, RALEIGH, NC 27601. (919) 855-1400.



LEGEND

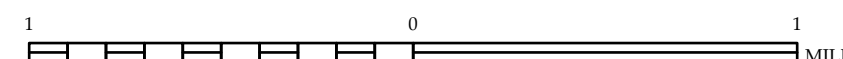
- INTERSTATE US NC Divided Hwy Undivided Hwy
- BLUE RIDGE PARKWAY
- CONCRETE-PAVED ROAD
- HARD SURFACED ROAD
- NON-SYSTEM ROAD
- PROPOSED LOCATION
- INTERSECTION RESTRICTION
- STANDARD ROAD BRIDGE
- RAILROAD BRIDGE
- DRAW SPAN ON BRIDGE
- PEDESTRIAN BRIDGE
- PEDESTRIAN WALKWAY
- PEDESTRIAN UNDERPASS
- VEHICLE UNDERPASS
- TUNNEL
- ELEVATOR
- WYE
- INTERSTATE HIGHWAY
- U.S. NUMBERED HIGHWAY
- N.C. NUMBERED HIGHWAY
- N.C. NUMBERED BI-CYCLE ROUTE
- N.C. NUMBERED BI-CYCLE ROUTE
- INTERSTATE INTERCHANGE NUMBER
- SECONDARY ROAD NUMBER
- UTILITY LINES
- RAILROAD LINE
- RAILROAD STATION
- RAILROAD CROSSING
- STATE LINE
- COUNTY LINE
- CITY LIMITS
- FERRY ROUTE
- NARROW CREEK OR STREAM
- WIDE RIVER OR CREEK
- RESERVOIR, POND OR LAKE W/ ISLAND
- DAM OR DAM WITH LEAK
- WATERFALL
- SWAMP
- COMMUNITY TOWN OR CITY CENTER
- COUNTY SEAT
- SCHOOL
- COLLEGE OR UNIVERSITY
- HOSPITAL
- COAST GUARD STATION
- CHURCH
- CHURCH WITH CEMETERY
- CEMETERY
- POLICE STATION
- CORRECTIONAL INSTITUTION
- QUARRY
- WIND OR PET
- HIGHWAY GARAGE OR MAINT. YARD
- HIGHWAY DIV. OR DIST. OFFICE
- MILITARY POST
- WEIGH STATION
- FOREIGN BOUNDARY
- HISTORICAL SITE
- POINT OF INTEREST
- STATE FOREST
- LOFT BRIDGE
- MOUNTAIN SUMMIT
- OVERLOOK
- REST AREA
- VISITOR CENTER AREA
- WELCOME CENTER AREA
- AIRPORT
- MILITARY AIRPORT
- WILDLIFE REFUGE
- NATIONAL STATE PARK BOUNDARY
- GAME LANDS BOUNDARY
- MILITARY RESERVATION BOUNDARY
- INDIAN RESERVATION BOUNDARY



DAVIDSON COUNTY NORTH CAROLINA

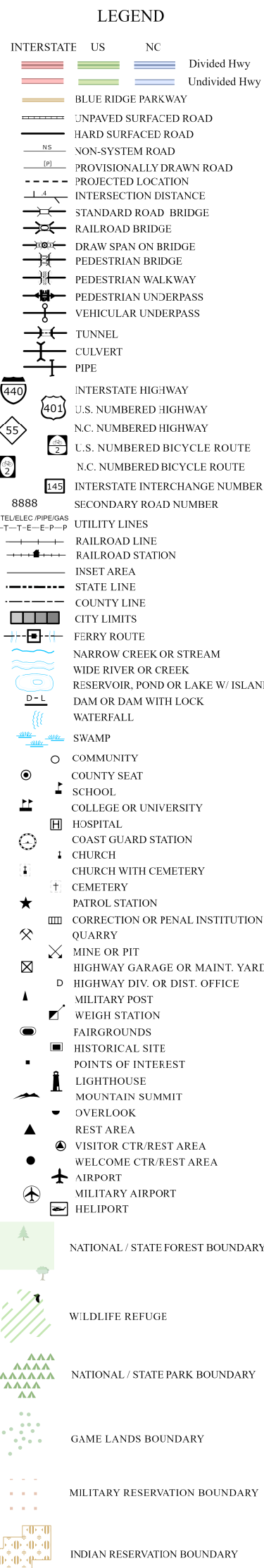
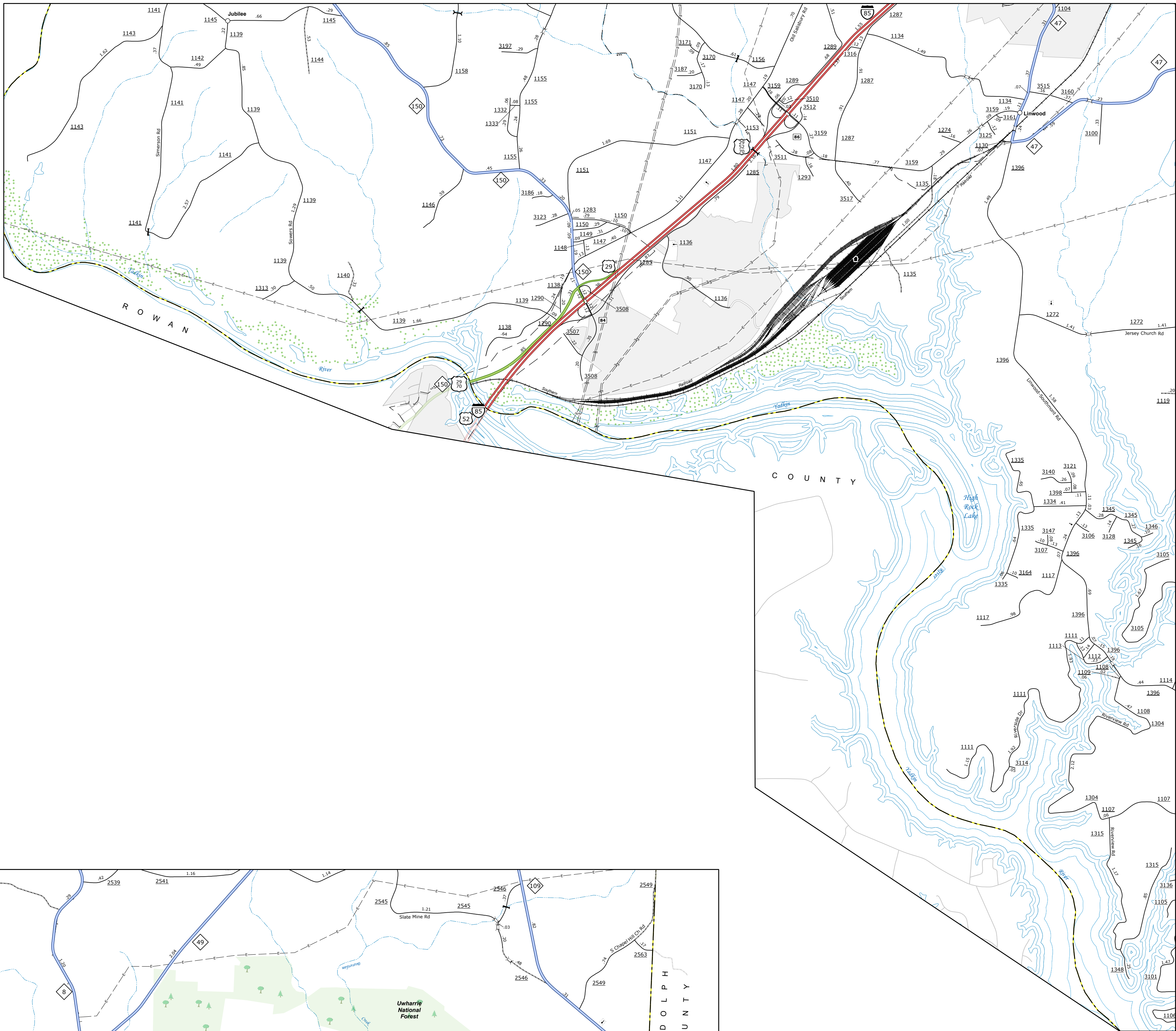
PREPARED BY THE
NORTH CAROLINA DEPARTMENT OF TRANSPORTATION
OPERATIONS PROGRAM MANAGEMENT UNIT - MAPPING SECTION
IN COOPERATION WITH THE
U.S. DEPARTMENT OF TRANSPORTATION
FEDERAL HIGHWAY ADMINISTRATION

SCALE



NORTH CAROLINA PLANE COORDINATE SYSTEM
LAMBERT CONFORMAL CONIC PROJECTION

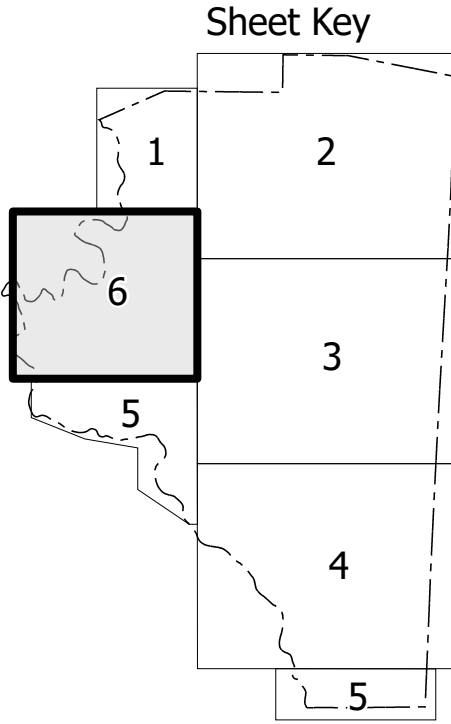
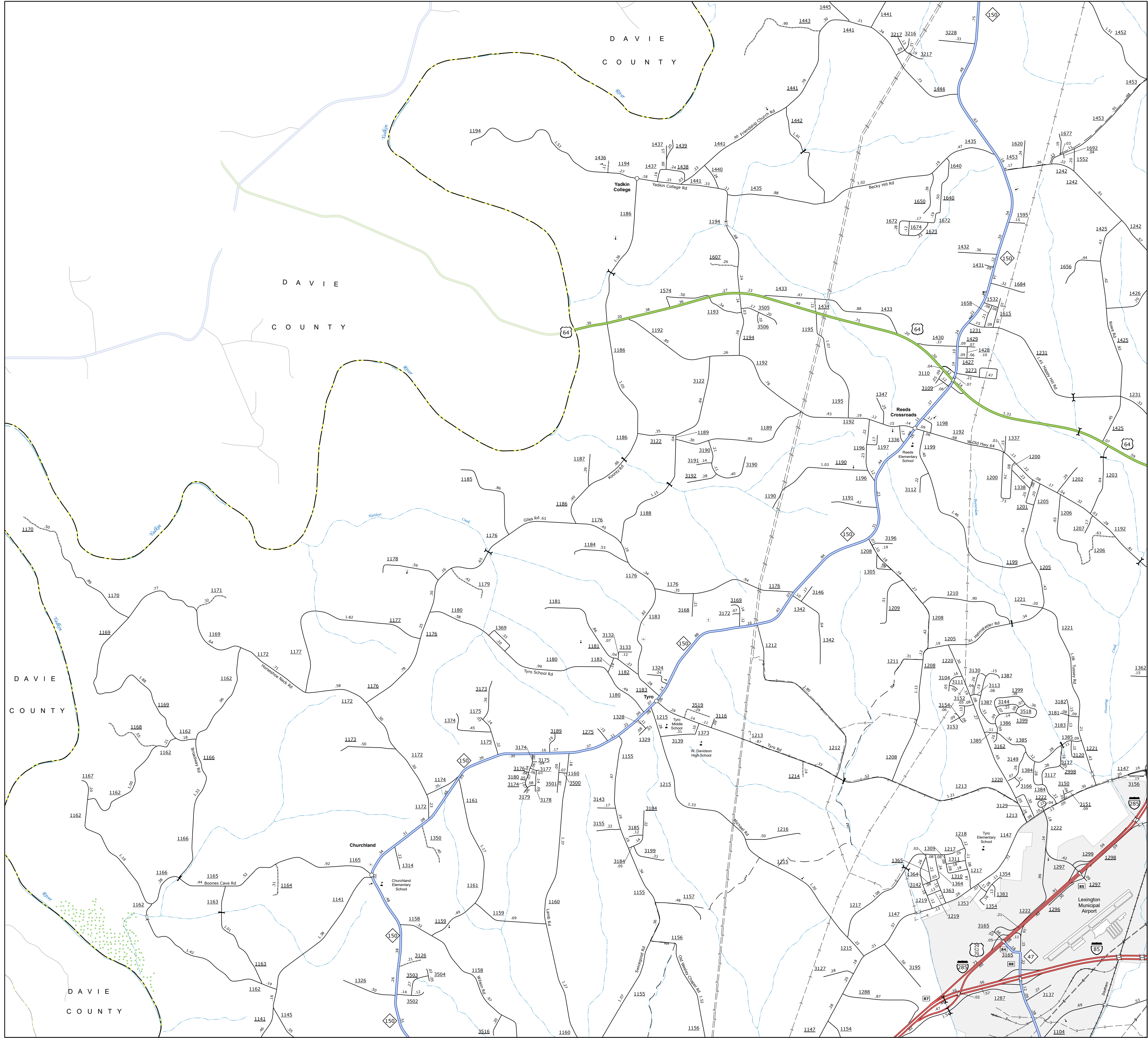
COPIES OF THIS MAP ARE AVAILABLE
TO THE PUBLIC AT NOMINAL COST:
mappingsupport@nodot.gov
[https://connect.nodot.gov/resources/
State-Mapping/Pages/Ordering-Maps.aspx](https://connect.nodot.gov/resources/State-Mapping/Pages/Ordering-Maps.aspx)
(919) 814-8490



SHEET 5 of 6
DIVISION 9 DISTRICT 1 DAVIDSON COUNTY NORTH CAROLINA FIPS 05

The Mapping Section's goal is to provide the most accurate and current information possible. Map data is compiled from a variety of sources, including aerial photography, ground surveys, and other data. The map is compiled and updated on a regular basis. The information shown on this map was last updated in June 2023. For additional information, visit the Davidson County website at www.davidsoncountync.gov. The map is provided for informational purposes only and is not intended to be used for legal or financial purposes. The map is provided as a service to the public and is not intended to be used for legal or financial purposes.

COPYRIGHT © 2023 BY THE PUBLIC AT LARGE. ALL RIGHTS RESERVED. This map is provided for informational purposes only and is not intended to be used for legal or financial purposes. The map is provided as a service to the public and is not intended to be used for legal or financial purposes.



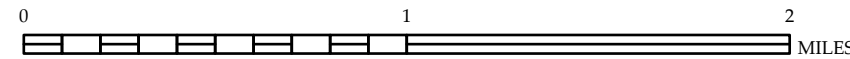
- LEGEND**
- INTERSTATE US NC
 - Divided Hwy
 - Undivided Hwy
 - BLVD BRIDGE PARKWAY
 - UNPAVED DRIVEWAY ROAD
 - HARD SURFACED ROAD
 - WORKSTREET ROAD
 - PROVISIONALLY DRAWN ROAD
 - PROJECTED LOW ATTN
 - INTERSTATE TRIP DISTANCE
 - STANDARD ROAD BRIDGE
 - RAILROAD BRIDGE
 - ORAN SPAN ON BRIDGE
 - PEDESTRIAN BRIDGE
 - PEDESTRIAN WALKWAY
 - PEDESTRIAN UNDERPASS
 - VEHICULAR UNDERPASS
 - TUNNEL
 - CULVERT
 - PPP
 - INTERSTATE HIGHWAY
 - U.S. NUMBERED HIGHWAY
 - S.C. NUMBERED HIGHWAY
 - U.S. NUMBERED BI-CYCLE ROUTE
 - S.C. NUMBERED BI-CYCLE ROUTE
 - INTERSTATE INTERCHANGE NUMBER
 - SECONDARY ROAD NUMBER
 - RAILROAD
 - UTILITY LINE
 - RAILROAD LINE
 - RAILROAD STATION
 - POST OFFICE
 - STATE LINE
 - COUNTY LINE
 - CITY LIMITS
 - FINED ROUTE
 - NARROW CREEK OR STREAM
 - WIDE RIVER OR CREEK
 - RESERVOIR, POND OR LAKE W/ ISLAND
 - DAM OR DAM WITH LOCK
 - WATERFALL
 - SWAMP
 - COUNTY SEAT
 - SCHOOL
 - COLLEGE OR UNIVERSITY
 - HOSPITAL
 - COUNTY BOARD STATION
 - CHURCH
 - CHURCH WITH CEMETERY
 - CEMETERY
 - PATROL STATION
 - CORRECTIONAL INSTITUTION
 - QUARRY
 - MINI OR BRT
 - HIGHWAY GARAGE OR MAINT. YARD
 - INDUSTRIAL OR OFFICE
 - MILITARY POST
 - WRECK STATION
 - FARMHOUSE
 - HISTORICAL SITE
 - POINTS OF INTEREST
 - STATE FOREST
 - LIGHTHOUSE
 - MOUNTAIN SUMMIT
 - OVERLOOK
 - REST AREA
 - WELCOME CENTER AREA
 - AIRPORT
 - MILITARY AIRPORT
 - HELIPORT
 - NATIONAL STATE FOREST BOUNDARY
 - WILDLIFE REFUGE
 - NATIONAL STATE PARK BOUNDARY
 - GAME LANDS BOUNDARY
 - MILITARY RESERVATION BOUNDARY
 - INDIAN RESERVATION BOUNDARY



DAVIDSON COUNTY NORTH CAROLINA

PREPARED BY THE
NORTH CAROLINA DEPARTMENT OF TRANSPORTATION
OPERATIONS PROGRAM MANAGEMENT UNIT - MAPPING SECTION
IN COOPERATION WITH THE
U.S. DEPARTMENT OF TRANSPORTATION
FEDERAL HIGHWAY ADMINISTRATION

SCALE



NORTH CAROLINA PLANE COORDINATE SYSTEM
LAMBERT CONFORMAL CONIC PROJECTION