

COPIES OF THIS MAP ARE AVAILABLE
TO THE PUBLIC AT NOMINAL COST:

mappingsupport@ncdot.gov
[https://connect.ncdot.gov/resources/
State-Mapping/Pages/Ordering-Maps.aspx](https://connect.ncdot.gov/resources/State-Mapping/Pages/Ordering-Maps.aspx)
(919) 834-8480

The Mapping Section's goal is to provide the most accurate and current information possible. Map data is compiled from numerous sources with varying dates of publication and map accuracy standards. As a result, the accuracy, currency and completeness of the data provided will vary. This map includes state-maintained roads and important non-system roads.

The information shown on this map was last updated in July 2023. For additional information, visit <http://www.ncdot.gov/travel/statemapping/> and click on Data Providers or contact us by phone at (919) 835-8480.

PREPARED BY THE
NORTH CAROLINA DEPARTMENT OF TRANSPORTATION
OPERATIONS PROGRAM MANAGEMENT UNIT - MAPPING SECTION
IN COOPERATION WITH THE
U.S. DEPARTMENT OF TRANSPORTATION
FEDERAL HIGHWAY ADMINISTRATION

SCALE

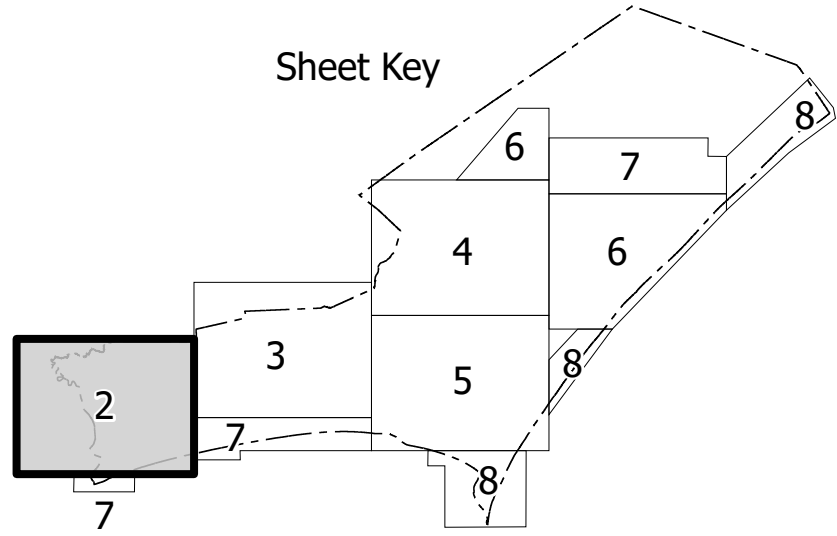
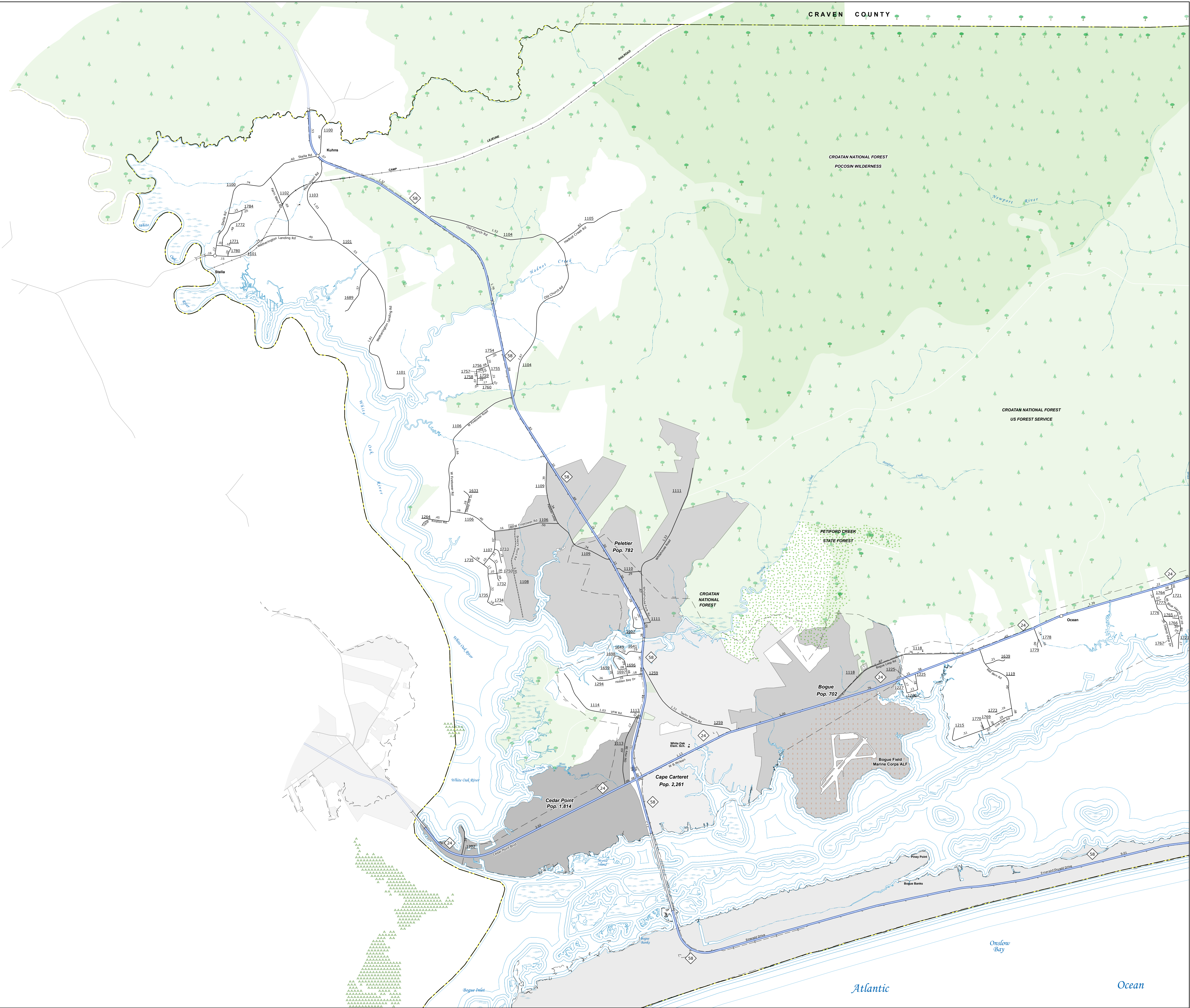
1 0 1 2 3 4 MILES

NORTH CAROLINA PLANE COORDINATE SYSTEM
LAMBERT CONFORMAL CONIC PROJECTION

DIVISION 2 DISTRICT 2 CARTERET COUNTY NORTH CAROLINA FIPS 031

The Mapping Section's goal is to provide the most accurate and current information possible. Map data is compiled from numerous sources with varying dates of publication and map accuracy standards. As a result, the accuracy of the map cannot be guaranteed. The Mapping Section is not responsible for any errors or omissions on this map. For additional information, visit <http://www.ncdot.gov> or call 1-800-368-6808. This map was prepared by the Mapping Section of the North Carolina Department of Transportation, Operations Program Management Unit - Mapping Section, in cooperation with the U.S. Department of Transportation, Federal Highway Administration, on or about 08/19/2010. The map is for informational purposes only and should not be used for legal or financial purposes. The map is not a warranty, representation, or endorsement by the North Carolina Department of Transportation, Operations Program Management Unit - Mapping Section, or the U.S. Department of Transportation, Federal Highway Administration.

COPIES OF THIS MAP ARE AVAILABLE TO THE PUBLIC AT NO CHARGE. FOR INFORMATION, CONTACT: MappingSection@ncdot.gov or call 1-800-368-6808. This map was prepared by the Mapping Section of the North Carolina Department of Transportation, Operations Program Management Unit - Mapping Section, in cooperation with the U.S. Department of Transportation, Federal Highway Administration, on or about 08/19/2010. The map is for informational purposes only and should not be used for legal or financial purposes. The map is not a warranty, representation, or endorsement by the North Carolina Department of Transportation, Operations Program Management Unit - Mapping Section, or the U.S. Department of Transportation, Federal Highway Administration.



LEGEND

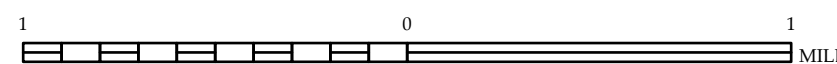
- INTERSTATE US NC Divided Hwy Undivided Hwy
- BLUE RIDGE PARKWAY
- CONCRETE-PAVED ROAD
- HARD SURFACED ROAD
- NON-SYSTEM ROAD
- PROVISIONALLY DRAWN ROAD
- PROJECTED LOCATION
- INTERSECTION DISTANCE
- STANDARD ROAD BRIDGE
- RAILROAD BRIDGE
- DRAW SPAN ON BRIDGE
- PEDESTRIAN BRIDGE
- PEDESTRIAN WALKWAY
- PEDESTRIAN UNDERPASS
- VEHICULAR UNDERPASS
- TUNNEL
- CULVERT
- WYE
- INTERSTATE HIGHWAY
- U.S. NUMBERED HIGHWAY
- U.S. NUMBERED HIGHWAY
- U.S. NUMBERED BI-CYCLE ROUTE
- N.C. NUMBERED BI-CYCLE ROUTE
- INTERSTATE INTERCHANGE NUMBER
- SECONDARY ROAD NUMBER
- UTILITY LINES
- RAILROAD LINE
- RAILROAD STATION
- INLET AREA
- STATE LINE
- COUNTY LINE
- CITY LIMITS
- FERRY ROUTE
- NARROW CREEK OR STREAM
- WIDE RIVER OR CREEK
- RESERVOIR, POND OR LAKE W/ ISLAND
- DAM OR DAM WITH LAKE
- WATERFALL
- SWAMP
- COMMUNITY TOWN OR CITY CENTER
- COUNTY SEAT
- SCHOOL
- COLLEGE OR UNIVERSITY
- HOSPITAL
- COAST GUARD STATION
- CHURCH
- CHURCH WITH CEMETERY
- CEMETERY
- DISTRICT STATION
- CORRECTIONAL INSTITUTION
- QUARRY
- WIND OR PET
- HIGHWAY GARAGE OR MAINT. YARD
- ROADSIDE BUS OR TRUCK STOP
- MILITARY POST
- WEIGH STATION
- FOREIGN BOUNDARY
- HISTORICAL SITE
- POINT OF INTEREST
- STATE FOREST
- FOOT BRIDGE
- MOUNTAIN SUMMIT
- OVERLOOK
- REST AREA
- VISITOR CENTER AREA
- WELCOME CENTER AREA
- AIRPORT
- MILITARY AIRPORT
- WILDLIFE REFUGE
- NATIONAL STATE PARK BOUNDARY
- GAME LANDS BOUNDARY
- MILITARY RESERVATION BOUNDARY
- INDIAN RESERVATION BOUNDARY



CARTERET COUNTY NORTH CAROLINA

PREPARED BY THE
NORTH CAROLINA DEPARTMENT OF TRANSPORTATION
OPERATIONS PROGRAM MANAGEMENT UNIT - MAPPING SECTION
IN COOPERATION WITH THE
U.S. DEPARTMENT OF TRANSPORTATION
FEDERAL HIGHWAY ADMINISTRATION

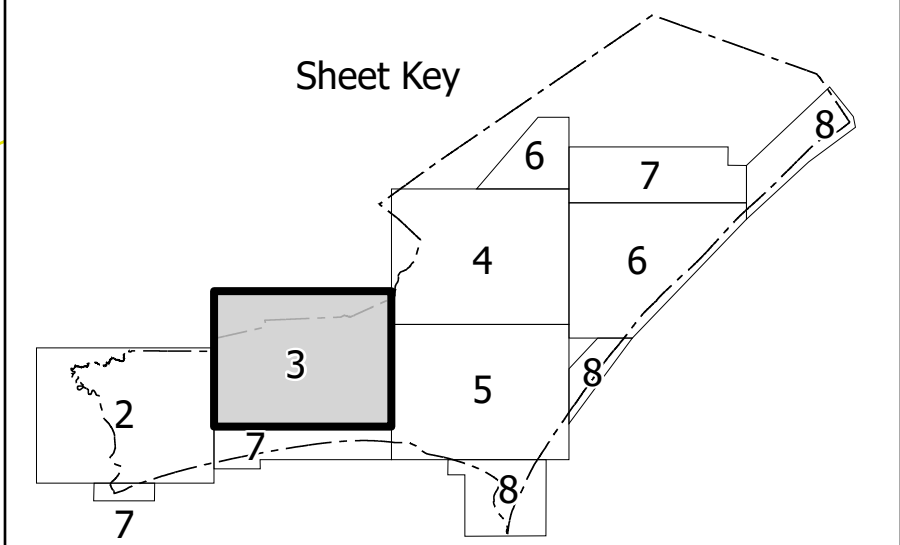
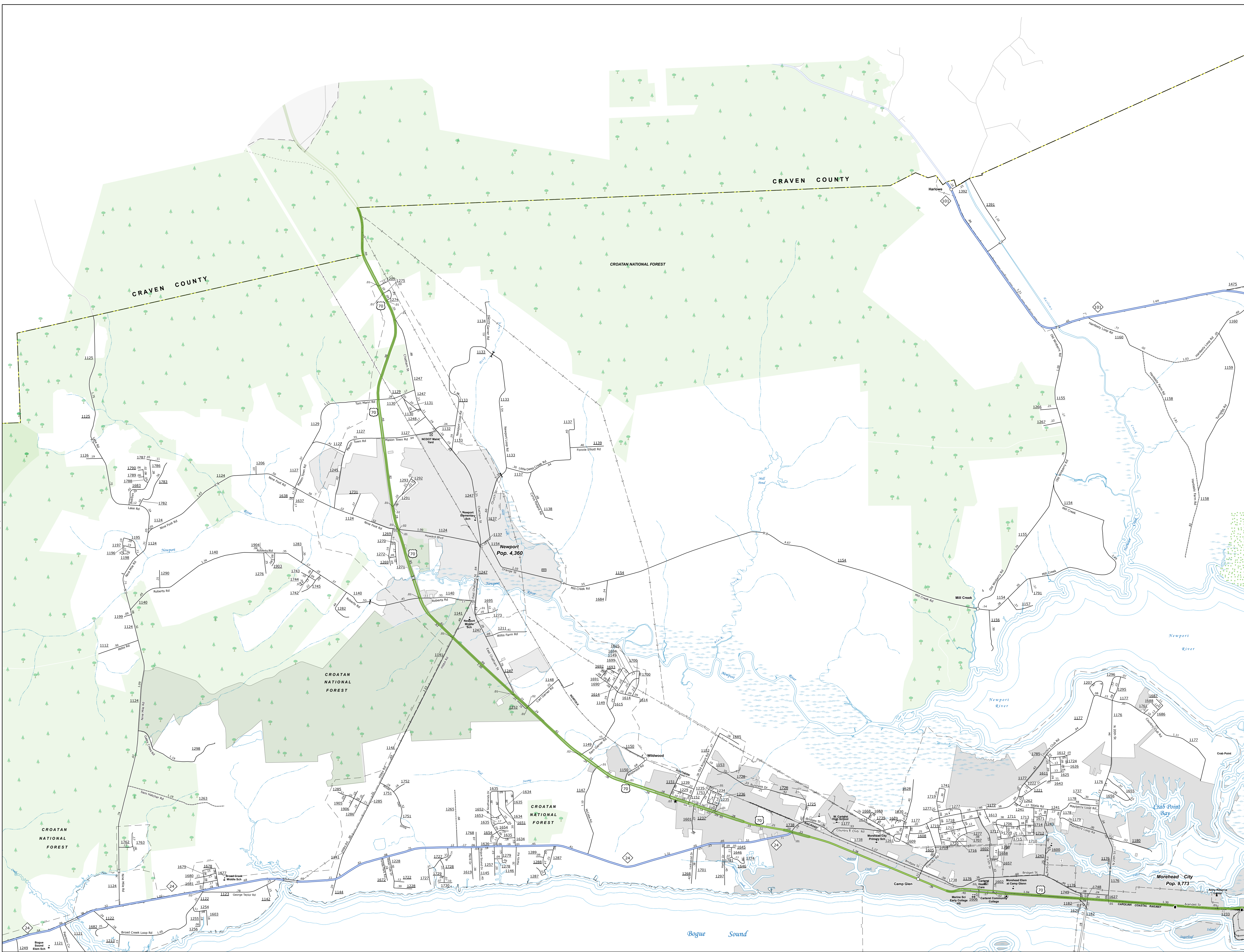
SCALE



NORTH CAROLINA PLANE COORDINATE SYSTEM
LAMBERT CONFORMAL CONIC PROJECTION

The Mapping Services Unit is to provide the most accurate and current information possible. Map data is compiled from numerous sources with varying dates of publication and map accuracy standards. As a result, the accuracy of the map cannot be guaranteed. The user is advised to use the map for general information only and not for navigation or other critical purposes. For additional information, visit <http://www.ncdot.gov> or call 1-800-368-6848.

COPIES OF THIS MAP ARE AVAILABLE TO THE PUBLIC AT NO CHARGE. This information is provided for informational purposes only. It is not intended to be used for navigation or other critical purposes. For additional information, visit <http://www.ncdot.gov> or call 1-800-368-6848.



LEGEND

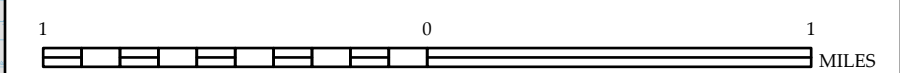
- INTERSTATE US NC Divided Hwy Undivided Hwy
- BLUE RIDGE PARKWAY
- CONCRETE-PAVED ROAD
- HARD SURFACED ROAD
- NON-SYSTEM ROAD
- PROPOSED LOCATION
- INTERSECTION DISTANCE
- STANDARD ROAD BRIDGE
- RAILROAD BRIDGE
- DRAW SPAN ON BRIDGE
- PEDESTRIAN BRIDGE
- PEDESTRIAN WALKWAY
- PEDESTRIAN UNDERPASS
- VEHICLE UNDERPASS
- TUNNEL
- CULVERT
- WYE
- INTERSTATE HIGHWAY
- U.S. NUMBERED HIGHWAY
- U.S. NUMBERED HIGHWAY
- U.S. NUMBERED BI-CYCLE ROUTE
- N.C. NUMBERED BI-CYCLE ROUTE
- INTERSTATE INTERCHANGE NUMBER
- SECONDARY ROAD NUMBER
- UTILITY LINES
- RAILROAD LINE
- RAILROAD STATION
- RAILROAD TUNNEL
- STATE LINE
- COUNTY LINE
- CITY LIMITS
- FERRY ROUTE
- NARROW CREEK OR STREAM
- WIDE RIVER OR CREEK
- RESERVOIR, POND OR LAKE W/ ISLAND
- DAM OR DAM WITH LEAK
- WATERFALL
- SWAMP
- COMMUNITY TOWN OR CITY CENTER
- COUNTY SEAT
- SCHOOL
- COLLEGE OR UNIVERSITY
- HOSPITAL
- COAST GUARD STATION
- CHURCH
- CHURCH WITH CEMETERY
- CEMETERY
- POSTAL STATION
- CORRECTIONAL INSTITUTION
- QUARRY
- WIND OR PWT
- HIGHWAY GARAGE OR MAINT. YARD
- ROADWAY DIV. OR DIST. OFFICE
- MILITARY POST
- WEIGH STATION
- HAZARDOUS
- HISTORICAL SITE
- POINT OF INTEREST
- STATE FOREST
- TOOTH BRUSH
- MOUNTAIN SUMMIT
- OVERLOOK
- REST AREA
- VISITOR CENTER AREA
- WELCOME CENTER AREA
- AIRPORT
- MILITARY AIRPORT
- WELCOMET
- NATIONAL STATE FOREST BOUNDARY
- WILDLIFE REFUGE
- NATIONAL STATE PARK BOUNDARY
- GAME LANDS BOUNDARY
- MILITARY RESERVATION BOUNDARY
- INDIAN RESERVATION BOUNDARY



CARTERET COUNTY
NORTH CAROLINA

PREPARED BY THE
NORTH CAROLINA DEPARTMENT OF TRANSPORTATION
OPERATIONS PROGRAM MANAGEMENT UNIT - MAPPING SECTION
IN COOPERATION WITH THE
U.S. DEPARTMENT OF TRANSPORTATION
FEDERAL HIGHWAY ADMINISTRATION

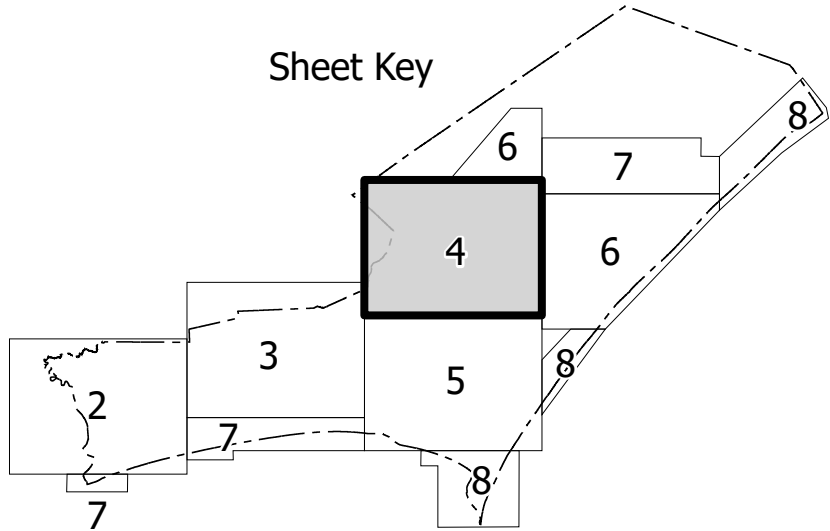
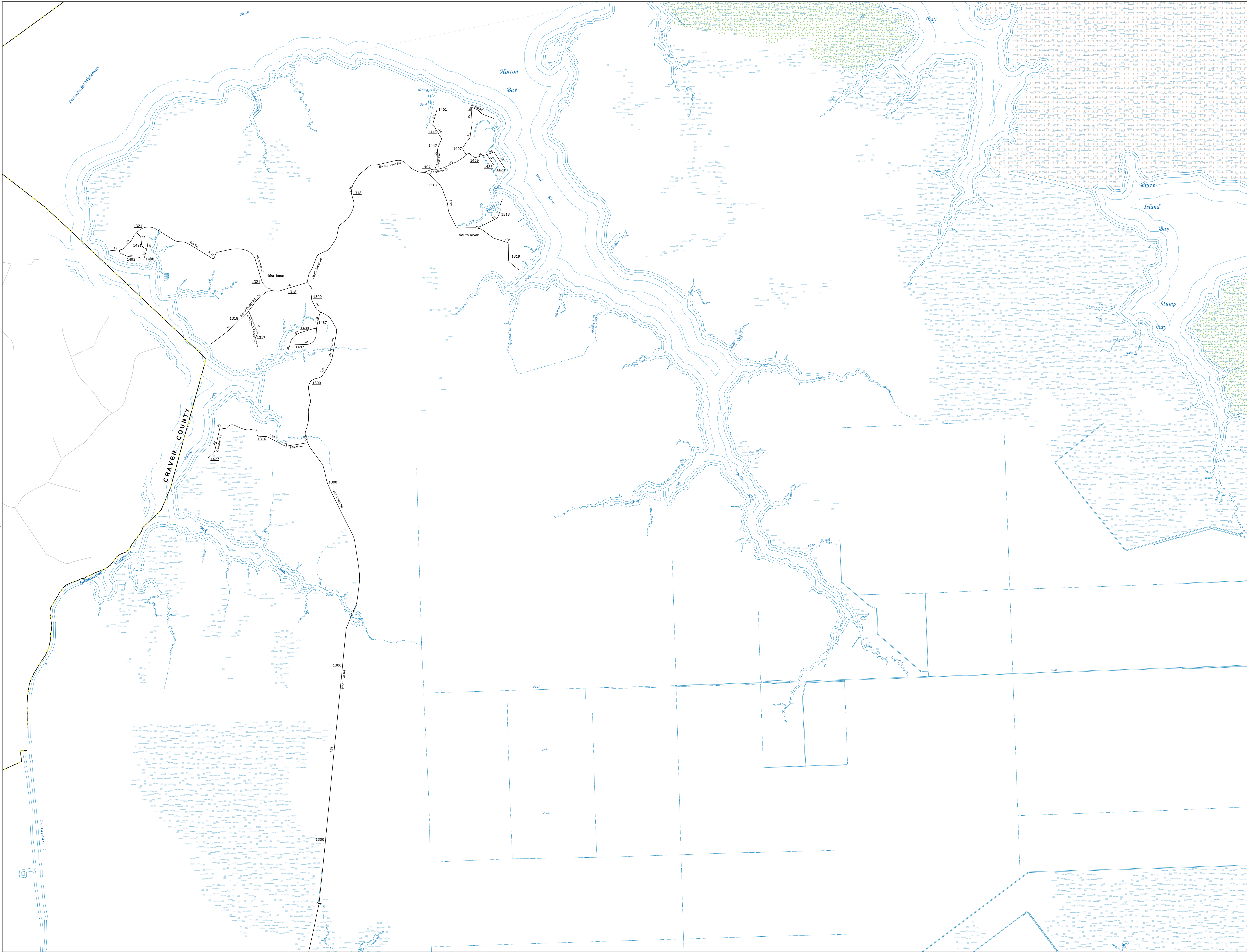
SCALE



NORTH CAROLINA PLANE COORDINATE SYSTEM
LAMBERT CONFORMAL CONIC PROJECTION

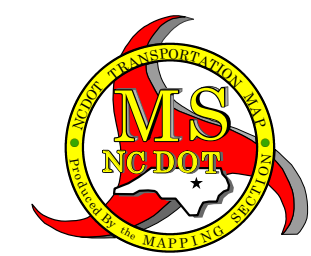
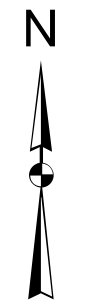
The Mapping Services Unit is to provide the most accurate and current information possible. Map data is compiled from numerous sources with varying dates of publication and map accuracy standards. As a result, the accuracy of the map cannot be guaranteed. Users are advised to use the map for general information only and not for navigation or other critical purposes. For additional information, visit <http://www.ncdot.gov> or call 1-800-368-6848.

COPIES OF THIS MAP ARE AVAILABLE TO THE PUBLIC AT NO CHARGE. FOR INFORMATION, CONTACT: Information@ncdot.gov or call 1-800-368-6848.



LEGEND

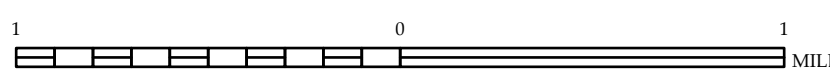
- INTERSTATE US NC Divided Hwy Undivided Hwy
- BLUE RIDGE PARKWAY
- CONCRETE-BRIDGED ROAD
- HARD SURFACED ROAD
- NON-SYSTEM ROAD
- PROVISIONALLY DRAWN ROAD
- PROJECTED LOCATION
- INTERSECTION DISTANCE
- STANDARD ROAD BRIDGE
- RAILROAD BRIDGE
- DRAW SPAN ON BRIDGE
- PEDESTRIAN BRIDGE
- PEDESTRIAN WALKWAY
- PEDESTRIAN UNDERPASS
- VEHICLE UNDERPASS
- TUNNEL
- CULVERT
- WYE
- INTERSTATE HIGHWAY
- U.S. NUMBERED HIGHWAY
- U.S. NUMBERED HIGHWAY
- U.S. NUMBERED BI-CYCLE ROUTE
- N.C. NUMBERED BI-CYCLE ROUTE
- INTERSTATE INTERCHANGE NUMBER
- SECONDARY ROAD NUMBER
- UTILITY LINES
- RAILROAD LINE
- RAILROAD STATION
- INLET AREA
- STATE LINE
- COUNTY LINE
- CITY LIMITS
- FERRY ROUTE
- NARROW CREEK OR STREAM
- WIDE RIVER OR CREEK
- RESERVOIR, POND OR LAKE W/ ISLAND
- DAM OR DAM WITH LAKE
- WATERFALL
- SWAMP
- CORPORATE TOWN OR CITY CENTER
- COUNTY SEAT
- SCHOOL
- COLLEGE OR UNIVERSITY
- HOSPITAL
- COAST GUARD STATION
- CHURCH
- CHURCH WITH CEMETERY
- CEMETERY
- DISTRICT STATION
- CORRECTION OR PENAL INSTITUTION
- QUARRY
- MINE OR PIT
- HIGHWAY GARAGE OR MAINT. YARD
- HIGHWAY DIV. OR DIST. OFFICE
- MILITARY POST
- WEIGH STATION
- PARAGLIDERS
- HISTORICAL SITE
- POINT OF INTEREST
- STATE FOREST
- LIGHT HOUSE
- MOUNTAIN SUMMIT
- OVERLOOK
- REST AREA
- VISITOR CENTER AREA
- WELCOME CENTER AREA
- AIRPORT
- MILITARY AIRPORT
- WILDLIFE
- NATIONAL STATE FOREST BOUNDARY
- WILDLIFE REFUGE
- NATIONAL STATE PARK BOUNDARY
- GAME LANDS BOUNDARY
- MILITARY RESERVATION BOUNDARY
- INDIAN RESERVATION BOUNDARY



CARTERET COUNTY NORTH CAROLINA

PREPARED BY THE
NORTH CAROLINA DEPARTMENT OF TRANSPORTATION
OPERATIONS PROGRAM MANAGEMENT UNIT - MAPPING SECTION
IN COOPERATION WITH THE
U.S. DEPARTMENT OF TRANSPORTATION
FEDERAL HIGHWAY ADMINISTRATION

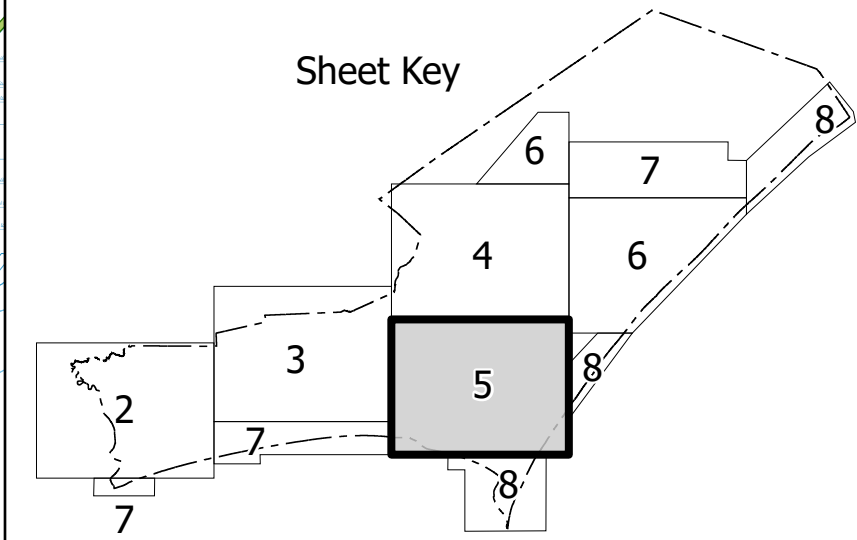
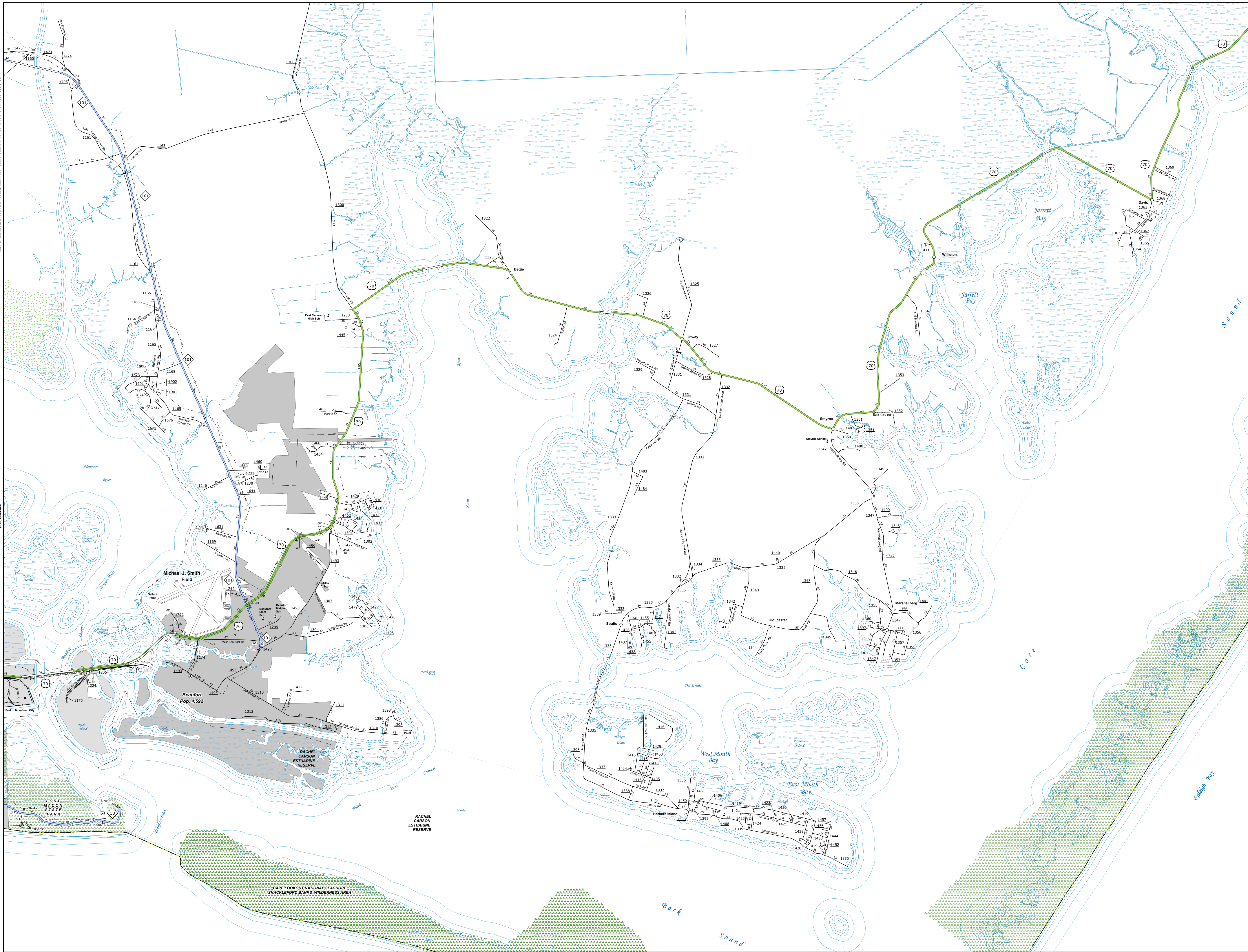
SCALE



NORTH CAROLINA PLANE COORDINATE SYSTEM
LAMBERT CONFORMAL CONIC PROJECTION

The Mapping Services Unit is to provide the most accurate and current information possible. Map data is compiled from numerous sources with varying dates of publication and map accuracy standards. A disclaimer of accuracy is provided on the map. The user is advised that the map is not to be used for legal purposes and that the user should consult the appropriate local government for more information.

COPIES OF THIS MAP ARE AVAILABLE TO THE PUBLIC AT NO CHARGE. FOR MORE INFORMATION, CONTACT THE NORTH CAROLINA DEPARTMENT OF TRANSPORTATION, OPERATIONS PROGRAM MANAGEMENT UNIT - MAPPING SECTION, 100 SOUTH PARKWAY, RALEIGH, NC 27601. PHONE: (919) 884-8800.



LEGEND

- INTERSTATE US NC Divided Hwy Undivided Hwy
- BLUE RIDGE PARKWAY
- UNIMPROVED/UNPAVED ROAD
- HIGHWAY RIGHT-OF-WAY
- NON-SYSTEM ROAD
- PROVISIONALLY DRAWN ROAD
- PROTECTED LOCATION
- INTERSECTION/STANDARD
- STANDARD ROAD BRIDGE
- RAILROAD BRIDGE
- DRAW SPAN ON BRIDGE
- PEDESTRIAN BRIDGE
- PEDESTRIAN WALKWAY
- PEDESTRIAN UNDERPASS
- VEHICLE UNDERPASS
- TUNNEL
- CULVERT
- WYE
- INTERSTATE HIGHWAY
- U.S. NUMBERED HIGHWAY
- U.S. NUMBERED HIGHWAY
- U.S. NUMBERED BIKEWAY ROUTE
- N.C. NUMBERED BIKEWAY ROUTE
- INTERSTATE INTERCHANGE NUMBER
- STATE ROAD NUMBER
- UTILITY LINES
- RAILROAD LINE
- RAILROAD STATION
- STATE LINE
- COUNTY LINE
- CITY LIMITS
- FERRY ROUTE
- NARROW CREEK OR STREAM
- WIDE RIVER OR CREEK
- RESERVOIR, POND OR LAKE W/ ISLAND
- DAM OR DAM WITH LAKE
- WATERFALL
- SWAMP
- COMMUNITY TOWN OR CITY CENTER
- COUNTY SEAT
- SCHOOL
- COLLEGE OR UNIVERSITY
- HOSPITAL
- COAST GUARD STATION
- CHURCH
- CHURCH WITH CEMETERY
- CEMETERY
- POLICE STATION
- CORRECTIONAL OR PENAL INSTITUTION
- QUARRY
- WIND OR PET
- HIGHWAY GARAGE OR MAINT. YARD
- ROADWAY DIV. OR DIST. OFFICE
- MILITARY POST
- WEIGH STATION
- FOREIGN BOUNDARY
- HISTORICAL SITE
- POINT OF INTEREST
- STATE FOREST
- LOOKOUT
- MOUNTAIN SUMMIT
- OVERLOOK
- REST AREA
- VISITOR CENTER AREA
- WELCOME CENTER AREA
- AIRPORT
- MILITARY AIRPORT
- WILDLIFE REFUGE
- NATIONAL STATE PARK BOUNDARY
- GAME LANDS BOUNDARY
- MILITARY RESERVATION BOUNDARY
- INDIAN RESERVATION BOUNDARY



CARTERET COUNTY NORTH CAROLINA

PREPARED BY THE
NORTH CAROLINA DEPARTMENT OF TRANSPORTATION
OPERATIONS PROGRAM MANAGEMENT UNIT - MAPPING SECTION
IN COOPERATION WITH THE
U.S. DEPARTMENT OF TRANSPORTATION
FEDERAL HIGHWAY ADMINISTRATION

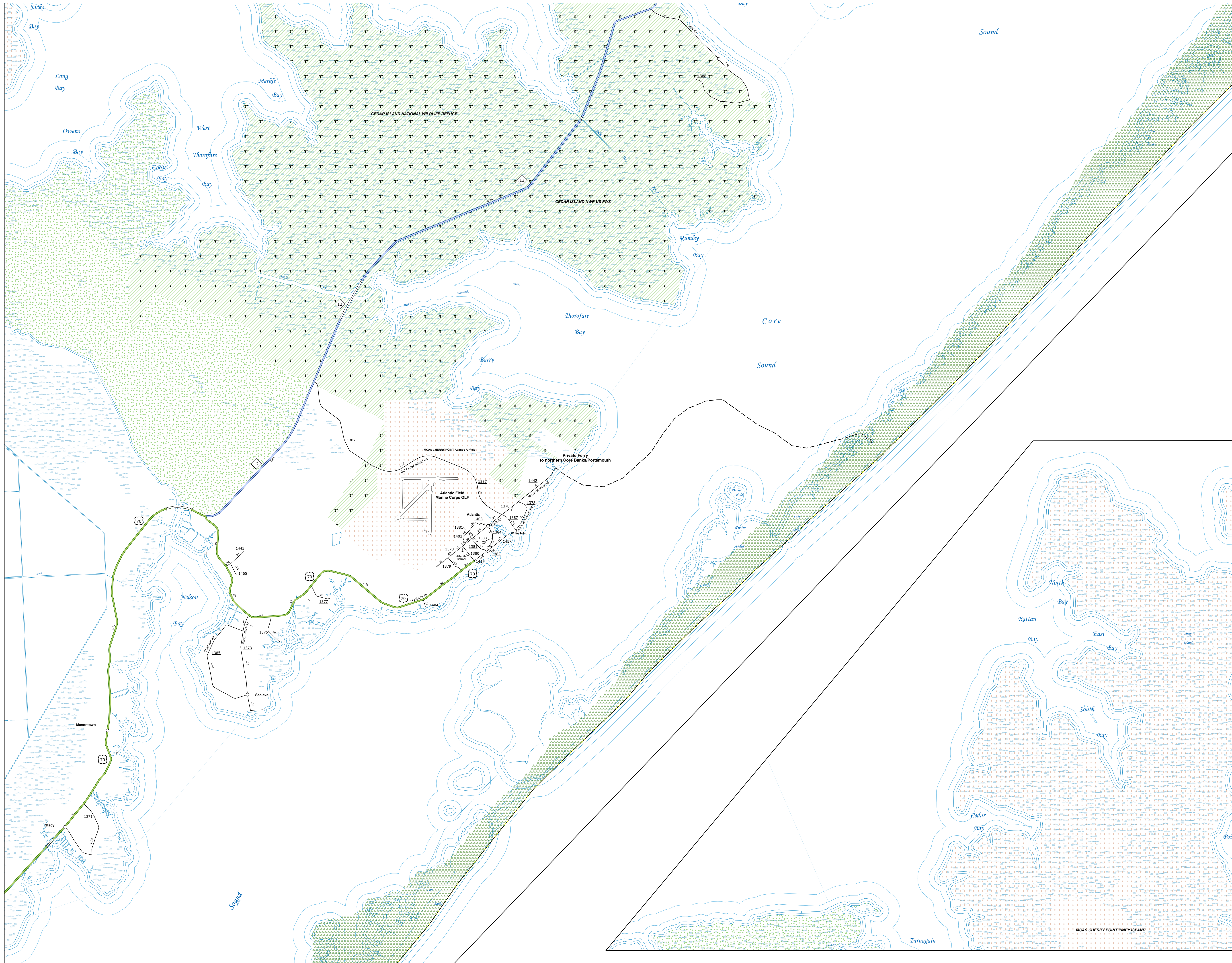
SCALE



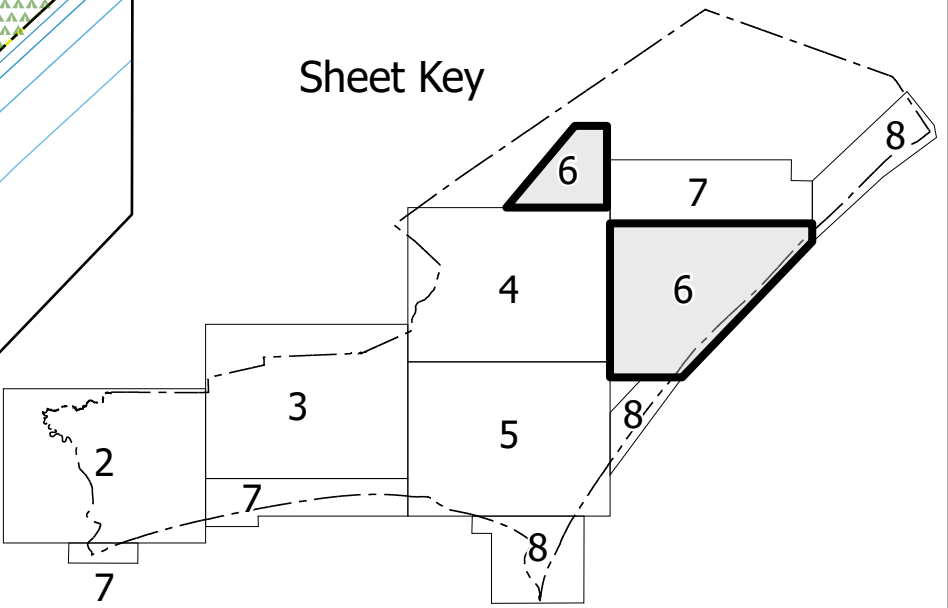
NORTH CAROLINA PLANE COORDINATE SYSTEM
LAMBERT CONFORMAL CONIC PROJECTION

COPIES OF THIS MAP ARE AVAILABLE
TO THE PUBLIC AT NOMINAL COST:

mapping.support@nodot.gov
https://connect.nodot.gov/resources/
State-Mapping/Pages/Ordering-Maps.aspx
(919) 834-8490



Sheet Key



LEGEND

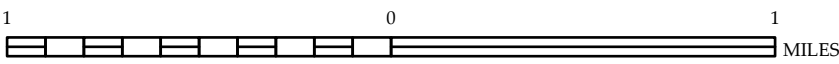
- [illegible]



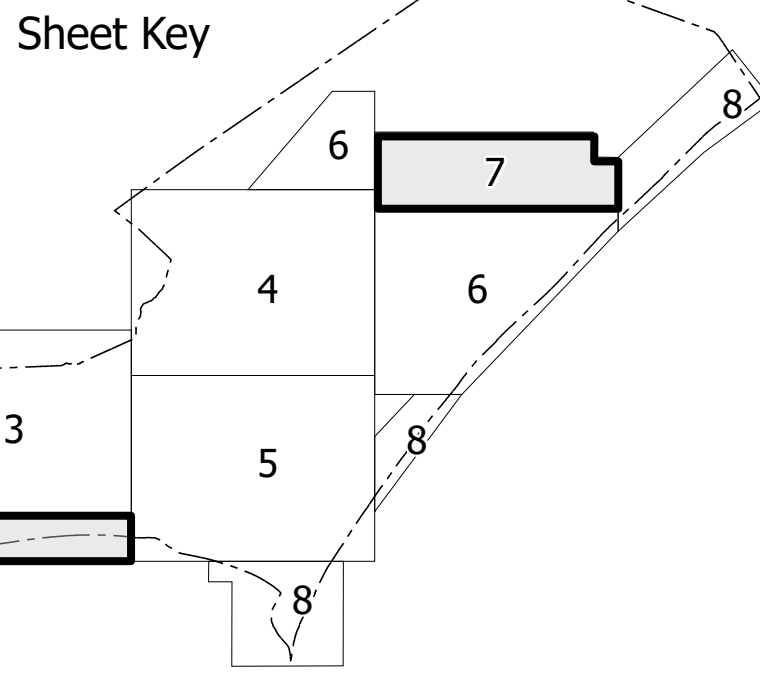
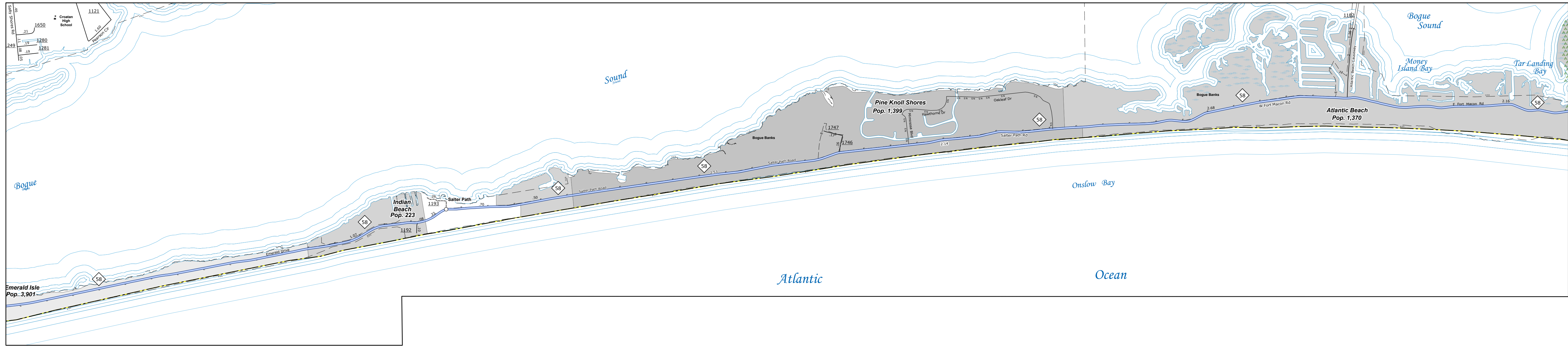
CARTERET COUNTY
NORTH CAROLINA

PREPARED BY THE
NORTH CAROLINA DEPARTMENT OF TRANSPORTATION
OPERATIONS PROGRAM MANAGEMENT UNIT - MAPPING SECTION
IN COOPERATION WITH THE
U.S. DEPARTMENT OF TRANSPORTATION
FEDERAL HIGHWAY ADMINISTRATION

SCALE

NORTH CAROLINA PLANE COORDINATE SYSTEM
LAMBERT CONFORMAL CONIC PROJECTION

COPIES OF THIS MAP ARE AVAILABLE
AT A PUBLIC AT NOMINAL COST:
mappingsupport@nodot.gov
<https://connect.nodot.gov/resources>
State-Mapping/Pages/Ordering-Ma
(019) 834-8490



-

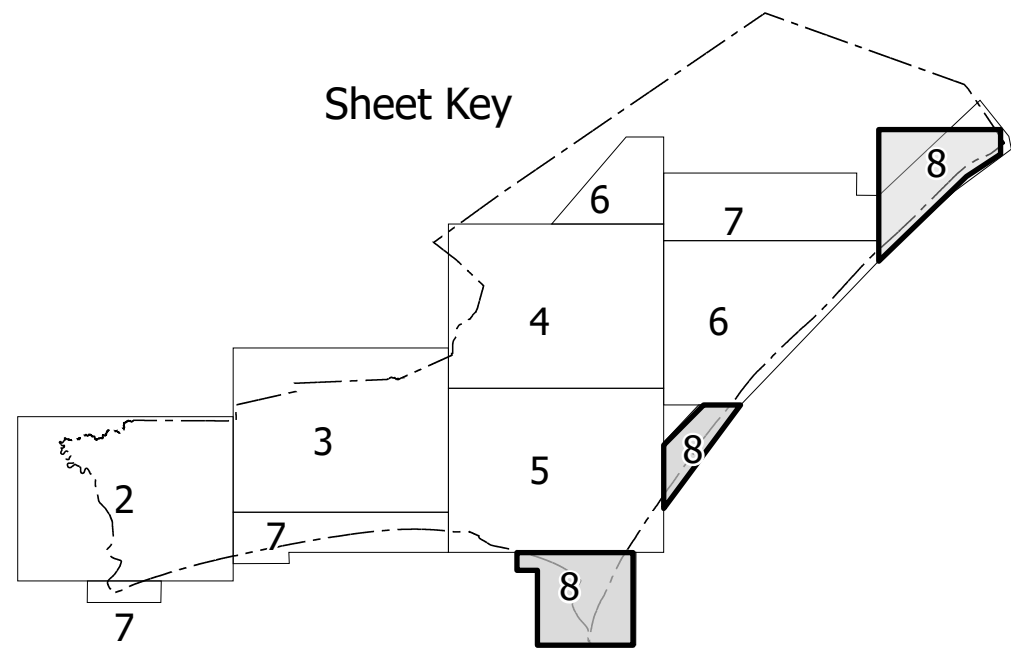
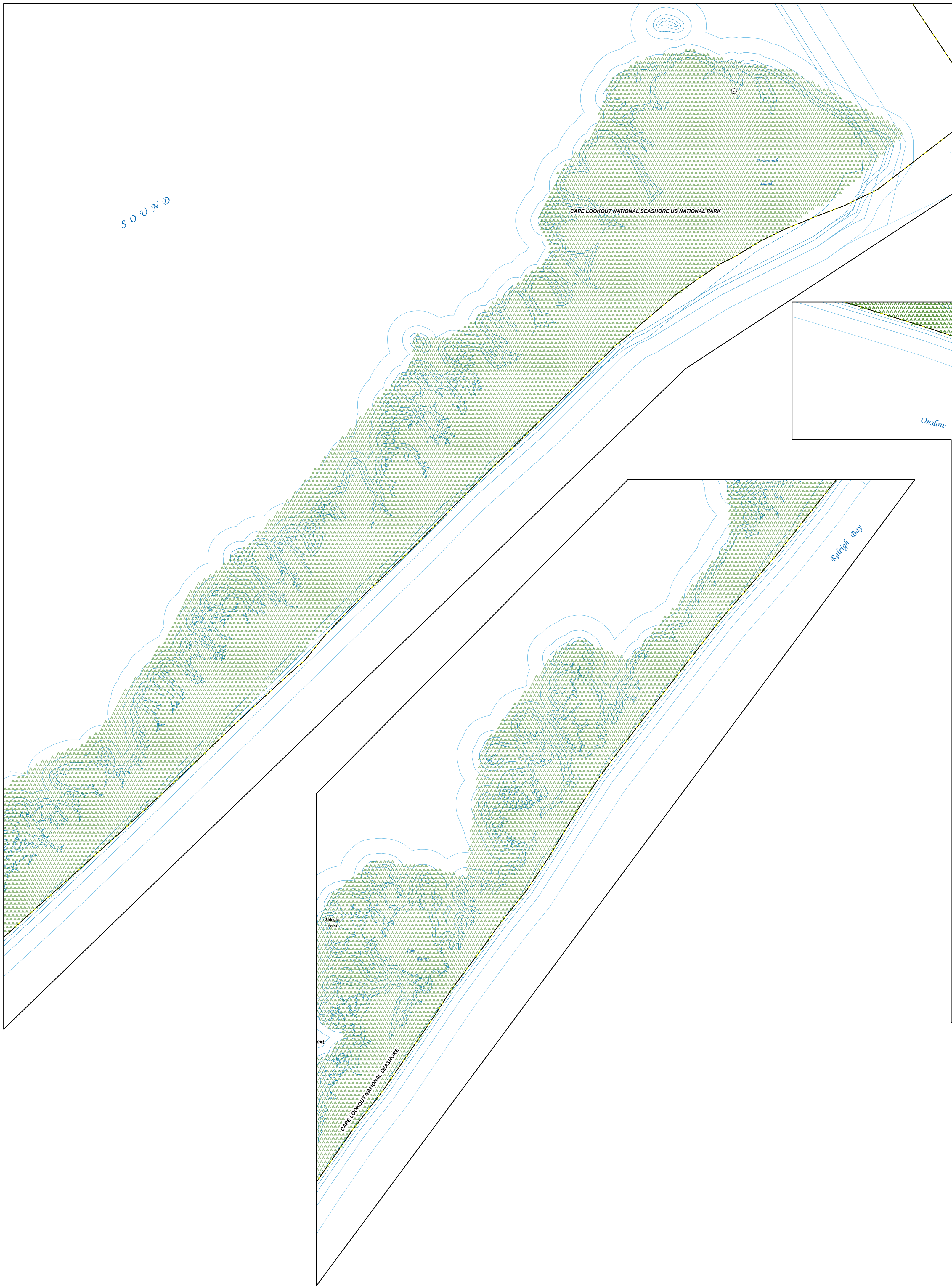
PREPARED BY THE
NORTH CAROLINA DEPARTMENT OF TRANSPORTATION
OPERATIONS PROGRAM MANAGEMENT UNIT - MAPPING SECTION
IN COOPERATION WITH THE
U.S. DEPARTMENT OF TRANSPORTATION
FEDERAL HIGHWAY ADMINISTRATION

SCALE

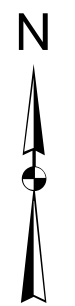


The Mapping Section's goal is to provide the most accurate and current information possible. Map data is compiled from a variety of sources, including aerial photography, ground surveys, and other data. The map is a compilation of current and historical data. The information shown on this map was last updated in July 2023. For additional information, visit <https://www.ncdot.gov/Mapping/Pages/ContactUs.aspx>. The information shown on this map was last updated in July 2023. For additional information, visit <https://www.ncdot.gov/Mapping/Pages/ContactUs.aspx>. The information shown on this map was last updated in July 2023. For additional information, visit <https://www.ncdot.gov/Mapping/Pages/ContactUs.aspx>.

COPYRIGHT © 2023 BY NC DOT. ALL RIGHTS RESERVED. TO THE PUBLIC AT NO MINOR COST. mapping@ncdot.gov or <https://www.ncdot.gov/Mapping/Pages/ContactUs.aspx> (877) 684-6463



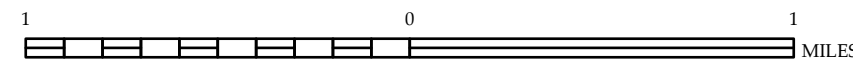
- LEGEND
- INTERSTATE US NC Divided Hwy Undivided Hwy
 - BLVD BRIDGE PARKWAY
 - UNIMPAVED DRIVE/PRIVATE ROAD
 - HARD SURFACED ROAD
 - NON-UTILITY ROAD
 - PROVISIONALLY DRAWN ROAD
 - PROJECTED LOW WATER
 - INTERSECTION DISTANCE
 - STANDARD ROAD BRIDGE
 - RAILROAD BRIDGE
 - CRAN SPAN ON BRIDGE
 - PEDESTRIAN BRIDGE
 - PEDESTRIAN WALKWAY
 - PEDESTRIAN UNDERPASS
 - VEHICULAR UNDERPASS
 - TUNNEL
 - CUT/VERT
 - PPP
 - INTERSTATE HIGHWAY
 - US NUMBERED HIGHWAY
 - NC NUMBERED HIGHWAY
 - US NUMBERED BICYCLE ROUTE
 - NC NUMBERED BICYCLE ROUTE
 - INTERSTATE INTERCHANGE NUMBER
 - SECONDARY ROAD NUMBER
 - UTILITY LINE
 - RAILROAD LINE
 - POST AREA
 - STATE LINE
 - COUNTY LINE
 - CITY LIMITS
 - FERRY ROUTE
 - NARROW CREEK OR STREAM
 - WIDE RIVER OR CREEK
 - RESERVOIR, POND OR LAKE W/ ISLAND
 - DAM OR DAM WITH LOCK
 - WATERFALL
 - SWAMP
 - COUNTY SEAT
 - SCHOOL
 - COLLEGE OR UNIVERSITY
 - HOSPITAL
 - COAST GUARD STATION
 - CHURCH
 - CHURCH WITH CEMETERY
 - CEMETERY
 - PATROL STATION
 - CORRECTION OR PENAL INSTITUTION
 - QUARRY
 - MINE OR PIT
 - HIGHWAY GARAGE OR MAINT YARD
 - DRIVING DIV/REST OFFICE
 - MILITARY POST
 - WORK STATION
 - FARMHOUSES
 - HISTORICAL SITE
 - POINTS OF INTEREST
 - STATE FOREST
 - LIGHTHOUSE
 - MOUNTAIN SUMMIT
 - OVERLOOK
 - BEST AREA
 - VISITOR CENTER AREA
 - WELCOME CENTER AREA
 - AIRPORT
 - MILITARY AIRPORT
 - HELIPORT
 - NATIONAL STATE FOREST BOUNDARY
 - WILDLIFE REFUGE
 - NATIONAL STATE PARK BOUNDARY
 - GAME LANDS BOUNDARY
 - MILITARY RESERVATION BOUNDARY
 - INDIAN RESERVATION BOUNDARY



CARTERET COUNTY NORTH CAROLINA

PREPARED BY THE
NORTH CAROLINA DEPARTMENT OF TRANSPORTATION
OPERATIONS PROGRAM MANAGEMENT UNIT - MAPPING SECTION
IN COOPERATION WITH THE
U.S. DEPARTMENT OF TRANSPORTATION
FEDERAL HIGHWAY ADMINISTRATION

SCALE



NORTH CAROLINA PLANE COORDINATE SYSTEM
LAMBERT CONFORMAL CONIC PROJECTION