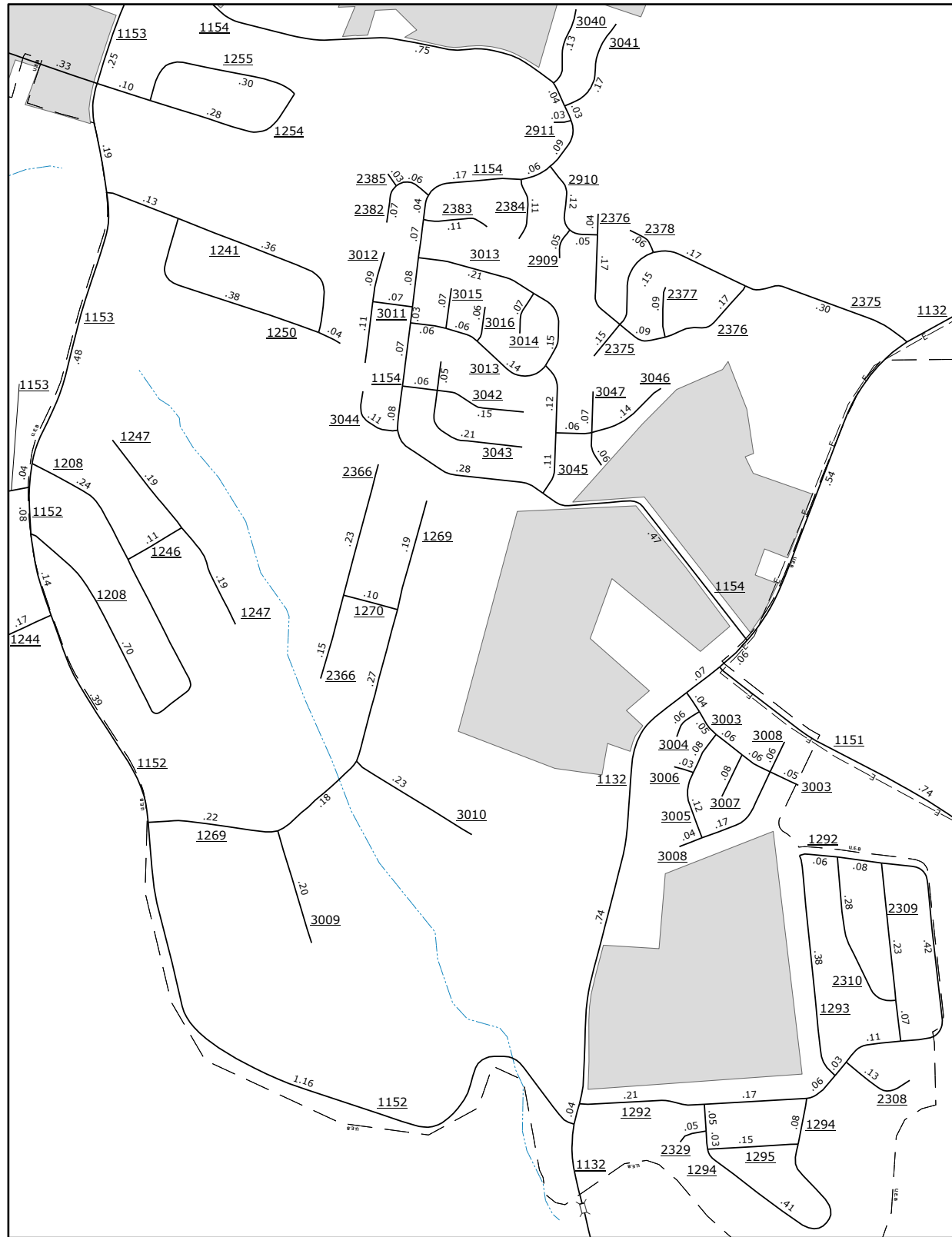
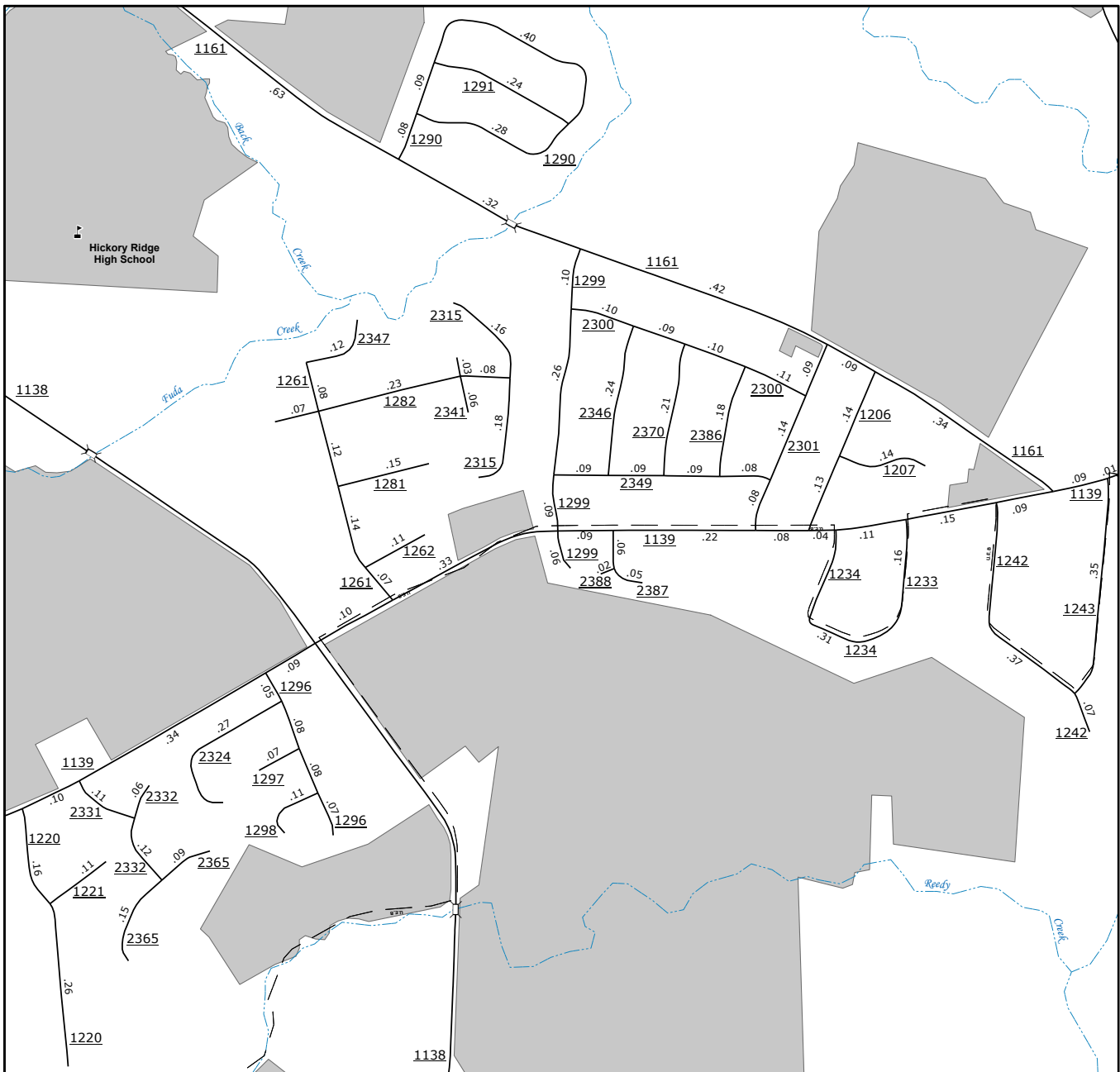


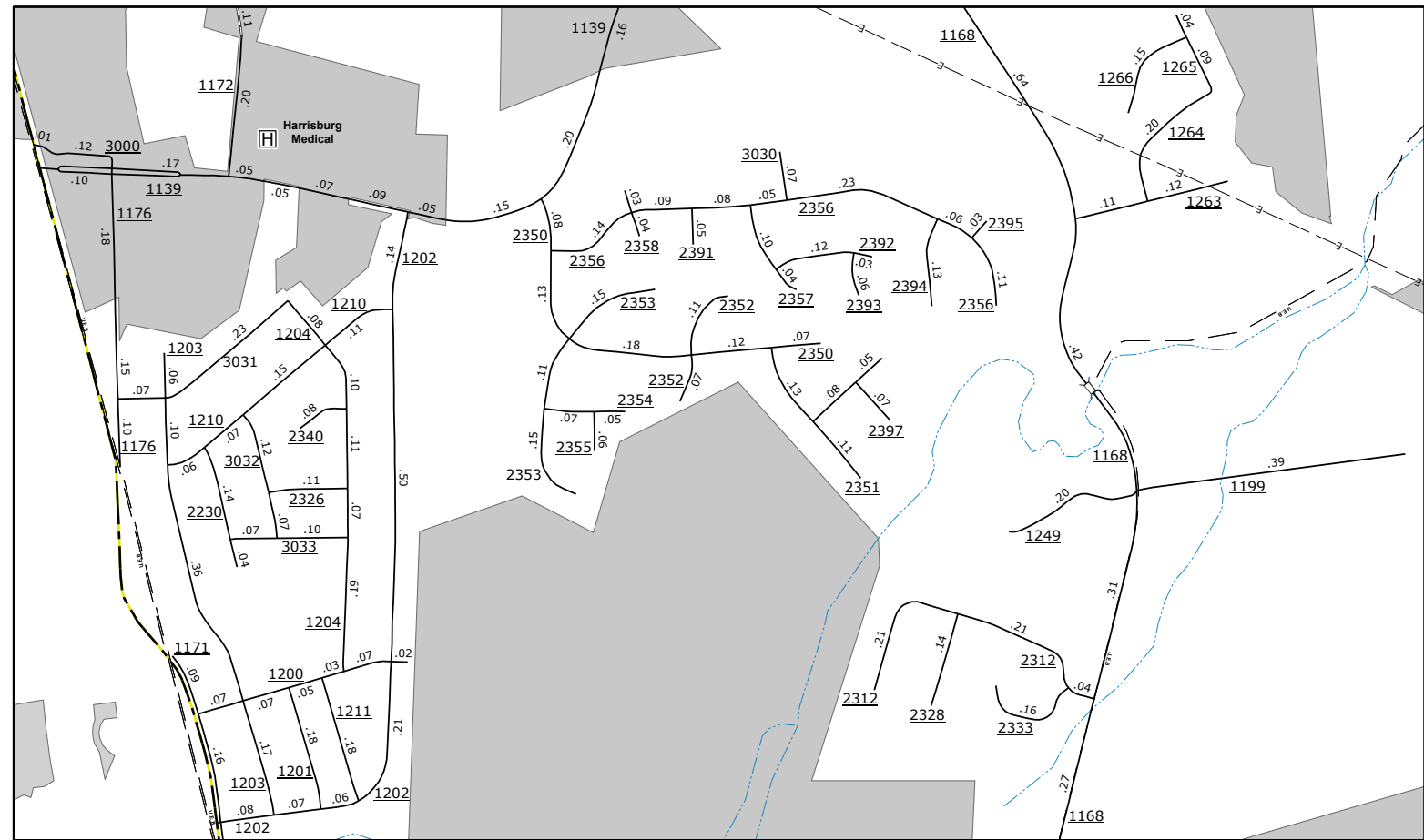
Charlie Walker Road



Flowes Store Road



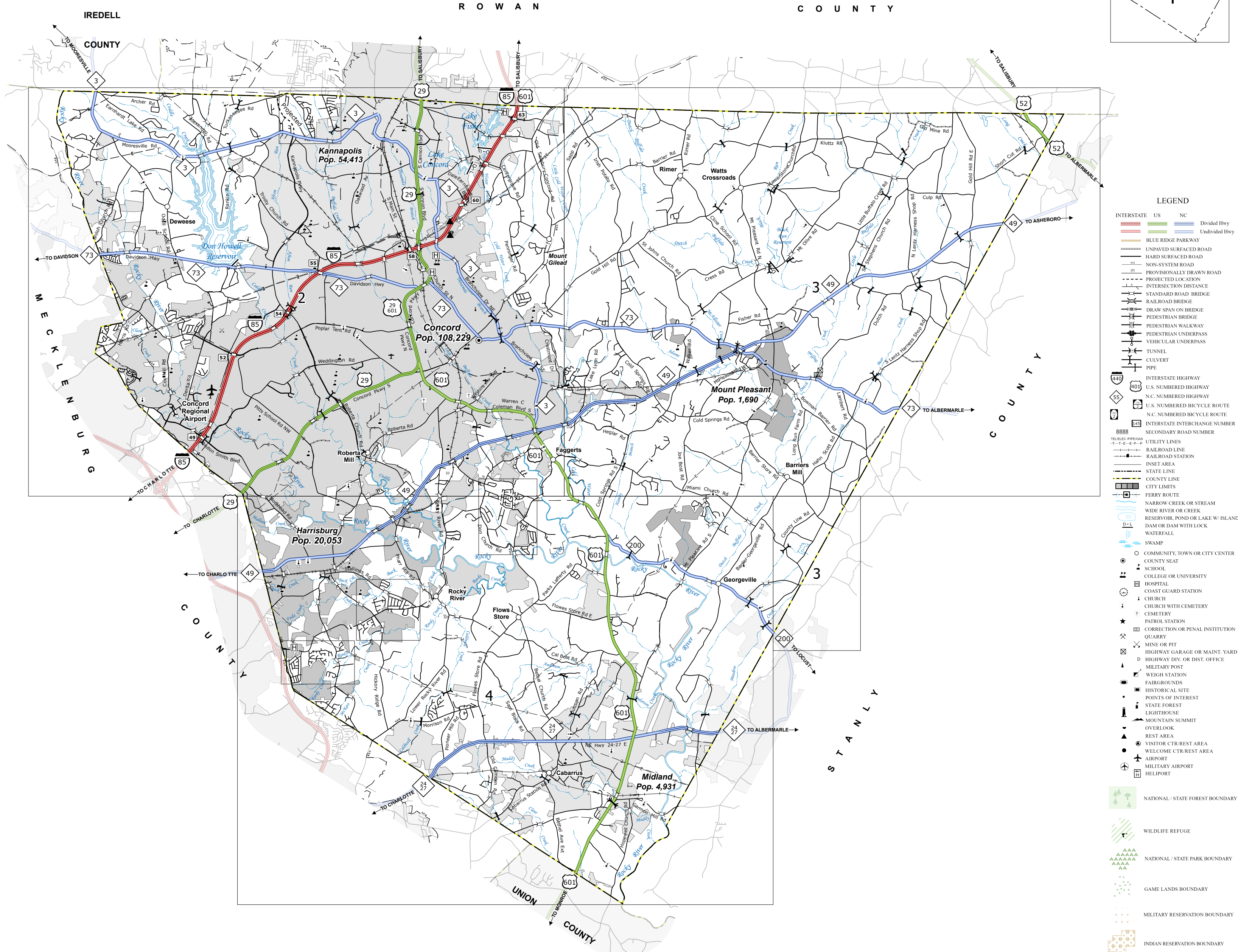
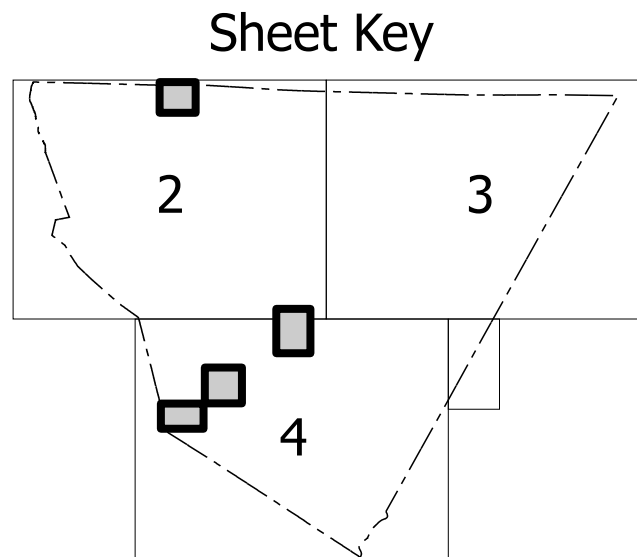
Hickory Ridge



Bradford Park

COPIES OF THIS MAP ARE AVAILABLE TO THE PUBLIC AT NOMINAL COST:  
mapping@ncdot.gov  
https://www.ncdot.gov/resources/State-Mapping/Pages/Ordering-Maps.aspx  
(919) 834-4440

The Mapping Section's goal is to provide the most accurate and current information possible. Map data is compiled from numerous sources with varying dates of publication and map accuracy standards. As a result, the accuracy, currency, and completeness of the data provided will vary. This map includes state-maintained roads and important non-system roads.  
The information shown on this map was last updated in July 2023. For additional information, visit <https://www.ncdot.gov/transportation/mapping/> and click on Data Providers or contact us by phone at (919) 834-4440.



- LEGEND**
- INTERSTATE: US, NC, Divided Hwy, Undivided Hwy
  - BLUE RIDGE PARKWAY
  - UNPAVED SUBDIVIDED ROAD
  - ROAD SERVICE ROAD
  - NON-SYSTEM ROAD
  - PROPOSED/PLANNED ROAD
  - PROTECTED LOCATION
  - INTERSECTION
  - STANDARD ROAD BRIDGE
  - RAILROAD BRIDGE
  - BRIDGE SPAN ON BRIDGE
  - PEDESTRIAN BRIDGE
  - PEDESTRIAN UNDERPASS
  - VEHICULAR UNDERPASS
  - TUNNEL
  - CULVERT
  - INTERSTATE HIGHWAY
  - U.S. NUMBERED HIGHWAY
  - U.S. NUMBERED HIGHWAY
  - U.S. NUMBERED BI-CYCLE ROUTE
  - U.S. NUMBERED BI-CYCLE ROUTE
  - INTERSTATE INTERCHANGE NUMBER
  - SECONDARY ROAD NUMBER
  - UTILITY LINES
  - RAILROAD LINE
  - RAILROAD STATION
  - RAILROAD LINE
  - RAILROAD STATION
  - CITY LIMITS
  - CITY LIMITS
  - FERRY ROUTE
  - NARROW GULCH OR STREAM
  - WIDE RIVER OR CREEK
  - RESERVOIR, POND OR LAKE W/ ISLAND
  - DAM OR DAM WITH LOCK
  - WATERFALL
  - SWAMP
  - COMMUNITY, TOWN OR CITY CENTER
  - COUNTY SEAT
  - SCHOOL
  - COLLEGE OR UNIVERSITY
  - HOSPITAL
  - COAST GUARD STATION
  - CHURCH
  - CHURCH WITH CEMETERY
  - CEMETERY
  - POLICE STATION
  - CORRECTION OR PENAL INSTITUTION
  - CLUBHOUSE
  - MINE OR PIT
  - HIGHWAY GARAGE OR MAINT. YARD
  - MILITARY POST
  - WEIGH STATION
  - FARMLANDS
  - HISTORICAL SITE
  - POINTS OF INTEREST
  - STATE FOREST
  - LIGHTHOUSE
  - MOUNTAIN SUMMIT
  - OVERLOOK
  - REST AREA
  - VISITOR CENTER AREA
  - WELCOME CENTER AREA
  - AIRPORT
  - MILITARY AIRPORT
  - HELIPORT
  - NATIONAL / STATE FOREST BOUNDARY
  - WILDLIFE REFUGE
  - NATIONAL / STATE PARK BOUNDARY
  - GAME LANDS BOUNDARY
  - MILITARY RESERVATION BOUNDARY
  - INDIAN RESERVATION BOUNDARY

**CABARRUS COUNTY NORTH CAROLINA**

PREPARED BY THE  
NORTH CAROLINA DEPARTMENT OF TRANSPORTATION  
OPERATIONS PROGRAM MANAGEMENT UNIT - MAPPING SECTION  
IN COOPERATION WITH THE  
U.S. DEPARTMENT OF TRANSPORTATION  
FEDERAL HIGHWAY ADMINISTRATION

SCALE  
1 0 1 2 3 4  
MILES

SCALE FOR ENLARGEMENTS  
0 0.5  
MILES

NORTH CAROLINA PLANE COORDINATE SYSTEM  
LAMBERT CONFORMAL CONIC PROJECTION

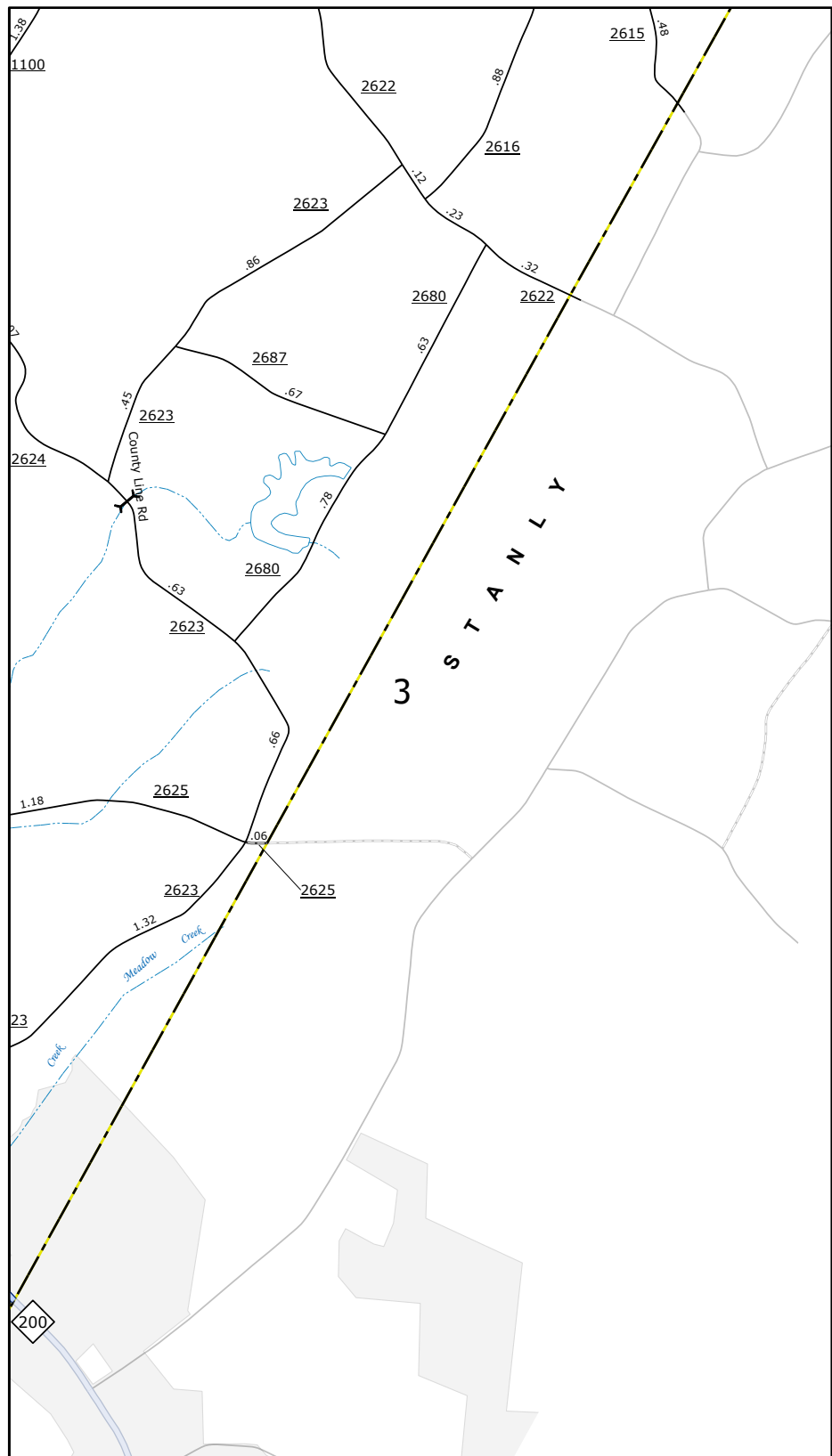
DIVISION 10 DISTRICT 1 CABARRUS COUNTY NORTH CAROLINA FIPS 025







COPIES OF THIS MAP ARE AVAILABLE  
TO THE PUBLIC AT NOMINAL COST:

[illegible]

0 0.5  
MILES

NORTH CAROLINA PLANE COORDINATE SYSTEM  
LAMBERT CONFORMAL CONIC PROJECTION



COPIES OF THIS MAP ARE AVAILABLE  
TO THE PUBLIC AT NOMINAL COST:  
mappingsupport@nodot.gov  
<https://connect.nodot.gov/newsroom/state-mapping/Pages/Ordering-Maps.aspx>  
(919) 834-3480

