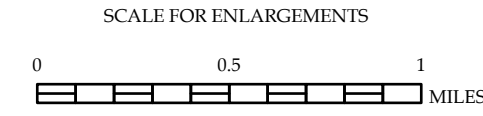
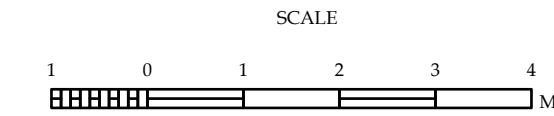


- LEGEND
- INTERSTATE US NC Divided Hwy Undivided Hwy
 - UNPAVED SURFACED ROAD
 - ROAD SURFACED ROAD
 - NON-SYSTEM ROAD
 - PROVISIONALLY DRAWN ROAD
 - PROJECTED LOCATION
 - INTERSECTION DISTANCE
 - STANDARD ROAD BRIDGE
 - RAILROAD BRIDGE
 - DRAW SPAN ON BRIDGE
 - PEDESTRIAN BRIDGE
 - PEDESTRIAN WALKWAY
 - VEHICULAR UNDERPASS
 - TUNNEL
 - CULVERT
 - PPE
 - INTERSTATE HIGHWAY
 - U.S. NUMBERED HIGHWAY
 - U.S. NUMBERED BICYCLE ROUTE
 - INTERSTATE INTERCHANGE NUMBER
 - SECONDARY ROAD NUMBER
 - UTILITY LINES
 - RAILROAD LINE
 - RAILROAD STATION
 - ISSET AREA
 - STATE LINE
 - COUNTY LINE
 - CITY LIMITS
 - FIREY ROUTE
 - NARROW CREEK OR STREAM
 - WIDE RIVER OR CREEK
 - RESERVOIR, POND OR LAKE W/ ISLAND
 - DAM OR DAM WITH LOCK
 - WATERFALL
 - SWAMP
 - COMMUNITY
 - COUNTY SEAT
 - SCHOOL
 - COLLEGE OR UNIVERSITY
 - HOSPITAL
 - COAST GUARD STATION
 - CHURCH
 - CHURCH WITH CEMETERY
 - CEMETERY
 - PATROL STATION
 - CORRECTION OR PENAL INSTITUTION
 - QUARRY
 - MINE OR PIT
 - HIGHWAY GARAGE OR MAINT. YARD
 - BIWAYWAY DIV. OR DIST. OFFICE
 - MILITARY POST
 - WEIGH STATION
 - FARMS
 - HISTORICAL SITE
 - POINTS OF INTEREST
 - LIGHTHOUSE
 - MOUNTAIN SUMMIT
 - OVERLOOK
 - REST AREA
 - VISITOR CTR. REST AREA
 - WELCOME CTR. REST AREA
 - AIRPORT
 - MILITARY AIRPORT
 - HELIPORT
 - NATIONAL / STATE FOREST BOUNDARY
 - WILDLIFE REFUGE
 - NATIONAL / STATE PARK BOUNDARY
 - GAME LANDS BOUNDARY
 - MILITARY RESERVATION BOUNDARY
 - INDIAN RESERVATION BOUNDARY



ALAMANCE COUNTY NORTH CAROLINA

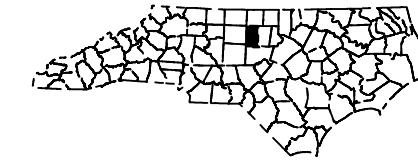
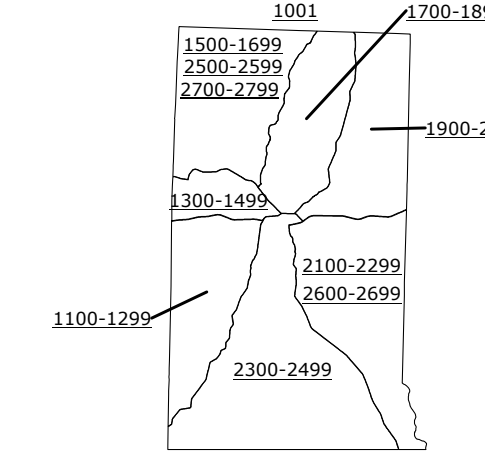
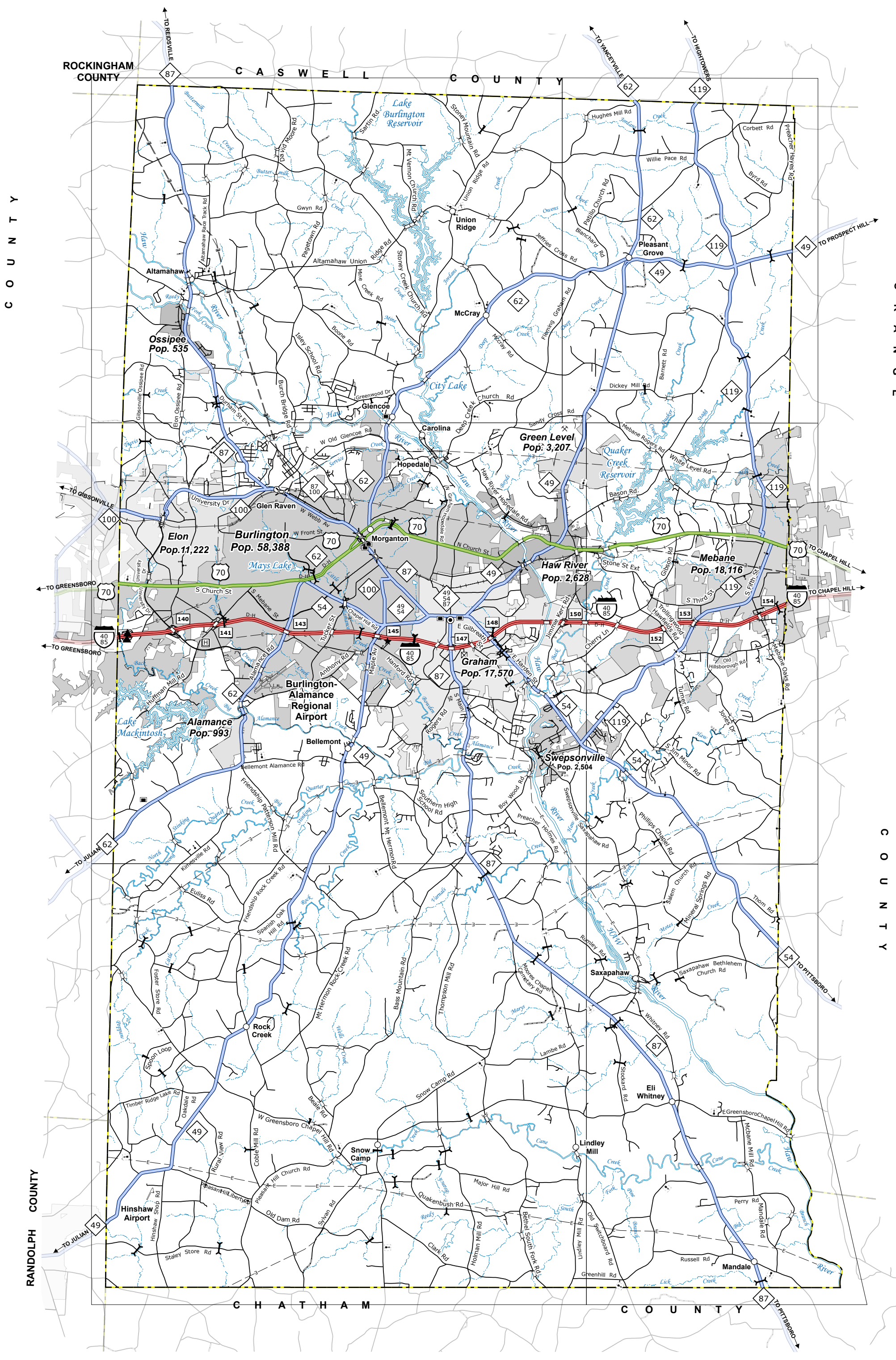
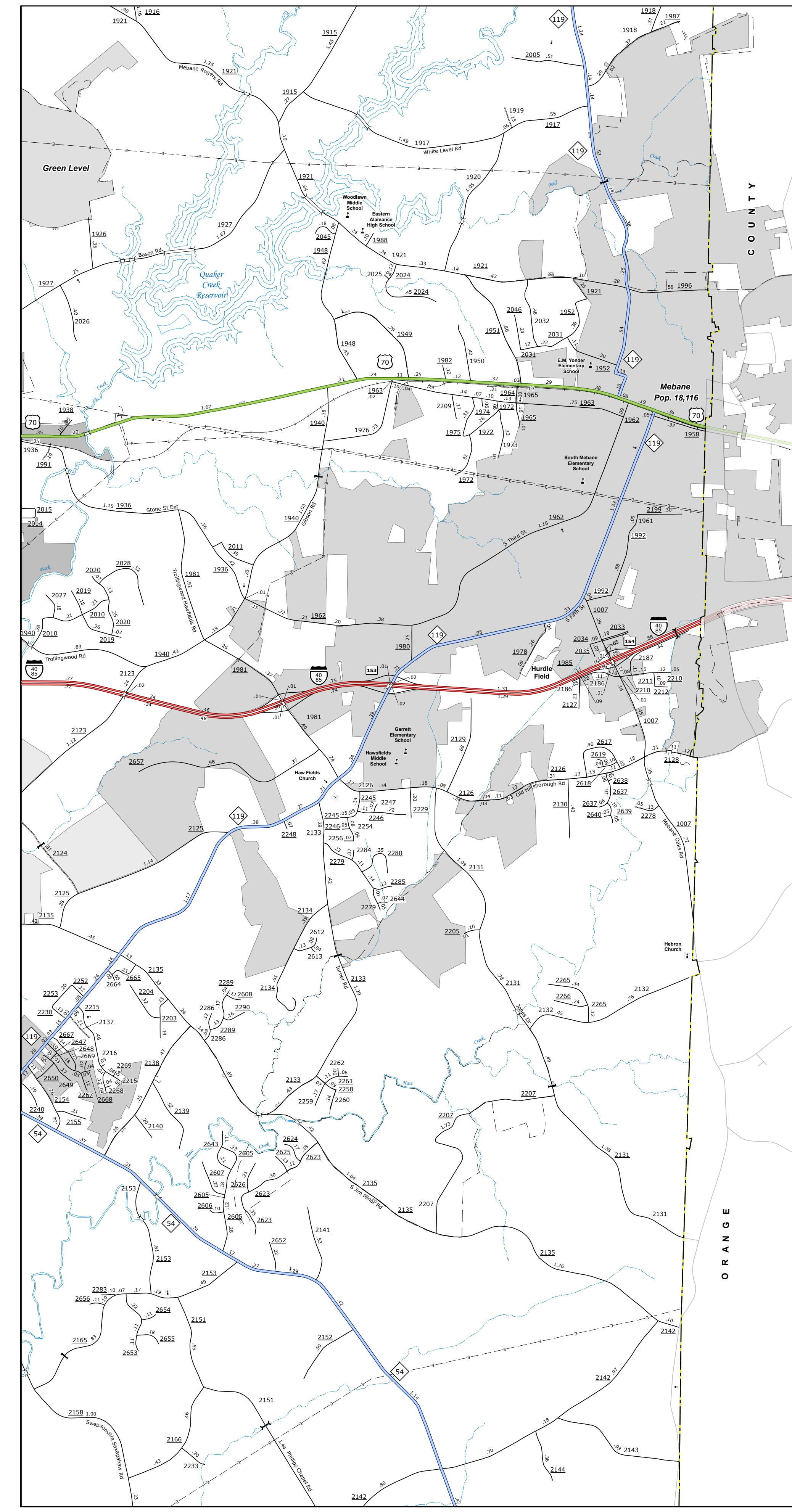
PREPARED BY THE
NORTH CAROLINA DEPARTMENT OF TRANSPORTATION
OPERATIONS PROGRAM MANAGEMENT UNIT - MAPPING SECTION
IN COOPERATION WITH THE
U.S. DEPARTMENT OF TRANSPORTATION
FEDERAL HIGHWAY ADMINISTRATION



NORTH CAROLINA PLANE COORDINATE SYSTEM
LAMBERT CONFORMAL CONIC PROJECTION

SHEET 1 OF 6

ALAMANCE COUNTY NORTH CAROLINA FIPS 001



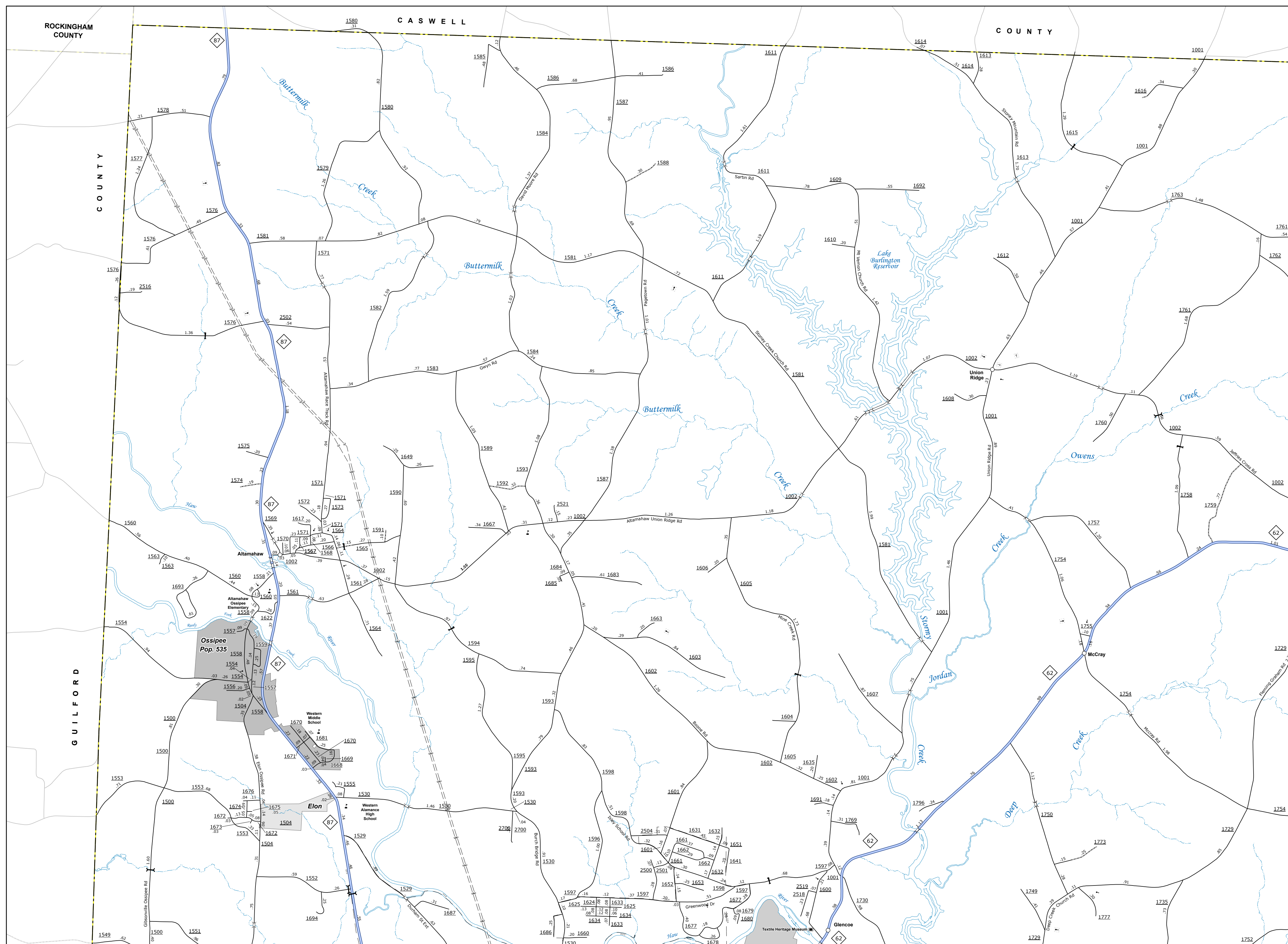
COPIES OF THIS MAP ARE AVAILABLE
TO THE PUBLIC AT NOMINAL COST:
mapping@ncdot.gov
https://www.ncdot.gov/resources/
State-Mapping/Pages/Ordering-Maps.aspx
(919) 834-4440

The Mapping Section's goal is to provide the most accurate and current information possible. Map data is compiled from numerous sources with varying dates of publication and map accuracy standards. As a result, the accuracy, currency, and completeness of the data provided will vary. This map includes state-maintained roads and important non-system roads. The information shown on this map was last updated in May 2023. For additional information, visit <http://www.ncdot.gov/transportation/mapping> and click on Data Providers or contact us by phone at (919) 834-4440.

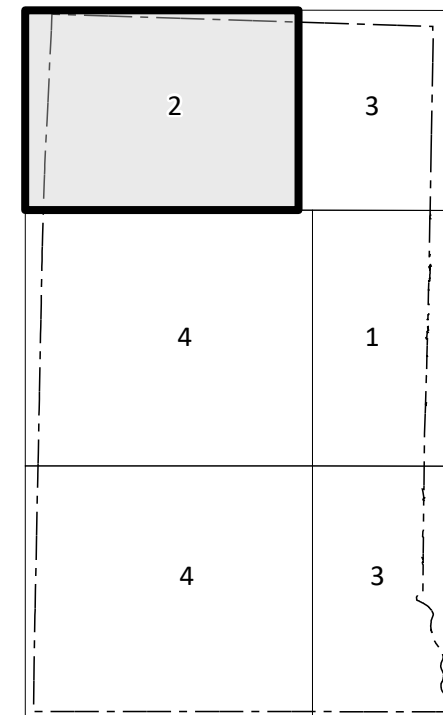
DIVISION 7 DISTRICT 1

COPIES OF THIS MAP ARE AVAILABLE
TO THE PUBLIC AT NOMINAL COST:

mapping.support@nodot.gov
https://connect.nodot.gov/resources/
State-Mapping/Pages/Ordering-Maps.aspx
(919) 434-8490



Sheet Key



LEGEND

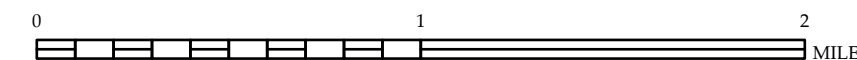
INTERSTATE US NC Divided Hwy Undivided Hwy
 BLUE RIVER PARKWAY
 UNPAVED SURFACED ROAD
 HARD SURFACE ROAD
 NONPAVED ROAD
 PROVISIONAL DRAIN ROAD
 PROTECTED LOCATION
 INTERSECTION DISTANCE
 STANDARD ROAD BRIDGE
 RAILROAD
 DRAIN SWAY OR BRIDGE
 PEDESTRIAN BRIDGE
 PEDESTRIAN WALKWAY
 VEHICLE UNDERPASS
 VEHICULAR UNDERPASS
 TUNNEL
 CULVERT
 PIP
 INTERSTADT HIGHWAY
 U.S. NUMBERED HIGHWAY
 N.C. NUMBERED HIGHWAY
 U.S. NUMBERED BICYCLE ROUTE
 N.C. NUMBERED BICYCLE ROUTE
 INTERSTADT INTERCHANGE NUMBER
 SECONDARY ROAD NUMBER
 RAILROAD LINE
 RAILROAD STATION
 INSET AREA
 STATE LINE
 COUNTY LINE
 CITY LIMITS
 FERRY ROUTE
 NARROW GULCH OR STREAM
 RIVER FLOW OR CREEK
 RESERVOIR, POND OR LAKE W/ INLAND DAM OR DAM WITH LOCK
 NATURAL SWAMP
 COMMUNITY
 COUNTY SEAL
 COLLEGE OR UNIVERSITY
 CITY LIMITS
 CHARTER GUARD STATION
 CHURCH
 CHURCH WITH CEMETERY
 CEMETERY
 PARK, STATUE
 CORRECTIONAL INSTITUTION, INSTITUTION
 QUIT
 MINE OR PIT
 HIGHWAY OR GARAGE OR MAINT. YARD
 HIGHWAY DIV. OR DIST. OFFICE
 MILITARY POST
 WRECK STATION
 FARGOGRIDS
 HISTORIC SITE
 POINTS OF INTEREST
 LIGHTHOUSE
 MONUMENT OR MONUMENT
 OVERLOOK
 REST AREA
 VISITOR REST AREA
 WELCOME CENTER AREA
 AIRPORT
 MILITARY AIRPORT
 HELIPORT
 NATIONAL STATE FOREST BOUNDARY
 WILDLIFE REFUGE
 NATIONAL / STATE PARK BOUNDARY
 GAME LANDS BOUNDARY
 MILITARY RESERVATION BOUNDARY
 INDIAN RESERVATION BOUNDARY



ALAMANCE COUNTY
NORTH CAROLINA

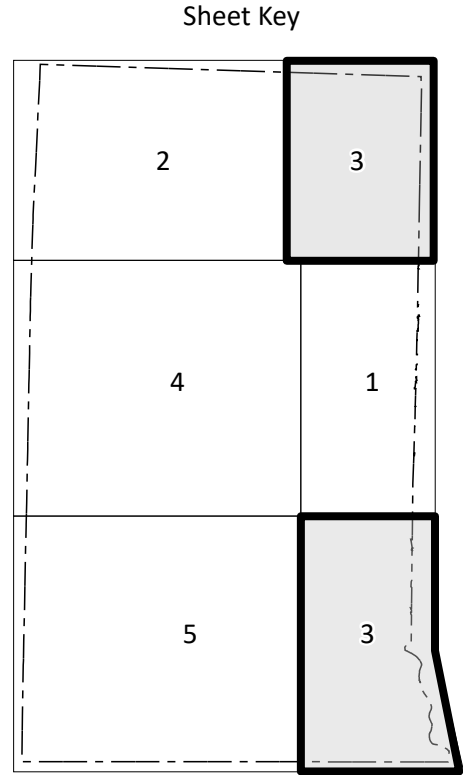
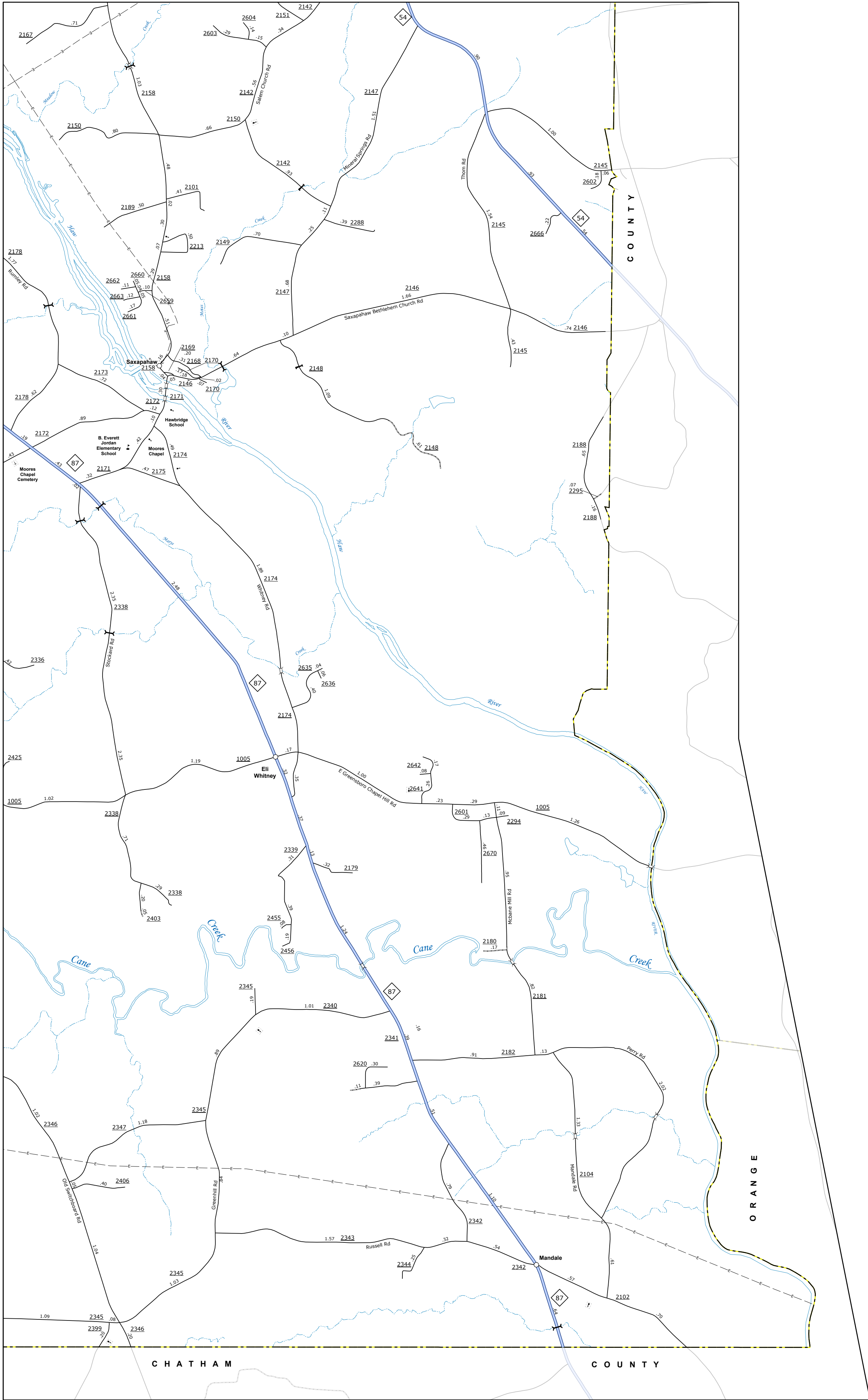
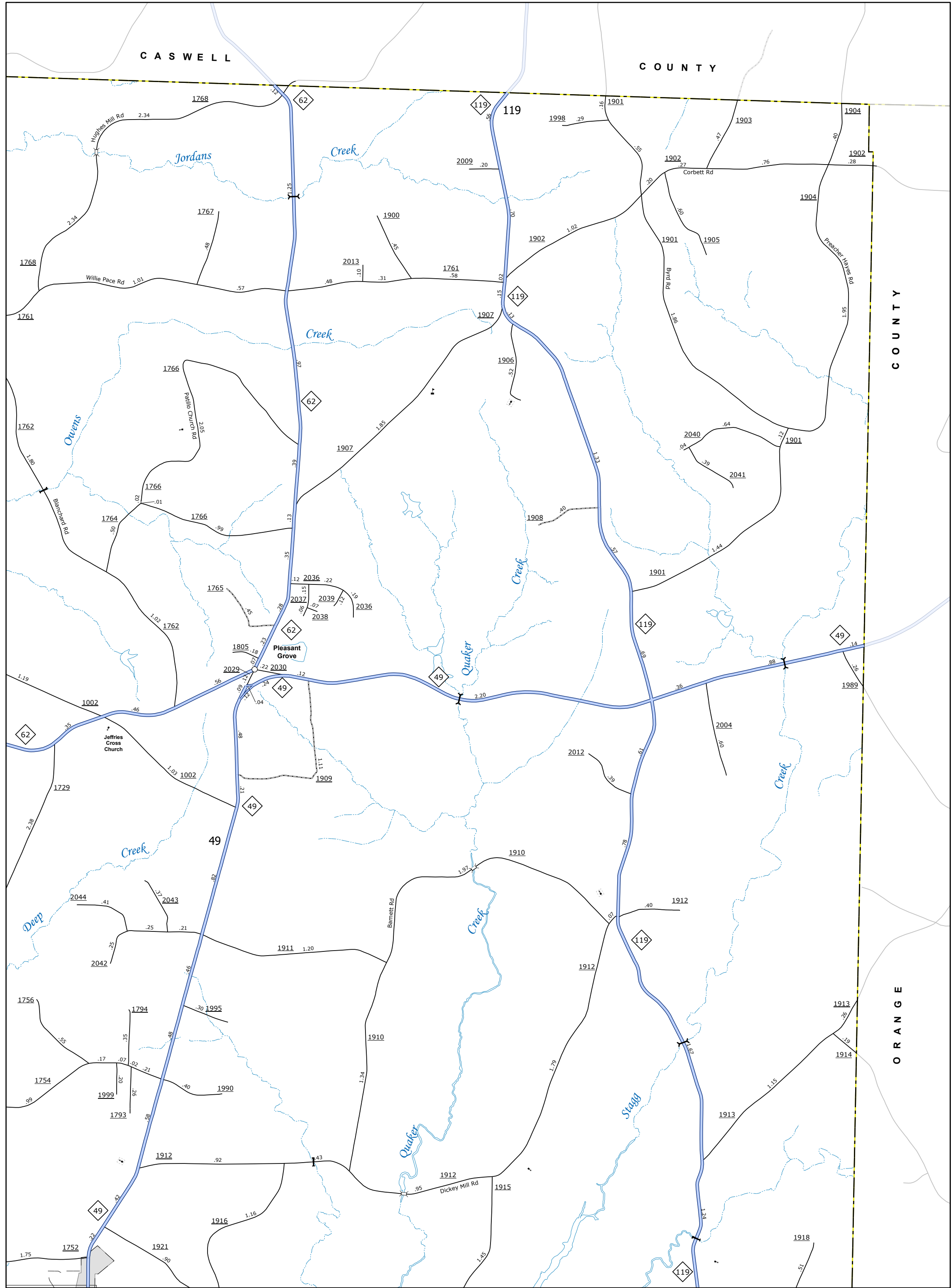
PREPARED BY THE
NORTH CAROLINA DEPARTMENT OF TRANSPORTATION
OPERATIONS PROGRAM MANAGEMENT UNIT - MAPPING SECTION
IN COOPERATION WITH THE
U.S. DEPARTMENT OF TRANSPORTATION
FEDERAL HIGHWAY ADMINISTRATION

SCA

NORTH CAROLINA PLANE COORDINATE SYSTEM
LAMBERT CONFORMAL CONIC PROJECTION

The Mapping Section's goal is to provide the most accurate and current information possible. Map data is compiled from a variety of sources, including aerial photography, ground surveys, and other data. The map is compiled and updated on a regular basis. The information shown on this map was last updated in May 2023. For additional information, visit <https://www.ncdot.gov/Mapping/Mapping.aspx>. The information shown on this map was last updated in May 2023. For additional information, visit <https://www.ncdot.gov/Mapping/Mapping.aspx>. The information shown on this map was last updated in May 2023. For additional information, visit <https://www.ncdot.gov/Mapping/Mapping.aspx>.

COPYRIGHT © 2023 BY NCDOT. ALL RIGHTS RESERVED. TO THE PUBLIC AT NO CHARGE. ncdot.mapping@ncdot.gov State Mapping Program/Mapping Maps.aspx (07/1) (04-1440)

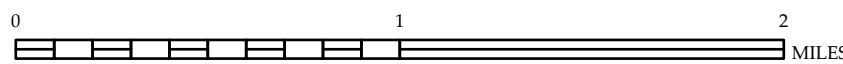


- LEGEND**
- INTERSTATE: US (thick red line), NC (thin red line), Divided Hwy (blue line with white center), Undivided Hwy (blue line)
 - BLUE RIDGE PARKWAY (thick blue line)
 - SPURRED SURFACE ROAD (thin blue line)
 - HARD SURFACE ROAD (thin black line)
 - NON-SYSTEM ROAD (dashed black line)
 - PROVISIONALLY DESIGNATED ROAD (dashed blue line)
 - PROPOSED LOCATION (dashed black line)
 - INTERSECTION: INTERSECTION (black T-junction), STANDARD ROAD BRIDGE (black T-junction with bridge symbol), RAILROAD BRIDGE (black T-junction with bridge symbol), DRAW SPAN ON BRIDGE (black T-junction with bridge symbol), PEDESTRIAN BRIDGE (black T-junction with bridge symbol), PEDESTRIAN WALKWAY (black T-junction with bridge symbol), PEDESTRIAN UNDERPASS (black T-junction with bridge symbol), VEHICLE UNDERPASS (black T-junction with bridge symbol), TUNNEL (black T-junction with bridge symbol), CULVERT (black T-junction with bridge symbol), PIPE (black T-junction with bridge symbol)
 - INTERSTATE HIGHWAY (thick red line with shield), U.S. NUMBERED HIGHWAY (thick red line with shield), N.C. NUMBERED HIGHWAY (thin red line with shield), U.S. NUMBERED BICYCLE ROUTE (thick red line with shield), N.C. NUMBERED BICYCLE ROUTE (thin red line with shield), INTERSTATE INTERCHANGE NUMBER (thick red line with shield), SECONDARY ROAD NUMBER (thick red line with shield)
 - TRAFFIC SIGNAL (black circle with white center), UTILITY LINES (dashed black line), RAILROAD LINE (dashed black line), RAILROAD STATION (black circle with white center), INLET AREA (dashed black line), STATE LINE (dashed black line), COUNTY LINE (dashed black line), CITY LIMITS (dashed black line), FERRY ROUTE (dashed black line), NARROW CREEK OR STREAM (thin blue line), WIDE RIVER OR CREEK (thick blue line), RESERVOIR, POND OR LAKE W/ ISLAND (blue area), DAM OR DAM WITH LOCK (black line), WATERFALL (black line), SWAMP (black line), COMMUNITY (black circle with white center), COUNTY SEAT (black circle with white center), SCHOOL (black circle with white center), COLLEGE OR UNIVERSITY (black circle with white center), HOSPITAL (black circle with white center), COAST GUARD STATION (black circle with white center), CHURCH (black circle with white center), CHURCH WITH CEMETERY (black circle with white center), CEMETERY (black circle with white center), PATROL STATION (black circle with white center), CORRECTION OR PENAL INSTITUTION (black circle with white center), QUARRY (black circle with white center), MINE OR PIT (black circle with white center), HIGHWAY GARAGE OR MAINT. YARD (black circle with white center), HIGHWAY DIV. OR DIST. OFFICE (black circle with white center), MILITARY POST (black circle with white center), WEIGH STATION (black circle with white center), FARMGROUNDS (black circle with white center), HISTORICAL SITE (black circle with white center), POINTS OF INTEREST (black circle with white center), LIGHTHOUSE (black circle with white center), MOUNTAIN SUMMIT (black circle with white center), OVERLOOK (black circle with white center), REST AREA (black circle with white center), VISITOR CTR./REST AREA (black circle with white center), WELCOME CENTER AREA (black circle with white center), AIRPORT (black circle with white center), MILITARY AIRPORT (black circle with white center), HILLPORT (black circle with white center)
 - NATIONAL/STATE FOREST BOUNDARY (thick green line), WILDLIFE REFUGE (thick green line), NATIONAL/STATE PARK BOUNDARY (thick green line), GAME LANDS BOUNDARY (thick green line), MILITARY RESERVATION BOUNDARY (thick green line), INDIAN RESERVATION BOUNDARY (thick green line)



ALAMANCE COUNTY NORTH CAROLINA

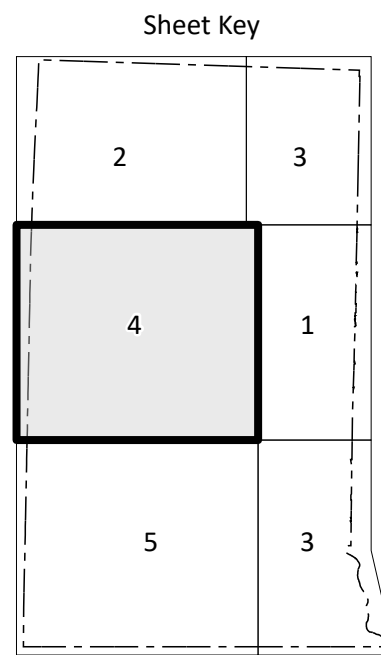
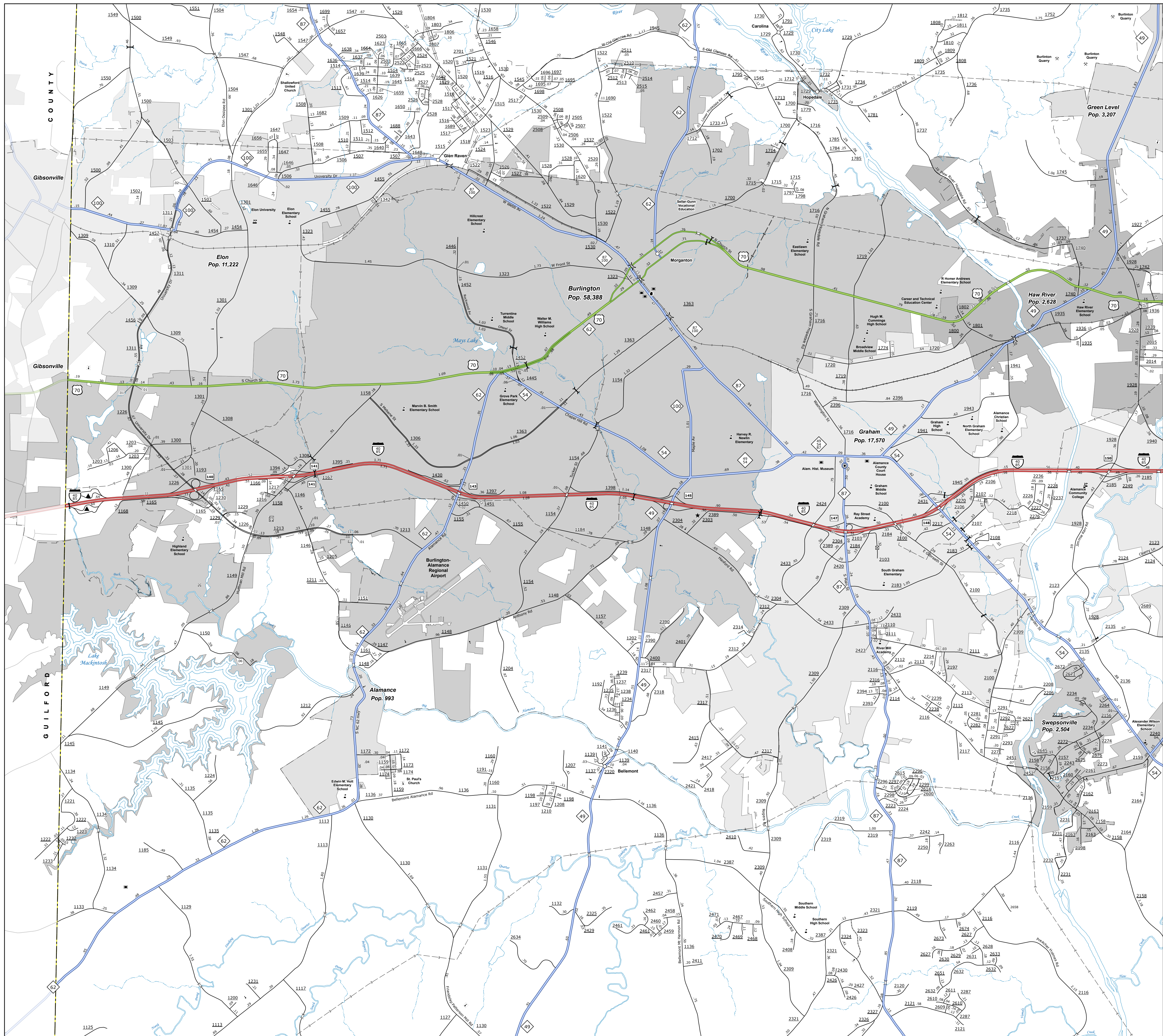
PREPARED BY THE
NORTH CAROLINA DEPARTMENT OF TRANSPORTATION
OPERATIONS PROGRAM MANAGEMENT UNIT - MAPPING SECTION
IN COOPERATION WITH THE
U.S. DEPARTMENT OF TRANSPORTATION
FEDERAL HIGHWAY ADMINISTRATION
SCALE



NORTH CAROLINA PLANE COORDINATE SYSTEM
LAMBERT CONFORMAL CONIC PROJECTION

The Mapping Services Unit is to provide the most accurate and current information possible. Map data is compiled from numerous sources with varying dates of publication and map accuracy standards. As a result, the accuracy of the map cannot be guaranteed. The user is advised that the map is for informational purposes only and should not be used for navigation or other critical purposes. For additional information, visit <http://www.ncdot.gov> or call 1-800-368-6868.

COPIES OF THIS MAP ARE AVAILABLE TO THE PUBLIC AT NO CHARGE. For more information, visit <http://www.ncdot.gov> or call 1-800-368-6868.

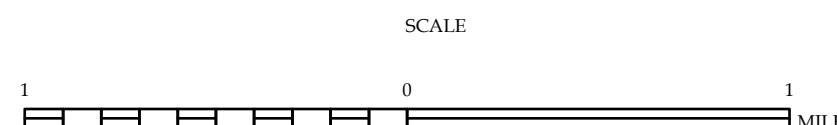


- LEGEND**
- INTERSTATE US
 - US
 - Divided Hwy
 - Undivided Hwy
 - Blue Ridge Parkway
 - Unimproved Surface Road
 - Hard Surface Road
 - Non-System Road
 - Provisionally Designated Road
 - Intersection Distance
 - Projected Location
 - Standard Road Bridge
 - Railroad Bridge
 - Draw Span or Bridge
 - Pedestrian Bridge
 - Pedestrian Walkway
 - Pedestrian Underpass
 - Vehicle Underpass
 - Tunnel
 - Chute
 - Pipe
 - Interstate Highway
 - U.S. Numbered Highway
 - N.C. Numbered Highway
 - U.S. Numbered Bicycle Route
 - N.C. Numbered Bicycle Route
 - Interstate Interchange Number
 - Secondary Road Number
 - Utility Lines
 - Railroad Line
 - Railroad Station
 - Inset Area
 - State Line
 - County Line
 - City Limits
 - Ferry Route
 - Narrow Creek or Stream
 - Wide River or Creek
 - Reservoir, Pond or Lake w/ Island
 - Dam or Dam with Lock
 - Natural
 - Swamp
 - Community
 - County Seat
 - School
 - College or University
 - Hospital
 - Coast Guard Station
 - Church
 - Church with Cemetery
 - Cemetery
 - Police Station
 - Correction or Penal Institution
 - Quarry
 - Mine or Pit
 - Highway Garage or Maint. Yard
 - Highway Div. or Dist. Office
 - Military Post
 - Weight Station
 - Fairgrounds
 - Historical Site
 - Points of Interest
 - Lighthouse
 - Mountain Summit
 - Overlook
 - Rest Area
 - Visitor Ctr. Rest Area
 - Willow Ctr. Rest Area
 - Airport
 - Military Airport
 - Helipad
 - National / State Forest Boundary
 - Wildlife Refuge
 - National / State Park Boundary
 - Game Lands Boundary
 - Military Reservation Boundary
 - Indian Reservation Boundary



ALAMANCE COUNTY NORTH CAROLINA

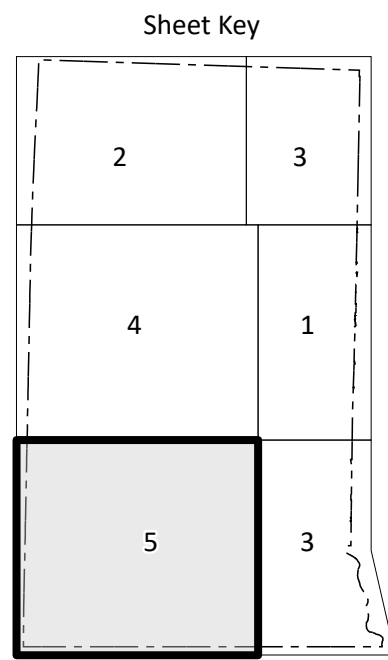
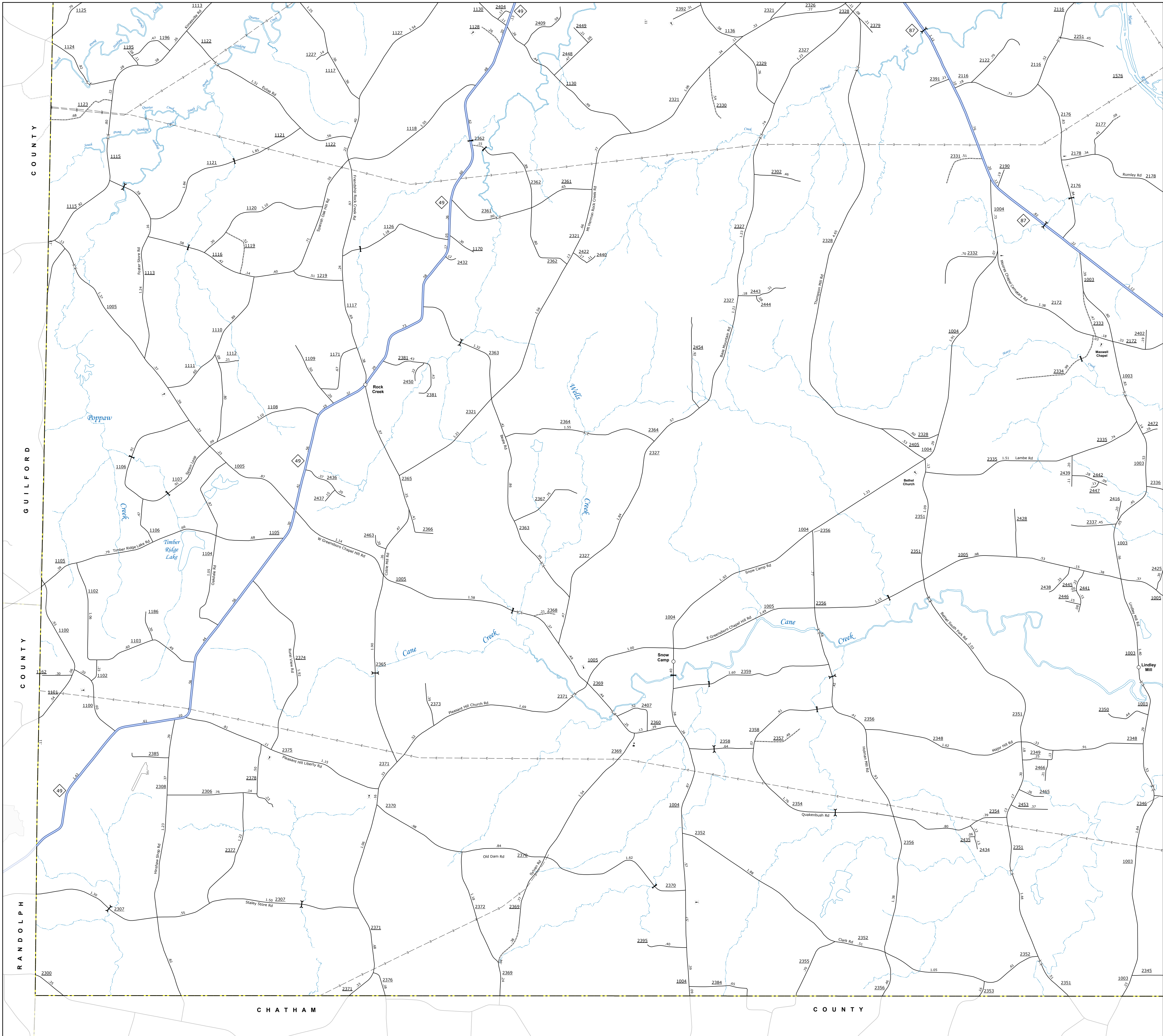
PREPARED BY THE
NORTH CAROLINA DEPARTMENT OF TRANSPORTATION
OPERATIONS PROGRAM MANAGEMENT UNIT - MAPPING SECTION
IN COOPERATION WITH THE
U.S. DEPARTMENT OF TRANSPORTATION
FEDERAL HIGHWAY ADMINISTRATION



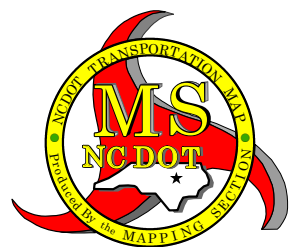
NORTH CAROLINA PLANE COORDINATE SYSTEM
LAMBERT CONFORMAL CONIC PROJECTION

The Mapping Services Unit is to provide the most accurate and current information possible. Map data is compiled from numerous sources with varying dates of publication and map accuracy standards. As a result, the accuracy of the information shown on this map cannot be guaranteed. Users are advised to verify the information shown on this map with the appropriate authorities. For additional information, visit www.ncdot.gov or call 1-800-368-6868. For more information, visit www.ncdot.gov or call 1-800-368-6868.

COPIES OF THIS MAP ARE AVAILABLE TO THE PUBLIC AT NO CHARGE. FOR MORE INFORMATION, VISIT www.ncdot.gov OR CALL 1-800-368-6868. FOR MORE INFORMATION, VISIT www.ncdot.gov OR CALL 1-800-368-6868.



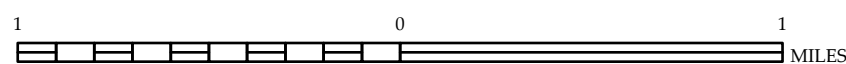
- LEGEND**
- INTERSTATE (US, NC)
 - Divided Hwy
 - Undivided Hwy
 - BLUE RIDGE PARKWAY
 - IMPROVED SURFACE ROAD
 - HIGHWAY SURFACE ROAD
 - PROVISIONAL/DRAWN ROAD
 - PROPOSED LOCATION
 - INTERSECTION DISTANCE
 - STANDARD ROAD BRIDGE
 - RAILROAD BRIDGE
 - DRY SPAN OR BRIDGE
 - PEDESTRIAN BRIDGE
 - PEDESTRIAN WALKWAY
 - PEDESTRIAN UNDERPASS
 - VEHICULAR UNDERPASS
 - TUNNEL
 - CLUTTER
 - PIPE
 - INTERSTATE HIGHWAY
 - U.S. NUMBERED HIGHWAY
 - N.C. NUMBERED HIGHWAY
 - U.S. NUMBERED BICYCLE ROUTE
 - N.C. NUMBERED BICYCLE ROUTE
 - INTERSTATE INTERCHANGE NUMBER
 - SECONDARY ROAD NUMBER
 - UTILITY LINES
 - RAILROAD LINE
 - RAILROAD STATION
 - INSET AREA
 - STATE LINE
 - COUNTY LINE
 - CITY LIMITS
 - FEED ROUTE
 - NARROW CREEK OR STREAM
 - WIDE RIVER OR CREEK
 - RESERVOIR, POND OR LAKE W/ ISLAND
 - DAM OR DAM WITH LOCK
 - WATERFALL
 - SWAMP
 - COMMUNITY
 - COUNTY SEAT
 - SCHOOL
 - COLLEGE OR UNIVERSITY
 - HOSPITAL
 - COAST GUARD STATION
 - CHURCH
 - CHURCH WITH CEMETERY
 - CEMETERY
 - PATROL STATION
 - CORRECTION OR PENAL INSTITUTION
 - QUARRY
 - MINE OR PIT
 - HIGHWAY GARAGE OR MAINT. YARD
 - HIGHWAY DIV. OR DIST. OFFICE
 - MILITARY POST
 - WEIGH STATION
 - FARMS/ROADS
 - HISTORICAL SITE
 - POINTS OF INTEREST
 - LIGHTHOUSE
 - MOUNTAIN SUMMIT
 - OVERLOOK
 - REST AREA
 - VISITOR CTR/REST AREA
 - WELCOME CTR/REST AREA
 - AIRPORT
 - MILITARY AIRPORT
 - HILLPORT
 - NATIONAL / STATE FOREST BOUNDARY
 - WILDLIFE REFUGE
 - NATIONAL / STATE PARK BOUNDARY
 - GAME LANDS BOUNDARY
 - MILITARY RESERVATION BOUNDARY
 - INDIAN RESERVATION BOUNDARY



ALAMANCE COUNTY NORTH CAROLINA

PREPARED BY THE
NORTH CAROLINA DEPARTMENT OF TRANSPORTATION
OPERATIONS PROGRAM MANAGEMENT UNIT - MAPPING SECTION
IN COOPERATION WITH THE
U.S. DEPARTMENT OF TRANSPORTATION
FEDERAL HIGHWAY ADMINISTRATION

SCALE



NORTH CAROLINA PLANE COORDINATE SYSTEM
LAMBERT CONFORMAL CONIC PROJECTION