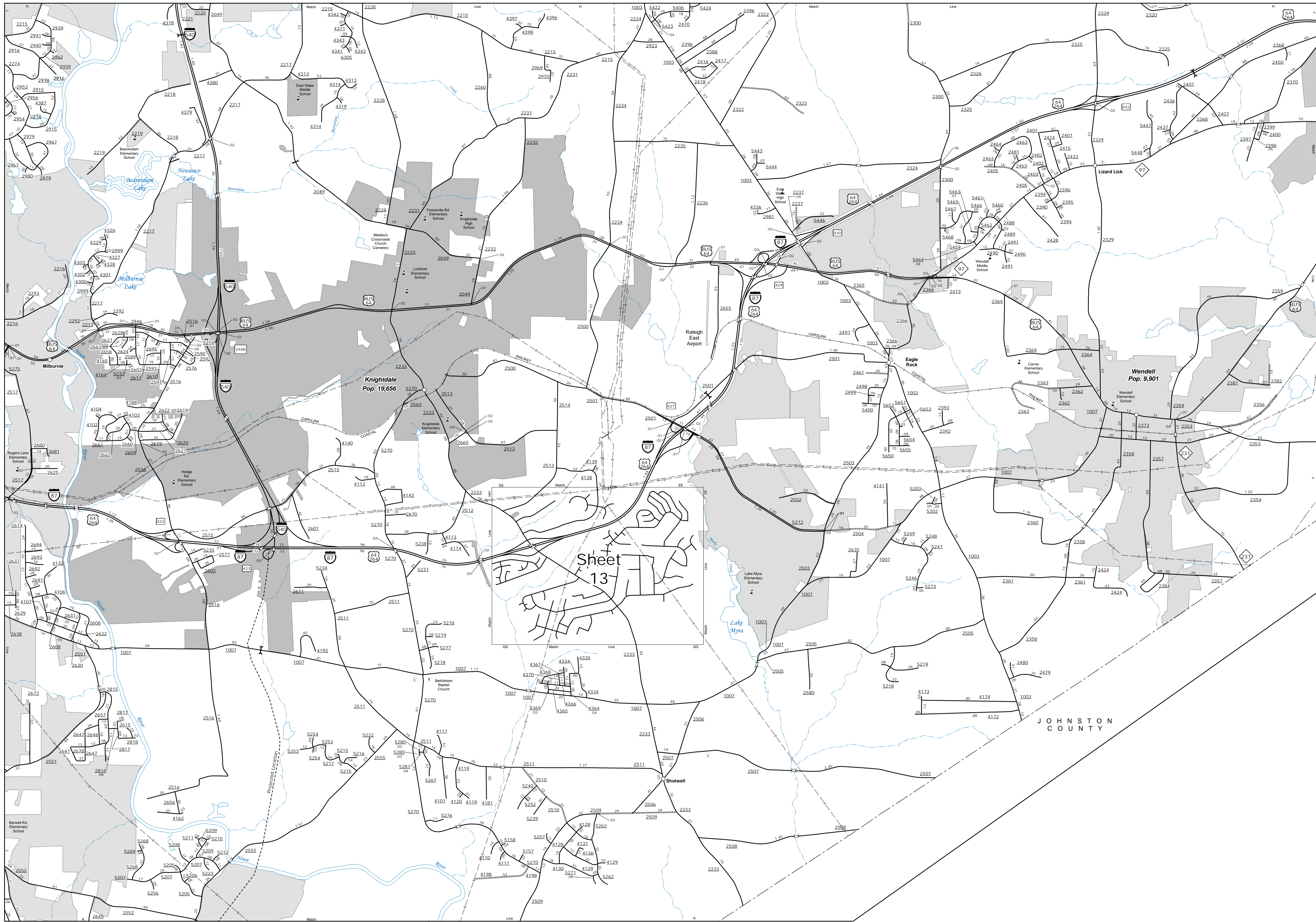


The Mapping Section's goal is to provide the most accurate and current information possible. Map data is compiled from numerous sources, including aerial photography, ground surveys, and other data. While every effort is made to ensure the accuracy of the information, the user assumes all responsibility for the use of the information. For additional information, visit <http://www.ncdot.gov/transportation/mapping>, and click on Data Providers or contact us by phone at (919) 855-8490.

COPIES OF THIS MAP ARE AVAILABLE
FOR PURCHASE AT A PUBLIC AT NOMINAL COST.
N.C. DEPARTMENT OF TRANSPORTATION
ADDRESS: 4609 BERNI RD.
RALEIGH, NC 27609



Knightdale

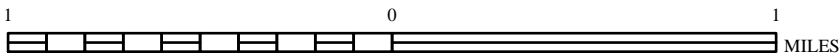


ENLARGED MUNICIPAL AND SUBURBAN AREAS

WAKE COUNTY NORTH CAROLINA

PREPARED BY THE
NORTH CAROLINA DEPARTMENT OF TRANSPORTATION
OPERATIONS PROGRAM MANAGEMENT UNIT - MAPPING SECTION
IN COOPERATION WITH THE
U.S. DEPARTMENT OF TRANSPORTATION
FEDERAL HIGHWAY ADMINISTRATION

SCALE



10,000 FOOT GRID BASED ON NORTH CAROLINA PLANE COORDINATE SYSTEM
LAMBERT CONFORMAL CONIC PROJECTION

SHEET 9 OF 13