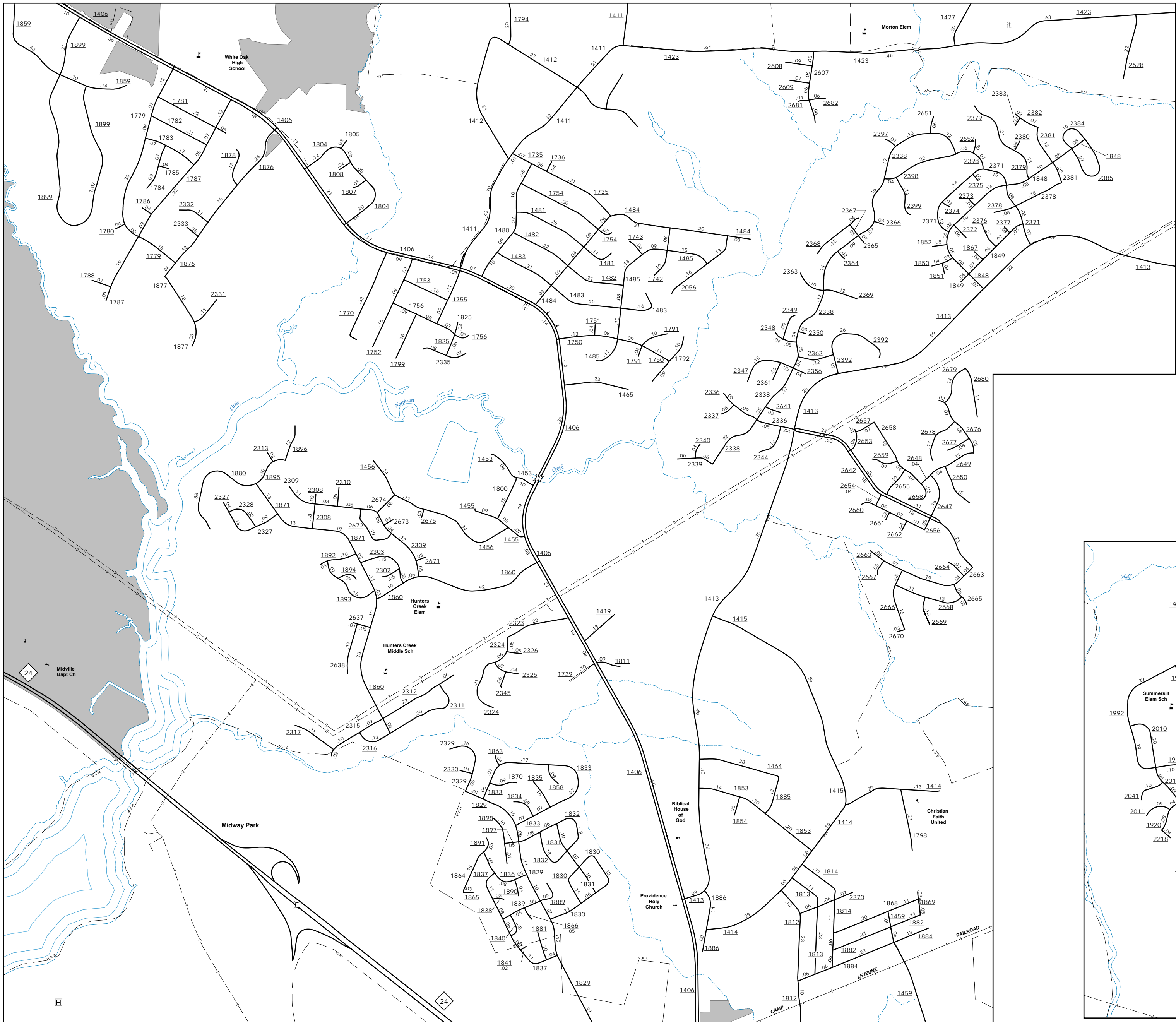
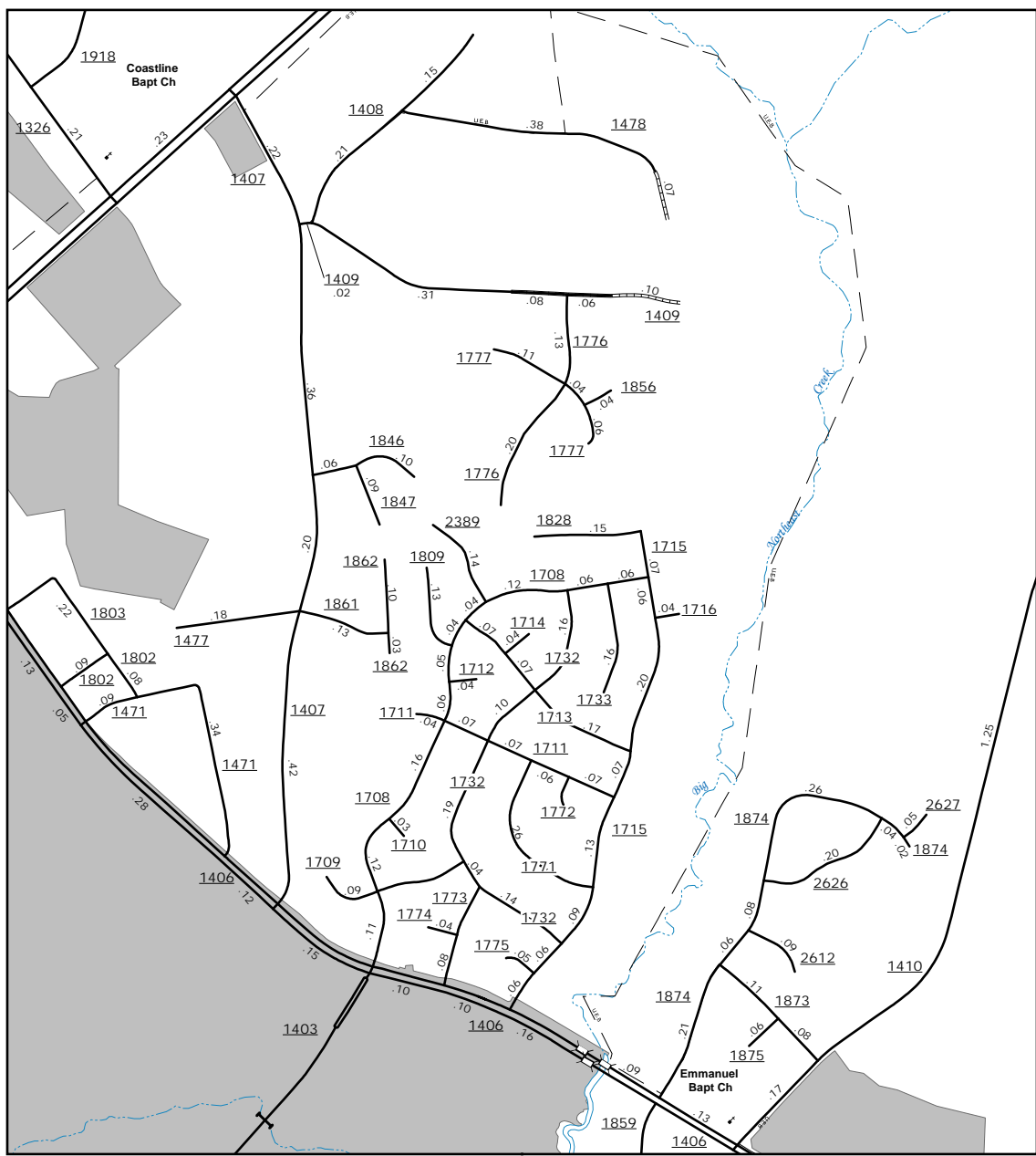


The Mapping Section's goal is to provide the most accurate and current information possible. Map data is compiled from numerous sources including aerial photography, ground surveys, and other reliable sources. While every effort is made to ensure accuracy, the user assumes all responsibility for the use of this information. The map is not to be used for legal purposes. For more information, visit <http://www.ncdot.gov/transportation/mapping>, and click on Data Provider, or contact us by phone at (811) 835-8480.

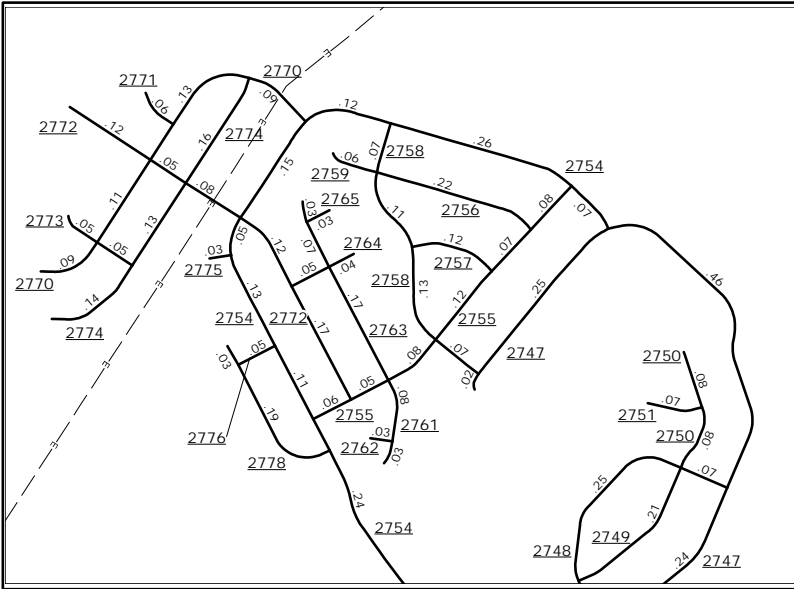
COPIES OF THIS MAP ARE AVAILABLE
FROM THE
N.C. DEPARTMENT OF TRANSPORTATION
ADDRESS:
MSAU-MAPPING SECTION
4809 BERT RD.
RALEIGH, NC 27609



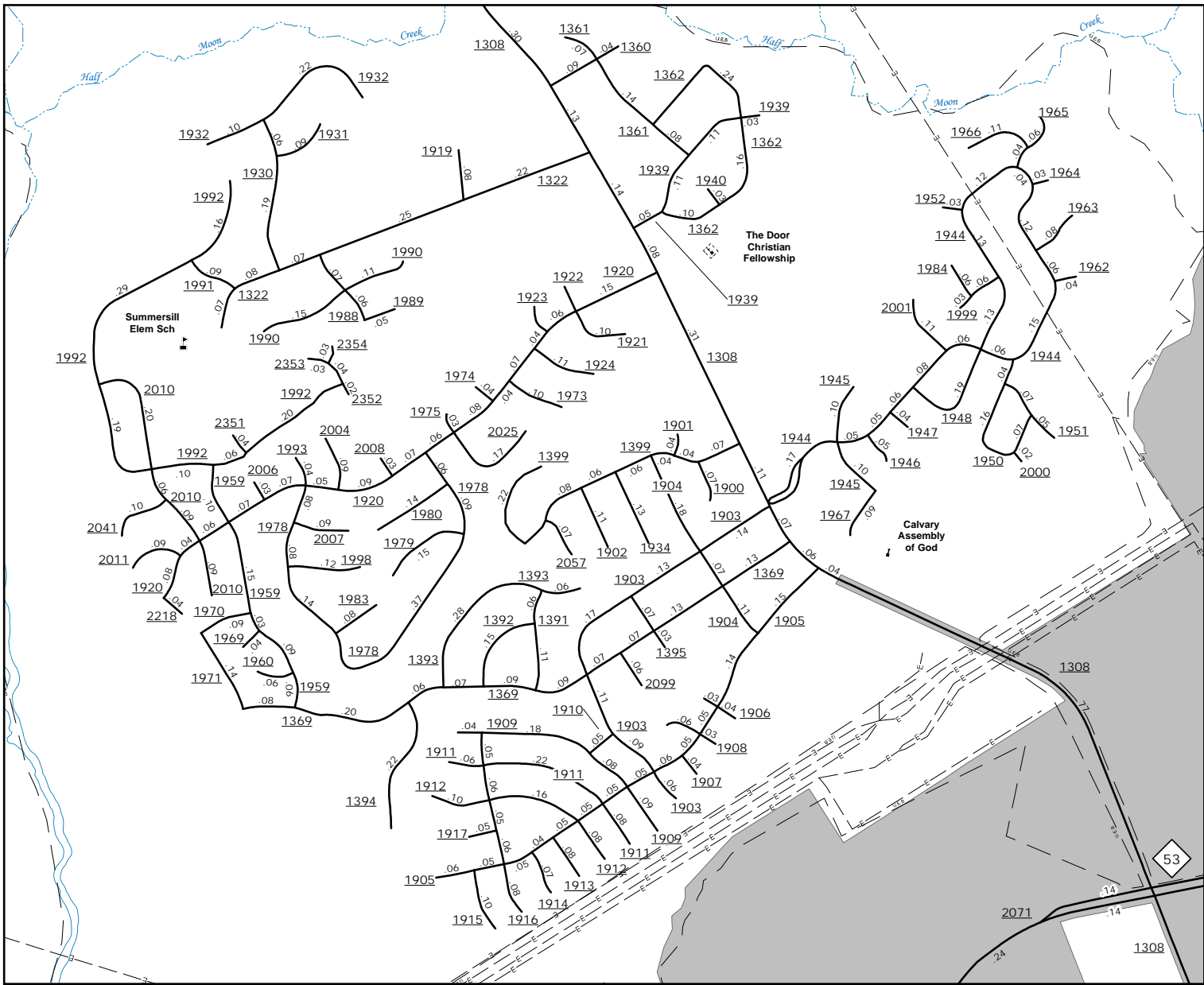
Central Jacksonville



Jacksonville Country Club



Carolina Plantations

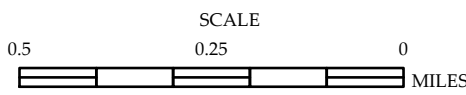


Northeast Jacksonville



ENLARGED MUNICIPAL AND SUBURBAN AREAS
ONSLOW COUNTY
NORTH CAROLINA

PREPARED BY THE
NORTH CAROLINA DEPARTMENT OF TRANSPORTATION
OPERATIONS PROGRAM MANAGEMENT UNIT - MAPPING SECTION
IN COOPERATION WITH THE
U.S. DEPARTMENT OF TRANSPORTATION
FEDERAL HIGHWAY ADMINISTRATION



10,000 FOOT GRID BASED ON NORTH CAROLINA PLANE COORDINATE SYSTEM
LAMBERT CONFORMAL CONIC PROJECTION