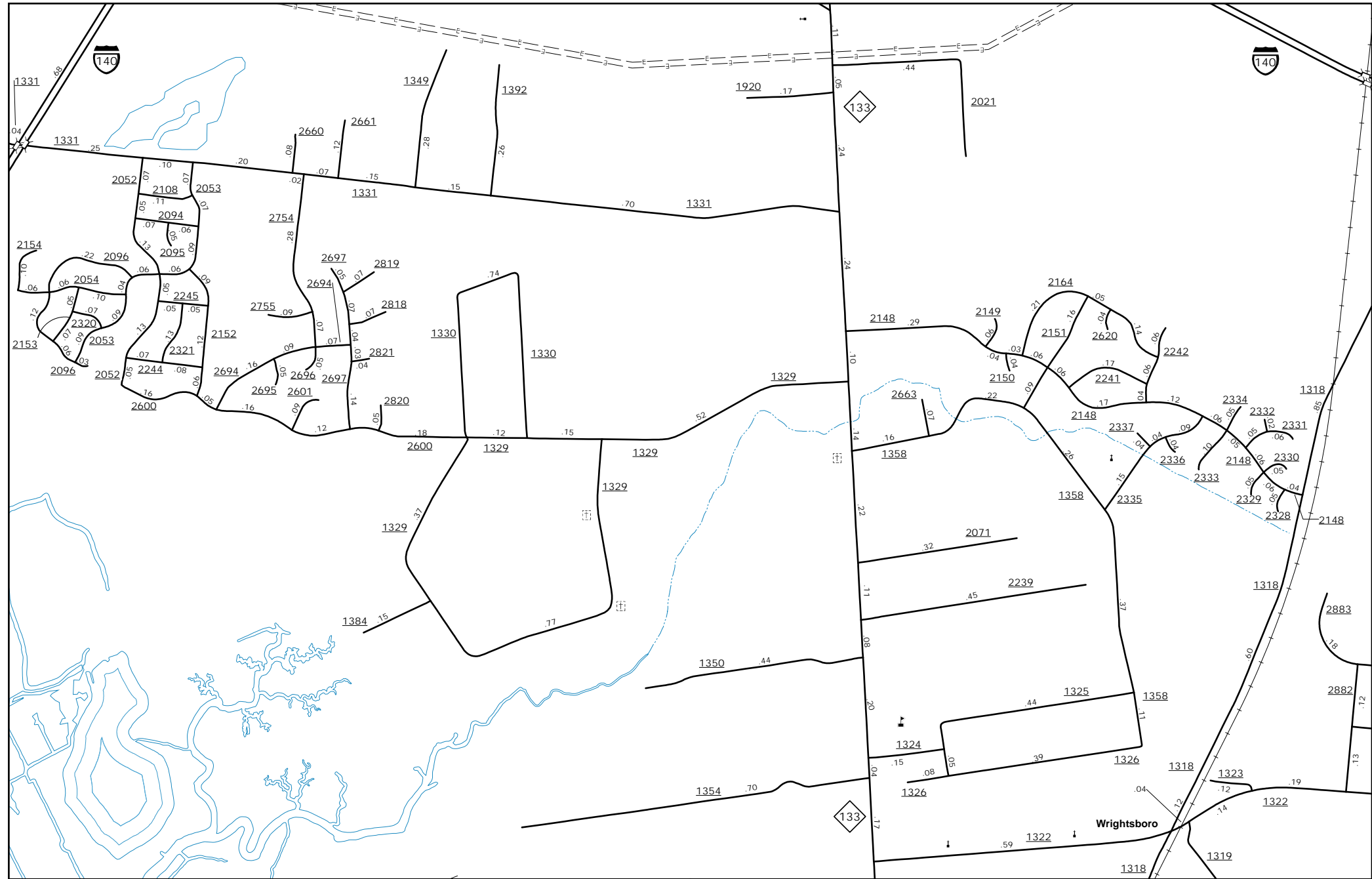
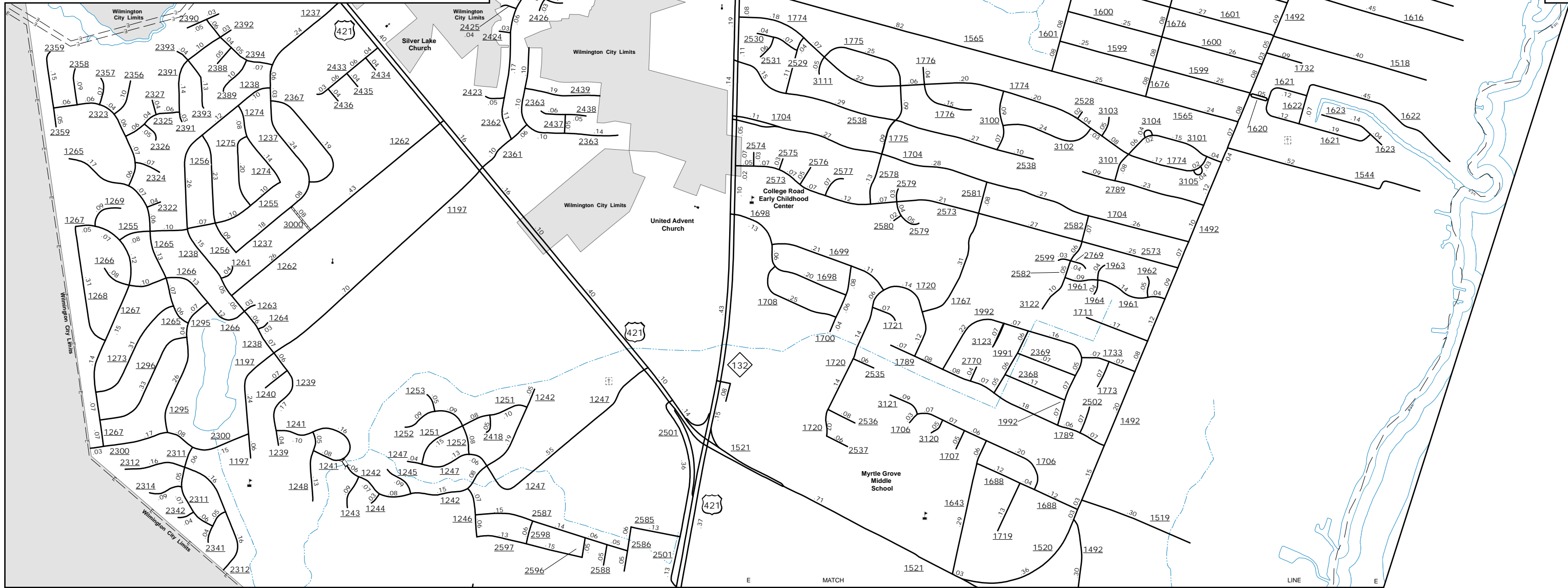


The Mapping Section's goal is to provide the most accurate and current information possible. Map data is compiled from numerous sources and is subject to change. The mapping section is not responsible for any inaccuracies or omissions. The mapping section is not responsible for any damages or liabilities arising from the use of this map. For additional information, visit <http://www.ncdot.gov/transportation/mapping> and click on Data Provider, or contact us by phone at (919) 835-8480.

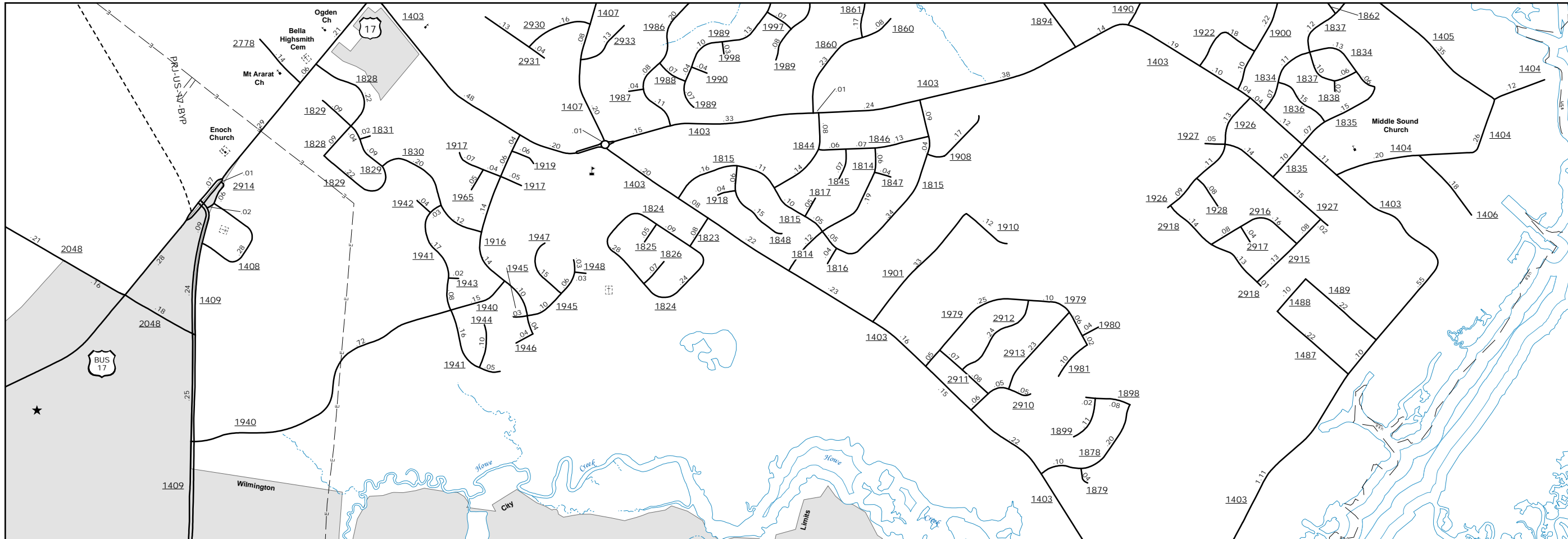
COPIES OF THIS MAP ARE AVAILABLE
FOR PURCHASE AT A PUBLIC NOMINAL COST.
ADDRESS: N.C. DEPARTMENT OF TRANSPORTATION
4809 BERTHOUD RD.
Raleigh, NC 27609



Wrightsboro



Myrtle Grove Vicinity

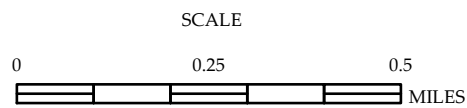


Ogden Elementary Area



ENLARGED MUNICIPAL AND SUBURBAN AREAS NEW HANOVER COUNTY NORTH CAROLINA

PREPARED BY THE
NORTH CAROLINA DEPARTMENT OF TRANSPORTATION
OPERATIONS PROGRAM MANAGEMENT UNIT - MAPPING SECTION
IN COOPERATION WITH THE
U.S. DEPARTMENT OF TRANSPORTATION
FEDERAL HIGHWAY ADMINISTRATION



10,000 FOOT GRID BASED ON NORTH CAROLINA PLANE COORDINATE SYSTEM
LAMBERT CONFORMAL CONIC PROJECTION