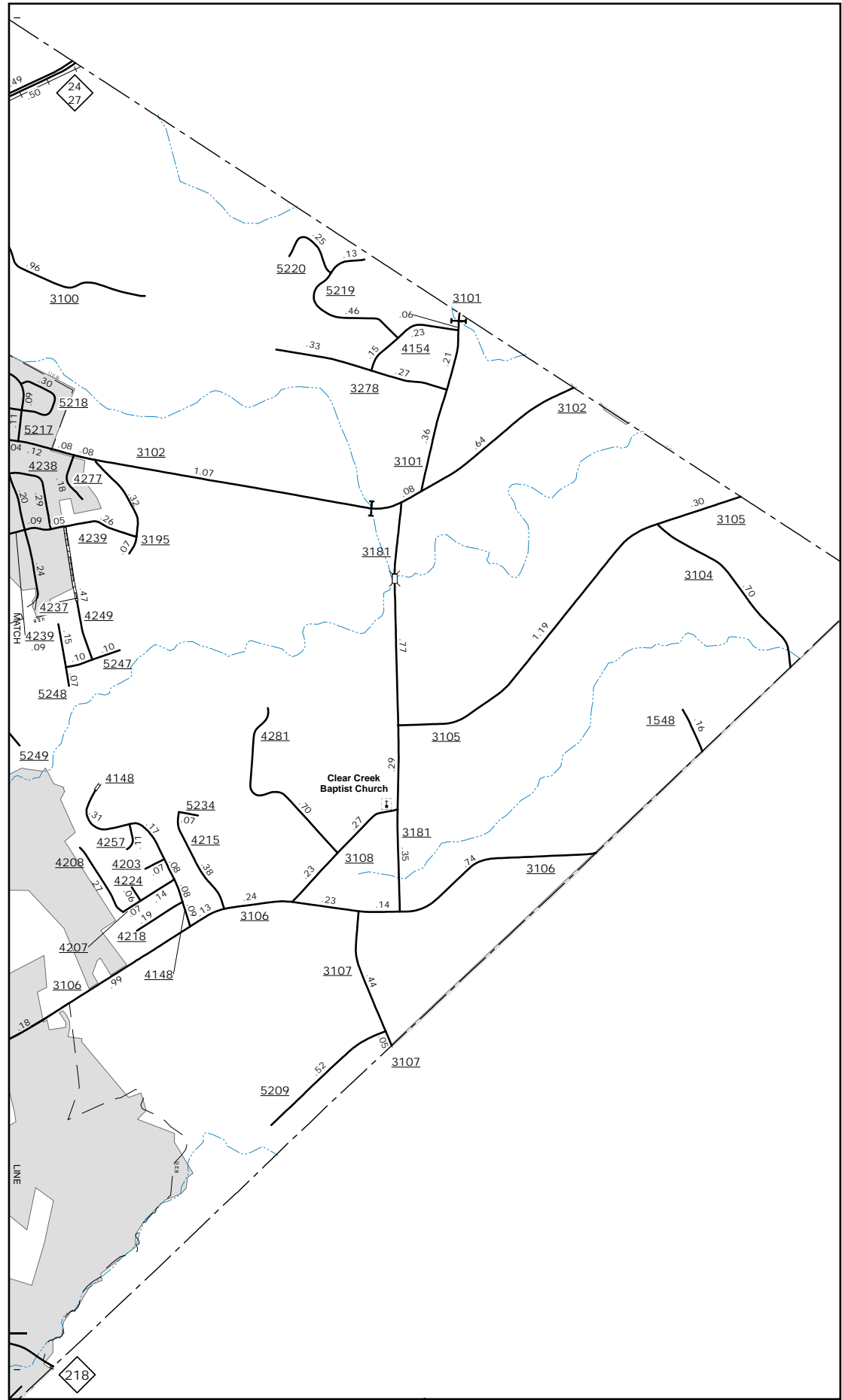
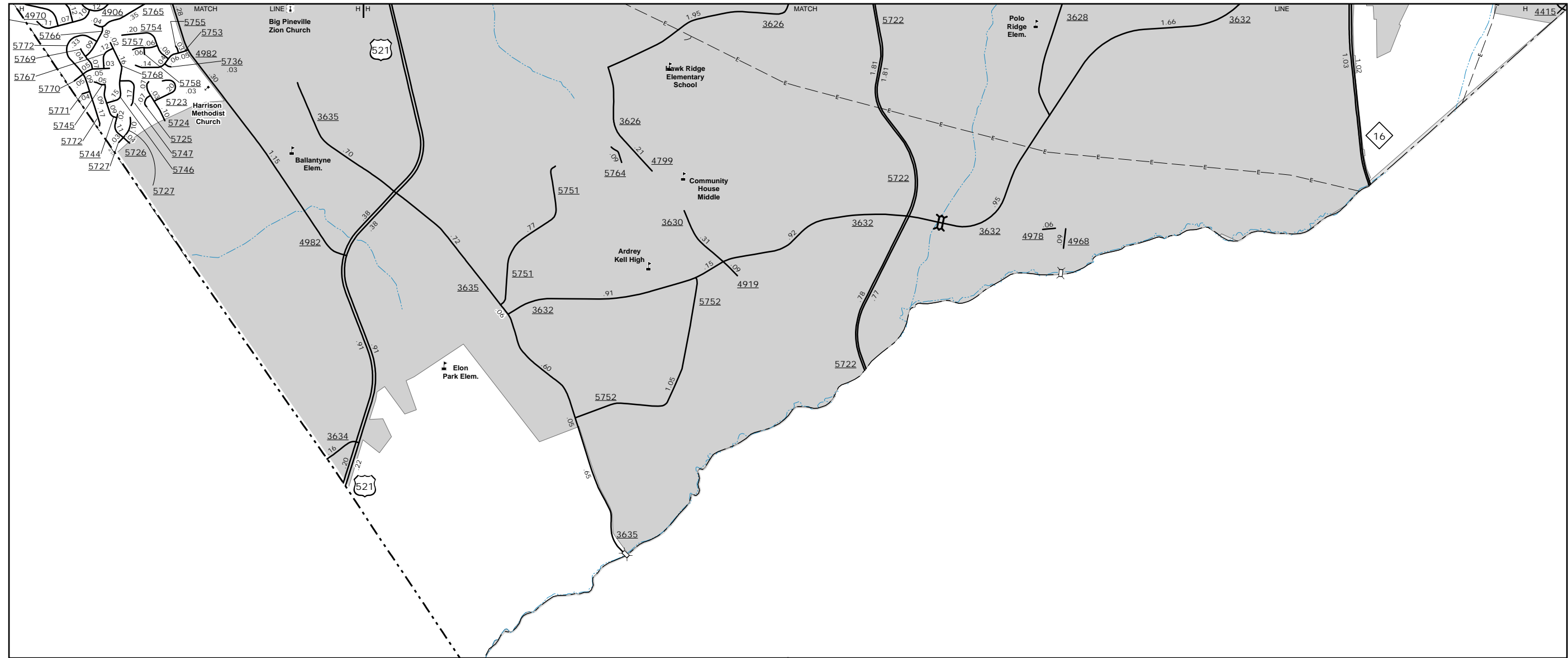
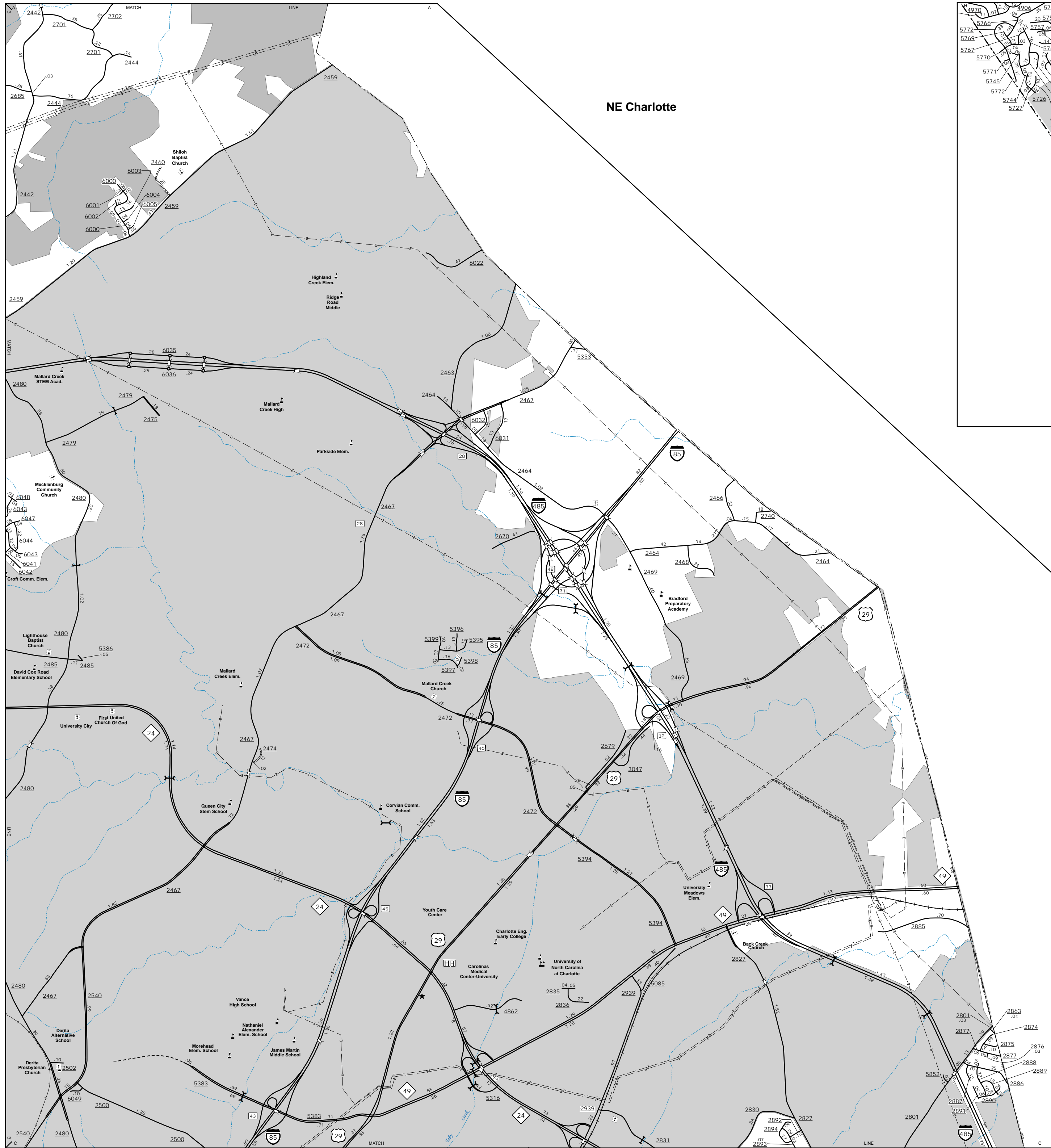


The Mapping Section's goal is to provide the most accurate and current information possible. Map data is compiled from numerous sources including aerial photography, ground surveys, and other data. The accuracy of the information is not guaranteed. The information is provided for informational purposes only. It is not to be used for any purpose other than that for which it was intended. For additional information, visit <http://www.ncdot.gov/transportation/mapping> and click on Data Providers, or contact us by phone at (819) 855-8480.

COPIES OF THIS MAP ARE AVAILABLE
FOR PURCHASE AT A PUBLIC COST.
ADDRESS:
N.C. DEPARTMENT OF TRANSPORTATION
MSAU - MAPPING SECTION
4809 BERNI, RD.
RALEIGH, NC 27609

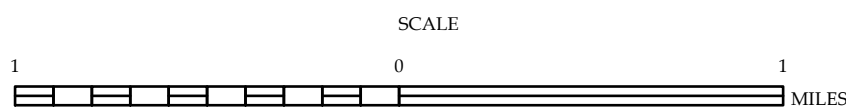


East Mecklenburg



ENLARGED MUNICIPAL AND SUBURBAN AREAS MECKLENBURG COUNTY NORTH CAROLINA

PREPARED BY THE
NORTH CAROLINA DEPARTMENT OF TRANSPORTATION
OPERATIONS PROGRAM MANAGEMENT UNIT - MAPPING SECTION
IN COOPERATION WITH THE
U.S. DEPARTMENT OF TRANSPORTATION
FEDERAL HIGHWAY ADMINISTRATION



10,000 FOOT GRID BASED ON NORTH CAROLINA PLANE COORDINATE SYSTEM
LAMBERT CONFORMAL CONIC PROJECTION