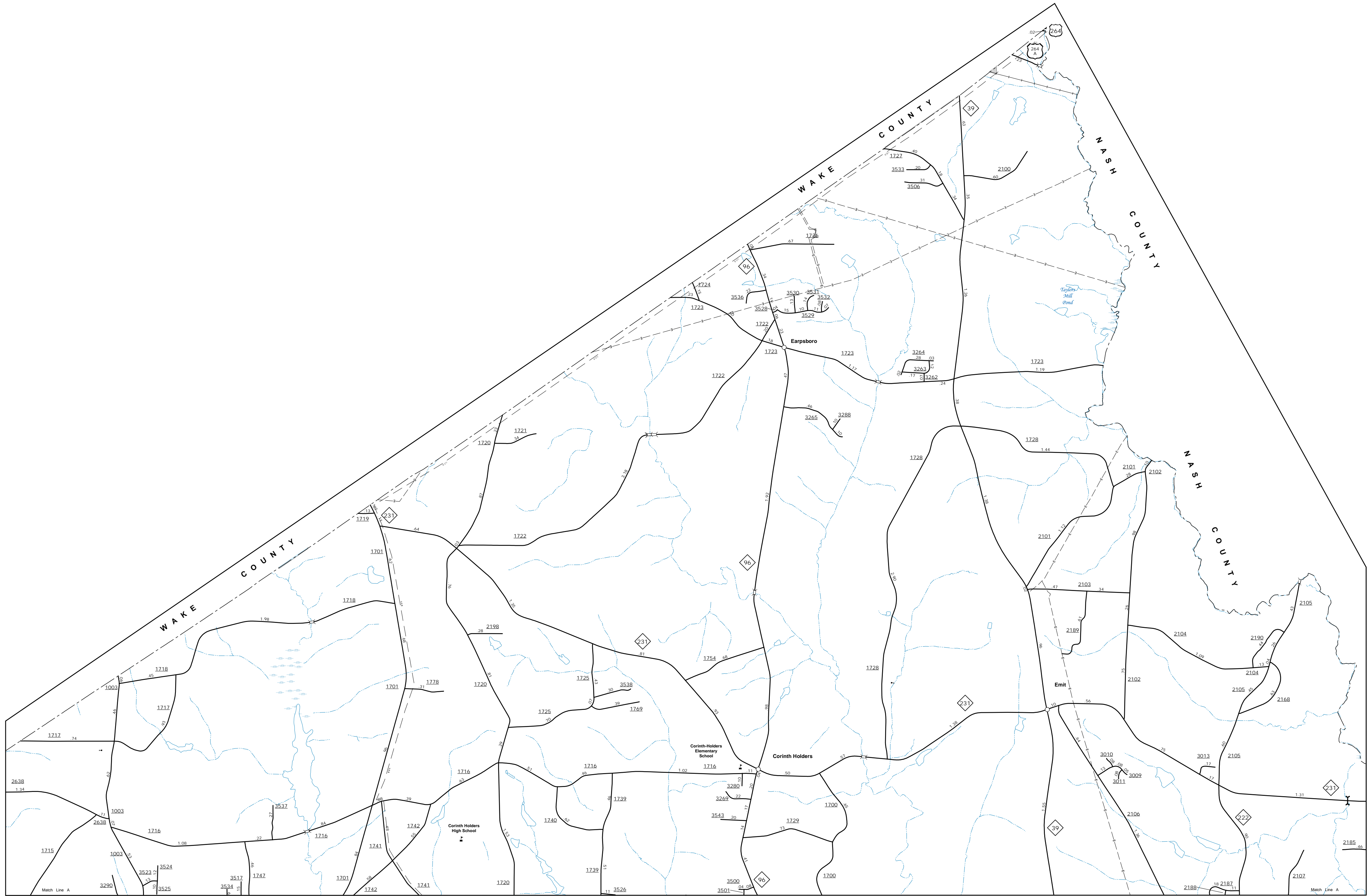


The Mapping Section's goal is to provide the most accurate and current information possible. Map data is compiled from various sources including aerial photography, ground surveys, and other reliable sources. The accuracy of the information is not guaranteed. The information is for informational purposes only and should not be used for legal or financial purposes. The information is subject to change without notice. For additional information, visit <http://www.ncdot.gov/TravelInformation> and click on Data Providers or contact us by phone at (919) 855-8490.

COPIES OF THIS MAP ARE AVAILABLE
FROM THE PUBLIC INFORMATION
ADDRESS:
N.C. DEPARTMENT OF TRANSPORTATION
MSAU - MAPPING SECTION
4809 BERNI RD.
RALEIGH, NC 27609



Corinth Holders

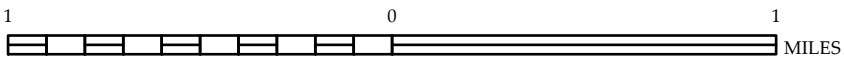


ENLARGED MUNICIPAL AND SUBURBAN AREAS

JOHNSTON COUNTY NORTH CAROLINA

PREPARED BY THE
NORTH CAROLINA DEPARTMENT OF TRANSPORTATION
OPERATIONS PROGRAM MANAGEMENT UNIT - MAPPING SECTION
IN COOPERATION WITH THE
U.S. DEPARTMENT OF TRANSPORTATION
FEDERAL HIGHWAY ADMINISTRATION

SCALE



10,000 FOOT GRID BASED ON NORTH CAROLINA PLANE COORDINATE SYSTEM
LAMBERT CONFORMAL CONIC PROJECTION