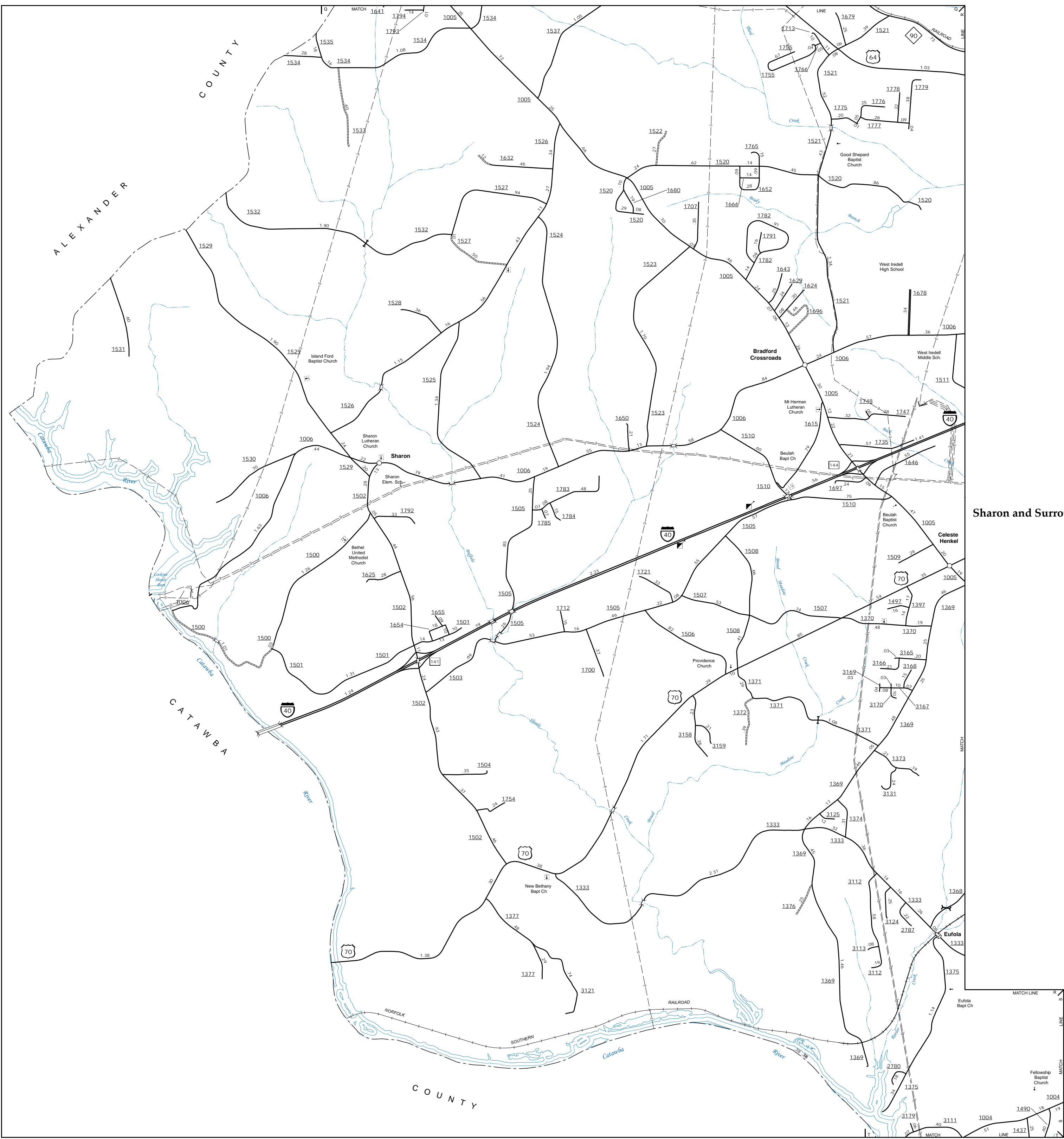
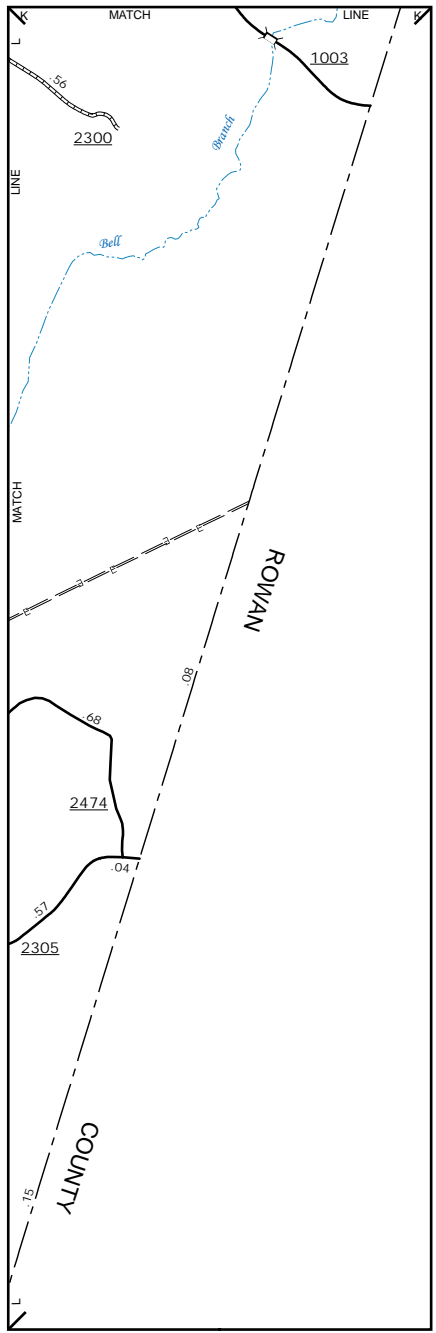


The Mapping Section's goal is to provide the most accurate and current information possible. Map data is compiled from numerous sources including aerial photography, ground surveys, and other reliable sources. While every effort is made to ensure the accuracy of the information shown on this map, the Department of Transportation does not warrant the accuracy of the information shown on this map. For additional information, visit <http://www.ncdot.gov/transportation> and click on Data Providers or contact us by phone at (919) 855-4480.

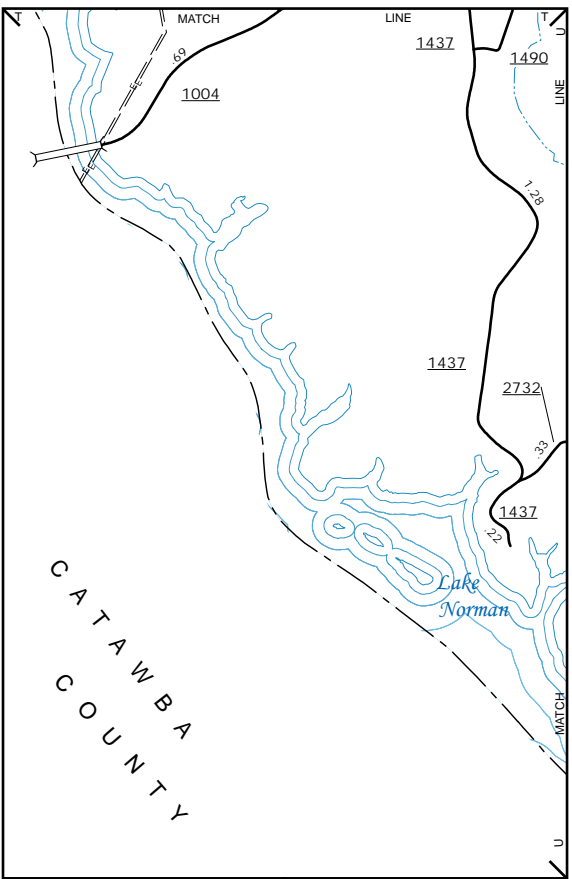
COPIES OF THIS MAP ARE AVAILABLE
AT THE PUBLIC INFORMATION COST
ADDRESS:
N.C. DEPARTMENT OF TRANSPORTATION
MSAU - MAPPING SECTION
4801 BERT RD.
RALEIGH, NC 27605



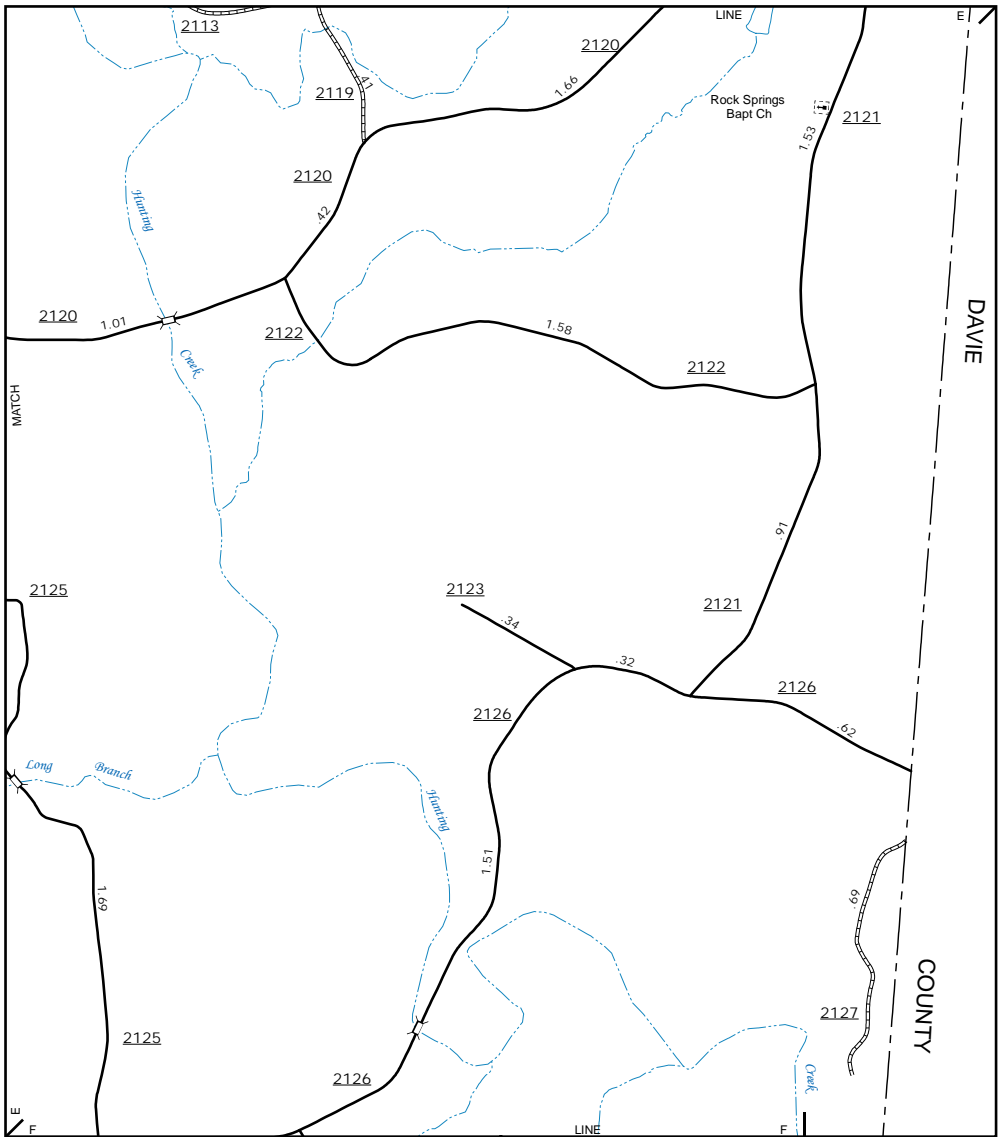
Sharon and Surrounding Area



Inset 2



Inset 3



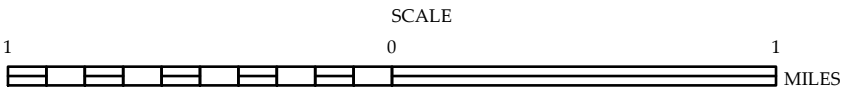
Rock Springs Bapt. Ch. Area



ENLARGED MUNICIPAL AND SUBURBAN AREAS

IREDELL COUNTY NORTH CAROLINA

PREPARED BY THE
NORTH CAROLINA DEPARTMENT OF TRANSPORTATION
OPERATIONS PROGRAM MANAGEMENT UNIT - MAPPING SECTION
IN COOPERATION WITH THE
U.S. DEPARTMENT OF TRANSPORTATION
FEDERAL HIGHWAY ADMINISTRATION



10,000 FOOT GRID BASED ON NORTH CAROLINA PLANE COORDINATE SYSTEM
LAMBERT CONFORMAL CONIC PROJECTION