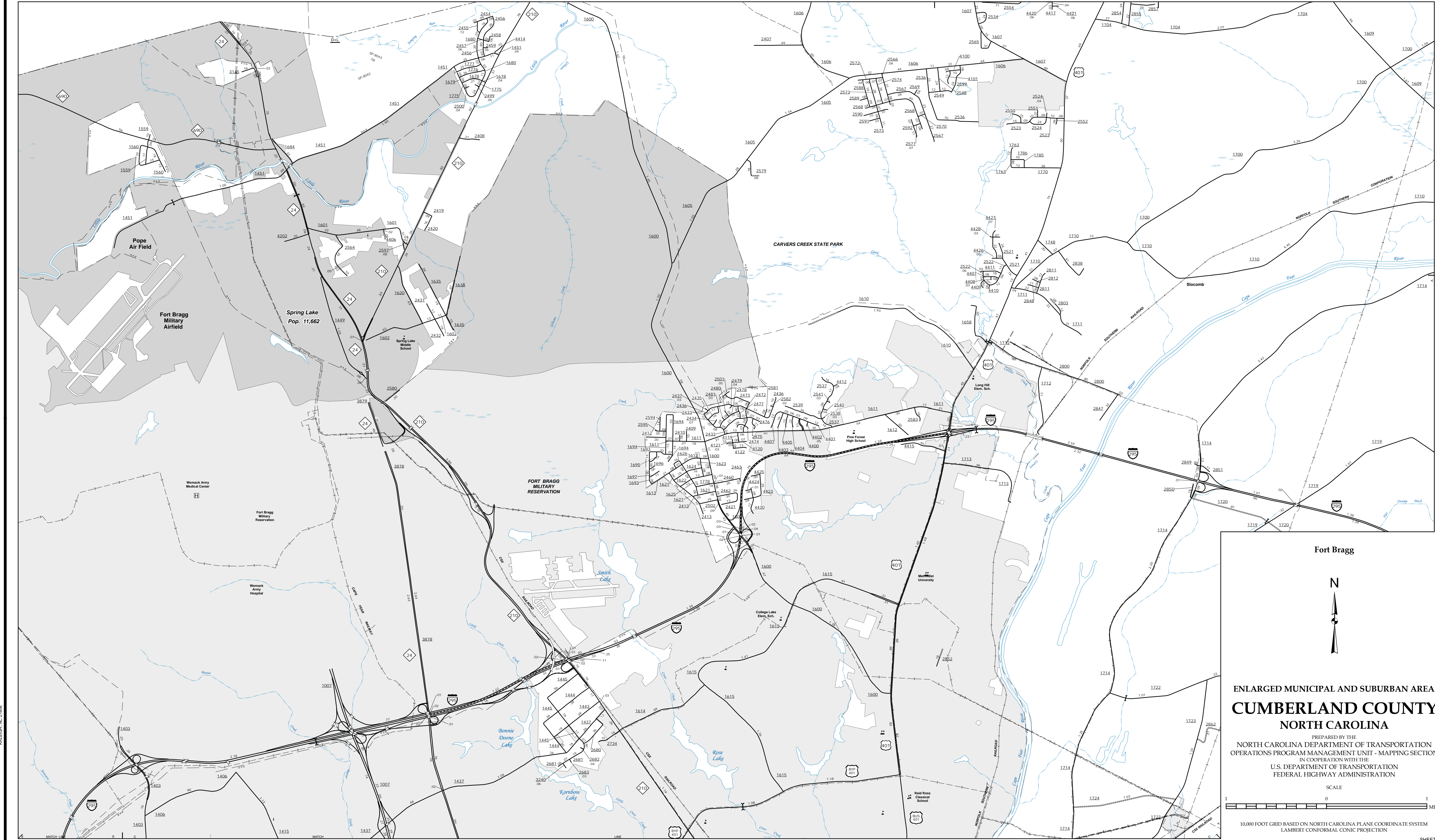


The Mapping Section's goal is to provide the most accurate and current information possible. Map data is compiled from numerous sources with varying dates of publication and map industry standards. As a result, the accuracy of the information shown on this map may vary. For more information, visit <http://www.ncdot.gov/Travel/Information> and click on Data Providers or contact us by phone at (811) 835-8480.

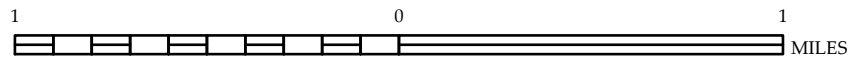
COPIES OF THIS MAP ARE AVAILABLE  
FOR PURCHASE AT A PUBLIC AT NOMINAL COST.  
ADDRESS: NORTH CAROLINA DEPARTMENT OF TRANSPORTATION  
NCDOT, MAPS SECTION  
4809 BERTHOUD  
COLUMBIANA, NC 28038



ENLARGED MUNICIPAL AND SUBURBAN AREAS  
**CUMBERLAND COUNTY**  
**NORTH CAROLINA**

PREPARED BY THE  
NORTH CAROLINA DEPARTMENT OF TRANSPORTATION  
OPERATIONS PROGRAM MANAGEMENT UNIT - MAPPING SECTION  
IN COOPERATION WITH THE  
U.S. DEPARTMENT OF TRANSPORTATION  
FEDERAL HIGHWAY ADMINISTRATION

SCALE



10,000 FOOT GRID BASED ON NORTH CAROLINA PLANE COORDINATE SYSTEM  
LAMBERT CONFORMAL CONIC PROJECTION