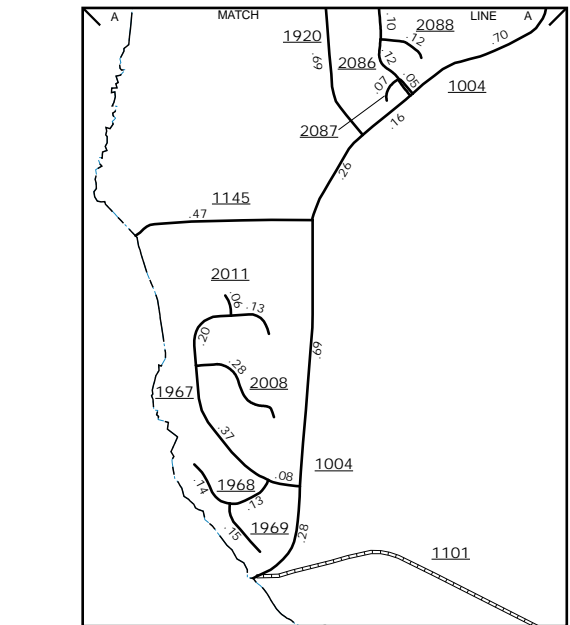
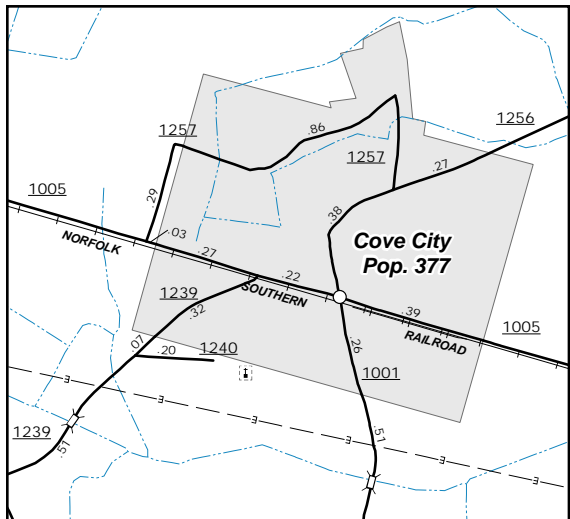
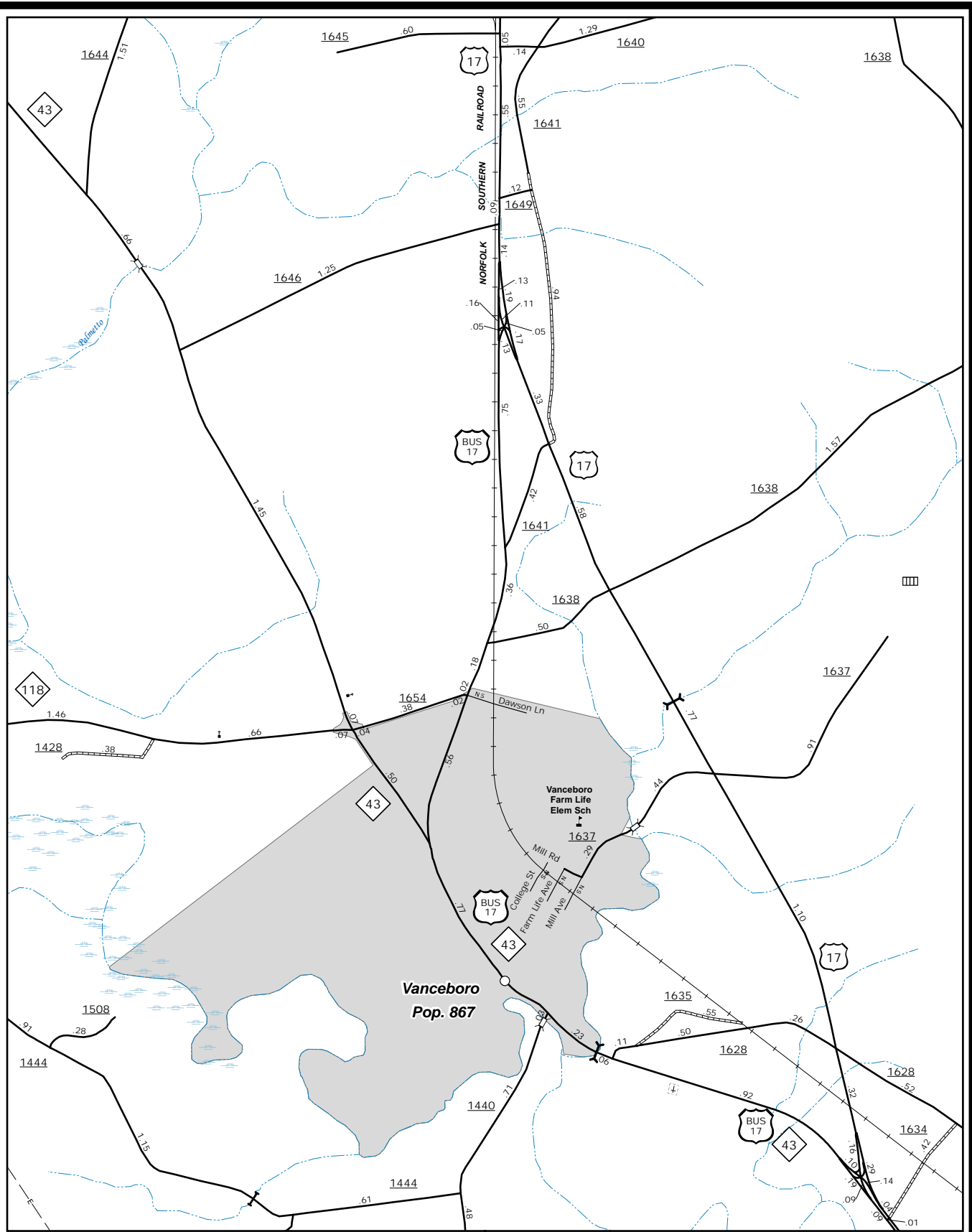
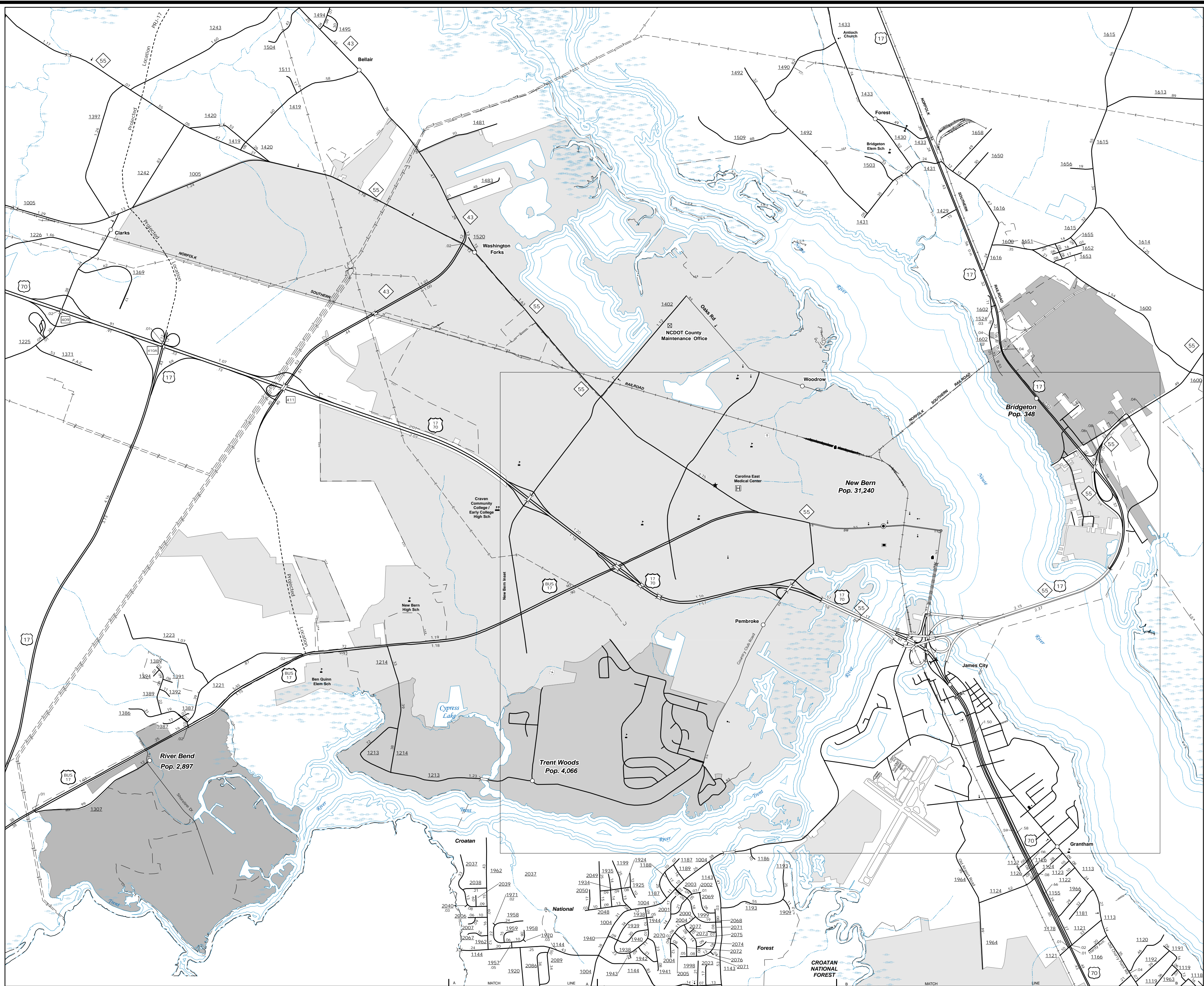


The Mapping Section's goal is to provide the most accurate and current information possible. Map data is compiled from numerous sources with varying degrees of accuracy. It may not reflect the most current information. As a result, the accuracy of the information shown on this map cannot be guaranteed. For additional information, visit <http://www.ncdot.gov/travel/infomapping/> and click on Data Providers or contact us by phone at (819) 835-8480.

COPIES OF THIS MAP ARE AVAILABLE
FOR PURCHASE AT A
REPUBLICAN NOMINAL COST.
N.C. DEPARTMENT OF TRANSPORTATION
ADDRESS-MAPPING SECTION
4809 BERRY LANE
Raleigh, NC 27609



Vanceboro

Cove City

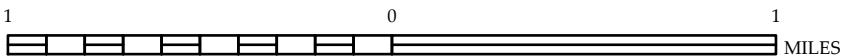


ENLARGED MUNICIPAL AND SUBURBAN AREAS

Craven County North Carolina

PREPARED BY THE
NORTH CAROLINA DEPARTMENT OF TRANSPORTATION
OPERATIONS PROGRAM MANAGEMENT UNIT - MAPPING SECTION
IN COOPERATION WITH THE
U.S. DEPARTMENT OF TRANSPORTATION
FEDERAL HIGHWAY ADMINISTRATION

SCALE



10,000 FOOT GRID BASED ON NORTH CAROLINA PLANE COORDINATE SYSTEM
LAMBERT CONFORMAL CONIC PROJECTION

SHEET 2 OF 4