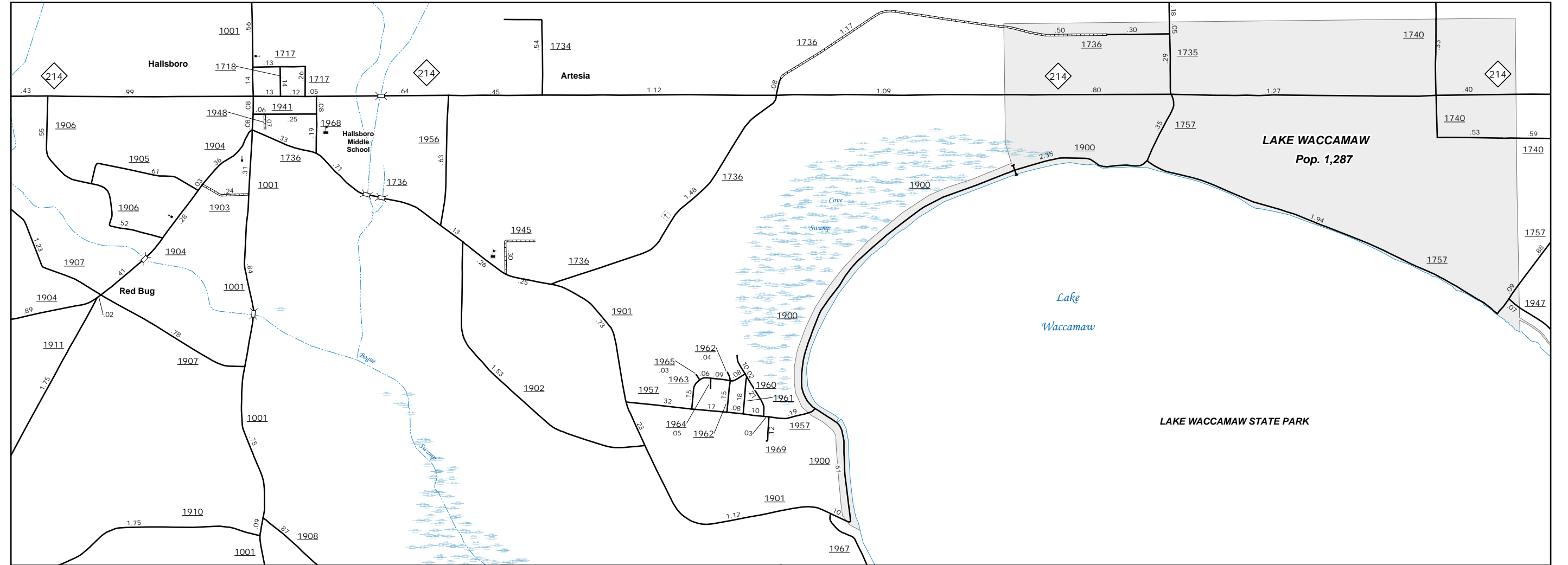
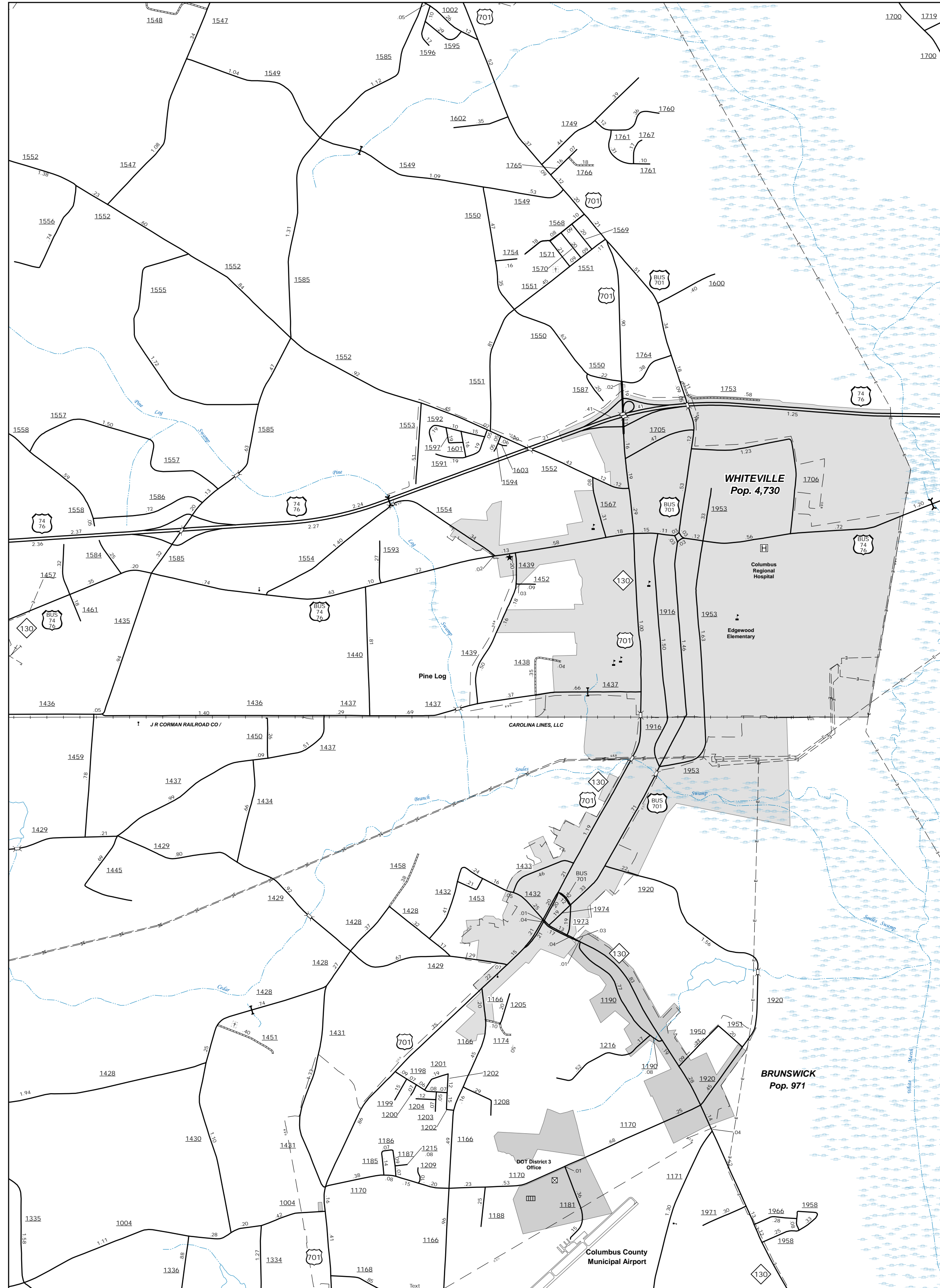
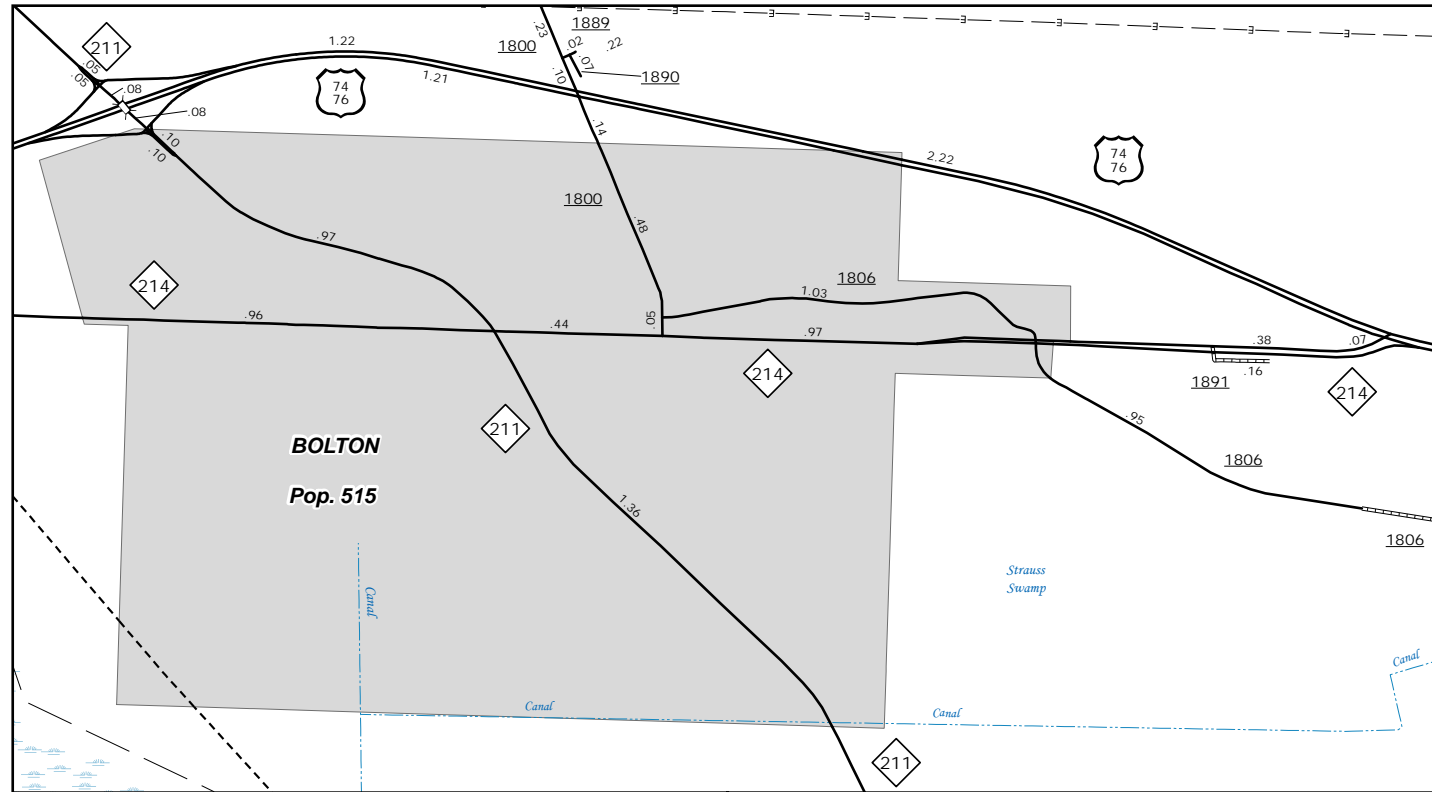


The Mapping Section's goal is to provide the most accurate and current information possible. Map data is compiled from numerous sources with varying dates of publication. The map includes information that is not necessarily current. As a result, the accuracy of the information is not guaranteed. For additional information, visit <http://www.ncdot.gov/transportation/mapping>, and click on Data Providers or contact us by phone at (819) 835-8480.

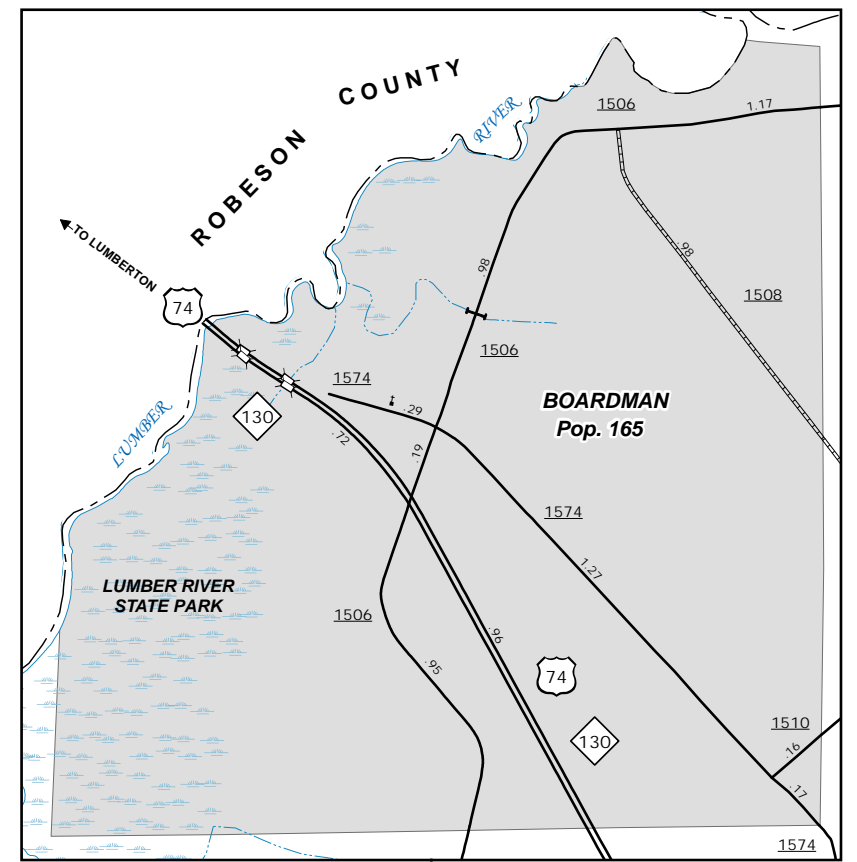
COPIES OF THIS MAP ARE AVAILABLE
FOR PURCHASE AT A
PUBLIC UTILITY COST.
ADDRESS:
N.C. DEPARTMENT OF TRANSPORTATION
MSAU - MAPPING SECTION
4809 BERNY RD.
COLUMBUS, NC 27805



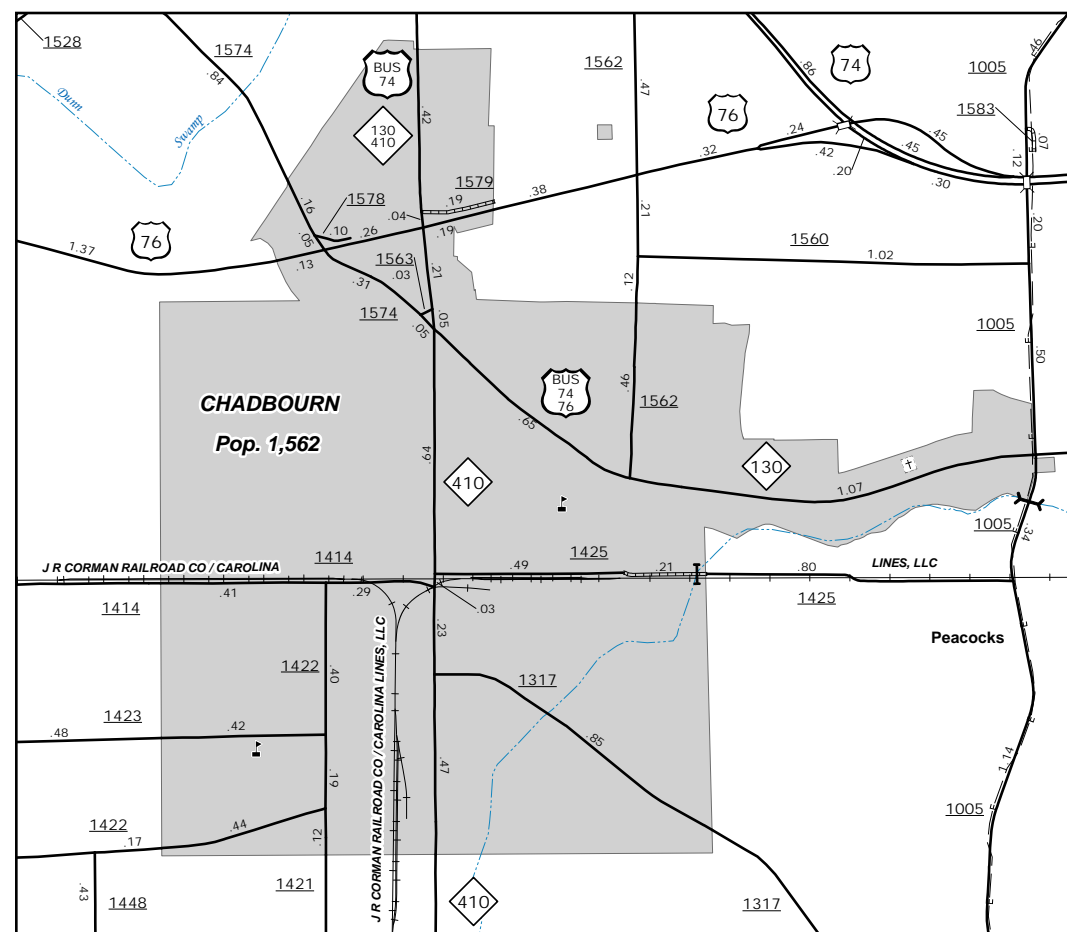
Lake Waccamaw



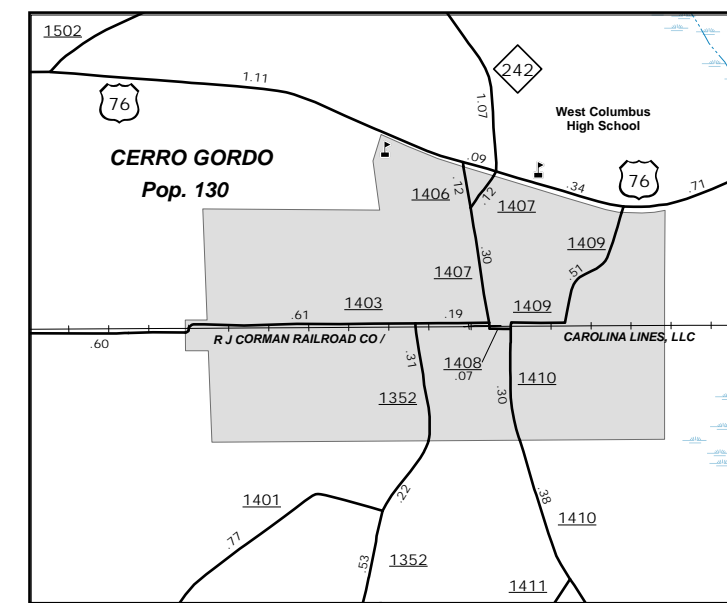
Bolton



Boardman



Chadbourne

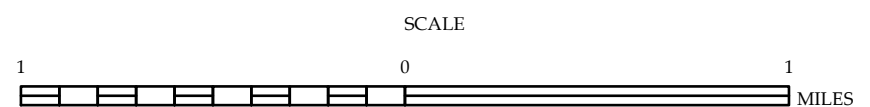


Cerro Gordo

ENLARGED MUNICIPAL AND SUBURBAN AREAS

COLUMBUS COUNTY NORTH CAROLINA

PREPARED BY THE
NORTH CAROLINA DEPARTMENT OF TRANSPORTATION
OPERATIONS PROGRAM MANAGEMENT UNIT - MAPPING SECTION
IN COOPERATION WITH THE
U.S. DEPARTMENT OF TRANSPORTATION
FEDERAL HIGHWAY ADMINISTRATION



10,000 FOOT GRID BASED ON NORTH CAROLINA PLANE COORDINATE SYSTEM
LAMBERT CONFORMAL CONIC PROJECTION