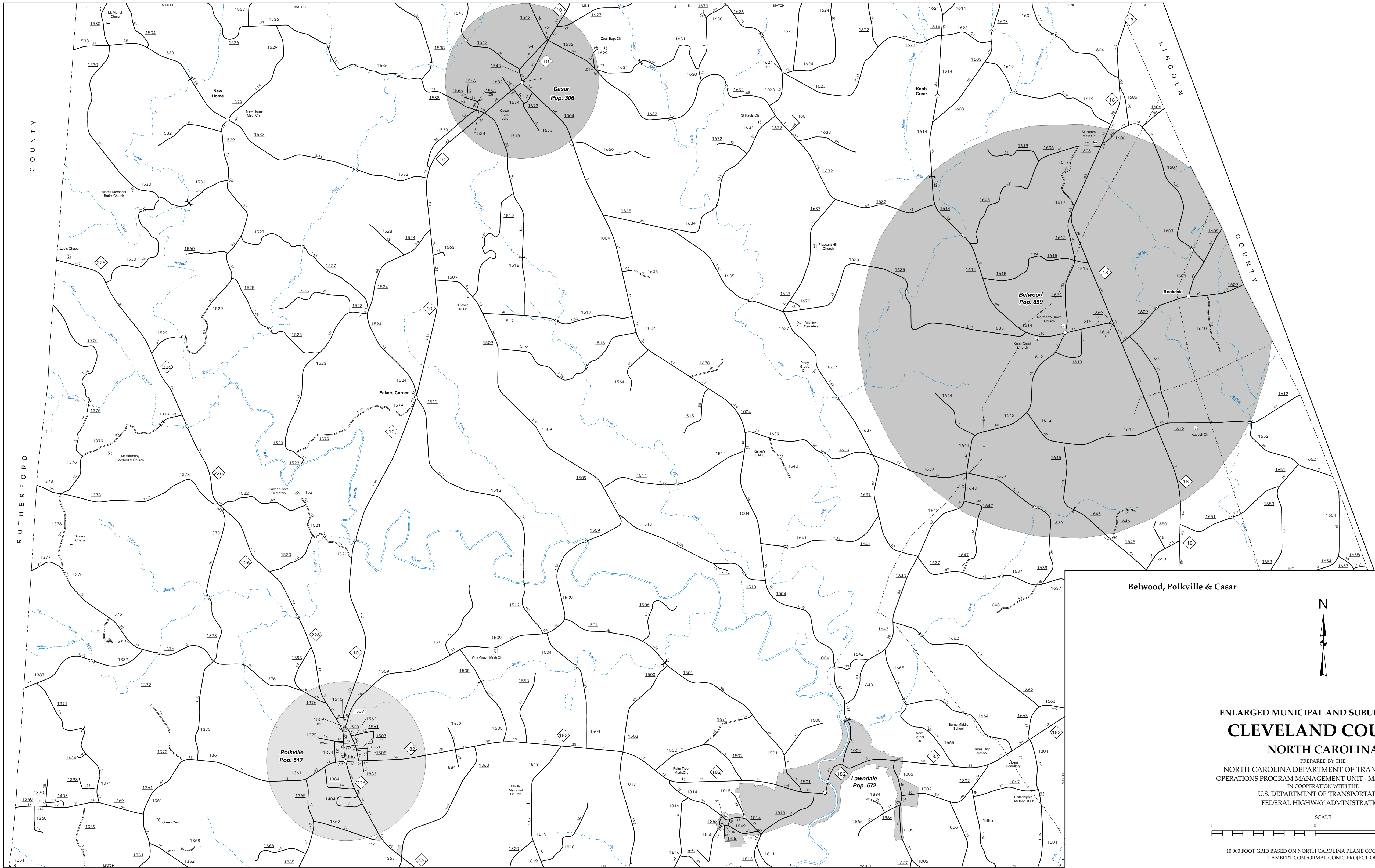


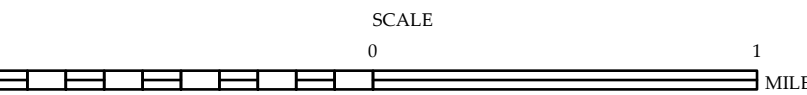
The Mapping Section's goal is to provide the most accurate and current information possible. Map data is compiled from numerous sources including data of publication and map accuracy standards as well as the accuracy of the data provided by the local government. This map includes information that is not the responsibility of the Mapping Section. The information shown on this map was last updated in April 2022. For additional information, visit <http://www.ncdot.gov/transportation> and click on Data Providers or contact us by phone at (919) 855-4480.

COPIES OF THIS MAP ARE AVAILABLE
FOR PURCHASE AT A PUBLIC UTILITY
ADDRESS
N.C. DEPARTMENT OF TRANSPORTATION
M&A - MAPPING SECTION
4801 BERT RD.
RALEIGH, NC 27609



ENLARGED MUNICIPAL AND SUBURBAN AREAS
CLEVELAND COUNTY
NORTH CAROLINA

PREPARED BY THE
NORTH CAROLINA DEPARTMENT OF TRANSPORTATION
OPERATIONS PROGRAM MANAGEMENT UNIT - MAPPING SECTION
IN COOPERATION WITH THE
U.S. DEPARTMENT OF TRANSPORTATION
FEDERAL HIGHWAY ADMINISTRATION



10,000 FOOT GRID BASED ON NORTH CAROLINA PLANE COORDINATE SYSTEM
LAMBERT CONFORMAL CONIC PROJECTION

SHEET 6 OF 6